



**JET RED BACKPACK VACUUM  
OWNER'S MANUAL**

**Model: JR8BPV**

**120V 12A, 1400W ETL US Canada**

**Atrix**

**1350 Larc Industrial Blvd.**

**Burnsville, MN 55337**

**[www.atrix.com](http://www.atrix.com)**

**[sales@atrix.com](mailto:sales@atrix.com)**

**Telephone: 952.894.6154**

**Toll Free Telephone: 800.222.6154**

**Fax: 952.894.6256**

## **IMPORTANT SAFETY INSTRUCTIONS**

When using an electrical appliance, basic precautions should always be followed, including the following:

### **READ ALL INSTRUCTIONS BEFORE USING APPLIANCE**

#### **WARNING: TO REDUCE THE RISK OF FIRE, ELECTRICAL SHOCK OR INJURY:**

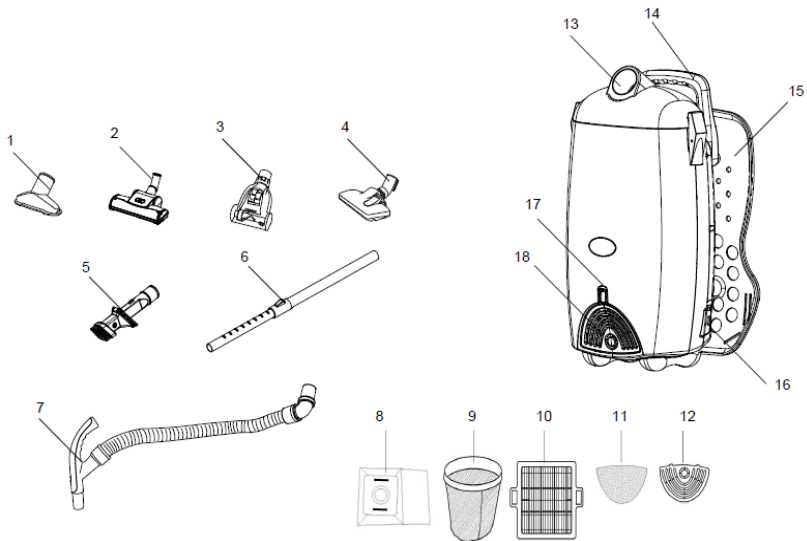
1. Do not leave appliance when plugged in. Unplug from outlet when not in use and before servicing.
2. Electrical shock may occur if used outdoors or on wet surfaces.
3. Do not allow to be used as a toy. Close attention is necessary when used by or near children.
4. Use only as described in this manual. Use only manufacturer's recommended instructions.
5. Do not use with damaged cord or plug. If appliance is not working as it should, has been dropped, damaged, left outdoors, or dropped into water, return to Atrix International.
6. Do not pull or carry by cord, use cord as a handle, close a door on cord, or pull cord around sharp edges of corners. Do not run appliance over cord. Keep cord away from heated surfaces.
7. Do not unplug by pulling on cord. To unplug, grasp plug, not the cord.
8. Do not handle plug or appliance with wet hands.
9. Do not put any object into any openings. Do not use with any opening blocked; keep free of dust, lint, hair, and anything that may reduce airflow.
10. Keep hair, loose clothing, fingers, and all body parts away from openings and moving parts.

11. Do not pick up anything that is burning or smoking such as cigarettes, matches or hot ashes.
12. Do not use without filter in place.
13. Turn off all controls before unplugging.
14. Use extra care when cleaning on stairs.
15. Do not use to pick up any liquids, including flammable or combustible liquids such as gasoline or use in areas where they may be present.
16. Connect to a properly grounded outlet only.
17. This appliance is not intended for use by persons (including children) with reduced physical, sensory, and mental capabilities, or lack of experience and knowledge, unless they have been given supervision or instruction concerning use of appliance by person responsible for their safety.
18. Children should be supervised to ensure that they do not play with the appliance.

**SAVE THESE INSTRUCTIONS!**



## **GET TO KNOW YOUR ERGO BACKPACK VACUUM**



1. Furniture Nozzle (*BP40*)
2. Air Driven Turbo Brush (*BP44*)
3. Mini Turbo Brush (*JRMTB*)
4. Floor Tool (*BP43-1*)
5. 3-in-1 Multi-Surface Tool (*JR31*)
6. Extension Wand, 22"-37" (*BP39*)
7. Hose (*JRBPH*)
8. Filter Bags (*VACBPF8*)
9. Shakeout Bag (*VACBP8*)
10. & 11. Premotor and Exhaust Filter Set (*BPFILPACK*)
12. Exhaust Filter Cover (*BP18*)
13. Jet Red Lid (*JRAILID*) Hose Inlet
14. Carry Handle
15. Harness Back Support
16. Cord Strain Relief (*BP99*)
17. Latch to access Exhaust Filter
18. Exhaust Filter Cover (*BP18*)

## OPERATING INSTRUCTIONS

**Warning:** To reduce the risk of electric shock, the power cord must be disconnected before removing the dust bag, shake-out bag, changing the filters or performing maintenance or trouble-shooting checks.

**Important:** Do NOT use the vacuum without all filters, shake-out bag, and HEPA dust bag in place.

### **Attaching the Flexible Hose to the Vacuum**

The flexible hose should be connected to the vacuum before strapping the unit to your back.

1. Push/press fit the hose into the lid opening.



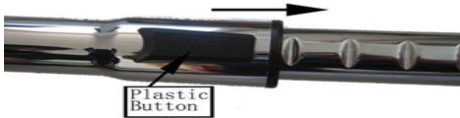
### **Attaching the Telescopic Extension Wand**

**Note:** Always remove the power plug from the wall outlet before attaching or removing accessories.

1. Holding the telescopic extension wand, insert the handle into the telescopic tube receptacle. Push the handle in while using a twisting motion to secure the pieces together.



2. To extend the length, push forward on the plastic button and pull the inner tube outward to extend for a longer reach.



### **Manual Suction Control**

Your vacuum cleaner includes a manual variable suction control on the flexible hose handle. The suction power can be adjusted by moving the suction regulator to the desired position between open and closed.

Open gives you less suction, closed maximum suction. For example, less suction is required on upholstery and draperies compared to floors, which require maximum suction.



### **Using the Attachments**

#### **3-in-1 Multi-Surface Tool Brush**

The dusting brush is used for furniture.

The crevice tool is for radiators, crevices, corners, baseboards and between cushions.

The furniture utensil is used for furniture and rugs.

#### **Using the Floor to Carpet Brush**

1. To attach the floor to carpet brush to the telescopic extension wand, insert the telescopic tube into the carpet to floor brush.



2. Step on the floor to carpet selector to adjust the height of the brushes. There are two different heights. The tool allows you to retract the bristle brushes when being used on the carpet or rugs, and extend when being used on wood or tile surfaces.



3. To remove the telescopic tube from the floor to carpet brush, pull the telescopic tube out from the floor to carpet brush.

### **Air Driven Turbo Brush**

The efficiency of your air driven turbo brush depends on the bristle brush rotating at high speed. Strong air suction is needed to accomplish this.

To ensure that maximum air suction is maintained, please read the following instructions:

1. Change the HEPA dust bag or empty the shake-out bag frequently.
2. Replace the pre-motor and exhaust filters as needed.
3. Ensure that the rotating brush is kept free of hair and string, which may accumulate and decrease brush performance.

4. To attach the air driven turbo brush, insert the telescopic tube into the air driven turbo brush.
5. To adjust the suction control on the air driven turbo brush, slide the suction control for more or less as desired.

### **Using Your Vacuum**

1. Insert the power plug into the extension cord, then plug the extension cord into the wall outlet.
2. Make a loop with the extension cord and put the loop through the extension cord relief. Put the extension cord around the hook and pull the cord tight. (See page 11)
3. Connect the hose and telescopic extension wand if desired.
4. Correctly place shoulder straps on each shoulder and secure the waist trap.
5. Turn the unit on by pressing the switch located near the base of the unit to turn the vacuum cleaner on.

**Warning:** To reduce the risk of electric shock, the power cord must be disconnected before removing the dust bag, shake-out bag, changing the filters or performing maintenance or trouble-shooting checks.

### **Removing & Replacing HEPA Dust Bag**

**Important Note:** DO NOT use the vacuum without all filters, shake-out bag, and with or without HEPA dust bag in place.

1. To open the canister lid, pull up the canister lid tabs on each side of the unit and remove the canister lid. (Fig.1)

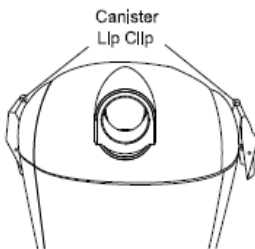


Fig. 1

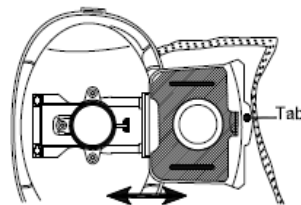


Fig. 2



2. Pull the tab on the HEPA bag holder out slightly and flip upwards. (Fig. 2)
3. Holding the HEPA bag in your hand, slide/pull it out of the bag holder and dispose.
4. Insert/slide new bag. Cardboard face should rest securely in the bag cover guides. (Fig. 3)

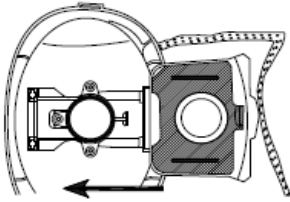


Fig. 3

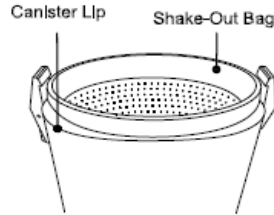


Fig. 4

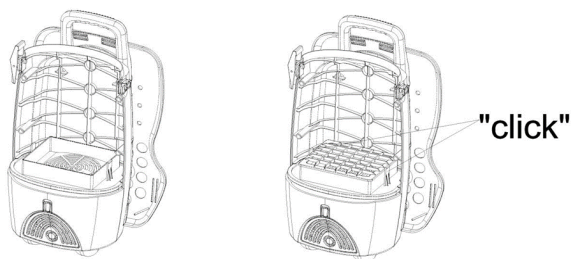
### **Cleaning & Replacing the Shake-Out Bag**

1. Remove the Shake-out bag from the canister. Hold the handle on the bottom of the bag, shaking vigorously over a garbage receptacle and preferably outdoors. (Fig. 4)
2. As necessary, hand wash the cloth shake-out bag with warm water and let it air dry before reinserting it onto canister lip. Allow to air dry for **24 hours. Never replace it in the vacuum if still wet.**
3. Inspect shake-out bag regularly for tears or damage. Replace shake-out bag if damaged or torn.

### **Cleaning or Replacing the HEPA Pre-Motor Filter**

Important Please Note: The HEPA pre-motor filter will stop most of the tiniest dust particles and airborne allergens from re-entering the air you breathe. Because of this incredible filtration performance, the HEPA pre-motor filter will accumulate many fine dust particles that are difficult to see. Be assured that the HEPA pre-motor filter is doing the job. Clean the HEPA pre-motor filter when dirty as described in this section.

1. Remove the shake-out bag from the canister. The HEPA pre-motor filter is located underneath the shake-out bag. To remove the HEPA pre-motor filter, place your index finger underneath the edge of the pre-motor filter, and using your thumb press the tab toward the center of the filter to release, then lift the side of the HEPA pre-motor filter and pull upwards on filter.
2. Vigorously tap clean the HEPA pre-motor filter on a hard surface to remove any residual dust that might still be on the HEPA pre-motor filter.
3. You can wash the HEPA pre-motor filter by running it under the tap and allowing the water to run on the dirty side at least once a month or when suction appears to be decreased.
4. Shake off any excess water and allow to dry completely before reinserting it.
5. Replace the Pre-Motor Filter if it cannot be cleaned or if damaged.
6. To reinsert, place filter over the tabs and press down. You should hear two "clicks" if installed correctly. (Fig. 5)



(Fig. 5)

Wash or Replace at least once a year or when suction appears reduced.

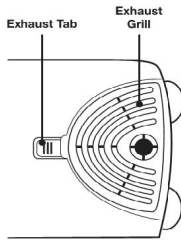
**WARNING**

Allow 24 hours for drying before replacing in unit.

**Cleaning the Exhaust Filter**

1. Pull up and hold the exhaust tab and pull out the exhaust cover. (Fig. 6)

2. Remove the exhaust filter.
3. As necessary, hand wash or replace the cloth filter with tap water and let dry before reinserting it.



(Fig. 6)

### **How to properly use the cord relief:**

Step 1: Plug vacuum cord into extension cord.



Step 2: Make a loop with the extension cord.



Step 3: Put loop through extension cord relief.



Step 4: Put the extension cord around the hook and pull the cord tight.



**Atrix JET RED Backpack Vacuum  
WARRANTY INFORMATION**

**Warranty/Service Information:** For warranty service information, please contact Atrix or your local Atrix distributor.

Atrix Jet Red Backpack Vacuum Limited Warranty: To the original user purchasing the Atrix Jet Red Backpack Vacuum, Atrix warrants that the vacuum will be free of defects in material and manufacture for a period of one (1) year from the date of purchase. Should any failure to conform to this warranty appear within this period, Atrix will, at its option, repair or replace the defective product. It is the user's responsibility to return the product, freight prepaid, to Atrix International. These remedies are the user's exclusive remedies for breach of this warranty.

**Exclusions to warranty coverage:** The above warranty will not apply to any special configurations or to any unit that have been modified, or damaged by negligence, misuse, accident or failure to follow Atrix's Instruction manual. Consumable supplies, such as filters, accessories, and motor brushes are not covered by this warranty.

**Disclaimer of Warranty:** EXCEPT FOR THE IMPLIED WARRANTIES OF TITLE AND AGAINST PATENT INFRINGEMENT, ATRIX MAKES NO OTHER WARRANTIES WITH RESPECT TO THE ATRIX BACKPACK VACUUM CLEANER, EXPRESS OR IMPLIED, INCLUDING BUT NOT LIMITED TO ANY IMPLIED WARRANTY OF MERCHANTABILITY OR FITNESS FOR A PARTICULAR PURPOSE.

**Limitation of Liability:** ATRIX WILL NOT BE LIABLE UNDER ANY CIRCUMSTANCES FOR ANY COINCIDENTAL, SPECIAL, OR CONSEQUENTIAL DAMAGES OR ECONOMICAL LOSS, BASED UPON BREACH OF WARRANTY, BREACH OF CONTRACT, NEGLIGENCE, STRICT LIABILITY IN TORT OR ANY OTHER LEGAL THEORY, EVEN IF ATRIX HAS BEEN ADVISED OF THE POSSIBILITY OF SUCH DAMAGES INCLUDING, BUT NOT LIMITED TO LOSS OF PROFITS, REVENUE, EQUIPMENT USE, DATA OR INFORMATION OF ANY KIND. THE LIABILITY OF ATRIX SHALL NOT UNDER ANY CIRCUMSTANCE, EXCEPT AS EXPRESSLY PROVIDED HEREIN, EXCEED THE PRICE OF THE ATRIX BACKPACK VACUUM.

**To Register your Warranty Visit:**

**[www.atrix.com](http://www.atrix.com)**