



LT955-AH AIRSTRIKE BI-DIRECTIONAL AIR HAMMER

THIS INSTRUCTION MANUAL CONTAINS IMPORTANT SAFETY INFORMATION
READ CAREFULLY AND UNDERSTAND ALL INFORMATION BEFORE OPERATING THIS TOOL
SAVE THIS MANUAL FOR FUTURE REFERENCE

AIR SUPPLY

Tools of this class operate on a wide range of air pressures. We recommend that air pressure measures 90 PSI at air inlet while in use. Low pressure (less than 90 PSI, 6.4 bar) reduces the speed and performance of all air tools. High pressure (over 115 psi, 8.0 bar) exceeds the rated capacity of the tool, which will shorten tool life through faster wear and could cause injury.

Always use clean, dry air. Dust, corrosive fumes, and/or water in the air line will cause damage to the tool. Drain the air tank daily. Clean air inlet filter screen at least once per week.

The air inlet used for connecting air supply, has standard 1/4" NPT American Thread. Line pressure should be increased to compensate for unusually long air hoses (over 25 feet). Minimum hose diameter should be 3/8" I.D. Fittings should have the same inside dimensions and should be tightly secured.

LUBRICATION

Lubricate the air motor daily with air tool oil. If no air line oiler is used, run 1/2 oz. of oil through the tool. The oil can be squirted into the tool air inlet or into the hose at the nearest connection to the air supply, then run tool. The oil plug is only for adding multi-purpose grease after repair or maintenance of the impact mechanism. Overfilling will cause a reduction in the power of the air hammer.

OPERATION

FIRST: Attach the Quick Release Chuck to the front of the air hammer.

NOTE: Make sure the Quick Release Chuck is fully threaded onto the air hammer before use.

TO OPERATE AS A CHISEL: Always place a chisel in the hammer and hold the tool down to the work before operating. Damage to the tool or the Quick Release Chuck may result if this precaution is not followed. The Quick Release Chuck is not designed for complete safety against accidental release of cutters or chisels.

TO AVOID INJURY: The throttle must never be depressed unless the chisel is held firmly against the work place. When tool is not in actual use, the chisel must be removed. During operation, safety goggles should be used.

TO CHANGE CHISEL: Pull back Quick Release Chuck and insert a chisel. Release Quick Release Chuck.

TO REGULATE AIR PRESSURE: Turn Valve on the adjustable Brass Air Flow Regulator

TO OPERATE AS A PULLER: Insert the Air Lock Plug into the front of air hammer Quick Release Chuck. Attach your choice of any AirStrike Air Tool puller bit to rear of air hammer using 1/2-20 Threaded Hole Insert.

NOTE: Make sure bit is securely connected to back of air hammer using 1/2" locking washer and hex nut. Turn air hammer around in your hand. Push against the trigger with your thumb to engage pulling feature of air hammer.

WARNING: When operating air hammer wear safety goggles and work gloves.

TROUBLESHOOTING

TOOL WILL NOT RUN: This condition is probably caused by a clogged cycling valve or throttle valve.

YOU SHOULD: Check the air inlet for blockage. Pour a generous amount of air oil into air inlet. Operate the trigger in short bursts with a bit/chisel in place and against a solid surface. Detach the air supply. Tap the nose or barrel lightly with a plastic mallet, reconnect the air supply and repeat above steps. If the tool is still seized, insert a 6" piece of 1/8" diameter rod in the nozzle and lightly tap to loosen the piston in the rear direction. Reconnect air supply and repeat above steps.

CHISEL STUCK IN NOZZLE: This condition is probably caused by a deformed shank.

YOU SHOULD: Have the tool serviced by Milton Industries.

NOTE: Disassembly of this tool by anyone other than Milton Industries will void the warranty on this tool.

WARNING: Cancer and Reproductive Harm-
WWW.P65Warning.ca.gov



Always wear impact-resistant eye and face protection while operating or doing maintenance on this tool

For Safety, top performance and maximum durability of parts, operate this tool at 90 PSI, 6.2 BAR max air pressure with 3/8" diameter air supply hose



High sound levels can cause permanent hearing loss. Use hearing protection as recommended by your employer and OSHA regulations while tool is in use.

Wear working gloves when using this tool. Gloves will reduce risk of cuts or burns.



Air powered tools can vibrate during use. Extended exposure to vibration during use may be harmful to your hands and arms. Discontinue use of tool if this pain or discomfort occurs and seek medical advice before resuming use.



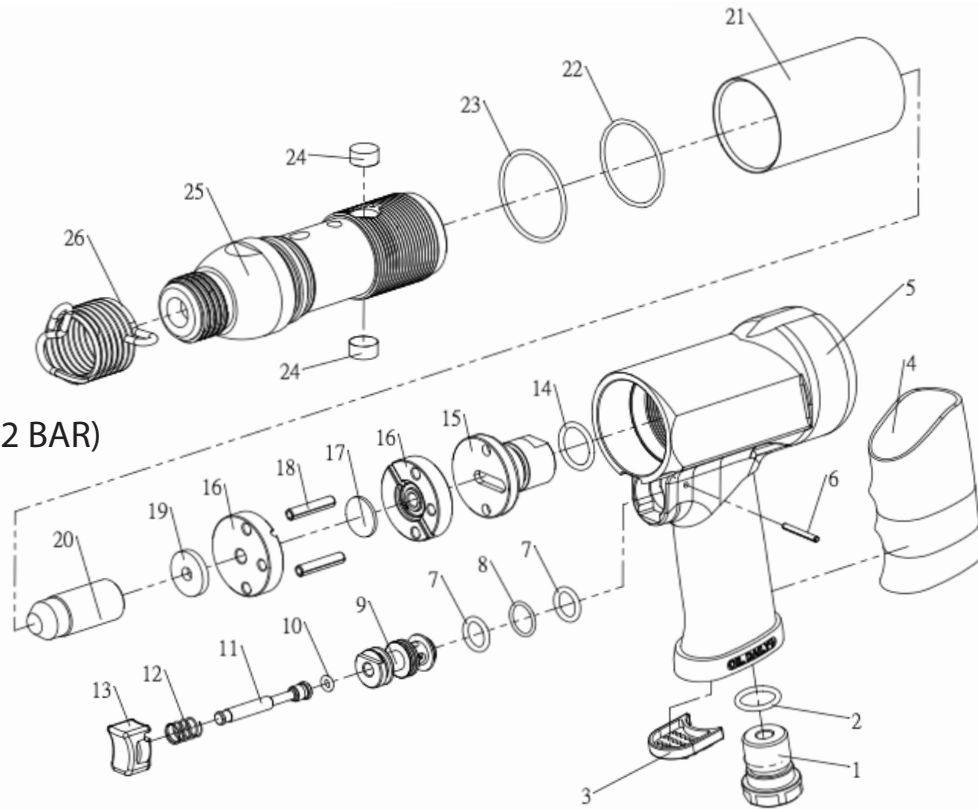
LT955-AH AIRSTRIKE BI-DIRECTIONAL AIR HAMMER

SPECIFICATIONS

Blows Per Minute: 3,000 BPM
 Bore Diameter: 3/4"
 Piston Stroke: 3 3/4"
 Air Inlet: 1/4" NPT
 Minimum Hose Size: 3/8" I.D.
 Weight: 5.75 LBS.
 Length: 10.75"
 Sound Power Level: 110 dBA
 Recommended Air Pressure: 90 PSI (6.2 BAR)

WARNING

Some dust created by power sanding, sawing, grinding, drilling and other construction activities contains chemicals known to cause cancer, birth defects or other reproductive harm. Some examples of these chemicals are: lead from lead-based paints, crystalline silica from bricks, cement and other masonry products, and arsenic and chromium from chemically-treated lumber. The risk of exposure to these types of chemicals varies depending on how frequently you work with certain chemicals. To reduce your exposure of these chemicals, work in well-ventilated areas and work with approved safety equipment, such as dust masks that are specially designed to filter out microscopic particles.



Index NO	Parts No	Description	Q'ty Tool	Index NO	Parts No	Description	Q'ty Tool
1	361001	Inlet Bushing	1	14	P-18	O-Ring	1
2	P-16	O-Ring	1	15	362B-015	Connect Shaft	1
3	361003	Exhaust Deffuser	1	16	361015	Valve Body	2
4	361004A#R	Handle Cover	1	17	361016	Valve Washer	1
5	362B-005A	Housing	1	18	SPP-50250	Spring Pin (Ø5x25)	2
6	SPP-25250	Spring Pin	1	19	361018	Cylinder Washer	1
7	P-12	O-Ring	2	20	361A19	Piston	1
8	P-S014	O-Ring	1	21	362020	Cylinder Sleeve	1
9	361010	Valve Bushing	1	22	P-S038	O-Ring (S040)	1
10	P-4	O-Ring	1	23	P-S040	O-Ring (S040)	1
11	361012	Valve Shaft	1	24	361023	Cylinder Lock Plug	2
12	361013	Valve Spring	1	25	361A24	Cylinder	1
13	361014	Trigger	1	26	361027	Quick Change Retainer	1

WARRANTY INFORMATION

NOTE: DO NOT RETURN AIR HAMMER TO PLACE OF PURCHASE

OUR WARRANTY POLICY: This AirStrike Air Hammer is warranted against defects in material and workmanship for a period of ONE (1) Year for the original date of purchase. We will repair or replace, at our option, any part which proves to be defective in material or workmanship. Repairs or replacements are warranted as described above for the duration of the original warranty period. This warranty does not apply products which have been subjected to abuse, misuse, modification, neglect, lack of maintenance, use in production-related service, or repaired by anyone other than Milton Industries.