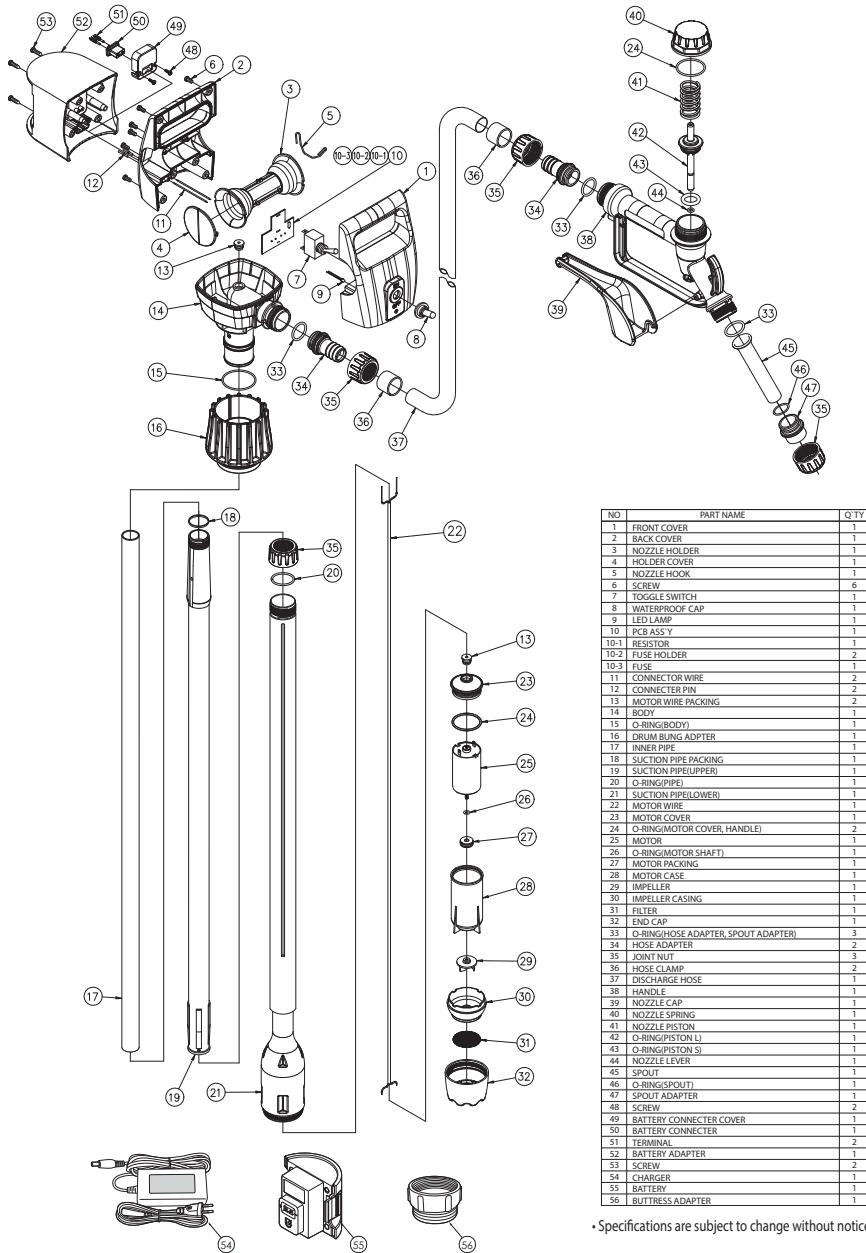


ASSEMBLY DIAGRAM



NO	PART NAME	QTY
1	FRONT COVER	1
2	BACK COVER	1
3	NOZZLE HOLDER	1
4	HOLDER COVER	1
5	NOZZLE HOOK	1
6	SCREW	6
7	TOGGLE SWITCH	1
8	WATERPROOF CAP	1
9	LED LAMP	1
10	PCB ASS'Y	1
10-1	RESISTOR	1
10-2	FUSE HOLDER	2
10-3	FUSE	1
11	CONNECTOR WIRE	2
12	CONNECTER PIN	2
13	MOTOR WIRE PACKING	2
14	BODY	1
15	O-RING(BODY)	1
16	DRUM BLING ADPTER	1
17	INNER PIPE	1
18	SUCTION PIPE PACKING	1
19	SUCTION PIPE(UPPER)	1
20	O-RING(PIPE)	1
21	SUCTION PIPE(LOWER)	1
22	MOTOR WIRE	1
23	MOTOR COVER	1
24	O-RING(MOTOR COVER, HANDLE)	2
25	MOTOR	1
26	O-RING(MOTOR SHAFT)	1
27	MOTOR PACKING	1
28	MOTOR CASE	1
29	IMPELLER	1
30	IMPELLER CASING	1
31	FILTER	1
32	END CAP	1
33	O-RING(HOSE ADAPTER, SPOUT ADAPTER)	3
34	HOSE ADAPTER	2
35	JOINT NUT	3
36	HOSE CLAMP	2
37	DISCHARGE HOSE	1
38	HANDLE	1
39	NOZZLE CAP	1
40	NOZZLE SPRING	1
41	NOZZLE PISTON	1
42	O-RING(PISTON LI)	1
43	O-RING(PISTON SJ)	1
44	NOZZLE LEVER	1
45	SPOUT	1
46	O-RING(SPOUT)	1
47	SPOUT ADAPTER	1
48	SCREW	2
49	BATTERY CONNECTER COVER	1
50	BATTERY CONNECTER	1
51	TERMINAL	2
52	BATTERY ADAPTER	1
53	SCREW	2
54	CHARGER	1
55	BATTERY	1
56	BUTTRESS ADAPTER	1

• Specifications are subject to change without notice.

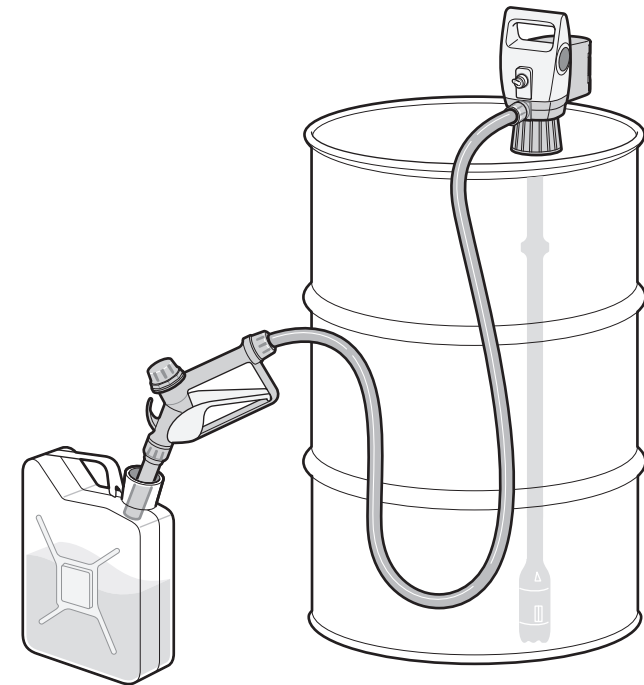
BATTERY OPERATED PUMP

INSTRUCTIONS AND PRECAUTIONS

※ Read all instructions and precautions before use.

MODEL: ZE7019L

U.S. Design patent US D723,587 S
Design patent EU 002530402-0001



ZEE LINE
by **MILTON**®

Precautions for Use

These instructions are to ensure the product is used correctly, safely, and to prevent any possible risk or damage to the user and/or others people. Our company shall not take any responsibility for any failure of product, malfunction and damages caused by improper use by the user or third parties.

⚠ DANGER

If the directions of this sign are not followed, fatal accidents can happen and the user may die or get seriously injured.

⚠ WARNING

If the directions of this sign are not followed, accidents can happen or the user can get injured.

⚠ CAUTION

If the directions of this sign are not followed, the product can get damaged or the user can get injured.

⚠ DANGER

Do not use this pump for transferring the following liquids; Aceton, Benzen, Cresol, Ethyl, Phenol, Methyl ethyl, Concentrated caustic soda liquid, Nitric acid, Hydrochloric acid, Sulfuric- acid, thinner or solvents, Etc.

Do not use for concentrated acids.

Only use on applicable liquids written on the specifications.

Make sure to use the pump on even surface.

Do not use when the cable and plug is damaged or if plug is loose on outlet.

Keep the Li-ion battery out of direct sunlight, water vapor, soft coal, dust, and damp air etc.

Only use the charger provided with the battery. Do not charge the battery with other charger.

Do not touch the charger with wet hands.

* If pump will not be used for more than 6 months, remove 14.8V Li-ion battery from pump and fully charge it before storing. Repeat every 6 months for long-term storage.

⚠ WARNING

Make sure the pump is tightly secured to the drum(tank) before turning the pump on.

Do not refuel directly while the vehicle or equipment is turned on.

Do not leave the pump unattended.

Do not allow children to operate the product without adult supervision.

Wash and clean out the outlet, plug, and plug blades regularly.

If the charger falls into the water, pull the plug out and do not reuse it.

Make sure to hold on the plug and pull it out from the outlet. (Do not pull off the cable)

Do not get power cord damaged, bent, pulled, twisted, or bound.

Do not get the plug and outlet wet in any case.

When disposing of pump, make sure to have it completely destroyed so that others won't use it again.

When you hand it over to another person, be sure to give them the instructions too.

⚠ CAUTION

Do not use deteriorated or contaminated liquids and fuels.

Do not use this pump for hot liquids above 40°C (104°F).

Use it in a well-ventilated area.

Do not run the pump 'dry' or let the pump idle without transferring.

Do not run the pump for longer than 15 minutes.

Make sure to turn off the power after using the pump.

Make sure to remove any left-over liquid in the discharge hose after each use.

After using the pump, do not keep it on its side or upside down.

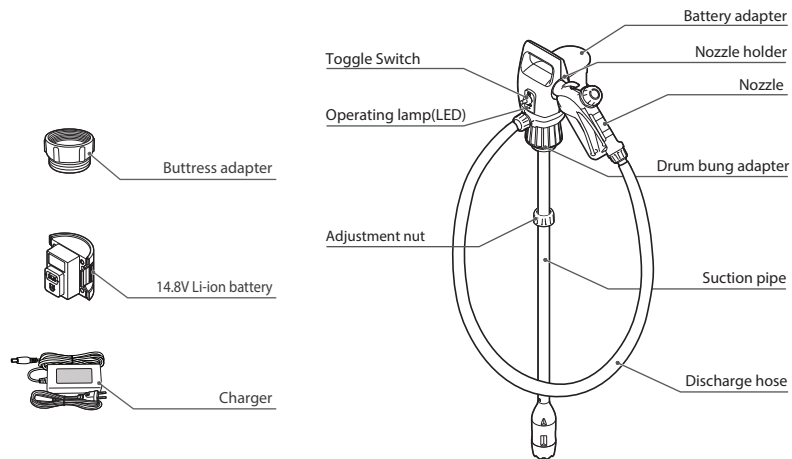
Do not alter or disassemble the pump.

Do not shock the pump and charger. Also do not make the power cord tense.

When cleaning up the pump, do not use thinner, benzene, organic solvent, or glass cleaners.

The included 14.8V Li-ion battery charged with about 30% from the factory and need to charge before use.

Names of Parts



Specifications (MODEL: ZE7019L)

Delivery volume	Approx. 22LPM (6 GPM) with Water	Operating temperature	+5°C ~ 40°C (41°F ~ 104°F)
Suction pipe length	Approx. 850 ~ 1245mm (33.5" ~ 49")	Operating voltage	DC14.8V
Discharge hose length	Approx. 2m (6.6ft)	Fuse	8A
Applicable liquids	Diesel, DEF(AdBlue), Non-potable water, Kerosene, Antifreeze, Windshield washer fluid, Agricultural Chemicals	Duty Cycle (how long can the pump be used continuously)	Maximum 15 minutes on, minimum 30 minutes off

Directions for Use

