

3. No Unlawful or Prohibited Use

This product is designed for use with pets only. This product is not intended to harm, injure or provoke. Using this product in a way that is not intended could result in violation of Federal, State or local laws.

4. Limitation of Liability

In no event shall Radio Systems Corporation or any of its associated companies be liable for (i) any direct, indirect, punitive, incidental, special or consequential damage and/or (ii) any loss or damages whatsoever arising out of or connected with the use or misuse of this product. The Purchaser assumes all risks and liability from the use of this product to the fullest extent permissible by law.

5. Modification of Terms and Conditions

Radio Systems Corporation reserves the right to change the terms, conditions and notices governing this product from time to time. If such changes have been notified to you prior to your use of this product, they shall be binding on you as if incorporated herein.

FCC

This device complies with part 15 of the FCC Rules. Operation is subject to the following two conditions: (1) This device may not cause harmful interference, and (2) this device must accept any interference received, including interference that may cause undesired operation.

NOTE: This equipment has been tested and found to comply with the limits for a Class B digital device, pursuant to part 15 of the FCC Rules. These limits are designed to provide reasonable protection against harmful interference in a residential installation. This equipment generates, uses, and can radiate radio frequency energy and, if not installed and used in accordance with the instructions, may cause harmful interference to radio communications. However, there is no guarantee that interference will not occur in a specific installation. If interference does occur to radio or television reception, which can be determined by turning the equipment off and on, the user is encouraged to try to correct the interference by one or more of the following measures:

- Reorient or relocate the receiving antenna.
- Increase the separation between the equipment and the receiver.
- Connect the equipment to an outlet on a circuit different from that to which the receiver is connected.
- Consult Customer Care at +1 (877) 455-7387

NOTICE: Modification or changes to this equipment not expressly approved by Radio Systems Corporation may void the user's authority to operate the equipment.



Important Recycling Advice

Please respect the Waste Electrical and Electronic Equipment regulations in your country. This equipment must be recycled. At the end of the product life, do not place it in the normal municipal waste system. Please check the regulations in your area or return it to where it was purchased so that it can be placed in our recycling system. If these options are not possible, please contact the Customer Care Center for further information.



Batteries: Disposal

- Separate collection of spent batteries is required in many regions. Check the regulations in your area before discarding spent batteries.
- At the end of the product life, please contact one of our Customer Care Centres to receive instructions on proper disposal of the unit. Please do not dispose of the unit in household or municipal waste.
- For a listing of Customer Care Centre telephone numbers in your area, visit our website at www.freespiritpetproducts.com.

Warranty

This product comes with a one year, non-transferable, limited warranty. Should this product mechanically fail within one year of purchase, please contact us.

Contact Us

+1 (877) 455-7387
freespiritpetproducts.com

Bark Collar

FS-BARK



Important Safety Information

Explanation of Attention Words and Symbols Used in this Guide



This is the safety alert symbol. It is used to alert you to potential personal injury hazards. Obey all safety messages that follow this symbol to avoid possible injury or death.



WARNING indicates a hazardous situation which, if not avoided, could result in death or serious injury.



CAUTION, used with the safety alert symbol, indicates a hazardous situation which, if not avoided, could result in minor or moderate injury.



CAUTION, used without the safety alert symbol, indicates a hazardous situation which, if not avoided, could result in harm to your pet.



NOTICE, is used to address practices not related to personal injury.



- Do not use this product if your pet is aggressive or is prone to aggressive behavior. Aggressive pets can cause severe injury and even death to owners and others. If you are unsure whether this product is appropriate for your pet, please consult your veterinarian or a certified trainer.



- This product is not a toy; keep away from children. Use it only for pet training purposes.



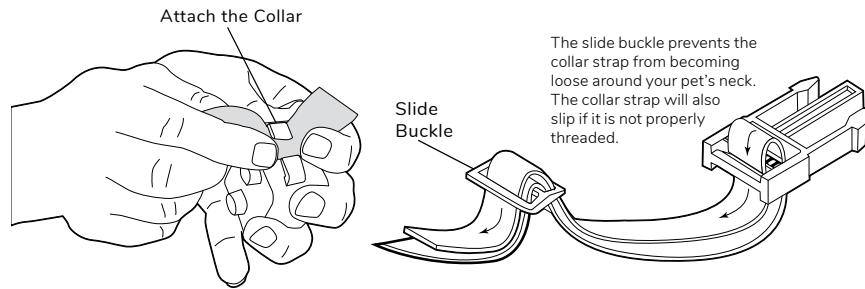
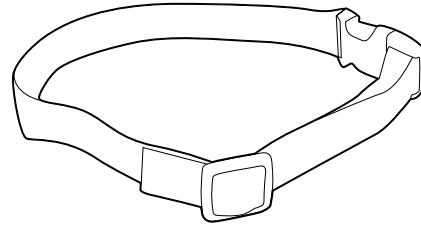
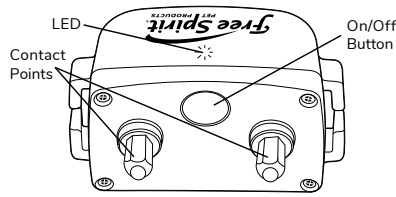
- Proper fit of the bark collar is important. A bark collar worn for too long or made too tight on a pet's neck may cause skin damage, ranging from redness to pressure ulcers. This condition is commonly known as bed sores.
- Avoid leaving the bark collar on a pet for more than 12 hours per day.
- When possible reposition the bark collar on a pet's neck every 1 to 2 hours.
- Regularly recheck the fit to prevent excessive pressure; follow the instructions in this guide.
- Never connect a leash to the bark collar; it will cause excessive pressure on the contact points.
- When connecting a leash to a separate collar, do not allow it to put pressure on the bark collar.
- Wash the pet's neck area and the contact points of the bark collar weekly with a damp cloth.
- Examine the contact area daily for signs of a rash or a sore.
- If a rash or sore is found, discontinue use of the bark collar until the skin has healed.
- If the condition persists beyond 48 hours, see your veterinarian.
- For additional information on bed sores and pressure necrosis, please visit our website.
- This product must be used only on healthy dogs. If you're not certain that your pet is in good health, we recommend that you take your pet to a veterinarian before using this product.



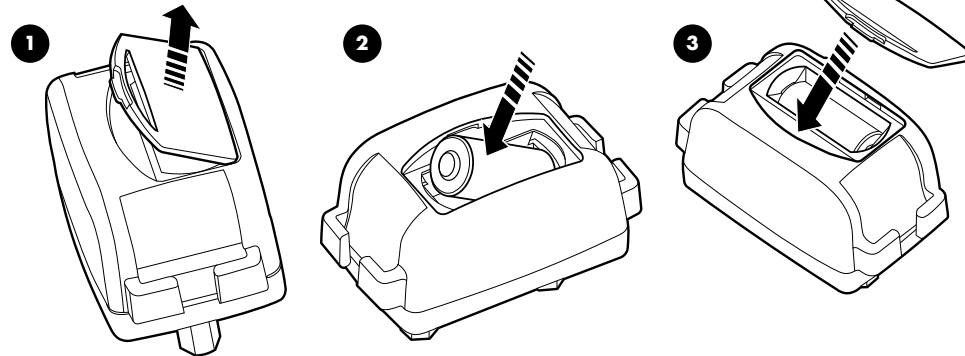
- Do not mix old and new batteries.
- Do not mix standard, alkaline or rechargeable batteries.
- Do not use rechargeable batteries.
- Exhausted batteries should be removed immediately. Do not dispose of batteries with household waste.

In the Box

- 6V Battery (installed)
- Bark Collar
- Strap
- Contact Points (installed)



Insert/Remove the Battery 6V Alkaline



1. Press the latch, pull up and remove the battery door.

2. Insert the battery, ensuring that the + (plus) and - (minus) terminals are aligned correctly.

3. Replace the battery door.

Features

- Prevents barking and whining
- 15 levels of shock
- 6V replaceable battery installed
- Waterproof Bark Collar

How It Works

The Free Spirit® Bark Collar is used to subdue excessive barking by emitting a shock correction that increases after each bark until the barking stops. When your dog barks, the bark collar emits a shock correction at the lowest level. The bark collar continues to analyze your dog's behavior and will automatically raise or lower the intensity to the appropriate level until the dog stops barking.

To assure a proper fit, please follow these steps:

1. Start with the bark collar turned off and your dog standing comfortably, not sitting.
2. Place the bark collar on your dog's neck with the contact points touching the skin.
3. Insert one finger between the bark collar and your dog's neck to check the tightness. The fit should be snug but not constricting.
4. Allow your dog to wear the bark collar for several minutes, then recheck the fit. Check the fit again as your dog becomes more comfortable with the bark collar.

NOTE: It is sometimes necessary to trim the hair around the contact area to make sure that contact is consistent. However, you should never shave your pet's neck as this may increase risk of skin irritation.

NOTE: This bark collar can only be activated by your dog's barking. Outside sounds, including other dogs' barking, will not result in a correction.

On

To power the bark collar on, press and release the on/off button. The LED will flash red 3 times to confirm it has powered on.

While on, the LED will flash 1 time every 5 seconds to indicate good battery, or 3 times every 5 seconds to indicate low battery.

Off

To power the bark collar off, press and hold the on/off button. When the solid red LED begins to flash, release the button. The bark collar will then be powered off.

NOTE: To confirm the LED is flashing, view in a darker area. The LED may appear dim in brightly lit areas.

Terms of Use and Limitation of Liability

1. Terms of Use

The use of this product is subject to your acceptance without modification of the terms, conditions and notices contained with this product. Use of this product implies acceptance of all such terms, conditions, and notices. If you do not wish to accept these terms, conditions, and notices, please return the Product, unused, in its original packaging and at your own cost and risk to the relevant Customer Care location together with proof of purchase for a full refund.

2. Proper Use

Proper Use includes, without limitation, reviewing the entire Product Manual and any specific safety information statements. The specific temperament or size/weight of your pet may not be suitable for this product. If you are unsure whether this Product is appropriate for your pet, please consult your veterinarian or certified trainer prior to use. For products used with pets where training is desired, Radio Systems Corporation recommends that these training products are not used if your pet is aggressive and accepts no liability for determining suitability in individual cases.