

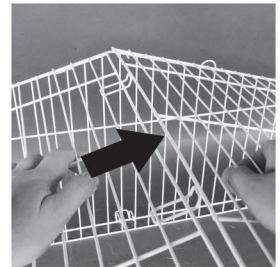
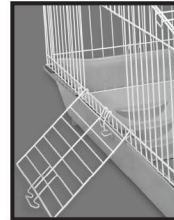
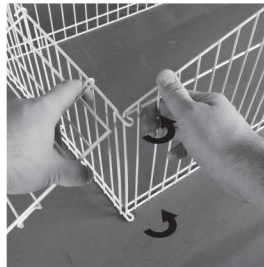
### Step 1

Hook the right and the left sides of the wire cage and panels onto the back corners with the cage clips facing out.



Then hook the sides to the front ensuring the door opens outward.

Last, hook the top left under the top right to close the wire cage.

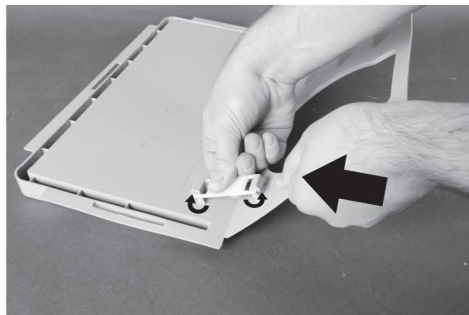


**Important:**  
Door Opens Out

### Step 2

Connect the Plastic Shelf Clip onto the two hooks located on the bottom of the Shelf/Ramp/Hideout on the left side. Repeat on the right side.

Place the Shelf/Ramp/Hideout Combo in the cage so that it rests on the edge of the cage base.



### Step 3

Place the assembled wire cage set onto the plastic Base and use the Wire Cage Clips to lock the wire to the Base on all four sides.



**ware cares**<sup>™</sup>

We care about the carbon pawprint we leave as a company and are committed to using recycled and recyclable material in the manufacturing of our packaging and pet products.

If you have any questions or concerns about this product contact our customer service department at 1-800-295-2243 Mon-Fri 8:00 - 4:00 MST or email us at [hello@warepet.com](mailto:hello@warepet.com)

#30016024

Ware Mfg., Inc. claims copyright protection under U.S. and International Copyright Law in the attached sculptural work and in the content of this packaging. Copyright ©2019 Ware Mfg., Inc. All rights reserved.