

**FELIWAY<sup>®</sup> Optimum Delivers Calming Messages:**

Cats naturally produce invisible calming messages known as pheromones.

**FELIWAY<sup>®</sup> Optimum** contains the patented<sup>1</sup> latest generation of Feline Pheromone Complex developed by the **FELIWAY<sup>®</sup>** research team that mimics these pheromones. This pheromone complex delivers advanced calming messages<sup>2</sup>, helping your cats feel comfortable and secure at home.

**FELIWAY<sup>®</sup> Optimum** brings the best of feline calming pheromones for improved results<sup>2</sup>.

**FELIWAY<sup>®</sup> Optimum** calms cats better than ever<sup>2</sup>. Helps with more signs of stress and in more situations<sup>2</sup>.

**FELIWAY<sup>®</sup> Optimum is safe:**

- 🐾 When used as recommended.
- 🐾 When used in combination with medications or other treatments.
- 🐾 For all life stages from young kittens to older cats.

**FELIWAY<sup>®</sup> Optimum** is NOT a sedative or tranquilizer.

**FELIWAY<sup>®</sup> Optimum** is for cats only. Only your cat can detect this pheromone. Dogs and people are not affected.

In some cases, additional behavioral treatment and environmental modifications may be required and advice should be sought from your veterinarian. If there are signs of disease, consult your veterinarian.

All cats are unique. Results may vary depending on the presence of other pets and other environmental factors.

<sup>1</sup> See [us.feliway.com/patents](https://www.us.feliway.com/patents) for patent information.

<sup>2</sup> More signs of stress and more situations than either **FELIWAY<sup>®</sup> Classic** or **FELIWAY<sup>®</sup> Multicat**.

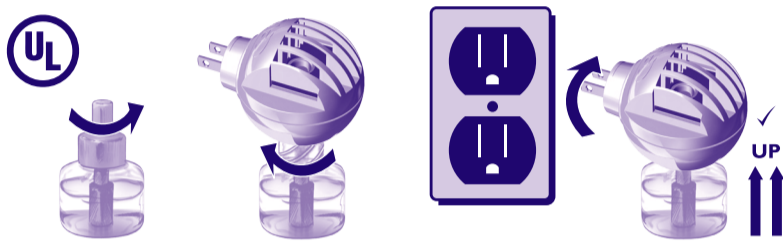
**Usage instructions:**

Plug diffuser into outlet in the room where the cat spends the most time.

For best results, keep the diffuser plugged in 24/7 and use for at least 30 days.

Use only in properly functioning **120-volt electrical outlets**.

**DO NOT use with extension cords, adapters or converters.**



**FELIWAY<sup>®</sup> Optimum** pheromone is spread throughout the room via a heated diffuser, which may be warm to the touch. The diffuser is protected from overheating by an internal safety device. Some people may perceive a slight scent from the diffuser during the first hours of use.

**Diffuser Power Indicator Light**

When plugged into a functioning outlet, a light on the diffuser will indicate that the heater is receiving power. If the indicator light does not turn on, check to ensure the outlet is functioning properly by plugging a different working device into the outlet (e.g., a lamp). If the diffuser light still does not turn on, please contact **FELIWAY<sup>®</sup>** product support line at (800) 999-0297.

**🐾 FELIWAY<sup>®</sup> Optimum Diffuser plug-in & Refill 48 mL**

Feline Pheromone Complex (FPhC) .....	2%
Isoparaffinic hydrocarbon .....	48 mL

Each 48 mL vial lasts up to 30 days and covers up to 700 sq ft.

**DANGER.**

**HARMFUL OR FATAL IF SWALLOWED.**

CALL PHYSICIAN IMMEDIATELY IF INGESTED.

DO NOT INDUCE VOMITING.

Contains petroleum distillates (i.e. Isoparaffinic Hydrocarbon).

KEEP OUT OF REACH OF CHILDREN.

Read label and insert prior to use.

If product contacts skin, wash with plenty of water.

Dispose of contents and container in accordance with local regulations.

**IMPORTANT SAFETY INSTRUCTIONS**

**Read all the instructions before using the product.**

**This product is not a toy. Intended for adult use only.**

**Keep out of reach of children.**

When using electric products, basic precautions should always be followed. To reduce the risk of injury, close supervision is necessary when a product is used near children. **DO NOT** put fingers, hands, metal or other foreign objects in the product. **DO NOT** disassemble diffuser unit or modify the plug in any way. There are **NO** user serviceable parts on this device. If the diffuser unit blocks the "TEST" or "RESET" buttons of a GFCI receptacle, it is recommended that the unit be removed from the outlet monthly and the GFCI be tested before plugging the electric diffuser unit back into the outlet. The internal parts of this device will get very hot to encourage evaporation of the active ingredient. Do not touch these surfaces during use. The diffuser is protected from overheating by an internal safety device. **DO NOT** attempt to refill the diffuser vial with other liquids or substances. To avoid damage, **DO NOT** place pheromone refill on any surface during use or place any object above the diffuser unit. **DO NOT PLUG** diffuser below any electrical device, under furniture, under any prominent object from the wall or in a multi-socket/multi-plug/extension lead. **MINIMUM CLEAR DISTANCE** above diffuser = 4 ft (1.20 m). **DO NOT** plug in sideways or upside down. **DO NOT** immerse in water. **DO NOT** cover. This may impair or block diffusion of the product and leave residual marks.

Replace the diffuser plug-in device every 6 months. Use **ONLY FELIWAY<sup>®</sup> Optimum** Refills.

Ceva will not be held responsible for damage, injury or poor performance caused by use of any other refills in Ceva diffusers.

**SAVE THESE INSTRUCTIONS.**

**FELIWAY<sup>®</sup>** is a registered trademark of Ceva Santé Animale S.A.

Ceva Animal Health, LLC  
8735 Rosehill Rd., Ste. 300, Lenexa, KS 66215  
800-999-0297

[www.feliway.com](https://www.feliway.com)

©2023 Ceva Animal Health, LLC

D92110K 08-AI-v2

NOT FELIWAY OPTIMUM 48ML US  
520.7x160  
Recto Verso  
CODE ARTICLE : A4191-01  
P2685

FELIWAY OPTIMUM DIFF+REFILL 48ML US  
ID81674 - 81675  
CORPS : 12 pts

MYRIAM 21/09/23 - 22/09/23 - 09/10/23 - 24/10/23 - 08/11/23 - 20/11/23