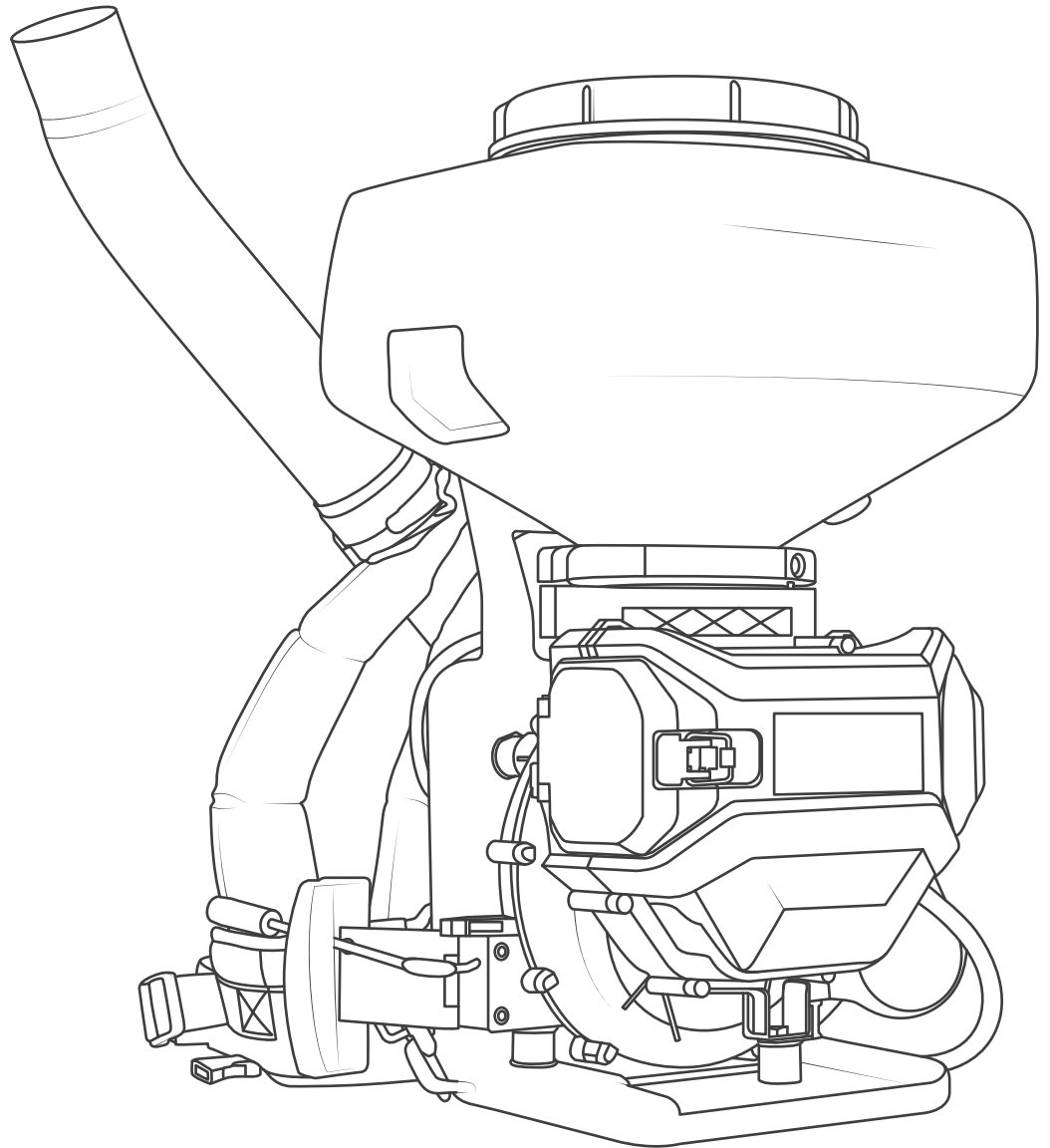


# TOMAHAWK

## BATTERY POWERED FERTILIZER SPREADER

MODEL NUMBER: eTGS30

Operation Manual



To reduce the risk of injury, the user must read and understand the Operator's Manual before using this product. Save these instructions for future reference.

# TABLE OF CONTENTS

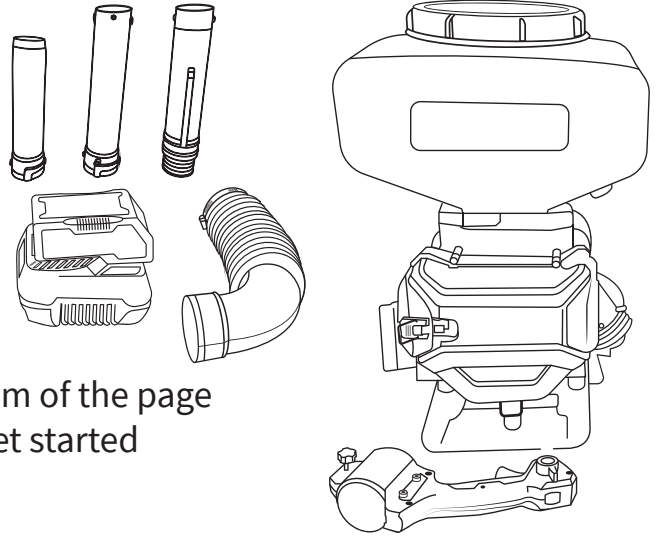
<b>1. SAFETY INFORMATION</b>	<b>4</b>
<b>2. OPERATING SAFETY</b>	<b>5</b>
2.1 General Notes	5
2.2 Usage Safety	5
2.3 Chemical Handling	6
2.4 Battery Safety	6
2.5 Service Safety	6
<b>3. EQUIPMENT PERFORMANCE</b>	<b>7</b>
3.1 Backpack Spreader Design	7
3.2 TOMAHAWK® Battery	7
3.3 Specifications	7
3.4 Battery Spreader Parts	8
3.5 Unpacking the Unit	8
<b>4. EQUIPMENT ASSEMBLY</b>	<b>8</b>
4.1 Warnings	9
4.2 Assembly Guide	9
4.3 Spreading	9
<b>5. CHARGING THE BATTERY</b>	<b>12</b>
5.1 Warnings	12
5.2 How to Charge	12
5.3 While Charging	12
5.4 Installing the Battery	12
<b>6. BACKPACK STRAPS ADJUSTMENT</b>	<b>13</b>
<b>7. OPERATION</b>	<b>14</b>
7.1 Holding the Tool	14
7.2 Starting and Stopping the Machine	14
7.3 Cruise Control Setting	15
7.4 Filling the Tank	15
7.5 Leaf Blowing Tips	16
<b>8. STORAGE</b>	<b>16</b>
<b>9. REPLACEMENT PARTS</b>	<b>17</b>
<b>10. TROUBLESHOOTING</b>	<b>17</b>
<b>11. EQUIPMENT WARRANTY</b>	<b>18</b>
<b>12. PARTS MANUAL</b>	<b>21</b>
<b>13. TOMAHAWK CATALOG</b>	<b>26</b>

# Register Your Equipment

Thank you for purchasing TOMAHAWK® equipment! Your product is covered by the TOMAHAWK® Warranty Policy, but in order to activate your warranty, we need you to register your product. In addition to activating your equipment warranty, product registration will grant you access to important product updates, streamlined customer service, and more.

## INCLUDED WITH YOUR REGISTRATION

- ✓ Equipment Warranty Activation
- ✓ Product Updates
- ✓ Streamlined Customer Service
- ✓ Exclusive Discounts and Sales



## STEPS TO REGISTER YOUR EQUIPMENT

1. Visit [www.tomahawk-power.com](http://www.tomahawk-power.com)
2. Choose “Product Registration” at the bottom of the page
3. Enter your equipment’s serial number to get started
4. Provide all required information
5. Submit Registration

---

# Equipment Resources

TOMAHAWK® Customer Service doesn’t stop at checkout. We understand to keep a job-site running smoothly - the proper equipment, spare parts, instruction manuals, and more are needed at the drop of a hat. Visit [www.tomahawk-power.com](http://www.tomahawk-power.com) to gain access to the incredible resources below.

## How To Video Library

More of a visual person? Visit our Video Library for equipment assembly instructions, troubleshooting tips, and more!

**Found on each product listing or the Service Videos Page**

## Manual and Assembly Guide Library

Visit our Manual Library if you are looking for a lost operations manual or a particular spare part?

**Found on each product listing or the Tomahawk Manuals Page**

## Service Requests

In need of a quick fix or a service center referral? Submit a Service Request and a Tomahawk Technician will respond shortly to get you the help you need.

**Choose “Service Request” at the bottom of [www.tomahawk-power.com](http://www.tomahawk-power.com)**



This manual provides information and procedures to safely operate and maintain this equipment. For your own safety and protection from injury, carefully read, understand, and observe the safety instructions described in this manual.

Keep this manual or a copy of it with the equipment. If you lose this manual or need an additional copy, please contact Tomahawk Power, LLC or visit [www.tomahawk-power.com](http://www.tomahawk-power.com). This equipment is built with user safety in mind; however, it can present hazards if improperly operated or serviced. Follow operating instructions carefully. If you have questions about operating or servicing this equipment, contact TOMAHAWK®.

The information contained in this manual is based on equipment's production at the time of publication. TOMAHAWK® reserves the right to change any portion of this information without notice.

No part of this publication may be reproduced in any form or by any means, electronic or mechanical, including photocopying, without express written permission from TOMAHAWK®.

Any type of reproduction or distribution not authorized by TOMAHAWK® represents an infringement of valid copyrights and will be prosecuted. We expressly reserve the right to make technical modifications, even without due notice, which aim at improving our machines or their safety standards.

## 1. SAFETY INFORMATION

This manual contains DANGER, WARNING, CAUTION, and NOTE callouts which must be followed to reduce the possibility of personal injury, damage to the equipment, or improper service.



This is the safety alert symbol. It is used to alert you to potential personal injury hazards. Obey all safety messages that follow this symbol to avoid possible injury or death.



**DANGER** indicates an imminently hazardous situation which, if not avoided, will result in death or serious injury.



**WARNING** indicates a potentially hazardous situation which, if not avoided, could result in death or serious injury.



**CAUTION** indicates a potentially hazardous situation which, if not avoided, may result in minor or moderate injury.



Indicates a possibly dangerous situation. Where there is a risk of damaging the machine or its individual components.



Indicates to read the Operation Manual. It is important that you read the operation manual before first use and keep it in a safe place for future reference.

## 2. OPERATING SAFETY



**WARNING** Familiarity and proper training are required for the safe operation of equipment! Equipment operated improperly or by untrained personnel can be dangerous! Read the operating instructions contained in both this manual and the engine manual and familiarize yourself with the location and proper use of all controls. Inexperienced operators should receive instruction from someone familiar with the equipment before being allowed to operate the machine.

### 2.1 General Notes

**2.1.1** Individuals who operate this machine must be informed about the dangers related to use of the machine.

**2.1.2** Keep bystanders, especially children and animals, away from the work area.

**2.1.3** The user is responsible for avoiding injury to third parties or damage to their property.

**2.1.4** If you have any condition that might be aggravated by strenuous work, check with your doctor before operating this power tool.

**2.1.5** Minors should never be allowed to use this product.

### 2.2 Usage Safety

**2.2.1 NEVER** lend or rent your power tool without the instruction manual. Be sure that anyone using it understands the information contained in this manual.

**2.2.2 NEVER** operate the machine if you are under the influence of any substance (drugs, alcohol) which might impair vision, dexterity, or judgment.

**2.2.3 NEVER** operate the machine near open flame or explosive areas.

**2.2.4 NEVER** expose machine to wet conditions.

**2.2.5 NEVER** handle machine with wet hands.

**2.2.6 ALWAYS** wear ear protection.

**2.2.7 OBSERVE** all applicable local safety regulations, standards, and ordinances.

## 2.3 Chemical Handling

**2.3.1 ALWAYS** wear eye protection when handling chemicals.

**2.3.2 ALWAYS** wear the proper protective equipment/clothing when handling chemicals. Proper protective equipment includes safety goggles or glasses, mask/respirator, and a long-sleeved shirt and long pants.

**2.3.3 ALWAYS** use mask to protect mouth and face from dust and/or pesticide when handling chemicals.

**2.3.4 ALWAYS** after spreading, wash hands and clothing immediately.

## 2.4 Battery Safety

**2.4.1 NEVER** store or charge battery in wet conditions.

**2.4.2 NEVER** make any adjustments to the tool if battery is connected.

**2.4.3 NEVER** interfere with the batteries integrity as this can cause injury and void warranty.

**2.4.4 NEVER** use or dispose battery in fire as this can cause it to explode. Check local codes for more information on proper battery disposal.

**2.4.5 NEVER** use equipment if it has been damaged or modified as this can cause injury.

**2.4.6** When not in use, ensure battery is stored in a dry place away from any flammable objects.

**2.4.7** Allow battery to cool down after each use to avoid burn injuries.

**2.4.8** Only use the manufacturer's designated battery with this machine. Use of any other battery can damage unit and will void warranty.

**2.4.9** Battery leakage may occur when operated in extreme temperature conditions.

If battery liquid contacts skin, wash immediately with water and soap, following with white distilled vinegar or lemon juice to neutralize. If the liquid comes in contact with eyes, flush out eyes with water for 10 minutes and seek medical attention immediately.

**2.4.10** Have all servicing done by an approved TOMAHAWK® Technician or Service Center with original replacement parts.

## 2.5 Service Safety



**WARNING** Poorly maintained equipment can become a safety hazard! In order for the equipment to operate safely and properly over a long period of time, periodic maintenance and occasional repairs are necessary.



**WARNING** Always follow the chemical manufacturer's instructions, safety guidelines, and recommendations when using any chemicals/solutions with this machine.

### 3. EQUIPMENT PERFORMANCE

#### 3.1 Backpack Fertilizer Spreader Design

TOMAHAWK® Battery Powered Fertilizer Spreaders are your best solution for revolutionary lawn care. Powered by a 36V/7.5Ah Lithium-Ion battery and a powerful brush-less motor, this spreader offers high performance with minimal environmental impact. With a reach of 25 - 30 feet, cover large areas efficiently, ensuring even distribution of fertilizer, seeds, or ice melt.

#### 3.2 TOMAHAWK® Battery

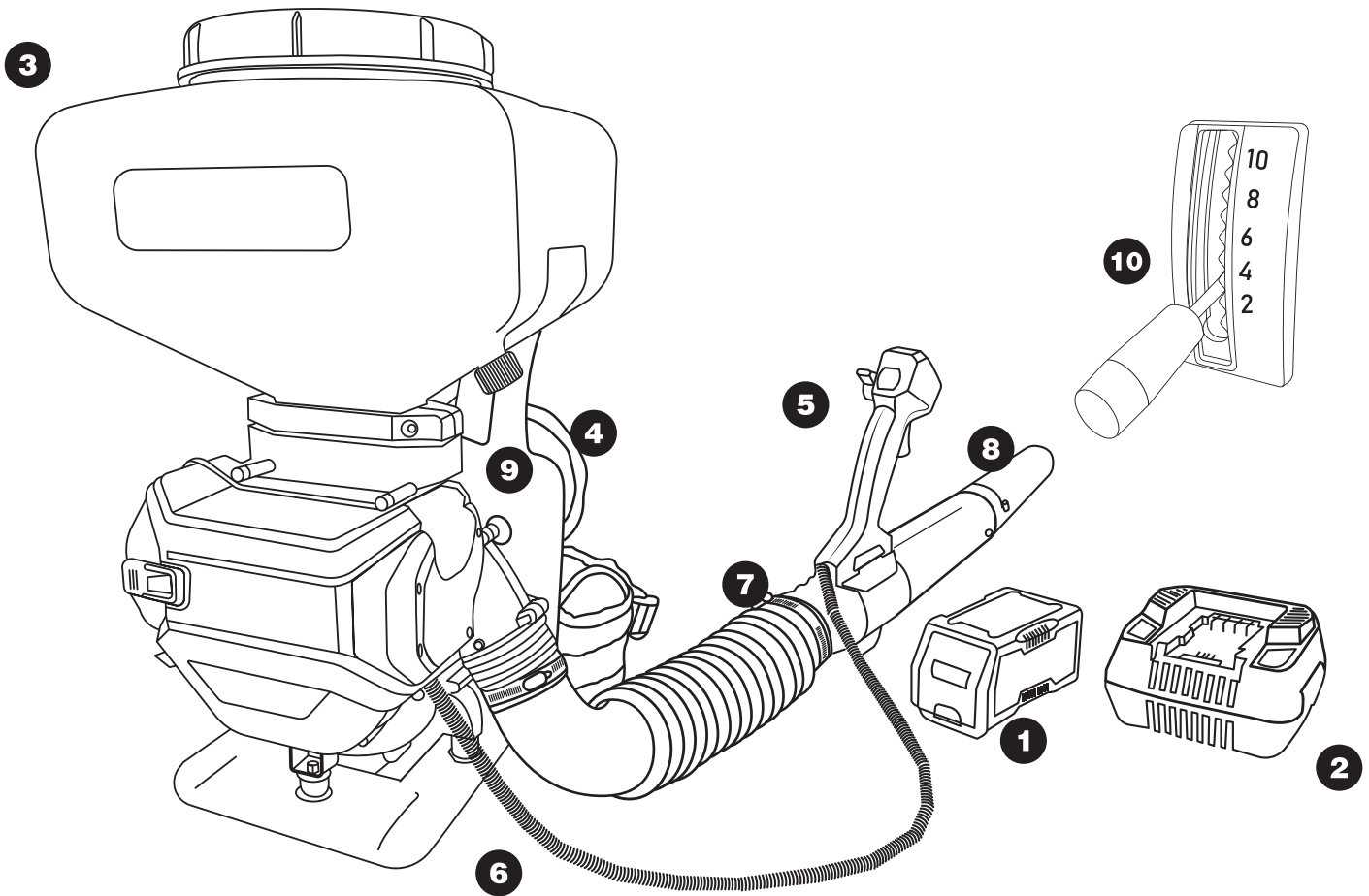
TOMAHAWK® 36V Lithium-Ion 7.5 Ah batteries charge faster and work longer than standard batteries, giving you superior performance. With a fast charge time, spend more time working on the things that matter and less time waiting for a charge.

#### 3.3 Specifications

<b>eTGS30 BATTERY POWERED SPREADER</b>	
<b>Tank Size</b>	5 Gallons (18.9 Liters)
<b>Power</b>	0.7 kW
<b>Battery Capacity</b>	7.5 Ah
<b>Battery Life</b>	Up to 2 hrs at half load, 1 hr at full load
<b>Charge Time</b>	2 Hours
<b>Voltage</b>	36V
<b>Sray Reach</b>	25 - 30 Feet (7.6 - 9.1 meters)
<b>Sprayer Weight</b>	18 Lbs (8.1 kg)
<b>Dimensions</b>	15"x 13"x 22" (38.1x33x55.8cm)
<b>Warranty</b>	1 Year

### 3.4 Backpack Fertilizer Parts

- |                             |                     |                          |
|-----------------------------|---------------------|--------------------------|
| 1. 36V Lithium-Ion Battery  | 4. Backpack Straps  | 7. Connecting Pipe       |
| 2. Battery Charging Station | 5. Throttle Control | 8. Blower Pipe           |
| 3. Tank                     | 6. Accordion Pipe   | 9. Protective Frame      |
|                             |                     | 10. Volume Control Lever |



### Additional Parts

- Tool Kit
- Pipe Clamps

### 3.5 Unpacking the Unit

Make sure to carefully remove all parts and accessories from the box. Ensure all parts listed in the manual are in the box. Do not throw away the packaging or packing material until you have inspected all parts and successfully operated the machine. Do not discard this operations manual.

If any parts are missing or damaged, please contact TOMAHAWK® customer support by email at [support@tomahawk-power.com](mailto:support@tomahawk-power.com) or call (866) 577-4476.



## 4. EQUIPMENT ASSEMBLY

### 4.1 Warnings



**WARNING** To avoid injury or damage to this machine, the blower tube must be used when operating this backpack fertilizer spreader.

**NOTE:** The blower tube is not assembled on this unit.



**WARNING** If any parts are missing or damaged, do not operate this backpack fogger. Failure to do so may result in personal injury or damage to this machine.



**WARNING** Never make modifications or fabricate accessories to be used with this machine. Modifications or alterations may result in personal injury or damage to this machine.



**WARNING** Do not connect the battery before the machine is fully assembled. Failure to comply may cause accidental starting and may result in personal injury or damage to this machine.

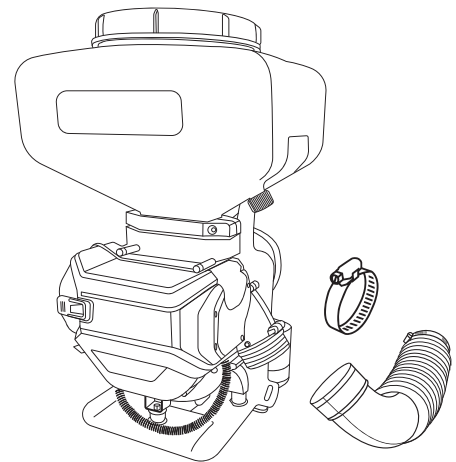


**WARNING** To prevent personal injury or damage to this machine, ensure the machine is OFF, the battery is removed, and the impellers have stopped before removing any parts.

### 4.2 Assembly Guide

**4.2.1** Connect the accordion pipe to the spreader's blower housing. Fasten in place using a phillips head screwdriver and the hose clamp.

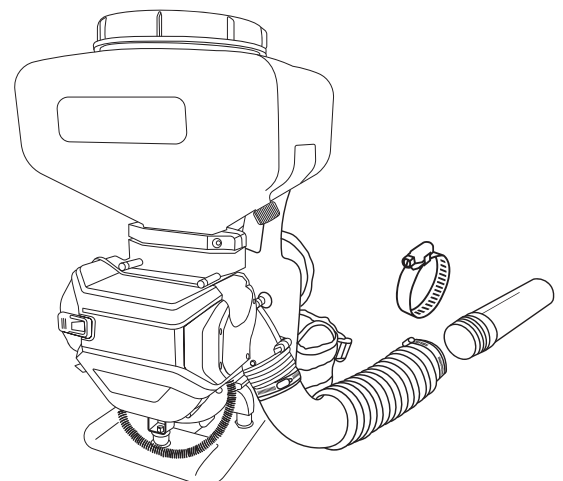
**FIGURE 1.**



**FIGURE 1**

**4.2.2** Attach the connecting pipe to the other end of the accordion pipe. Fasten in place using a phillips head screwdriver and the hose clamp.

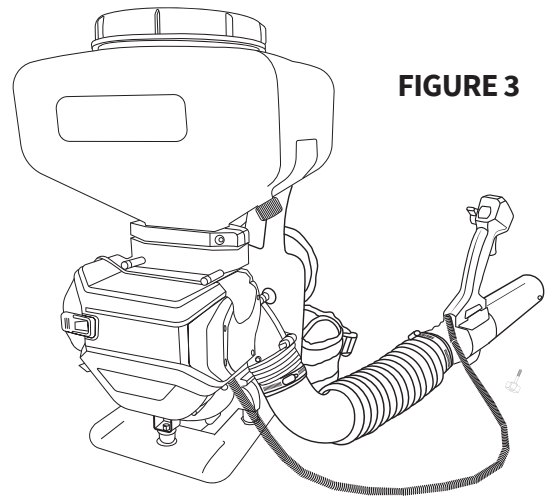
**FIGURE 2.**



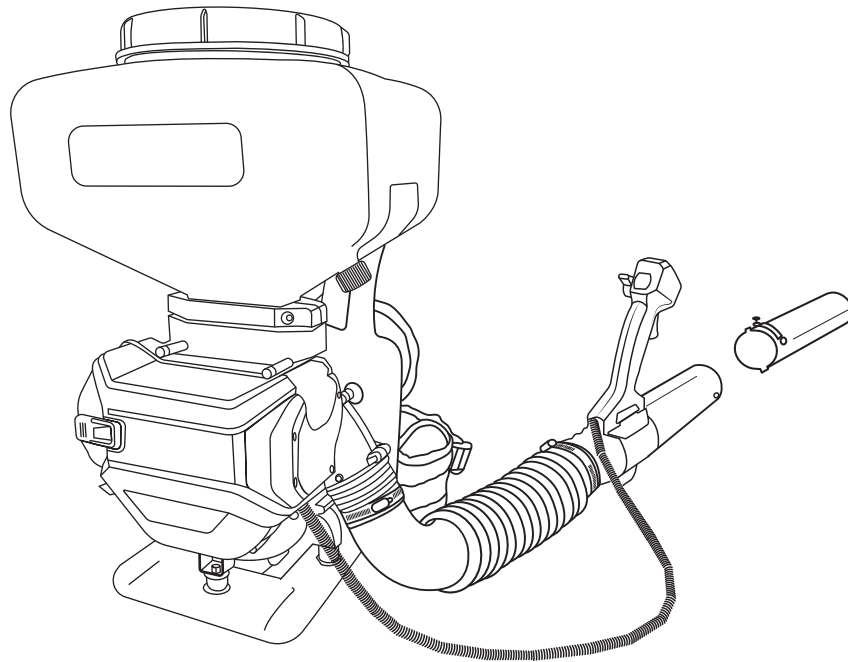
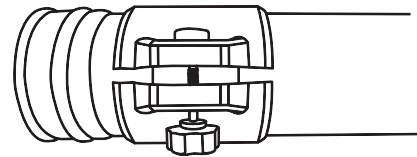
**FIGURE 2**

**4.2.3** Slide the throttle control handle over the connecting pipe and secure in place with the screw. **FIGURE 3.**

**4.2.4** Connect the blower pipe to the other end of the connecting pipe. Twist to lock in place. **FIGURE 4.**

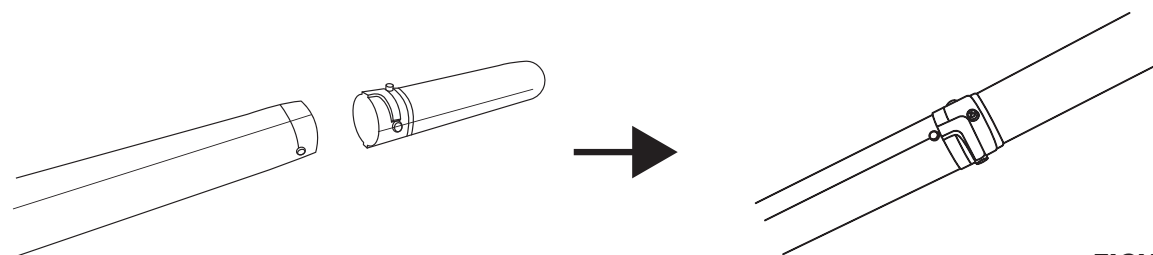


**FIGURE 3**



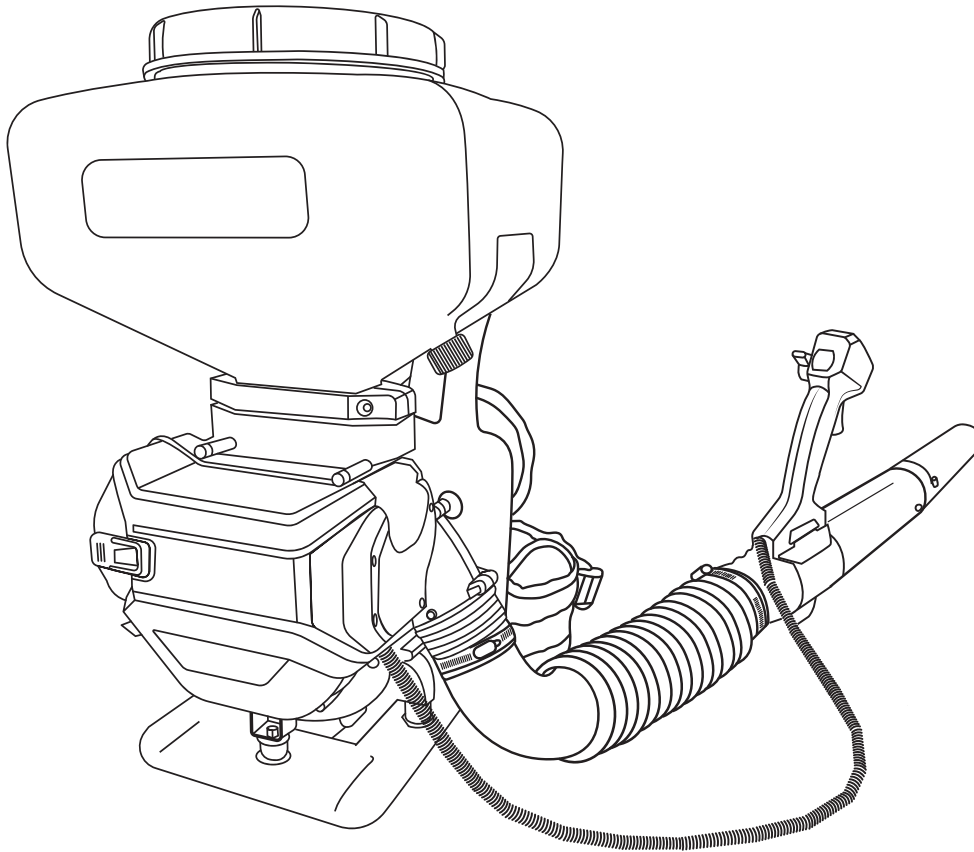
**FIGURE 4**

**NOTE:** When connecting the extension pieces twist to lock in place. **FIGURE 5.**



**FIGURE 5**

**4.2.5** The eTGS30 Battery Powered Fertilizer Spreader is fully assembled. **FIGURE 6.**



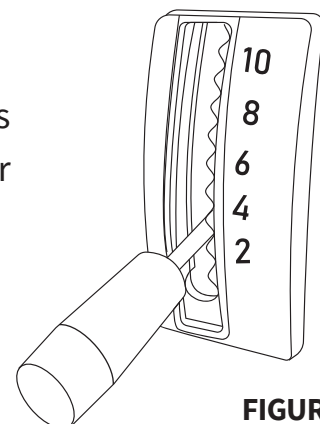
**FIGURE 6**

### **4.3 Spreading**

**4.3.1** The throttle handle will control the speed of the engine- to adjust the distance and spread of the granules spread.

**4.3.2** The volume control lever [**FIGURE 7**] adjusts the amount granular chemicals that leave the tank. In the down position no granular chemicals will spread. In the up position the maximum amount of granules will exit the fertilizer spreader.

**NOTE:** At full throttle with the lever all the way up the this machine will spread up to 38 lbs of fertilizer/ small granular per minute.



**FIGURE 7**

## 5. CHARGING THE BATTERY

### 5.1 Warnings



**WARNING** Do not insert any electrically conductive objects in the charging socket or the battery may be damaged by a short circuit.



**WARNING - DANGER OF FIRE** - A short circuit in the charging socket can lead to a cable fire in the battery.



The charger has a fully electronic voltage and current limitation function. This ensures that a connected battery is always kept at the optimum state of charge. This prevents overcharging of the battery. The battery is not fully charged on delivery. It is recommended to fully charge the battery before operating the machine for the first time.

### 5.2 How to Charge

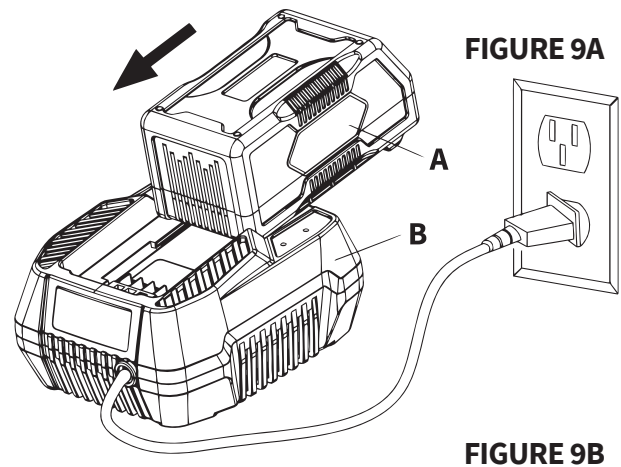
**5.2.1** Remove the battery from the machine.

**5.2.2** Plug the charger into a power outlet in a dry location. **FIGURE 9A.**

**5.2.3** Align the tongue of the battery (**A**) with the guides in the charging dock (**B**).

**5.2.4** Slide the battery into the charger docking station using the guides on the battery and charger docking station.

**FIGURE 9A.**



### 5.3 While Charging

**5.3.1** The LED indicator on the charger lights up RED during charging.

**5.3.2** The charging of the battery takes approximately 2 hours.

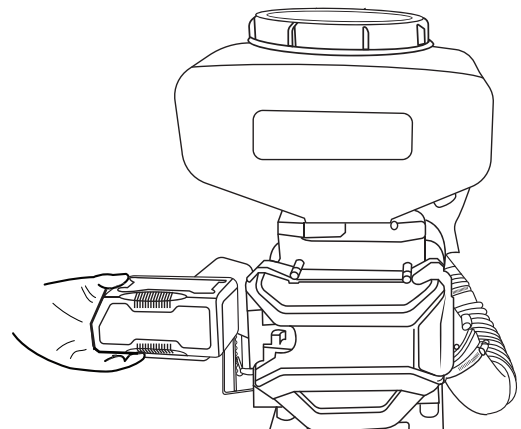
**5.3.3** The LED indicator on the charger lights up green when finished charging.

### 5.4 Installing the Battery

**5.4.1** Open the door of the machine's battery compartment. **FIGURE 9B.**

**5.4.2** Align the tongue of the battery with the guides in the battery compartment.

**5.4.3** Grasp the machine firmly and slide the battery into the compartment until the battery release button locks into place. Close the compartment door.



**NOTE:** Never force the battery pack. It should slide and click into place.

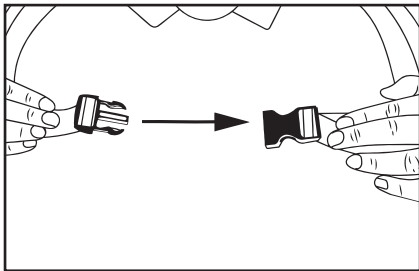
## 6. BACKPACK STRAPS ADJUSTMENT

Make sure your backpack straps and harness are well adjusted for proper operation. Adjust the straps for comfortable machine placement. Adjust the cross-body harness so the machine weight is equally distributed across the operator's shoulders.

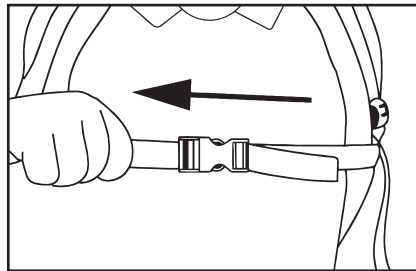


**6.1.1** Once the machine is comfortable on your back, connect the top horizontal chest buckle **FIGURE 10** and then tighten by pulling on the end of the strap. **FIGURE 11**.

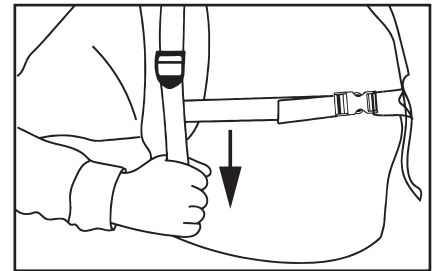
**6.1.2** Pull the ends of the backpack straps downward to tighten. **FIGURE 12**.



**FIGURE 10**

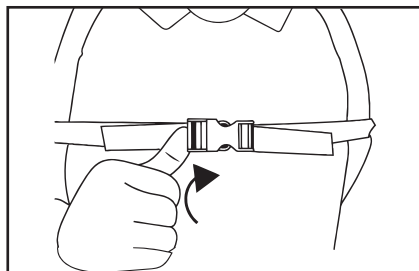


**FIGURE 11**

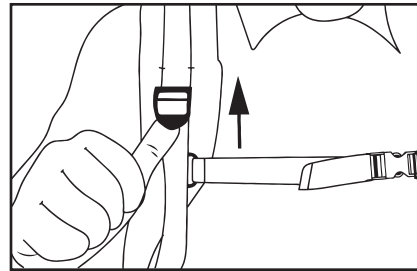


**FIGURE 12**

**6.1.3** Lift the back tabs of the buckles to loosen the backpack straps. **FIGURE 13**. **FIGURE 14**.



**FIGURE 13**



**FIGURE 14**



**WARNING** In the event of imminent danger, the machine must be removed quickly. The horizontal chest strap must be released first before setting the machine on the ground.

## 7. OPERATION

### 7.1 Holding the Tool

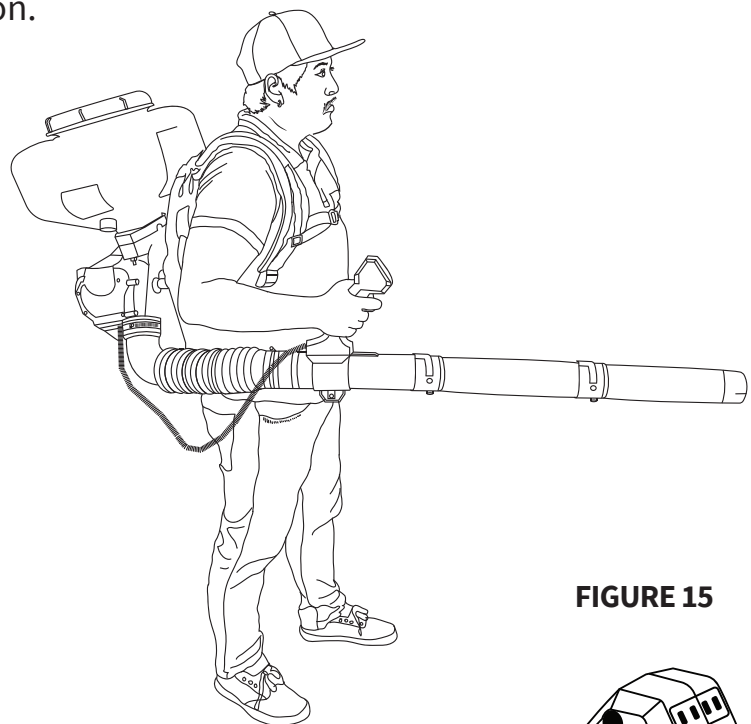
**7.1.1** The operator should always wear the proper personal protective equipment/clothing (PPE) when handling this tool. PPE includes mask/respirator, safety goggles, ear protection, boots, gloves, and a long-sleeved shirt and long pants to cover as much exposed skin as possible.

**7.1.2** Lifting the unit with a full tank may be difficult. Always lift the unit by placing it on a level wall or the back of a truck and then putting on the straps.

**7.1.3** This tool is design to be operated with one hand.

**7.1.4** This tool operates with a gravity fed tank. The nozzle should always be angled downward or parallel with the ground. **FIGURE 15.**

**NOTE:** Pointing the nozzle up will disrupt the gravity feed, causing issues with the spread pattern and proper machine operation.



**FIGURE 15**

### 7.2 Starting and Stopping the Machine

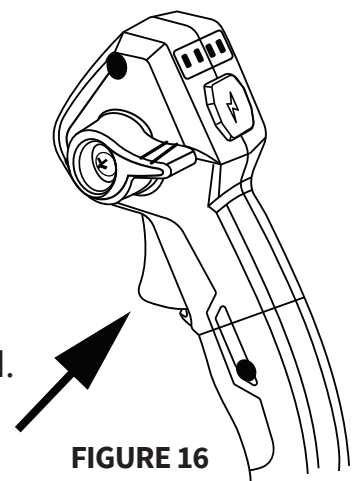
**7.2.1** Before starting the spreader, ensure that the machine is in perfect condition to ensure safe operation.

**7.2.2** Install the battery into the machine's battery compartment.

**7.2.3** To start, squeeze the red trigger on the throttle control lever.

**7.2.4** Squeeze the trigger more or less to change the spreading speed.

**7.2.5** Release the trigger to stop the machine. **FIGURE 16.**



**FIGURE 16**

### 7.3 Cruise Control Setting

This tool's throttle control handle includes a cruise control function to set and lock your ideal blowing speed.

**7.3.1** Start the machine's spreading by squeezing the red trigger (**A**) on the throttle control handle.

**7.3.2** Once you have found your ideal blowing speed, pull the red lever (**B**) back clockwise to lock the speed at the desired setting.

**7.3.3** To increase or decrease the blowing speed, push the red lever (**B**) counter-clockwise to disengage the Cruise Control Setting, then squeeze the red trigger (**A**) to find your new desired blow setting. Pull the red lever (**B**) back clockwise again to lock in place.

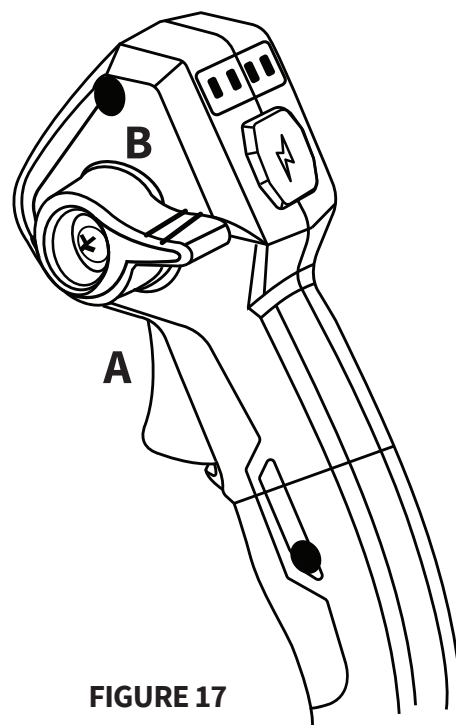


FIGURE 17

**NOTE:** Always disengage the Cruise Control Setting before removing the battery from your machine. Failure to comply will cause the machine to start immediately when reinstalling the battery, which may result in personal injury or damage to this machine.

### 7.4 Filling the Tank

**7.4.1** Keep the dust lever down.

**7.4.2** Remove the lid and pour the granules in the tank, being careful not to spill it. Only fill the tank with the amount to be spread.

**7.4.3** Fasten the lid on the tank. If the lid is loose, it may affect the operation.



**WARNING** Always follow the chemical manufacturer's instructions, safety guidelines, and recommendations when using any chemicals/solutions with this machine.

## **7.5 Leaf Blowing Tips**

**7.5.1** Use brooms and/or rakes to loosen leaves and debris before blowing.

**7.5.2** Hold the throttle control handle firmly. Sweep the blower nozzle from side to side, while keeping the nozzle several inches above/around the ground or any foliage.

**7.5.3** Walk slowing, while keeping the collected pile of leaves and debris in front of you.

**7.5.4** Low speeds are recommended for blowing dry leaves and debris.

**7.5.5** Operate a high speed for moving large debris or gravel.

**7.5.6** Make sure that the nozzle is not directed at anybody or any loose debris before starting the machine.

**7.5.7** Ensure that the machine is in perfect condition to ensure safe operation. Make sure all pipes, tubes, and other parts are in place and secure.

**7.5.8** Keep clear of open windows, children, pets, and blow leaves and debris safely away.

## **8. STORAGE**

**8.1.1** Empty the tank of all chemicals and flush the system.

**8.1.2** Secure the equipment during transportation in order to avoid transport damage.

**8.1.3** ALWAYS Store the equipment upright, in a lockable, dry area - out of reach of children and unauthorized persons.



## 9. REPLACEMENT PARTS

**9.1.1** For replacement parts and technical questions visit [www.tomahawk-power.com](http://www.tomahawk-power.com) or scan the QR code on the front of this manual.

**9.1.2** Not all equipment components are available for replacement. The illustrations within this manual are a convenient reference to the location and position of parts in the assembly sequence.

**9.1.3** When ordering parts, the following may be required: equipment model number, serial number/lot, date code, and description. The manufacturer reserves the right to make design changes and/or improvements to equipment, parts, accessories, and manuals without notice.

## 10. TROUBLESHOOTING

PROBLEM	POSSIBLE CAUSES	SOLUTION
<b>Unit will not start</b>	Battery is Not Charged	Charge Battery
	Battery is Not Securely Attached	Install Battery Correctly
	Issue with Power Switch	Ensure Power Switch Is Positioned Correctly And Not Defective
<b>Unit will not spread</b>	Tank Valve is Jammed	Fix
	Battery is Low On Charge	Charge Battery
<b>Battery is not charging</b>	Charger is Not Functioning	Ensure Wires are Connected Properly. Check That Led Is Displaying Green Light
	Battery is Damaged	Replace Battery

## **11. EQUIPMENT WARRANTY**

Your new TOMAHAWK® equipment is warranted to the original purchaser for a period of one-year (12 months) from the original date of purchase. The TOMAHAWK® warranty is against defects in design, materials and workmanship.

The following are not covered under the warranty:

**11.1.1** Damage caused by abuse, misuse, dropping or other similar damage caused by or as a result of failure to follow assembly, operation or user maintenance instructions.

**11.1.2** Alterations, additions or repairs carried out by persons other than TOMAHAWK® or their recognized agents.

**11.1.3** Transportation or shipment costs to and from TOMAHAWK® or their recognized agents, for repair or assessment against a warranty claim, on any machine.

**11.1.4** Materials and/or labor costs to renew, repair or replace components due to fair wear and tear.

**11.1.5** TOMAHAWK® and/or their recognized agents, directors, employees or insurers will not be held liable for consequential or other damages, losses or expenses in connection with or by reason of or the inability to use the machine for any purpose.

### **Warranty Claims**

Before submitting any warranty claim, you will need to register your new TOMAHAWK® equipment through [www.tomahawk-power.com](http://www.tomahawk-power.com).

Follow the steps on page 3 or scan this QR codes to complete the equipment registration. After registration is complete, all warranty claims should firstly be directed to TOMAHAWK® through the online Service Request form found at [www.tomahawk-power.com/pages/service-request](http://www.tomahawk-power.com/pages/service-request).





# CHARGE AHEAD

## Battery-Powered Foggers

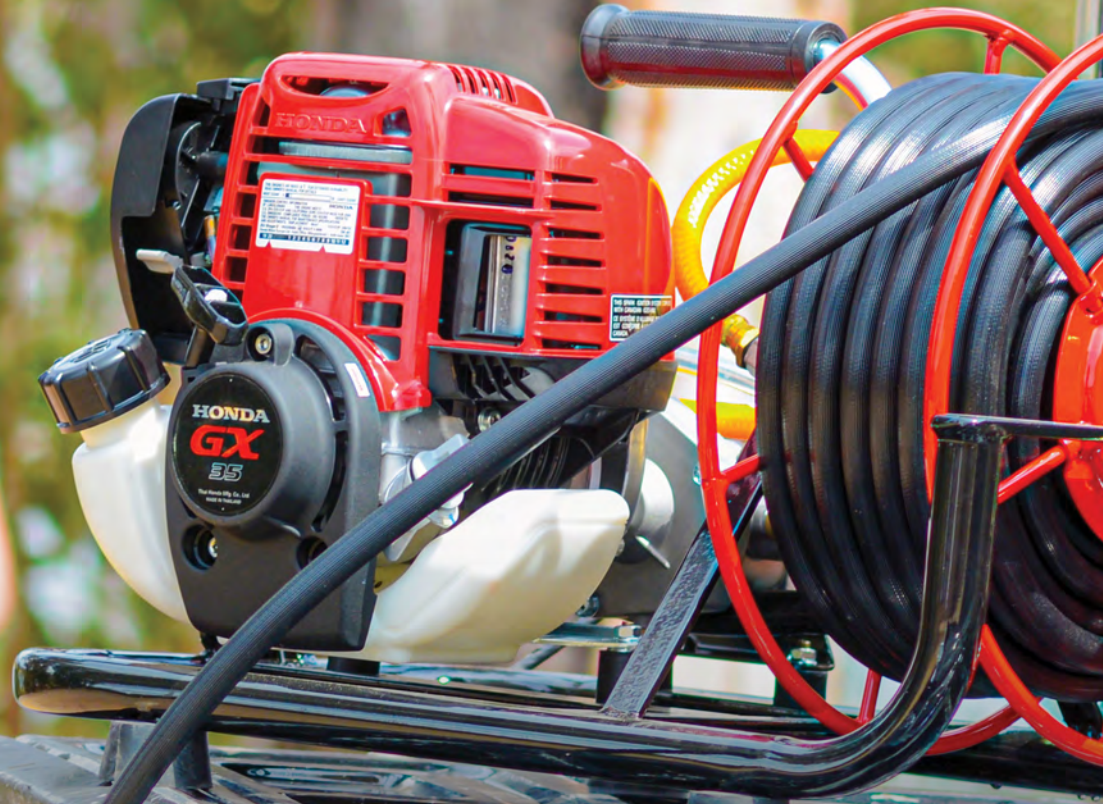
TOMAHAWK® Battery Powered Mosquito Foggers are your best solution for fighting annoying mosquitoes. Powered by a 36V/7.5Ah Lithium-Ion battery, spray 1 acre of land in less than 30 minutes to stop pests fast!

Item #: eTMD14

**4 GALLON BATTERY  
BACKPACK FOGGER**

[www.tomahawk-power.com](http://www.tomahawk-power.com)





# TRUSTED NATIONWIDE

Powered by the industry's most reliable Honda GX35 engine, maintain constant, adjustable pressure from 50 - 500 PSI with a high flow rate of 2.8GPM to help you cover more area so you can finish jobs faster!



Item #: TBS500

**1.6HP SKID SPRAYER  
+ 100FT HOSE & REEL**

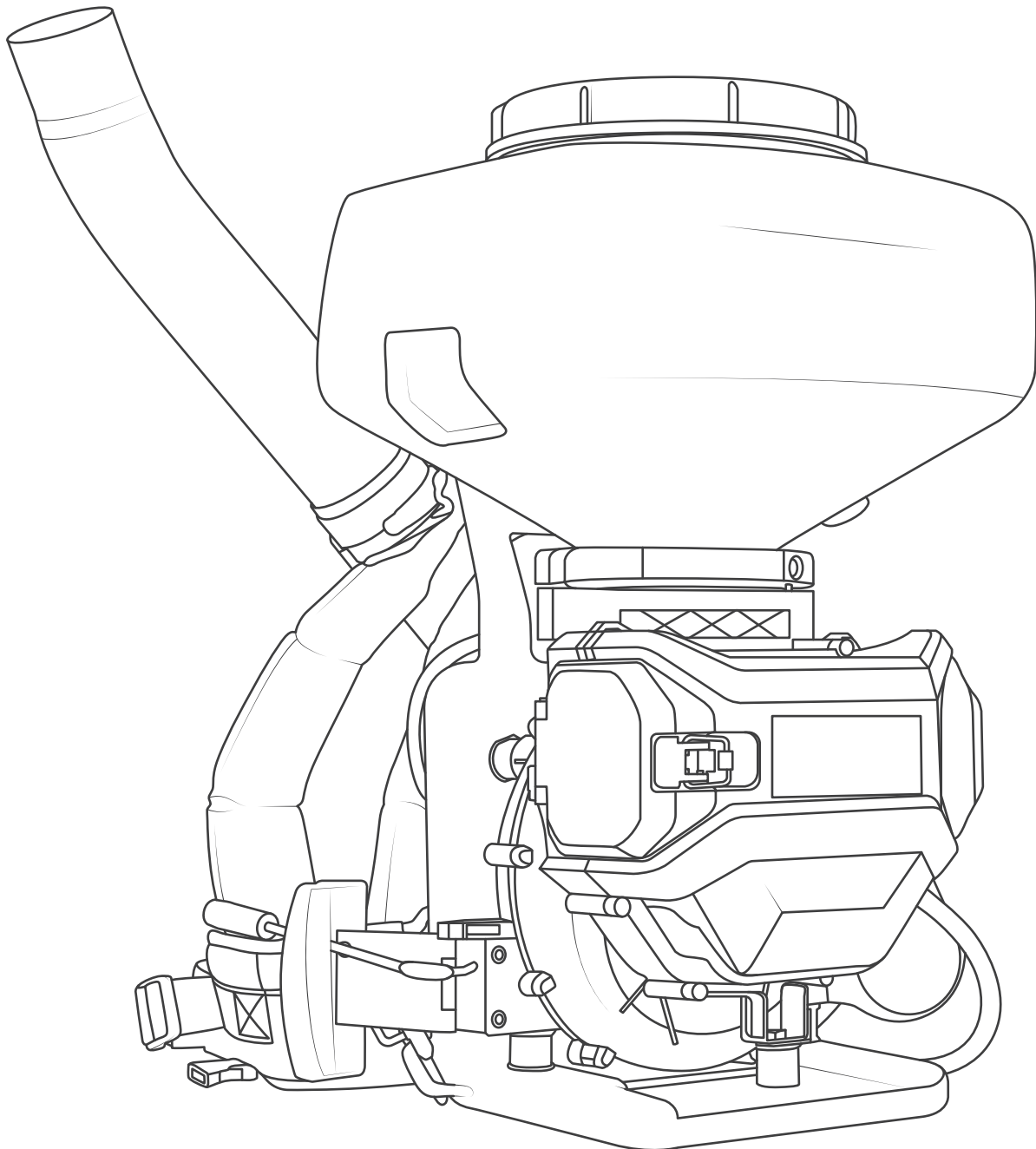
[www.tomahawk-power.com](http://www.tomahawk-power.com) 

# TOMAHAWK

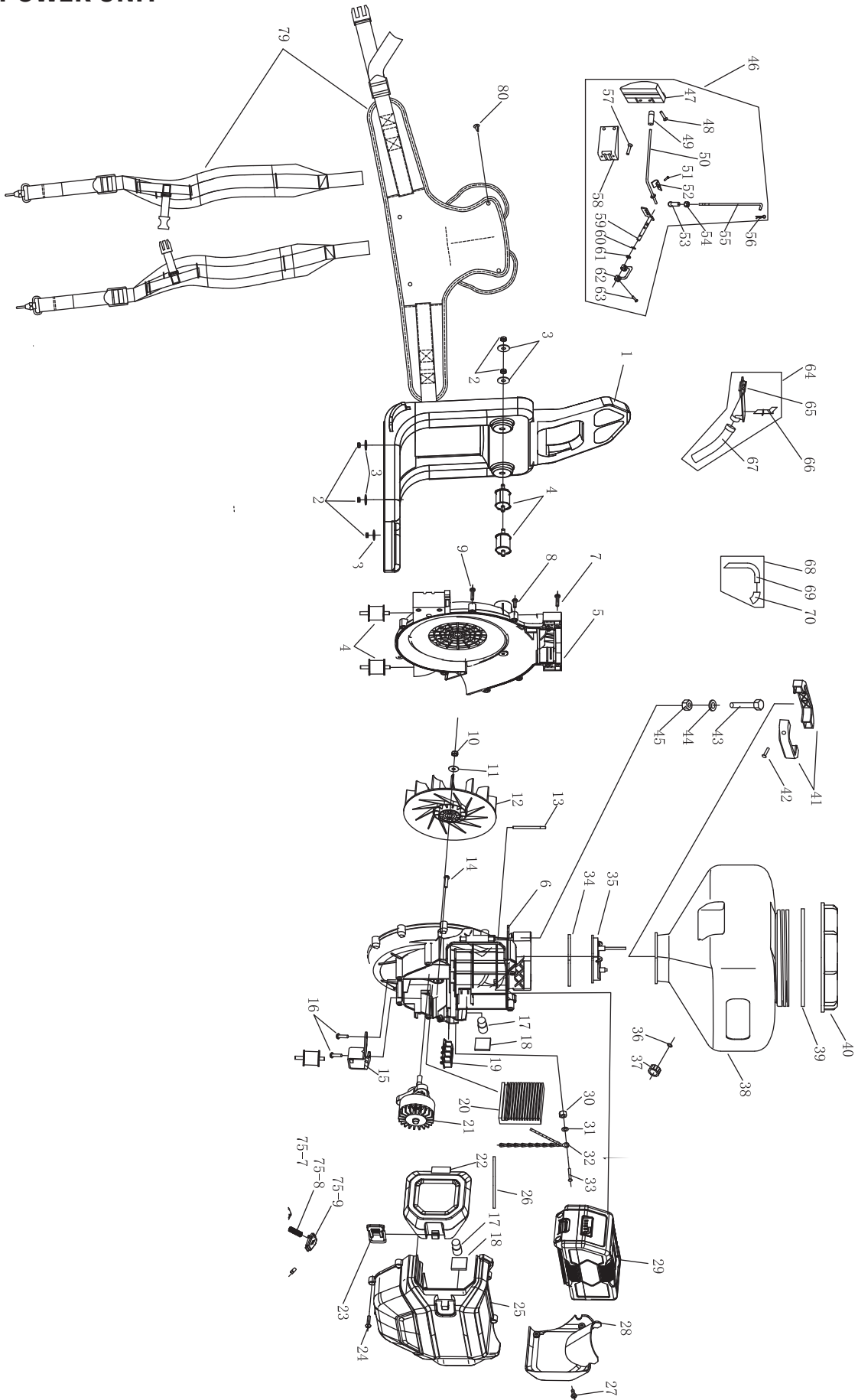
## BATTERY POWERED FERTILIZER SPREADER

MODEL NUMBER: eTGS30

Parts Manual



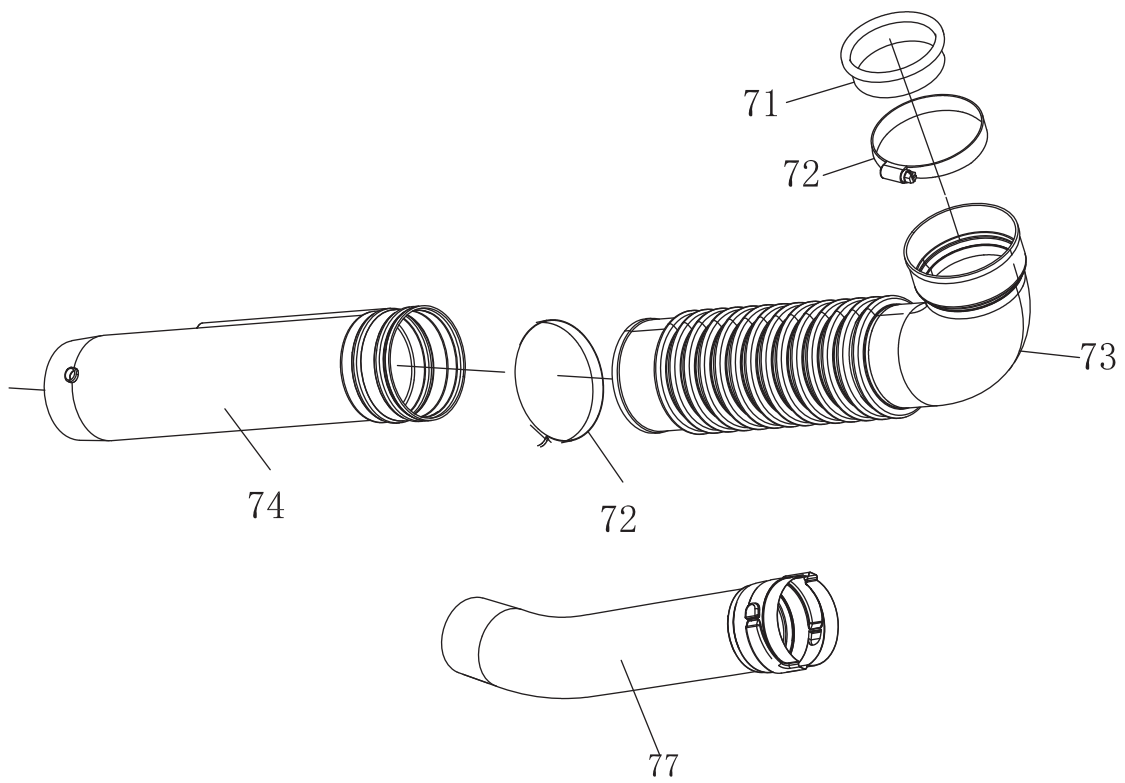
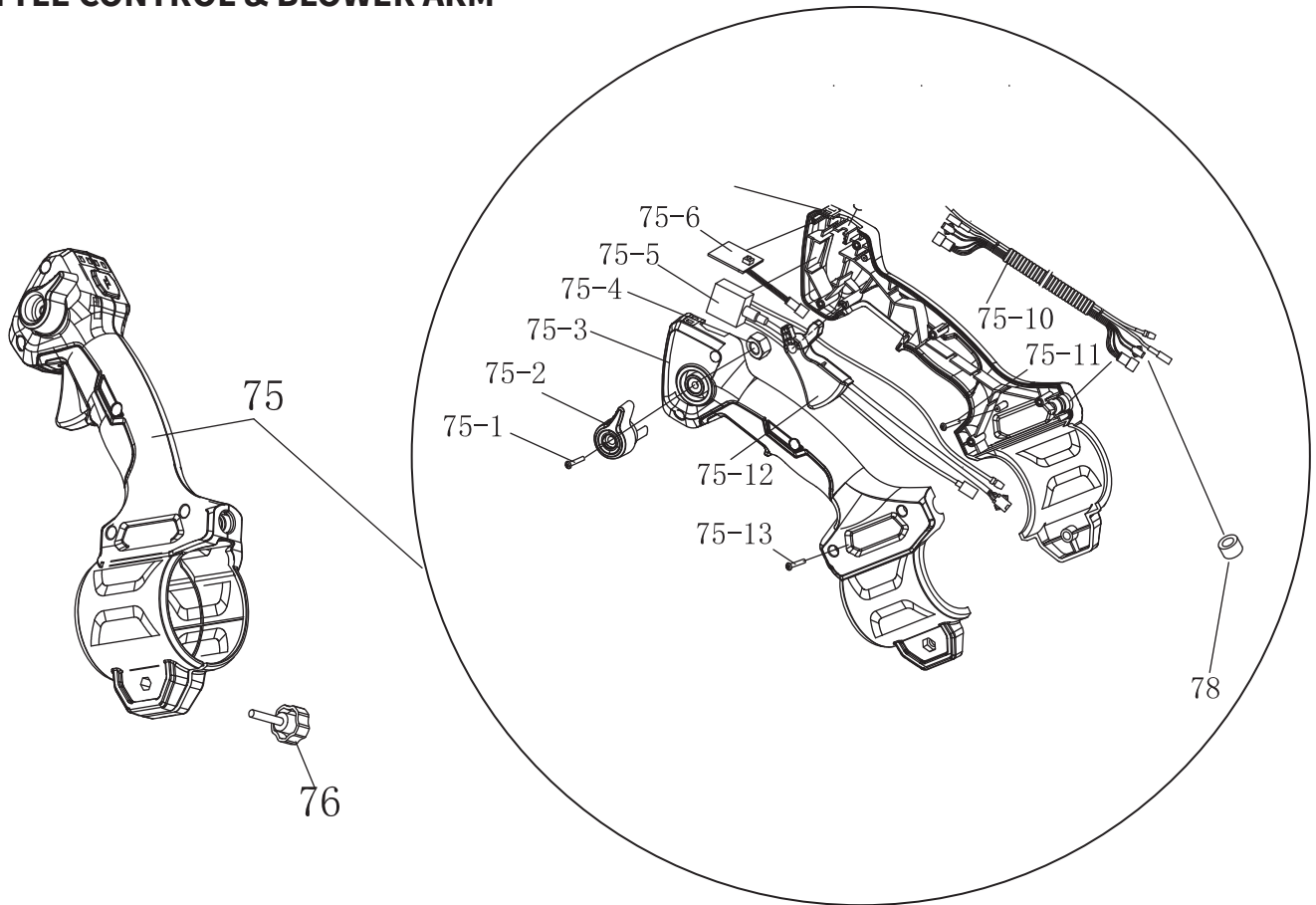
# FRAME & POWER UNIT



eTGS30 FRAME AND POWER UNIT		
No.	Part number	Qty.
1	3WF-8F.7A	1
2	GB/T6177.1 M6	5
3	GB/T96 6	5
4	3W-11.3	5
5	3WF-8.8.2	1
6	3FBD-7.2.1	1
7	GB/T9074.4 M5×30	4
8	GB/T845 ST4.8*13-F	1
9	GB/T845 ST4.8*19	7
10	GB/T889.1 M8	1
11	GB/T96	1
12	3FBD-7.2.2	1
13	3WBD-8.1.1-1	1
14	GB/T70.1+GB/T93+GB/T97 M5×16-10.9	3
15	3WF-2.6B.4	1
16	3WF-20.9-2 M5×16	2
17	ZB200-D80.5-4	2
18	ZB200-D80.5-3	2
19	3WBD-8.2.2	1
20	3WBD-8.2.5	1
21	3WBD-8.5	1
22	3WBD-8-2	1
23	3WBD-8.3	1
24	XSS46-2.2-5 M5×20	6
25	3WBD-8-1	1
26	3WBD-8.1.1-2	1
27	GB/T845 ST4.2×16	4
28	3WBD-8-3	1
29	ZB-200-D.2(36V/7.5Ah-5C)	1
30	GB/T6170 M5	1
31	GB/T3452.1 4×1.8	1
32	3WF-3.25.4	1
33	GB/T9074.4 M5×14	1
34	3WF-8.1-4	1
35	3WF-8.1.1A	1
36	3WF-3.17.2-2	1
37	3WF-3.17.2-1	1
38	3FBD-7.1-1	1
39	3WF-3.17.1-3	1
40	3WF-3.17.1-2	1
41	3WF-8-2	2
42	GB/T9074.4 M6×40	2
43	GB/T5780 M8×60	2
44	GB/T97	2
45	GB/T6170 M8	2
46	3FBD-7.3	1
47	3FBD-7.3-2	1

eTGS30 FRAME AND POWER UNIT		
No.	Part number	Qty.
48	GB9074.4 M5×16	2
49	3FBD-7.3-1	1
50	3WF-8.6.5	1
51	3WF-20.9-1 M5×10	1
52	3WF-8.6-2	1
53	3WF-3-15	1
54	GB/T6172.1 M5	1
55	3WF-2.6.7-7	1
56	3WF-2.6A-2	1
57	3WF-20.9-2 M5×16	3
58	3WF-8.6.4	1
59	3WF-8.6.3PA	1
60	GB/T896 φ8	1
61	GB/T3452.1 6.9×1.8	1
62	3F-30.3-2	1
63	GB/T845 ST4.2×16	2
64	3WF-8.3	1
65	3WF-8.3-1	1
66	3WF-8.3-2	1
67	3WF-8.3-3	1
68	3WF-8.2	1
69	3WF-8.2-1	1
70	3WF-8.2-2	1

# THROTTLE CONTROL & BLOWER ARM





<b>eTSG30 THROTTLE CONTROL &amp; BLOWER</b>		
<b>No.</b>	<b>Part number</b>	<b>Qty.</b>
71	3F-30.18-4	1
72	JB8870	2
73	3WF-8.11-1	1
74	EB-650.7.1	1
75	3WBD-8.2	1
76	EB-650.5.3	1
77	3W-16.8-2A	1
78	3FBD-7.6	1
79	3FBD-7.4	1
80	3WF-2.6B-2	4
75-1	GB9074.4 5×20	1
75-2	3WBD-8.2-2	1
75-3	3WBD-8.2-5	1
75-4	GB889 M5	1
75-5	3WBD-8.2.4	1
75-6	3WBD-8.2.1	1
75-7	3WBD-8.2-4	1
75-8	BL750.3-7	1
75-9	3WBD-8.2-3	1
75-10	3WBD-8.2.3	1
75-11	PWA M3×10	2
75-12	3WBD-8.2-1	1
75-13	3GC36D.2-4	5

PEST CONTROL



**4 Gal Mosquito Fogger/ Blower**

**Part#: TMD14** 2-in-One Spreader / Blower  
Gas-Powered, 3HP, 2-Stroke, 40ft Reach  
490 CFM/220 MPH, 25-100 Microns  
4 Gallon Tank, Spray 1 Acre in 30 Minutes



**4 Gal Mosquito Fogger/ Blower**

**Part#: eTMD14** 2-in-One Spreader / Blower  
Battery-Powered, 36V/7.5ah, 25ft Reach  
310 CFM/150 MPH, 25-100 Microns  
4 Gallon Tank, Spray 1 Acre in 30 Minutes



**5 Gal Motorized Backpack Sprayer**

**Part#: TPS25** 50-450 Adjustable PSI  
30ft Reach, Gas-Powered, 1.8HP, 2-Stroke  
Cover 1 Acre of Land in 15 Minutes  
Flow Rate: 1-2.5 GPM, 5 Gallon Tank

LANDSCAPING



**5 Gal Backpack Battery Sprayer**

**Part#: eTPS18** 5-70 Adjustable PSI  
25ft Reach, Battery-Powered, 12V/7ah  
Cover 1 Acre of Land in 15 Minutes  
Run Time @ 45 PSI: > 11 Hours (400cc/min)



**4 Gal Fertilizer Spreader**

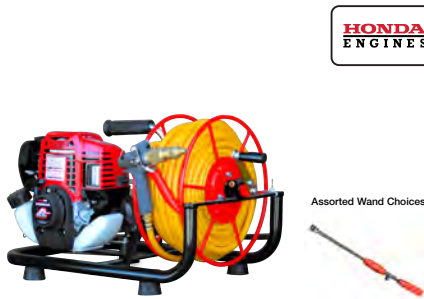
**Part#: TGS30** 2-in-One Spreader / Blower  
Gas-Powered, 3HP, 2-Stroke, 30ft Reach  
4 Gallon Tank, Cover 1 Acre in 30 Minutes  
Lawn, Seed Feed, Ice Melt



**5 Gal Battery Fertilizer Spreader**

**Part#: eTGS30** 2-in-One Spreader / Blower  
Battery-Powered, 36V/7.5ah, 25ft Reach  
5 Gallon Tank, Cover 1 Acre in 30 Minutes  
Lawn, Seed Feed, Ice Melt

LANDSCAPING



**500 PSI Skid Sprayer**

**Part#: TBS500** GX35, 50-500 Adjustable PSI  
30ft Reach, Honda Gas-Powered, 1.8HP  
4-Stroke, Cover 1 Acre in 15 Minutes  
Includes 100ft Hose and Nozzle



**Trash Water Pumps**

**Part#:**  
**TW3H** 3" Pump, Honda GX270, 375 GPM  
Elevation: 89ft, Suction: 25ft  
**TW4H** 4" Pump, Honda GX390, 581 GPM  
Elevation: 92ft, Suction: 26ft



**Power Buggy**

**Part#: TBUGGY300e** 48V-20Ah Battery  
Handles up to 8 cu ft or 660 lbs. Bucket Capacity  
Hydraulic Bucket with 92° Tilt, 8 Hour Run Time  
Snow Plow Attachment & Bucket Extender Available

HAVE QUESTIONS?

Contact us. *We're here to help!*

(866) 577-4476

Email us at [sales@tomahawk-power.com](mailto:sales@tomahawk-power.com)

### GENERATORS

QUIET INVERTER SERIES



58 db

2,000 - 3,300 Watt Series

<b>TG2000i</b>	2,200w Max / 2,000w Rated
<b>TG3000i</b>	3,300w Max / 3,000w Rated, 120/220V, 30 AMP Twist Lock Run Time 8 Hrs @ 50% Load CARB Compliant, GFCI 120v

QUIET INVERTER SERIES



EFI  
OPTION AVAILABLE

62 db

4,500 - 5,500 Watt Series

<b>TG4500i</b>	4,500w Max / 3,800w Rated
<b>TG5500i</b>	5,500w Max / 5,000w Rated, 120/220V Run Time 8 Hrs @ 50% Load CARB Compliant, GFCI

QUIET INVERTER SERIES



62 db

10,500 Watt Series

<b>TG9000i</b>	10,500w Max / 8,500w Rated Voltage Selector, 120/220V Run Time 14.5hrs @ 25% Load CARB Compliant, GFCI, CO Detector
----------------	--

### CONCRETE

HONDA  
ENGINES



Power Screeds

<b>Part#:</b>	* Battery Powered Option Available
<b>TVSA-H</b>	Honda, Gas-Powered, 6-16 ft Magnesium Blades
<b>eTVSA</b>	Battery-Powered, 6-16 ft Magnesium Blades
<b>TVSA-T</b>	Gas-Powered, 6-14 ft Aluminum Blades

HONDA  
ENGINES



FAST  
PITCH  
WAGMAN

Walk Behind Trowels

<b>Part#:</b>	Items Listed Includes Combo Blades
<b>TPT24H</b>	2 ft Edger, Honda GX160, 0-28° Blade Pitch
<b>TPT36H</b>	3 ft, Honda GX160/GX270, 0-28° Blade Pitch
<b>TPT46H</b>	4 ft, Honda GX270/GX390, 0-28° Blade Pitch

HONDA  
ENGINES



Early Entry Saws

<b>Part#:</b>	
<b>TFS6H</b>	6" Blade Diameter, Blade Compatibility, Honda GX120
<b>TFS10H</b>	10" Blade Diameter, Self Propelled, Blade Compatibility, Honda GX270/GX390

### & MORE

HONDA  
ENGINES



HONDA  
EGX

Wheel Kit Available



Rammers

<b>Part#:</b>	* Battery Powered Option Available
<b>TR68H</b>	3,550 lbs/sq ft, Honda GX120
<b>JX60H</b>	3,350 lbs/sq ft, Honda GX100
<b>eJX60H</b>	3,350 lbs/sq ft, Honda GXE2.0S

Assorted Brush Choices



Floor Sweepers

<b>Part#:</b>	* Battery Powered Option Available
<b>TOS38</b>	38" Working Width, Triple Broom System, 14.5 Gallon
<b>eTOS30</b>	30" Working Width, Battery Powered Triple Broom System, 13.5 Gallon



Welder Generators

<b>Part#:</b>	6010-7024 Rods Compatible
<b>TWG120A</b>	120 Amp Welder, 60% Duty Cycle, 2000w, Includes Wheel Kit
<b>TWG210A</b>	210 Amp Welder, 60% Duty Cycle, 2000w, Includes Wheel Kit



## Power Your World

Tomahawk understands to keep a job-site running smoothly the proper equipment and spare parts are needed at the drop of a hat. With same day shipping and faster delivery times, count on Tomahawk to keep you powered throughout the day! With long lasting parts and engines, Tomahawk equipment will be the star of your fleet for years to come. Visit [www.tomahawk-power.com](http://www.tomahawk-power.com) to get started today!

# TOMAHAWK

TOMAHAWK®, LLC  
San Diego, CA

### Sales Support

(866) 577-4476

[sales@tomahawk-power.com](mailto:sales@tomahawk-power.com)

### Equipment Support

(866) 577-4476

[support@tomahawk-power.com](mailto:support@tomahawk-power.com)

[www.tomahawk-power.com](http://www.tomahawk-power.com)



### FACEBOOK

[facebook.com/TomahawkPowerUSA](https://facebook.com/TomahawkPowerUSA)

### YOUTUBE

[youtube.com/TomahawkPower](https://youtube.com/TomahawkPower)

### INSTAGRAM

[@tomahawkpower](https://instagram.com/tomahawkpower)