

Installation and Operation Instructions

LED Flexible Strobe Lights

Kit Includes the Following:

- Lighthead with 9.38in cord
- 2X M3.0x12mm long self-tapping screws
- 2X 3.5mm screw washer
- 2X snap caps
- Double-sided adhesive mounting pad with alcohol pre pad
- Curvature template
- Instructions

Part Number	LED Qty. and Colors	Screw Holes Spacing (in)	Avg. Current @ 12VDC	Avg. Current @ 24VDC
8890700	6 (6 Amber)	4.62	.32	.16
8890702	12 (6 Amber/6 Clear)	4.62	.32	.16
8890708	12 (6 Blue/6 Amber)	4.62	.32	.16
8890709	12 (6 Green/6 Amber)	4.62	.32	.16

- Max. Current: .64A
- Max. Power: 7.68W

WIRING CODE

Order of Precedence: Mode3 > Mode2 > Mode1

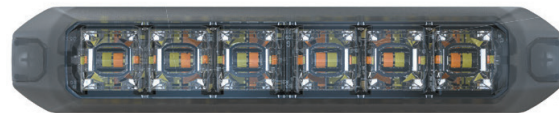
BLACK: To Chassis Ground (-)
RED: +VDC for Warning Mode 1 (fuse @ 1A)
- Single Color: Default FP#2
- Dual Color: Default Color Mode – Color 1, FP#1
WHITE: +VDC for Warning Mode 2 (fuse @ 1A)
- Single Color: Default FP#1
- Dual Color: Default Color Mode – Color 2, FP#1
RED & WHITE*: +VDC for Warning Mode 3 (fuse @ 1A)
*Only present on Single-Color models
- Default FP#18
GREEN*: +VDC for Warning Mode 3 (fuse @ 1A)
*Only present on Dual-Color models
- Default Color Mode – Color 1 alt. 2, FP#1
YELLOW: Flash Patterns & Synchronization
- Connect YELLOW wires of all light heads together for synchronization (All heads must be set to the same pattern)
- Can synchronize up to 20 lights

WARNING

Do not look directly into LEDs while in operation; this may cause momentary blindness and/or eye damage.

WARRANTY

Buyers Products Co. warrants all truck/trailer hardware manufactured or distributed by it, to be free from defects in material and workmanship for a period of one year from date of shipment. Parts must be properly installed and used under normal conditions. Any product which has been altered, including modification, misuse, accident or lack of maintenance will not be considered under warranty. Normal wear is excluded. The sole responsibility of Buyers Products Co. under this warranty is limited to repairing or replacing any part or parts which are returned, prepaid, and are found to be defective by Buyers Products Co. Authorization from Buyers Products Co. must be obtained before returning any part. No charges for transportation or labor performed on Buyers' products will be allowed under this warranty.



OPERATION MODE

Flash Patterns:

While activating a warning mode, momentarily apply +VDC to **YELLOW** wire or change pattern switch:

- Once for next pattern.
- Quick three times to reset to FP#1.

FP#	Flash Patterns
1	DOUBLE [2Hz]
2	SINGLE [2Hz]
3	TRIPLE [2Hz]
4	QUAD [2Hz]
5	RANDOM
6	STEADY EF*
7	SINGLE [SAE][CA13]
8	DOUBLE [SAE]
9	TRIPLE [SAE]
10	QUAD [SAE]
11	QUINT [SAE]
12	MEGA
13	GIGA
14	ULTRA [SAE]
15	SINGLE-QUAD
16	SINGLE H/L

FP#	Flash Patterns
17	SINGLE-TRIPLE-QUINT
18	STEADY SCENE
19	CRUISE
20	SWEEP SINGLE TA
21	OFF
22	SINGLE-SINGLE
23	DOUBLE-DOUBLE
24	TRIPLE-TRIPLE MID
25	TRIPLE-TRIPLE FAST
26	QUINT-TRIPLE
27	7-1 FLASH
28	7-1 FLASH#
29	QUAD-SINGLE
30	QUAD-SINGLE#
31	QUINT-QUINT

- FP#22-31 will always operate in dual color.
- * = For use with external flash controller
- # = Inverted color mode

Shortcut Setting for Steady EF (External Flasher):

"Steady EF" Flash Pattern shortcut for independent color control via an external flasher. Momentarily apply +VDC to **YELLOW** wire for 3 to 4 seconds (Visual feedback ON->OFF->ON) while activating a warning mode. Each warning mode will simultaneously be set to the following:

- Warning Mode 1 = FP#6 Steady EF
- Warning Mode 2 = FP#6 Steady EF
- Warning Mode 3 = FP#21 Off

SETTING MODE

1. SETTING MODE lets you change Synchronization & Color Mode Settings for each Warning Mode, as well as reset all modes to Factory Default Settings at the same time. Apply +VDC to **Warning Mode Wire (RED or WHITE or RED+WHITE or GREEN)** and **YELLOW** wires simultaneously, then remove **YELLOW** wire to enter SETTING MODE for the following settings.

2. Save and exit SETTING MODE by disconnecting the power.

For Simultaneous or Alternating Synchronization:

- Each Warning Mode may be assigned to one group. Momentarily apply +VDC to **YELLOW** wire for more than 3 seconds.
 - Lights of the same Group will flash together.
 - Lights of Groups 1 & 5 will flash alternately.
 - Lights of Groups 2, 3, 4, 6, 7, & 8 can only be set by PROCONNECT Programmer only.
- Save and exit SETTING MODE by disconnecting the power.

Display for Light	Group #
Single Flash	1
Double Flash	5
Three Flash	2
Four Flash	3
Five Flash	4
Six Flash	6
Seven Flash	7
Eight Flash	8

For Color Mode Setting:

- Each Warning Mode may select and save one Color Mode. Momentarily apply **YELLOW** wire to +VDC for less than 3 seconds to change color and order.
 - Please refer to the Color Order table for which color mode is active and in what order they will cycle.
- Save and exit SETTING MODE by disconnecting the power.

#	Color Order
1	
2	
3	→
4	→



Single Flash



Low Power Steady

Reset to Factory Default Settings:

- Apply **YELLOW** wire to +VDC for more than 5 seconds. The lighthead will display fast short flashes to signify successful reset.
- Save and exit SETTING MODE by disconnecting the power.

INSTALLATION

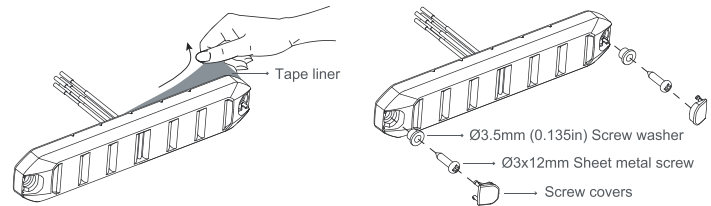
Curved Surface/Flat Surface

- Curved Surface** Use curvature template to check surface mountability: make sure surface curvature is over 120 degree.

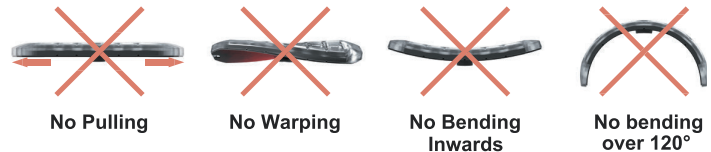


- Mark and drill a wire passage hole on the mounting surface. Make sure no vehicle parts could be damaged by the drilling process. (Thoroughly deburr hole and use grommet for wire passage hole if needed)
- Clean and dry the mounting surface with alcohol prep pad provided, (or 50:50 mix of isopropyl alcohol and water)
- Remove the tape liner from the tape and apply the lighthead to the surface and press it firmly for 30 seconds. Full adhesion and bonding will be achieved after 72 hours at room temperature.

- Flat Surface** For best secure installation, it is recommended to always mount lighthead with screws. **Curved Surface** Due to lighthead tension, it is **required** to always mount lighthead with screws on curved surface.
- Once secured, apply screw covers onto the lighthead for best aesthetic, (use silicon glue to better secure the screw cover)



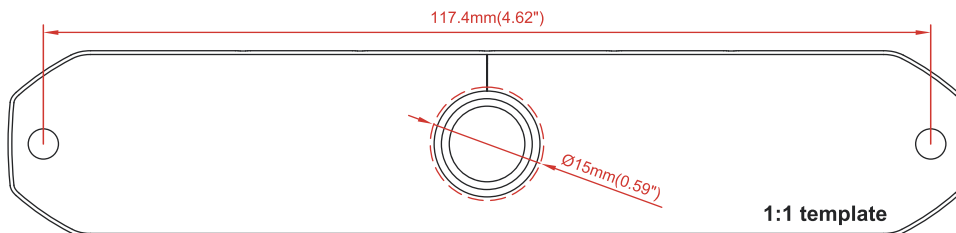
Prohibited Mounting:



This product can be configured ideally by using PROConnect™ Programmer with desired Flash Pattern, Group (Phase), and Color Mode to save your installation time!

Mounting Template

1:1 template



Curvature Template

1:1 template

