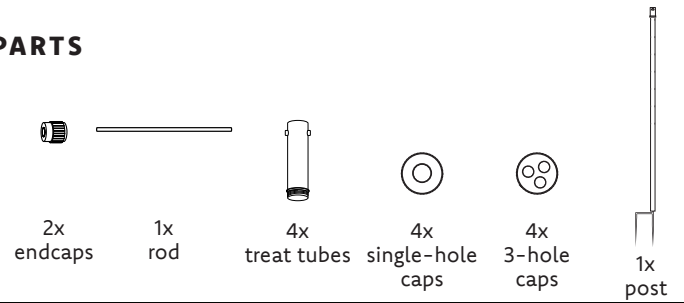




Rent A Coop®

TREAT DISPENSER (large)

PARTS

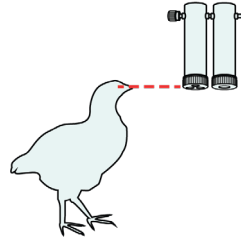


USER GUIDE

PLACEMENT RECOMMENDATION

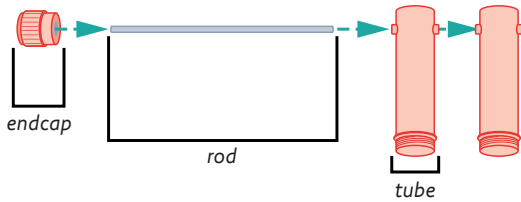
THIS PRODUCT IS SUITABLE FOR CHICKENS OF ALL AGES AS IT IS HEIGHT-ADJUSTABLE.

THE BOTTOM OF THE TUBE WHEN HANGING SHOULD BE EYE-LEVEL WITH THE SMALLEST CHICKEN IN YOUR FLOCK.

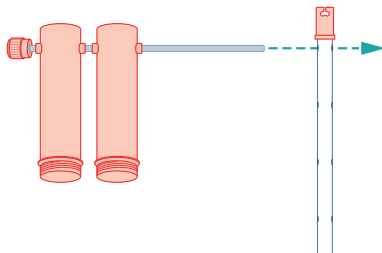


HOW TO INSTALL

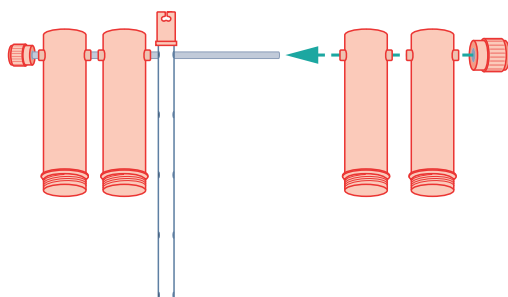
- 1 Screw one endcap to the rod and push the opposite end of the rod through two empty treat tubes.



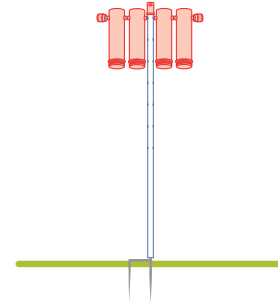
- 2 Continue to push the rod through the holes in the post at a height level that is most appropriate for your chickens. SEE PLACEMENT RECOMMENDATION.



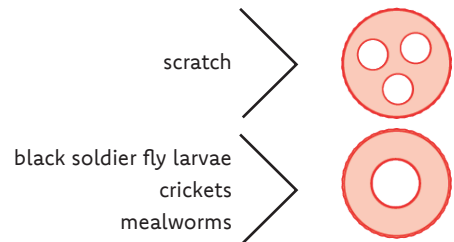
- 3 String the remaining two treat tubes onto the rod and screw on the remaining endcap.



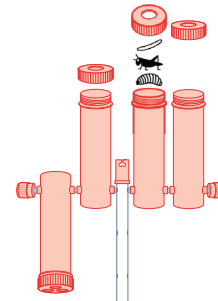
- 4 Push the post's stakes all the way into the ground.



- 5 Determine which dispenser cap to use based on the type of treat[s].



- 6 Fill the tubes with treats and screw on the appropriate dispenser caps.



- 7 Round up your chickens!

One treat-filled tube clears in approximately 15 minutes.

