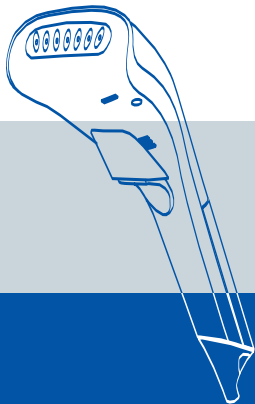


SALAV



USER MANUAL

Please read all instructions
carefully before using
this product.

QUICKSTEAM HAND HELD STEAMER

Model: HS-04/T



www.salavusa.com

Dear Valued Customer

Thank you for purchasing this SALAV product. Please read this manual prior to using your SALAV appliance. For more product information, FAQ and customer support please visit our website at www.salavusa.com.

Important Safety Instruction :

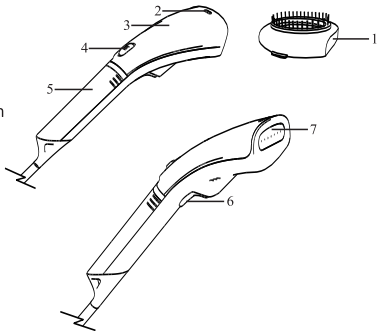
1. The voltage of your electrical source must correspond to that of the appliance(120V/60Hz). Connecting to the incorrect voltage may cause unrepairable damage to the appliance and will invalidate the warranty.
2. Do not share the power supply with other high-powered electric appliances.
3. To reduce the risk of electric shock, do not immerse the appliance, plug, or power cord in water or other liquids.
4. Do not leave this appliance unattended while it is in operation.
5. Fill water before using and observe the water level during use.
6. Do not operate the appliance if cord is damaged.
7. Do not allow power cord to touch hot surfaces. Let the appliance cool completely before putting the unit away. Loop cord loosely around the appliance for storage.
8. Never insert any object into any steam opening.
9. Do not place the nozzle directly on any surface or the appliance power cord while it is hot or plugged in.
10. Steam only in a vertical motion. Never use steamer in a horizontal position or tilt backwards - doing so may result in hot water discharge.

11. Always turn off and unplug unit before refilling, draining, cleaning, moving, or when not in use.
12. Never yank the power cord to disconnect from power outlet. Always grasp the plug and pull to disconnect.
13. Use appliance only for its intended use. For indoor use only.
14. Keep the appliance away from flammable materials and chemicals.
15. Do not fill the water tank with hot water or corrosive cleaning agents which could cause damage. Distilled or filtered water is strongly recommended.
16. To reduce the risk of contact with hot steam emitting from steam nozzle, check appliance before each use by holding it away from body and operating steam button.
17. When in use, this appliance will spray hot steam from its steam nozzle. To avoid injury from hot steam, do not aim the steam nozzle at people or pets.
18. Only use SALAV accessories on your SALAV appliance. The use accessory attachments other than those provided by SALAV may result in fire, electric or irreversible damage to the appliance.
19. This appliance is not intended for use by children or near children and other persons whose physical, sensory or mental capabilities or lack of experience and knowledge prevents them from using the appliance safely without supervision or instruction or instruction by a responsible person to ensure that can use the appliance safely.

Save the instructions for future reference.

COMPONENT

1. Detachable Fabric Brush
2. Power Indicator Light
3. Main Body
4. Dual Steam Setting On/Off Switch
5. Removable Water Tank
6. Ergonomic Cool Touch Handle
7. Steam Nozzle



PRODUCT SPECIFICATION

Input Voltage 120V/60Hz

Output Power 1000w

Water Tank Capacity 80ml

ADDING WATER TO THE STEAMER

1. Please make sure the appliance is not plugged in. Please pull out the plug before adding water and cleaning the steamer.
2. Hold both sides of the water tank and slide downward. Take the water tank out of the main body and flip it over. Fill the water tank with water. (See Fig. 1, 2, 3)
3. Place the water tank back onto the handheld steamer. (See Fig. 4 & 5)

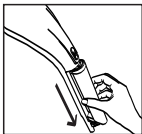


Fig 1



Fig 2

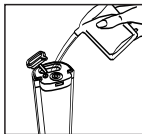


Fig 3



Fig 4

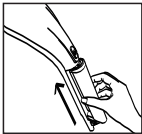


Fig 5

STEAMING INSTRUCTIONS

1. Add water into the tank before using the appliance.
2. Please use the correct voltage 120V/60Hz.
3. Plug in and turn on the appliance. Once the indicator light is on, steam will start in 35 seconds and is ready for use.
4. The appliance has dual settings.
5. Do not use the appliance horizontally or upside-down. (See fig. 6)



Fig 6

6. For best results, hold clothes taut and steam lightly in a vertical motion.

Removing wrinkles on Collars

Hold the collar with one hand, hold the handheld garment steamer with another to steam. (See fig. 7)

Removing wrinkles on back collars

Hold the collar with one hand, hold the handheld garment steamer with another to steam. (See fig. 8)

Removing wrinkles at front shirt

Move the handheld garment steamer vertically. (See fig. 9)

Removing wrinkles on pockets

Hold the shirt with one hand, move the steamer vertically. (See fig. 10)

Removing the wrinkles on the back

Move the steamer vertically. (See fig. 11)

Removing the wrinkles on the sleeves

Grab the sleeve with one hand, move the steamer across the sleeve. (See fig. 12)

NOTE: Please wear a heat resistant mittens or oven gloves on the hand holding the clothes during steaming to protect from hot steam.

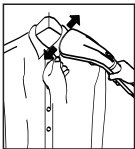


Fig 7

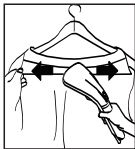


Fig 8

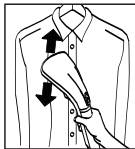


Fig 9

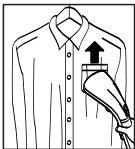


Fig 10



Fig 11

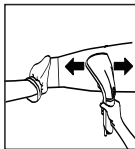


Fig 12

7. When the water tank runs out of water, turn off and unplug the appliance. Take out the water tank and refill it. Then turn on the steamer to continue steaming.

Caution:

1. The high temperature steam from the steamer can reach 356° F. Do not leave the nozzle steaming on one spot for a long time to avoid damage to the garment.
2. When steamer is not in use, continue to let the steam run until the water tank runs out of water and no steam is coming out from the nozzle. Then turn off and unplug the steamer. (If the steamer is turned off while the nozzle still sprays steam, it may cause injury since there is still water left in the heater)
3. Before putting the steamer away for storage, continue to steam until no steam is spraying out of the nozzle. Be sure the steamer is completely cooled down. (Approximately 30 mins)

CLEANING AND MAINTENANCE

1. The appliance needs no cost to maintain and no detergent to clean. If the appliance shows visible damage or if the power cord is damaged, please return it to the service station for maintenance. Do not try to disassemble or repair by yourself.
2. Please pull out the plug and wait until the appliance is completely cooled down before cleaning it.
3. Continue to let the steam out until the water tank is empty.
4. Do not place the appliance in water. Use dry cloth to dry the steamer. No special detergent is needed for cleaning.
5. Make sure the appliance is dry before storing or packaging.

TROUBLE SHOOTING

Problem	Reason	Solution
Unit fails to steam, indicating light do not illuminate	The appliance is not plugged in.	Connect the plug to the power supply.
	The household power fuse is off or fused.	Check the power supply or ask qualified electricians for help.
Unit falls to steam, indicating light illuminates	The water in the tank has been used up.	Add water.
	Temperature controller works .	Add water to cool temperature controller down before it works again.
Water drops on steam nozzle	Internal condensation is produced.	Continue to use the steamer to evaporate the internal condensation water until water drops stop appearing.
Water sprays from the steam panel	The water exceeds the tank's maximum water level.	Pay attention to the amount when adding water.
	Wrong ironing operations.	Use it according to the operation instructions.

Visit our website to find product tips, customer support and learn about
SALAV patented steam technology.
www.salavusa.com