

LS-FLOAT SWITCH SPECIFICATIONS

Level Sense Float Switch connects to a control device accepting an analog or digital input. This float is perfect for Arduino, Raspberry Pi, and home electronic projects.

Technical Information

- Housing: Polypropylene, white
- Working Voltage: 5Vdc-12Vdc
- Max. Voltage: 24Vdc
- Max Wattage: 10W
- Max. Working Current: 0.5 Amp, 1.0 Amp Max
- Contact Resistance 0.2Ω
- Temperature: -4°F +176°F / (-20°C +80°C)
- 15 Feet of Cable
- Red wire to Positive, white wire to Negative (ground)

Installation

1. The float sensor mounts above the normal pump water line and detects when the water level has reached a point above normal operating range.
2. The float sensor is installed on the sump pump discharge pipe. Using the provided plastic float bracket and two zip ties, securely mount the float to the discharge pipe (Fig. 1).
3. The sliding float portion of the sensor should face down. Mount the float bracket approximately six (6) inches above the sump pump normal water line.
4. This level can usually be found by looking at the side walls of the pit to visually see the high-water mark roughly level with the top of the pump.
5. Loosen the float switch lock nut, and place float switch on mounting portion of the bracket. Tighten the lock nut onto the bracket by hand (Fig. 2).
6. Next to wire the float switch, you will take the red wire to positive, and the white wire of the float switch to the negative terminal (ground).

For help or assistance, call our support line at 314-787-8059 ext 2.

LS-FLOAT SWITCH SPECIFICATIONS

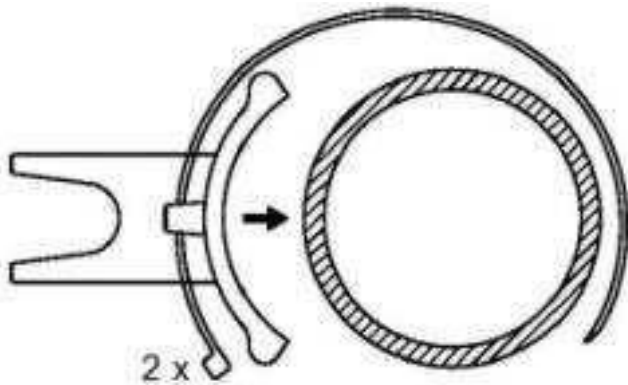


Figure 1: Float switch bracket installation with zip ties.

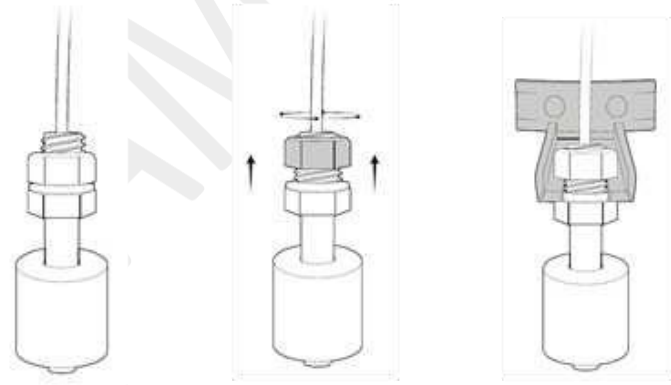


Figure 2: Float Switch lock nut tightened onto bracket.

LIMITED 2-YEAR WARRANTY

Sump Alarm, Inc. warrants to the original consumer that this product shall be free of manufacturing defects for two years after the date of consumer purchase. During that time period and subject to the conditions set forth below, Sump Alarm, Inc. will repair or replace, for the original consumer, any component which proves to be defective due to the materials or workmanship of Sump Alarm, Inc. This warranty does not apply: (a) to damage due to lightning or conditions beyond the control of Sump Alarm, Inc. (b) to defects or malfunctions resulting from failure to properly install, operate, or maintain the unit according with the instructions provided; (c) to failures resulting from the abuse, misuse, accident or negligence; (d) to units which are not installed in accordance with applicable local codes, ordinances or accepted trade practices, and (e) to units repaired and/or modified without the authorization of Sump Alarm, Inc. To obtain warranty service: The consumer shall assume all responsibility and expense for removal, reinstallation and freight. ANY IMPLIED WARRANTIES OF MERCHANTABILITY OR FITNESS ARE LIMITED TO THE DURATION OF THIS WRITTEN WARRANTY. SUMP ALARM, INC. SHALL NOT, IN ANY MANNER, BE LIABLE FOR ANY INCIDENTAL OR CONSEQUENTIAL DAMAGES AS A RESULT OF A BREACH OF THIS WRITTEN WARRANTY OR ANY IMPLIED WARRANTY.

For help or assistance, call our support line at 314-787-8059 ext 2.