

Installation Instructions

1801215 2" Receiver Hitch

Applications

2011+ Ford F450/550 Cab and
 Chassis w/34 inch wide Frame w/Reading Service Body

Capacity

20,000 lbs. Maximum Gross Trailer Weight (MGTW)
 2,000 lbs. Maximum Vertical Load (MVL)

WARNING

To avoid serious injury or death, check that all hitch fasteners are secure and properly torqued before use.

1. Place the hitch so the large holes in the brackets are over the flat rivet heads on the frame.
2. Clamp the hitch on to the frame temporarily ensuring that it is centered and flat.

3. Using the hitch brackets as a template, mark all the holes. Spray paint works well for this.
4. After marking, unclamp the hitch from the frame and set aside.
5. As shown above, drill the marked 9/16" holes toward the rear of the truck on both sides.
6. As shown above, drill the marked 1/2" holes closest to the cab on both sides.
7. Place the hitch back onto the frame and align it to the newly drilled holes. Secure it to the frame with the provided 1/2" and 9/16" hardware as shown.
8. Install the bumper brackets.
9. Using the hitch brackets as a template, drill two additional 1/2" holes through the bumper brackets on both sides.
10. Attach the Bumper Brackets to the Hitch with the provided 1/2" hardware as shown. This is required to achieve the rating.
11. Torque all 1/2" fasteners with 75 ft-lb and 9/16 fasteners with 110 ft-lb.

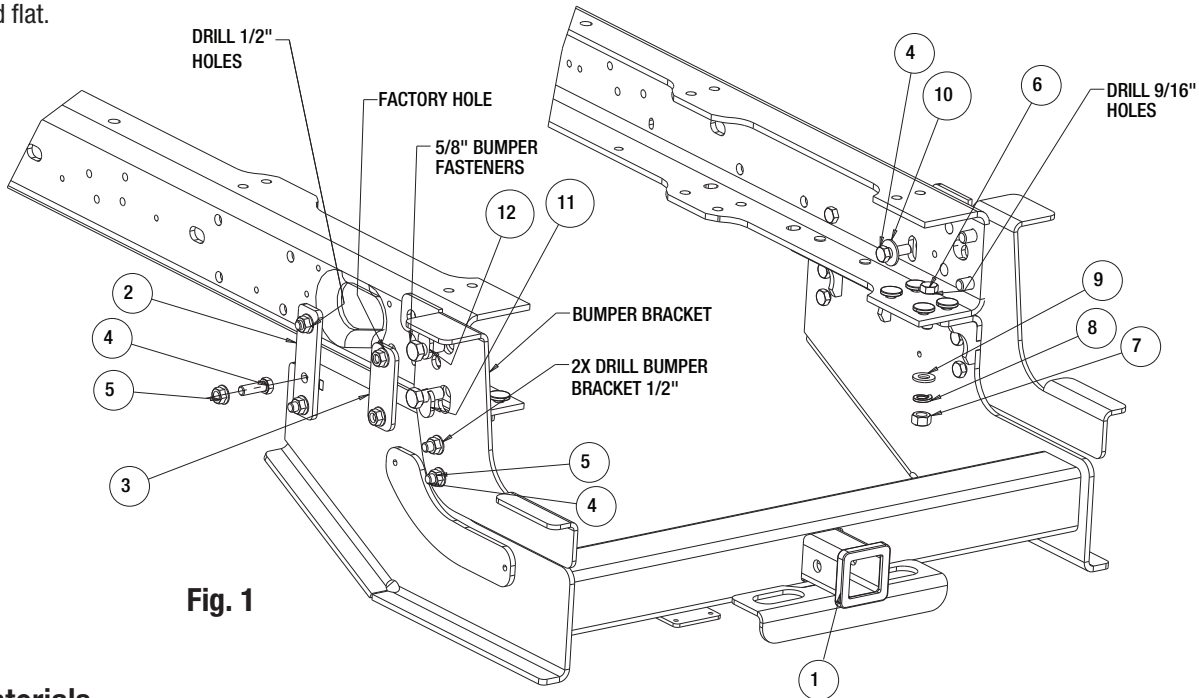


Fig. 1

Bill of Materials

ITEM	PART NO.	QTY.	DESCRIPTION
1	3035653	1	HITCH, WELD, 2" RCVR, F450-2011 +
2	3035654	2	SPACER, HANGER
3	3035655	2	BRACKET, SIDE ATTACH
4	3006202	14	SCREW, HEX HD - 1/2-13 X 1-1/2 GR 8 ZC
5	3029359	14	NUT, HX FLNG-1/2-13 ZN G8
6	3002476	2	SCREW, HEX HD CAP 9/16-18 X 2 GR8 ZN
7	3018044	2	NUT, HEX 9/16-18 ZN PLATED
8	3027910	2	WASHER, SPLIT LOCK 9/16 ZN YEL
9	3034483	2	WASHER, FLAT 9/16 SAE ZN
10	FWF050106010	2	WASHER, FLAT, 1/2" SAE, ZN
11	3036285	2	SPACER
12	3036286	2	SPACER

WARRANTY

Buyers Products Co. warrants all truck/trailer hardware manufactured or distributed by it, to be free from defects in material and workmanship for a period of one year from date of shipment. Parts must be properly installed and used under normal conditions. Any product which has been altered, including modification, misuse, accident or lack of maintenance will not be considered under warranty. Normal wear is excluded. The sole responsibility of Buyers Products Co. under this warranty is limited to repairing or replacing any part or parts which are returned, prepaid, and are found to be defective by Buyers Products Co. Authorization from Buyers Products Co. must be obtained before returning any part. No charges for transportation or labor performed on Buyers' products will be allowed under this warranty.