



ORACLE LIGHTING

COMANCHE MJ TAIL LIGHTS

ORACLE PART #5909

INSTALLATION GUIDE

TOOLS NEEDED:
PHILLIPS HEAD SCREWDRIVER
FLAT HEAD SCREWDRIVER
WIRE CRIMPS
STRIPPERS
HEAT SOURCE

STEP: 1

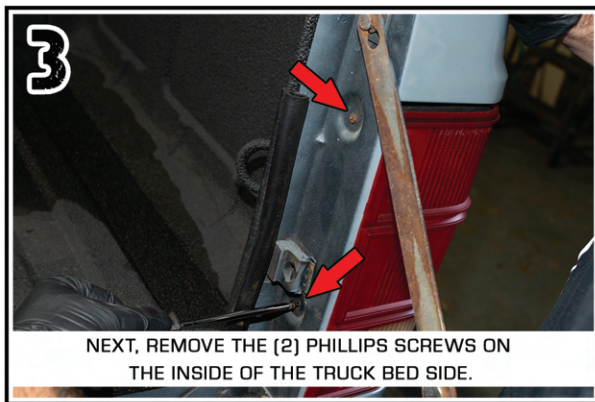
WATCH THE VIDEO
SCAN QR OR VISIT:



WWW.YOUTUBE.COM/WATCH?V=F5GKZSYK2ZO



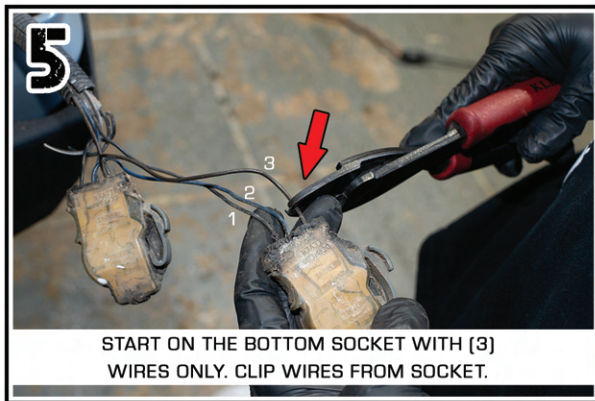
REMOVE THE (2) PHILLIPS SCREWS ON THE OUTSIDE OF THE LENS.



NEXT, REMOVE THE (2) PHILLIPS SCREWS ON THE INSIDE OF THE TRUCK BED SIDE.



NOW TAIL LIGHT CAN BE REMOVED. UNPLUG THE SOCKETS FROM THE TAIL LIGHT.



START ON THE BOTTOM SOCKET WITH (3) WIRES ONLY. CLIP WIRES FROM SOCKET.



CONNECT THE BLACK WIRE TO THE BLACK WIRE ON THE QUICK DISCONNECT.



CONNECT THE BLUE WIRE TO THE WHITE WIRE ON THE QUICK DISCONNECT.



CONNECT THE BROWN WIRE TO THE YELLOW WIRE ON THE QUICK DISCONNECT.



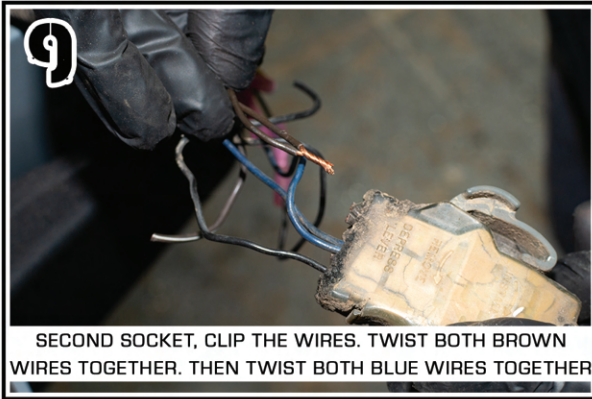
ORACLE LIGHTING

COMANCHE MJ TAIL LIGHTS

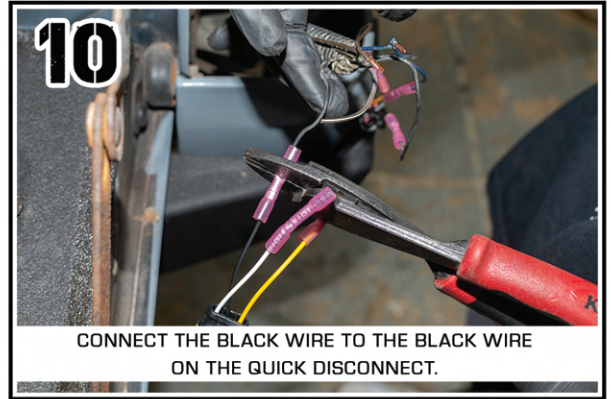
ORACLE PART #5909

INSTALLATION GUIDE

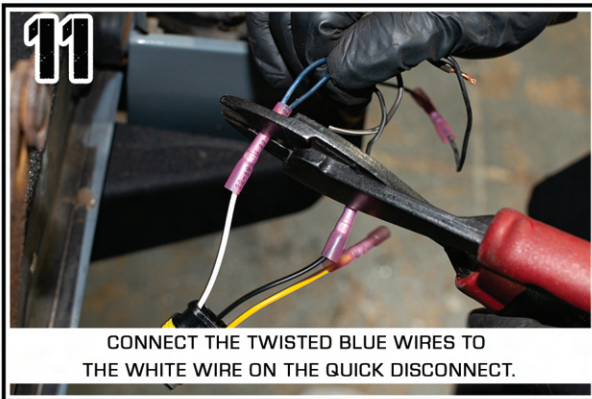
TOOLS NEEDED:
PHILLIPS HEAD SCREWDRIVER
FLAT HEAD SCREWDRIVER
WIRE CRIMPS
STRIPPERS
HEAT SOURCE



9
SECOND SOCKET, CLIP THE WIRES. TWIST BOTH BROWN WIRES TOGETHER. THEN TWIST BOTH BLUE WIRES TOGETHER



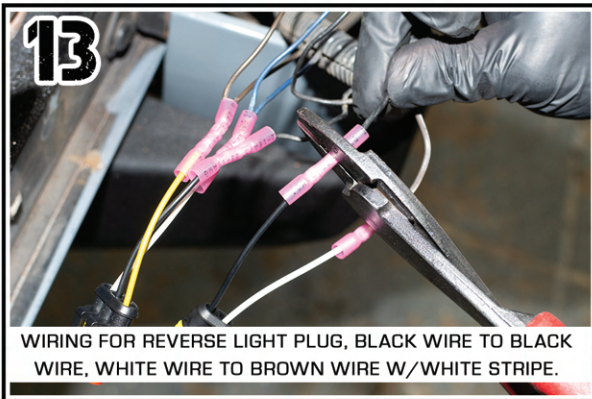
10
CONNECT THE BLACK WIRE TO THE BLACK WIRE ON THE QUICK DISCONNECT.



11
CONNECT THE TWISTED BLUE WIRES TO THE WHITE WIRE ON THE QUICK DISCONNECT.



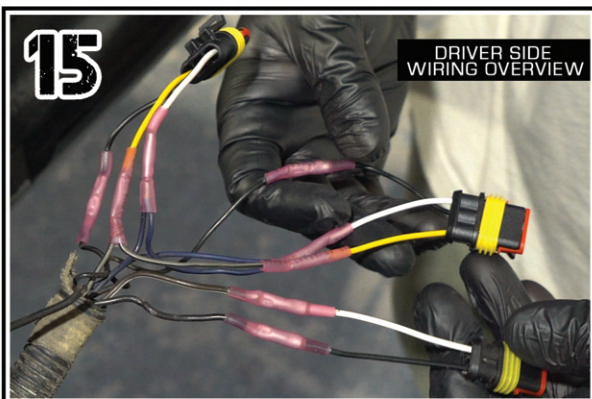
12
CONNECT THE TWISTED BROWN WIRES TO THE YELLOW WIRE ON THE QUICK DISCONNECT.



13
WIRING FOR REVERSE LIGHT PLUG, BLACK WIRE TO BLACK WIRE, WHITE WIRE TO BROWN WIRE W/WHITE STRIPE.



14
HEAT UP THE HEAT SHRINK ON THE END OF THE CONNECTORS. USE A HEAT GUN OR OTHER HEAT SOURCE.



15
DRIVER SIDE WIRING OVERVIEW



16
REMOVE ORIGINAL SPEED CLIPS. REPLACE WITH NEW SPEED CLIPS. NOW YOU CAN INSTALL YOUR NEW TAIL LIGHTS.