

BULLSEYE™

12V DC TIRE INFLATOR

INFLATES TIRES
IN LESS THAN

 **2 minutes***
from 24 to 34 PSI

✓ **Powerful**
✓ **Fast**



5 YEAR
WARRANTY

GREAT FOR:

- CAR TIRES
- BICYCLE TIRES
- MOTORCYCLE TIRES
- SPORTS BALLS
- & MORE

**Sound
& Light
ALERT**



AT PRESET PRESSURE
WITH AUTO SHUT OFF



DIGITAL PRESSURE
GAUGE

**AUTOMATIC
SHUT OFF** 
AT PRESET PRESSURE

Thank you for buying the Bullseye 12V DC Tire Inflator - the handheld air compressor that makes it quick and easy to inflate car tires and more! Bullseye™ 12V DC Tire Inflator uses powerful class leading air compressor technology to pull in outside air and compress it before pumping it into the tire. It also features an auto-stop function that will automatically stop at your desired tire pressure and 3 nozzle attachments for a variety of uses.

PLEASE READ ENTIRE MANUAL BEFORE FIRST USE.

GENERAL SAFETY MEASURES AND PRECAUTIONS THAT APPLY TO THE USE OF THE BULLSEYE™.

Safe operation of the air compressor requires that you read the instructions and safety precautions carefully and follow all the instructions before using the air compressor.

1. The air compressor is designed for occasional use. Inflation over a long period will overheat the air compressor and may cause damage.
2. The air compressor should not operate for more than 15 minutes at a time, after which it must be switched off and set aside to cool for at least 15 minutes before restarting. Allow the unit to cool for 15 minutes after each 15 minutes of use.
3. If the air compressor emits abnormal sounds or overheats, turn it off immediately and let it cool off for a minimum of 30 minutes.
4. Inspect air compressor before use, If cracked, broken or damaged parts are found, qualified technicians should repair damaged parts.
5. Incorrect use of the air compressor may result in personal injury and/or property damage.
6. Never expose the air compressor to frost or to temperatures above 140°F (60°C).
7. Never use the air compressor near flammable fluids or gases. Make sure your working area is well-lit.
8. Protect yourself against electric shock. Avoid physical contact with grounded surfaces such as pipes, radiators, electric stoves, refrigerators, etc.
9. Never allow children to connect/disconnect the air compressor and never allow them to play with accessories.
10. Never allow anyone to pump air into mouth, ears, nose or any personal cavity of people or animals. The air compressor is not a toy.
11. Store air compressor in a secure location. If the air compressor is going to be unused for long periods of time, it should be stored in a dry place inaccessible to children.
12. Regularly check the 12V DC car charger. Make sure the cord is not exposed to hot objects, oil or sharp edges. Keep air compressor clean to maintain maximum output and safety. Examine the plug, charger, and cable pack on a regular basis and have them repaired by qualified technicians if they are damaged.

13. Unplug the 12V DC car adapter from the cigarette lighter socket in your car when the air compressor is not in use.

14. Stay alert. Always pay attention to what you are doing when working with the air compressor.

15. **WARNING!** For your own safety, only use accessories and parts specified in these instructions or recommended for use by the manufacturer. Use of accessories and other parts that are not mentioned in these instructions may entail an increased risk for the user and the air compressor.

16. To reduce the risk of electric shock, do not immerse in water. Store indoors.

17. Risk of burning - Do not adjust the regulator to result in output greater than marked maximum pressure of attachment.

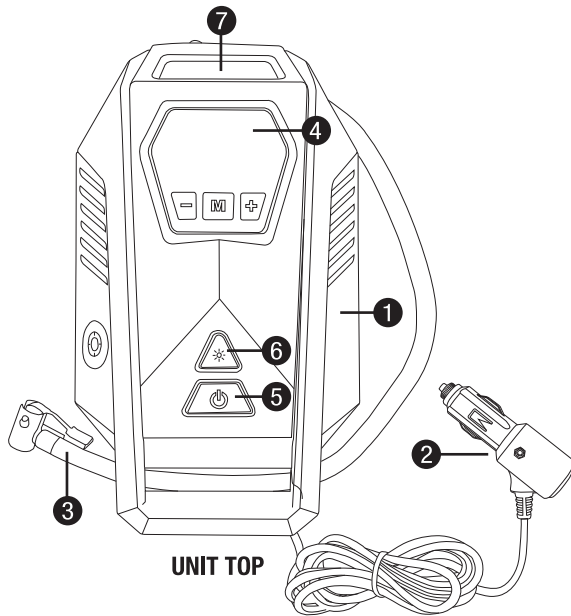
18. Do allow unit to cool down then do replace or discharge the attachments.

19. **WARNING:** Risk of injury - Do not direct compressor air stream at body.

20. Do not overinflate.

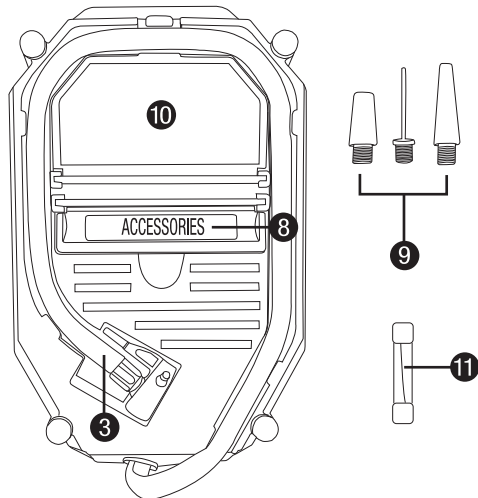
FOR HOUSEHOLD USE ONLY SAVE THESE INSTRUCTIONS

COMPONENTS

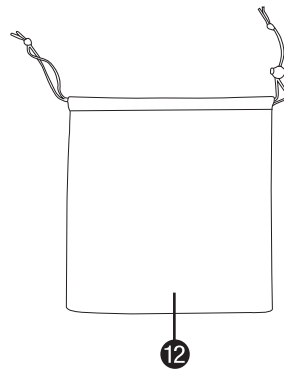


UNIT TOP

- ❶ Inflator unit
- ❷ 12V DC Cigarette Lighter Car Charger (9.8ft / 3M) with indicator light
- ❸ 18" Flexible Air Hose with Quick Connector
- ❹ Digital LCD display
- ❺ Inflator ON/OFF button
- ❻ Light ON/OFF button
- ❼ LED COB Light
- ❽ Nozzle Accessory Storage
- ❾ 2 plastic nozzle adapters and 1 metal sports needle
- ❿ 12V DC Car Charger-Storage Compartment
- ⓫ 1 Spare Fuse (15amp)
- ⓬ Fabric carry bag

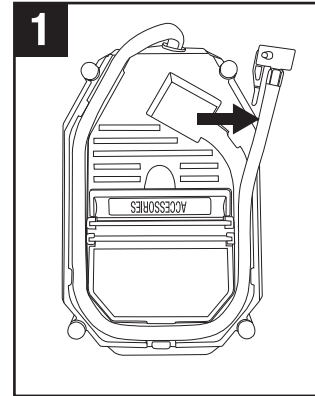


UNIT BOTTOM

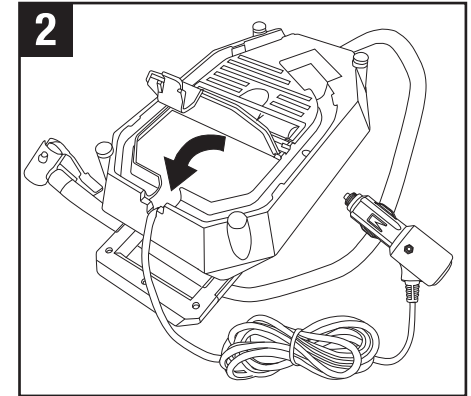


Please read and fully understand all of the instructions provided in this manual prior to operation.

SETTING UP YOUR BULLSEYE TIRE INFLATOR



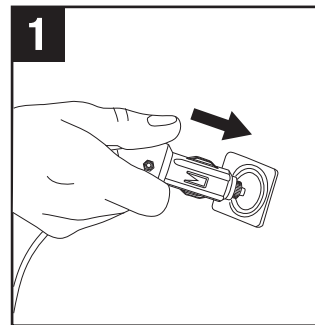
- Turn the inflator unit over.
- Remove the hose from the storage track. It is easier to remove the hose starting from the Quick Connector Valve end and lift gently until the hose is completely removed.



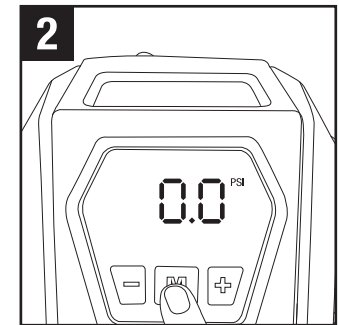
- Open the charger storage compartment door. Remove the 12V DC car charger.
- Tuck the cable into the opening of the compartment as shown above. Close the storage compartment.
- Turn the inflator unit over and place it on a leveled surface. Fully unwind the cable.

INFLATION INSTRUCTIONS – Inflating Tires

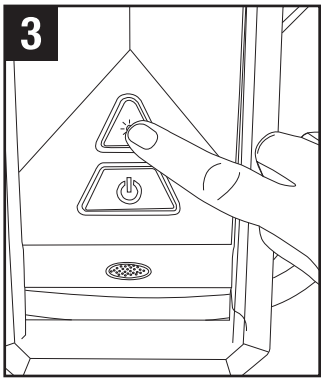
WARNING: Use with 12V DC outlets 10 amps or higher. If unsure, check your vehicle's owner manual for your DC socket power rating.



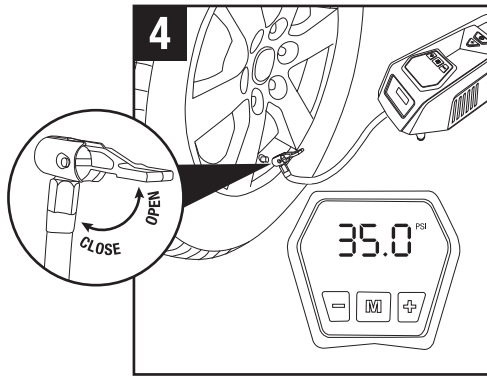
- Connect the 12V DC Car Charger into the DC socket in your car.
- When ready to use, power the car on. Note: Always operate vehicle outdoors. The light on the end of the charger will light up green indicating power connection and LCD display will illuminate.



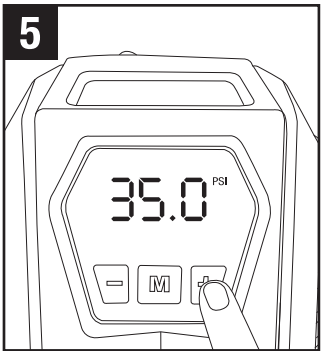
To choose and set the desired pressure format (PSI, BAR, KPA, KG/cm²), press the **M** button until the desired format is displayed.





In the case of poor light conditions, press the  button to turn on the built-in flashlight.

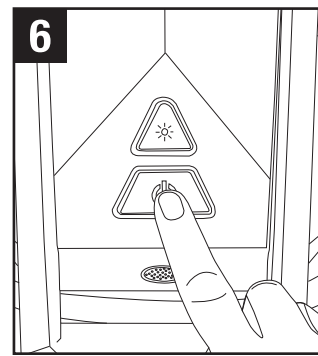





- Remove valve cover (if needed).
- Flip the lever of the Flexible Air Hose Quick Connector into the up/open position.
- Attach the end of the quick connector onto the tire's valve stem quickly. Lower the lever (down/closed position) to lock it in place.
- When connected, the gauge on the Digital LCD Display will show the tire's current pressure.



- To set the desired tire pressure, press the  or  buttons until the desired pressure level has been reached.
- Once set, wait a moment until the current tire pressure display returns.

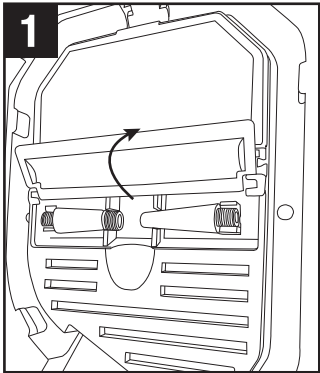
Note: To avoid over inflation of tires, always follow the the recommended tire pressure in the vehicle's owner manual or door jamb. For bicycle tires, check markings on tire.



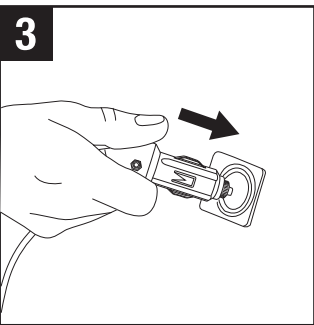
- Press the Inflator button  to start the pump motor and the light on the end of the charger will turn red. The Inflator will begin to inflate the tire to the set pressure level.
- Once it has been reached, the inflator will turn off by itself, the light on the end of the charger will flash green and a long beep will sound. The beeping sound will remain for up to 5 minutes and will turn off automatically unless the charger is unplugged from the power source sooner.
- To shut off the pump motor at any time during the pumping cycle, press the Inflator button  and the unit will turn off. To turn the motor back on, press the Inflator button .

- 7**
- Once your tire inflation is complete and the motor is off, flip the lever of the Air Hose Quick Connector into the up/open position. Remove the Quick Connector from the tire stem valve quickly and replace the valve stem cover on the tire stem (if needed).
- WARNING: Air hose connector may be hot. Use caution when removing.**
- Disconnect the 12V DC Car charger.

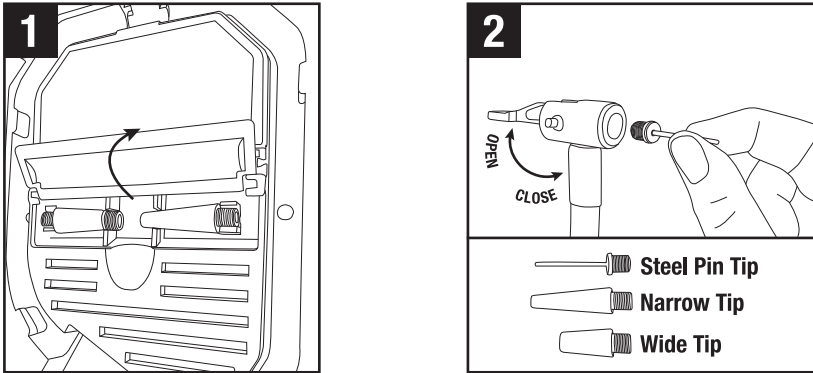
INFLATION INSTRUCTIONS – Inflating with additional tips



Open the Nozzle Accessory Storage compartment door and carefully remove the desired Nozzle accessory.



- Connect the 12V DC Car Charger into the DC socket in your car.
- When ready to use, power the car on. Note: Always operate vehicle outdoors. The light on the end of the charger will light up green indicating power connection and LCD display will illuminate.

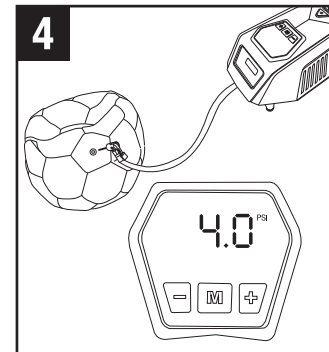


Flip the lever of the Air Hose Quick Connector into the up/open position. Slide the selected nozzle accessory into the Flexible Air Hose Quick Connector. Next, lower the lever into the down/closed position. This will create a seal and will hold the tip in place.

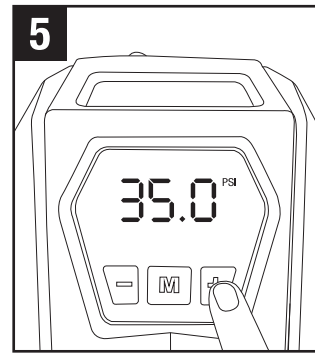
Plastic Narrow and Wide Tips -

Use for inflatables & more.

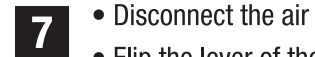
Steel Pin Tip - Use for balls, sport equipment & more.



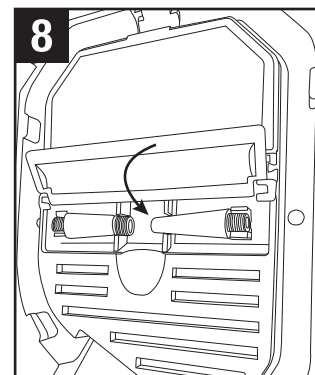
- Insert the nozzle tip into the object to be inflated.
- When connected, the gauge on the Digital LCD Display will show the object's current pressure.



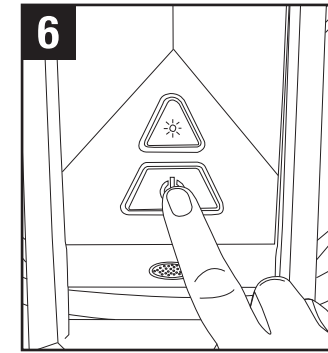
- To set the desired inflatable pressure, press the **-** or **+** buttons until the desired pressure level has been reached.
- Once set, wait a moment until the current inflatable pressure display returns.




- Disconnect the air hose nozzle from the inflated item.
- Flip the lever of the Air Hose Quick Connector into the up/open position.
- Disconnect the 12V DC Car charger.

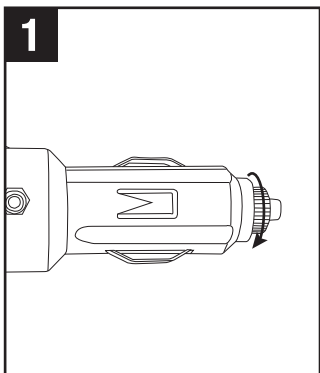


LEFT RIGHT
Insert the Steel Pin Tip into the Wide Tip for storage.

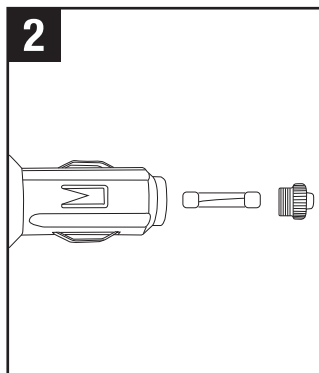


- Press the Inflator button  to start the pump motor. The Inflator will begin to inflate the object to the set pressure level. Once it has been reached, the inflator will turn off by itself, the light on the end of the charger will flash green and a long beep will sound. The beeping sound will remain for up to 5 minutes and will turn off automatically unless the charger is unplugged from the power source sooner.

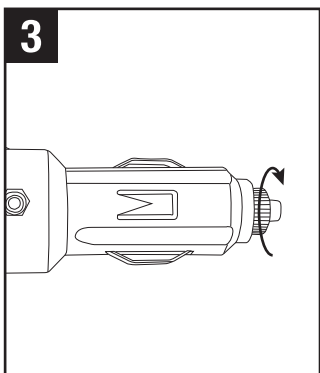
REPLACING THE FUSE (12V DC CAR ADAPTER)



Carefully unscrew the front washer from the 12V DC adapter (it is spring loaded).

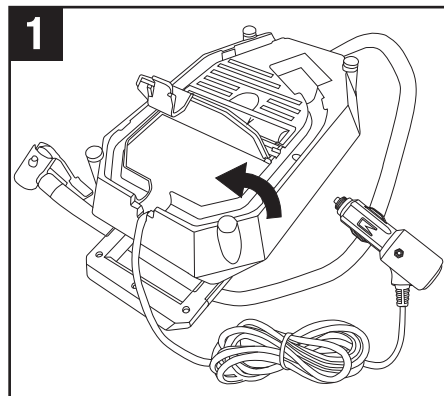


Remove and discard the old fuse. Insert the new fuse (either end).

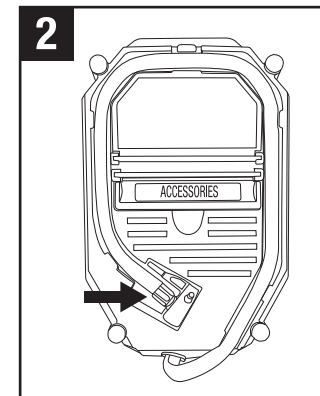


Place the washer back on and tighten it. Do not overtighten. Do not use tools.

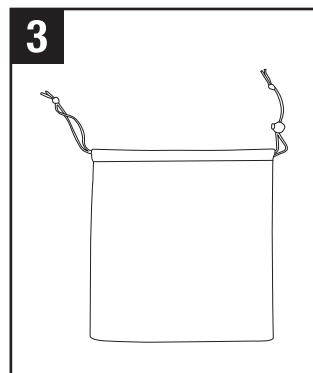
PACKING INSIDE STORAGE CASE



- Turn the inflator unit over.
- Open the charger storage compartment.
- Tuck the 12V DC car charger with cable into the compartment and close it.



Start with inserting the Quick Connector Valve end first. Then tuck the rest of the hose into the storage track, as shown above.



Insert the Inflator into the storage bag.