



⚠ WARNING

Read this material before using this product.
Failure to do so can result in serious injury.
SAVE THIS MANUAL.

ITEM #2214875, 2381556, 2381557

**13 DRAWER TOOL
CHEST & CART
COMBINATION**

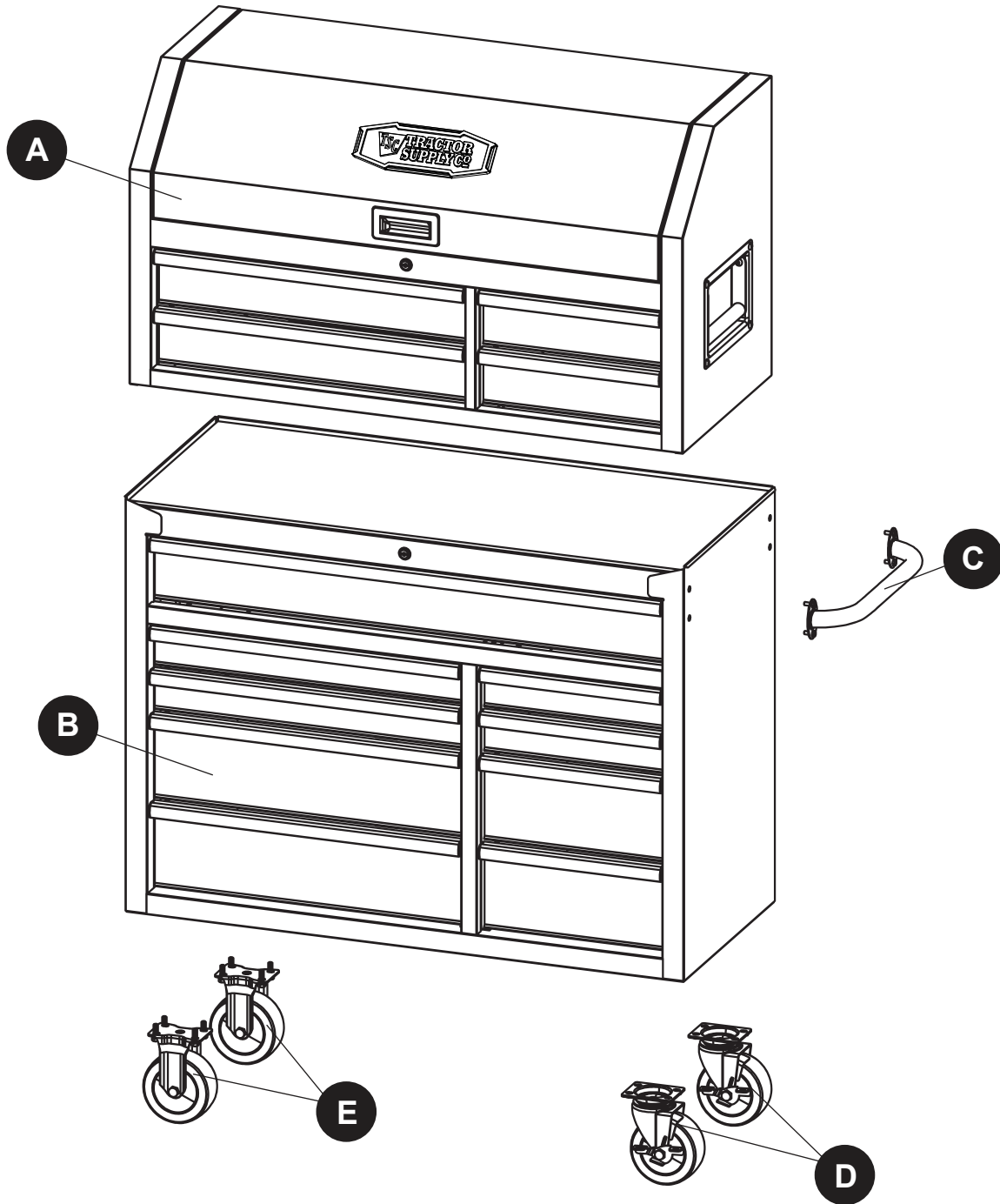
TABLE OF CONTENTS

Package Contents.....	3
Hardware Contents.....	4
Safety Information.....	5
Preparation.....	6
Assembly Instructions.....	7
Operating Instructions.....	9
Care and Maintenance.....	10
Warranty.....	10
Replacement Parts List.....	11

PRODUCT SPECIFICATIONS

COMPONENTS	SPECIFICATIONS
Maximum drawer capacity	100 lbs.
Maximum total capacity	1200 lbs.
Maximum output of power strip	1875 watts
USB Current	5V DC 2.1A

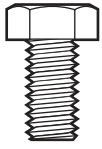
PACKAGE CONTENTS



PART	DESCRIPTION	QUANTITY
A	Top chest	1
B	Bottom cabinet	1
C	Cabinet handle	1
D	Swivel caster with brake	2
E	Fixed caster	2

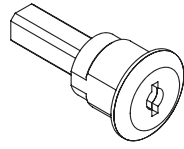
HARDWARE CONTENTS (shown actual size)

AA



M6 x 16 mm
Bolt
Qty. 4

BB



Lock
(Preassembled to chest
and cabinet)
Qty. 2

CC



Key
(Preassembled to lock
mechanisms)
Qty. 4

DD



Wrench
Qty. 1



SAFETY INFORMATION

Please read and understand this entire manual before attempting to assemble or operate this product. Failure to follow may result in serious injury. Save all warnings and instructions for future reference.

Cord Extension Set with surge protector model: LTS-04C

Unique Identifier: LTS-04C

FCC Responsibility Party

Company Name: OLYMPIA TOOLS INTERNATIONAL INC.

Company Address: 929 N GRAND AVE, COVINA, CA 91724,US

Telephone Number: 626-336-4999

Email: vincentl@olympiatools.com

CAUTION: Changes or modifications not expressly approved by the party responsible for compliance could void the user's authority to operate the equipment.

This device features an internal protection that will disconnect the surge protective component but will maintain power to the load - now unprotected. If this situation is undesirable for the application, follow the manufacturer's instructions for replacing the device.



WARNING

- Do not stand or step on this product. You may fall which may cause personal injury or product damage.
- When locking a chest/cabinet, close the drawers completely in order for the lock bars to work properly.
- Lock wheels when chest and cabinet is not being moved.
- Secure this product properly before moving it with a forklift.
- Do not attach or mount this product to a vehicle. This may cause personal injury or product damage.

CAUTION

- Do not exceed the maximum drawer weight and total product weight, including contents. Always balance the chest and cabinet load to avoid tipping. Place more than half the total load weight on the bottom cabinet when possible.
- Be careful when opening more than one drawer. The product may become unstable and tip, which may also cause personal injury or product damage.
- Be careful when closing the top chest lid. Remove hands before closing the top lid.
- Keep the product on level surfaces. The product may become unstable and tip if stored or moved on an unlevel surface, which may cause personal injury or product damage.
- Secure all items and lock both the lid and all drawers before rolling this product. Only roll the product short distances by using the handle provided.
- Two people are needed to safely move this unit.
- Do not store liquids in the unit unless they are secured in an approved container.
- Keep children and bystanders away while loading, unloading, and moving the product.

- Always use common sense and be cautious when using this product. Do not modify this product in any way.
- Follow all below information for extension cord
Do NOT insert extension cord through hole without grommet in place.
Only use a three-wire extension cord with all three prongs intact. Never remove the round grounding prong.
Extension cord must be connected to a 125Volt GFCI protected outlet with proper ground. If GFCI outlet is not available, use an extension cord with GFCI protection built in.
Check the insulation and plugs of extension cord before using. Do NOT use cord if it is worn or damaged.
Do NOT overload extension cord.
Remove extension cord from the hole before moving or transporting storage chest.
Do NOT connect extension cord to outlet that also supplies critical safety equipment with power.
Make sure the power supply cord is unplugged before any servicing or cleaning.



SAFETY INFORMATION

- Follow all below information to avoid electrical shock hazard
Do not plug cord into outlet with wet hands.
Do not use this tool chest near a bathtub, a shower, or a swimming pool.
Chest/Cabinet plugs must match the outlet.
Never modify the plug in any way.
Do not use any adapter plugs with earth (grounded) chest power strips.
Unmodified plugs and matching outlets will reduce the risk of electric shock.
Avoid body contact with earthed or grounded surfaces. There is an increased risk of electric shock if your body is earthed or grounded.
- Refer all below information for FCC rules
This device complies with part 15 of the FCC Rules. Operation is subject to the following two conditions: (1) This device may not cause harmful interference, and (2) this device must accept any interference received, including interference that may cause undesired operation.
Note: This equipment has been tested and found to comply with the limits for a Class B digital device, pursuant to part 15 of the FCC Rules. These limits are designed to provide reasonable protection against harmful interference in a residential installation. This equipment generates, uses and can radiate radio frequency energy and, if not installed and used in accordance with the instructions, may cause harmful interference to radio communications. However, there is no guarantee that interference will not occur in a particular installation. If this equipment does cause harmful interference to radio or television reception, which can be determined by turning the equipment off and on, the user is encouraged to try to correct the interference by one or more of the following measures:
 - Reorient or relocate the receiving antenna.
 - Increase the separation between the equipment and receiver.
 - Connect the equipment into an outlet on a circuit different from that to which the receiver is connected.
 - Consult the dealer or an experienced radio/TV technician for help.**CAUTION:** Changes or modifications not expressly approved by the party responsible for compliance could void the user's authority to operate the equipment.

PREPARATION

Before beginning assembly of product, make sure all parts are present. Compare parts with package contents list and hardware contents list. If any part is missing or damaged, do not attempt to assemble the product.

Estimated Assembly Time: 15 minutes (does not include unpacking time)

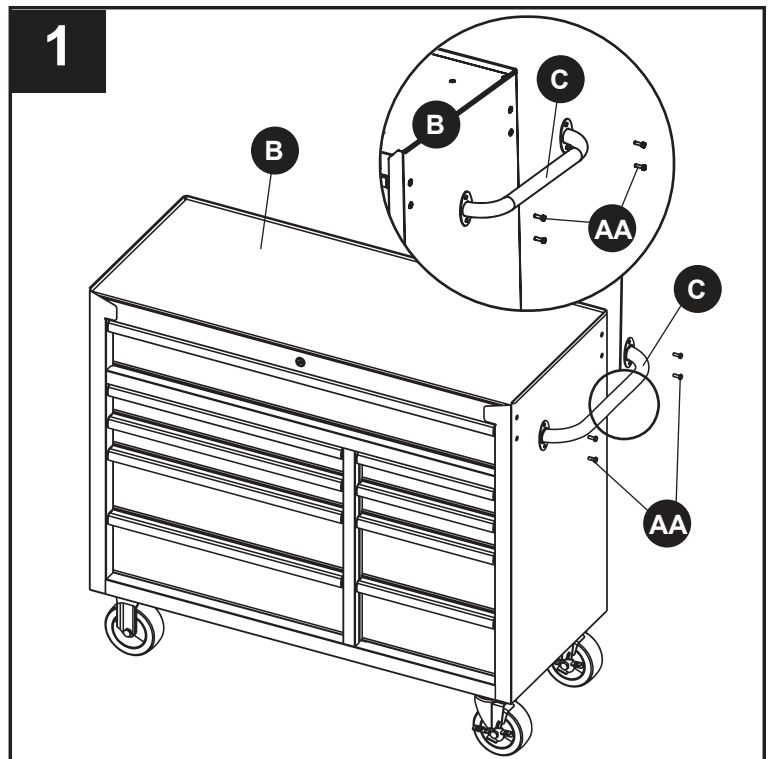
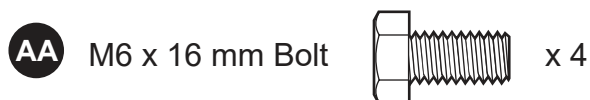
Tools Required for Assembly (included): 10 mm Wrench

ASSEMBLY INSTRUCTIONS

1. Attach the cabinet handle (C) to the bottom cabinet (B) using M6 x 16 mm bolts (AA).

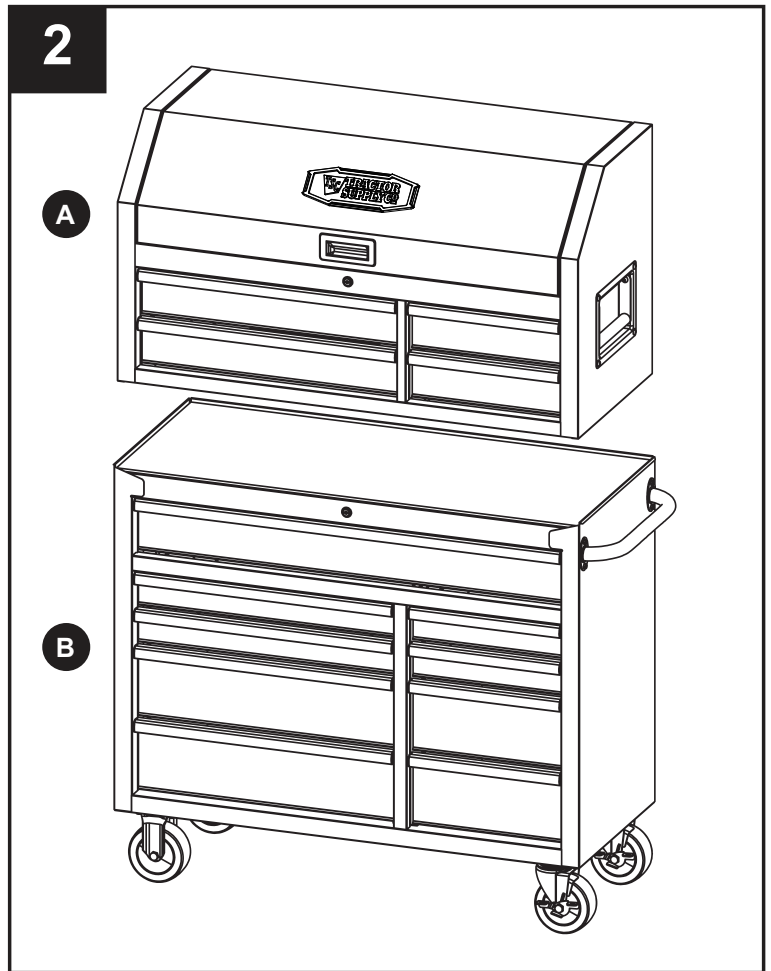
Note: The cabinet handle (C) can be attached to either side of the bottom cabinet (B), but must match the end where the swivel casters with brake (D) will be installed. The holes in bottom cabinet (B) are tapped and do not require nuts.

Hardware Used



ASSEMBLY INSTRUCTIONS

2. You can stack the top cabinet (A) on the bottom cabinet (B) and use it together.

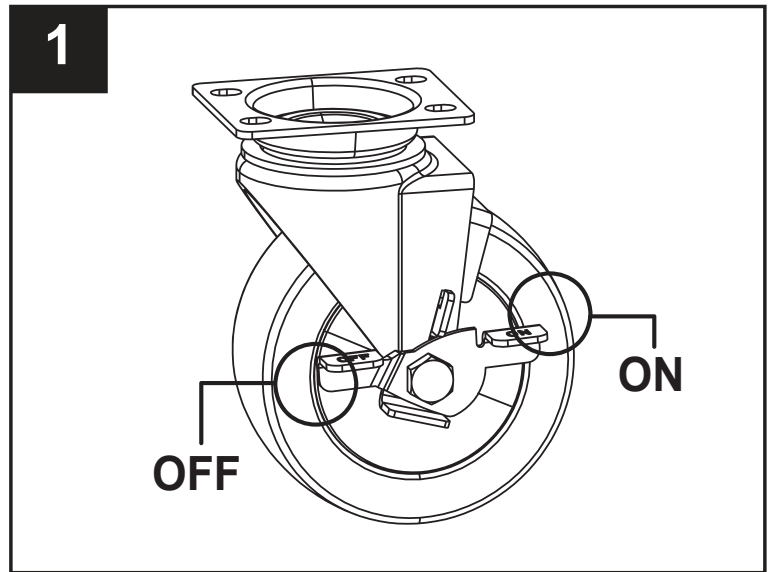


OPERATING INSTRUCTIONS

1. Using the caster brakes

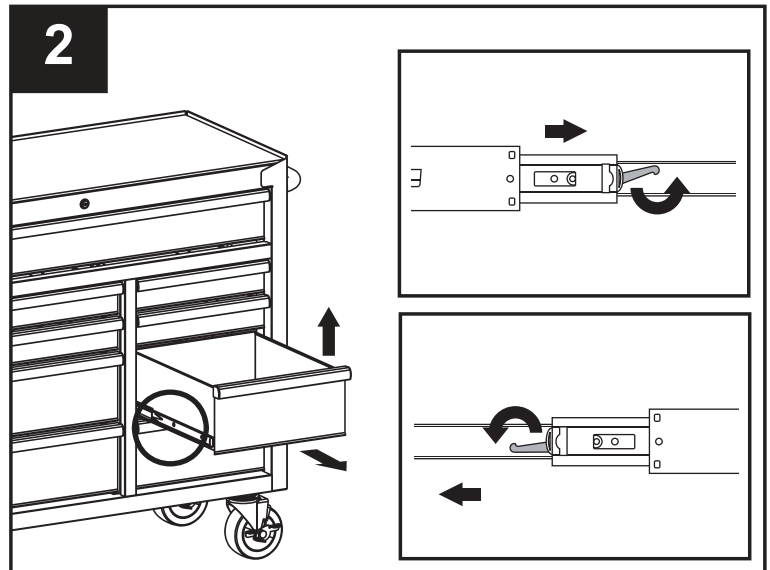
To lock the swivel casters, step down on the levers marked with ON. To unlock casters, push down on the levers marked with OFF.

Note: Be sure to lock both casters to prevent cabinet from rolling or swiveling.



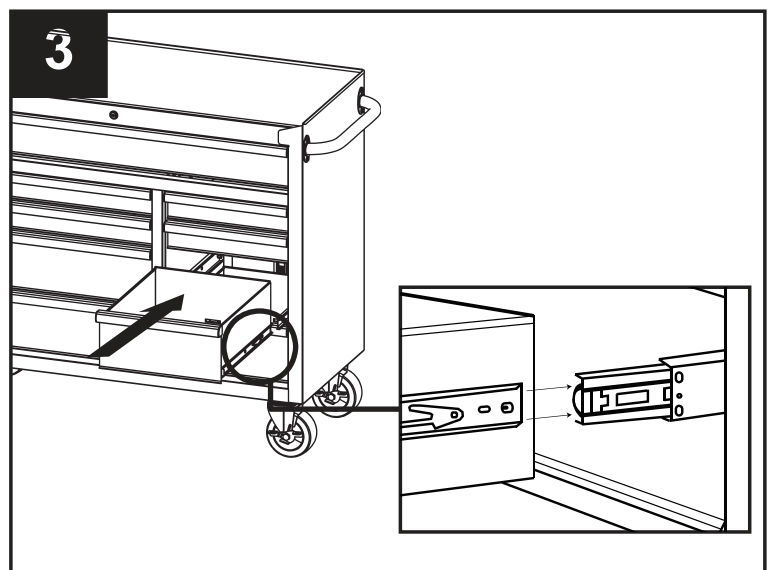
2. Removing the drawers

Fully empty and extend the drawer. Push up the release lever on the left drawer slide while pulling down on the other release lever. Pull the drawer outward until it is released from the slides.



3. Re-inserting the drawers

Pull the slides and slide carrier out until fully extended. Hold the slide on the drawer while aligning it with the slide on the chest. Slightly insert one side and repeat for the other side. Slowly push the drawer until it is fully closed to engage the slide. Open and close the drawer to verify proper operation.

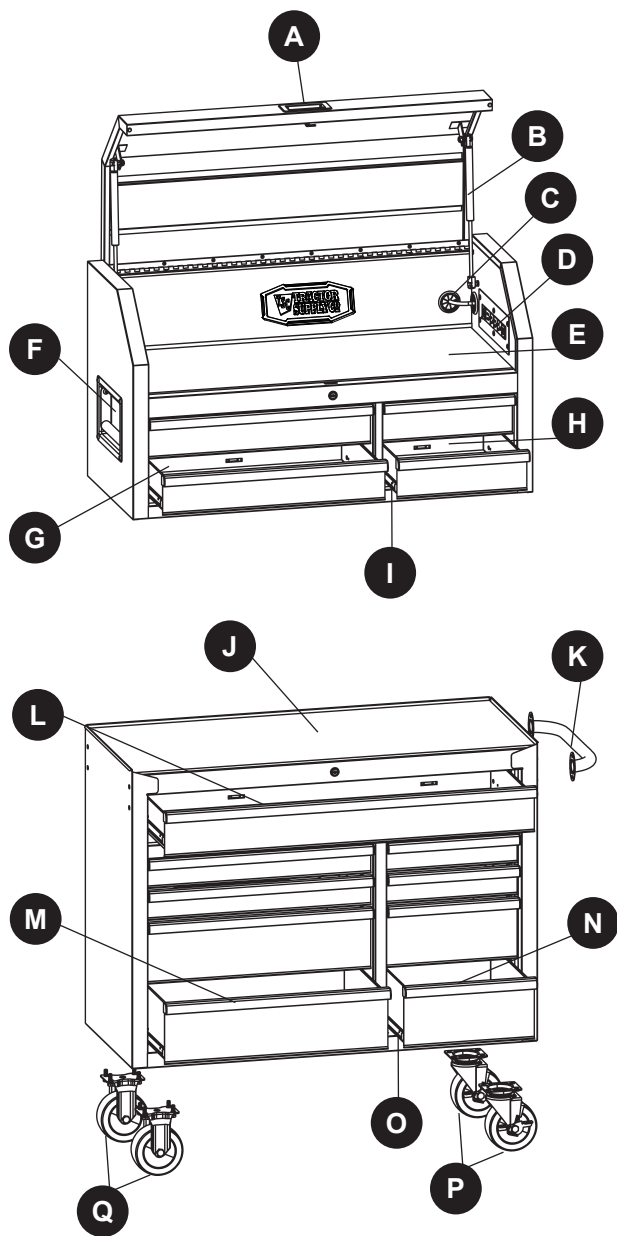


CARE AND MAINTENANCE

- Keep your chest/cabinet in good repair by adopting a regular maintenance program.
- The use of drawer liners (included) is recommended to protect the finish inside the drawers and make the drawers easier to clean.
- Grease the casters annually using high quality bearing grease.
- Lubricate the slides semi-annually with general purpose grease or equivalent.
- Periodically clean the drawer fronts, drawer trim, and other surfaces with a mild detergent and water.
- Remove grease and oil with a standard nonflammable cleaning fluid.

3-YEAR HASSLE-FREE WARRANTY

For 3 years from the date of purchase, this product is warranted for the original purchaser to be free from defects in material and workmanship. This guarantee does not cover damage due to abuse, normal wear, improper maintenance, neglect, unauthorized repair/alteration, or expendable parts and accessories expected to become unusable after a reasonable period of use.



PART	DESCRIPTION	QTY
A	Lid handle	1
B	Gas strut	2
C	Rubber grommet	3
D	Power strip	1
E	Top chest mat	1
F	Top chest side handle	2
G	Top chest left drawer liner	2
H	Top chest right drawer liner	2
I	Top chest drawer slide	8

PART	DESCRIPTION	QTY
J	Top cabinet mat	1
K	Cabinet handle	1
L	Big drawer liner	1
M	Bottom cabinet left drawer liner	4
N	Bottom cabinet right drawer liner	4
O	Bottom cabinet drawer slide	18
P	Swivel caster with brake	2
Q	Fixed caster	2
AA	M6 x 16 mm Bolt	4
BB	Lock	2
CC	Key	4
DD	Wrench	1

REPLACEMENT PARTS LIST



Distributed by: TRACTOR SUPPLY COMPANY
 5401 VIRGINIA WAY BRENTWOOD, TN 37027
 For customer support, call: 1-888-376-9601
www.TractorSupply.com

