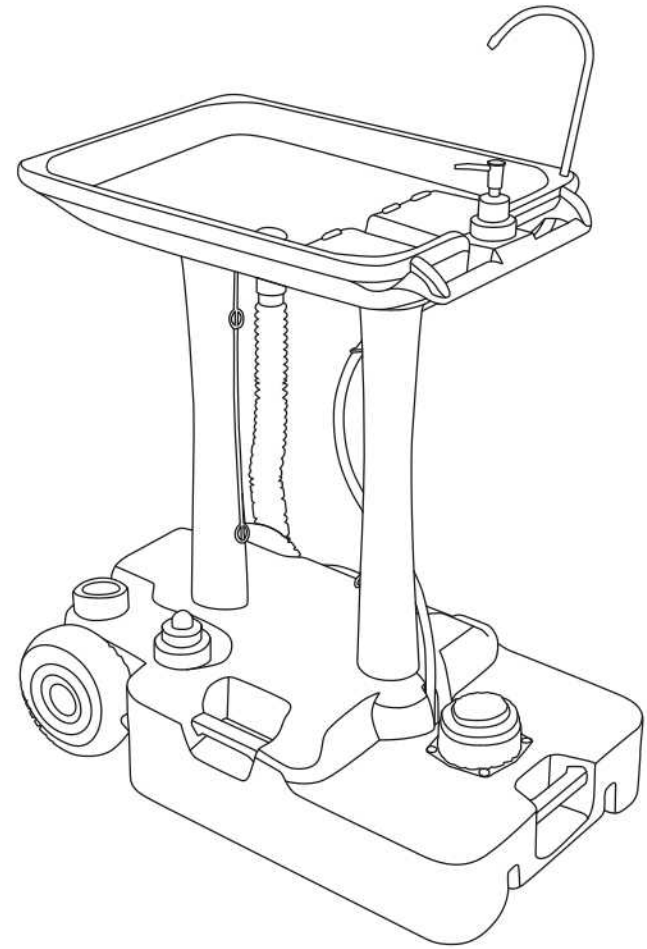




XL PORTABLE OUTDOOR SINK

USER GUIDE

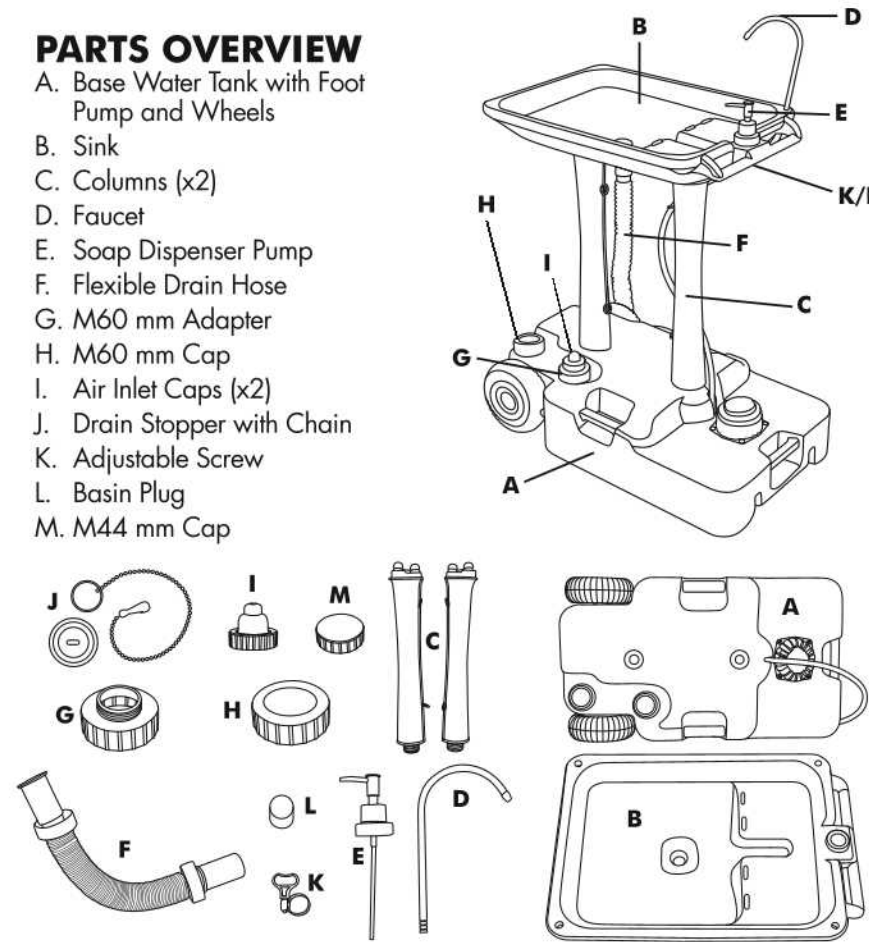
HCCHH7702



Thank you for purchasing the Hike Crew XL Portable Outdoor Sink. This User Guide is intended to provide you with guidelines to ensure that operation of this product is safe and does not pose risk to the user. Any use that does not conform to the guidelines described in this User Guide may void the limited warranty. Please read all directions before using the product and retain this guide for reference. This product is intended for household use only. It is not intended for commercial use. This product is covered by a limited one-year warranty. Coverage is subject to limits and exclusions. See warranty for details.

PARTS OVERVIEW

- A. Base Water Tank with Foot Pump and Wheels
- B. Sink
- C. Columns (x2)
- D. Faucet
- E. Soap Dispenser Pump
- F. Flexible Drain Hose
- G. M60 mm Adapter
- H. M60 mm Cap
- I. Air Inlet Caps (x2)
- J. Drain Stopper with Chain
- K. Adjustable Screw
- L. Basin Plug
- M. M44 mm Cap

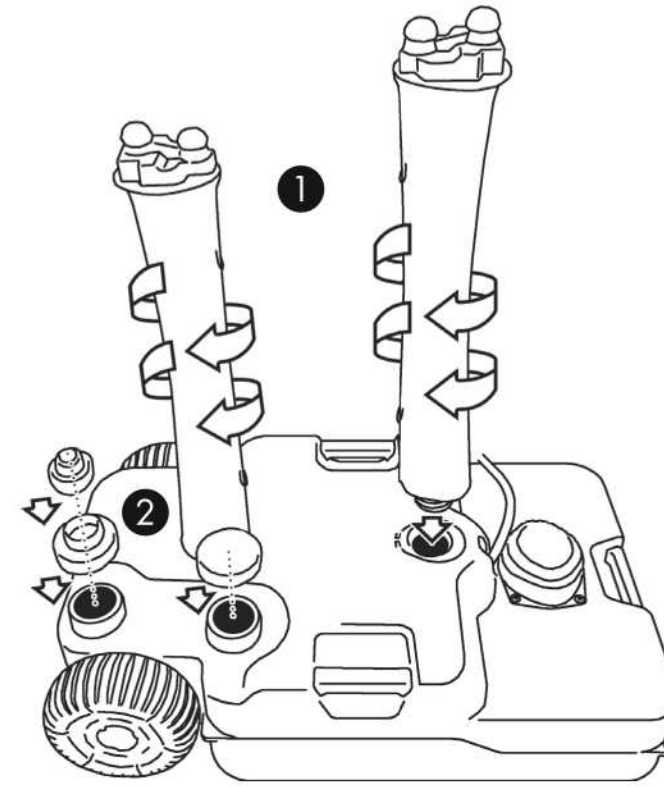


ASSEMBLY INSTRUCTIONS

NOTE: Always assemble appliance according to the instructions.

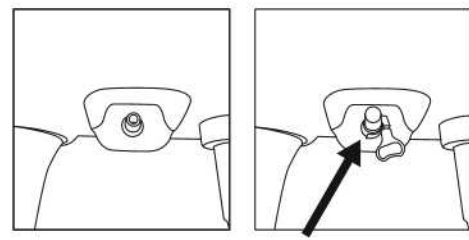
1. Place the base water tank (A) on a flat, level surface. Screw both columns (C) into the base water tank (A) until they are in the locked position.
2. Fasten the M60 mm cap (H) over one of the holes on the base water tank (A). Then, fasten the M60 mm adapter (G) and one (I) air inlet cap (I) over the other hole.

NOTE: The holes are interchangeable meaning that you can put the caps on either one of the holes. As long as both holes are covered, you will get the same result needed for your sink to operate correctly.



3. Fasten the adjustable screw (K) over the opening under the sink (B) that is covered by the basin plug (L).

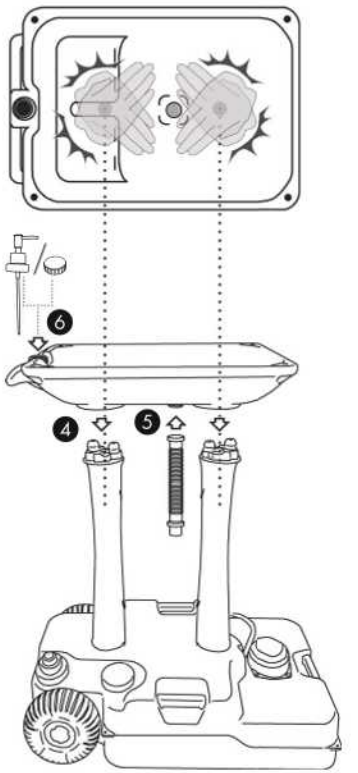
NOTE: The adjustable screw needs to be fastened over the basin plug to prevent liquid soap leakage.



4. Attach the sink (B) onto the two (2) columns (C), making sure the sink (B) is locked firmly in place.

5. Screw the flexible drain hose (F) onto the bottom of the sink (B). Stretch out the flexible drain hose (F) and let the other end lay down on the ground.

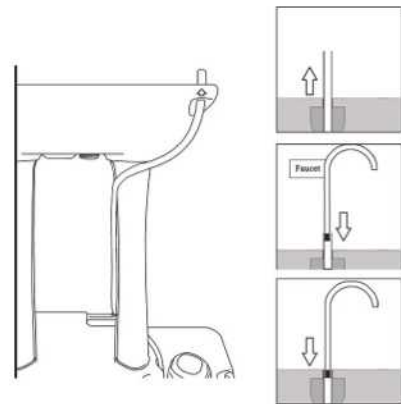
NOTE: This model does not come with a waste tank. Wastewater will simply flow out the drain hose. You can let the drain hose sit in a bucket or simply let it rest on the ground. The drain hose can connect to a waste tank, but the waste tank must be purchased separately.



6. Fill the soap compartment located on the sink (B) with liquid soap (not included). Then, screw in the soap dispenser pump (E) onto the soap compartment.

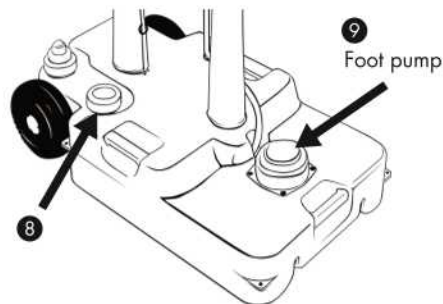
NOTE: Liquid soap is sold separately.

7. Insert water tube through outer hole on sink (B). Next, insert faucet (D) onto water tube that is connected to the base water tank (A). Then, zip tie water tube onto column (C).



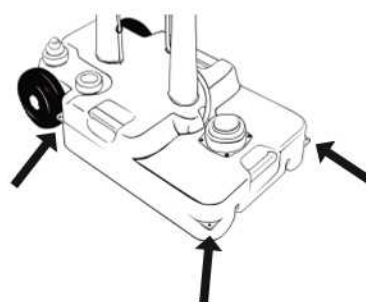
8. Unscrew the M60 mm cap (H) or the M60 mm adapter (G) and air inlet cap (I) located on the base water tank (A) and fill the base water tank (A) with fresh water.

NOTE: The second air inlet cap included in the packaging is for an electric water pump (not included). An electric water pump will turn your sink into an electric flush sink. This model is compatible with an electric water pump, but it must be purchased separately.



9. Step on foot pump located on the base water tank (A) to activate the water flow.

NOTE: Base water tank can be fixed into the ground, if necessary, using the four holes at each corner of the tank. Pegs are sold separately; they are not included.



10. Place the drain stopper with chain (J) on the hole in the middle of the sink (B) when you don't want the water in your sink (B) to be drained.

CARE & STORAGE

To clean the sink (B), remove the adjustable screw (K) and basin plug (L) under it before you wash the sink (B).

If you choose not to use the soap dispenser pump (E), you can cover the hole on the sink (B) with the M44 mm cap (M).

When storing your outdoor sink for a long period of time, remove the soap dispenser pump (E) and seal the hole with the M44 mm cap (M).

SPECIFICATIONS

Product length: 28.3"

Product width: 16.5"

Product height: 31.5"

Weight: 12.1 lbs.

Sink type: Foot pump

Material: High-density polyethylene

Sink length: 19.7"

Sink width: 15.9"

Water tank capacity: 7.9 gal.

Liquid soap tank capacity: 1.3 gal.

Water flow per step: 6 oz.

Location: Outdoor use only

Installation required: No

Adult assembly required: Yes

Additional tools required: No

Country of origin: China

Warranty included: Yes

Warranty length: 1 year

LIMITED WARRANTY TO ORIGINAL CONSUMER

This Hike Crew XL Portable Outdoor Sink ("Product"), including any accessories included in the original packaging, as supplied and distributed new by an authorized retailer is warranted by C&A Marketing, Inc. (the "Company") to the original consumer purchaser only, against certain defects in material and workmanship ("Warranty") as follows:

To receive Warranty service, the original consumer purchaser must contact the Company or its authorized service provider for problem determination and service procedures. Proof of purchase in the form of a bill of sale or receipted invoice, evidencing that the Product is within the applicable Warranty period(s), MUST be presented to the Company or its authorized service provider in order to obtain the requested service.

Service options, parts availability, and response times may vary and may change at any time. In accordance with applicable law, the Company may require that you furnish additional documents and/or comply with registration requirements before receiving warranty service. Please contact our customer service for details on obtaining warranty service:

Email: info@supportcbp.com

Phone: 833-855-1816

Shipping expenses to the Company's Return Facility are not covered by this warranty, and must be paid by the consumer. The consumer likewise bears all risk of loss or further damage to the Product until delivery to said facility.

EXCLUSIONS AND LIMITATIONS The Company warrants the Product against defects in materials and workmanship under normal use for a period of ONE (1) YEAR from the date of retail purchase by the original end-user purchaser ("Warranty Period"). If a hardware defect arises and a valid claim is received within the Warranty Period, the Company, at its sole option and to the extent permitted by law, will either (1) repair the Product defect at no charge, using new or refurbished replacement parts, (2) exchange the Product with a Product that is new or which has been manufactured from new or serviceable used parts and is at least functionally equivalent to the original device, or (3) refund the purchase price of the Product.

A replacement Product or part thereof shall enjoy the warranty of the original Product for the remainder of the Warranty Period, or ninety (90) days from the date of replacement or repair, whichever provides you longer protection. When a Product or part is exchanged, any replacement item becomes your property, while the replaced item becomes the Company's property. Refunds can only be given if the original Product is returned.

This Warranty does not apply to:

- (a) Any non-Hike Crew XL Portable Outdoor Sink product, hardware or software, even if packaged or sold with the Product;
- (b) Damage caused by use with non-Hike Crew XL Portable Outdoor Sink products;
- (c) Damage caused by accident, abuse, misuse, flood, fire, earthquake, or other external causes;
- (d) Damage caused by operating the Product outside the permitted or intended uses described by the Company;
- (e) Damage caused by third party services;
- (f) A Product or part that has been modified to alter functionality or capability without the written permission of the Company;

(g) Consumable parts, such as batteries, fuses, and bulbs;

(h) Cosmetic damage; or

(i) If any Hike Crew XL Portable Outdoor Sink serial number has been removed or defaced.

This Warranty is valid only in the country where the consumer purchased the Product, and only applies to Products purchased and serviced in that country.

The Company does not warrant that the operation of the Product will be uninterrupted or error-free. The Company is not responsible for damage arising from your failure to follow instructions relating to its use.

NOTWITHSTANDING ANYTHING TO THE CONTRARY AND TO THE MAXIMUM EXTENT PERMITTED BY APPLICABLE LAW, THE COMPANY PROVIDES THE PRODUCT "AS-IS" AND "AS-AVAILABLE" FOR YOUR CONVENIENCE AND THE COMPANY AND ITS LICENSORS AND SUPPLIERS EXPRESSLY DISCLAIM ALL WARRANTIES AND CONDITIONS, WHETHER EXPRESSED, IMPLIED, OR STATUTORY, INCLUDING THE WARRANTIES OF MERCHANTABILITY, FITNESS FOR A PARTICULAR PURPOSE, TITLE, QUIET ENJOYMENT, ACCURACY, AND NON-INFRINGEMENT OF THIRD-PARTY RIGHTS. THE COMPANY DOES NOT GUARANTEE ANY SPECIFIC RESULTS FROM THE USE OF THE PRODUCT, OR THAT THE COMPANY WILL CONTINUE TO OFFER OR MAKE AVAILABLE THE PRODUCT FOR ANY PARTICULAR LENGTH OF TIME. THE COMPANY FURTHER DISCLAIMS ALL WARRANTIES AFTER THE EXPRESS WARRANTY PERIOD STATED ABOVE.

YOU USE THE PRODUCT AT YOUR OWN DISCRETION AND RISK. YOU WILL BE SOLELY RESPONSIBLE FOR (AND THE COMPANY DISCLAIMS) ANY AND ALL LOSS, LIABILITY, OR DAMAGES RESULTING FROM YOUR USE OF THE PRODUCT. NO ADVICE OR INFORMATION, WHETHER ORAL OR WRITTEN, OBTAINED BY YOU FROM THE COMPANY OR THROUGH ITS AUTHORIZED SERVICE PROVIDERS SHALL CREATE ANY WARRANTY.

IN NO EVENT WILL THE COMPANY'S TOTAL CUMULATIVE LIABILITY ARISING FROM OR RELATED TO THE PRODUCT, WHETHER IN CONTRACT OR TORT OR OTHERWISE EXCEED THE FEES ACTUALLY PAID BY YOU TO THE COMPANY OR ANY OF ITS AUTHORIZED RESELLERS FOR THE PRODUCT AT ISSUE IN THE LAST YEAR FROM YOUR PURCHASE. THIS LIMITATION IS CUMULATIVE AND WILL NOT BE INCREASED BY THE EXISTENCE OF MORE THAN ONE INCIDENT OR CLAIM. THE COMPANY DISCLAIMS ALL LIABILITY OF ANY KIND OF ITS LICENSORS AND SUPPLIERS. IN NO EVENT WILL THE COMPANY OR ITS LICENSORS, MANUFACTURERS, AND SUPPLIERS BE LIABLE FOR ANY INCIDENTAL, DIRECT, INDIRECT, SPECIAL, PUNITIVE, OR CONSEQUENTIAL DAMAGES (SUCH AS, BUT NOT LIMITED TO, DAMAGES FOR LOSS OF PROFITS, BUSINESS, SAVINGS, DATA, OR RECORDS) CAUSED BY THE USE, MISUSE, OR INABILITY TO USE THE PRODUCT.

Nothing in these terms shall attempt to exclude liability that cannot be excluded under applicable law. Some countries, states, or provinces do not allow the exclusion or limitation of incidental or consequential damages or allow limitations on warranties, so certain limitations or exclusions may not apply to you. This warranty gives you specific legal rights, and you may have other rights that vary from state to state or province to province. Contact your authorized retailer to determine if another warranty applies.

Hike Crew is a trademark of C&A IP Holdings LLC in the U.S.

All other products, brand names, company names, and logos are trademarks of their respective owners, used merely to identify their respective products, and are not meant to connote any sponsorship, endorsement, or approval.

Distributed by C&A Marketing, Inc., 114 Tived Lane East, Edison, NJ 08837

Made in China

© 2021. C&A IP Holdings LLC. All Rights Reserved.

GET IN TOUCH!

info@supportcbp.com

1-833-855-1816