



ATV Pail Carrier

OWNER'S MANUAL



WARNING:

Read carefully and understand all **ASSEMBLY AND OPERATION INSTRUCTIONS** before operating. Failure to follow the safety rules and other basic safety precautions may result in serious personal injury.

Model # OTF-02RMPH

Thank you very much for choosing this product! For future reference, please complete the owner's record below:

Model: _____ Purchase Date: _____

Save the receipt, warranty and these instructions. It is important that you read the entire manual to become familiar with this product before you begin using it.

This product is designed for certain applications only. The manufacturer cannot be responsible for issues arising from modification. We strongly recommend this product not be modified and/or used for any application other than that for which it was designed. If you have any questions relative to a particular application, DO NOT use the product until you have first contacted us to determine if it can or should be performed on the product.

For technical questions please call **1-218-943-6290**.

INTENDED USE

The pail carrier has a 150 lb. weight capacity and can help you carry tools, feed, dirt, debris, and so much more. Perfect for gardening, farms, lawn maintenance, food plot work.

TECHNICAL SPECIFICATIONS

Item	Description
Bucket Capacity	2 - 5 or 6 gallon buckets/pails
Weight Capacity	150 lbs.
Receiver	2" or 1-1/4"

GENERAL SAFETY RULES



WARNING: Read and understand all instructions. Failure to follow all instructions listed below may result in serious injury.



CAUTION: Do not allow persons to operate or assemble this ATV Pail Carrier until they have read this manual and have developed a thorough understanding of how the ATV Pail Carrier works.



WARNING: The warnings, cautions, and instructions discussed in this instruction manual cannot cover all possible conditions or situations that could occur. It must be understood by the operator that common sense and caution are factors which cannot be built into this product, but must be supplied by the operator.

SAVE THESE INSTRUCTIONS

WORK AREA

- **Keep work area clean**, free of clutter and well lit. Cluttered and dark work areas can cause accidents.
- **Keep children and bystanders** away while operating an ATV Pail Carrier. Distractions can cause you to lose control, so visitors should remain at a safe distance from the work area.
- **Be alert of your surroundings.** Using an ATV Pail Carrier in confined work areas may put you dangerously close to cutting tools and rotating parts.

PERSONAL SAFETY

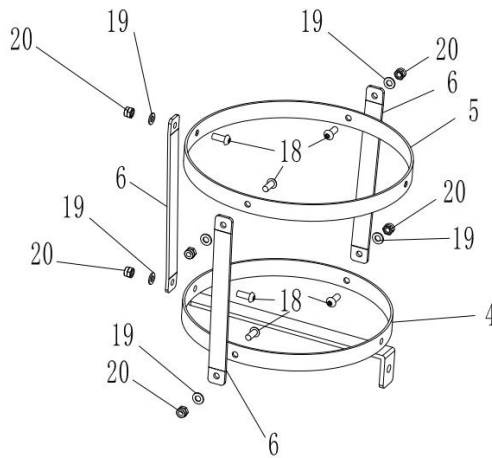
- **Stay alert**, watch what you are doing and use common sense when using an ATV Pail Carrier. Do not use an ATV Pail Carrier while you are tired or under the influence of drugs, alcohol or medication. A moment of inattention while operating may result in serious personal injury.
- **Dress properly.** Do not wear loose clothing, dangling objects, or jewelry. Keep your hair, clothing and gloves away from moving parts. Loose clothes, jewelry or long hair can be caught in moving parts.
- **Use safety apparel and equipment.** Use safety goggles or safety glasses with side shields which comply with current national standards, or when needed, a face shield. Use a dust mask if working in dusty work conditions. This applies to all persons in the work area. Also use non-skid safety shoes, hardhat, gloves, dust collection systems, and hearing protection when appropriate.

ATV Pail Carrier USE AND CARE

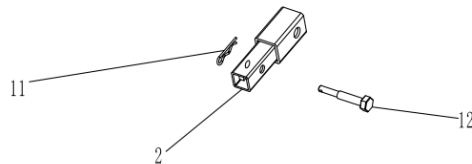
- **Do not modify the ATV Pail Carrier in any way.** Unauthorized modification may impair the function and/or safety and could affect the life of the equipment. There are specific applications for which the ATV Pail Carrier was designed.
- **Always check for damaged or worn out parts before using the ATV Pail Carrier.** Broken parts will affect the ATV Pail Carrier operation. Replace or repair damaged or worn parts immediately.
- **Do not exceed the ATV Pail Carrier load capacity.**
- **Check ATV/UTV hitch capacity. DO NOT exceed.**
- **Distribute the load evenly.** Uneven loads may cause the ATV Pail Carrier to tip, resulting in personal injury to the operator or others.
- **Use the ATV Pail Carrier on flat and level surfaces** capable of supporting the ATV Pail Carrier and its maximum load. Pulling or pushing a load on a slanted or uneven surface can result in loss of control.
- **Store idle ATV Pail Carrier.** When the ATV Pail Carrier is not in use, store it in a secure place out of the reach of children. Inspect it for good working condition prior to storage and before re-use.

ASSEMBLY

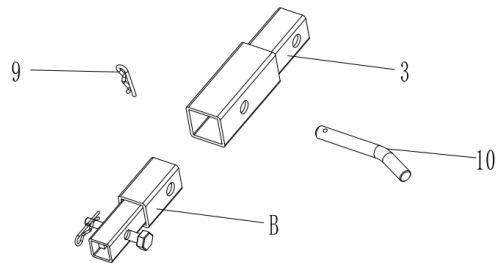
1. Attach Down Basket (#4) and Upper Basket (#5) through S-Shape Plate (#3) with Screw (#18), Flat Washer (#19) and Lock Nut (#20) as Part A. There are 2pcs of Part A.



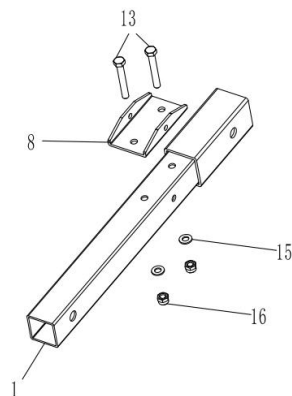
2. Install Receiver 1 (#2) with Small Clip (#11) and Bolt (#12) as Part B.



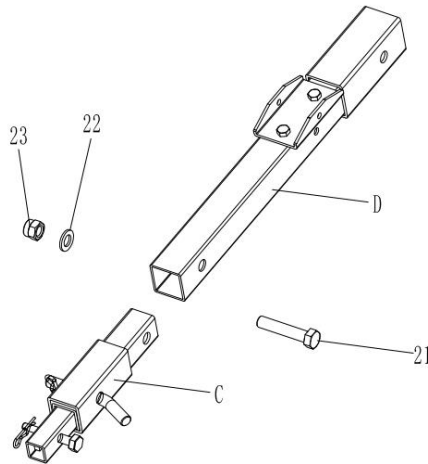
3. Attach Part B to Receiver 2 (#3) with Hitch Pin (#9) and Large Clip (#10) as Part C.



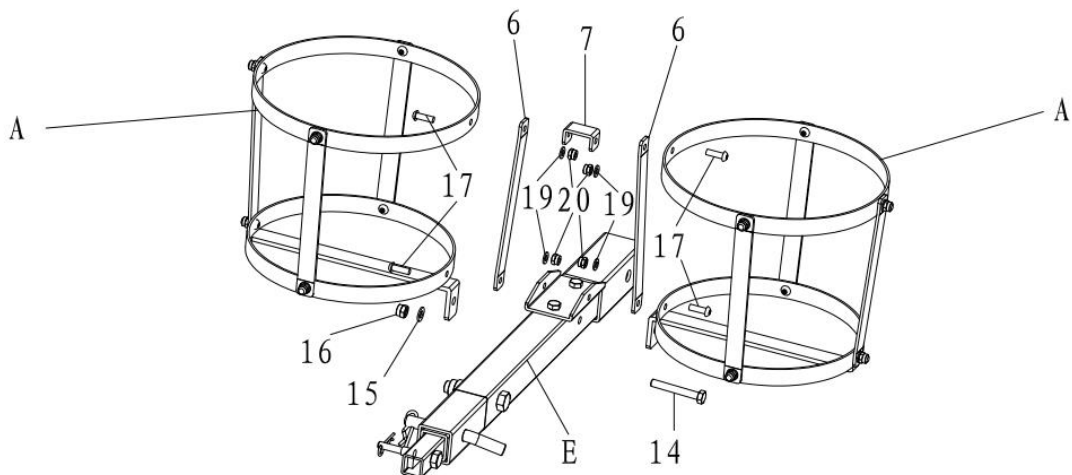
4. Install U-Shape Plate 2 (#8) to Main Frame (#1) with Bolt (13), Flat Washer (#15) and Lock Nut (#16) as Part D.



5. Attach Part C and Part D with Bolt (#21), Flat Washer (#22) and Lock Nut (#23) as Part E.



6. Install Part E and 2pcs Part A together by using 2pcs S-Shaped Plate (#6) and U-Shaped Plate 1 (#7) with Bolt (#14), Flat Washer (#15), Lock Nut (#16), Screw (#17), Flat Washer (#19) and Lock Nut (#20).



OPERATION



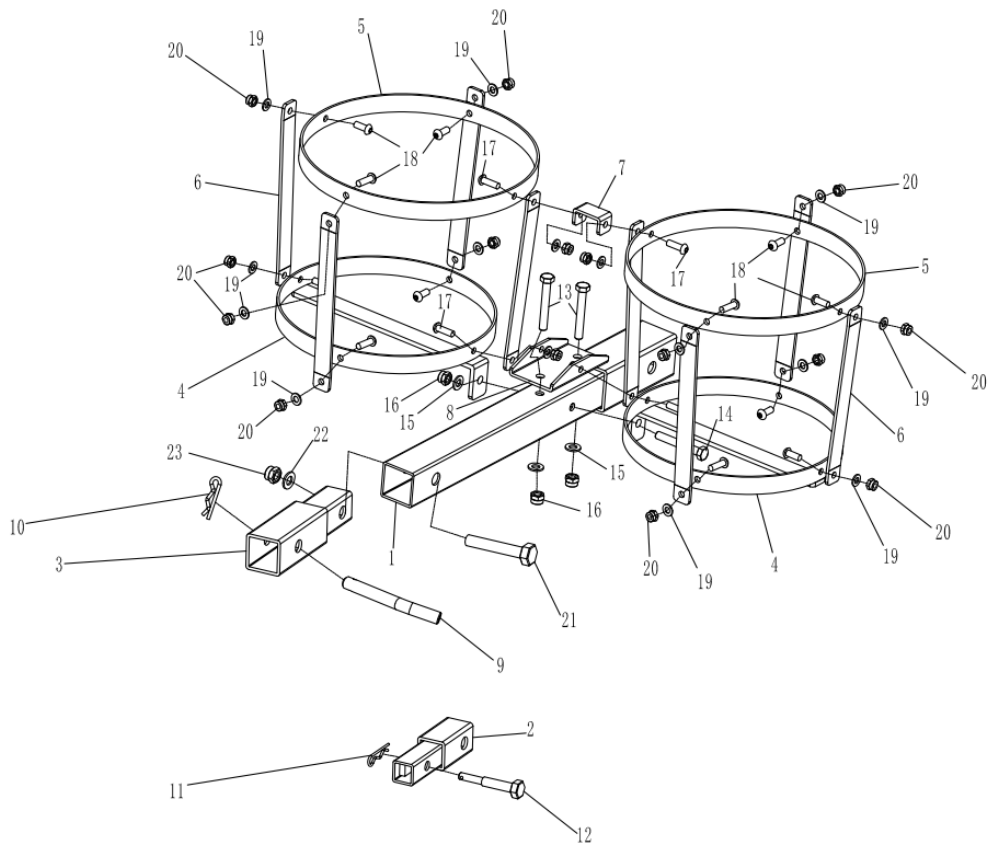
WARNING:

DO NOT HAUL ANYTHING FLAMMABLE.

MAINTENANCE

- **Maintain your ATV Pail Carrier.** It is recommended that the general condition of any ATV Pail Carrier be examined before it is used. Keep your ATV Pail Carrier in good repair by adopting a program of conscientious repair and maintenance. If any abnormal vibrations or noise occurs, have the problem corrected before further use. Have necessary repairs made by qualified service personnel.

DIAGRAM & PARTS LIST



Part#	Description	Qty.	Part#	Description	Qty.
1	Main Frame	1	13	Bolt M10x 70	2
2	Receiver 1-1/4 in	1	14	Bolt M10 x 75	1
3	Receiver 2 in	1	15	Flat Washer 10	3
4	Down Basket	2	16	Lock Nut M10	3
5	Upper Basket	2	17	Screw M8 x 25	4
6	S-Shape Plate	8	18	Screw M8 x 20	12
7	U-Shape Plate 1	1	19	Flat Washer 8	16
8	U-Shape Plate 2	1	20	Lock Nut M8	16
9	Hitch Pin Φ 16	1	21	Bolt M16 x 70	1
10	Larch Clip Φ 4.5	1	22	Flat Washer 16	1
11	Small Clip Φ 2.8	1	23	Lock Nut M16	1
12	Bolt M12 x 100	1			

For replacement parts and technical questions, please call **1-218-943-6290**.

WARRANTY

One-year limited parts warranty



Outdoor Tuff
PO BOX 155
Miltona, MN 56354

MADE IN CHINA