



L I Q U I D S T O R A G E T A N K S



P R O T E C T W H A T ' S I N S I D E A N D O U T S I D E



Focused on industry solutions. Norwesco has applied its engineering innovation and flawless manufacturing execution to products that serve a wide variety of industries, sectors and jobs. These icons will help guide you to the right products for the right job.

NORWESCO PRODUCTS. DESIGNED WITH YOUR BUSINESS IN MIND.

At Norwesco, all of our tanks are designed with our customers in mind. Made of proprietary resin, using superior molds, all our tanks are rugged, impact and corrosion resistant with no seams or welds. They are available in a variety of specific gravity ratings to meet specific usage in any industry.

The industry symbols shown here appear on each product page throughout the brochure to note the industries where that product is most likely to be used.



AGRICULTURE

- Crop Production
- Livestock Production
- Fertilizer Handling & Bulk Storage
- Pesticide Storage & Application
- DEF (Diesel Exhaust Fluid) Storage



CONSTRUCTION

- Road & Infrastructure
- Residential & Commercial
- Stormwater Control & Remediation
- DEF (Diesel Exhaust Fluid) Storage
- Municipal Maintenance



INDUSTRY & MANUFACTURING

- In-Plant Storage & Application
- Process Equipment
- Chemical Storage
- Car Washes & Pressure Washing
- Day Tanks
- Food & Beverage Processing



MIXING & FILLING

- Small & Large Batching
- Complete Drainage Applications
- Application Tanks
- Process Equipment



STORAGE

- UV Resistant Outside Storage
- Indoor & Small Access Locations
- Potable Water
- NSF61 Standards
- Non-Potable Water & Chemical



WATER

- Potable & Non-Potable Water Storage
- Rainwater Collection
- Domestic Water Storage & Hauling
- Camping, Seasonal & Off-Grid Properties
- Water Processing & Treatment
- Fire Protection Systems



SPRAYING

- Pesticide Application
- Fertilizer Application
- Tender Units
- Roadside & Right of Way Control
- De-icing & Dust Control
- Mobile Pressure Washing



CHEMICAL HANDLING

- Containment Solutions
- Chemical Storage
- Chemical Transportation
- Day Tanks
- Process Tanks



TRANSPORTATION

- Commercial Hauling
- Fertilizer & Water Hauling
- Residential & Home Water Hauling



PEST CONTROL

- Insect & Pest Control
- Weed Control
- Lawn & Turf Management



HYDROPONICS

- Indoors Storage & Application
- Process Equipment
- Chemical Storage
- Doorway Access Tanks



RESOURCE MANAGEMENT

- Oil & Gas
- Forestry
- Mining
- Site Maintenance

TABLE OF CONTENTS

- Vertical Storage Tanks 8
- Water Storage Tanks 12
- Cone Bottom Tanks 16
- Transport Leg Tanks 20
- Total Drain Leg Tanks 22
- Flat Bottom Tanks 22
- Pick-Up Truck Tanks 23
- Specialty Sphere Tanks 23
- Applicator Tanks 24
- Inductor Tanks 25
- Free Standing Tanks 26
- Rectangular Utility Tanks 27
- Containment Basins 28
- Chemical Injection Systems 28
- Tank Lids 29
- Bulkhead Fittings 30
- Bolted Fittings 31
- Map of Plant Locations 32
- FAQs 34
- Warranty 35

We are #1. Norwesco is the world's largest rotational molder. We have the most plants and machines, and the highest number of employees. And we process more pounds of resin than anyone else.



NORWESCO LIQUID STORAGE TANKS. ALL CONTAIN A RICH HISTORY OF EXCELLENCE.

In 1939, Norwesco Plastics was born. When the popularity of rotomolded tanks took off in the 1970s, Norwesco was an early adopter and leader of the rotational molding process.

Since then, we have continued providing customer-focused designs with a true commitment to high quality rotomolded tanks. As a result of our deep expertise and longevity in the business, we have become the leaders in resin developments and efficient molding.

There is no "roto-molding course" you can take. It's learned on the job and passed on from one person to another. We have many people who have been with us 20, 30, 40 years. At all levels of the company we have people who are 2nd and 3rd generations of a family to work for Norwesco.

That is key to our understanding of the rotomolding process and producing quality products each and every day.

A photo from the 80s of Jim Nordgaard standing proudly among tanks made in Sheldon, Iowa. 40 years later, Jim's son, Lee manages our Sheldon plant and sits in the same office his dad once used.



The highest standards. At Norwesco we strive to make the best tank for every application. Our stringent quality control program is designed specifically for each of our plants and the products they make. We offer an array of tanks that have been tested and certified by associations such as NSF and CSA to bear their marks.

NORWESCO PRODUCTS. ALL SHARE THE SAME EXCEPTIONAL DNA.

Regardless of size or application, all of our tanks share key features that set Norwesco tanks above all others.

Product features include:

- One-piece construction with no seams or welds
- Available in a variety of specific gravity ratings to meet any application
- Full replacement warranty
- The highest strength to weight ratio in the industry
- Superior mold design that yields the required tank strength without using unnecessary resin
- Proprietary resins that produce rugged, impact resistant, corrosion resistant products
- Resins approved by the FDA for use with food grade items and potable water

What do our specific gravity ratings mean?

Specific gravity (SG) is the relative weight of a liquid compared to the weight of the same volume of water. Water will always have a specific gravity of 1.0 while liquids heavier than water will have a specific gravity greater than 1.0.

Specific gravity of a liquid will always be the same regardless of the unit of measures used to describe how “heavy” a liquid is. So while liquid nitrogen fertilizer (UAN 28-0-0) weighs 10.65 lb/US gallon, 12.78 lb/Imperial gallon, and 1.28 kg/litre — all of those work out to a specific gravity of 1.28. That is why we use specific gravity to rate what weight of liquids our tanks are designed to work with. All of our tanks have one of the following specific gravity ratings when used in their designed application:

WATER ONLY – 1.1 SG

These tanks will be marked “water only” – 3 year full replacement warranty

PREMIUM WEIGHT – 1.5 SG

These tanks are white in color – 3 year full replacement warranty

HEAVY DUTY – 1.9 SG

These tanks are blue in color – 5 year full replacement warranty





CONSTRUCTION



INDUSTRY & MANUFACTURING



AGRICULTURE



STORAGE



WATER



HYDROPONICS



RESOURCE MANAGEMENT

NORWESCO VERTICAL STORAGE TANKS. THE INDUSTRY GOLD STANDARD.

Vertical Tanks are designed for stationary storage in the industry's widest variety of capacities, sizes, and specific gravity ratings.

- 10 to 20,000 gallons
- Premium Weight tanks are white and made to a specific gravity rating of 1.5
- Heavy Duty tanks are blue and made to a specific gravity rating of 1.9
- Vertical Tanks come standard with an outlet fitting and a vented lid
- UV-15 stabilized resin provides best-in-class resistance to ultraviolet light degradation
- Optimum balance of low temperature toughness, creep resistance, stiffness, and resistance to environmental stress cracking



VERTICAL STORAGE TANKS

GALLON CAPACITY	DIAMETER	OVERALL HEIGHT	PREMIUM 1.5 WHITE	HEAVY DUTY 1.9 BLUE
10	12"	26"	44844	—
20	16"	28"	44846	—
22	20"	20"	43608	—
25	18"	29"	41867	—
40	18"	42"	44848	—
50	18"	53"	41865	—
65	23"	43"	45192	—
75	23"	49"	41863	—
100	28"	43"	41861	—
105	23"	63"	40803	—
120	28"	54"	45868	—
120	38"	31"	40318	—
130	32"	46"	44102	—
140	25"	73"	45870	—
150	30"	56"	41859	—
160	28"	69"	44536	—
165	31"	56"	40281	—
175	31"	60"	45872	—
200	30"	72"	41856	—
200	35"	59"	41518	—
210	32"	67"	47401	—
220	42"	44"	40320	—
225	31"	77"	44538	—
250	30"	89"	41854	—
265	31"	91"	45875	—
300	35"	79"	40213	—
300	42"	58"	42882	—
305	46"	50"	40302	—
310	32"	94"	43625	—
500	48"	73"	40148	40150
525	46"	78"	41490	—
550	67"	44"	40023	—
750	48"	103"	40606	—
850	48"	118"	42214	—
1000	64"	80"	40152	40154
1000	72"	66"	44111	—
1050	48"	134"	44818	44820
1100	87"	53"	40070	40081
1250	60"	114"	44356	44358

GALLON CAPACITY	DIAMETER	OVERALL HEIGHT	PREMIUM 1.5 WHITE	HEAVY DUTY 1.9 BLUE
1295 G	84"	64"	44968	44970
1500	64"	116"	40144	40146
1500	93"	60"	41505	—
1550	87"	67"	40235	40236
1700	87"	74"	40010	40012
2000	64"	152"	47109	47564
2000	90"	84"	44125	44127
2100	87"	89"	40178	40241
2100	102"	69"	41399	—
2500	95"	91"	40051	40052
2500	102"	79"	42382	42384
3000	95"	109"	40754	40755
3000	95"	109"	43092	43093
3000	102"	93"	43136	43138
3450	96"	120"	44668	44670
4000	102"	125"	40312	—
4200	102"	131"	41403	—
4995	142"	88"	44822	44824
5000	102"	152"	40164	40166
5000	119"	112"	45355	45357
5000	141"	86"	40941	43833
6000	102"	182"	40226	40233
6100	119"	140"	40659	40661
6500	119"	150"	40224	40232
6500	120"	147"	42315	42317
7800	119"	176"	40663	40665
8400	120"	187"	44395	44397
9000	141"	146"	43618	43620
10000	141"	160"	43128	43130
10500	130"	202"	47638	47640
11000	144"	167"	44009	44011
12000	141"	193"	43919	43921
13000	144"	198"	44015	44017
15000	165"	186"	43821	43823
15500	141"	244"	43941	43943
20000	165"	242"	43825	43827

G = Gusset Top

PLEASE NOTE: Refer to <https://www.norwesco.com/products/above-ground-tanks/vertical-storage> for more specifications and tank drawings.



Certifications are met. For customers and applications who require extra assurance, our plants hold key certifications such as NSF61 and CSA and can make tanks marked with those standards.

**NORWESCO VERTICAL
STORAGE TANKS.
THE STRONG, SILENT TYPE.**





STORAGE



WATER



HYDROPONICS

NORWESCO ABOVE GROUND WATER STORAGE TANKS. PROTECT OUR MOST VALUABLE RESOURCE.

Norwesco Water Tanks are manufactured using resins that have FDA approval for the safe storage of potable water. The black or green color limits light penetration, which reduces the growth of water-borne algae. These tanks are rated to a specific gravity of 1.1, which means they are for **WATER STORAGE ONLY!** They should not be used for chemicals, fertilizers or any other product. Where applicable, the tanks will have NSF61 approval.

- Available in sizes from 40 to 15,500 gallons
- Available in black and three variations of green
- In addition to outlet fittings, each water storage tank comes with an overflow fitting installed near the top of the tank
- Ideal for rain collection, drinking water storage, hydroponic growing operations, and fire suppression water storage



PLEASE NOTE: Refer to <https://www.norwesco.com/products/above-ground-tanks/vertical-black-green> for more specifications and tank drawings.



ABOVE GROUND WATER ONLY STORAGE TANKS

GALLON CAPACITY	DIAMETER	OVERALL HEIGHT	WATER 1.1 BLACK	WATER 1.1 GREEN	WATER 1.1 DARK GREEN	WATER 1.1 CA GREEN
40	18"	42"	41536	41537	—	—
75	23"	50"	41457	41458	—	—
100	23"	63"	41464	41465	—	—
120	38"	31"	43858	—	43860	43862
150	30"	56"	41470	41471	—	—
165	31"	56"	43864	—	43866	43868
175	30"	64"	41474	—	—	—
200	30"	72"	44107	45120	—	44109
220	42"	44"	43870	—	43872	43874
250	35"	68"	41481	41482	—	—
300	35"	89"	41530	41531	—	—
300	46"	50"	41532	41533	—	—
305	46"	50"	40702	—	40863	41362
500	48"	73"	43101	—	43105	43103
525	46"	78"	41491	41539	—	—
550	67"	44"	40703	—	40864	41364
600	64"	50"	43800	—	43802	—
1000	64"	80"	40892	41501	41686	43878
1000	72"	66"	44113	—	—	44115
1075	87"	51"	43804	—	43806	—
1100	87"	53"	40704	—	40865	41365
1350	71"	88"	40860	—	40858	—
1500	93"	60"	41506	41508	—	—
1525	93"	62"	43808	—	43810	—
1550	87"	67"	40627	—	40866	41368
2000	90"	84"	44129	—	44131	—
2100	87"	89"	44411	—	44413	44415
2450	96"	87"	44656	—	44658	—
2500	95"	91"	40631	—	40867	41370
2500	98"	101"	42960	—	45397	—
2500	102"	79"	42040	—	44133	42039
2550	93"	95"	43812	—	43814	—
3000	95"	109"	40635	—	40868	41372
3000	102"	93"	43140	—	44135	42041
3450	96"	120"	44664	—	44666	—
5000	102"	152"	40641	—	40870	41375
5000	119"	112"	42044	—	—	42043
5000	141"	86"	40943	—	—	41377
6500	119"	150"	43876	—	43880	—
6600	144"	101"	—	—	44119	—
7750	144"	122"	—	—	44123	—
10000	141"	160"	43132	—	41379	—
11000	144"	167"	44013	—	44023	—
12000	141"	193"	44810	—	44812	—
15500	141"	244"	44814	—	44816	—

True expertise matters. Through longevity and leadership, continual learning and a deep commitment to the polyethylene tank industry, we have proven year-after-year how to make the most durable tanks for our customers.



NORWESCO ABOVE GROUND STORAGE TANKS.
A CRITICAL COMPONENT IN THE FARMING ECOSYSTEM.





MIX & FILL



INDUSTRY & MANUFACTURING



AGRICULTURE



CHEMICAL HANDLING



HYDROPONICS

CONE BOTTOM TANKS. FAST AND COMPLETE DRAINING.

Cone Bottom Tanks come in a variety of slopes. Sizes of 55 to 10,000 gallons have steel stand options sold separately. Sizes of 125 to 3000 gallons are available in a complete tank and polyethylene stand configuration.

STEEL STANDS

- Structural steel construction with powder coated black finish
- Engineered to provide proper support for the conical bottom
- Sold separately

POLY STANDS

- Rugged polyethylene construction
- Ideal for highly corrosive environments
- Molded to fit securely to the tank
- Cone Bottoms in polyethylene stands are sold as a complete unit



500 CONE BOTTOM / POLYETHYLENE STAND

CONE BOTTOM TANKS

GALLON CAPACITY	SLOPE	DIAMETER	TANK HEIGHT	PREMIUM 1.5 WHITE	HEAVY DUTY 1.9 BLUE	BOTTOM CLEARANCE	PART NO.
55	15°	23"	39"	41450	—	11"	41477
100	15°	23"	63"	41461	—	11"	41477
150	15°	36"	43"	41467	—	13"	41486
160	45°	36"	52"	43845	—	15"	63932
200	15°	36"	55"	41476	—	13"	41486
250	15°	36"	67"	41478	—	13"	41486
300	15°	36"	80"	41484	—	13"	41486
300	45°	48"	56"	43848	—	11"	63933
350	45°	52"	58"	41485	—	13"	41493
500	45°	48"	85"	43850	—	11"	63933
500	45°	52"	82"	41489	—	13"	41493
550	20°	72"	47"	44647	—	—	—
750	20°	72"	56"	40811	—	—	—
750	45°	52"	105"	41495	—	13"	41493
1000	45°	72"	89"	43852	—	11"	63934
1020	15°	91"	53"	44341	44420	10"	64090
1050	20°	72"	75"	40356	—	—	—
1320	15°	91"	64"	44339	44422	10"	64090
1500	45°	72"	118"	43854	—	11"	63934
1600	30°	88"	84"	40817	40819	—	—
1720	15°	91"	78"	44337	44424	10"	64090
2500	15°	91"	108"	43065	43067	10"	64090
2500	30°	96"	105"	40066	40129	21"	64076
3000	15°	91"	120"	45141	45242	10"	64090
3000	30°	96"	123"	40170	40172	21"	64076
4950	15°	102"	159"	45381	45383	13"	62473*
5500	30°	119"	148"	40549	40316	14"	60358
6000	15°	102"	195"	40931	40933	13"	62473*
7500	30°	141"	149"	40551	40409	26"	64070
10000	15°	142"	173"	44459	44461	11"	64113
10000	30°	141"	190"	44103	44105	26"	64070

PLEASE NOTE: Tank Height plus Bottom Clearance equals the total height of tank sitting in its steel stand.
*There is also a polyethylene stand option (#40143) for the 4950 and 6000.

STEEL STANDS

CONE BOTTOM TANKS IN POLYETHYLENE STANDS

GALLON CAPACITY	SLOPE	DIAMETER	OVERALL HEIGHT	BOTTOM CLEARANCE †	PREMIUM 1.5 WHITE	HEAVY DUTY 1.9 BLUE
125 with Stand	15°	48"	41"	12"	43161	—
175 with Stand	30°	43"	49"	9"	60113	—
300 with Stand	30°	49"	61"	9"	62343	—
310 with Stand	30°	43"	72"	9"	62441	—
500 with Stand	30°	49"	87"	9"	40289	—
550 with Stand	20°	73"	57"	11"	44649	—
750 with Stand	20°	73"	67"	11"	40809	—
1050 with Stand	20°	73"	86"	11"	40359	—
1600 with Stand	30°	89"	96"	11"	40813	40815
2500 with Stand	30°	99"	116"	10"	40672	40674
3000 with Stand	30°	99"	134"	10"	40797	40799

† Distance from bottom of cone to ground

PLEASE NOTE: Refer to <https://www.norwesco.com/products/above-ground-tanks/cone-bottom> for more specifications and tank drawings.



1600 CONE BOTTOM /POLYETHYLENE STAND



3000 CONE BOTTOM / STEEL STAND

Small town focus – Norwesco is committed to the growth and stability of small towns and cities. As a result, we have plants located in over 50 small towns across the United States and Canada employing hundreds of skilled and dedicated workers and contributing to their communities.



**NORWESCO ELLIPTICAL
LEG TANKS.
BEHIND THE SCENES
PERFORMANCE.**





CONSTRUCTION



WATER



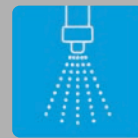
AGRICULTURE



TRANSPORTATION



RESOURCE MANAGEMENT



SPRAYING

TRANSPORT LEG TANKS. REDUCE SLOSHING WHEN ON THE MOVE.

Norwesco's Horizontal and Elliptical Transport Leg Tanks combine to make the broadest range of sizes in the industry — from 35 to 6025 gallons. Designed specifically for heavy duty transport applications, these tanks secured with our proven band system provide the safest, most secure, longest lifespan tanks available.

- Available in 2 styles: Horizontal (equal width and height) and Elliptical (lower centre of gravity to capacity ratio)
- Norwesco pioneered what remains the industry's most secure method of securing transport tanks to decks. More importantly, bands control the inherent flex of polyethylene and maintain the tank's shape...meaning a longer in-service lifespan.
- Molded-in baffles reduce liquid surge in moving loads. Lids are not located at the ends of the tank where they are prone to being blown out.



325 HORIZONTAL LEG / BANDS



1025 HORIZONTAL LEG / BANDS



2035 ELLIPTICAL LEG / BANDS

TRANSPORT LEG TANKS

GALLON CAPACITY	STYLE	DIAMETER	OVERALL HEIGHT	LENGTH	PREMIUM 1.5		HEAVY DUTY 1.9		# OF BANDS	PART NO.
					WHITE	BLACK	BLUE	BLACK		
35	Horizontal	20"	23"	29"	45223				2	60520
55	Horizontal	23"	26"	34"	41873				2	61745
65	Horizontal	23"	26"	43"	45191				2	61745
125	Horizontal	32"	35"	41"	40298				2	61744
135	Elliptical	36"	26"	56"	44804				2	64164
150	Horizontal	34"	36"	43"	41468					
225	Horizontal	38"	41"	49"	40299				2	60478
235	Elliptical	40"	32"	66"	44806				2	64165
325	Horizontal	38"	43"	68"	40217				2	60478
335	Elliptical	48"	33"	71"	42339				2	63546
425	Horizontal	49"	54"	60"	42016				2	60057
525	Horizontal	49"	54"	71"	40181			40193	2	60057
535	Elliptical	57"	39"	80"	42353				2	63547
725	Horizontal	49"	54"	101"	40180			40194	3	60057
925	Horizontal	62"	65"	80"	45209				2	62852
925 *	Sumped	62"	69"	80"	45210				2	62852
1025	Horizontal	49"	54"	139"	40089			40131	4	60057
1035	Elliptical	79"	54"	89"	40191			40192	3	60325
1235	Elliptical	66"	53"	128"	40239				4	60477
1325	Horizontal	66"	70"	99"	41875			41877	3	63282
1335	Elliptical	66"	55"	126"	42927			42929	3	63642
1625	Horizontal	63"	68"	139"	40026			40133	4	60079
1635	Elliptical	71"	58"	142"	40387	40602		40388 41890	4	60586
1800 +	Horizontal	62"	68"	146"	42990				4	62852
1800 +*	Sumped	62"	72"	146"	42992				4	62852
2035	Elliptical	84"	56"	142"	40618	40621		40623 40775	4	62079
2635	Elliptical	90"	72"	140"	40547	40751		40283 41294	4	60353
2650 x	Elliptical	88"	82"	122"	45360	45364		45362 45366	3	63260
3135	Elliptical	88"	80"	150"	40686	40853		40688 41417	4	63620
3250 x	Elliptical	88"	82"	152"	44597	44601		44599 44603	4	63620
3725	Horizontal	92"	97"	145"	44047			44049	4	63284
4035	Elliptical	92"	75"	192"	41267	45394		41269 42011	4	62832
5025	Horizontal	92"	96"	190"	41879			41881	5	63284
6025 x	Horizontal	99"	103"	193"	44314			44316	5	64085

* A hole is required in the mounting surface for the tank sump to protrude through.
+ Two compartment tanks consist of two separate tanks, one reinforcing centre "donut," and hardware to assemble into one unit. Unit ships unassembled.
x Tank has an interior wall-style baffle.

PLEASE NOTE: Refer to <https://www.norwesco.com/products/above-ground-tanks/elliptical-leg> and <https://www.norwesco.com/products/above-ground-tanks/horizontal-leg> for more specifications and tank drawings.



Horizontal



Elliptical



CONSTRUCTION



WATER



AGRICULTURE



TRANSPORTATION



RESOURCE MANAGEMENT



AGRICULTURE



WATER



SPRAYING



TRANSPORTATION



PEST CONTROL

TOTAL DRAIN LEG TANKS. ENGINEERED FOR SAFE USAGE.

Norwesco's Total Drain Leg Tanks are the industry's best way to achieve total drainage in a transport tank. These tanks are built with a bottom that is sloped both from end to end, and side to side. This creates total drainage that is much faster and less prone to vortexing, than tanks with sump options or tanks that are sloped in only one direction. Whether avoiding cross-contamination between liquids or assuring total transfer of a load, Total Drain Tanks give complete confidence that the tank will be 100% empty.

GALLON CAPACITY	WIDTH	OVERALL HEIGHT	LENGTH	PREMIUM 1.5 WHITE	HEAVY DUTY 1.9 BLUE	BANDS REQUIRED	
						SHORT	LONG
710	47"	57"	104"	40655	40657	3 x 60584	—
1010	47"	58"	140"	40393	40395	2 x 60584	2 x 60585
1315	66"	60"	126"	42925	42926	3 x 63642	—
1610	69"	63"	140"	40806	40808	4 x 62434	—
2010	69"	74"	140"	43651	43652	4 x 63846	—
2610	90"	79"	140"	—	41383	2 x 63044	2 x 63045
3210	92"	75"	178"	—	40824	2 x 62347	2 x 62348
4010	92"	87"	192"	—	45771	—	4 x 62832



1010 TOTAL DRAIN LEG TANK WITH TWO SHORT BANDS AND TWO LONG BANDS

NORWESCO TOTAL DRAIN LEG TANK BANDS. RETAIN TANK SHAPE AND INTEGRITY.

In addition to securing tanks in place, these bands extend the tank's lifespan by preventing excessive tank flex during fill and empty cycles. Due to the end-to-end slope of these tanks, some will require a combination of short and long bands as shown in the above table.

FLAT BOTTOM HAULING TANKS. NO JOB TOO BIG.

The Flat Bottom Hauling Tank is ideal for use on flatbed or drop deck trailers. Large ribs eliminate the need for steel support bands and assist with reducing the sloshing of fluid.

GALLON CAPACITY	WIDTH	OVERALL HEIGHT	LENGTH	WATER 1.1 WHITE	PREMIUM 1.5 WHITE	HEAVY DUTY 1.9 BLUE
1250	81"	38"	130"	40756		
1275	84"	36"	126"	43011		
1500	81"	44"	130"	41392		
1600	84"	42"	126"	43013		
2400	90"	53"	150"	40912		
4200	96"	85"	180"	—	44972	44974



4200 FLAT BOTTOM

PICK-UP TRUCK TANKS. EASY TO MOVE AND FITS ANYWHERE.

Designed to fit full-size pickups, the 325 and 425 sizes have low profiles for better rear vision. The 210 fits both full-size and small pickup trucks. All of them feature fill openings offset to the side of the tank for safe and easy access. The 200 and 300 Space Saver Tanks have flat surfaces on top suitable for mounting pumps or hose reels.



300 SPACE SAVER

GALLON CAPACITY	TOP WIDTH OR DIAMETER	BOTTOM WIDTH OR DIAMETER	OVERALL HEIGHT	PREMIUM 1.5 WHITE
210	60"/51"	48"/39"	29"	40300
305 Rectangular	60"	48"	30"	44808
325	62"	49"	33"	40160
425	65"	49"	39"	40102
200 Space Saver	69"/28"	47"/28"	40"	43112
300 Space Saver	69"/41"	47"/41"	40"	43119



PLEASE NOTE: Refer to <https://www.norwesco.com/products/above-ground-tanks/pickup-truck> for more specifications and tank drawings.



SPECIALTY SPHERE TANKS. FOR USE ON TRAILERS.

The Sphere Tanks are most often used on trailers that are specifically designed with the tank to allow for complete drainage and a tight turning radius.

GALLON CAPACITY	DIAMETER	OVERALL HEIGHT	PREMIUM 1.5 WHITE	HEAVY DUTY 1.9 BLUE
525	62"	64"	44878	44879
1000	78"	82"	43672	41440
1100	78"	86"	44347	44346

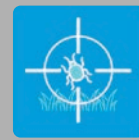




AGRICULTURE



SPRAYING



PEST CONTROL



AGRICULTURE



INDUSTRY & MANUFACTURING



MIX & FILL



SPRAYING



CHEMICAL HANDLING

APPLICATOR TANKS. PROVEN QUALITY. HUGE SELECTION.

Norwesco Applicator Tanks are designed specifically for sprayers and other mobile application equipment. To make them easier to clean and drain better, these tanks do not have molded in legs. Every size has a sump that includes either one or two fittings depending on the size of the tank. Most models have a matching saddle option for mounting the tank.

GALLON CAPACITY	TANK STYLE	WIDTH	OVERALL HEIGHT INCLUDING SUMP	LENGTH	SUMP DEPTH	PREMIUM 1.5 WHITE	SADDLE
14	Spot Sprayer	14"	15"	31"	—	45115	
20	Cylindrical	15"	18"	31"	½"	61737	
25	Spot Sprayer	18"	18"	36"	—	62080	
30	Cylindrical	23"	26"	21"	½"	41799	60321
55	Cylindrical	23"	27"	34"	½"	45193	60303
70	Cylindrical	23"	26"	44"	½"	44237	60303
85	Cylindrical	23"	26"	52"	¾"	45105	60303
100	Cylindrical	24"	28"	57"	1"	60204	
110	Cylindrical	30"	34"	41"	1½"	45053	60315
150	Cylindrical	30"	33"	58"	½"	40648	60315
150	Cylindrical	32"	35"	46"	1"	45117	60315
200	Cylindrical	32"	35"	62"	1¼"	45059	63019
200	Cylindrical	38"	42"	47"	1¼"	45061	63020
200	Slim line	24"	48"	61"	¾"	41305	
200	Slim line	31"	46"	48"	¾"	40780	
200	Elliptical	40"	30"	66"	¾"	41252	63015
300	Cylindrical	38"	41"	68"	½"	40135	63021
300	Elliptical	48"	36"	70"	3"	40327	63016
300	Offset**	48"	33"	70"	1¾"	45746	63016
400	Cylindrical	42"	45"	74"	½"	40137	63022
500	Cylindrical	48"	51"	75"	½"	40274	63023
500	Elliptical	57"	44"	82"	2"	40328	63018
500	Offset**	57"	39"	82"	1¾"	45750	63018
600	Elliptical	64"	44"	84"	2½"	43218	
750	Elliptical	69"	48"	88"	3"	40329	63071
1000	Elliptical	78"	55"	90"	3"	40330	63072
1600 *	Elliptical	78"	54"	138"	2½"	47972	

* Includes 1 stainless steel baffle.
** Offset Style Tanks are elliptical in shape with the lid offset to one side for easier access.



SPOT SPRAYER



CYLINDRICAL



ELLIPTICAL

INDUCTOR TANKS. IDEAL FOR MIXING AND DISPENSING.



Inductor Tanks are ideal for mixing and dispensing applications. The conical bottom ensures complete drainage. Steel support stands (sold separately) are available for round inductor tanks. The smaller rectangular tanks have threaded inserts for mounting.

GALLON CAPACITY	DIAMETER	TANK HEIGHT	OVERALL HEIGHT IN STAND	FILL OPENING	PREMIUM 1.5 WHITE	STAND
15	19"	23"	38"	8"	60214	60313
15	24"	21"	36"	16"	42064	63397
30	24"	28"	43"	16"	42065	63397
35	23"	29"	44"	8"	45098	65517
40 *	27"	34"	43"	16"	44978	64229
60	24"	42"	56"	16"	42066	63397
60	31"	32"	47"	16"	62205	62204
65 *	27"	43"	52"	16"	44979	64229
80	32"	37"	—	16"	47190	—

* 40 and 65 gal tanks have a molded-in outlet with 2" MPT

GALLON CAPACITY	WIDTH	OVERALL HEIGHT	LENGTH	PREMIUM 1.5 WHITE
5	11"	18"	11"	42321
10	13"	21"	13"	42351
12	14"	15"	18"	60521

THE HANDLER

SAFE. FAST. EFFICIENT.

The Handler is the world's premier chemical management system for filling agricultural sprayers. The Handler is also the best selling chemical management system. There are 20 models of the Handler to choose from. The Handler is often paired with a variety of the Norwesco products you see here. Find out which Handler is right for you and where to purchase one.

The Handler is proudly owned and manufactured by Norwesco. Visit www.thehandler.com





CONSTRUCTION



INDUSTRY & MANUFACTURING



STORAGE



WATER



HYDROPONICS



CONSTRUCTION



INDUSTRY & MANUFACTURING



AGRICULTURE



TRANSPORTATION

FREE STANDING TANKS. FIT THROUGH DOORWAYS WITH EASE.

These tanks have been specifically designed with residential and commercial applications in mind. The dimensions of the tanks allow them to fit through a conventional doorway. The molded in center gap ties the two largest tank walls together, providing structural integrity that eliminates the need for frames or support.

GALLON CAPACITY	WIDTH	OVERALL HEIGHT	LENGTH	WATER 1.1 WHITE	PREMIUM 1.5 WHITE
100 Slender	22"	45"	38"	—	44800
150	18"	53"	50"	—	45716
250	25"	54"	59"	—	45722
250	29"	44"	62"	—	42337
300	25"	65"	59"	44976	44960
300	29"	50"	66"	—	44330
400	29"	70"	66"	44361*	43856
500	31"	70"	74"	—	43616
600 Vertical Ribbed	35"	84"	58"	44655	—
750	35"	85"	82"	—	44310
1000	40"	89"	92"	—	44045

* Dark green



RECTANGULAR UTILITY TANKS. 4 VERSATILE AND COMPACT STYLES.

Designed specifically to maximize liquid storage in tight spaces, these rectangular tanks are suitable for both stationary and mobile applications. They are commonly installed in trucks or trailers for uses like lawn care, construction, trades, mobile washing, safety water, motorsports, and outdoor recreation.

Rectangular Utility Tanks come in 4 different styles to fit any application:

- **PCO** - Molded-in legs, a curved bottom for drainage. Smooth or ribbed.
- **Flat Bottom** - Full rectangular, flat bottom, several fitting locations.
- **Loaf** - More pronounced structural wall ribbing.
- **Low Profile** - Lower versions of the Loaf style tanks.

GALLON CAPACITY	STYLE	WIDTH	OVERALL HEIGHT	LENGTH	PREMIUM 1.5
7	Flat Bottom	9"	18"	14"	44852
16	Flat Bottom	14"	17"	20"	44853
20	Flat Bottom	11"	34"	15"	44854
26	Flat Bottom	18"	20"	25"	43835
30	PCO	19"	23"	25"	41254
35	Flat Bottom	15"	43"	15"	44873
45	Flat Bottom	18"	22"	38"	43837
50	PCO	19"	22"	38"	40664
50	PCO Ribbed	19"	23"	38"	42834
50 *	Flat Bottom	19"	23"	38"	42341
50	Loaf	20"	16"	48"	44962
50	Loaf	27"	17"	41"	43610
52	Flat Bottom	24"	15"	43"	43839
55	Flat Bottom	18"	44"	18"	44855
68	Flat Bottom	27"	17"	42"	43841
100	PCO	30"	28"	38"	40668
100	PCO Ribbed	30"	30"	38"	42835
100 *	Flat Bottom	27"	29"	43"	42343
100	Loaf	20"	32"	48"	44963
100	Loaf	27"	30"	41"	43611
110	Low Profile	35"	18"	48"	42349
150	PCO	36"	28"	48"	40669
150	PCO Ribbed	37"	29"	48"	42836
150 *	Flat Bottom	36"	29"	48"	42345
200	PCO	36"	37"	48"	41413
200	PCO Ribbed	37"	37"	48"	42837
200 *	Flat Bottom	36"	36"	48"	42347
200	Low Profile	48"	20"	60"	44875
200	Loaf	36"	29"	48"	43612
200	Loaf	40"	31"	48"	45380
250	Rectangular	48"	19"	68"	42492
300	PCO	36"	37"	69"	41381
300	Low Profile	56"	19"	95"	44233
300	Loaf	42"	30"	63"	43613
500	Low Profile	52"	23"	130"	44643
500	Loaf	48"	31"	92"	43843
1000	Low Profile	90"	21"	134"	45735
1050	Loaf	60"	49"	96"	44936

* Optional hold down bands are available for this tank.



PCO



FLAT BOTTOM



LOAF



CONSTRUCTION



INDUSTRY & MANUFACTURING



CHEMICAL HANDLING



RESOURCE MANAGEMENT

TANK LIDS



CONTAINMENT BASINS. ONE PIECE SEAMLESS UNIT.

Our impact and corrosion resistant Containment Basins are molded as a one-piece, seamless unit. Required containment volume may vary by application and jurisdiction. Check with your local authorities for details.

PLEASE NOTE: Refer to <https://www.norwesco.com/products/above-ground-tanks/containment> for more specifications and tank drawings.



250 CONTAINMENT BASIN



1300 CONTAINMENT BASIN

GALLON CAPACITY	WIDTH/DIAMETER	DEPTH	LENGTH	COLOR	PREMIUM 1.5
140	45"	17"	45"	Black	42771
250	68"	11"	92"	Black	42114
360	69"	16"	93"	Black	42940
500	80"	19"	92"	Black	42051
600	84"	20"	98"	Black	43069
1300	97"	22"	175"	Black	42195
7500	144"	110"	—	White	45379

CHEMICAL INJECTION TANK SYSTEMS. PERFECT FOR OIL AND GAS USAGE.

Our Chemical Injection Tank System is designed for applications in the oil and gas industry. The package includes a leg tank, stand, and enclosed containment basin. The enclosed containment basins have a pump mount, a 2" and a 3" female threaded connection for additional items such as solar panels. Does not include bands.

DESCRIPTION	WIDTH	HEIGHT	LENGTH	PREMIUM 1.5
65 Chemical Injection System	36"	58"	61"	44099
65 Leg Tank	23"	26"	43"	
Stand for 65 Leg Tank	23"	32"	31"	
Containment Basin - 95 Gallon	36"	15"	61"	
125 Chemical Injection System	45"	68"	64"	63880
125 Leg Tank	32"	35½"	43½"	
Stand for 125 Leg Tank	32"	32"	30¼"	
Containment Basin - 165 Gallon	45"	14½"	64"	
225 Chemical Injection System	54"	72"	89"	63885
225 Leg Tank	38"	41½"	52"	
Stand for 225 Leg Tank	38"	30"	34½"	
Containment Basin - 300 Gallon	54"	15½"	89"	
335 Chemical Injection System	54"	79"	80"	63890
335 Leg Tank	44"	49"	56"	
Stand for 335 Leg Tank	38"	30"	34½"	
Containment Basin - 380 Gallon	54"	19½"	80"	



CHEMICAL INJECTION TANK SYSTEM

PLEASE NOTE: Refer to <https://www.norwesco.com/products/above-ground-tanks/chemical-injection-tank-systems> for more specifications and tank drawings.



HIGH DENSITY POLYETHYLENE LIDS



DESCRIPTION	PART NO.
24" Lid and ring, vented (Rotoplas USA tanks)	64443
22" Lid and ring, vented	63679
22" Lid and ring, ventless	63863
18" Lid and ring, vented (Rotoplas USA tanks)	64448
16" Lid and ring with blue snap-in vent	63485
16" Lid and ring with 4" removable vent	34300012
4" removable vent for 16" lid	34300226
16" Lid and ring with 3" center thread	63868
16" Lid and ring, ventless	60367
12" Lid and ring, 4" vent	64323
10" Lid and ring, vented (Raven tanks)	67398
8" Lid with blue snap-in vent	63480
7" Lid, ventless	63571
5" Lid with ball check air vent	63484
5" Lid with 2" FPT	63264
5" Lid, hinged	63673

HINGED LIDS



This lid is manufactured from a co-polymer material for strength, durability and excellent chemical resistance. Our unique locking tab allows you to easily slip a padlock through it and secure your lid from theft or spills. Retrofittable in any standard 16" tank opening.

- Easy open/close – opens a full 180 degrees.

DESCRIPTION	PART NO.
22" Complete lid assembly, vented	63874
22" Complete lid assembly, ventless	64190
16" Complete lid assembly, vented	62532
16" Complete lid assembly, ventless	63390

LID ACCESSORIES AND REPAIR KIT

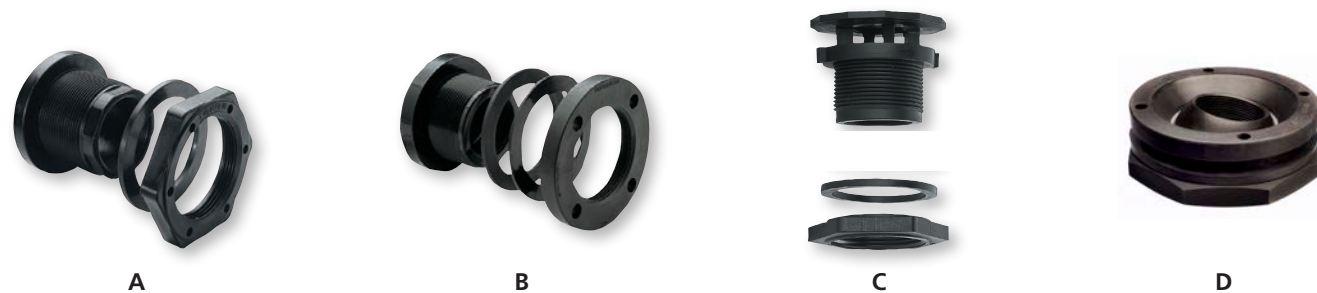
DESCRIPTION	PART NO.
2" MPT vent cap with poly screen	63266
2" MPT vent cap without screen	63316
3" MPT vent cap with poly screen	63845
Strainer basket for 16" fill-opening (7" depth)	67374
Poly welding gun and rod	60221
Poly welding rod, natural 30'	61879
Poly welding rod, black 30'	64160

POLYPROPYLENE BULKHEAD FITTINGS

Norwesco's polypropylene fittings come standard with an EPDM gasket. Viton gaskets are available as an option when EPDM may not be suitable for your application. The 2" stainless steel bulkhead fitting comes standard without a gasket. All of our bulkhead fittings are double threaded so you can make connections both inside and outside of the tank.

DESCRIPTION	HOLE SIZE REQUIRED IN TANK FOR INSTALLATION	STYLE	PART NO.	GASKET OPTION	
				EPDM	TYPE A VITON
½" Heavy duty	17/16"	A	62834	60402	60360
¾" Standard	17/16"	A	60401	60402	60360
¾" Heavy duty	15/8"	A	62798	62799	62800
1" Standard	2¼"	A	60427	60404	60361
1¼" Standard	2¼"	A	60403	60404	60361
1¼" Anti-vortex	2¼"	C	63065	60404	60361
1½" Standard	23/8"	A	63931	63938	63939
1½" Heavy duty	3"	A	60124	60406	60523
2" Standard	3"	B	60405	60406	60523
2" 316 stainless steel less gasket	3"	A	61767	60406	60523
2" Standard	3"	A	63481	60406	60523
2" Heavy duty	3¼"	A	63683	60336	60008
2" Self-aligning +	4½"	D	63668	60331	60351
3" Standard	4½"	A	62299	60331	60351
4" Standard	5¾"	A	62171	62785	62786

* Maximum tank wall thickness = 3/8."
+ Must be installed above liquid level.



PLEASE NOTE: Refer to <https://www.norwesco.com/products/valves-couplers-accessories/bulkhead-fittings> for more specifications and installation information.



Bulkhead Fittings



Bolted Fittings

POLYPROPYLENE DOUBLE THREADED



DESCRIPTION	# OF BOLTS	PART NO.	GASKET OPTION	
			EPDM	TYPE A VITON
¾" with SS bolts and EPDM gaskets	4	60502	60498	60355
1" with SS bolts and EPDM gaskets	4	60505	60498	60355
1½" with SS bolts and EPDM gaskets	4	60513	60497	60356
2" with SS bolts and EPDM gaskets	4	60516	60497	60356
3" with SS bolts and EPDM gaskets	6	62471	62048	60602

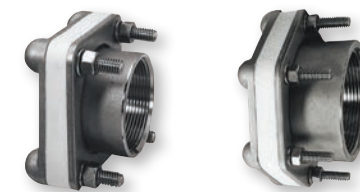
2 gaskets required per fitting.

DOUBLE THREADED TOTAL-DRAIN



DESCRIPTION	# OF BOLTS	PART NO.
2" polypropylene with SS bolts and EPDM gaskets	4	62470
3" polypropylene with SS bolts and EPDM gaskets	6	62472

STAINLESS STEEL DOUBLE THREADED



DESCRIPTION	# OF BOLTS	PART NO.	GASKET OPTION		
			EPDM	TYPE A VITON	X-LINK
¾" 316 SS less gasket	4	64251	63205	63224	62950
1" 316 SS less gasket	4	64252	63205	63224	62950
1½" 316 SS less gasket	4	64253	63426	63225	63042
2" 316 SS less gasket	4	64202	64196	64197	64198
3" 316 SS less gasket	6	64195	64199	64200	64201
4" 316 SS with gasket	8	64254	63690	63691	63689

Please specify your choice of gasket when ordering. 1 gasket required per fitting.

STAINLESS STEEL HEAVY TANK WALL



DESCRIPTION	# OF BOLTS	PART NO.	GASKET OPTION	
			EPDM	TYPE A VITON
1" 316 SS with SS long bolts and EPDM gaskets	4	63972	64154	63978
1½" 316 SS with SS long bolts and EPDM gaskets	4	63973	64155	63979
2" 316 SS with SS long bolts and EPDM gaskets	4	63974	64156	63980
3" 316 SS with SS long bolts and EPDM gaskets	6	64194	64152	63981

2 gaskets required per fitting.

Faster and more efficient delivery – Norwesco’s unique decentralized manufacturing structure means customers are never too far from one of our plants. This close proximity translates directly to lower overall delivered price.



Tank Holding Corp. (THC) is North America’s leading manufacturer of rotationally molded polyethylene storage and material handling products, with Norwesco being its largest brand segment. With more than 2,500 employees and 50 plants, THC operates synergistic manufacturing processes such as injection molding, blow molding, and steel fabrication. This allows THC to provide the highest quality and most economical solutions in each of the markets they serve.



NORWESCO PLANTS

UNITED STATES

- Albertville, AL
- Burnet, TX
- Fairfield, TX
- Griffin, GA
- Hanford, CA
- Lancaster, OH
- Merced, CA
- Owego, NY
- Petersburg, TX
- Shawnee, OK
- Sheldon, IA
- St. Bonifacius, MN
- Tooele, UT
- Washington Court House, OH
- Washougal, WA

CANADA

- Edmonton, AB
- Saskatoon, SK



TANK HOLDING PLANTS

UNITED STATES

- Bensenville, IL
- Chowchilla, CA
- Houston, TX
- Lincoln, NE
- Mancelona, MI
- Marked Tree, AR
- Philippi, WV
- West Chicago, IL
- Cranston, RI
- Hummelstown, PA
- Keauu, HI
- Pompano Beach, FL
- West Babylon, NY
- Ashtabula, OH
- Madison, IN
- Lake Wales, FL
- Chino, CA
- Brigham City, UT
- Burnet, TX
- Lake City, PA
- Oostburg, WI
- Canastota, NY
- St. Louis, MO
- Delano, MN
- Davenport, IA
- Smithfield, NC
- Rochester, IN
- Neche, ND
- Converse, TX
- North Liberty, IA
- Cascade, IA
- Hampton, IA
- Beaver Dam, WI
- Claremont, NC

CANADA

- Cornwall, ON

Can I purchase tanks directly from Norwesco?

With manufacturing plants spread throughout the USA and Canada, we have established an extensive distributor network that we support. Our tanks are sold exclusively through these partner distributors. Use the QR code or the “Find a Distributor” button on our website to find a distributor near you.



Find Distributer



FAQS

Are your tanks FDA approved and safe to use with potable water?

Yes! It is safe to store potable water in the Norwesco LST line of tanks. The resin used to manufacture these tanks meets FDA specifications for safe storage of potable water. More information on the FDA regulation our resins meet can be found on our FAQs webpage.

What is the maximum temperature that your tanks will withstand?

The temperature that polyethylene begins to soften at is a physical property that cannot be changed. Our polyethylene tanks have a maximum storage temperature of 120° F / 50° C. Tank contents with a temperature in excess of 120° F (even for a short period of time) can weaken the tank’s structural integrity and make it susceptible to deformation and possibly failure.

What will happen to my tank if I leave it outside in freezing temperatures?

The tank itself does not have a minimum temperature rating. The cold temperature “brittle point” of polyethylene is well below even the coldest recorded winter lows. If you plan to keep the liquid in the tank and you know that it will freeze, make sure that you leave room for expansion. Careful consideration should be given to any plumbing connected to the tank in case it freezes and causes damage to the tank’s fitting.

What chemicals can I store in your tanks?

Most fertilizers and chemicals can be used in our above ground tanks. Your chemical supplier can normally provide you with an MSDS (Material Safety Data Sheet) for their product which can help determine chemical compatibility with our tanks. If you need further assistance, please call our Customer Service department and they will be happy to research it for you. In addition to an MSDS, please be able to provide them with the temperature of the product and the product concentration.

What material are your tank fittings made of?

Our standard bulkhead tank fittings are made of glass-filled polypropylene and our standard gaskets are made of EPDM. When checking the compatibility of your chemical and our tanks, don’t forget to check the fitting materials as well. In addition to polypropylene, we can also provide tank fittings made of stainless steel and there are several options for gasket material.

How should I plumb my tank?

Rigid piping must not be connected directly to a tank – a flexible connection of some sort is required. Good quality hose is the most common way to do this. A flexible connection allows the tank to expand and contract under normal fill and empty cycles, without causing undue stress on the tank. This will extend the life of your tank significantly.



NORWESCO’S FULL REPLACEMENT WARRANTY. THE BEST IN THE BUSINESS.

Norwesco is proud to offer a full replacement warranty for the entire warranty coverage period. That means you get full coverage during the first critical years of owning your tank without the reduced coverage offered in longer but pro-rated warranties.



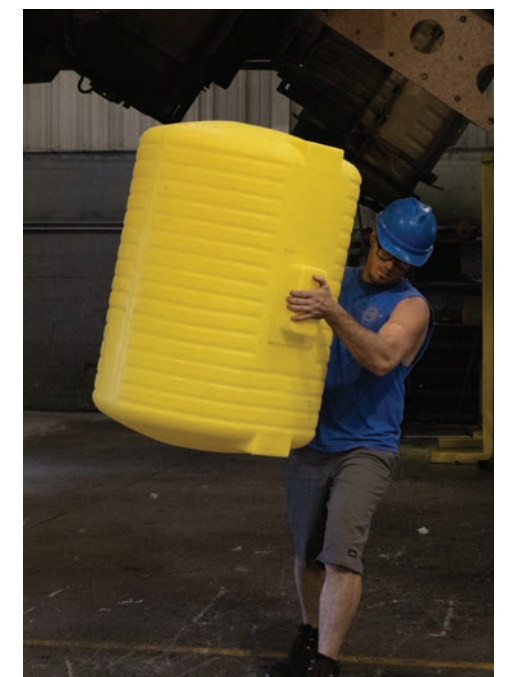
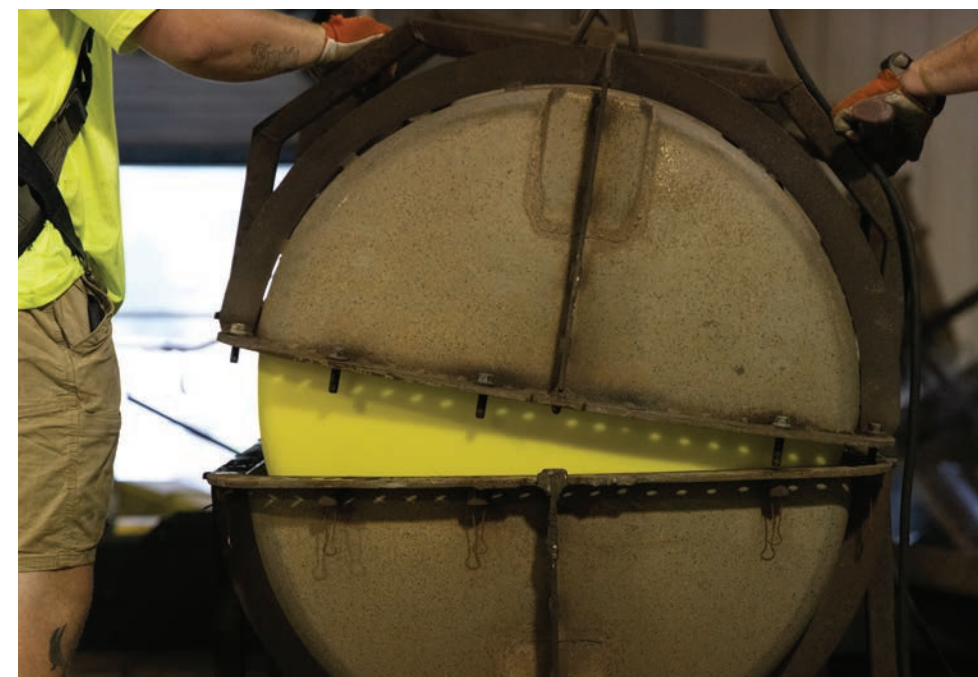
What do we offer?

Premium Weight (1.5 SG) and Water Only (1.1 SG) tanks come with a three (3) year warranty period. Heavy Duty (1.9 SG) tanks come with a five (5) year warranty period.

Norwesco warranty covers any defects in material and workmanship discovered in tanks used in their intended way and under normal conditions. Should a defect be found within the warranty coverage period, Norwesco will replace the tank. Warranty coverage is limited to the tank itself and does not include additional costs such as lost product or removal and reinstallation of a tank.

Find out more.

For full warranty information go to www.norwesco.com/aboutus or contact our Customer Service Department at 800-328-3420 or by email at customerservice@norwesco.com.





Norwesco

2200 Commerce Boulevard

Mound, MN 55364

Tel (952) 446-1946

Fax (952) 446-8808

www.norwesco.com

