



Dust Extractor

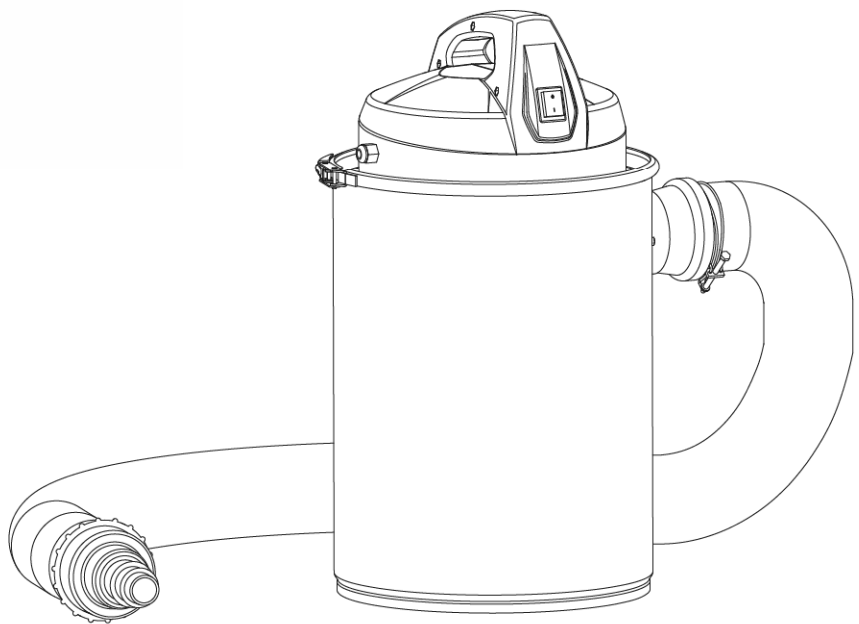
OPERATOR'S MANUAL

MODEL NUMBER
SC0050

SERIAL NUMBER

PURCHASE DATE

Both model number and serial number may be found on the main label. You should record both of them in a safe place for future use.



WARNING ⚠

Carefully read and understand this entire operator's manual before installing and using this product. Pay attention to all the cautions and warnings.

Shopmax Tools and Machines for your Shop

Shopmax manufactures a full line of rugged, long-lasting shop tools in several categories, including band saws, drill presses, shop vacuums, and more. As with sister company YARDMAX, expect professional quality, and is easy and safe to operate. With proper use and care, it is designed to give you many years of dependable service.

Prepare to experience the durability to take on any job — with the ease and portability.

MAX Performance, MAX Value, MAX Support

- ✓ Backed by decades of proven manufacturing expertise
- ✓ Enhanced design features come standard
- ✓ Engineered for the best user experience
- ✓ Quality metal parts are used instead of plastic
- ✓ A robust warranty supports all products
- ✓ Budget-friendly prices make it practical



Up for the job? SHOPMAX is.

TABLE OF CONTENTS

Introduction	1
Specifications	3
Symbols	3
Safety	4
Contents Supplied	7
Assembly	8
Know Your Machine	9
Operation	10

Maintenance	10
Transport	11
Storage	11
Wiring Diagram	12
Troubleshooting	13
Parts Diagram	15
Parts List	16
Warranty	17

WARNING ⚠

Carefully read through this entire operator's manual before using your new machine. Pay attention to all cautions and warnings.

CALIFORNIA PROPOSITION 65 WARNING

WARNING ⚠

Cancer and Reproductive Harm. www.P65Warnings.ca.gov.

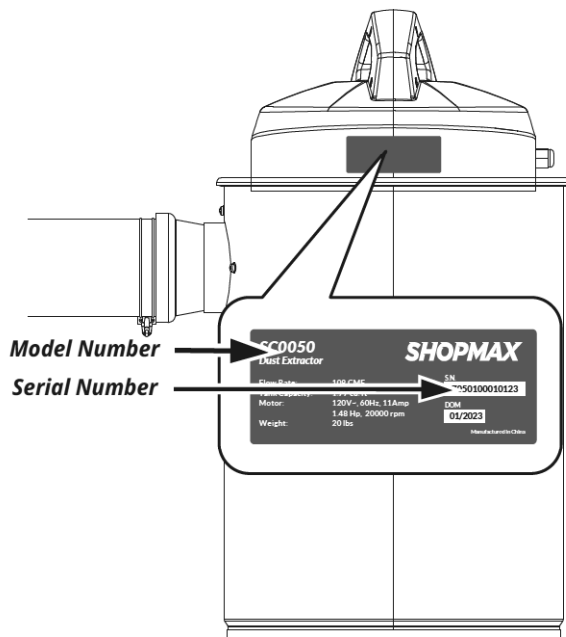
ENVIRONMENTAL



Recycle unwanted materials instead of disposing of them as waste. All tools, hoses, and packaging should be resorted, taken to the local recycling center and disposed of in an environmentally safe way.

MODEL AND SERIAL NUMBERS

Record the model and serial number as well as date and place of purchase for future reference. Have this information available when ordering parts or optional accessories and when making technical or warranty inquiries.



DISCLAIMER

YARDMAX reserves the right to discontinue, change, and improve its products at any time without notice or obligation to the purchaser. The descriptions and specifications contained in this manual were in effect at printing. Equipment described within this manual may be optional. Some illustrations may not be applicable to your unit.

SUPPORT

Have questions about your SHOPMAX equipment? Call us at 847-327-0566 or 844-YARDMAX, email us at info@shopmax.com for a replacement.

SPECIFICATIONS

Model Number	SC0050
Motor	120V
Power	1.48HP
Maximum Air Flow Capacity	108 CFM
Interior Hose Diameter	3.94"
Tank Capacity	13.2 Gal.
Decibel(Sound) Rating	83.40 dB(A)
Product Depth	14.76"
Product Width	14.76"
Product Height	26.38"
Weight	20 lbs

SYMBOLS

The rating plate on your machine may show symbols. These represent important information about the product or instructions on its use.



Indicates a potential personal injury hazard.



Read these instructions carefully.



Wear eye protection.



Wear hearing protection.



Wear mask. Dust which is injurious to health can be generated



Keep your hands away from air inlet



Do not touch parts that are hot from operation. Serious burns may result.



Don't turn the air inlet to person



The machine must be disconnected from the supply before maintenance

SAFETY

SIGNAL SAFETY WORDS DEFINITION

The definitions below give the level of severity for each signal word.

DANGER

This symbol is used to indicate a hazardous situation which, if not avoided, will result in serious injury or death.

WARNING

This symbol points out safety instructions. Read and follow all instructions before attempting to operate this product. Failure to comply with these instructions could result in serious injury or death.

CAUTION

This symbol indicates a hazard, which, if not avoided, may result in minor injury, moderate injury, or property damage.

NOTE

This information makes the product easier to use.

GENERAL SAFETY RULES

Understand your Machine

Read this manual and labels affixed to the machine to understand its limitations and potential hazards.

Be thoroughly familiar with the controls and their proper operation. Know how to stop the machine and disengage the controls quickly.

Do not attempt to operate the machine until you fully understand how to properly operate and maintain the machine and how to avoid accidental injuries and/or property damage.

If the unit is to be used by someone other than original purchaser or loaned, rented, or sold, always provide this manual and any needed safety training before operation. The user can prevent and is responsible for accidents or injuries that may occur to themselves, other people, and property.

Do not force the machine. Use the correct machine for your application. The correct machine will do the job more efficiently and safer at the rate it was designed.

Personal Safety

Do not permit children to operate this machine at any time.

www.shopmax.com

Keep children, pets, and other people not using the unit away from the work area. Be alert and shut off unit if anyone enters work area. Keep children under the watchful care of a responsible adult.

Do not operate the machine while under the influence of drugs, alcohol, or any medication that could affect your ability to use it properly.

Dress properly. Wear heavy long pants, boots. Do not wear loose clothing, short pants, or jewelry of any kind. Secure long hair so it is above shoulder level. Keep your hair, clothing, away from moving parts. Loose clothes, jewelry, or long hair can be caught in moving parts.

Protect eyes, face, and head from objects that may be thrown from the unit. Always wear safety goggles or safety glasses with side shields when operating.

Wear appropriate hearing protection. Wear respiratory protection to avoid the risk of inhaling harmful dust.

Always keep hands and feet away from all moving parts during operation. Moving parts can cut or crush body parts.

Always keep hands and feet away from all pinch points.

Do not touch parts that might be hot from operation. Allow parts to cool before attempting to maintain, adjust, or service.

Stay alert, watch what you are doing, and use common sense when operating the machine.

Do not overreach. Do not operate the machine while barefoot or when wearing sandals or similar lightweight footwear. Wear protective footwear that will protect your feet and improve your footing on slippery surfaces. Keep proper footing and balance at all times. This enables better control of the machine in unexpected situations.

Inspect your Machine

Check your machine before starting it. Keep guards in place and in working order. Make sure all nuts, bolts, etc., are securely tightened.

Never operate the machine when it is in need of repair or is in poor mechanical condition. Replace damaged, missing, or failed parts before using it. Keep the machine in safe working condition. Regularly check to see that keys and adjusting wrenches are removed from the machine area before starting it. A wrench or a key that is left attached to a rotating part of the machine may result in personal injury. Avoid accidental starting. Be sure the motor switch is off before transporting the machine or performing any maintenance or service on the unit.

Transporting or performing maintenance or service on a machine with its switch on invites accidents. If the machine should start to vibrate abnormally, stop the motor and check

immediately for the cause. Vibration is generally a warning sign of trouble.

Electric Safety

Protect yourself from electric shock. Do not plug or unplug the motor while standing in or around damp or wet ground. Do not use the unit in wet or damp areas or expose it to rain. Prevent body contact with grounded surfaces: pipes, radiators, ranges, and refrigerator enclosures. Make sure your fingers do not touch the plug's metal prongs when plugging or unplugging the unit.

Avoid inadvertent starting. Make sure that the switch is switched off when plugging the plug into an outlet.

Only use approved and appropriately identified extension cables for use outdoors. Only use cable reels in the unrolled state.

Do not use the cable for purposes for which it is not intended.

Do not use the cable to pull the plug out of the outlet. Protect the cable from heat, oil and sharp edges.

Have your electric tool repaired by a qualified electrician. This electric tool conforms to the applicable safety regulations. Repairs may only be performed by an electrician using original spare parts. Otherwise accidents can occur.

Work Area & Store Area

Keep the work area orderly. Disorder in the work area can lead to accidents.

Take environmental influences into account. Do not expose electric tools to rain. Do not use electric tools in a damp or wet environment. Make sure that the work area is well-illuminated. Do not use electric tools where there is a risk of fire or explosion.

Securely store unused electric tools. Unused electric tools should be stored in a dry, elevated or closed location out of the reach of children.

Specific Safety Rules

Intended Use

Do not force tool or attachment to do a job for which it was not designed.

- This dust extractor is designed to collect sawdust only.
- Never attempt to use this dust extractor to vacuum water or any other liquids.
- Never try to use this dust extractor to collect large wood pieces.
- Never attempt to use this dust extractor to collect flammable or combustible dust/gas. Do not use near any flammable or combustible liquids.
- Never attempt to use this dust extractor to collect anything that is burning or smoking.
- Do not use outdoors or on wet surfaces. Rain or moisture entering the dust extractor motor housing/canister increases the risk of electrical shock.
- Never attempt to use this dust extractor to collect metal materials such as screws, nails or other metal parts.

Please note that our equipment has not been designed for use in commercial, trade or industrial applications. Our warranty will be voided if the machine is used in commercial, trade or industrial businesses or for equivalent purposes.

Safety Instructions for the Handling of Dust Extractor

- Know your tool. Learn the tool's operation, application and specific limitations.
- Disconnect tool when changing the filter cartridge or filter bag.

- Avoid accidental start-up. Make sure that the tool is in the OFF position before plugging in.
- Do not force tool. It will work most efficiently at the rate for which it was designed
- Leave hands free to operate machine. Protect hands from possible injury
- Never leave tool running unattended. Turn the power off and do not leave tool until it comes to a complete stop.
- Do not overreach. Keep proper footing and balance.
- Never stand on tool. Serious injury could occur if tool is tipped over.
- Keep hands away from moving parts.
- Keep visitors at a safe distance from work area.
- Children must always be supervised in order to ensure that they do not play with the equipment.

Maintenance and Repair

- Pull out the mains plug for any adjustment or repair tasks.
- Repairs are to be carried out only by a qualified electrician using original replacement parts or the user may suffer an accident.
- Regularly inspect the filter for damage. Replace damaged filters!
- Check tightness of the casing and of the sealing of filter and filter bag regularly.
- Inspect the power cords for damage on a regular basis. Make sure that during this inspection the power cord is not

connected to the mains supply.

- Have damaged switches replaced by a customer service workshop.
- Refit all guards and safety devices immediately after you have completed any repairs or maintenance work.
- Check that the moving parts are in good working order, that they do not jam, and that no parts are damaged.
- Make sure that all parts are fitted correctly and that all other operating conditions are properly fulfilled
- Remove adjusting tools. Form habit of checking to see adjusting tools or accessories are removed before switching tool on.
- Faults on the machine have to be reported to the person in charge as soon as they are discovered.

Residual Risks

The manufacturer shall not be liable for any changes made to the machine nor for any damage resulting from such changes. Even when the machine is used as prescribed it is still impossible to eliminate certain residual risk factors during work.

- Wear proper apparel. Do not wear loose clothing, gloves, neckties, rings, bracelets or other jewelry which may get caught in moving parts of the tool.
- Wear protective hair covering to contain long hair.
- Wear safety shoes with non-slip soles.
- Wear approved eye protection and respirator when emptying collection canister or changing filter cartridge/bags.
- Be alert and think clearly. Never operate power tools when tired, intoxicated or when taking medications that cause drowsiness.
- There is an electrical hazard when improper electrical connecting cables are being used.
- Furthermore there might be non-obvious residual risks despite all precautions.

Remaining risks can be minimized by observing the "Safety Instructions" and the "Intended Use" as well as the operating instruction in their entirety.

This machine is not intended for use by persons (including children) with reduced physical, sensory or mental capabilities, or lack of experience and knowledge.

Children should be supervised to ensure that they do not play with the appliance.

Cleaning and user maintenance shall not be made by children without supervision

This machine is intended for commercial use, for example in hotels, schools, hospitals, factories, shops, offices and rental businesses.

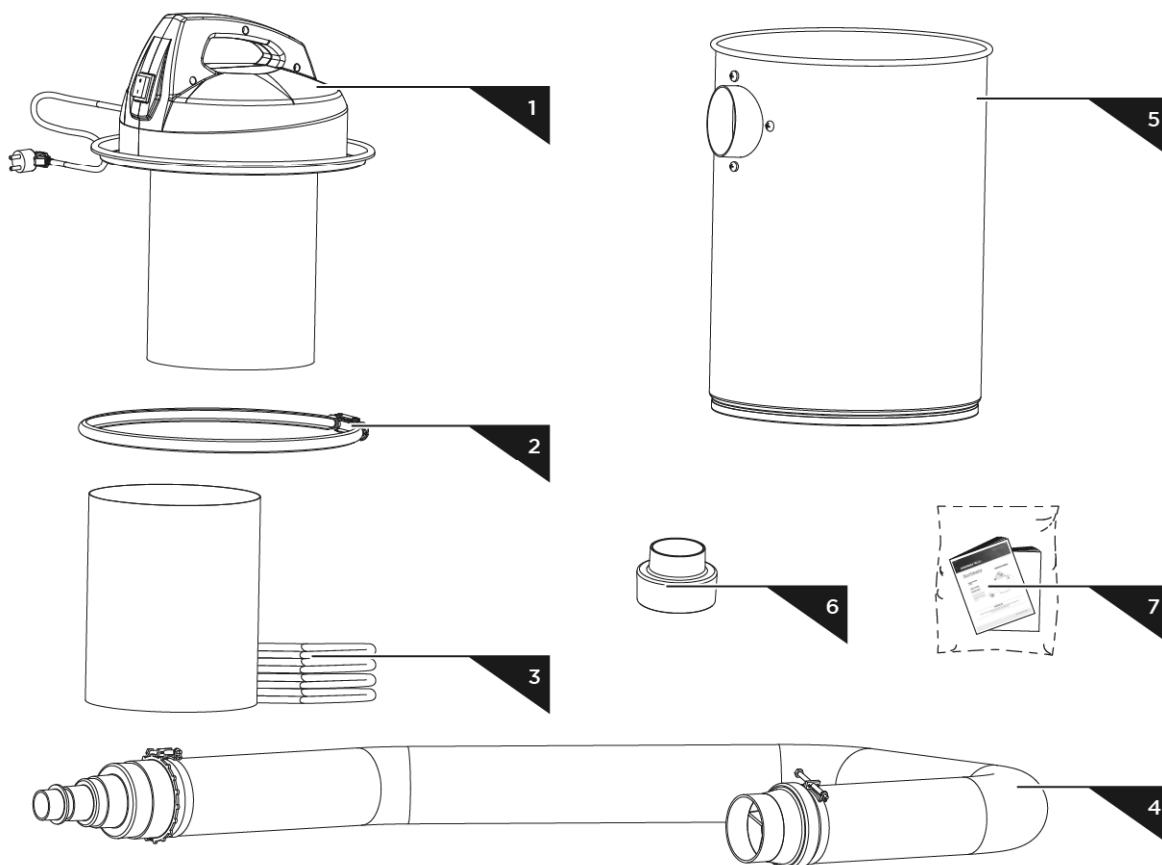
- **WARNING** Operators shall be adequately instructed on the use of these machines.
- **WARNING** This machine is not suitable for picking up hazardous dust.
- **WARNING** This machine is for dry use only.
- **CAUTION** This machine is for indoor use only.
- **CAUTION** This machine shall be stored indoors only.

The machine has to be disconnected from its power source during cleaning or maintenance and when replacing parts or converting the machine to another function:

If the supply cord is damaged, it must be replaced by the manufacturer, its service agent or similarly qualified persons in order to avoid a hazard.

CONTENTS SUPPLIED

The dust extractor comes partially assembled and is shipped in carefully packed carton. After all the parts have been removed from the carton, you should have:



No.	Description	Qty.
1	Motor Housing with Filter Cartridge/ Bag	1
2	Locking Strap	1
3	Filter Bag	5
4	Suction Hose	1
5	Collection Canister	1
6	Hose Adapter V	1
7	Operator's Manual	1

Contents Supplied -

ASSEMBLY

The filter cartridge and filter bag have been assembled with the motor housing. (See *Figure 1*)

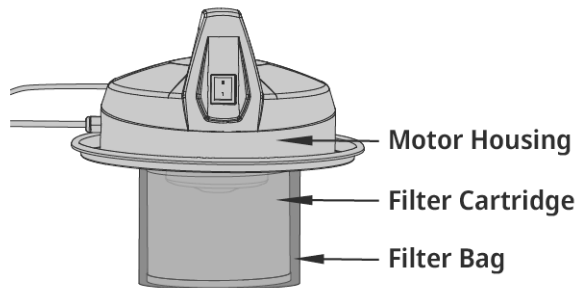


Figure 1

Place the motor housing with filter cartridge/bag on to the collection canister and lock in place with the locking strap. (See *Figure 2*)

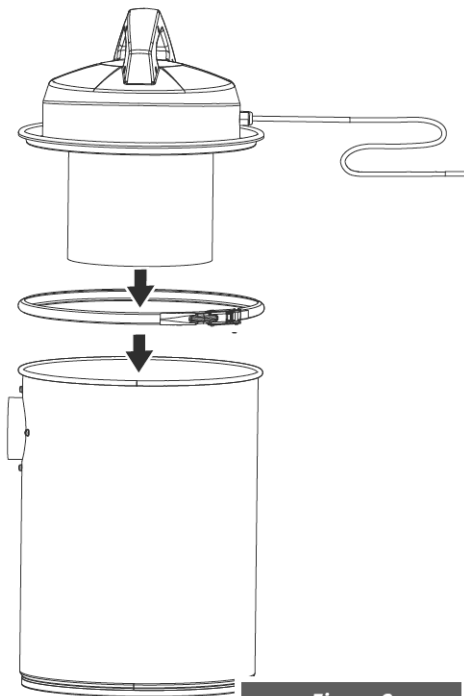


Figure 2

Plug the hose coupling onto the suction inlet. Secure it in place with the supplied hose clamp. (See *Figure 3*)

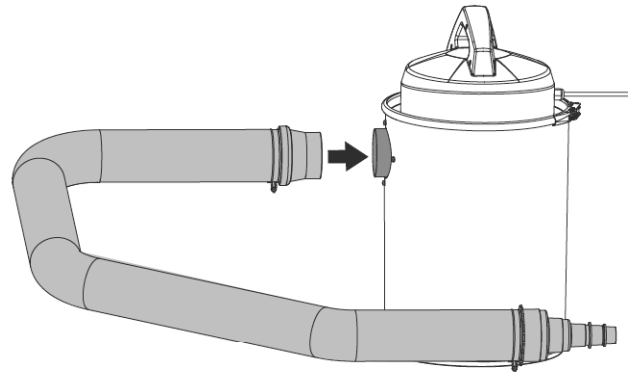
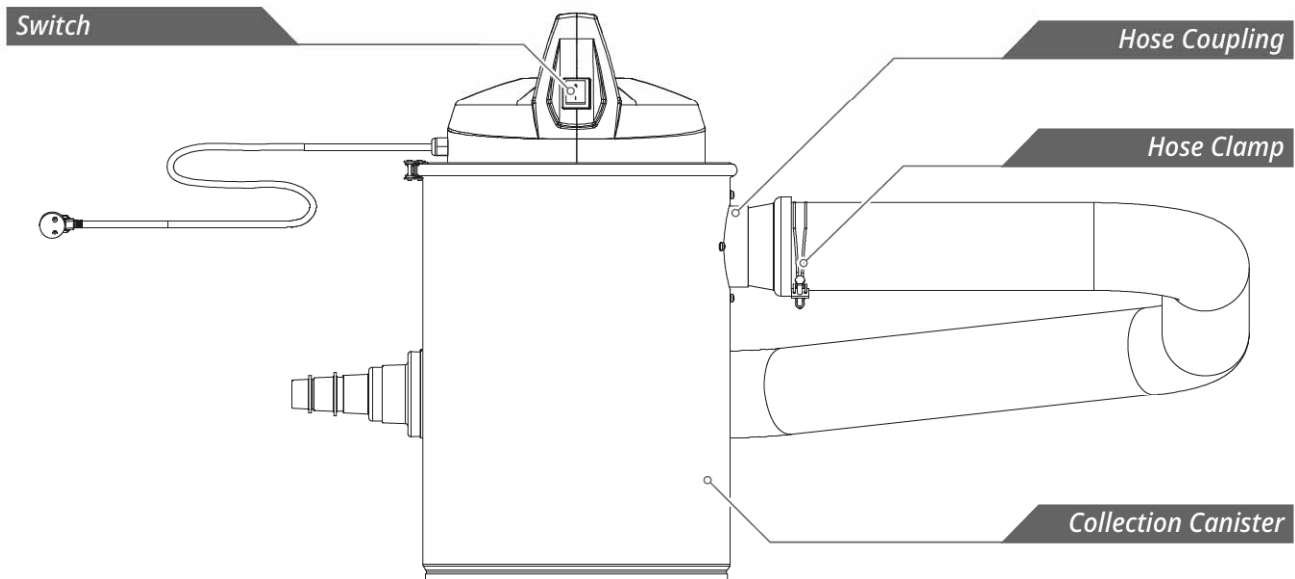
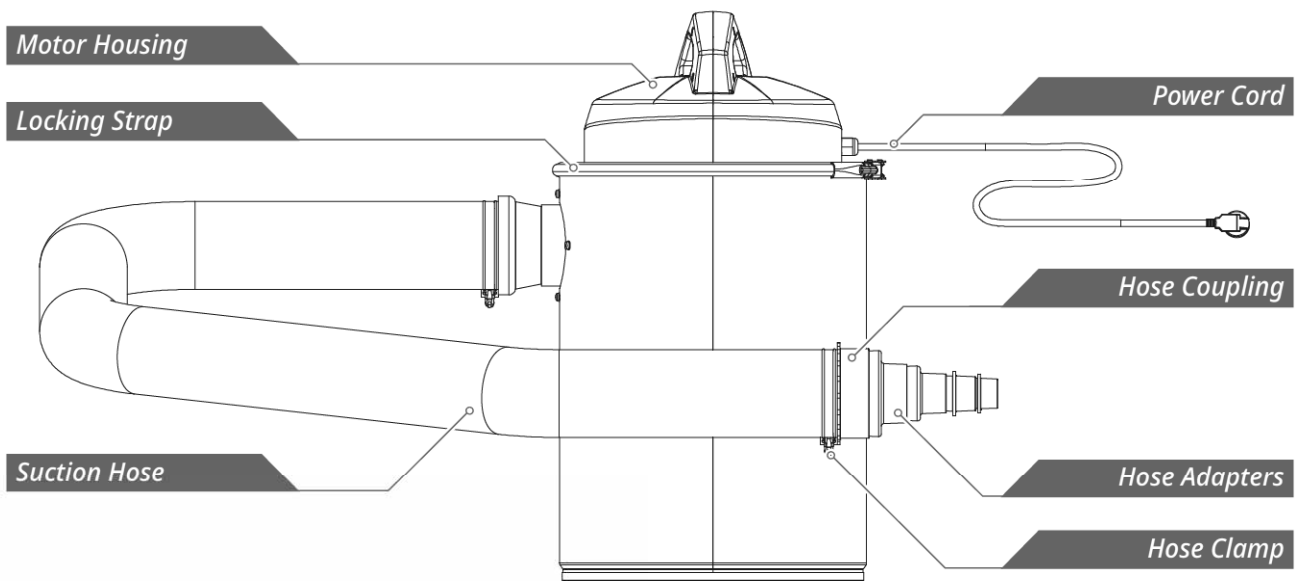


Figure 3

KNOW YOUR MACHINE

FEATURES AND CONTROLS



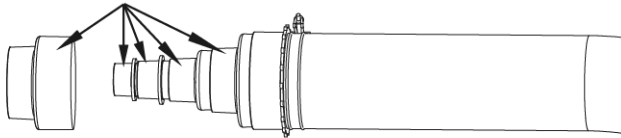
Know Your Machine - 

OPERATION

Before Starting

1. Place the dust extractor near the dust producing machine on a flat level surface.
2. There are five hose adapters supplied. Select the hose adapter that best fits the dust producing machine outlet and attach it to the hose coupler.

Hose Adapters



3. Connect the dust extractor adapter to the dust producing machine outlet. Make sure the connection is secure.
4. Make sure the machine is turned OFF.
5. Connect the dust extractor's power cord to the correct power source.

To Start

IMPORTANT

Turn dust extractor on before starting dust producing machine.






Place the dust extractor's ON/OFF switch in the ON (I) position. Turn the machine ON.

To Stop

IMPORTANT

ALWAYS turn the dust producing machine OFF before turning the dust extractor OFF.

Place the dust extractor's ON/OFF switch in the OFF (O) position. Turn the machine OFF.

	Hose Adapter I	Hose Adapter II	Hose Adapter III	Hose Adapter IV	Hose Adapter V
Top Outer Dia.	1-11/32" to 1-25/64"	1-35/64" to 1-39/64"	1-49/64" to 1-27/32"	2-43/64" to 2-3/4"	2-3/4" to 2-51/64"
Top Inner Dia.	1-1/8"	1-13/32"	1-19/32"	2-31/64"	2-9/16"
Bottom Outer Dia.	1-11/32" to 1-25/64"	1-35/64" to 1-39/64"	2-7/16" to 2-33/64"	3-53/64" to 3-59/64"	3-53/64" to 3-59/64"
Bottom Inner Dia.	1-1/8"	1-13/32"	2-9/32"	3-43/64"	3-43/64"
					

MAINTENANCE

DANGER

Make sure the machine is turned off and the cord is disconnected from the power source before servicing and removing/replacing any components on the machine.

General Maintenance Measures

Pull the mains plug before any adjustments, maintenance or repair. Have any work on the device that is not described in this instruction guide performed by a professional. Only use original

www.shopmax.com

parts. Allow the device to cool off before any maintenance or cleaning is undertaken.

Check the dust extractor daily for loose connections, damaged wires, worn switch, full collection canister, dirty filter cartridge/bag and any other unsafe condition.

Clean the equipment regularly with a damp cloth and some soft soap. Do not use cleaning agents or solvents; these could attack the plastic parts of the equipment. Ensure that no water can seep into the device. The ingress of water into an electric tool increases the risk of an electric shock.

Emptying Dust Canister

Check and empty the collection canister on your dust extractor regularly. The machine operates at a much higher level of efficiency when the collection canister is empty.

1. Pull out handle of locking strap to release and remove locking strap.
2. Remove motor housing with filter cartridge/bag by lifting the top handle.
3. Empty chips and dust inside drum into a suitable receptacle. Dispose of properly.
4. Replace motor housing with filter cartridge/bag on to the collection canister and lock in place with the locking strap.

Changing Filter Bag and/or Cartridge

Check and clean the filter cartridge/bag regularly. Replace as needed.

1. Pull out handle of locking strap to release and remove locking strap.
2. Remove motor housing with filter cartridge/bag by lifting the top handle.
3. Slide filter cartridge with bag off motor. (See Figure 4)

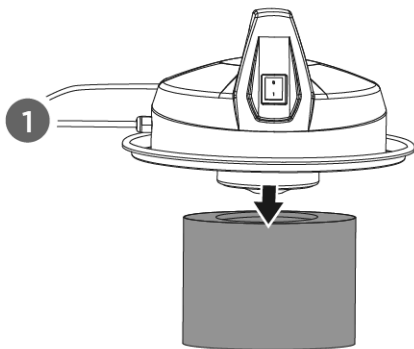


Figure 4

4. Remove bag from cartridge. (See Figure 5)

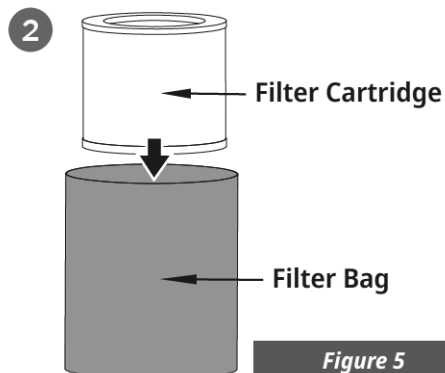


Figure 5

5. Place filter cartridge into new filter bag.
6. Fold and tuck the top of the bag into the filter cartridge. (See Figure 6)



Figure 6

7. Slide cartridge with new bag onto motor until snug.
8. Replace motor housing with filter cartridge/bag on to the collection canister and lock in place with the locking strap.

Lubrication

The sealed bearings in the motor have been permanently lubricated at the factory. They require no further lubrication.

TRANSPORT

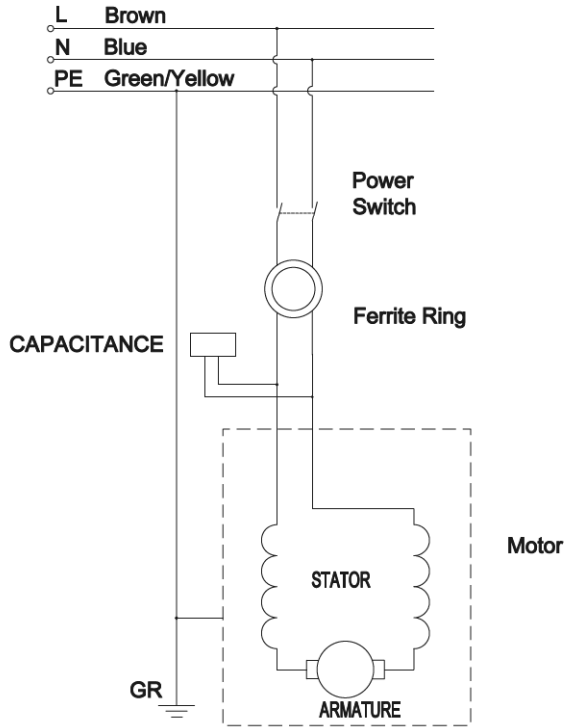
Turn off the power tool before any transport and disconnect it from the power supply.

The machine must only be lifted and transported on its top handle. Never lift the machine at the suction hose or the power cord.

STORAGE

Store the equipment and accessories in a dark and dry place at above freezing temperature. The ideal storage temperature is between 5 and 30°C. Store the electric tool in its original packaging. Cover the electric tool in order to protect it from dust and moisture.

WIRING DIAGRAM



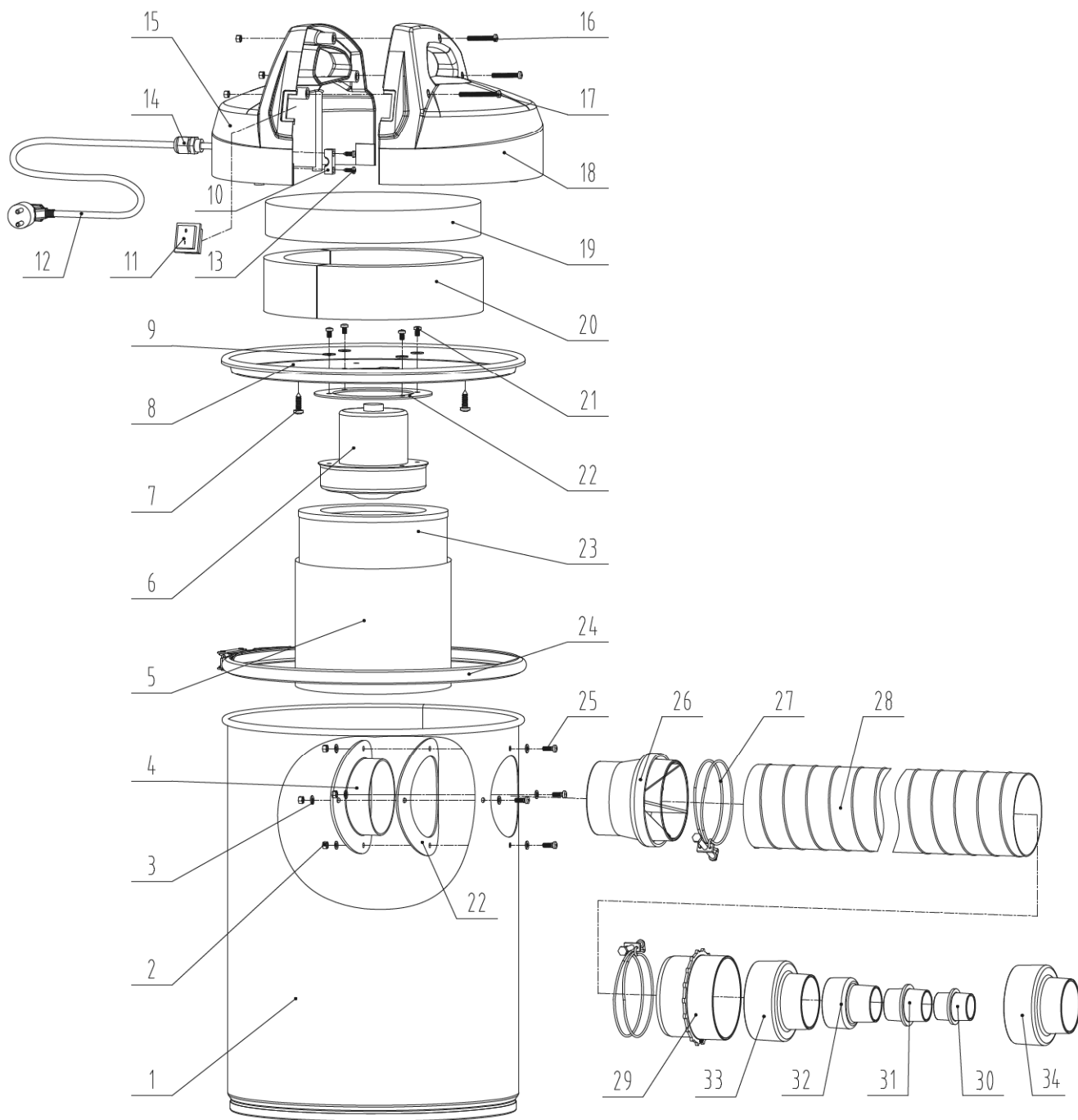
Maintenance - 

TROUBLESHOOTING

Problem	Cause	Remedy
Device will not start	<ol style="list-style-type: none"> 1. No mains voltage. Main circuit breaker is tripped 2. On switch (green) / Off Switch (red) (1) is broken 3. Motor faulty 	<ol style="list-style-type: none"> 1. Check the socket, mains supply cable, cord, mains plug; if necessary, have them repaired the main fuse 2. Repair by Customer Care 3. Repair by Customer Care
Motor will not run	<ol style="list-style-type: none"> 1. Defective or broken switch 2. Defective or damaged power cord 3. Open circuit, loose connections, or burned out motor 4. Low voltage 	<ol style="list-style-type: none"> 1. Take to a qualified service technician 2. Take to a qualified service technician 3. Take to a qualified service technician 4. Check the power line for the proper voltage. Use another circuit or have a qualified one
Motor slow to start or fails to reach full speed	<ol style="list-style-type: none"> 1. Burned or defective motor 2. Worn brushes 	<ol style="list-style-type: none"> 1. Check motor, replace if necessary 2. Inspect brushes, replace if necessary
Motor overheats	<ol style="list-style-type: none"> 1. Motor overload 2. Improper motor cooling 	<ol style="list-style-type: none"> 1. Reduce load by slowing dust production 2. Clean sawdust from motor
Tripping circuit breaker or fuses	<ol style="list-style-type: none"> 1. Motor overloaded 2. Improper capacity of circuit breaker or fuses 	<ol style="list-style-type: none"> 1. Reduce load by slowing dust production 2. Use proper capacity circuit breaker or fuse
Unit has vibration or noisy operation	<ol style="list-style-type: none"> 1. Motor or components are loose 2. Motor bearings faulty 	<ol style="list-style-type: none"> 1. Inspect/replace any stripped or damaged bolts/nuts and retighten 2. Take to a qualified service technician
Loud, repetitious noise or excessive vibration coming from dust extractor	<ol style="list-style-type: none"> 1. Dust collection canister is full 2. Filter cartridge/bag is dirty or damaged 3. Dust extractor hose restricted 4. The lumber is wet and dust is not flowing through the hose smoothly 5. There is a leak in the hose 	<ol style="list-style-type: none"> 1. Empty collection canister 2. Clean filter cartridge/bag or replace 3. Remove hose from dust extractor inlet and unblock the restriction in the hose. A plumbing snake may be necessary 4. Process lumber with less than 20% moisture content 5. Inspect and replace hose

Problem	Cause	Remedy
Motor stalls	<ol style="list-style-type: none">1. Short circuit in motor2. Incorrect fuses or circuit breakers3. Overloaded circuit4. Low Voltage	<ol style="list-style-type: none">1. Take to a qualified service technician2. Replace with correct fuse or circuit breaker for the circuit3. Turn off other machines and retry4. Check the power line for the proper voltage. Use another circuit or have a qualified electrician upgrade the service

PARTS DIAGRAM



Exploded View & Parts Lists - 

PARTS LIST

No.	Description	Qty.	No.	Description	Qty.
1	Drum	1	18	Right Guard	1
2	Nut M5	7	19	Circle Sponge	1
3	Flat Washer 5	8	20	Long Sponge	3
4	Suction Inlet	1	21	Philips Screw M5x8	3
5	Filter Bag	6	22	Seal Gasket	2
6	Motor	1	23	Filter Cartridge	1
7	Philips Screw ST6.3x22	3	24	Locking Strap	1
8	Top Cover	1	25	Philips Screw M5x14	4
9	Large Flat Washer 5	3	26	Hose Coupling 2	1
10	Cord Press Block	1	27	Hose Clamp	2
11	Switch	1	28	Suction Hose	1
12	Power Cord	1	29	Hose Coupling 1	1
13	Philips Screw ST4.2x13	2	30	Hose Adapter I	1
14	Strain Relief M16	1	31	Hose Adapter II	1
15	Left Guard	1	32	Hose Adapter III	1
16	Philips Screw M5x35	2	33	Hose Adapter IV	1
17	Philips Screw M5x50	1	34	Hose Adapter V	1

WARRANTY

WARRANTY INFO

The warranty set forth below is given by YARDMAX® with respect to new merchandise purchased and used in the United States and/or its territories and possessions. YARDMAX warrants its product, subject to limitations and exclusions below, against defects in material and workmanship for a period of two (2) years commencing on the date of original purchase, and will, at its discretion, repair or replace, free of charge to the customer, any part found to be defective in material or workmanship when the product is solely used for residential purposes during the two (2) year period.

LIMITATIONS AND EXCLUSIONS

YARDMAX's warranty does not cover normal wear and tear, neglect, accident, improper assembly, improper maintenance, modification, alteration, improper repair, use of parts not approved by YARDMAX or product damage due to misuse by the customer. Replacement of products or parts due to normal wear and tear is the responsibility of the customer. Proof of original purchase is required. The warranty is non-transferrable. This limited warranty shall only apply if the product has been assembled, operated, and maintained in accordance with Owner's Manual supplied with the product. No Implied Warranty, including any implied warranty of merchantability or fitness for a particular purpose, applies after the expiration of the applicable period of express written warranty provided above. No other express warranty, whether written or oral, except mentioned herein, given by any person or entity, including a dealer or retailer, with respect to any product, shall bind YARDMAX. The provisions as set forth herein in this warranty provide the sole and exclusive remedy arising from the sale. YARDMAX shall not be liable for incidental or consequential damages to the extent allowable by law. The customer may have other rights not disclosed herein; and they may vary from state to state.

Have questions about your SHOPMAX equipment?

Call us at 847-327-0566 or 844-YARDMAX, email us at info@shopmax.com



Your Tools. Your Shop.™

