

PVC INTERLOCKING LINER PANEL

Technical & Install Guide



Focused on the Customer Experience

Contents

Introduction	1
Performance of EZ Liner™ PVC Panels	2
Durability	2
Easy Maintenance	2
Product Specifications	2
Physical Properties	2
Chemical Resistance	3
Transportation, Handling, and Storage	3
Transportation	3
Handling	3
Storage	3
Before You Start	4
Safety Tips	4
Installation Tools	4
Acclimate Panels	4
Important Information	4
Install Components	5
PVC Liner Panel Installation	6
Cutting	6
Wall Only Installation (Wet and Controlled Environment)	6
Ceiling and Wall Installation (Wet and Controlled Environment)	8
Regular Installation Method	11
Food Safe Environment Installation Method	11
Trim Installation	12
Standard Installation	12
Food Safe Installation	13
Cleaning	14
Additional Information	14





For all Applications

KEY ADVANTAGES:

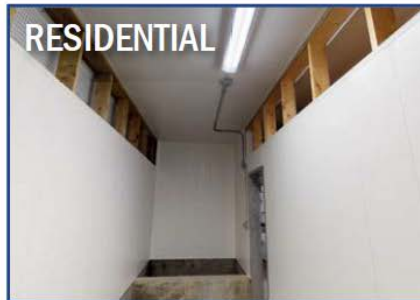
- Quick & Easy Installation - Save On Install Costs
- EZ Liner™ Trim System - Designed for 'EZ' Install
- All-Weather Interlocking System
- Pre-Slotted Nailing Flange
- Hidden Fasteners Provide Smooth Finish
- Designed for Rigidity & Strength
- Resistant to Moisture & Most Chemicals
- Easy Maintenance - Basic Power Washing
- Class A Fire and Smoke Rating, Non-Flammable



AGRICULTURAL



COMMERCIAL



RESIDENTIAL



INDUSTRIAL

What is EZ Liner™ PVC Interlocking Panel?

Manufactured from 100% virgin PVC material, EZ Liner™ PVC interlocking panels are easy-to-clean, low-maintenance, hygienic, and abuse resistant. Non-flammable and impact resistant, these PVC panels are perfect for use on the most demanding agricultural, industrial, commercial, and residential applications.



Easy to handle, EZ Liner™ PVC interlocking panels can be cut using basic woodworking tools and require no special equipment to install. The following technical overview provides basic information on the performance, handling, and installation of EZ Liner™ PVC interlocking panels.

- **All-Weather Interlocking System**
- **Impact & Scratch Resistant**
- **Highly Durable**
- **Easy-to-Install & Clean**
- **Low Maintenance**
- **Corrosion Resistant**
- **Class A Fire & Smoke Rating**
- **No Special Tools Needed**
- **Meets FDA & CFIA Requirements**

Perfect for lining indoor walls and ceilings, owners of agricultural structures, light industrial buildings, cannabis facilities, and vehicle washbays regularly choose EZ Liner™ PVC interlocking panels for its remarkable durability, ease of installation, and outstanding versatility.

EZ Liner™ PVC is an ideal alternative for conventional walls and ceilings in a broad range of applications including garages, public restrooms, workshops, horse stables, kennels, factories, warehouses, farm buildings, commercial kitchens, and indoor grow rooms.



Performance of EZ Liner™ PVC Panels

Durability

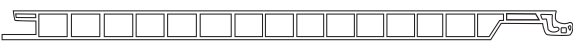


Designed for demanding applications, the corrosion resistant surface of the EZ Liner™ PVC panel is resistant to mold, mildew, and most chemicals. In addition, the panels smooth surface is easy to clean.

Easy Maintenance

The EZ Liner™ PVC panel requires minimal maintenance and cleans easily with basic power washing. The panel's water resistant layer can also withstand many corrosive chemicals commonly found in vehicle wash buildings and agricultural facilities.

Product Specifications

The following chart provides an overview of the product specifications for the EZ Liner™ PVC interlocking panel. (Actual values may vary.)

Product Specifications				
Profile	3/8" 		 	
Panel Colors & Widths	Ultra White*	Panel Width		16"
Panel Lengths (Custom lengths available)	8', custom lengths available up to 24'			
Fire Rating	Class A Smoke & Flame Spread			
Hygienic Rating	Meets FDA & CFIA Requirements			
Warranty	20-Year Limited Warranty			
Max Deflection	3.278mm Based on 2 lbs. psf. (Ceiling applications)			

* Ultra white panels and trims are UV rated for exterior applications, '100% exterior grade virgin PVC'

Physical Properties

The following chart provides the physical properties for the EZ Liner™ PVC Interlocking Panel.

Physical Properties			
Property	Typical Values (Values are not intended for preparing specifications)		Test Method
	Imperial	Metric	
Specific Gravity	1.48		ASTM D792
Notched Izod Impact (method A, 23°C)	17.1 ft-lb./in	-	ASTM D256
Drop Impact Resistance (Procedure B)	>3.7in-lb./mil	-	ASTM D4226
Tensile Yield Strength	6,065 psi	41.8 Mpa	ASTM D638
Modulus of Elasticity	355,000 psi	2447.6 Mpa	ASTM D790
Flexural Modulus	13,562 psi	93.5 Mpa	ASTM D790
Deflection Temperature Under Load (@264psi)	158°F	70°C	ASTM D648
Coefficient of Thermal Expansion	0.000044 in/in/°C		ASTM D696
Flame Spread	15	15	ASTM E84 CAN/ULC S102.2
Smoke Developed	320	210	ASTM E84 CAN/ULC S102.2



Chemical Resistance

The chemical resistance of PVC products differs significantly from the mechanism of corrosion of metals. Chemical attack on PVC sheet, where it occurs, consists generally of absorption of the chemical by the PVC sheet and its subsequent swelling.

For a complete list of chemicals and corrosive media, please call us at (800) 421-0102 or send an email to retail@polymershapes.com. It is important to note that PVC sheets are generally not recommended for use with acetone, ketones, ethers, or aromatic and chlorinated hydrocarbons.

Transportation, Handling, and Storage

Transportation

- Use a sturdy pallet (or wooden crate) that is as long as the longest panel.
- Stack horizontally starting with longest panel on the bottom (longest to shortest).
- If using a pallet, secure panels to limit movement during transportation.

Handling

- Even though PVC is durable, protect panels from abrasion while handling.
- To avoid unnecessary scratches, pick up and carry instead of dragging panels.
- Do not walk, jump, or drive on panels!

Storage

- Do not store PVC panels in direct sunlight or in a high heat enclosed space.
- Ideally, PVC panels should be stored in cool spot indoors on a flat, raised surface.
- If PVC panels are kept outdoors, cover and store in a dry place out of direct sun.
- Stack longest panel on the bottom (longest to shortest).
- Cover PVC panels with an opaque material that does not absorb or conduct heat.
- To avoid solar heat buildup between panels, make sure to cover the entire panel surface.
- If panels are shipped and packaged on a skid, make sure to cut all straps and loosen any 2x4's (wood framing) so the PVC panels are not restricted from expanding due to a confined environment.

Note: Original packaging is not sufficient protection from solar heat gain damage. While in transportation and storage, keep panels out of direct contact with sunlight. Thick wooden boards work well to isolate panels while transporting or storing. Improper storage will void any warranty due to damage by direct sunlight or not being able to breath in a confined location.

Before You Start

Safety Tips

For the safe installation of EZ Liner™ PVC interlocking panel, use ladders and/or scaffolding, protective goggles, a face mask, and other necessary safety equipment.



Installation Tools

Lightweight and easy to install, EZ Liner™ PVC panels can be fabricated on site and require no special equipment to install. Common tools needed: ladders/scaffolding, rubber mallet, rotary hammer drill, drill c/w hole saws, caulking gun, circular saw w/fine toothed blade, tape measure, box cutter, battery drill, square and straight edge, chalk line, and sheet rock putty knife.

Acclimate Panels

To avoid warping or deformation, store EZ Liner™ PVC panels inside the room where they will be installed for at least 24 hours before installation. This will minimize the amount of expansion or contraction after the panels are installed. Make sure to remove or loosen any packaging material.

- Do not install panels until building is fully enclosed.
- Heating and cooling equipment should be in operation.
- Residual moisture from construction has been removed.
- Do not install panels in a room with temperatures under 40° Fahrenheit (5° Celsius) or above 86° Fahrenheit (30° Celsius).

Important Information

Please read this entire guide prior to installation. There are different installation methods for walls only vs. walls and ceilings. The information provided in this install guide is applicable for the 16", and 18" wide EZ Liner™ PVC interlocking panel.

- EZ Liner™ should not be used in applications where the ambient or surface temperature of the PVC material will be above 122° Fahrenheit (50° Celsius).
- EZ Liner™ should not be used when installed as a component of an air duct system.
- All radiant heat must be at a minimum 18" (450mm) clearance from the PVC panel surface.
- If EZ Liner™ is being installed on walls and ceilings, it does not matter which is installed first.
- Plan the layout of the EZ Liner™ and trims to achieve even spacing and alignment with adjacent work.
- Determine panel layout and width of first panel so the first and last panel in each wall section will be a minimum of 8" (200mm) wide.
- For ceiling applications, provide a clearance at either panel end of 1/4" (6mm) for expansion.
- For wall applications, provide a clearance of 1/2" (12mm) at the top of the wall for expansion.
- When installing in cold temperatures, make sure to open the gap between each panel with a sheet rock putty knife to allow for expansion in hotter temperatures.

Note: EZ Liner™ PVC panels must be shielded from radiant heat with a minimum clearance of 18" (450mm) between the heat source and the panel. Consult manufacturer of heater before installing panels. If installing an epoxy floor, make sure the spray does not get onto the EZ Liner™ panels.

Install Components

Before beginning your project, confirm you have all the necessary install components. Most projects will require one or more of the following:

PVC Trim Pieces

EZ Liner™ PVC comes with a full line of trims to help make your installation effortless. Standard trim lengths are 8'. See chart on next page for available trim pieces.



EZ Liner™ PVC Trim System

In Stock (Ultra White)



J-Trim



Multi-H



Inside
Corner
Cove

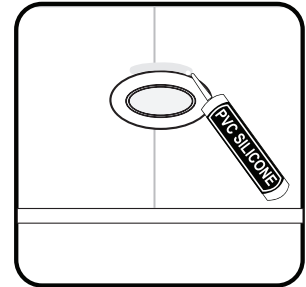


90-Trim

Silicone Sealant

After the installation is complete, a manufacturer approved silicone sealant may be used around fixtures, seal corners, and repair small holes. A one-part, neutral cure, white sealant is recommended. **Always check the product label to ensure PVC compatibility. Unapproved sealants may chemically attack the panel.**

Note: Painting PVC panels is not recommended. If painting is necessary, check with the manufacturer to ensure the paint is compatible with PVC. Never use paint thinner to remove paint from the panel. Paint thinner is highly incompatible with PVC.

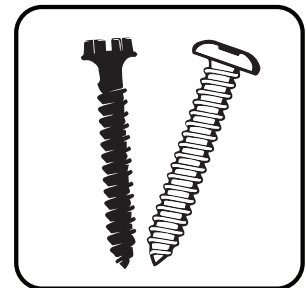


Fasteners

Below is a recommended fastener hardware guide for typical EZ Liner™ PVC interlocking applications.

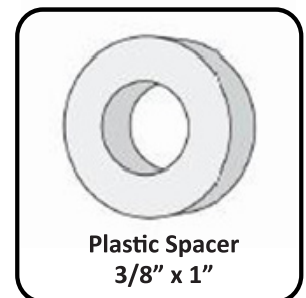
- Wood - #8 x 1 1/4" Square Truss Head
- Metal - #8 x 1 1/4" Square Pan Head
- Concrete - #11 x 1 1/4" Tapcon

Note: Do not use nails or staples. Only use fasteners recommended for your specific application. Length of screw is determined by specific installation.



Plastic Spacers

In a wet environment installation, plastic spacers may be used to create the necessary gap off the floor (about 1" or 25mm). Spacers may also be used when mounting a heavy object to the wall like an electrical box, preventing the PVC panel from being crushed if the mounting screws are overtightened.



You can special order any of the install components. If you have any questions concerning the install components required or need to order for your project, please contact Polymershapes at (800) 421-0102 or send an email to retail@polymershapes.com.

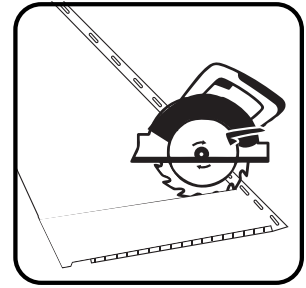
EZ LINER™ PVC Panel Installation

Cutting

EZ Liner™ PVC interlocking panels can be cut with common power or manual tools depending on the type of cut. We recommend using a circular saw with a fine tooth blade. For cutouts such as electrical boxes, a jigsaw is recommended.



- Before cutting, clamp the panel to the work surface to avoid vibration.
- Use a fine-tooth blade (12 to 16 teeth per inch) designed to cut plastic.
- Install the blade in the reverse direction.
- Move saw at a slow advance rate to avoid chipping or cracking.
- Clean panels of any debris before installing.



Note: For all cutouts, first drill a hole in a corner of the opening. Then, insert the jigsaw blade into the hole and cut along the marked lines of the opening.

Wall Only Installation

EZ Liner™ PVC interlocking panels can be installed on walls with the panel's running perpendicular or parallel to the main supports. For sloped applications, panels should run with the slope.

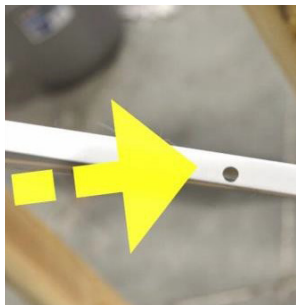
Before you start your installation, determine if your PVC application is in a wet environment or a controlled (non-wet) environment.

Wet Environment

- Install the Inside Corner Cove trim piece for the inside corners first. Take the trim to the top of the wall and 1" (25mm) up off the floor.
- If the PVC wall panels are being installed in a wet environment such as a car wash, the bottom J-Trim piece needs to be installed next.
- Before installing the J-Trim, make sure to drill a ¼" (6mm) hole in the bottom of the J-Trim piece at 16" (400mm) on center for water drainage (Pictures A & B). This is especially important if the walls will be washed with a power washer.



Picture A



Picture B



Picture C

- Before installing panels, run a chalk line all around the bottom of the floor about 1" (25mm) off the floor or use plastic spacers to create the necessary gap off the floor (Picture C).
- Install trims at a maximum of 12" (300mm) centerline between screws.
- Jump to Wall Installation Continued (page 9).

Controlled Environment

- Install the Inside Corner Cove trim piece for the inside corners first. Take the trim to the top of the wall and to the floor for a controlled environment.
- If the PVC wall panels are installed in a controlled environment (non-wet), then the J-Trim piece can be installed directly to the floor and no drain holes are required.
- Jump to Wall Installation Continued (page 9).

Wall Installation Continued (Wet and Controlled Environment)

- Install the J-Trim pieces around the top of the wall at whatever height the PVC wall panel will be installed. At each corner, cut back the face of the J-Trim the same as the bottom J-Trim (Pictures D & E).

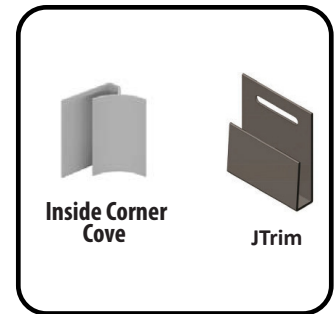


Picture D



Picture E

- Make sure to account for expansion with J-Trim!
 - If the PVC wall panel is not going to the ceiling, then install the J-Trim ½" (12mm) above the height of the panel to allow for panel expansion.
 - If the PVC wall panel is going to the ceiling, make sure the panel is cut ½" (12mm) shorter than the wall height for panel expansion.
- It is important to do a physical layout of as it may be beneficial to have a panel seam at an obstruction or pipe penetration.
 - If the seam does not meet an obstruction, measure the total distance and deduct the width of the panels being used so that you do not end up with a small sliver of a panel at one end. (Determine whether you have a 12" (300mm), 16" (400mm) or 18" (450mm) panel.)
 - If you need to cut the first panel after you pre-measure, start with the panel in the corner. The cut end should go inside the Inside Corner Cove and in the bottom track of the J-Trim piece.
- Use a level to vertically plumb the first panel (Picture F). This should be done before installing each PVC panel.
- You will need to "bow" the panel slightly to get it into the top J-Trim piece.
- Continue to install the balance of the panels with a 24" (600mm) centerline between screws. The top and bottom screw should start at 12" (300mm).
- If installing in a concrete or block wall, pre-drill with a rotary hammer drill. A battery drill works well to screw the Tapcon screws.



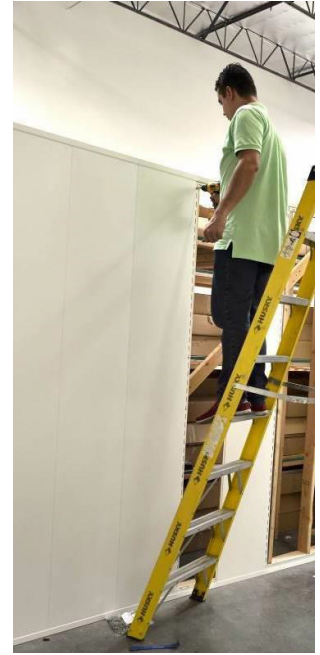
Picture F

- The last panel may need to be inserted into the slot of the Inside Corner Cove trim with a sheet rock putty knife. Make sure the last panel is cut $\frac{1}{4}$ " (6mm) less than the opening width to allow for panel expansion.
- If you are mounting a heavy object to the wall such as an electrical box, use plastic spacers to prevent the panel from being crushed if the screws are overtightened.
- The spacer is just a little thicker than the panel. Drill a 1" (25mm) hole into the panel and insert the spacer into the hole.
- The inner hole of the spacer can now receive any bolt or screw up to $\frac{1}{2}$ " (12mm) in diameter. This will keep the heavy object from hitting the PVC wall panel.

Note: Account for expansion when installing in cold temperatures, ensure you have the correct stainless steel screw for the substructure. Make sure to open the gap between each panel with a sheet rock putty knife to allow for expansion in hotter temperatures.



Picture G



Picture H

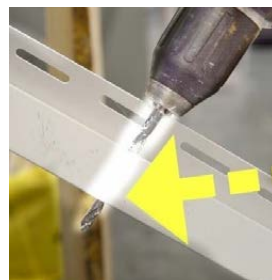
Ceiling and Wall Installation

EZ Liner™ PVC interlocking panels can be installed on walls and ceilings with the panel's running perpendicular or parallel to the main supports. For sloped applications, panels should run with the slope.

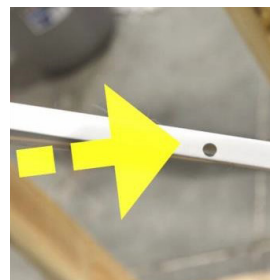
Before you start your installation, determine if your PVC application is in a wet environment or a controlled (non-wet) environment. You can special order any of the install components. If you have any questions concerning the install components required or need to order for your project, please contact Polymershapes at (800) 421-0102 or send an email to retail@polymershapes.com.

Wet Environment

- If the PVC wall panels are being installed in a wet environment such as a car wash, the bottom J-Trim piece needs to be installed first.
- Before installing the J-Trim, make sure to drill a $\frac{1}{4}$ " (6mm) hole in the bottom of the J-Trim piece at 16" (400mm) on center for water drainage. This is especially important if the walls will be washed with a power washer (see images A & B).



Picture A



Picture B

- Before installing panels, run a chalk line all around the bottom of the floor about 1" (25mm) off the floor or use plastic spacers to create the necessary gap off the floor (Picture C).
- Install trims at a maximum of 12" (300mm) centerline between screws.
- Jump to Ceiling and Wall Installation Continued.



Picture C

Controlled Environment

- If the PVC wall panels are installed in a controlled environment (non-wet), then the J-Trim piece can be installed directly to the floor and no drain holes are required.
- Jump to Ceiling and Wall Installation Continued.

Ceiling and Wall Installation Continued

Ceiling Installation

- Before beginning installation, it is important to determine the direction of the EZ Liner™ PVC ceiling panels first.
 - If the panels are running the length of the room and perpendicular to the trusses, make sure to use Multi-H Trims to join the panel lengths together.
 - If both the panels and joists are running the width of the room, a sub-frame needs to be installed at 24" (600mm) on center. After the sub frame is completed, proceed to install the PVC ceiling panels as indicated in Picture I.
- Start at one end and clip the PVC panel into the Inside Corner Cove.
- If installed in cold weather, make sure to cut back the PVC ceiling panel a 1/2" (12mm) to create a gap for panel expansion.
- Fasten to the joists at a minimum of every 24" (600mm) centerline. If you do not hit a joist, add a piece of wood blocking at the end of the PVC panel so the Multi-H Trim has a fastening point.
- Continue with these steps until the last panel. The last panel will need to be cut a 1/2" (12mm) smaller to create a gap for it to slide into the Inside Corner Cove



Picture I

Wall Installation

- At each corner, insert the wall panels into the track of the Inside Corner Cove. Cut back the face of the bottom J-Trim piece (Pictures D & E).
 - If the PVC wall panel is going to the ceiling, make sure the panel is cut $\frac{1}{2}$ " (12mm) shorter than the wall height for panel expansion.
- It is important to do a physical layout as it may be beneficial to have a panel seam at an obstruction or pipe penetration.
 - If the seam does not meet an obstruction, measure the total distance and deduct the width of the panels being used so that you do not end up with a small sliver of a panel at one end. (Determine whether you have a 12" (300mm), 16" (400mm) or 18" (450mm) PVC panel.)
 - If you need to cut the first panel after you pre-measure, start with the panel in the corner. The cut end should go inside the Inside Corner Cove and in the bottom track of the J-Trim piece.
- Use a level to vertically plumb the first panel (Picture F). This should be done before installing each PVC panel.
- You will need to "bow" the panel slightly to get it into the top J-Trim piece (Picture G).
- Continue to install the balance of the panels with a 24" (600mm) centerline between screws. The top and bottom screw should start at 12" (300mm) (Picture H).
- If installing in a concrete or block wall, pre-drill with a rotary hammer drill. A battery drill works well to screw the Tapcon screws.
- The last panel may need to be inserted into the slot of the Inside Corner Cove trim with a sheet rock putty knife. Make sure the last panel is cut $\frac{1}{4}$ " (6mm) less than the opening width to allow for panel expansion.



Picture D



Picture E



Picture F



Picture G



Picture H

- If you are mounting a heavy object to the wall such as an electrical box, use plastic spacers to prevent the panel from being crushed if the screws are overtightened.
- The spacer is just a little thicker than the panel. Drill a 1" (25mm) hole into the panel and insert the spacer into the hole.
- The inner hole of the spacer can now receive any bolt or screw up to ½" (12mm) in diameter. This will keep the heavy object from hitting the PVC wall panel.

Note: Account for expansion when installing in cold temperatures, ensure you have the correct stainless steel screw for the substructure. Make sure to open the gap between each panel with a sheet rock putty knife to allow for expansion in hotter temperatures.

You can special order any of the install components. If you have any questions concerning the install components required or need to order for your project, please contact Polymershapes at (800) 421-0102 or send an email to retail@polymershapes.com.

Regular Installation Method

- Install the PVC ceiling panels without any trim at the junction of the ceiling and wall.
- If panels are installed in cold weather, make sure to follow recommended clearances for panel expansion.
- After installation of the ceiling panels, install the J-Trim piece based on the method of whether the J -Trim goes all the way to the floor or not.
- Once all the PVC wall panels are installed (as per Wall Only Installation) go back and install the Inside Corner Cove.

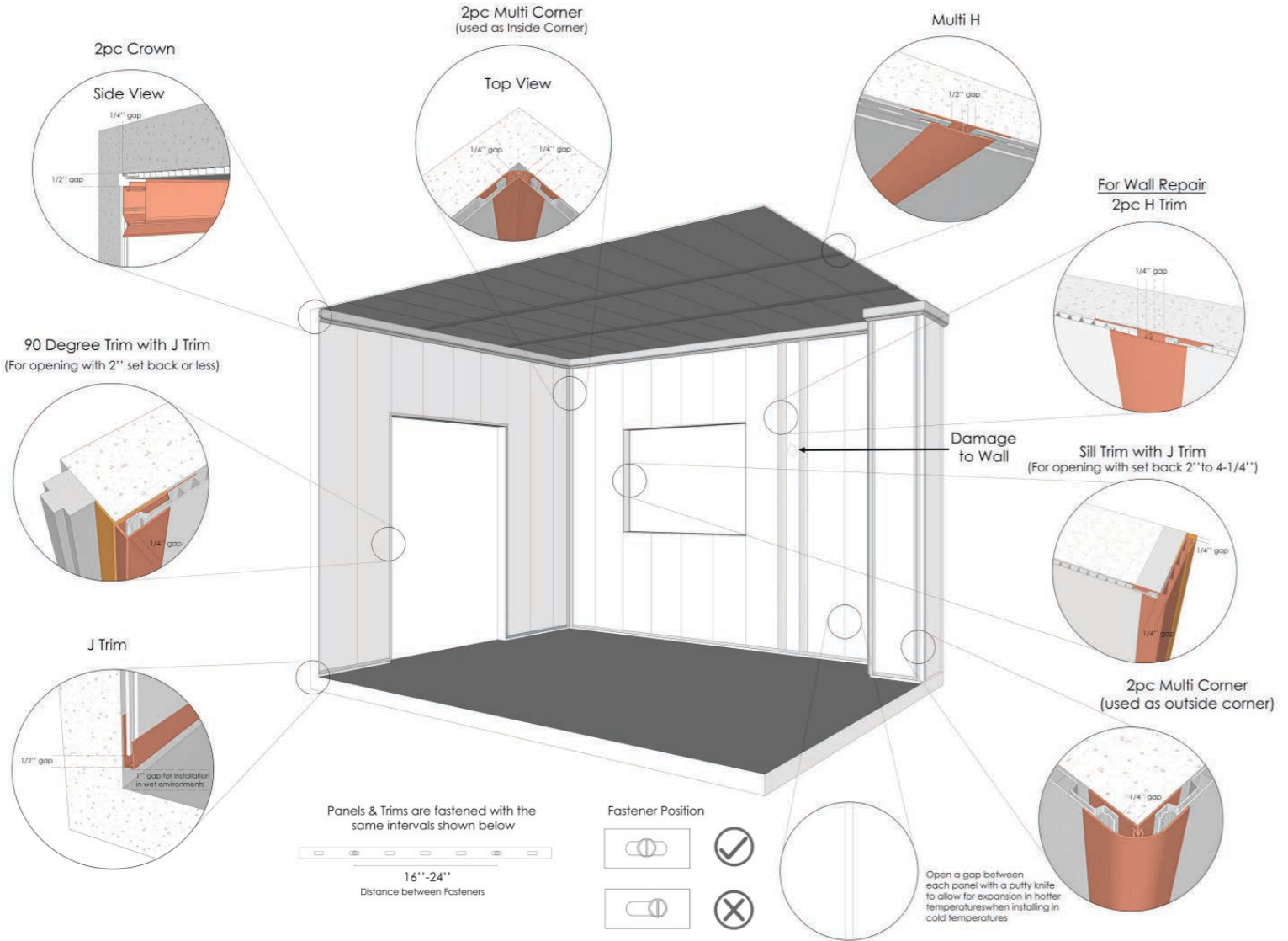
Food Safe Environment Installation Method

- If it is a food safe environment, use the 90-Trim piece for the wall to ceiling transition.
- Make sure to install the 90-Trim around the perimeter of the wall to ceiling joint first.
- The wall or ceiling PVC panels can be installed next.
- Jump to Wall and Ceiling Installation (page 10).



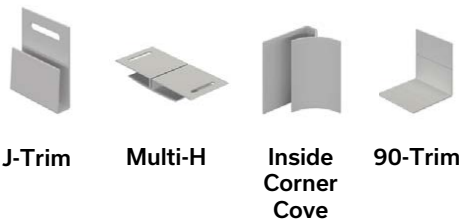
Trim Installation

Standard Installation

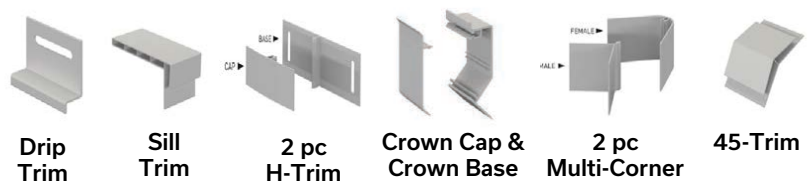


EZ Liner™ PVC Trim System

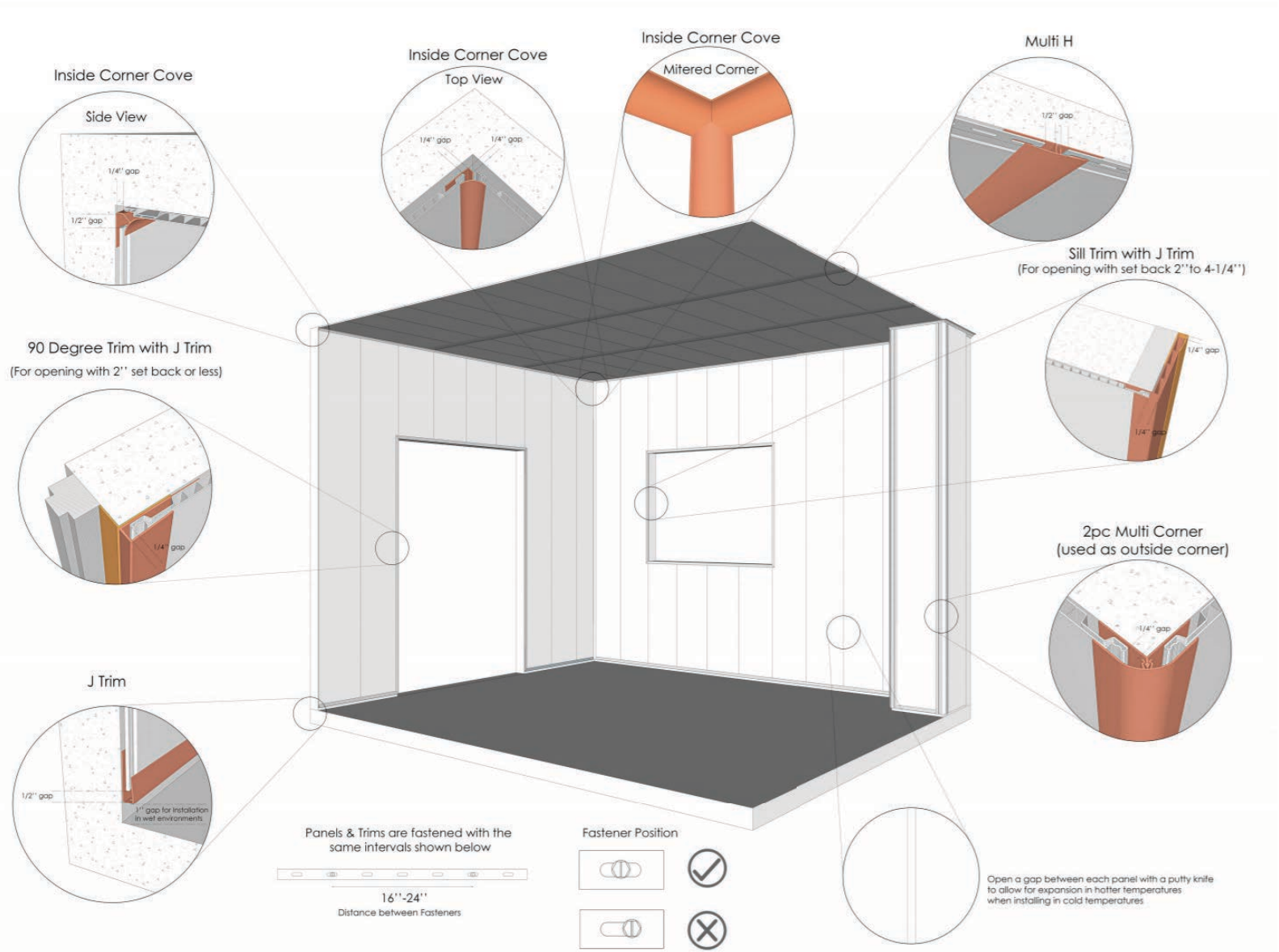
In Stock



Special Order

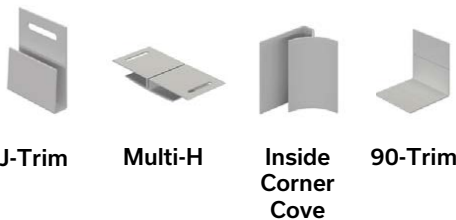


Food Safe Installation

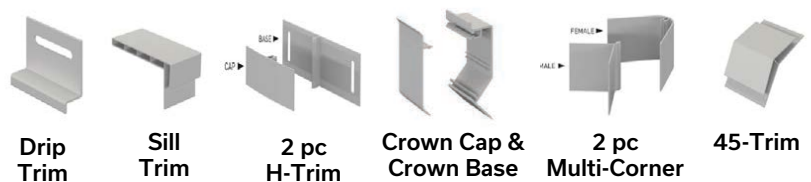


EZ Liner™ PVC Trim System

In Stock



Special Order



Cleaning

Regular cleaning of EZ Liner™ PVC will help prolong the life of the panels. Use of incompatible cleaning products can cause structural and/or surface damage.

- To remove common dirt, hand wash with a soft cloth or sponge and a mild cleaning solution.
- Regular rinsing of panels with clean lukewarm water is sufficient in dry areas.
- For hard to clean areas, a small- to mid-sized power washer may be used. Keep nozzle 4-6 feet away from wall and use a wide spray to distribute water pressure.

Note: *Abrasive cleaning agents or pads should never be used as they may scratch the panel's surface.*

Recommended Cleaners:

- Nu-Wall by Arcadian Services 1-800-289-7627
- Solutions Plus by Solutions Direct 1-855-225-2700
- Vision Wall Cleaner by VER-TECH Labs 1-877-866-9742

Additional Information

You can special order any of the install components. If you have any questions concerning the install components required or need to order for your project, please contact Polymershapes. If you have a specific question about requirements in your region, contact your local code office or building inspector.

Drawings and technical reports are provided for reference only. Drawings are not project-specific and are for product representation only. Actual products may vary. These drawings are the property of Polymershapes and are to be used solely as a representation of Polymershapes products. These designs may not be recreated or produced without the expressed, written consent of Polymershapes.

All information, recommendations, or advice given by Polymershapes employees or partners, written or oral, is given in good faith and is thought to be accurate and current. It is the responsibility of each product user to ensure the product is used in compliance with current environmental and legal requirements specific to each product application. Polymershapes and its partners will not be held liable for incorrect or improper use of its products.

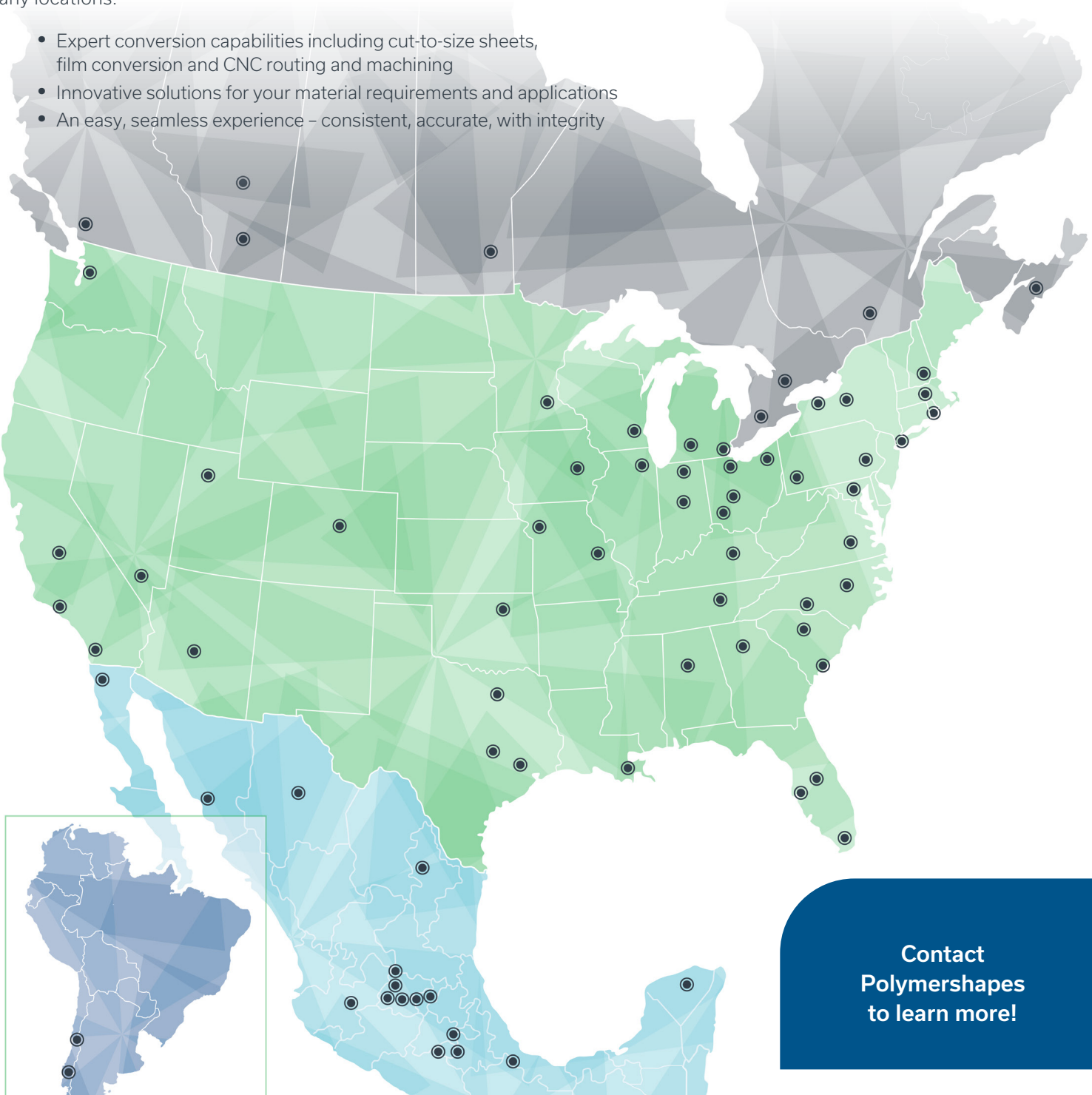
POLYMERSHAPES HEREBY DISCLAIMS ANY WARRANTIES, EXPRESS OR IMPLIED, INCLUDING IMPLIED WARRANTY OF MERCHANTABILITY AND/OR IMPLIED WARRANTY OF FITNESS FOR A PARTICULAR PURPOSE. POLYMERSHAPES SHALL NOT BE LIABLE FOR ANY INCIDENTAL, CONSEQUENTIAL, OR PUNITIVE DAMAGES.



We are committed to shaping your success!

Polymershapes is the premier distributor of plastic sheet, rod, tube, film, and associated products, with over 75 years of industry-leading heritage. We have the industry's most knowledgeable and highly trained sales and customer service team. Our network of 70+ stocking facilities, located throughout the United States, Canada, Mexico and Chile, enables our customers access to extensive local inventory from world-class supplier partners, and we can provide same-day delivery in many locations.

- Expert conversion capabilities including cut-to-size sheets, film conversion and CNC routing and machining
- Innovative solutions for your material requirements and applications
- An easy, seamless experience – consistent, accurate, with integrity



Contact
Polymershapes
to learn more!

Contact us for quotes & availability:
(800) 421-0102 | retail@polymershapes.com

 **Polymershapes**

You're the Center of All We Do
polymershapes.com