

greenworks®

CK600D

EN	7416702T	60V GO-KART	SERVICE MANUAL
EN	7416702	60V GO-KART	SERVICE MANUAL
EN	7427602	60V GO-KART	SERVICE MANUAL
EN	7421502	60V GO-KART	SERVICE MANUAL



OVC917

www.greenworkstool.com

REV1.0

1

CONTENTS

General Information

LABELS-WARNING/SAFETY.....	3
LABELS-BRAND/MODEL.....	5

Body and Structures System

FRAME ASSEMBLY	7
BATTERY COVER ASSEMBLY	9
BELT ASSEMBLY	11
GUARDS AND PROTECTIVE PARTS	13

Electrical System

CONTROLLERS AND BOX PARTS	15
SWITCHES & METER PARTS	17
LIGHTS PARTS	19
OTHERS	21

Drive System

FRONT WHEEL ASSEMBLY	23
SHOCK ABSORBER ASSEMBLY	25
DRIVE MOTOR.....	27

Operator System

BRAKING SYSTEM.....	29
STEERING WHEEL ASSEMBLY	31
SEAT ASSEMBLY	33
PEDALS ASSEMBLY.....	35

NOTE: ILLUSTRATIONS MAY OR MAY NOT REPRESENT THE ACTUAL ASSEMBLIES AND IT IS NOT RECOMMENDED TO USE THIS MANUAL AS A GUIDE TO ASSEMBLE OR DISASSEMBLE THE GO KART.

LABELS-WARNING/SAFETY



11-01

⚠ WARNING:

The hub motor will generate high temperature during the running of the GO-KART.
Le fonctionnement du véhicule peut provoquer une température élevée dans le moteur de la roue.
El funcionamiento del vehículo provocará altas temperaturas del motor del cubo.



No touch /
Ne pas toucher/
Non toccare

11-02

⚠ WARNING:

PLEASE POWER OFF BEFORE REMOVE THE BATTERY PACK. / VEUILLEZ ÉTEINDRE AVANT D'ENLEVER LE PAQUET DE BATTERIE. / POR FAVOR, APAGUE ANTES DE RETIRAR LA BATERÍA.

11-03

⚠ WARNING:



⚠ WARNING:

ALWAYS USE AN APPROVED HELMET AND PROTECTIVE GEAR. NEVER USE ON PUBLIC ROADS. NEVER USE WITH DRUGS OR ALCOHOL. NEVER PERMIT CHILDREN UNDER AGE 14 TO OPERATE THIS GO KART.

⚠ AVERTISSEMENT:

PORTEZ TOUJOURS UN CASQUE ET UN ÉQUIPEMENT DE PROTECTION APPROUVÉS. NE JAMAIS UTILISER SUR LA VOIE PUBLIQUE. NE JAMAIS UTILISER AVEC DES DROGUES OU L'ALCOOL. NE JAMAIS PERMETTRE AUX ENFANTS DE MOINS DE 14 ANS D'OPÉRER CE GO KART.

⚠ ADVERTENCIA:

UTILICE SIEMPRE UN CASCO Y EQUIPO DE PROTECCIÓN APROBADOS. NUNCA USAR EN VÍAS PÚBLICAS. NUNCA USE CON DROGAS O ALCOHOL. NUNCA PERMITA QUE NIÑOS MENORES DE 14 AÑOS OPEREN ESTE GO KART.

11-04

⚠ WARNING:

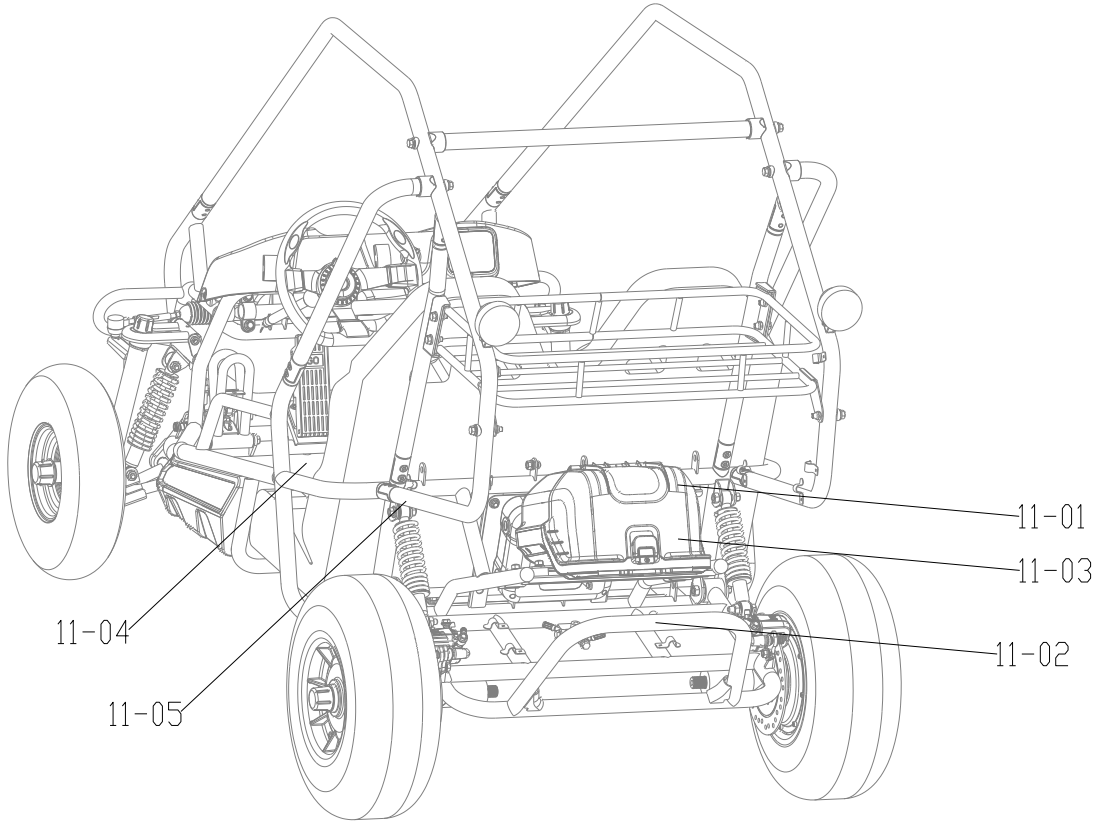
IMPROPER TIRE PRESSURE OR OVERLOADING CAN CAUSE LOSS OF CONTROL. LOSS OF CONTROL CAN RESULT IN SEVERE INJURY OR DEATH.

- COLD TIRE PRESSURE:
MIN : 4 PSI (27.6 KPA)
MAX : 10 PSI (69 KPA)
- MAXIMUM WEIGHT CAPACITY : 275 LBS.(125KG)

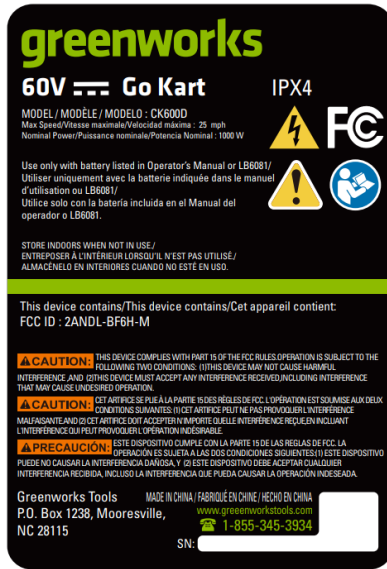
11-05

11-1

ITEM NO.	PART NO.	DESCRIPTION	QTY
11-01	R0207499-00	Anti-pinch Hand - Warning Label	1
11-02	R0207500-00	Anti-scald - Warning Label	1
11-03	R0207501-00	Power Off - Warning Label	1
11-04	R0207502-00	Common Use - Warning Label	1
11-05	R0207503-00	Tire Pressure Label	1



LABELS-BRAND/MODEL



12-01



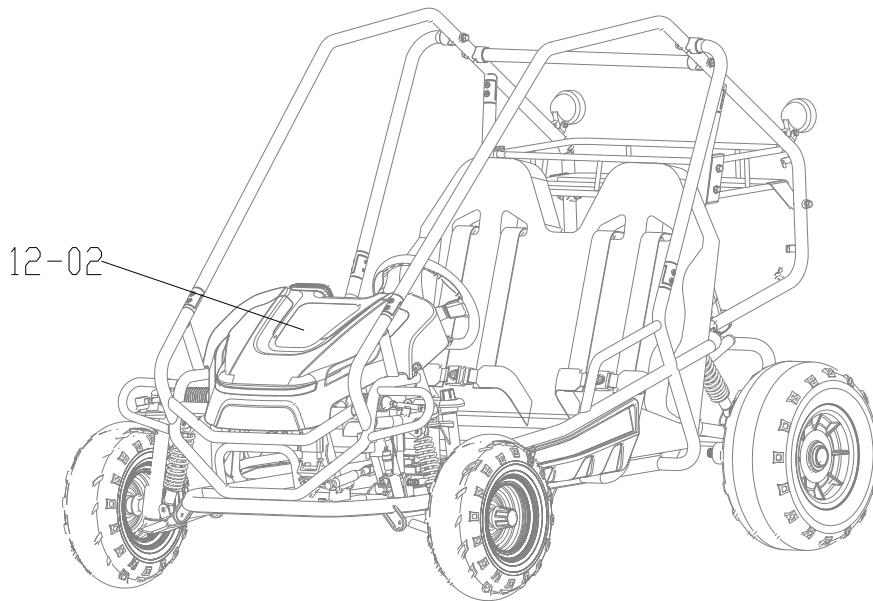
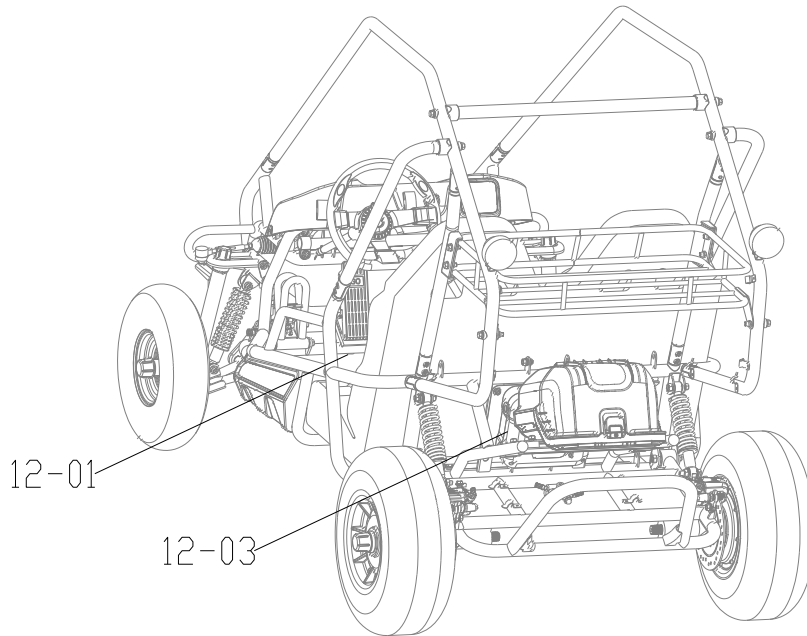
12-02



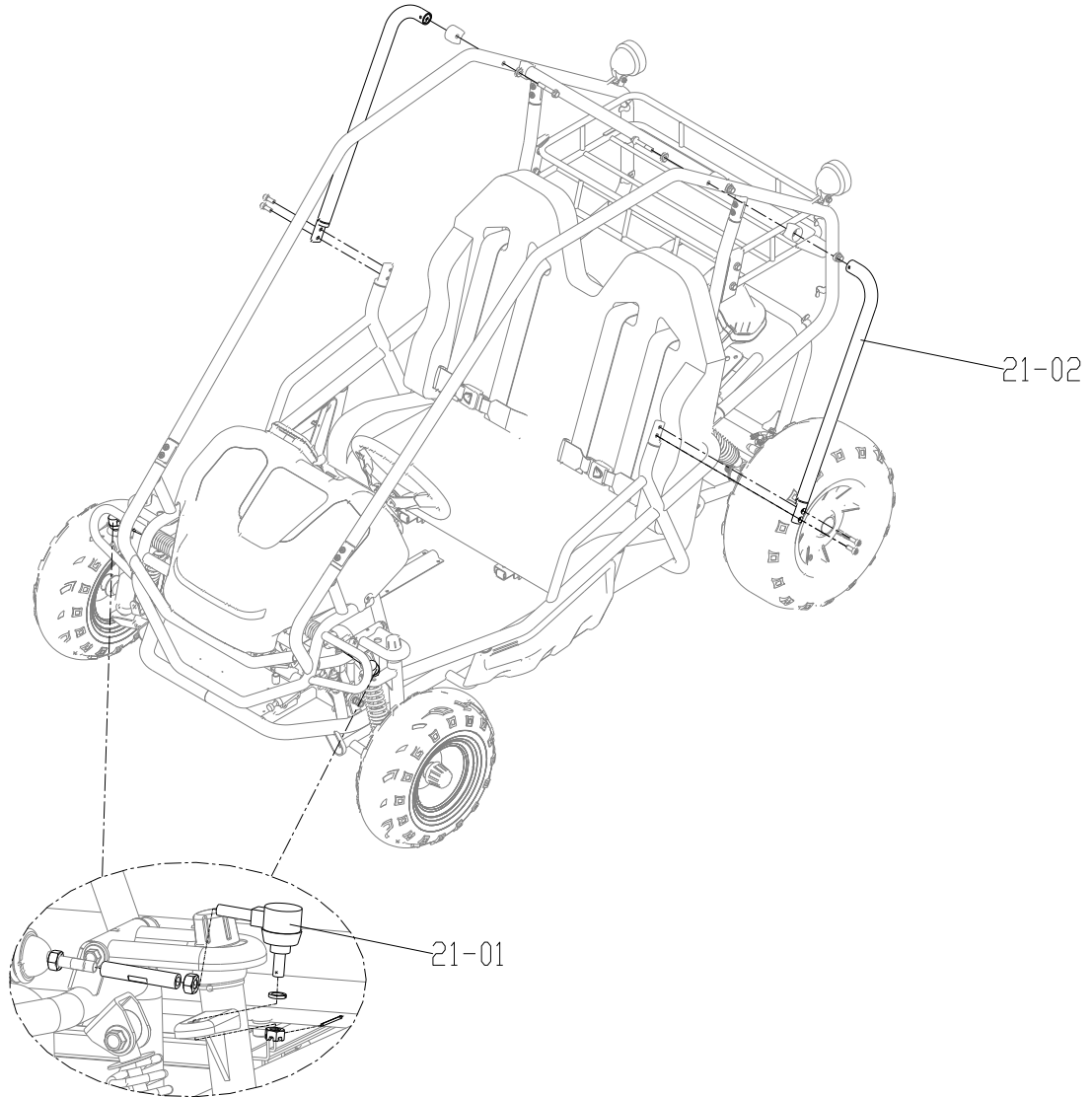
12-03

12-1

ITEM NO.	PART NO.	DESCRIPTION	QTY
12-01	R0207496-00	Nameplate Label	1
12-02	R0207497-00	60V Decorative Label	1
12-03	R0207498-00	GW Logo Label For Controller Box	1



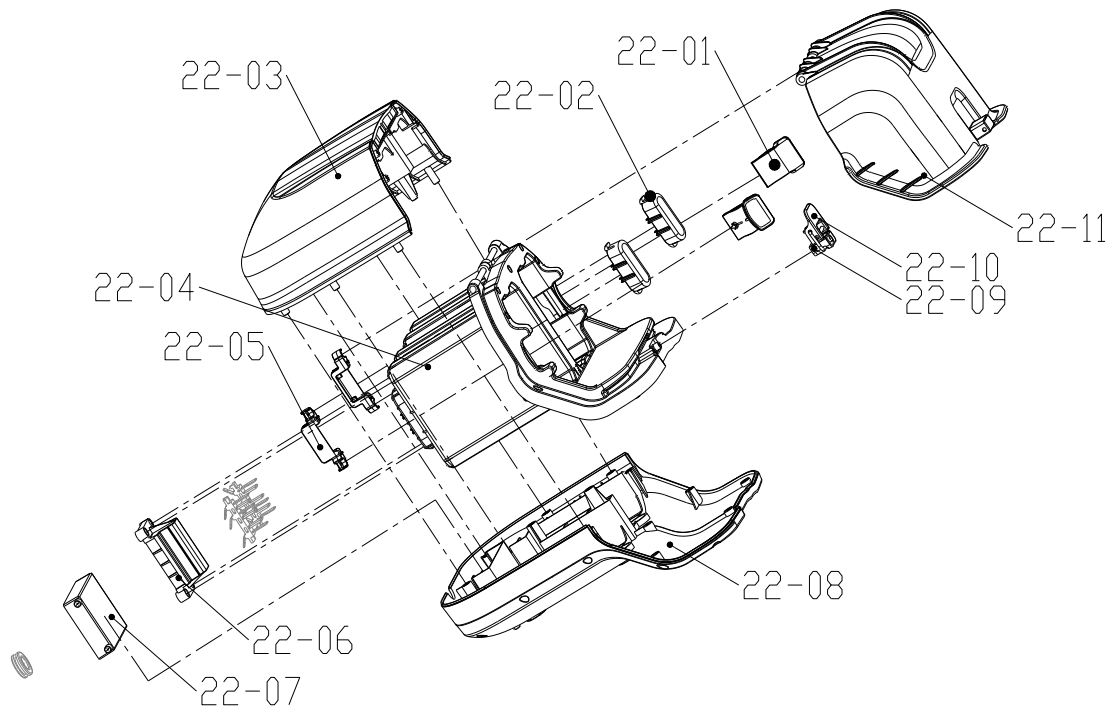
FRAME ASSEMBLY



21-1

ITEM NO.	PART NO.	DESCRIPTION	QTY
21-01	R0207009-00	Steering Ball Head	2
21-02	R0208991-00	Side Guard	2

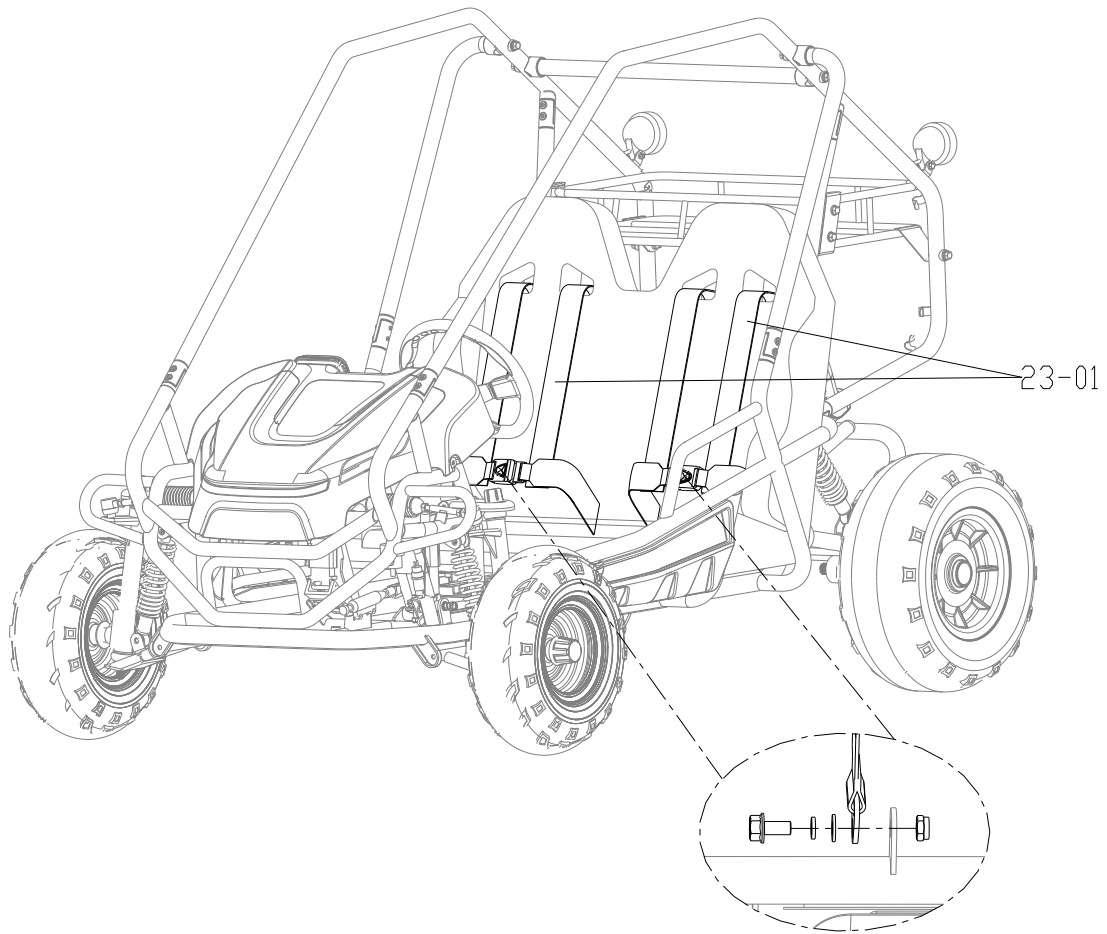
BATTERY COVER ASSEMBLY



22-1

ITEM NO.	PART NO.	DESCRIPTION	QTY
22-01	R0206736-00	Release Button	2
22-02	R0206566-00	Spring Base	2
22-03	R0206562-00	Upper Shell	1
22-04	R0206751-00	Battery Box	1
22-05	R0206560-00	Release Button Shaft Retaining Plate	2
22-06	R0206567-00	Pressing Block	1
22-07	R0206708-00	Power Board Pcba	1
22-08	R0206565-00	Lower Shell	1
22-09	R0206572-00	Latch Base	1
22-10	R0206573-00	Buckle	1
22-11	R0206570-00	Flap	1

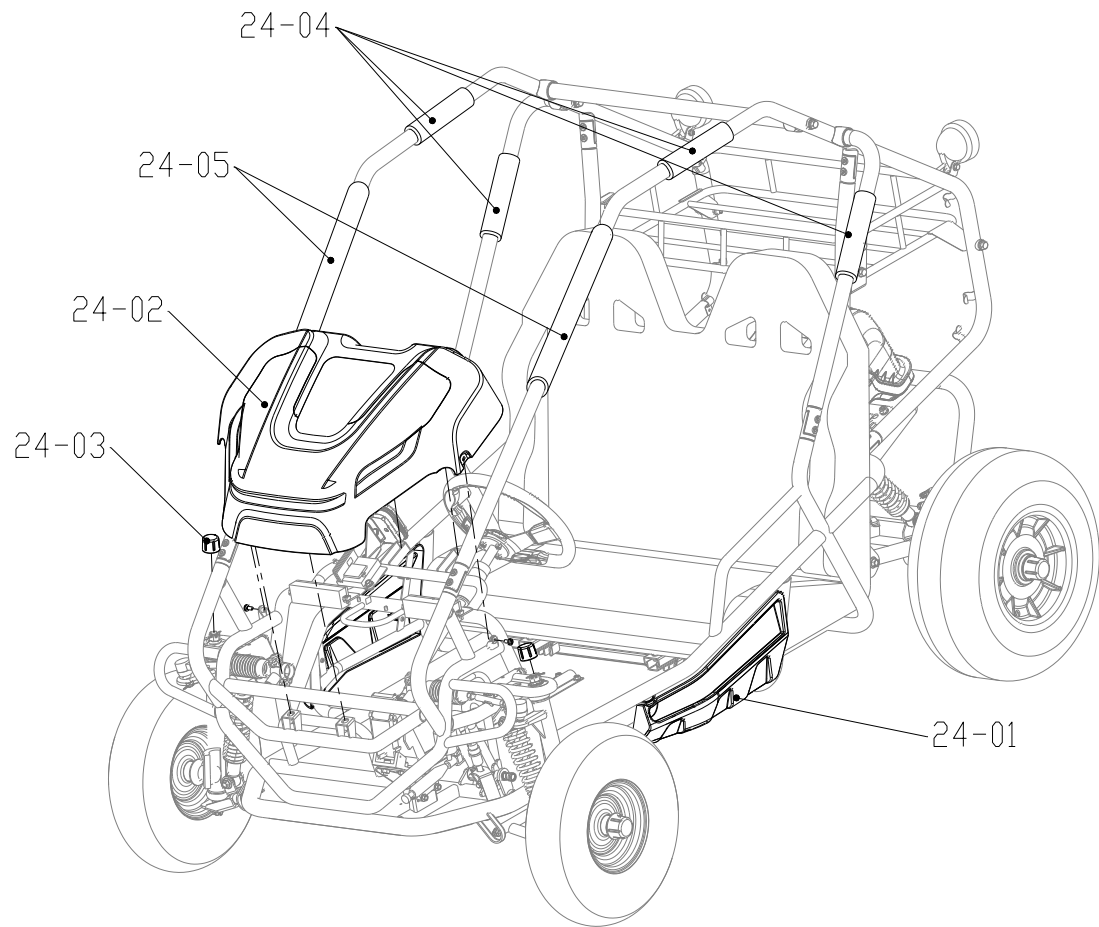
BELT ASSEMBLY



23-1

ITEM NO.	PART NO.	DESCRIPTION	QTY
23-01	R0206738-00	Seat Belts	2

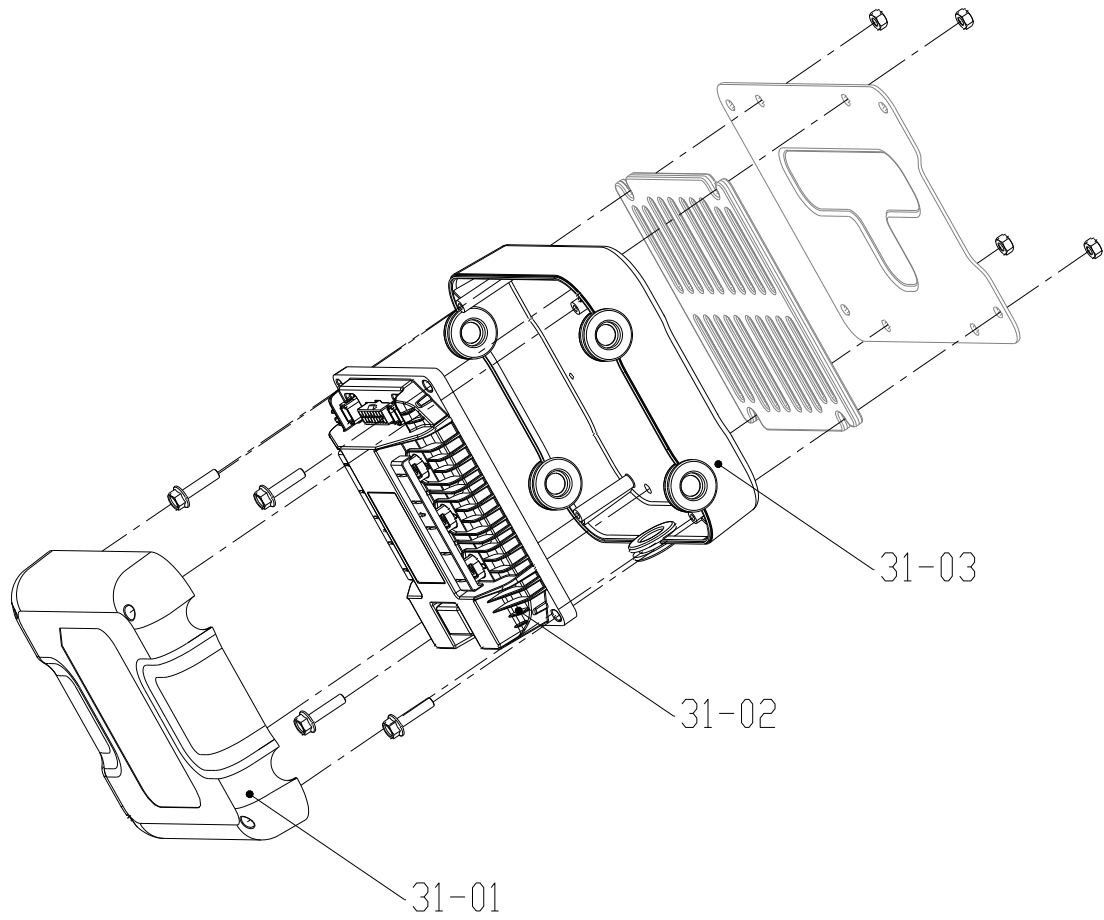
GUARDS AND PROTECTIVE PARTS



24-1

ITEM NO.	PART NO.	DESCRIPTION	QTY
24-01	R0206474-00	Side Plate(Left/Right)	1
24-02	R0206447-00	Front Cover	1
24-03	R0207055-00	Dust Cover	2
24-04	R0207430-00	Sponge Wrapping	4
24-05	R0207431-00	Sponge Wrapping	2

CONTROLLERS AND BOX PARTS

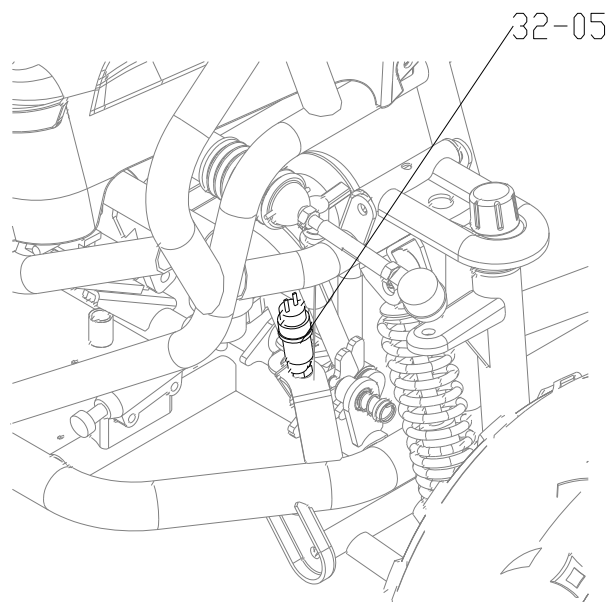
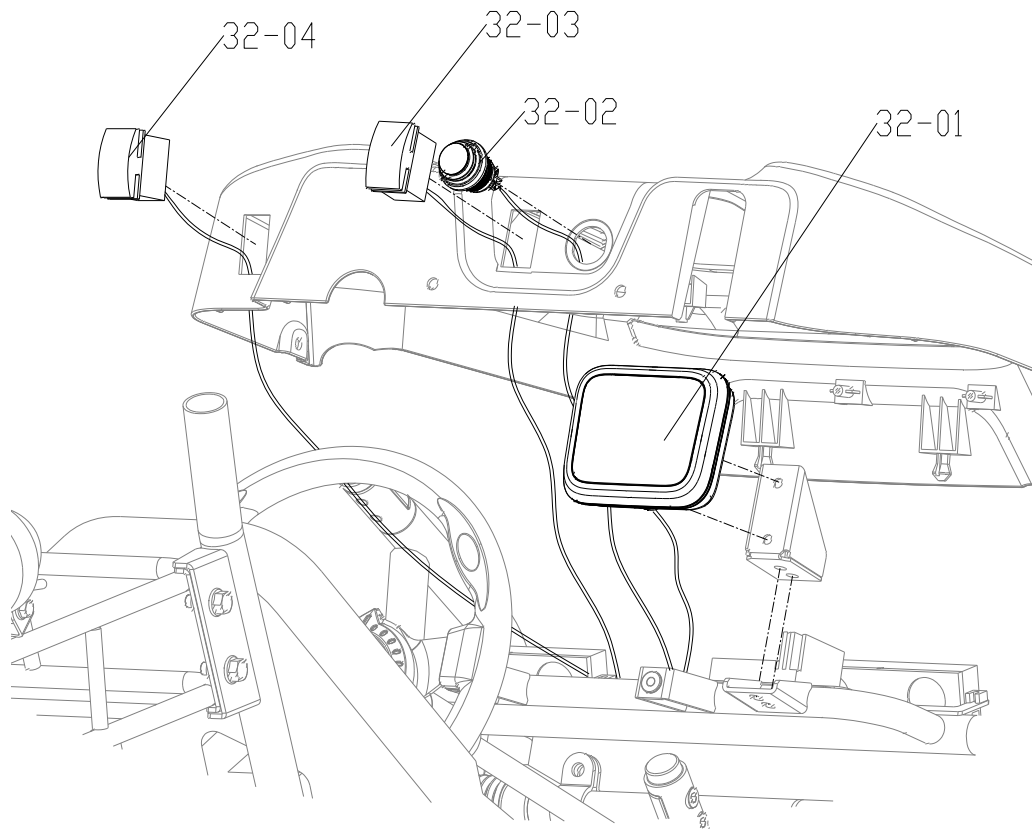


31-1

ITEM NO.	PART NO.	DESCRIPTION	QTY
31-01	R0206561-00	Controller Lower Housing	1
31-02	R0206472-00	Drive Controller	1
31-03	R0206569-00	Controller Upper Housing	1

31-2

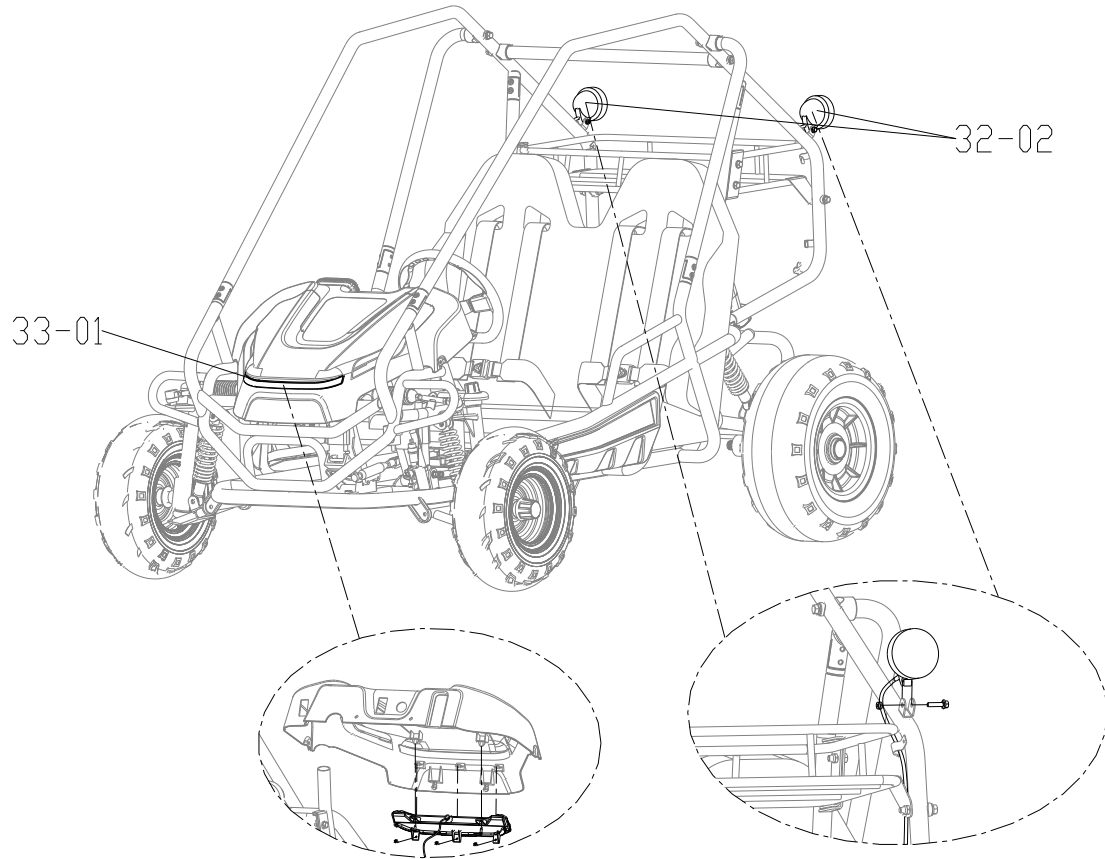
SWITCHES & METER PARTS



32-1

ITEM NO.	PART NO.	DESCRIPTION	QTY
32-01	R0206468-00	Led Dashboard	1
32-02	R0206448-00	Switch	1
32-03	R0207061-00	LED Switch	1
32-04	R0207062-00	DNR Switch	1
32-05	R0208560-00	Brake Signal Switch	1

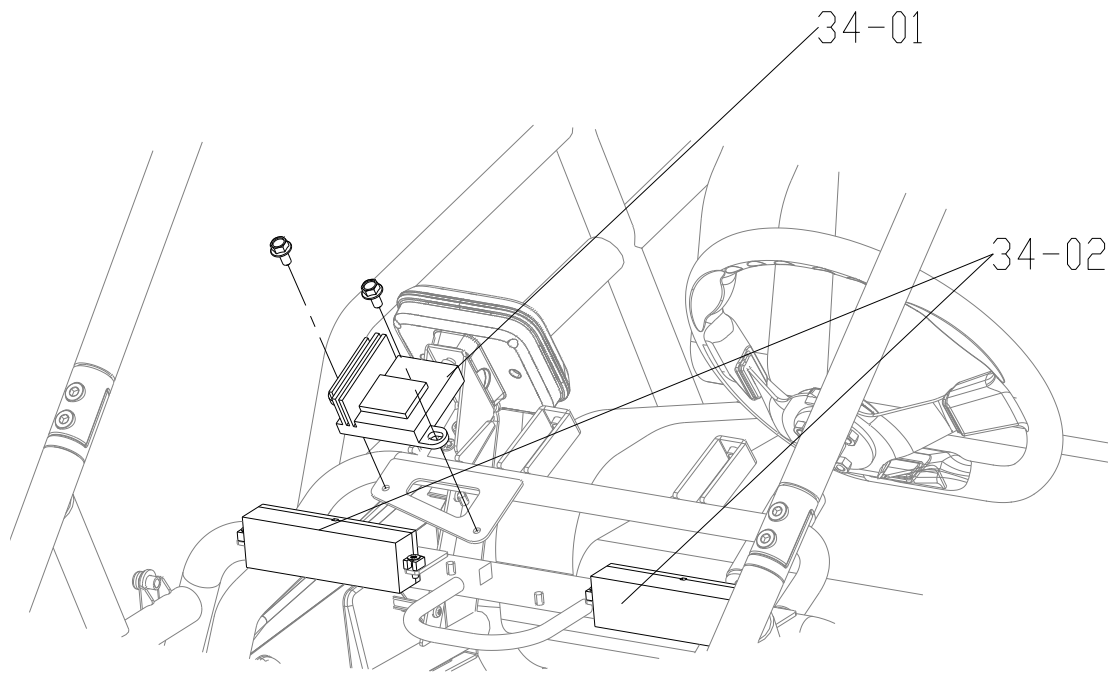
LIGHTS PARTS



33-1

ITEM NO.	PART NO.	DESCRIPTION	QTY
33-01	R0206475-00	LED Light	1
33-02	R0206739-00	Tail light	2

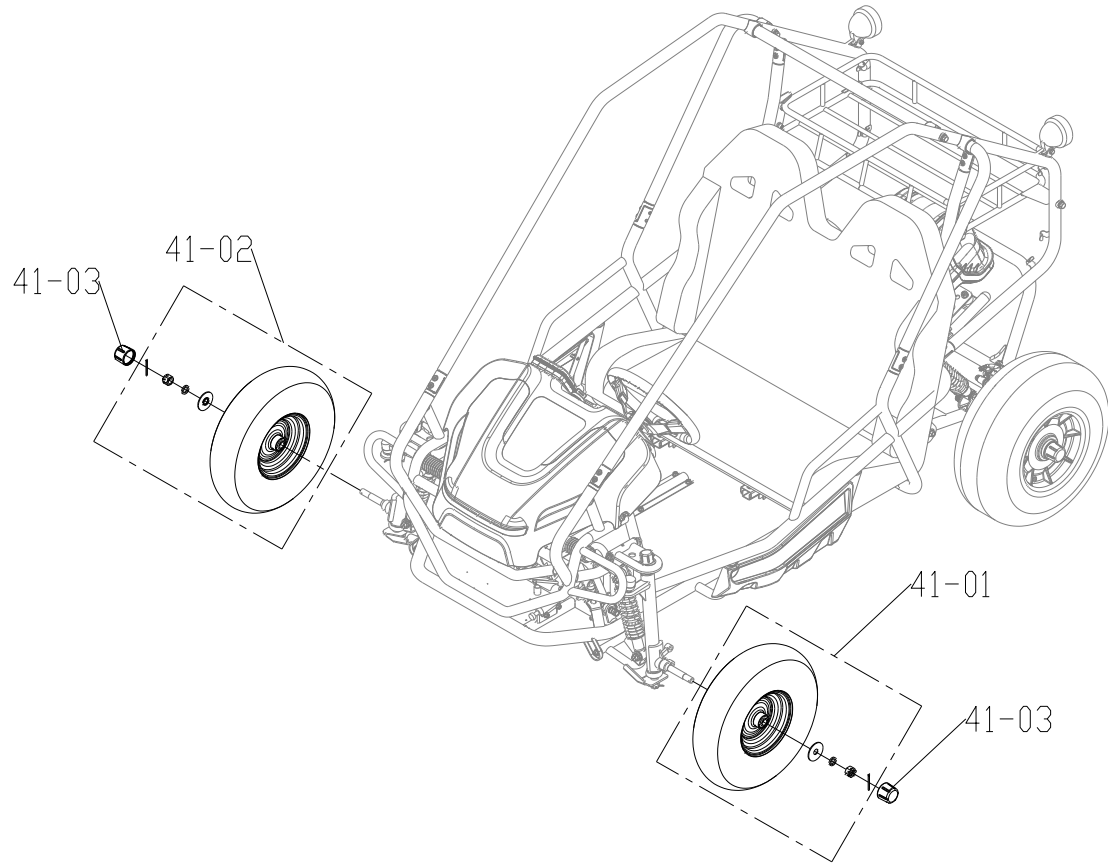
OTHERS



34-1

ITEM NO.	PART NO.	DESCRIPTION	QTY
34-01	R0206436-00	DC-DC Converters	1
34-02	R0206434-00	Speaker	2

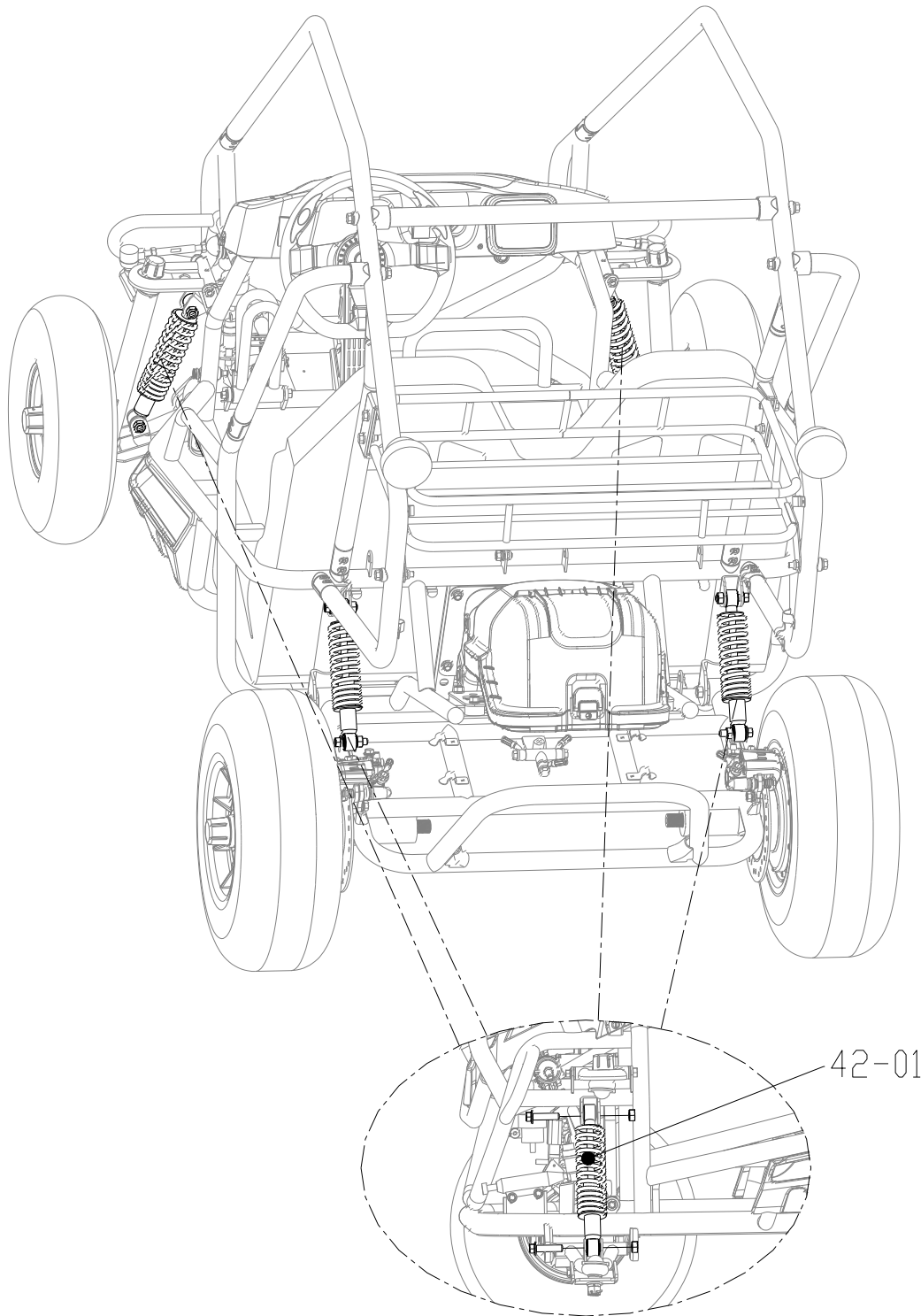
FRONT WHEEL ASSEMBLY



41-1

ITEM NO.	PART NO.	DESCRIPTION	QTY
41-01	R0208109-00	Left Front Wheel Assembly	1
41-02	R0208656-00	Right Front Wheel Assembly	1
41-03	R0207054-00	Dust Cover	2

SHOCK ABSORBER ASSEMBLY

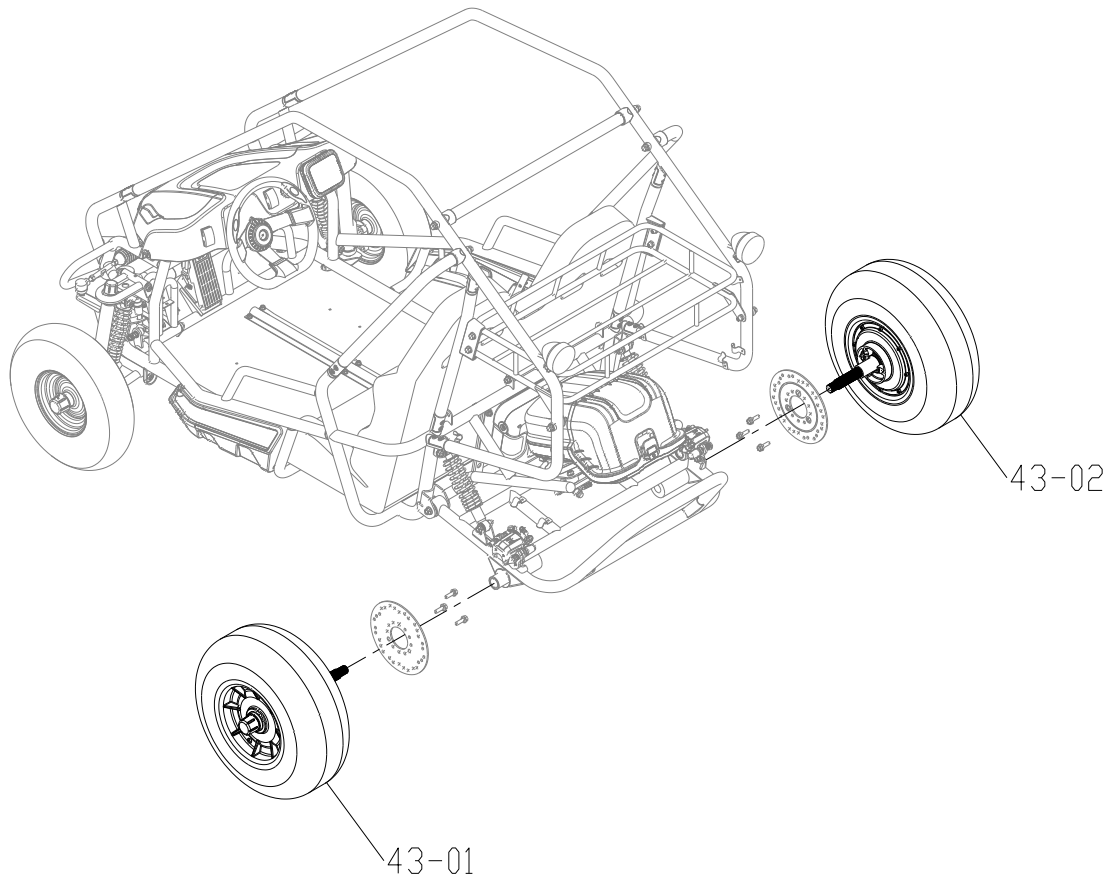


42-1

ITEM NO.	PART NO.	DESCRIPTION	QTY
42-01	R0206467-00	Shock Absorber Assembly	4

42-2

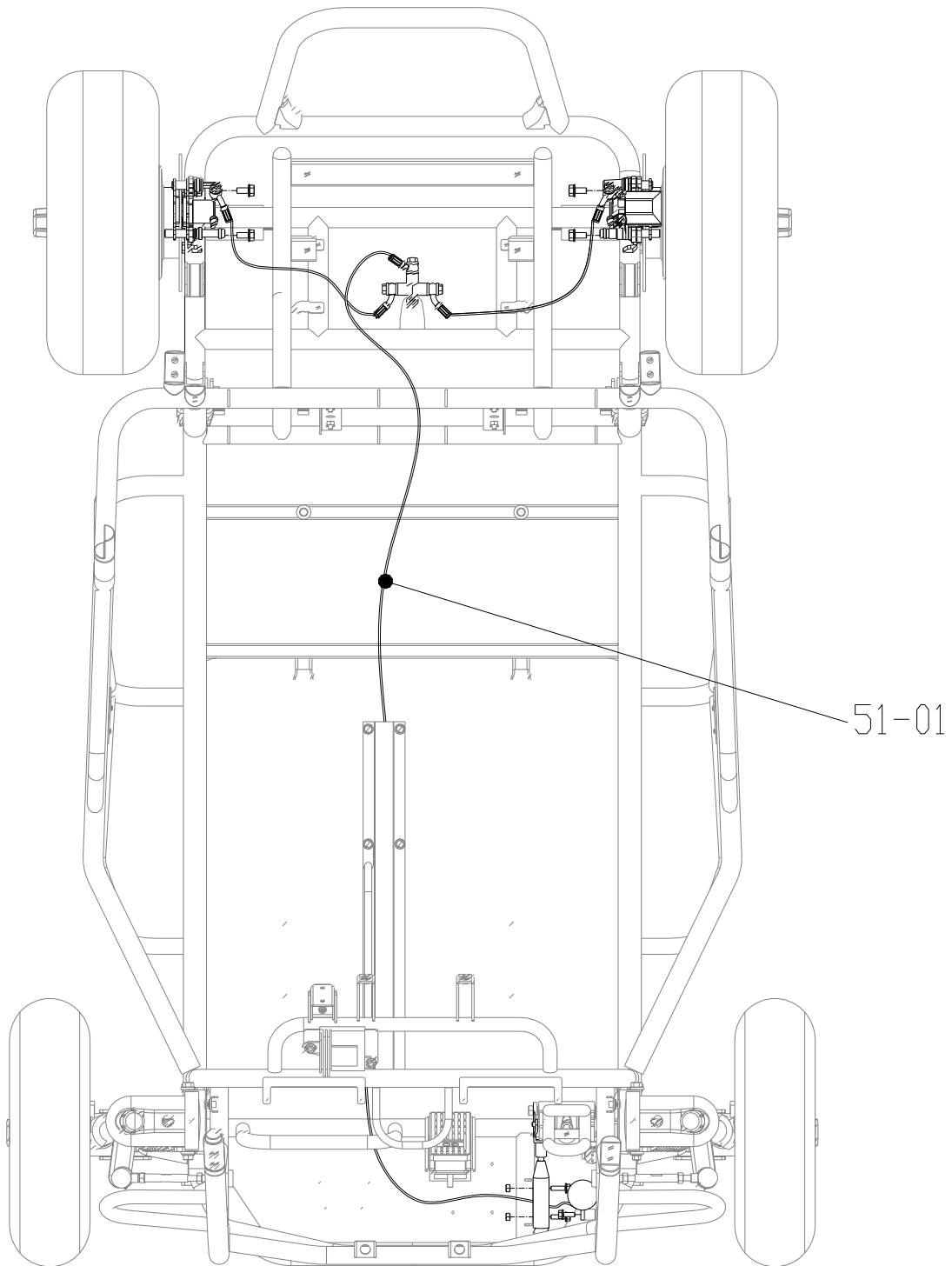
DRIVE MOTOR



43-1

ITEM NO.	PART NO.	DESCRIPTION	QTY
43-01	R0208110-00	Left Hub Motor Assembly	1
43-02	R0208657-00	Right Hub Motor Assembly	1

BRAKING SYSTEM

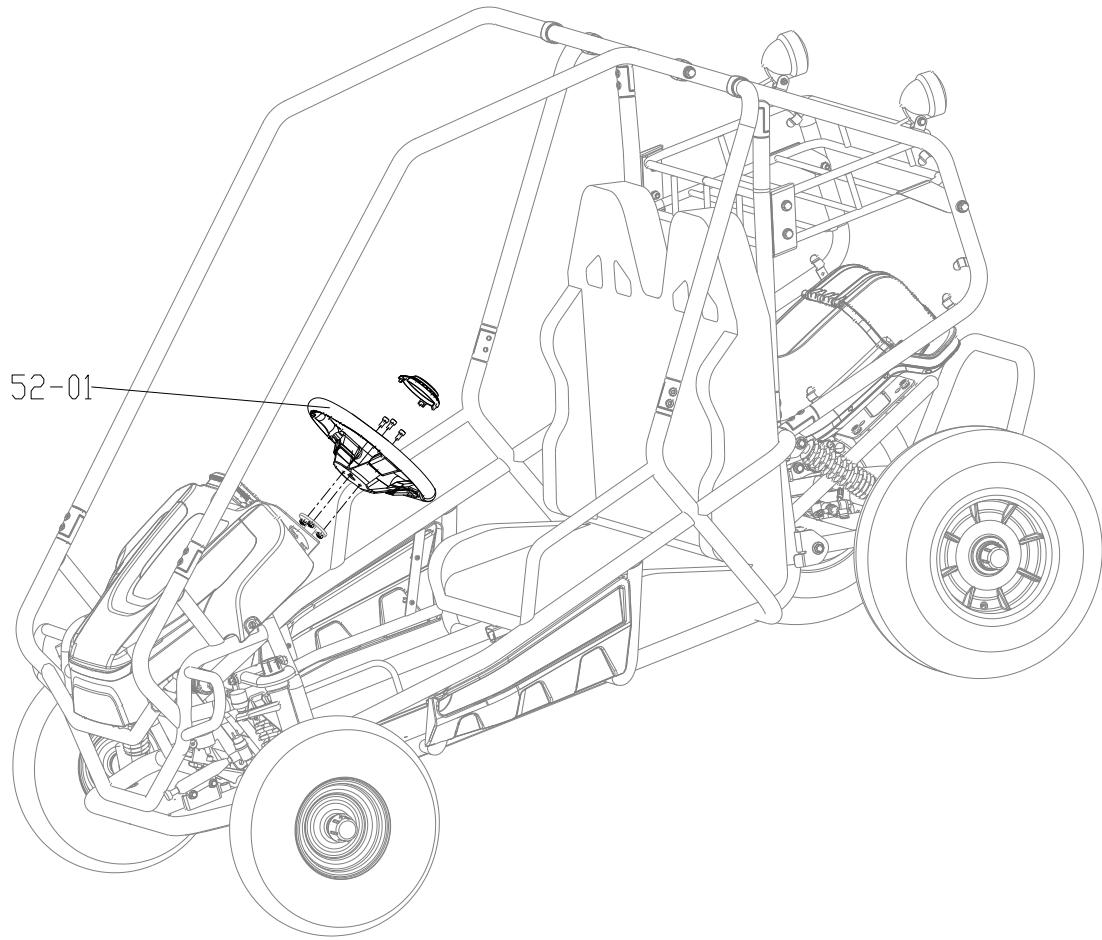


51-1

ITEM NO.	PART NO.	DESCRIPTION	QTY
51-01	R0206469-00	Brake Assembly	1

51-2

STEERING WHEEL ASSEMBLY

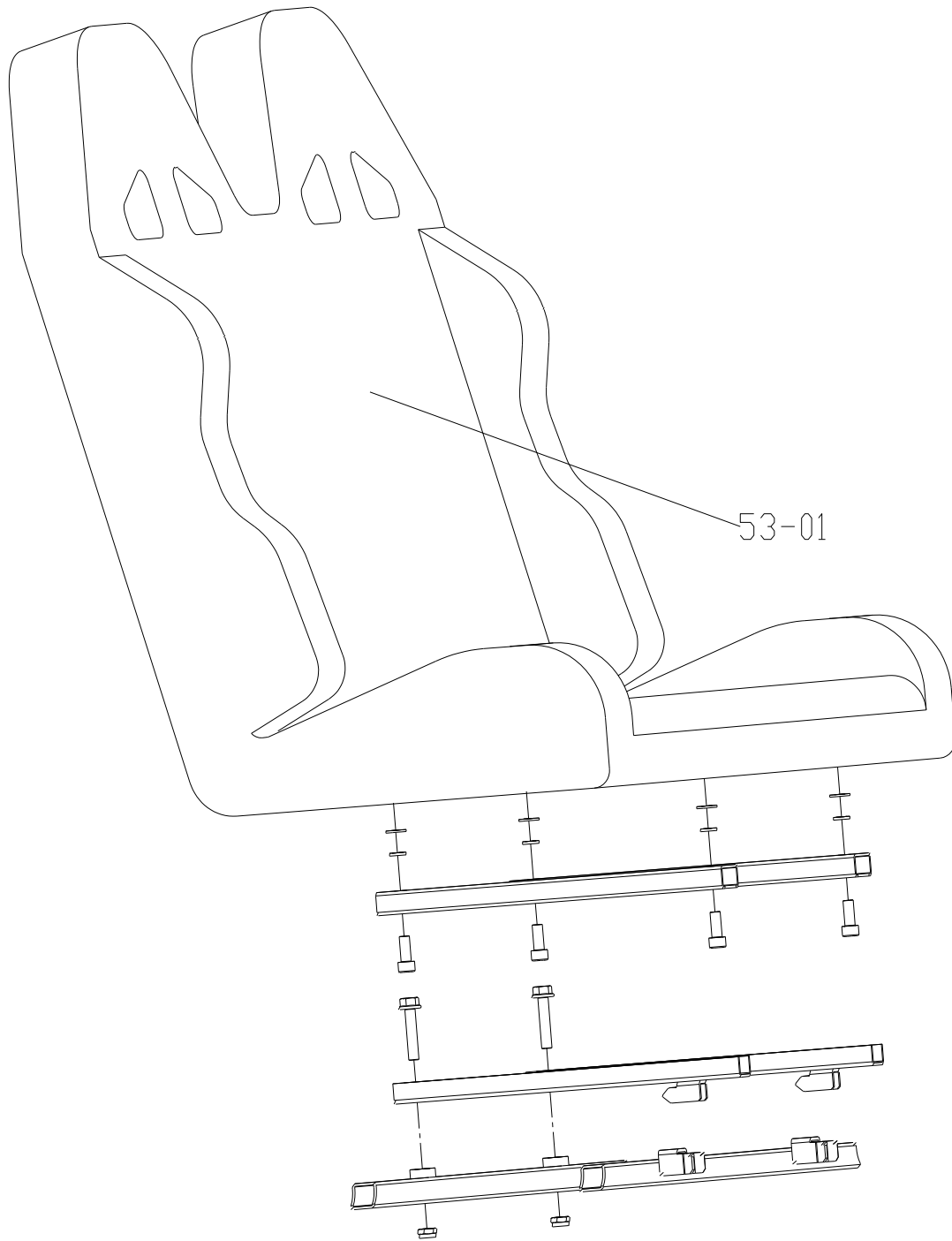


52-1

ITEM NO.	PART NO.	DESCRIPTION	QTY
52-01	R0206740-00	Steering Wheel	1

52-2

SEAT ASSEMBLY

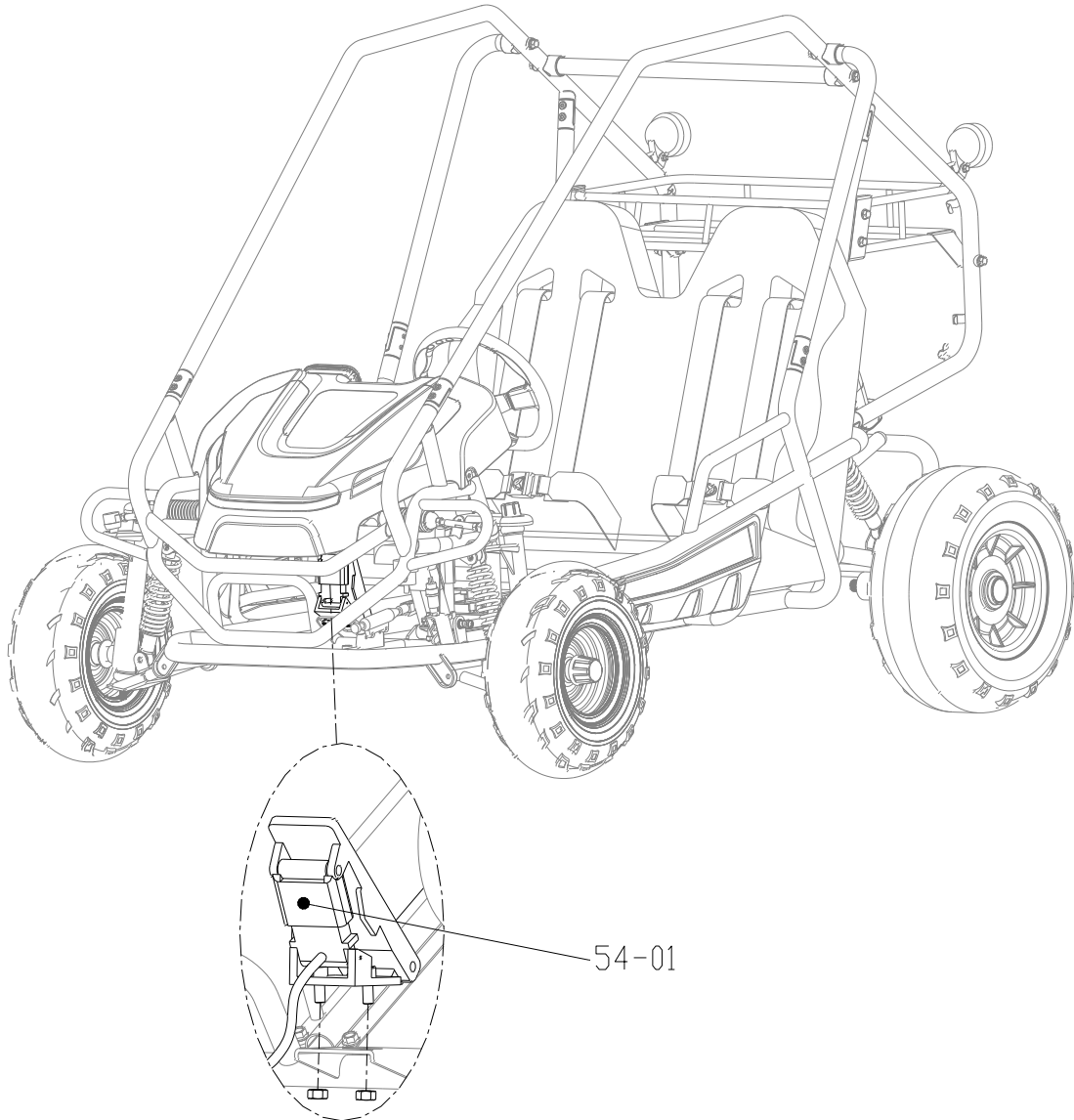


53-1

ITEM NO.	PART NO.	DESCRIPTION	QTY
53-01	R0206737-00	Seat	1

53-2

PEDALS ASSEMBLY



54-1

ITEM NO.	PART NO.	DESCRIPTION	QTY
54-01	R0207439-00	Pedals Assembly	1

54-2