



MARINE GRADE - WEATHERPROOF PADLOCK RANGE



www.squirelocksusa.com



Marine Grade Weatherproof padlocks

Squire offer a range of locks ideal for harsh weather conditions, marine environments and situations where extra weather protection is a requirement. Look out for the MARINE GRADE CP padlocks based upon Squire's extremely popular and well established CP combination lock but with the added benefit of stainless steel shackles.

This year sees the introduction of the new CP All Terrain range of padlocks. An extremely durable, rustproof, weather protected range based upon Squire's extremely popular and well established CP Range. These locks have been salt spray tested for 312 hours



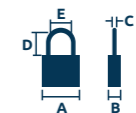
CP Marine Grade Range

- Rustproof stainless steel shackles
- Double locking
- 4 Wheels - 10,000 combinations
- Fully recodable
- Die cast alloy body cover
- Push button opening
- New patented design



All Terrain ATL Range

- Double locking
- 6mm stainless steel shackle
- All weather body cover
- Solid brass lock body
- Pin tumbler cylinder



Please contact Squire for prices
Please contact Squire for trade discount

CP Range - Marine Grade



Code	Security Rating	@	Description	Dimensions Inches					Barcode	Key Blank or No of combinations	Pack Type	RRP
				A	B	C	D	E				
CP40S	3	MARINE	1.6 Inch rustproof combi padlock - 4 wheel - stainless steel shackle	1.6	0.9	0.2	0.8	0.7	5012245029642	10,000	BLISTER	CALL
CP40S BX	3	MARINE	1.6 Inch rustproof combi padlock - 4 wheel - stainless steel shackle - Boxed	1.6	0.9	0.2	0.8	0.7	5012245040227	10,000	BOX	CALL
CP50S	4	MARINE	2 Inch rustproof combi padlock - 4 wheel - stainless steel shackle	2	1	0.2	1	0.9	5012245029659	10,000	BLISTER	CALL
CP50S BX	4	MARINE	2 Inch rustproof combi padlock - 4 wheel - stainless steel shackle - Boxed	2	1	0.2	1	0.9	5012245040272	10,000	BOX	CALL
CP40S/2.5	3	MARINE	1.6 Inch rustproof combi padlock - 4 wheel - 2.5" stainless steel shackle	1.6	0.9	0.2	2.5	0.7	5012245039351	10,000	BLISTER	CALL
CP50S/2.5	4	MARINE	2 Inch rustproof combi padlock - 4 wheel - 2.5" stainless steel shackle	2	1	0.2	2.5	0.9	5012245039429	10,000	BLISTER	CALL
CP50S.2.5 BX	4	MARINE	2 Inch rustproof combi padlock - 4 wheel - 2.5" stainless steel shackle	2	1	0.2	2.5	0.9	5012245040357	10,000	BOX	CALL



All Terrain Padlocks - Marine Grade

ATL42SM	3	MARINE	All Terrain 1.6 inch brass padlock stainless shackle	1.7	20	0.2	0.8	0.9	5012245040036	KB LN C SL	BLISTER	CALL
ATL52SM	4	MARINE	All Terrain 2 inch brass padlock stainless shackle	2.3	25	0.34	1.1	1.1	5012245040043	KB LN C SL	BLISTER	CALL
ATL42SMKA1	3	MARINE	All Terrain 1.6 inch KA brass padlock stainless shackle key differ No. 24342	1.7	20	0.2	0.8	0.9	5012245040043	KB LN C SL	BOX	CALL
ATL52SMKA1	4	MARINE	All Terrain 2 inch KA brass padlock stainless shackle key differ No. 24342	2.3	25	0.34	1.1	1.1	5012245040067	KB LN C SL	BOX	CALL



All Terrain combination locks - **NEW** ideal for the harshest environments

COMING SOON

The new CP All Terrain locks combine all of the features of Squire's highly popular CP combination range with added weather protection features. Seriously tough locks, built to withstand the harshest of weather conditions and challenging environments. Tested to 312 hours Salt Spray. Available in RUSTPROOF light blue version (Coming soon). Standard and long shackle variants available.

Features

Angled engineered shackle, available in either stainless steel or hardened steel with anti-corrosion finish

Robust body protective body cover

4 Wheels giving over 10,000 combinations

Fully recodable

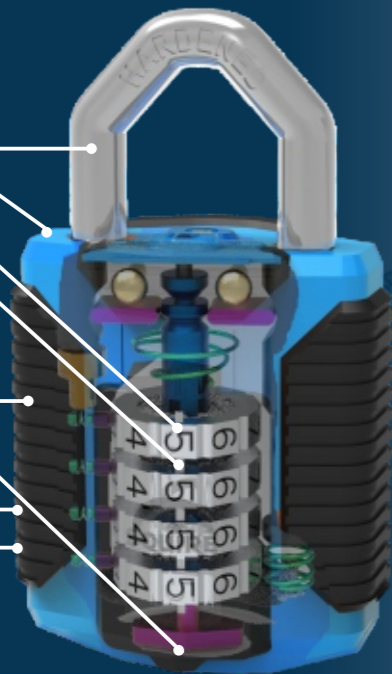
Lift up protective cover over wheels

Ergonomic rubber sides for better grip in wet conditions

Angled open close button provides easier opening of lock

Salt spray tested for 312 hours

Patented



CP All Terrain Stainless Shackles **Rustproof**

Rustproof version with stainless steel shackle. Ideal for marine applications. Available soon



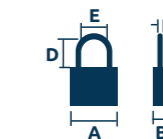
Passed 312 Hour Salt Spray Test



All Weather



All Terrain



CP50 All Terrain Open Shackle

Code	Security Rating	@	Description	Dimensions Inches					Barcode	Number of Combinations	Pack Type	RRP
				A	B	C	D	E				
CP50/ATLS	4	MARINE	2 Inch combination padlock - 4 Wheel - protective cover	2	1.4	0.3	0.9	0.9	5012245039047	10,000	BOX	CALL
CP50/ATLS/2.5	4	MARINE	2 Inch 2.5" shackle combination padlock - 4 Wheel - protective cover	2	1.4	0.3	2.5	0.9	5012245039054	10,000	BOX	CALL

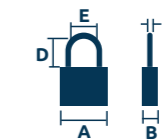
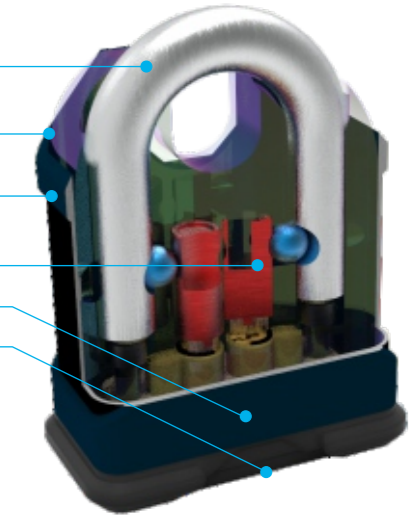


Stronghold® Marine range of extra high security padlocks

A range of super-tough, high security padlocks tested to the limits in-house and approved by independent accreditation bodies CEN, LPCB, Sold Secure and Secured by Design. Made in Britain, these padlocks com in a variety of body widths and shackle versions.

Features

- Hardened boron alloy steel shackle
- Solid hardened steel lock body
- Electrophoretic anti-corrosion finish
- 6 pin cylinder - over 250,000 key differs
- Anti-drill protection
- Protective dust cover



Stronghold® SS50 Marine Range - 2 Inch Wide Body



SS50S MARINE

SS50CS MARINE



Rustproof shackle



Marine Grade

Code	CEN	Security Rating	@	Description	Dimensions Inches					Barcode	Key Blank	Pack Type	RRP	MK
					A	B	C	D	E					
SS50CS/MARINE	CEN 3	8	WORK	2 Inch closed stainless steel shackle lock 6 pin (S) cylinder	2	1	0.4	0.6	0.6	Special	KB P6	BOX	CALL	■
SS50S/MARINE	CEN 3	8	WORK	2 Inch open stainless steel shackle lock 6 pin (S) cylinder	2	1	0.4	1	0.9	Special	KB P6	BOX	CALL	■
SS50CP5/MARINE	CEN 3	8	WORK	2 Inch closed stainless steel shackle lock 5 pin (P5) cylinder	2	1	0.4	0.6	0.6	Special	KB P5	BOX	CALL	■
SS50P5/MARINE	CEN 3	8	WORK	2 Inch open stainless steel shackle lock 5 pin (P5) cylinder	2	1	0.4	1	0.9	Special	KB P5	BOX	CALL	■
SS50CS/MARINE/KA	CEN 3	8	WORK	2 Inch closed stainless steel shackle lock 6 pin (S) keyed alike cylinder	2	1	0.4	0.6	0.6	Special	KB P6	BOX	CALL	
SS50S/MARINE/KA	CEN 3	8	WORK	2 Inch open stainless steel shackle lock 6 pin (S) keyed alike cylinder	2	1	0.4	1	0.9	Special	KB P6	BOX	CALL	
SS50CP5/MARINE/KA	CEN 3	8	WORK	2 Inch closed stainless steel shackle lock 5 pin (P5) keyed alike cylinder	2	1	0.4	0.6	0.6	Special	KB P5	BOX	CALL	
SS50P5/MARINE/KA*	CEN 3	8	WORK	2 Inch open stainless steel shackle lock 5 pin (P5) keyed alike cylinder	2	1	0.4	1	0.9	Special	KB P5	BOX	CALL	



240|YEARS
OF LOCKMAKING EXCELLENCE

www.squirelocksusa.com

Tel: . +1 754 300 5210

E-Mail: support@squirelocks.com

Henry Squire & Sons USA LLC, 123 West Rainbow Road, West Jefferson, NC, 28694