



Wall-Mounting Tire Rack Model 110104

Instruction Manual
&
Parts List



Read and understand this entire manual before assembling, installing, operating, or servicing this product.

SAVE THIS MANUAL

Copyright[®] 2023 by AVITEC. All rights reserved. No portion of this manual or any artwork contained herein may be reproduced in any shape or form without the express written consent of AVITEC. Due to continuing improvements, actual product may differ slightly from the product described herein. Tools required for assembly and maintenance may not be included.

IMPORTANT SAFETY INFORMATION

This is a **SAFETY ALERT** symbol.



It is used to alert you to potential personal injury hazards. Obey all safety messages that follow this symbol to avoid possible injury or death.



DANGER indicates a hazardous situation which, if not avoided, will result in death or injury.



WARNING indicates a hazardous situation which, if not avoided, could result in death or serious injury.



CAUTION indicates a hazardous situation which, if not avoided, could result in minor or moderate injury.



NOTICE indicates important information which, if not followed, may cause damage to equipment.

SAVE THIS MANUAL

Keep this manual for the safety warnings and precautions. The manual offers important information on how to assemble, use and maintain this product.

Write the product's model number and purchase date on the cover page of this manual.

Keep this manual (and your purchase receipt) in a safe place.

UNPACKING

The shipment should be thoroughly inspected as soon as it is received. The signed "bill of lading" is acknowledgement by the carrier of receipt in good condition or shipment covered by our invoice. For your own protection, if any of the goods called for on the bill of lading are shorted or damaged, do not accept them until the carrier makes a notation on the freight bill of the shorted or damaged goods.

Notify AVITEC immediately if any hidden loss or damage is discovered after receipt.

Definition of Symbols



WARNING concerning Risk of Eye Injury. Wear ANSI approved eye protection.



WARNING concerning Risk of Hearing Loss. Wear hearing protection.



IMPORTANT SAFETY INSTRUCTIONS

1.



Read and understand all safety warnings and instructions. Failure to follow the warnings and instructions may result in serious injury or death. Save all warnings and instructions for future reference.

2. Personal and Work Area Safety

A.



Always wear ANSI approved safety goggles.

B.



Always wear hearing protection when working in noisy environments. Prolonged exposure to high intensity noise can cause hearing loss.

C.



Use safety equipment. Safety shoes, hard hat and work gloves must be used for applicable conditions.

D. **Dress appropriately.** Never wear loose fitting clothing or jewelry when working. Contain long hair, and keep hair, clothing and gloves away from moving parts.

E. **Use common sense when working.**

Stay alert and concentrate when setting up and using the Tire Rack. Never work while under the influence of alcohol, drugs or medications.

Personal and Work Area Safety (continued)

F. While assembling and using the Tire Rack keep work area clean and well lighted. Keep spectators and children out of the work area.

3. Use of the Tire Rack


A. Do not modify the Tire Rack and do not use this product for purposes that it was not designed for.

B. Never exceed the maximum load capacity of 375 Lbs. Center the load on the rack - to equalize torsional stress. The Tire Rack is designed to hold up to 4 extra wide tires (each tire less 12" wide).

C. Be aware of the danger of "dynamic loading". This situation arises when a load is dropped onto the Tire Rack, resulting in a short term excessive load. Dynamic loading can result in damage and failure of the Tire Rack and personal injury to the person loading the Tire Rack.

D. Keep children and spectators away when loading and unloading the Tire Rack.

E. Only set up the Tire Rack against a wall that has vertical studs and is capable of supporting the weight of this product and its maximum load capacity of 375 Lbs. Locate this product in a safe area, away from all flammable materials.

F.  **WARNING** This product requires some assembly and set-up. If you are not experienced or capable of doing this type of assembly and set-up work, the Tire Rack should be assembled and set-up by a qualified service technician.

G. Periodically check that all hardware is tight and secure. If any damage to the structure of the Tire Rack is noted, the product should be replaced.

H. Work safely. When drilling holes to mount this product make sure that there are no hidden utility lines or pipes in the drilling path.

Maintain labels and nameplates on the Tire Rack. They contain important information and must always remain readable. Contact AVITEC for replacements.

Keep in mind that the warnings previously discussed cannot cover all possible conditions or situations that could occur. It is important that the person setting up and using this product understand that common sense and caution are factors which cannot be built into this product, and must be supplied by the person(s) using this product.

Limited Warranty

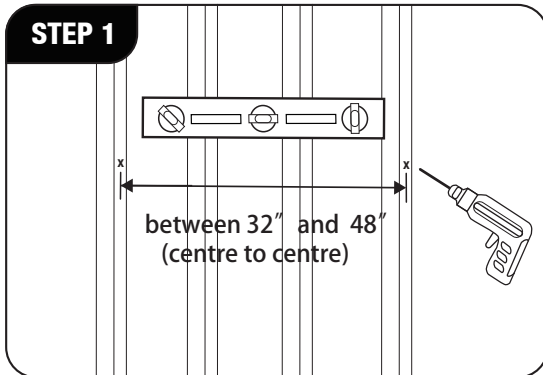
AVITEC warrants to the original retail purchaser that the product is free of defects in material and workmanship at the time of shipment. This Tire Rack is warranted for 90 days from the date of purchase. This warranty is expressly in lieu of all other warranties, express or implied.

Proof of purchase is required for warranty transactions; a copy of the original invoice or sales receipt is required.

Assembling and Setting Up the Tire Rack



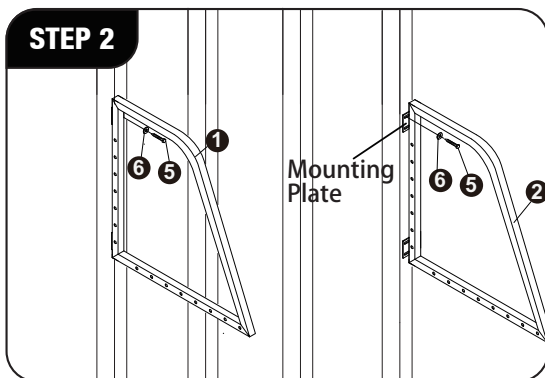
Always wear ANSI approved safety goggles.



1. Plan for the proper location of the tire rack. The product must be attached to a wall surface with vertical studs, and the supports will be positioned between 32" and 48" (centre to centre) apart. Use a stud finder (not included) to find the desired mounting position, and measure the desired width of the Tire Rack depending on the size of the tires to be placed on the rack.

Note: the tire rack must be mounted directly into the wall studs; do not use wall anchors to mount to sheetrock.

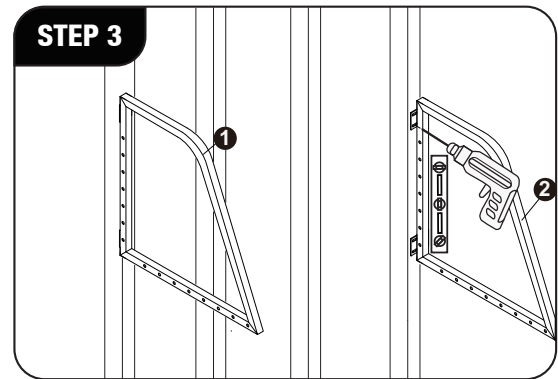
Note: make sure the pilot holes that are pre-drilled are long enough, at least longer than the lag screws provided.



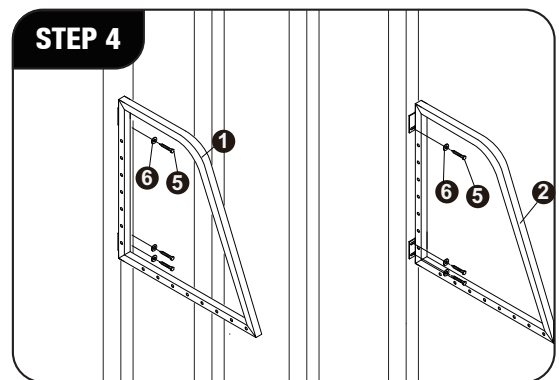
2. Slide Washer (6) onto the Lag Screw (5); insert Lag Screw (5) through the top mounting hole of each Frame to hold in place using a 13 mm wrench (not included). Do not tighten Lag Screw (5) completely at this time.

Note: Identify Left Frame and Right Frame using the marking sticker on each, making sure the Mounting Plates are facing the inside.

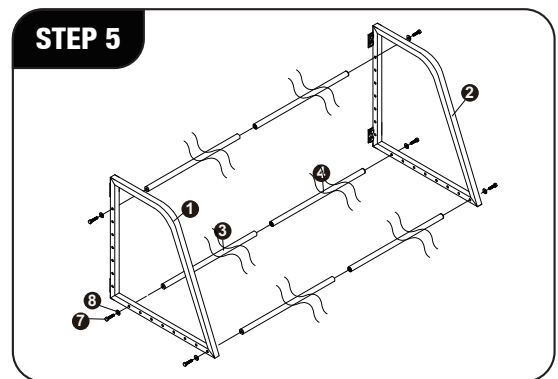
Note: Don't use an impact driver.



3. Make sure Left Frame (1) and Right Frame (2) are vertically level using a level. Use the remaining 3 mounting holes in each as template, and drill the holes in the wall studs.



4. Insert three more lag screws (5) and washer (6) in each frame to secure in place. Do not tighten Lag Screws (5) completely at this time.

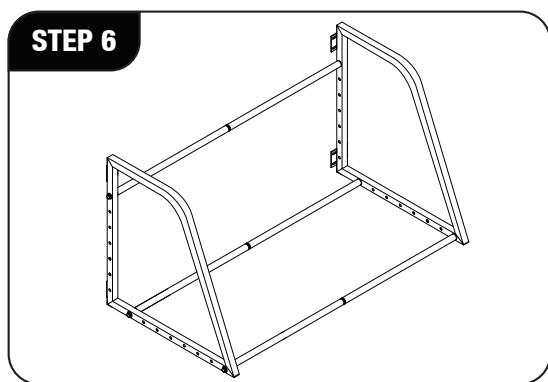


5. Insert Small Round Tube (4) into Large Round Tube (3), getting three Round Tube Assemblies. Place one Round Tube Assembly at the back of the rack at the desired height to protect the wall from tire rub. Attach both ends to Left Frame (1) and Right Frame (2) using the Hex Bolts (7) and Washers (8).

Attach the remaining two Round Tube Assemblies to Left Frame (1) and Right Frame (2) at the desired positions, so the tires can sit deeply enough to stand upright securely, using the Hex Bolts (7) and Washers (8).

Now fully tighten Lag Screws (5) into the wall studs using a 13 mm Wrench (not included).

Note: Don't overtighten the Lag Screws (less than 10 ft-lb). Do not use an impact driver.



6. Check for tightness of all hardware. The Tire Rack is ready for use.

Maintenance

Before each use, check for tightness of all hardware. Frequently check the condition of the Tire Rack. Make sure all components are in good condition. If the Tire Rack becomes damaged through accident, or if any damage is noted, the product should be replaced.

Keep the Tire Rack clean of dirt, grease and oil. Clean with a moist cloth and mild detergent.

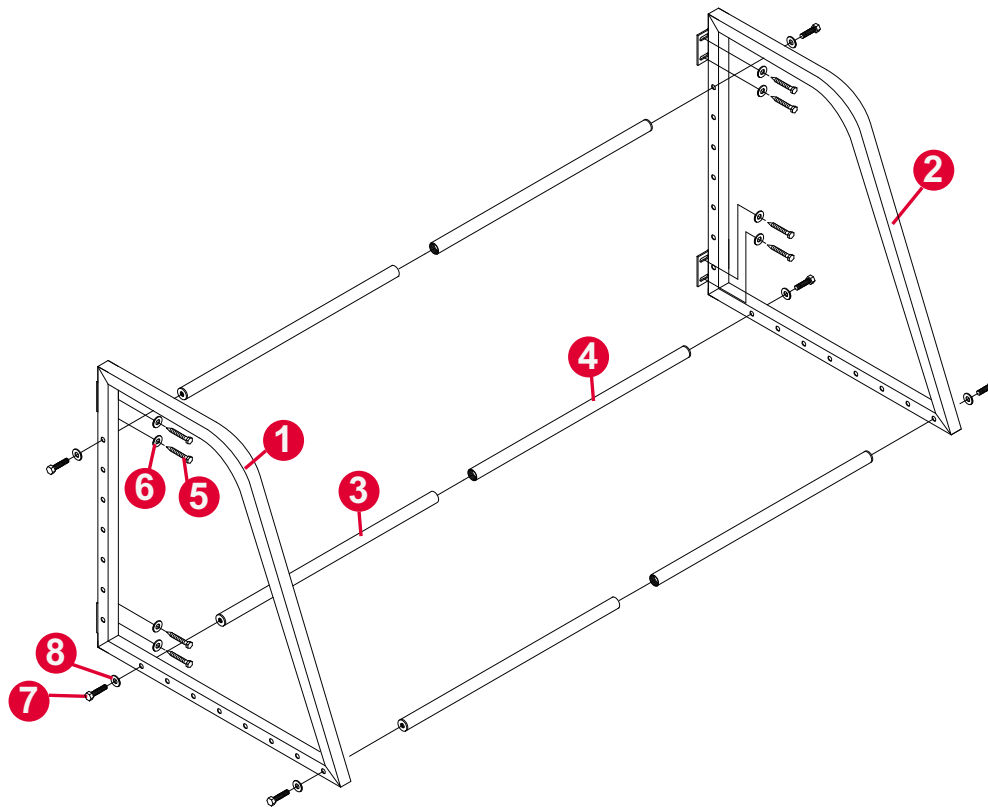
Parts List

Part #	Description	Qty
1	Left Frame	1
2	Right Frame	1
3	Large Round Tube	3
4	Small Round Tube	3
5	Lag Screw M8x60	8
6	Washer 8	8
7	Hex Bolt M10x55	6
8	Washer 10	6

SPECIFICATIONS

Maximum Load Capacity	375 Lbs.
Width Adjustment	From 32" to 48"
Capacity	Holds up to 4 extra wide vehicle tires, each tire less 12" wide.

Assembly Diagram



Note: The Parts List and Assembly Diagram is provided as a reference tool only. Some parts are listed and shown for illustration purposes only, and are not available as replacement parts. All repairs to this tool (including replacing parts) should only be done by a qualified service technician.

Manufactured and Distributed by: Avitec Towing and
Garage Equipment
Camarillo, CA 93012, U.S.A
www.avitecusa.com
Customer service hours 9:00 am-4:00 pm, Monday-
Friday, PST., 1-805-385-9888