

# Installation/Operation Instructions

5535002

## Replacement Tailgate Spreader for DumperDogg® (Steel, Stainless Steel, or Poly)



This symbol points out important safety instructions which, if not followed, could endanger the personal safety and/or property of yourself and others. Read and follow all instructions in this manual before attempting to install or operate this spreader. Failure to comply with these instructions may result in personal injury. When you see this symbol. HEED ITS WARNING!

### DANGER

This spreader was built to be operated according to the safe operation practices in this manual. As with any type of power equipment, carelessness or error on the part of the operator can result in serious injury. This spreader is capable of amputating hands and feet and throwing objects. Failure to observe the following safety instructions may result in serious injury or death.

### WARNING

Improper installation and operation could cause personal injury, and/or property damage. Observe the following Safety Precautions before, during and after operating this spreader. By following these precautions and common sense, possible injury to persons and potential damage to this spreader may be avoided

### Safety Precautions

- Ensure unit is mounted properly and latch pins are fully engaged to dump bed before use.
- Never insert hands or limbs into unit while operating. Serious injury or death can occur.
- Always disconnect power before servicing or adjusting unit.
- Never modify spreader. Warranty will be void.
- Never use spreader for anything other than salt, sand, or calcium products.
- Keep fingers and limbs away from spinner and augers during operation.
- Ensure there is proper clearance between the spinner assembly and bottom of spreader housing during lifting of the dump bed. On some vehicles the bed cannot be lifted the full 45 degrees.
- Always inspect hardware before every use to ensure bolts and nuts have not loosened.
- Never operate vehicle with dump bed in full upright position.



### Tailgate Assembly Instructions

1. After receiving your tailgate spreader, confirm that no damage occurred during shipping and that all components and hardware have been delivered. See packing list for complete breakdown of hardware.
2. Remove the tailgate from your dump body and store it in a safe location.
3. Using the hook on the top of the spreader and a proper chain, lift the spreader into position for installation. Position the spreader at the rear of the dump body, centered, and with the spreader slightly above the surface of the bed.

**NOTE: The spreader should be lifted using the hook on the top of the spreader.**

4. Install the main spreader assembly on Dump Body and ensure all four latch pins are fully engaged. When assembling to a poly DumperDogg dump body, remove the adapter plates from the upper latch receptacles before assembling.
5. Install the spinner assembly by inserting the receiver bracket into the 2-inch receiver tube on the vehicle. Select height adjustment holes to position the spinner assembly so that the dump body will clear the top of the material guide when it is fully raised. Secure the bracket in position with hitch pins.
6. A skirt kit (3016927) is included with the spreader. The skirt kit is designed to be placed between the spreader and the truck to keep salt out of the truck bed. Installation of the skirt is optional and at user's discretion.

### Electrical Installation Instructions

#### WARNING

Do not drill holes into fuel tanks, fuel lines, through electrical wiring, etc. that may be damaged by drilling. To ensure proper performance of your spreader, check the condition of truck's electrical system. Using digital voltmeter, check alternator and battery voltage. With engine running and head lights and heater fan ON, good voltage reading should fall between 13.0 and 15.3 volts. If voltage reading falls out of this range, check and adjust your electric system.

—continued inside

**NOTE: Always disconnect battery before attempting to install electrical components on your vehicle**

1. Locate control box, all wire harnesses, and accessories shown in Fig. 2.
2. Locate an accessible position for the controller (3016934). Fasten control loosely so harnesses can be easily connected. Allow ample air space around controller.

### **WARNING**

Do not install controller in the deployment path of an air bag. Refer to vehicle manufacturer's manual for air bag deployment area(s).

3. Install battery cable harness (3035935) through fire wall. It may be necessary to drill hole. Place cables near desired location by the battery. Do not connect leads to battery at this time. Run cables through drilled hole being careful not to damage insulation of cable.
4. Seal hole with a grommet and or silicone to protect wires and to prevent water from entering interior of vehicle.

### **IMPORTANT**

Make sure all wires are securely attached to vehicle or spreader. Use wire ties and/or wire clamps to attach wires. All excess wires must be rolled into bundles and attached to vehicle or spreader.

5. This spreader features a taillight for use in the event that it blocks your vehicle's taillight. Be sure to wire the taillight correctly. On most trucks, the light can be connected to the existing harness. If there is no harness, the wires will need to be spliced into your rear taillight.
6. Connect battery cables to the control unit. The battery cable has a red connector and can only be plugged in one way.
7. Route the motor wire harness (3016944) through vehicle to spreader. Use wire ties to fasten harnesses to frame and or under carriage. Ensure harnesses do not interfere with any moving parts and are not located near a heat source such as an exhaust. Be careful not to damage or kink the harnesses in any way. Attach the single end of the harness to the controller.
8. Connect the ignition cable (0203700) to the controller and connect the other end to a power source in the fuse box controlled by the ignition key.
9. Ensure no obstructions are present in the spreader and make sure the unit is off before connecting cables to battery.
10. Ensure battery terminals are clean and secure. Connect the battery cables to the battery terminals. **DO NOT CONNECT WIRE HARNESS TO DAMAGED OR CORRODED TERMINALS! IT MAY RESULT IN OVERHEATING, LOST POWER, AND POTENTIAL CONTROLLER DAMAGE!**
11. Check the spreader is receiving power and that all controls are working. Observe auger moving in proper direction. If direction is wrong, reverse wires between Motor and Wire Harness. Observe spinner is spinning in proper direction. If direction is wrong, reverse wires between Spinner and Wire Harness.

## Replacement Tailgate Spreader Operation

### **CAUTION**

- Read all instructions before operating.
- Always wear hand, eye, and skin protection when working with de-icing chemicals.
- Make sure everyone is standing clear of spreader before operating.
- Be alert for anything that may require shutting down the system.

1. Inspect spreader and spinner assembly to ensure all hardware is tight.
2. Ensure wire harness is not hanging down and that it is securely fastened.
3. Lubricate bearings.
4. Adjust feed door.
6. Never adjust any components of the spinner unless unit is turned off and disconnected from a power source.
7. Load dump bed with approved material. Do not exceed the vehicle's GVWR.
8. Raise the dump body to move salt to rear of the bed. Ensure that the spreader housing will clear the top of the material guide when the dump body is fully raised. Adjust the vertical position of the spinner if there is not enough clearance to fully raise the dump body.
9. Turn power on and adjust the auger and spinner speed settings for desired spread pattern size and density. Adjust the material guide position to vary the width and direction of the spread pattern. **Some practice may be required to achieve the desired settings.** Always turn off power before adjusting.
10. Raise dump bed periodically to shift material towards spreader. Do not drive with the dump body raised more than necessary. Always check for overhead obstructions whenever the dump body is raised. **NEVER DRIVE ON NON-LEVEL OR UNEVEN ROAD WITH DUMP BODY IN UP POSITION.**
11. Do not operate spreader unless the vehicle is running. Doing this will deplete the battery.

### **Adjustments**

Never adjust any part of the spreader while it is running.

#### **Door Adjustment**

1. Loosen the lock bolt to the left of the door. Adjust door to desired opening, re-tightening lock bolt.
2. Do not over tighten this bolt. It is only a friction lock.

#### **Spinner Adjustment**

1. Adjust the spinner position by inserting the motor assembly receiver hitch tube into the vehicle hitch receiver.
2. Select position and insert hitch pin through holes in tubes.
3. Adjust the vertical position of the spinner by adjusting selecting higher or lower holes in the vertical tube. Ensure that the spreader housing will clear the top of the material guide when the dump body is fully raised.

#### **Material Guide Adjustment**

1. Adjust the Material Guide position by loosening the bolts and nuts connecting the deflector shield to the motor assembly and the bolts and nuts connecting the Material Guide to the Spinner Shield.
2. Adjust position and re-tighten.

## Routine Maintenance

### ⚠ CAUTION

- TURN OFF ALL POWER BEFORE PERFORMING ANY SERVICE OPERATIONS.
- Follow Recommended Operating Procedure.
- Keep Equipment In Safe Operating Condition At All Times.
- Recognize & Avoid Hazards While Operating, Servicing and Maintaining Equipment.

### Bearings

1. Grease auger bearings at least once a week or as often as needed.

To access the bearing, the passenger side cover panel must be removed. The cover is secured by seven (7) self-tap screws. Check that the bearing is fastened securely to the spreader housing. When the unit is not in use

1. Disconnect the power cables.
2. Clean unit by removing all salt and debris. Never let salt sit in the unit. It may harden and become very difficult to remove.
3. Always use caution when moving and installing the spreader unit.

Fig. 1

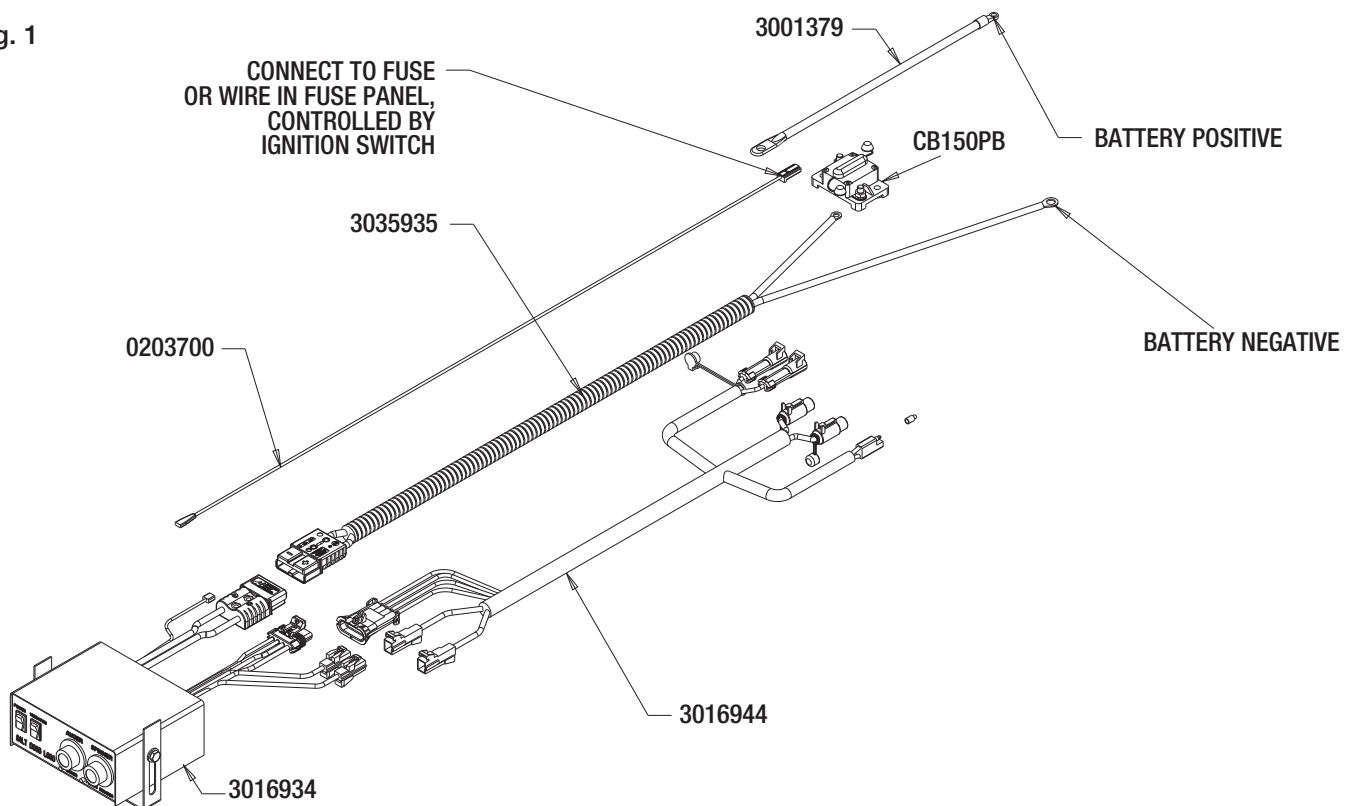
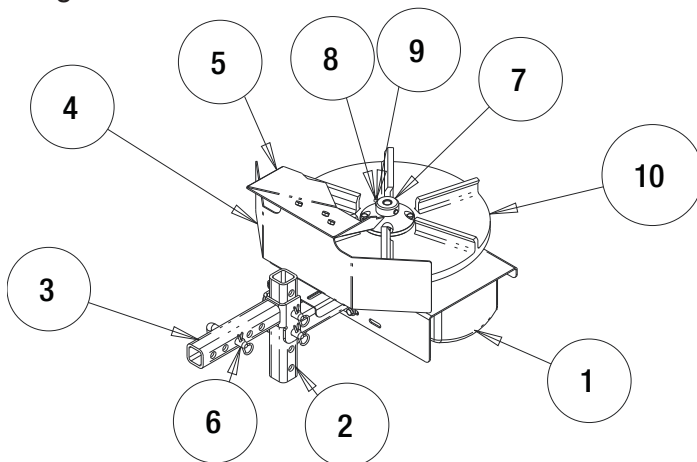


Fig. 2



ITEM	PART NO.	QTY.	DESCRIPTION
1	3051060	1	MOTOR ASSEMBLY, SPINNER REC. MOUNT
2	3051058	1	MOUNT, WELDMENT, SPINNER MOTOR
3	3051053	1	MOUNT, WELDMENT, 2IN RECEIVER
4	3051061	1	SHIELD, SPINNER
5	3051067	1	GUIDE, MATERIAL, REC. MOUNT SPINNER ASSY
6	HP6253WC	3	HITCH PIN WITH HP COTTER
7	3030182	1	HUB, SPINNER POLY
8	3007113	1	PIN, CLEVIS, 5/16 X 2-1/2, .141 HOLE ZN
9	3014994	1	PIN, COTTER, 1/8IN X 1IN SST
10	3030179	1	SPINNER 18" POLY CW

Fig. 3

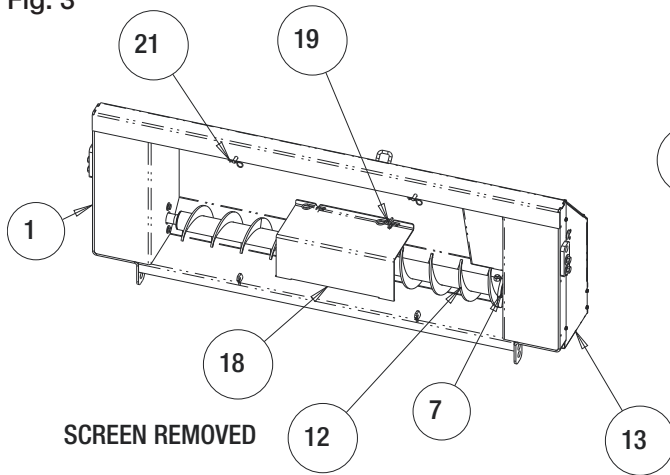
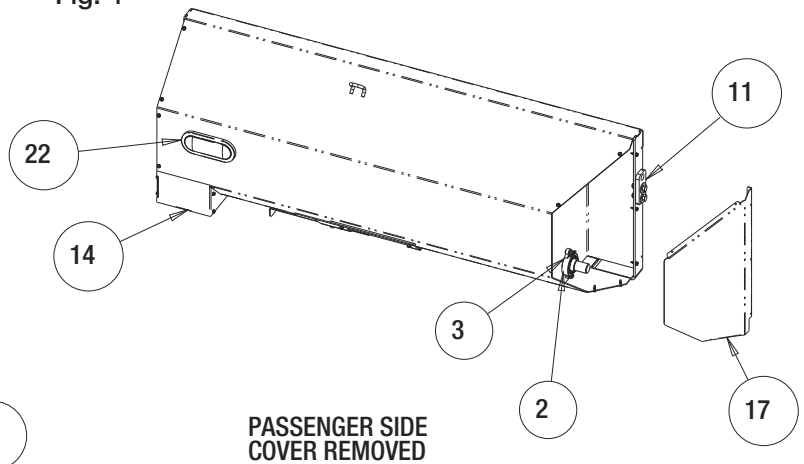


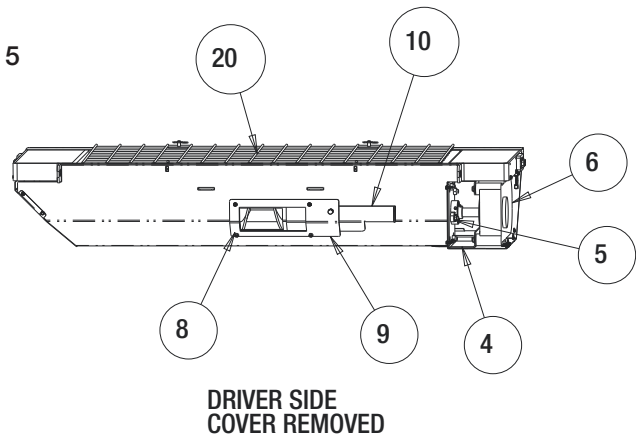
Fig. 4



## Bill of Materials

ITEM	PART NO.	QTY.	DESCRIPTION
1	3050152	1	HOUSING, WELDMENT, TG SPREADER
2	9240087	1	GASKET, FELT BEARING
3	9240086	1	BEARING, 1-1/4 FLANGE 2 HOLE
4	3050162	1	BRACKET WELDMENT, GEARBOX
5	1410200	1	BEARING, FLANGED 1-1/8"
6	3013821	1	GEAR MOTOR CONVEYOR 12 VDC
7	3014858	1	SLEEVE, AUGER ADAPTER
8	3015765	2	GUIDE, DOOR, TG SPREADER
9	3015776	1	DOOR GUIDE, WELDMENT
10	3015766	1	DOOR, TG SPREADER
11	3050582	2	PLATE, ADAPTER, SPREADER MOUNT SST
12	3050149	1	AUGER, WELDMENT, RTS CTR DISCHARGE
13	3050160	1	COVER PANEL, OUTER, DR SIDE
14	3050161	1	COVER, MOTOR, REAR, TG SPREADER
15	3017483	1	PLUG 1.00" DOME HEYCO 1702
16	3017982	2	WIRE BUSHING OPEN/CLOSED HEYCO 2867
17	3050163	1	COVER PANEL, OUTER, PS SIDE
18	3050428	1	PLATE, AUGER COVER, RTS
19	HP12	2	PIN, HAIR COTTER 5/32" ZN 3.25 OAL
20	3050443	1	SCREEN, WELDMENT, RTS
21	1420016	2	PIN, HAIR COTTER, CLEAR ZINC
22	5626510	1	LIGHT, 6.5in OVAL, STOP/TURN/TAIL, 10 LED RED, W/ GROMMET AND PLUG

Fig. 5



## 5535002 SPREADER WARRANTY INFORMATION

This warranty replaces all previous warranties and no employee of this company is authorized to extend additional warranties, or agreements, or implications not explicitly covered herein. Buyers Products Company warrants all parts of the product to be free from defects in material and workmanship for a period of one (1) year. Parts must be properly installed and used under normal conditions. Normal wear is excluded. Any part, which has been altered, including modifications, misuse, accident, or lack of maintenance will not be considered under this warranty. The sole responsibility of Buyers Products Company under this warranty is limited to repairing or replacing any part(s), which are returned, prepaid, 30 days after such defect is discovered, and returned part(s) are found to be defective by Buyers Products Company. Authorization from Buyers Products Company must be obtained before returning any part. The following information must accompany defective parts returned to Buyers Products Company: RMA #, spreader model, serial number, date installed, and distributor from whom purchased. Buyers Products Company shall not be liable for damage arising out of failure of any unit to operate properly, or failure, or delay in work, or for any consequential damages. No charges for transportation or labor performed on any part will be allowed under this warranty.