



Support Service Assistance

Phone Toll Free: 1-800-231-1525

Email:

saleszeeline@miltonindustries.com

Zeeline by Milton

4500 W Cortland Street
Chicago, IL 60639

WWW.ZEELINE.COM



www.zeeline.com



Air Operated Oil Dispenser

Model Numbers: ZE6OD and ZE21OD

Use and Operations Manual

REV 1/25/2022

Index

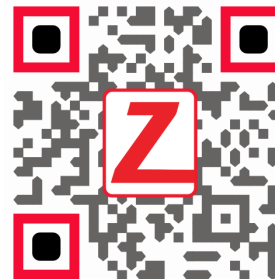
- 1 - Product Introduction
- 2 - Safety & Warnings
- 3 - Assembly & Usage Instructions
- 4 - Maintenance & Care
- 5 - Troubleshooting
- 6 - After Sale Service
- 7 - Parts List/Mechanical Drawing
- 8 - Contact Info

ZE6OD and ZE21OD

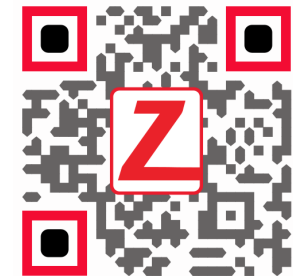


Our air oil dispensers are available in 21 - 6 Gallon capacities (24 - 80 liters) and are designed to transfer oil with or without a continuous air connection. The Safety valve on the tank is designed to provide protection against extreme air pressures with your safety in mind. Our 21 gallon model has 2 fixed swivel casters for improved mobility when needed. The filter funnel is mounted on top of the tank to allow easy refilling, the level can be monitored on a convenient sight tube on the side of the tank as well. It is recommended to fill the tanks 4/5 capacity with fluid to allow space for pressurize air to enter the tank.





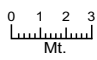
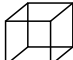
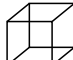
¿Necesita instrucciones en español? Escanea aquí.



Besoin d'instructions en français? Scannez ici.



Features

MODEL							
ZE21OD	Air Operated	7.3 PSI	7.3 PSI Discharge	21 Gal (80 lt)	6 ft 1/2x3/4 in	19x20x40.5 in 48x48x103 cm	52 lbs. 23.5 kg
ZE6OD		0,5 Bar	0.5 Bar Discharge	6 Gal (24 lt)	2 m 12x18 mm	15.5x16.5x36.5 in 39x42x92 cm	33 lbs. 15 kg

Safety & Warnings

Always wear proper safety attire while operating this product.



Use caution on floors around this product. A loose connection or residual oil may exist which can cause the surface to become slippery, leading to a potential slip hazard.

Always follow local and federal guidelines for hazardous materials while operating this unit.



Do not weld on or near tank.

Do not alter the machine for modified usage. Failure to do so will void the product warranty and can cause operation that can result in serious injury or death.



ORIGINAL PART

Only use original spare parts that are authorized by Zeeline. The use of spare parts not designed in accordance with this product can cause undesired operation or put the operator at risk of serious injury or death.



Failure to comply with these guidelines can result in undesired operation of product, loss of warranty, and put the operator at risk of serious injury or death. Zeeline by Milton assumes no responsibility for failure to comply with written safety instructions.

Assembly & Usage Instructions

There is no assembly action for this device. Please read this information carefully before operating.

- Turn off all of the valves that are located on the tank. Check the manometer which is locked on the tank and discharge the air from the tank.



Before opening the fill valve check the air pressure in the tank on the manometer

If there is compressed air in the tank open the valve and evacuate the air. Do not open the filling valve until this process has been completed.



Open the filling valve and fill the tank. Reservoir fluid level may be observed via the sight tube gauge.

Close the filling valve after filling. Make sure all of the valves are closed.



- After completing that action. Your dispenser will be ready for operation.

Assembly & Usage Instructions

Oil Dispensers

Check that all of the connections are tightened first.



Connect the compressed connection and begin supplying air (Max 7.3 PSI) with the valve Open. Close the valve when the manometer reaches 7.3 PSI.

The oil dispenser is now ready for use. Open the oil drain valve on the tank.



When you press the trigger of the oil gun, the oil flow will start and the flow will stop when you release the trigger.

After you have finished with the oil dispensing unit, close all of the valves and vent the compressed air inside.



Maintenance

- Clean the dispenser daily
- Do not use gasoline or solvent with this dispenser.
- Check the hose connections daily
- If there are loose connections, tighten them.
- Use caution when moving across uneven surfaces
- Maximum air pressure is 7.3 PSI (0.5 BAR)
- When you are not using the machine, make sure to disconnect the air hose.
- Only use original spare parts
- The operator must read this manual and be properly trained before operating the pump.
- If the operator is unsure of how to operate this equipment then contact our support team for assistance.
- The warranty period is two years from the date of purchase (proof of purchase is required for all claims). Failure to follow the instructions, use of non authorized parts, or neglect will void the warranty.
- The maximum intended life is 5 years.
When the useful life has been exceeded please dispose of the dispenser properly.





Troubleshooting

Do not change the settings of the safety valve as provided by the factory.	Safety risks may occur if the safety valve is modified due to uncontrollable pressurization.	For pressure irregularities or malfunctions contact Zeeline or an authorized Zeeline distributor for service.
Perforations and leaks in hoses can occur if this product is used with flammable or acid derived abrasives.	Do not use flammable or combustible substances.	If flammable or combustible material has been used, evacuate with safety precautions.
When air enters manometer, the hand does not move	Replace the manometer gauge with a new one.	Obtain original parts from an authorized Zeeline distributor.
Oil gun continues to deliver oil when trigger is released.	There's dirt in the ball bearing.	Clean ball bearing.

- If the above information is not enough, in case of failure ;
- Do not attempt any further action.
- Please contact with GÜLERSAN authorized service.
- If the parts was changed without the knowledge of the authorized service, the pump will be out of warranty.



Please ! Read this information carefully.

After Sales Services



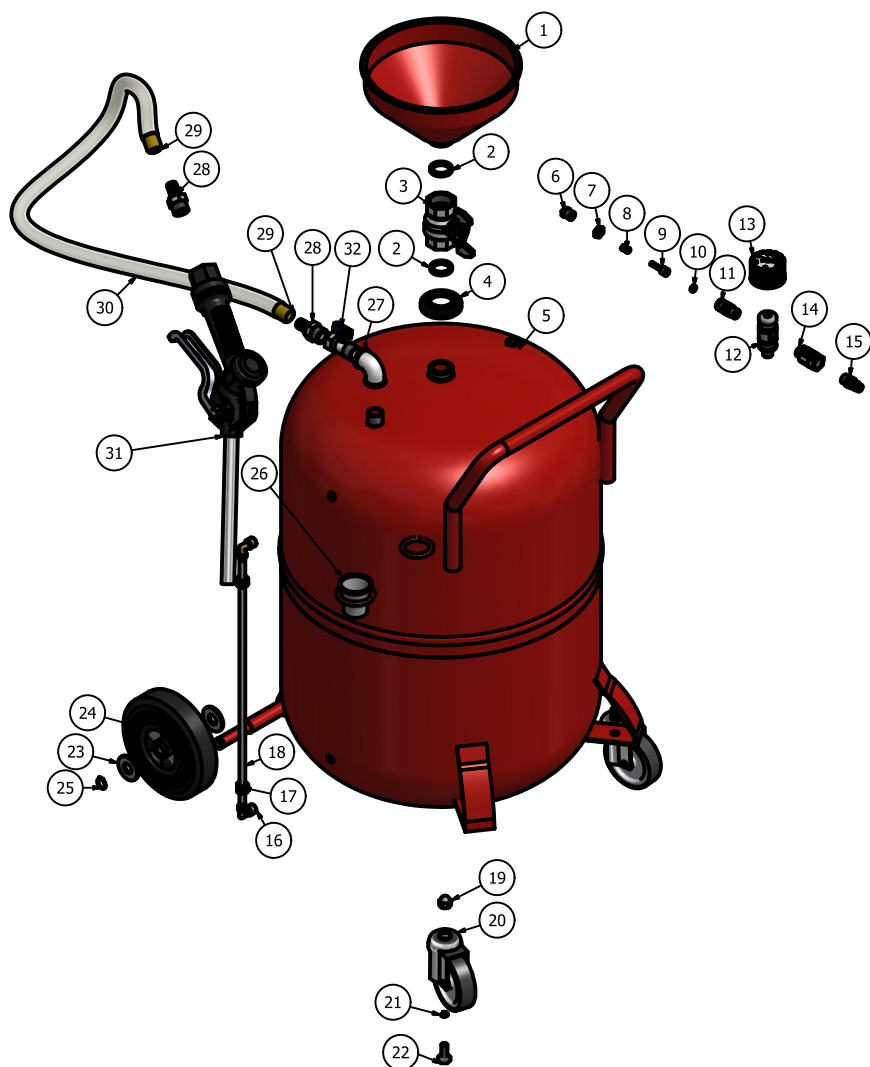
Above is the manufacturer's product identification information

According to this information:

- A: Indicates evacuation working type. Showing working type.
- B: Indicates tank capacity of tank and funnel. Showing capacity of tank and funnel.
- C: Indicates hose length. Showing hose length.
- D: Indicates machine weight without oil. Showing machine weight without oil.
- E: Indicates serial number. Showing serial number.

- A proof of purchase is required for all warranty claims.
- If you are in need of technical support and do not have your invoice please refer to the serial number on the unit.
- The maximum intended lifespan of this product is 8 years. Moisture, chemicals, and atmospheric conditions will alter the integrity of the tank over time.

Technical Drawing



Part List

ZE210D				
ASMB. NO	PART NUMBER	QTY.	DESCRIPTION	
1	ZE210D-FUN	1	FUNNEL	
2	ZE210D-GK1	2	SEAL	
3	ZE21DC-BV1	1	VALVE	
4	ZE210D-GK2	1	NYLON SEAL	
5	ZE21DC-TANK80	1	TANK	
6	ZE210D-VK	1	SAFETY VALVE NIPPLE	
7		1	SAFETY VALVE NUT	
8		1	SAFETY VALVE SPRING	
9		1	SAFETY VALVE SHAFT	
10		1	SAFETY VALVE SEAL	
11		1	SAFETY VALVE BODY	
12		1	AIR SYSTEM BODY	
13		1	PRESSURE GAUGE	
14		ZE21DC-BV14	1	1-4 BALL VALVE
15		ZE21DC-AV1	1	MALE PLUG
16	ZE21DC-LK	2	ELBOW	
17		2	ELBOW NUT	
18		1	LEVEL HOSE	
19	ZE21DC-CK	2	3-8 NUT	
20		2	WHEEL 75X25	
21		2	3-8 RONDELLA	
22		2	3-8X20 BOLT	
23	ZE21DC-WK	4	WASHER	
24		2	WHEEL 150X40	
25		2	RING	
26	ZE210D-DP	1	OIL CUP	
27	ZE210D-DHK	1	ELBOW	
28		2	HOSE FITTINGS	
29		2	RECORD SHELL	
30		1	WIRE HOSE	
31	ZE210D-DP	1	OIL GUN 4101	
32	ZE210D-DHK	1	1/2 BALL VALVE	

● Model ZE210D

Technical Drawing



Part List

ZE6OD				
ASMB. NO	PART NUMBER	QTY.	DESCRIPTION	
1	ZE21OD-FUN	1	FUNNEL	
2	ZE21OD-GK1	2	SEAL	
3	ZE21DC-BV1	1	VALVE	
4	ZE21OD-GK2	1	NYLON SEAL	
5	ZE6EV-TANK24	1	TANK	
6	ZE21OD-VK	1	SAFETY VALVE NIPPLE	
7		1	SAFETY VALVE NUT	
8		1	SAFETY VALVE SPRING	
9		1	SAFETY VALVE SHAFT	
10		1	SAFETY VALVE SEAL	
11		1	SAFETY VALVE BODY	
12		1	AIR SYSTEM BODY	
13		1	PRESSURE GAUGE	
14		ZE21DC-BV14	1	1-4 BALL VALVE
15		ZE21DC-AV1	1	MALE PLUG
16		ZE21DC-LK	2	ELBOW
17	2		ELBOW NUT	
18		1	LEVEL HOSE	
19	ZE6EV-WK	4	WASHER	
20		2	WHEEL 125X37.5	
21		2	RING	
22	ZE21OD-DP	1	OIL CUP	
23	ZE21OD-DHK	1	ELBOW	
24		1	HOSE FITTINGS	
25		2	RECORD SHELL	
26		1	WIRE HOSE	
27		1	HOSE FITTINGS	
28	ZE21OD-DG	1	OIL GUN 4101	
29	ZE21OD-DHK	1	1/2 BALL VALVE	

● Model ZE6OD