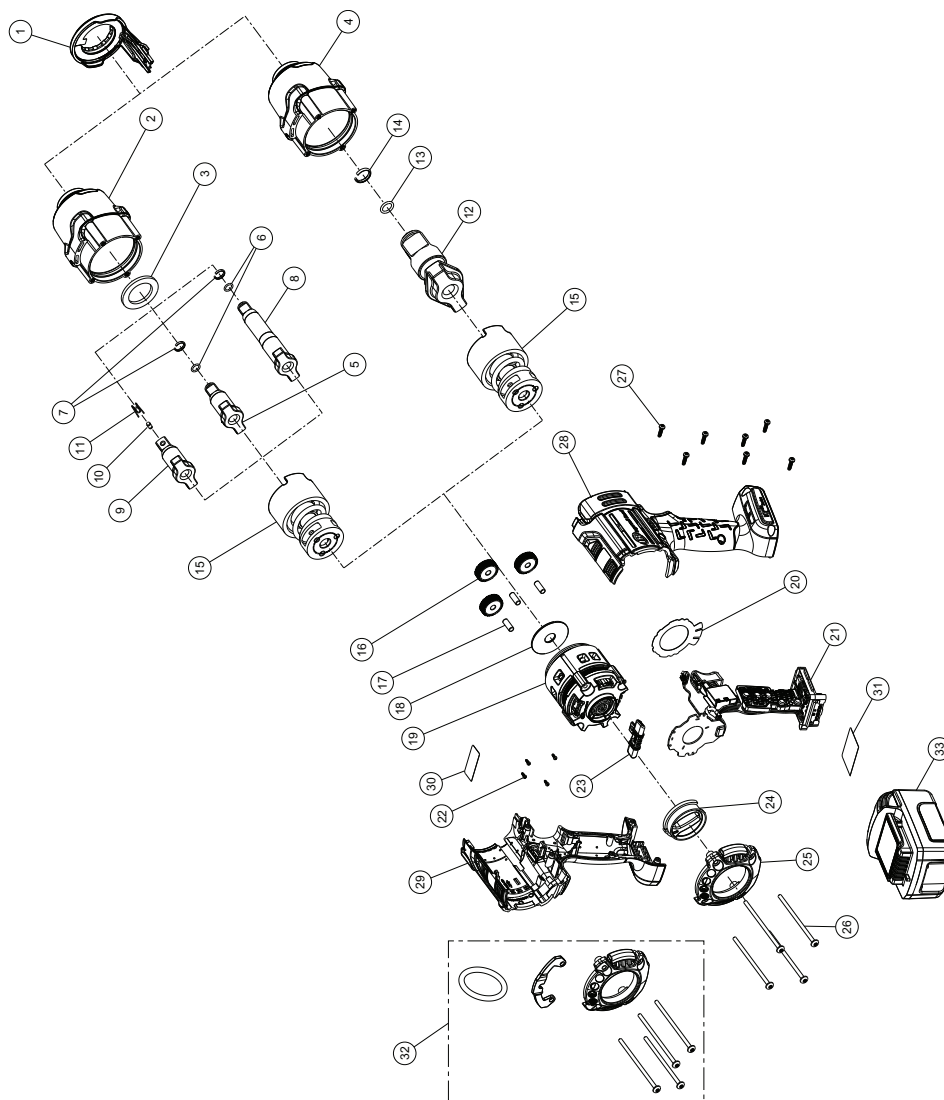


# W7002 Series: W7152, W7152P, W7172, and W7252 Cordless Impact Wrench

Figure 1. Exploded View (Dwg. 47621726)



**Table 1. W7152, W7152P, W7172, and W7252 Cordless Impact Wrench - Parts List**

| Item | Part Description                            | Part Number (CCN)            | Item | Part Description           | Part Number (CCN)            |
|------|---|------------------------------|------|----------------------------|------------------------------|
| 1    | Led Kit                                     | W7152-KLED<br>(47631609001)  |      | Anvil Kit for W7152        | W7152-K626<br>(47631603001)  |
|      | Hammer Case Kit for W7152, W7152P and W7252 | W7152-K727<br>(47631602001)  | 5    | 1/2" Anvil, Retaining Ring | —                            |
| 1    | LED Assembly                                | —                            | 6    | O-Ring                     | —                            |
| 2    | Hammer Case Assembly                        | —                            | 7    | Retaining Ring             | —                            |
| 3    | Washer                                      | —                            |      | Anvil Kit, for W7252       | W7252-K626<br>(47633585001)  |
|      | Hammer Case Kit for W7172                   | W7172-K727<br>(47663576001)  | 8    | 1/2" Anvil, 2" Extended    | —                            |
| 1    | LED Assembly                                | —                            | 6    | O-Ring                     | —                            |
| 4    | Hammer Case Assembly                        | —                            | 7    | Retaining Ring             | —                            |
|      | Anvil Kit for W7152P                        | W7152P-K626<br>(47631604001) | 25   | Backcap Kit                | W7152-K40B<br>(476316130001) |
| 9    | 1/2" Anvil, Pin                             | —                            |      | Fastener Kit               | W7152-K105<br>(47631614001)  |

**Table 1. W7152, W7152P, W7172, and W7252 Cordless Impact Wrench - Parts List (continued)**

| Item | Part Description                        | Part Number (CCN)            | Item | Part Description                | Part Number (CCN)             |
|------|---|------------------------------|------|---------------------------------|-------------------------------|
| 10   | Retaining Pin                           | —                            | 22   | Screw, Hall PCBA (QTY. 4)       | —                             |
| 11   | Spring                                  | —                            | 26   | Screw, Hammercase (QTY. 4)      | —                             |
|      | Anvil Kit for W7172                     | W7172-K626<br>(47663577001)  | 27   | Screw, Housing (QTY. 7)         | —                             |
| 12   | 3/4" Anvil                              | —                            |      | Housing Kit                     | W7152-K40<br>(47631612001)    |
| 13   | O-Ring                                  | —                            | 28   | Left Housing                    | —                             |
| 14   | Retaining Ring                          | —                            | 29   | Right Housing                   | —                             |
|      | Socket Retainer Kit for W7152 and W7252 | 2125QTi-K425<br>(80107733)   | 30   | Warning Label                   | —                             |
| 6    | O-Ring                                  | —                            | 27   | Screw, Housing (QTY. 7)         | —                             |
| 7    | Retaining Ring                          | —                            |      | Label Kit                       | W7152-K99<br>(47631615001)    |
|      | Socket Retainer Kit for W7152P          | 2125PTi-K425<br>(80107725)   | 30   | Warning Label                   | —                             |
| 10   | Retaining Pin                           | —                            | 31   | Information Label               | —                             |
| 11   | Spring                                  | —                            | 32   | Hanger Kit                      | W7152-K365B<br>(47632290001)  |
|      | Socket Retainer Kit for W7172           | 2145-K425<br>(47118112)      |      | Backcap                         | —                             |
| 13   | O-Ring                                  | —                            |      | Screw, Hammercase (QTY. 2)      | —                             |
| 14   | Retaining Ring                          | —                            |      | Screw, Long Hammercase (QTY. 2) | —                             |
| 15   | Impact Mechanism Kit                    |                              |      | Ring                            | —                             |
|      | for W7152, W7152P, W7252                | W7152-K724<br>(47631605001)  |      | Bracket                         | —                             |
|      | for W7172                               | W7172-K724<br>(47696157001)  | 33   | Battery, BL2022                 | BL2022<br>(47515902001)       |
|      | Gear Kit                                | W7152-K37<br>(47631606001)   | (a)  | Battery Charger                 | BC1121<br>(47507879001)       |
| 16   | Planet Gear (QTY. 3)                    | —                            | (a)  | Protective Tool Boot            | W7152-BOOT<br>(47621732001)   |
| 17   | Gear Pin (QTY. 3)                       | —                            | (a)  | Protective Tool Boot            | W71 52-BOOTX<br>(47621734001) |
| 18   | Cam Thrust Washer                       | —                            | (a)  | Protective Battery Boot         | BL2010-BOOT<br>(47510964001)  |
| 19   | Brushless Motor Kit                     | W7152-K54<br>(47631607001)   | (a)  | Tool Bag                        | TB4<br>(47543666001)          |
| 20   | Insulator Sheet Kit                     | W7152-K624<br>(47633589001)  | (a)  | Grease                          |                               |
|      | Drive Kit                               | W7152-K93<br>(47631611001)   |      | IR #105 (1 LB Can)              | 105 1 LB<br>(04279147)        |
| 21   | Drive Assembly                          | —                            |      | IR #105 (8 LB Can)              | 105 8 LB<br>(04264875)        |
| 31   | Information Label                       | —                            |      | IR #67 (1 LB Can)               | 67 1 LB<br>(03773009)         |
| 23   | Directional Switch Kit                  | W7152-K75<br>(47631610001)   |      | IR #67 (8 LB Can)               | 67 8 LB<br>(03820008)         |
| 24   | Regulator Kit                           | W71 52-K249<br>(47631608001) | (a)  | Grease Gun                      | R000A2-228<br>(03095015)      |

(a) Indicates not illustrated.

## Parts and Maintenance

When tool life has expired, it is recommended that the tool be disassembled, degreased and parts separated by material for proper recycling. Tool repair and maintenance should only be carried out by an authorized Service Center. Refer all communications to the nearest **Ingersoll Rand** office or distributor.

## Related Documentation

Manuals can be downloaded from [ingersollrand.com](http://ingersollrand.com)

For additional information, refer to:  
 Product Safety Information Manual 04581146.  
 Product Information Manual 47621725001.  
 Declaration of Conformity 47589598001.  
 Hanger Install / Removal Instruction Card 47641906001 and 47642459001.