

**CUDDY™ 40QT**

Owner's Manual

**AMPHIBIOUS  
FLOATING  
COOLER**  
& DRY STORAGE VESSEL





# FLOATING PARTY!



The Cuddy is the result of hundreds of hours of R&D to develop the most versatile cooler and dry storage vessel in the world.

Engineered to perform in and out of the water, the Cuddy brings a whole new level of convenience to recreational waters sports.

The Cuddy combines all of the features and conveniences of a modern cooler with the additional ability to be taken out on the water.

The Cuddy's unsinkable design and hydrodynamic profile allow it to be towed, tethered or anchored in any body of water.

Since we can't always be out on the water, the Cuddy serves as a traditional cooler on land, making it truly the last cooler you will ever need to own!

Thank you for your support!

**CUDDY™ 40QT**

# CUDDY™ 40 QT

## Marine Grade Features



**HANDY HATCHES™ DUAL LIDS**  
Easy access on both sides and center balance to resist tipping when opening lids on the water



**4X T-LATCHES**  
Creates airtight seal for maximum insulation or dry locker use



**DUAL WALLED WITH SNOW BEAD™ INSULATION**  
12-48 hour ice retention based on use and conditions



**4X CUP HOLDERS**  
Designed to fit standard size cozies and can insulators



**6' TOW STRAP w/ 2 CARABINERS**  
Tow behind a kayak, tube, SUP, etc. or anchor to a fixed point.



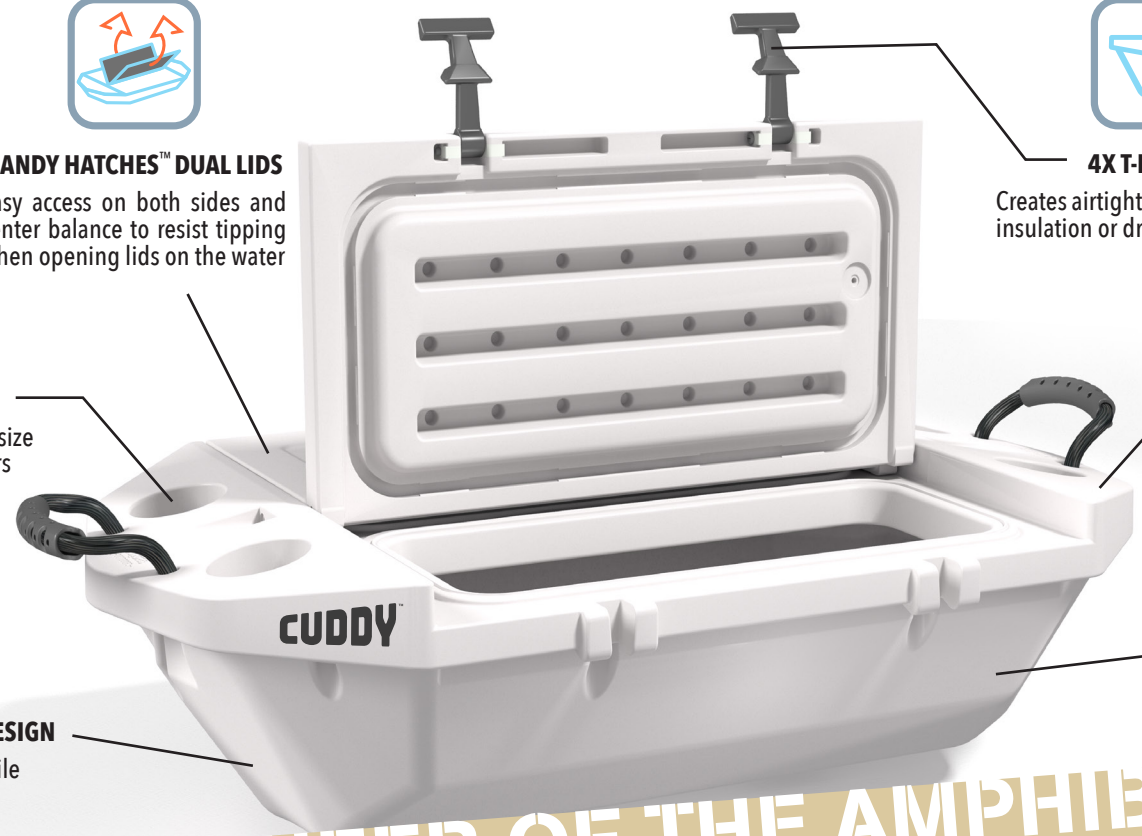
**FLOW TOW™ HULL DESIGN**  
Hydrodynamic profile for efficient towing



**40 QT. CAPACITY**  
(30 cans + 20lb ice)



**SURE FLOAT™ FLOATATION**  
Unsinkable Design + Capsize Resistant



# PIONEER OF THE AMPHIBIOUS VESSEL!





**CUDDY™ 40QT**

# ON LAND & WATER



**CAMPING • FISHING • BEACH**



**DRY STORAGE FRIENDLY**



**KAYAK • SUP • BOATING**





**Wide Dual Lids**  
provide easy access for  
all your food and drinks!

**CUDDY™ 40<sub>OT</sub>**

**POOL PARTY READY**

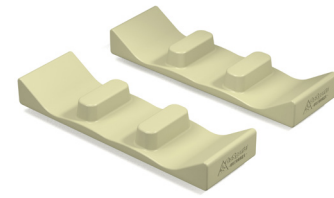




**CUDDY™ 40 QT**

**BE THE LIFE  
OF  
THE PARTY!**

**ACCESSORIES**  
SOLD SEPERATELY



**Rubber Foot Grip Kit**  
Added grip and stability for  
boats, truck beds and other  
slick surfaces

**Wheel Kit**  
Great for getting the  
cuddy from the car  
to the shore



**Anchor Kit**  
Great for social floating  
on the sandbar



## ICE RETENTION



The Cuddy is designed to retain ice for an average of 24 hours, but can vary based on use and conditions. The below steps will help maximize ice retention, but we recommend balancing the mix of ice vs drinks based on your needs.

**KEEP THE LIDS CLOSED AND LATCHED:** Keep both lids closed and latched when not retrieving food or drink from the cooler. Avoid letting water spill into the cooler as it will melt the ice.

**LOAD APPROPRIATELY:** Pack the right amount of ice for your mission. Same day trips/parties need less ice than overnight adventures.

**KEEP THE MELTED ICE WATER IN THE COOLER:** By not draining the ice water, you are keeping the cooler colder and keeping potential empty spaces filled.

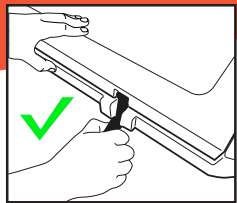
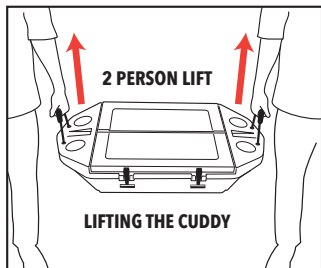
**START WITH A COLD COOLER:** Pre-cool your cooler with a sacrificial bag of ice before packing your food and drink.

**AVOID EMPTY SPACES INSIDE COOLER:** Pack a layer of ice around all items in the cooler for best results. Fill empty spots with more ice or towels.

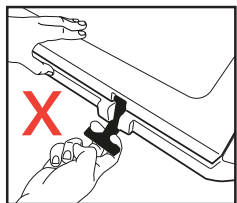
**LEAVE IN SHADE WHEN POSSIBLE:** Store cooler in a cool shaded area whenever possible.



## User Tips

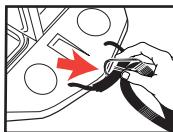


**EASILY OPEN WITH CLOSED FIST GRIP**

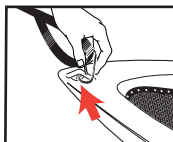


**AVOID DIFFICULT TWO FINGER GRIP**

### USING THE TOW STRAP

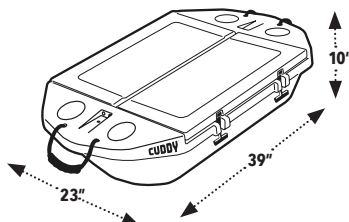


**CLIP ONE CARABINER TO THE CUDDY HANDLE**



**ATTACH THE OTHER CARABINER TO A SECURE POINT ON YOUR KAYAK OR SUP**

## USER INFO



SIZE	39" x 23" x 10"
DRY WEIGHT	24.7 lbs.
CAPACITY	40 Quart



## WARNINGS

- Not a flotation or life-saving device
- Adult supervision required
- For intended use only
- Do not stand or sit on the board
- Dry and store when not in use



### RISK OF CHILD ENTRAPMENT

It is possible for children to be trapped inside this cooler and suffocate. Keep cooler out of children's reach when not in use.

## WARRANTY INFO

P&P IMPORTS, LLC warrants its Products to be free from defects in material and workmanship for a period of six (6) months from date of delivery to the consumer. Please keep your original delivery receipt, as it will be required for any warranty claim. This warranty is not transferable and does not apply to merchandise purchased "as is" (i.e. floor samples or clearance center items). This warranty does not apply to P&P IMPORTS, LLC goods purchased from a non-authorized P&P IMPORTS, LLC dealer or reseller. Please follow all instructions regarding your Product, as failure to do so will void this warranty.

All claims must be directed to the P&P IMPORTS, LLC retail dealer from whom the merchandise was originally purchased, along with original delivery receipt.

The following conditions apply to this Warranty except where prohibited by law:

1. The warranty is only valid to the original user/consumer.

2. This warranty only applies under conditions of normal usage and does not apply to defects or damage resulting from negligence, abuse or misuse, including but not limited to inadequate or improper maintenance, improper assembly, improper installation, improper cleaning, or exposure to chemicals and/or liquids, or fading caused by exposure to sunlight.

3. This warranty does not apply to any use for which the product was not designed.

4. Because of the craftsmanship and materials involved in the manufacturing process, minor differences and finish variations will occur from piece to piece. Therefore, this warranty does not cover those minor differences or finish variations, or any differences between floor samples, printed illustrations, Internet photos or other visual displays.

5. Any modification or alteration of P&P IMPORTS, LLC products will void the warranty.

6. Under the terms of this limited warranty, P&P IMPORTS, LLC will either repair or replace the defective item. Repair or replacement is strictly at P&P IMPORTS, LLC's discretion.

7. All warranty claims must initially be presented to the authorized P&P IMPORTS, LLC retail dealer where the game was purchased. The dated proof of delivery and item serial number are required for warranty validation. If retailer is no longer in business, please contact us for assistance.

8. P&P IMPORTS, LLC assumes no responsibility for incidental or consequential damages. Some states do not allow the exclusion or limitation of incidental or consequential damage, so these limitations may not apply to you.

9. P&P IMPORTS, LLC is not responsible for transportation costs between the consumer and the P&P IMPORTS, LLC retail dealer for warranty and repair issues.

10. If you have any questions concerning this warranty, please contact P&P IMPORTS, LLC at [info@pandpimports.com](mailto:info@pandpimports.com)

## Care Instructions

✓ Never drag or tow the Cuddy on hard surfaces (concrete, asphalt, brick etc) as it can permanently damage the bottom hull.

✓ Inspect for damage before use. Water entering any of the plastic cavities can cause the Cuddy to sink.

✓ Clean and thoroughly dry the Cuddy with the lids open before storing.

Contact GoSports Outdoors for replacement parts as needed: [info@pandpimports.com](mailto:info@pandpimports.com)



Scan Now To  
Activate Warranty



Designed and Imported by  
P&P Imports LLC  
Irvine, CA

[www.GoSportsOutdoors.com](http://www.GoSportsOutdoors.com)  
© 2022 P&P Imports LLC  
All Rights Reserved

Patent Pending

TAG AND FOLLOW



@CuddyCoolers @CuddyCoolers

**CUDDY™ 40<sub>QT</sub>**