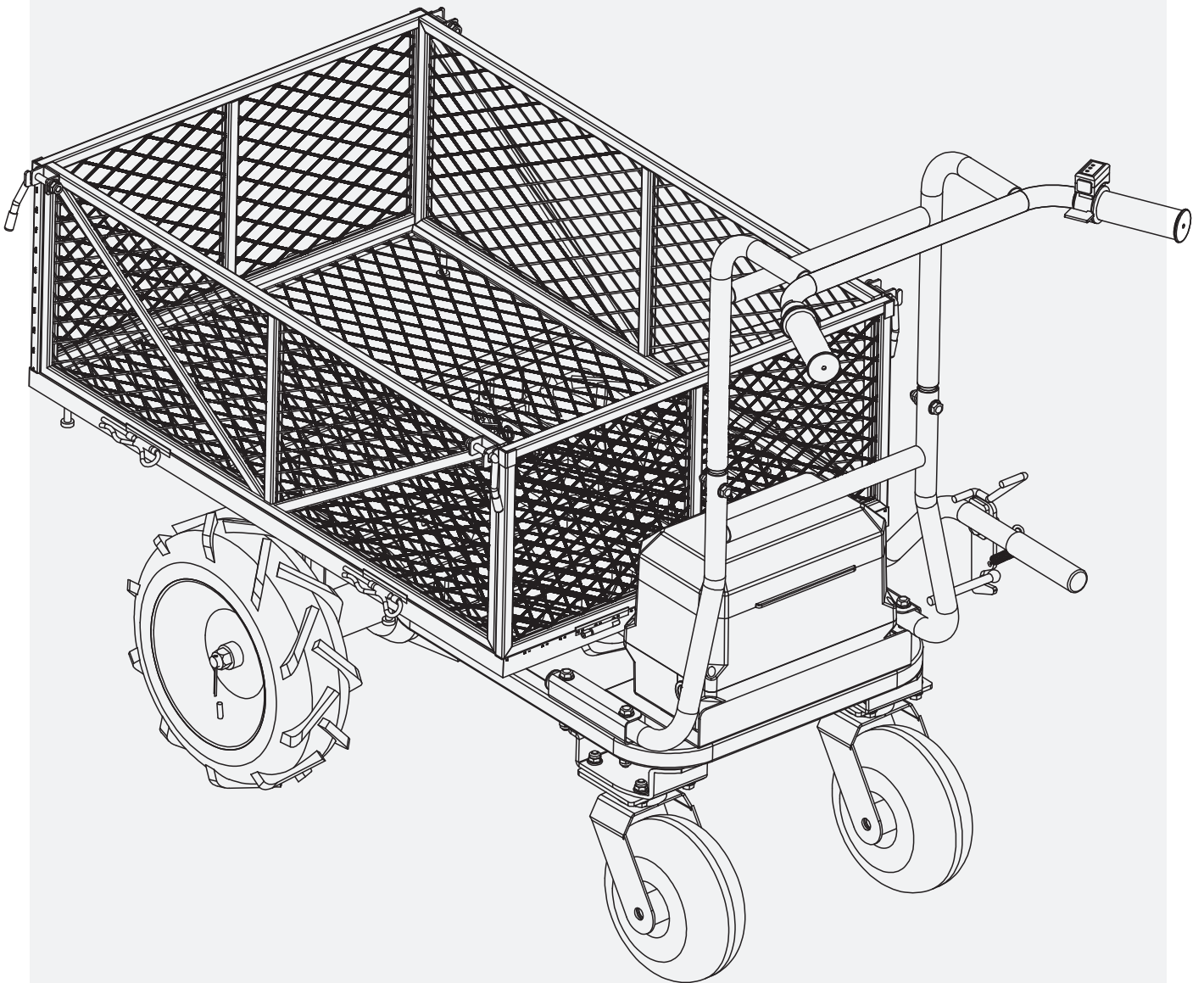




Electric Power Cart | GUO095

Operator's Manual



Warning: Please read and thoroughly understand all instructions before operating. Failure to follow safety rules and other basic safety precautions may result in serious personal injury. Keep these instructions in a safe and easily accessible place so that they can be referred to when needed. Retain these instructions to assist in future servicing.

INDEX

Technical Specifications	2
Warning	3-4
Package Contents	5
Assembly	6-9
Operation	10-11
Warranty	12
Troubleshooting	12
Parts Breakdown	13-14

Technical Specifications

SKU#	GU0095
Motor Specs	500W
Load Capacity	660 lb (300 kg)
Battery Specs	48V,4Ah,177.6Wh Li-Ion Battery
Speed Range	Forward: 0-4.4MPH(0-7km/h) Variable Reverse: 0-2.2MPH(0-3.5km/h) Variable

Warning

Safety Guidelines

1. Keep your work area clean and well-lit. A cluttered or dark space can lead to accidents.
2. Wear shoes with non-slip soles. If you have safety shoes, even better. Never use the cart barefoot or in open-toed sandals.
3. Do not use the cart near flammable gases, liquids, or dust. Sparks from the motor could ignite fumes.
4. Don't operate the cart in rain or tall, wet grass. This is an electric cart and must stay dry.
5. Keep children and bystanders at a safe distance while operating. Distractions can lead to loss of control.
6. Always stand behind the cart and hold the handles firmly while operating.
7. Never ride on the cart.
8. Do not allow passengers on the cart at any time.
9. If you're reversing or walking backward with the cart, check behind you and move carefully to avoid tripping.
10. Avoid using the cart when visibility is low—you may not see obstacles in your path.
11. Slow down and stay cautious on rough ground.
12. Stick to solid, even ground when possible to avoid tipping, especially near edges or soft shoulders.
13. Don't operate the cart on slopes steeper than 12°.
14. If anything seems off, stop the cart on level ground. Step the brake lever, lock it in place, then power off the machine before checking it.
15. Before using the cart, make sure the lock lever is fully down and locked. If it's not secure, the bucket or platform may shift—especially on hills.
16. Keep cords and wires clear of the cart's wheels and path.
17. Only use replacement parts and accessories recommended by the manufacturer.

Personal Safety Warnings

1. This is not a toy. Children under 14 years of age are not allowed to operate it.
2. Stay alert, watch what you are doing and use common sense when operating a power tool. Do not use a power tool while you are tired or under the influence of drugs, alcohol or medication.
3. Use personal protective equipment. Always wear eye protection. Protective equipment such as dust mask, non-skid safety shoes, hard hat, or hearing protection used for appropriate conditions will reduce personal injuries.
4. Prevent unintentional starting. Ensure the switch is in the off-position before connecting to power source and/or BATTERY pack, picking up or carrying the tool.
5. Remove any adjusting key or wrench before turning the power tool on. A wrench or a key left attached to a rotating part of the power tool may result in personal injury.
6. Do not overreach. Keep proper footing and balance at all times. This enables better control of the power tool in unexpected situations.
7. Dress properly. Do not wear loose clothing or jewelry. Keep your hair, clothing and gloves away from moving parts.
8. If devices are provided for the connection of dust extraction and collection facilities, ensure these are connected and properly used. Use of dust collection can reduce dust-related hazards.
9. Does not let familiarity gained from frequent use of tools allow you to become complacent and ignore tool safety principles. A careless action can cause severe injury within a fraction of a second.
10. Always wear protective goggles to protect your eyes from injury when using power tools.
11. It is an employer's responsibility to enforce the use of appropriate safety protective equipment's by the tool operators and by other persons in the immediate working area.

Slope Operation Safety

1. Avoid crossing slopes. Slow down and stay cautious to keep control.
2. Be extra careful when starting or stopping the machine on a slope.
3. If your load starts to feel unstable, secure it with ropes.
4. On uneven or loose surfaces, reduce how much you're carrying.
5. Keep loads low to the ground on slopes to avoid tipping and keep visibility clear.
6. Never park on a slope. Instead, stop on flat ground, set the brake, and power off the machine.
7. Don't change direction or switch drive modes while on a slope.
8. Don't release the switch trigger on uphill slopes—the cart may roll backward.
9. Make sure the battery has enough charge to handle a slope. If it's running low, swap or recharge before using.

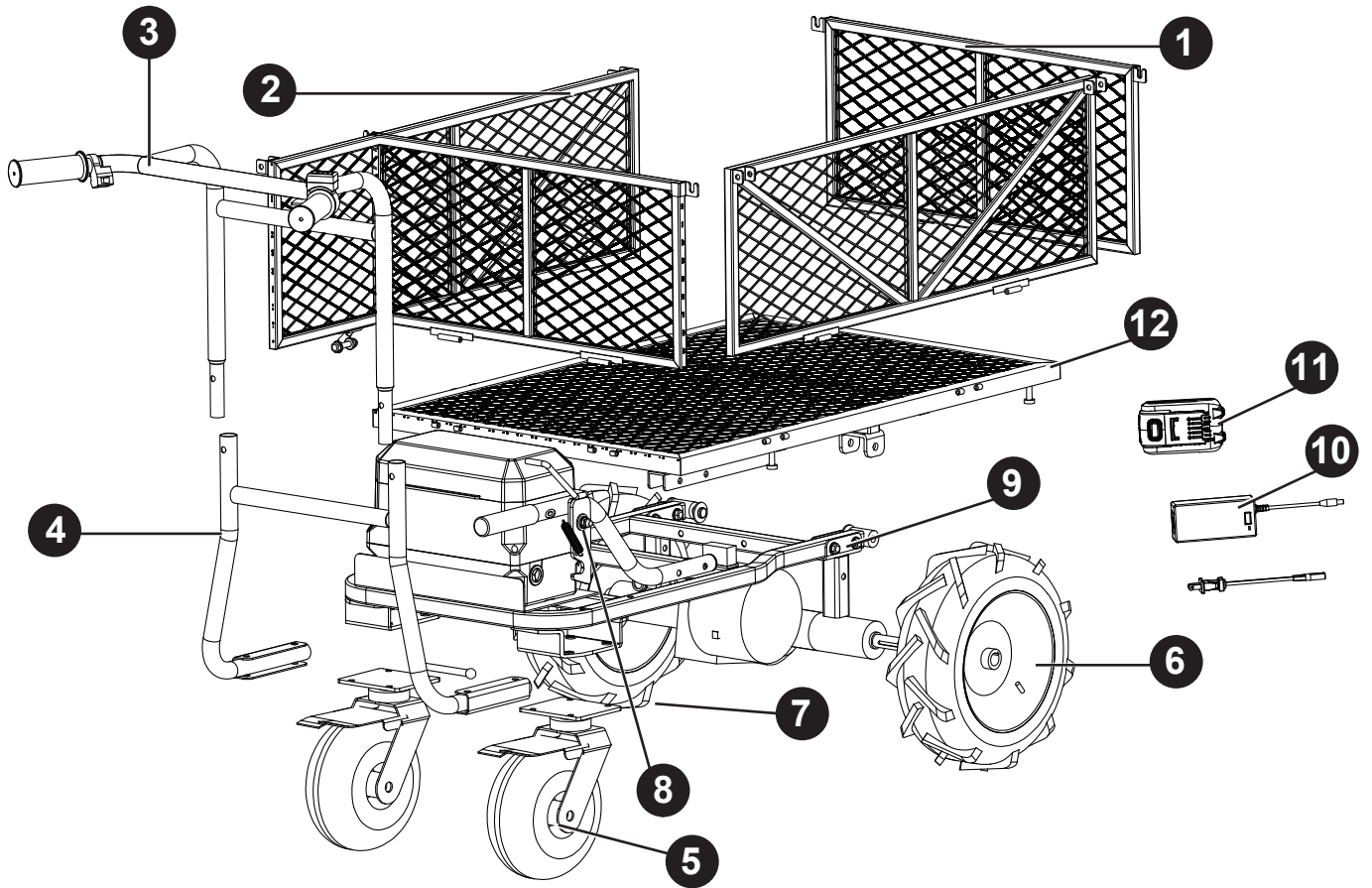
Loading Guidelines

1. Don't overload the cart—always follow the weight limits in the manual.
2. Secure loads with ropes if needed.
3. Keep objects fully inside the carrier or bucket. Overhanging items can hit obstacles or cause accidents.
4. Keep loads below eye level. If they're stacked too high, it can block your view or make the cart unstable.
5. Balance the load. Uneven weight can cause tipping.
6. Before loading, double-check that the lock lever is fully down and locked.
7. Only load and unload on flat ground.
8. When lifting or tilting the bucket, hold the frame firmly and use a steady posture.



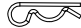
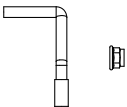


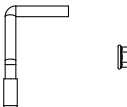



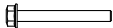
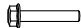

Battery Safety and Care

1. Always make sure the power switch is off before inserting the battery.
2. Use only the charger that came with your battery. Using the wrong one can be dangerous.
3. Only use compatible battery packs. Mixing types could lead to fire or injury.
4. Keep unused batteries away from metal objects like keys or screws—they could cause a short.
5. If battery liquid ever leaks, avoid touching it. If it gets on skin, wash thoroughly and get medical help.
6. Keep batteries away from heat or metal surfaces. Only charge in well-ventilated areas.
7. Don't use the tool in rain or wet conditions—water and electricity don't mix.
8. Never yank the cord to unplug it or use it to carry the charger. Keep the cord clean and free of damage.

Package Contents



Part No.	Description	Q'ty	Part No.	Description	Q'ty
1	Front or Rear Side Panel	2	7	Left Tire	1
2	Left or Right Side Panel	2	8	Dump Handle	1
3	Upper Handlebar	1	9	Main Frame	1
4	Lower Handlebar Frame	1	10	Charger	1
5	Caster Wheel	2	11	Battery	1
6	Right Tire	1	12	Bottom Panel	1

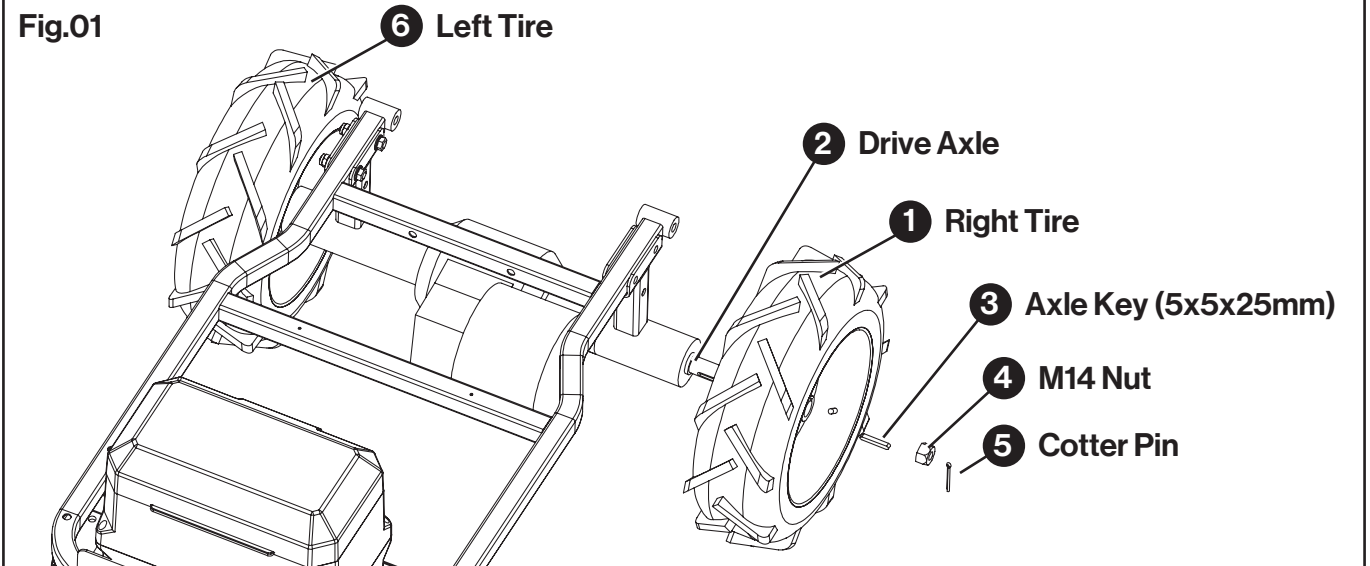
	Large R-Pin (x8)		Cotter Pin (x2)		Small R-Pin (x2)
	Right Panel Latch (x2)		M8x40 Bolt/Nut (x2)		Washer (x4)
	Left Panel Latch (x2)		M8x25 Bolt/Nut (x8)		Pin Bolt (x2)
	Axle Key 5x5x25 mm (x2)		M8x70 Bolt/Nut (x4)		M8x45 Bolt/Nut (x6)
			M14 Nut (x2)		

Assembly

Installing the Drive Wheels

1. Open the box and remove all parts. Set the cart base and tires aside for now.
2. Align the Right Rear Tire with the groove on the motor drive axle. Insert the Axle Key (5×5×25 mm) fully into the groove so the wheel locks onto the axle. Secure the tire with the Nut, then insert the Cotter Pin to lock it in place.
3. Repeat the same steps to install the Left Rear Tire.

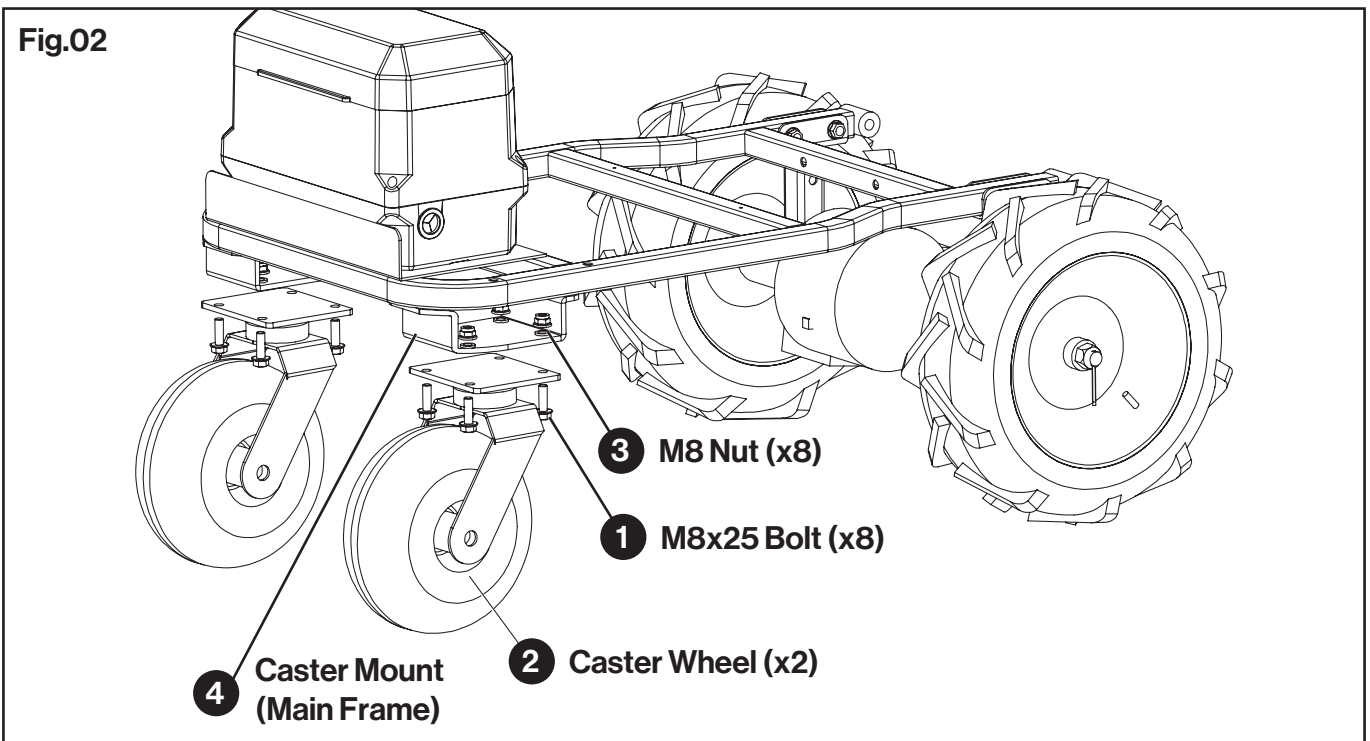
Fig.01



Installing the Caster Wheels

1. Use 4 Flange Bolts (M8×25) and 4 Flange Nuts (M8) to attach one Caster Wheel to the Main Frame.
2. Repeat the same steps to attach the second Caster Wheel.

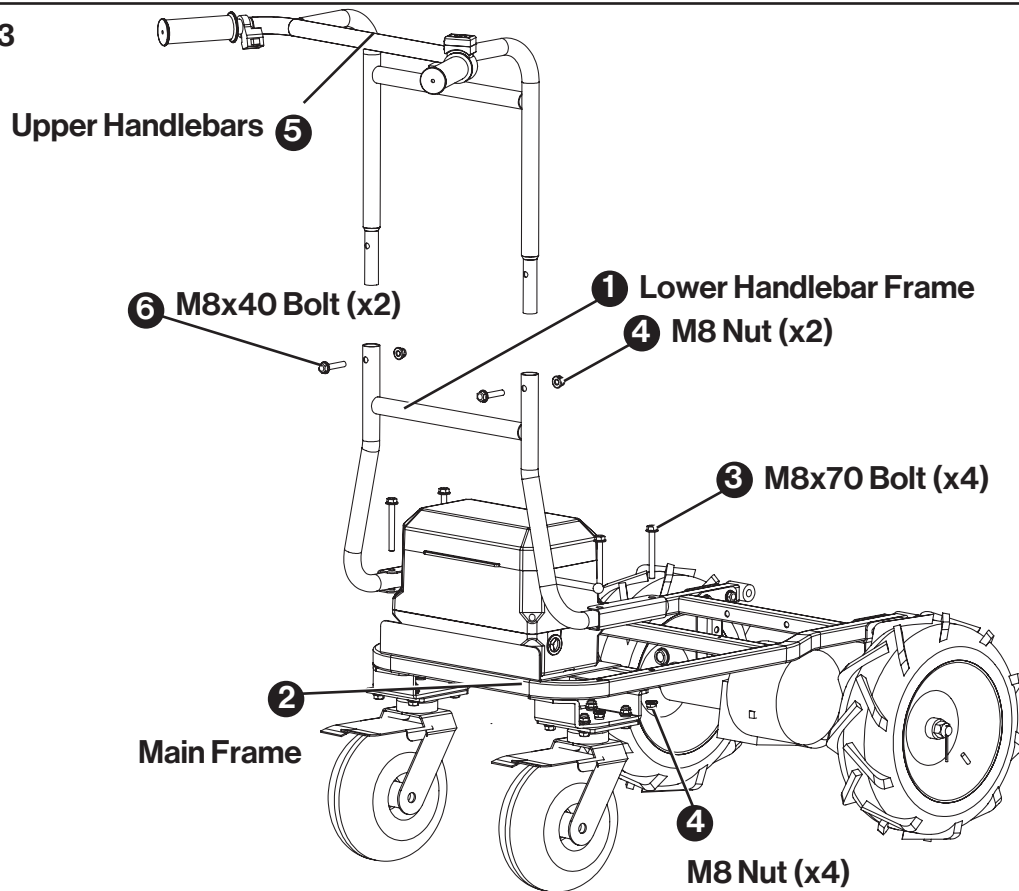
Fig.02



Assembling the Handlebars

1. Insert the Lower Handlebar Frame into the Main Frame, and secure it using 4 Flange Bolts (M8×70) and Flange Nuts (M8).
2. Slide the Upper Handlebar into the tubes of the lower handle, and fasten it with 2 Flange Bolts (M8×40) and Flange Nuts (M8). (Fig. 03)

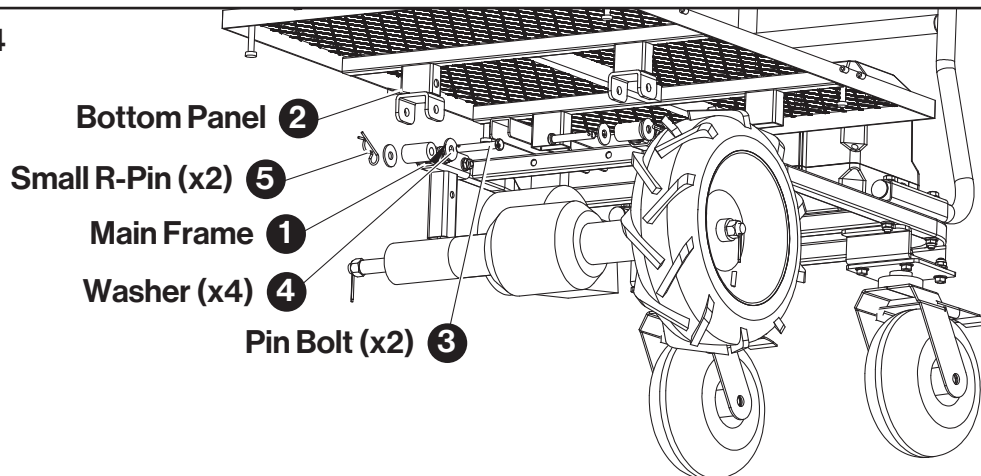
Fig.03



Install the Bottom Panel

1. Position the platform panel with the flat wire side facing up, and align the dumping handle groove toward the handle side.
2. Place the platform panel onto the main frame. Fasten it using 2 bolts and 4 washers, then lock it in place with small R-Pins (3.2×62 mm). (Fig. 04)

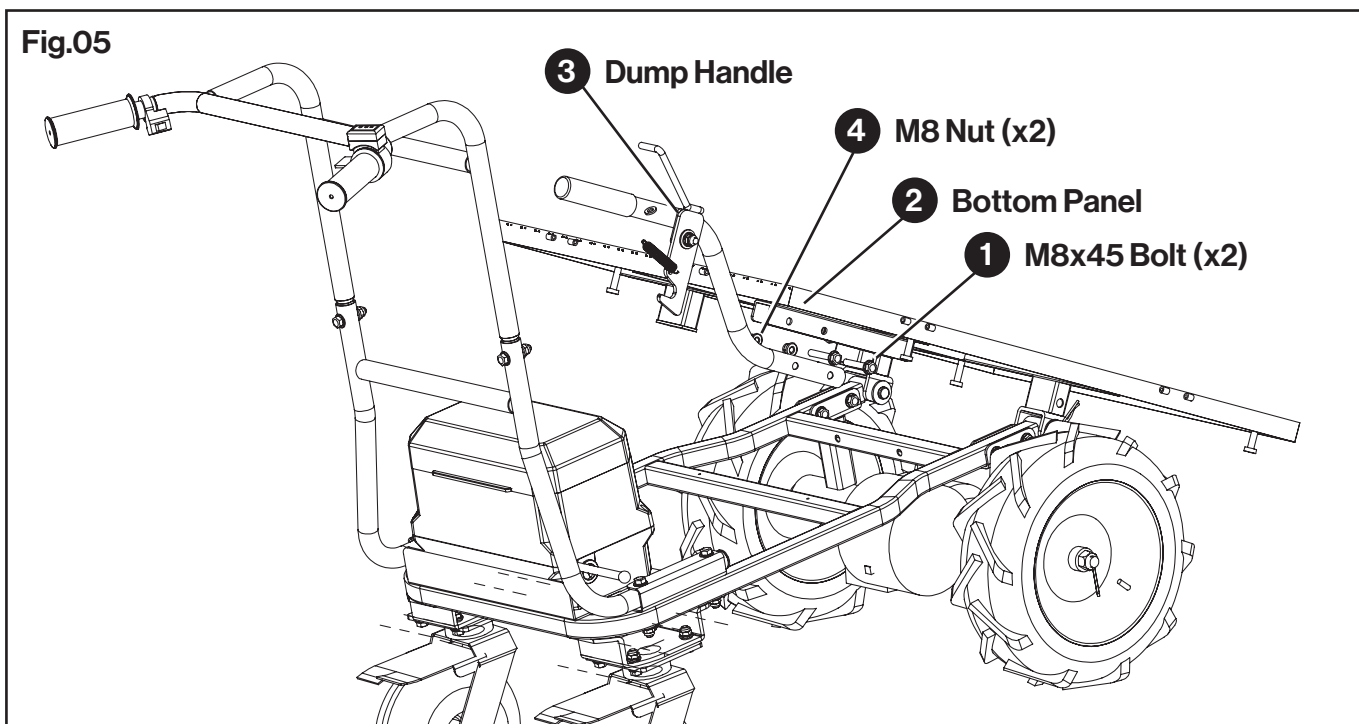
Fig.04



Installing the Dump Handle

1. Attach the dump handle to the platform panel using 2 flange bolts (M8×45) and flange nuts (M8). (Fig. 05)

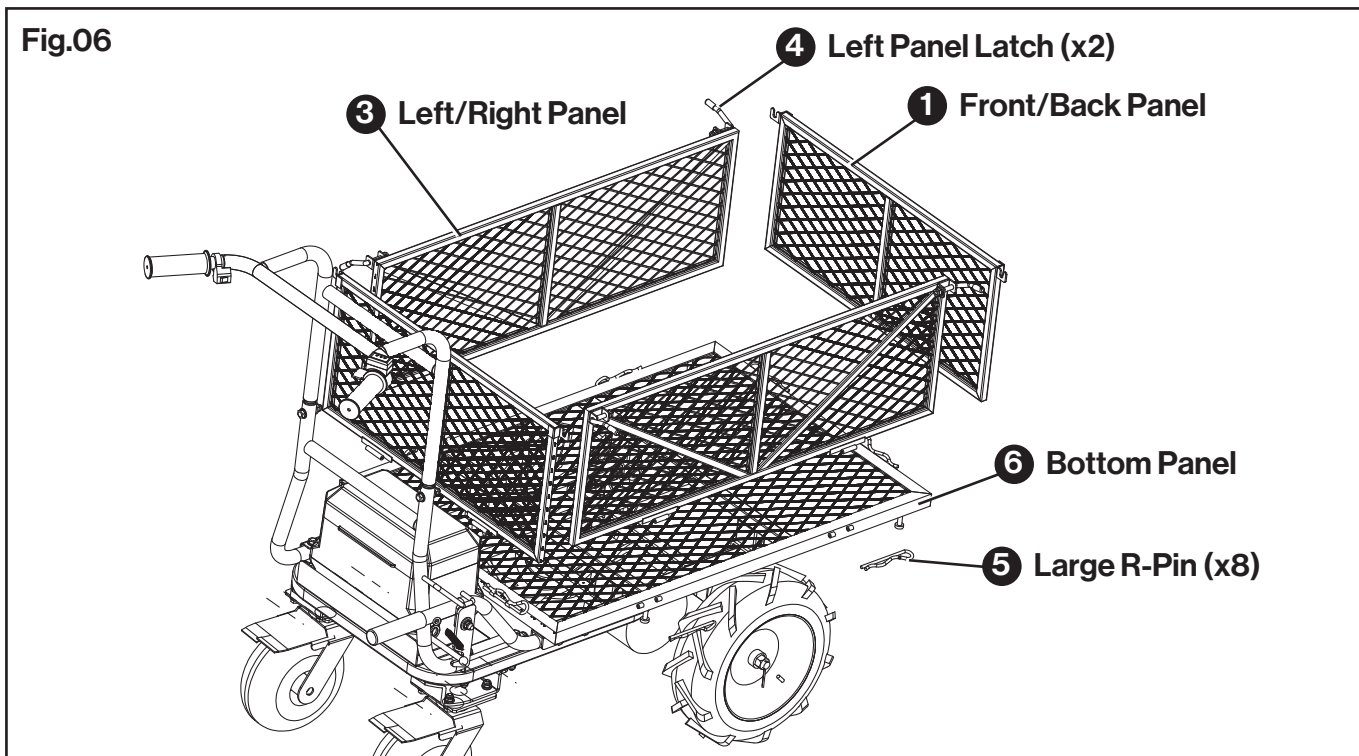
Fig.05



Assemble the Cart Panels

1. Insert the front & rear side panels and the left & right side panels into the platform panel, then secure each one using the Large R-Pins..
2. Once all panels are in place, lock them in by inserting the panel latches on each side. This completes the main cart assembly. (Fig. 06)

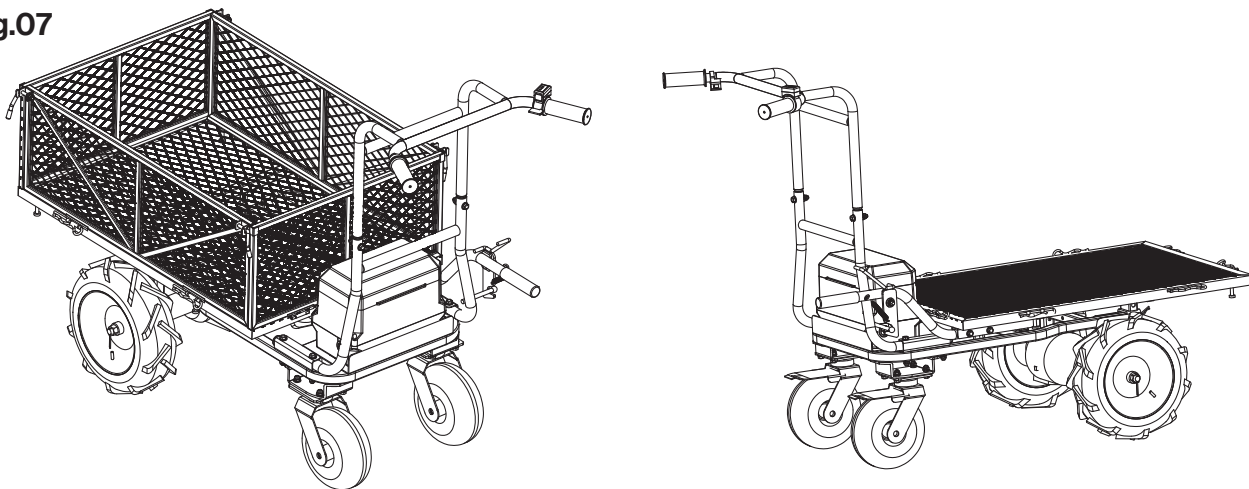
Fig.06



The power cart can be used with or without the side panels installed.

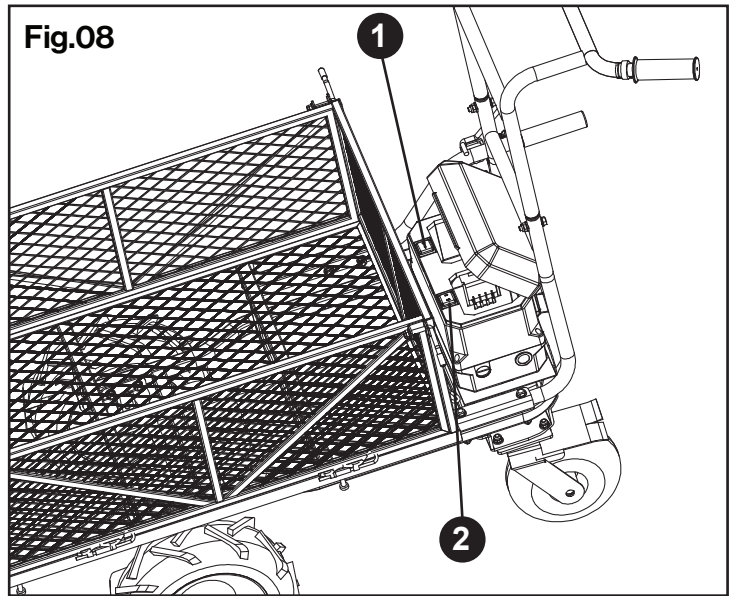
Removing the panels allows you to carry larger or unusually shaped items—but be sure to keep the load balanced and within the cart's rated capacity. **(Fig.07)**

Fig.07

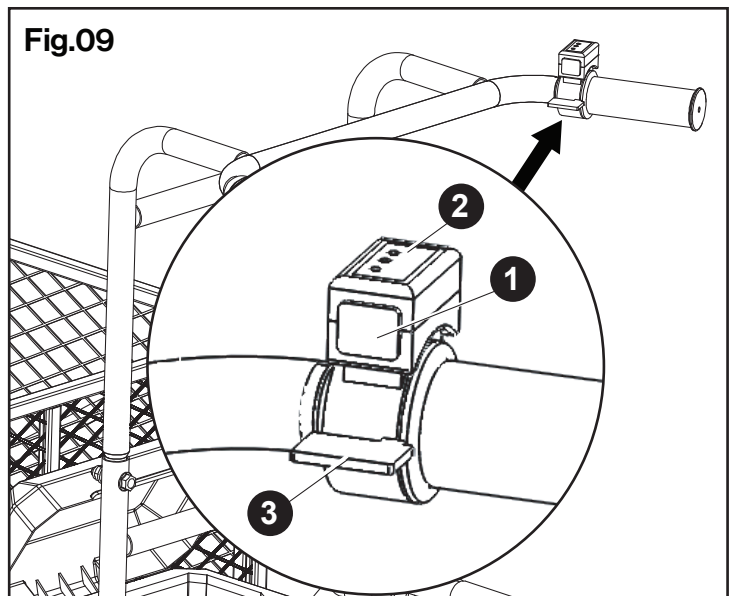


Operation

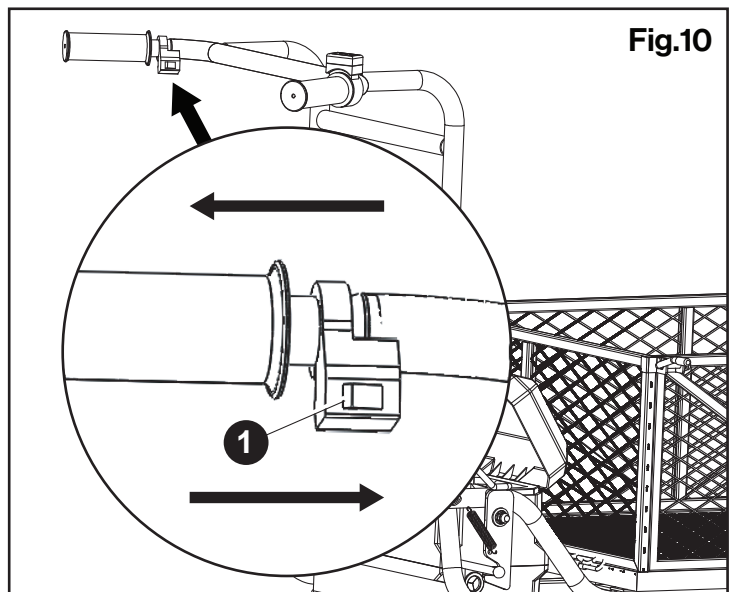
1. Open the battery box and turn on the power switch. There are two battery compartments—make sure the battery selector switch is set to the correct side. **(Fig.08)**



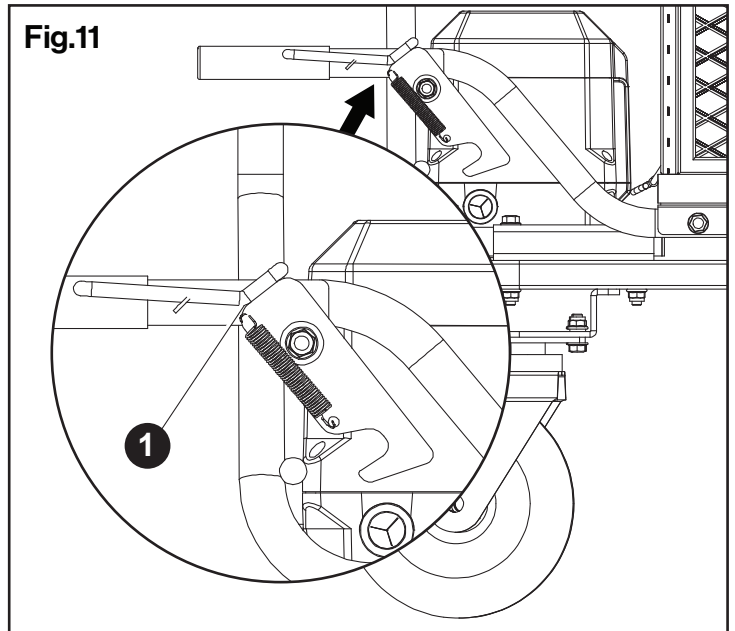
2. On the right handle, press the start button. The battery indicator will light up, showing all 3 LEDs when fully charged. Then press and hold the trigger to start moving. The more you press, the faster the cart goes. **(Fig.09)**



3. Use the direction switch on the left handle to change between forward and reverse. **(Fig.10)**



4. To dump the cart, release the lock lever from the dumping handle bracket, then lift the dumping handle to tilt the cart bed. Note: For optimal operation - remove the front panel. (Fig.11)



Checking Battery Level

While the cart is powered on, the battery indicator shows your charge level.

- If all 3 LED lights are on, the battery is fully charged.
- If the center orange light starts flashing, the battery is running low and should be recharged or swapped.
- If the lights turn red, the cart will stop automatically.

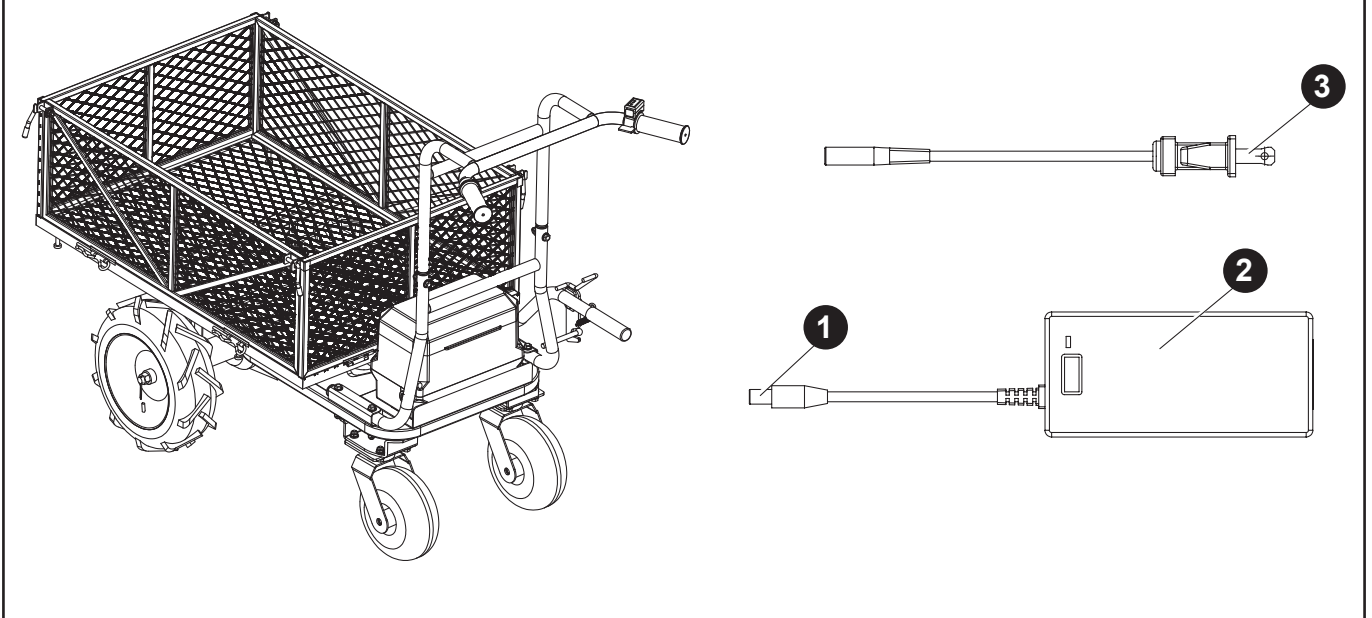
Charging the Battery

When the battery is low:

1. Open the battery box and remove the battery from the cart.
2. Connect the battery to the charger.
3. Plug the charger into a power source. Once the indicator light on the adapter turns green, charging is complete. Charging takes about 1.5–2 hours.

Only use the charger provided or specified by the manufacturer to protect battery life. (Fig. 12)

Fig.12



Warranty

Twelve (12) months for workmanship of the product, except for wearing parts. Warranty period starts from the product purchase date.

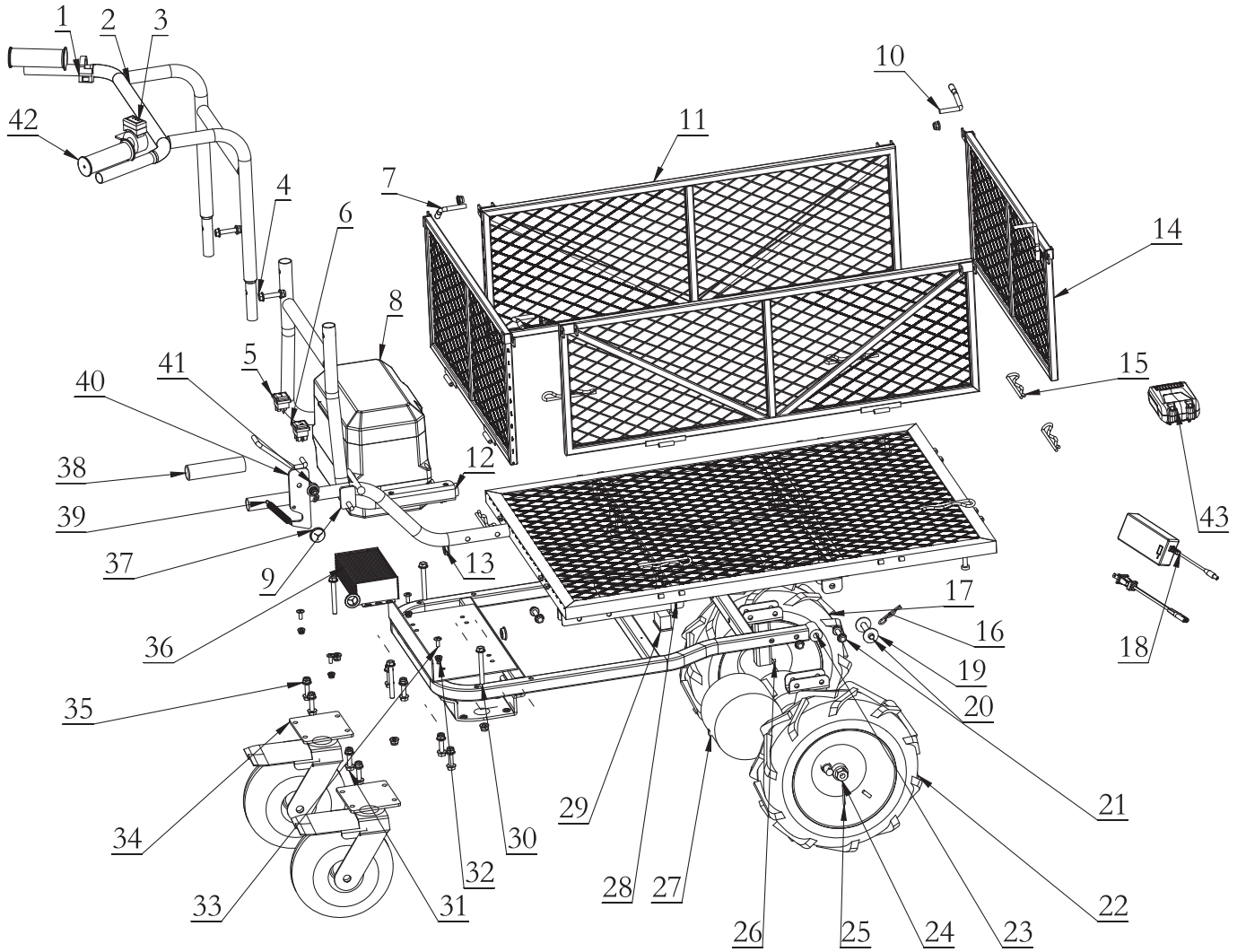
Warranty covers material quality and workmanship only.

Warranty does not cover product for issues caused by improper usage or any operation not in accordance with the specifications of this manual. Any modification or tampering with the product in any way voids the warranty.

Troubleshooting Chart

Issue	Possible Cause	Solution
The cart does not power on.	Battery is not charged.	Charge the battery pack according to the instructions included with your model.
	Electrical Fault - Loose or Disconnected Wire	Check all connectors and wires to make sure they're properly connected, undamaged, and secure.
	The motor controller is damaged.	Replace the Motor Controller Unit.
The cart feels underpowered.	Battery charge is low.	Check the battery indicator. Recharge the battery following the instructions provided with your model.
	Battery is old or no longer holding a full charge.	Replace the battery with a new one.
	Terrain or usage conditions are too demanding.	The cart is designed for residential use. Avoid steep slopes or rough terrain, as this may reduce performance.

Parts Breakdown



Part No.	Description	Q'ty	Part No.	Description	Q'ty
1	FWD/REV Switch	1	23	Main Frame	1
2	Upper Handlebar	1	24	M14 Nut	2
3	Throttle Switch	1	25	Cotter Pin	2
4	Hexagon Flange Bolts M8x40	2	26	Axle Key (5x5x25mm)	2
5	Power Switch	1	27	Drive Axle & Motor Assembly	1
6	Selection Switch	1	28	Bottom Panel	1
7	Left Panel Latch	2	29	Bump Stop	2
8	Battery Box	1	30	Hexagon Flange Bolts M8x70	4
9	Dump Handle	1	31	Hexagon Flange Bolts M8x25	8
10	Right Panel Latch	2	32	Hexagon Flange Bolts M6	4
11	Left/Right Panel	2	33	Cross Recessed Flat Head Screws M6x15	4
12	Lower Handlebar Frame	1	34	Caster Wheel	2
13	Wire Loom Clip Grommet	3	35	Non-metallic Insert Lock Nut M8	25
14	Front/Rear Panel	2	36	Motor Controller Unit	1
15	Large R-Pin	8	37	Rubber Plug	2
16	Small R-Pin	2	38	Dump Handle Grip	1
17	Left Tire	1	39	Dump Handle Spring	1
18	Charger	1	40	Dump Handle Latch	1
19	Washer (size 10)	4	41	Washer	2
20	Plug	2	42	Handlebar Grip	2
21	Hexagon Flange Bolts M8x45	6	43	Li-battery	1
22	Right Tire	1			



We appreciate your support!

superhandyus.com



Great Circle USA
Support Line: 1-866-493-0524
help@superhandyus.com
www.superhandyus.com



Follow us on social media
@SuperHandy