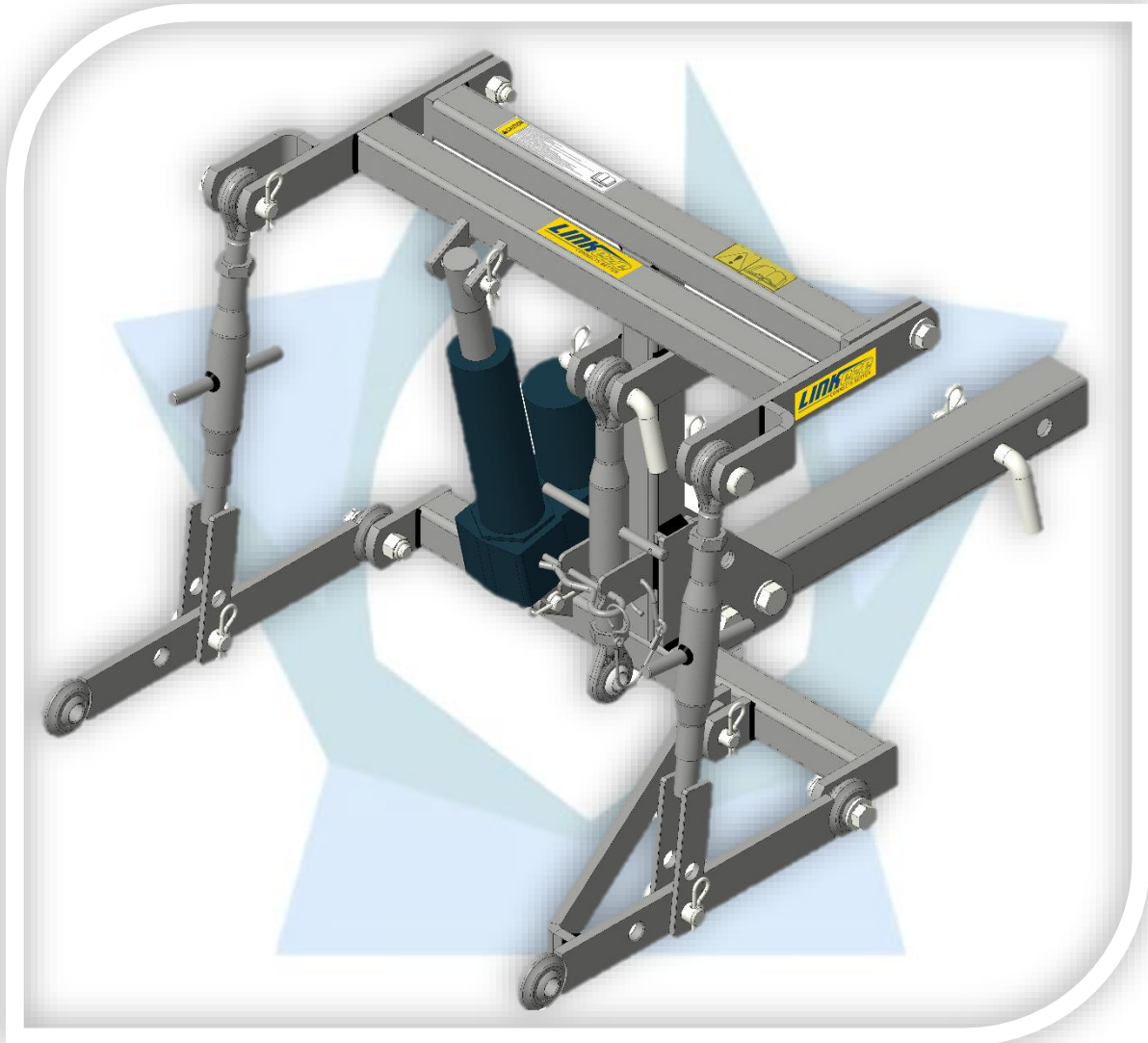


**ATV/UTV 3-POINT HITCH ASSEMBLY**  
**MODEL NUMBER – TPU/A001/MYY/A**  
**UNIPART ITEM CODE - 40TPUA001**

**Operator's Assembly and Items Manual – A00-RD-AM-01**



SCAN ME  
FOR EXAMPLE



## INTRODUCTION

Thank you for your choice of a Uniparts ATV/UTV 3-POINT HITCH attachment. It has been manufactured as per the highest quality standards. Safe, efficient and trouble-free operation of the 3-POINT HITCH requires you to read and follow all the instructions in this manual and the manual for the ATV/UTV machine. Do not take chances with safety.

Record the serial number of the 3-POINT HITCH attachment in the space provided as it will be required each time, service or warranty information is requested.



Model Number \_\_\_\_\_

Serial Number \_\_\_\_\_

- The most important safety device on this machine is the operator. You are responsible for the safe operation of the unit.
- Do not allow anyone to use or operate the unit unless they have been trained in its use.

**Machine Orientation:** The drawbar is the front of the machine and the 3-point hitch is the rear.



## \*\*\*Caution\*\*\*


### Please Read and Follow all instructions before installation and operation of the “ATV/UTV 3-Point Hitch Assembly”

- Always read your ATV's/UTV's Owner Manual instructions regarding the use of aftermarket accessories and the safe operation of your ATV/UTV.
- Always follow your ATV/UTV manufacturer's maximum recommended towing capacities OR Weight towing capacity of Three-point Linkage System should not exceed 300LBS Max. (136 KG Max) and which one lower Lift capacity should be followed.
- 12 V electric actuator does the heavy lifting work with duty cycle 25%- or 2-Max. continuous operation in 2 Minute.
- Operating an ATV/UTV with accessories or additional implements secured to the ATV/UTV may affect the handling of the ATV/UTV, including breaking, steering, stopping, and turning.
- Excessive speeds can result in a loss of control and can cause serious personal injuries or death. Do not exceed 5 MPH when the “3-Point Hitch Assy” or any accessories are secured to the ATV/UTV.
- Always monitor your ATV's/UTV's engine while using the “3-Point Hitch Assy” and its implements to prevent overheating of engine and its components. Take periodic breaks to allow for the engine to cool.
- Never carry passengers on your ATV/UTV unless your ATV/UTV is designed to carry more than one person.
- Never use the “3-Point Hitch Assy” or any of its implements to carry a person.
- Keep hands and feet away from all “3-Point Hitch Assy” parts and implements while operating the ATV/UTV.
- Never place yourself or any part of your body under, between or on any part of “3-Point Hitch Assy” or it's implements while operating the ATV/UTV or using the implements.
- Always use caution when removing and replacing either the “3-Point Hitch Assy” or its implements; they are heavy, and assistance may be required.
- Always maintain proper balance and weight distribution of your ATV/UTV; you may need to add weight to the opposite end of the ATV/UTV to counterweight loaded via the “3-Point Hitch Assy”.
- Please ensure all the fasteners to be properly torqued as per standard to prevent unexpected separation.
- Always wear personal protective equipment (PPE) while operating the ATV/UTV for your safety.
- **CAUTION: BE AWARE OF “PINCH POINTS” TO PREVENT BODY INJURY.**

## MAINTENANCE

At the beginning and end of every season apply light machine oil to all bolts, pins and especially to all the swivel balls at the ends of the Lower Link Assemblies and frame extension. Failure to lubricate the swivel balls can cause them to seize and not move.

# CAUTION

- Read and follow ATV/UTV manual instructions. 
- Attachments change machine handling characteristics. Slow down. Do not exceed a safe travel speed when hitch is loaded.
- Add ballast on front frame to keep at least 20% of machine weight on front wheels to maintain steering control.
- Never carry passengers on 3 point hitch.
- Keep hands, arms and feet away from moving 3 point hitch components.
- Use 2 people when attaching and unhooking load from 3 point hitch.
- Do not drive across steep slopes to prevent tipping over.
- Always use retainers on mounting pins to prevent unexpected separation.
- Do not exceed engine towing capacity. Stop to allow engine to cool if overheating.
- Always follow your ATV/UTV manufacturer's maximum recommended towing capacities or weight towing capacity.
- 3 point linkage system loading and lower link lift capacity should not exceed 300 lbs. Maximum (136 kg Max.).
- Do not exceed the 12 V electric actuator duty cycle of 25% continuous operation or 2 maximum lifts in 2 minutes.

29DCL001

North American Version



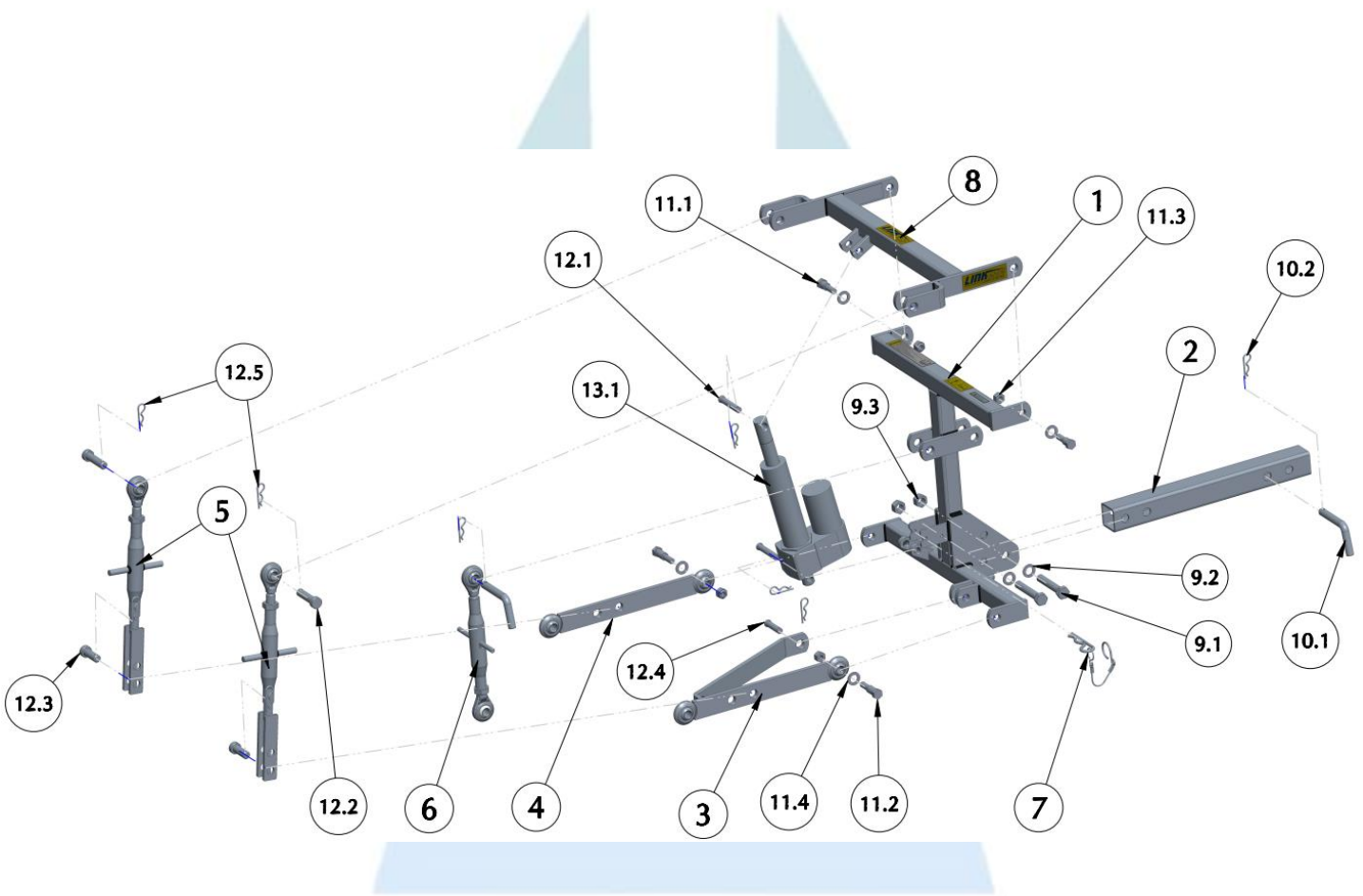
European Union Version



**LIST OF KIT ITEMS (40TPUA001)**  
**(All Dimensions are in Inch)**

<b><u>S.NO</u></b>	<b><u>DESCRIPTION</u></b>	<b><u>ITEM NUMBER</u></b>	<b><u>ORDER ITEM NUMBER</u></b>	<b><u>QTY.</u></b>
1	Main Frame	33BKAA230S	33BKAA230S	1
2(A)	Long Tow Bar for UTV	33TUBA026S	33TUBA026S	1
2(B)	Short Tow Bar for ATV	33TUBA027S	33TUBA027S	1
3	Lower Link with Stabilizer (RH)	17STVA942S	17STVA942S	1
4	Lower Link with Ball Swivels (LH)	17STVA943S	17STVA943S	1
5	Adjustable Lift Rod Assembly	30LEBA030S	30LEBA030S	2
6	Top Link Assembly	11STLA359S	11STLA359S	1
7	R-Clip Chain Assembly	22SMCA234S	22SMCA234S	1
8	Upper Lift Arm	33BKAA229S	33BKAA229S	1
9.1	Hex Bolt for Tow Bar (5/8"-11, L 3-3/4")	22HHBA073S	22KITA430	2
9.2	Flat Washer (5/8")	22FLWA084S		2
9.3	Nylock Nut for Tow Bar (5/8"-11, W 3/4")	22NYTA040S		2
10.1	Bent Hitch Pin (D 5/8", L 3")	18BHPA094S	22KITA428	2
10.2	R-Clip (D 1/8")	22RCIA069S		2
11.1	Hex Bolt for Upper Lift Arm (1/2"-13, L 2-9/64")	22HHBA075S	22KITA457	2
11.2	Hex Bolt for Lower Link (1/2"-13, L 2-9/16")	22HHBA074S		2
11.3	Nylock Nut for Upper Lift Arm & Lower Link (1/2"-13, W 9/16")	22NYTA038S		4
11.4	Flat Washer (5/8")	22FLWA084S		4
12.1	Actuator Pin (D 1/2", L 2-21/32")	18RHPA007S	22KITA429	2
12.2	Round Head Pin for Upper Lift Arm (D 5/8", L 2")	18RHPA008S		2
12.3	Round Head Pin for Lower Link (D 5/8", L 1-3/8")	18RHPA009S		2
12.4	Stabilizer Pin (D 1/2", L 1-27/32")	18RHPA006S		1
12.5	R-Clip (D 1/8")	22RCIA069S		7
13.1	Electric Linear Actuator	52ELA001S	52ELAA002	1
13.2	WIRE HARNESS ASSY	29EWHA001S		1

## EXPLODED VIEW – ATV/UTV 3-POINT HITCH ASSEMBLY





## **ATV/UTV 3-POINT HITCH ASSEMBLY STEPS**

Please read through the entire instruction manual once before proceeding.

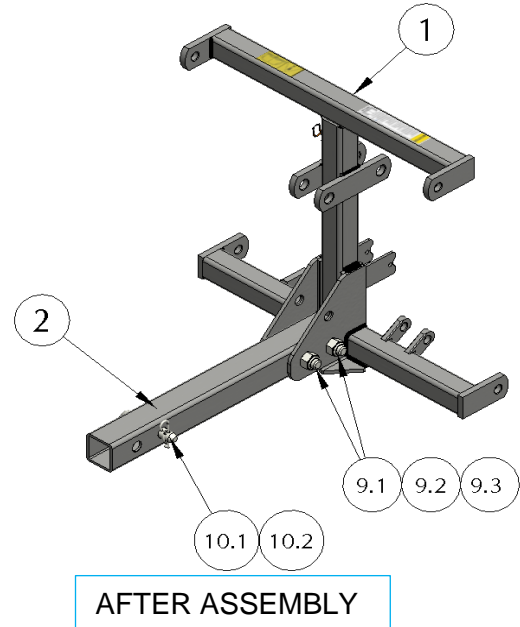
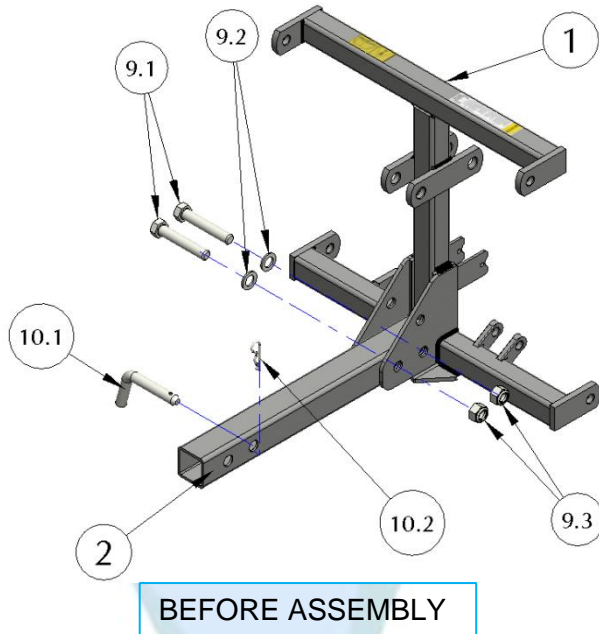
- The 3-point hitch is shipped in a cardboard box broken down into its component parts. These parts must be assembled prior to use.



- Make sure to have an adjustable Wrench Set before assembling the parts.
- Clean and clear the dirt or debris that might hinder the assembly of your ATV/UTV 3-point hitch assembly from the area where you are working.
- Open the box and lay out the content. Use the packing list to verify that all the contents have been included in the shipping box. Contact the distributor or factory if something is missing.
- We recommend that you lubricate all threaded bolts, nuts, Adjustable Lift Rod Assembly & Top Link Assembly threaded portion before assembly to prevent rust and corrosion.

**Follow the steps mentioned next, to assemble the 3-Point Hitch.**

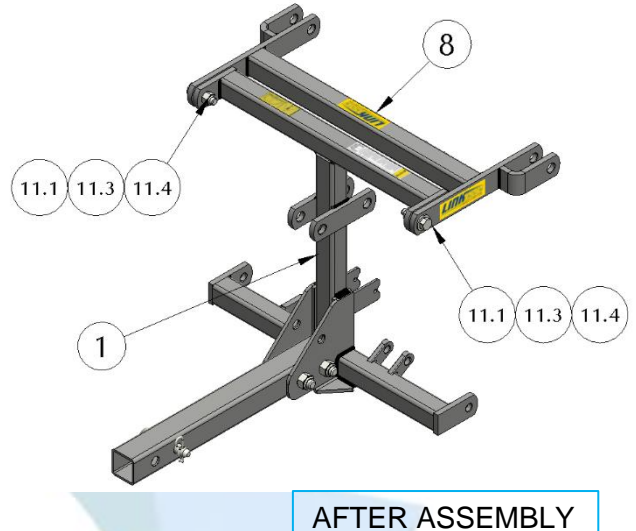
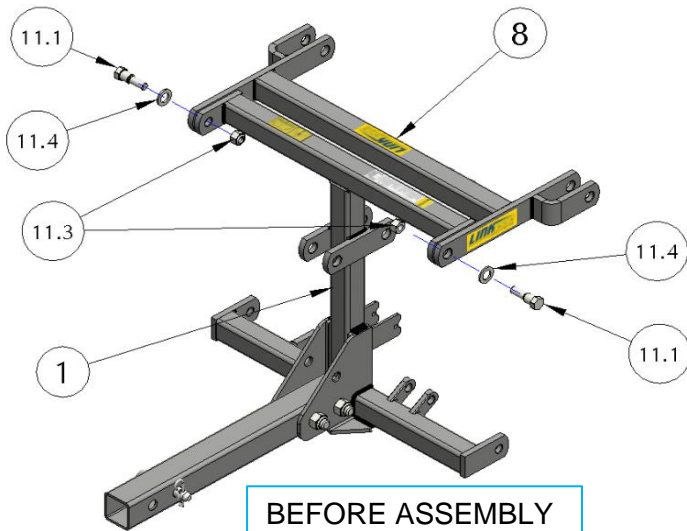
## STEP 1



1. Locate (#1) Main Frame & (#2) Short Tow Bar for ATV/Long Tow Bar for UTV. NOTE: For ATV please use (#2B) 33TUBA027 the Short Tow Bar and for UTV please use (#2A) 33TUBA026 the Long Tow Bar.
2. Locate (#9.1) Hex Bolt for Tow Bar (5/8"-11, L 3-3/4"), (#9.2) Flat Washer (5/8"), (#9.3) Nylock Nut for Tow Bar (5/8"-11, W 3/4"), (#10.1) Bent Hitch Pin (D 5/8", L 3"), (#10.2) R-Clip (D 1/8").  
At this time determine the size of the Tow bar for ATV/UTV compatibility likely to be installed.
3. Insert the & (#2) Short Tow Bar for ATV/Long Tow Bar for UTV into the bracket on the (#1) Main Frame. Secure using the (#9.1) Hex Bolt for Tow Bar (5/8"-11, L 3-3/4"), (#9.2) Flat Washer (5/8"), (#9.3) Nylock Nut for Tow Bar (5/8"-11, W 3/4").
4. Secure (#10.1) Bent Hitch Pin (D 5/8", L 3") to (#2) Short Tow Bar for ATV/Long Tow Bar for UTV with (#10.2) R-Clip (D 1/8").

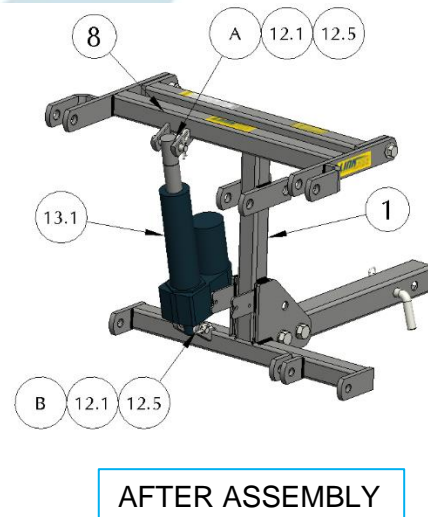
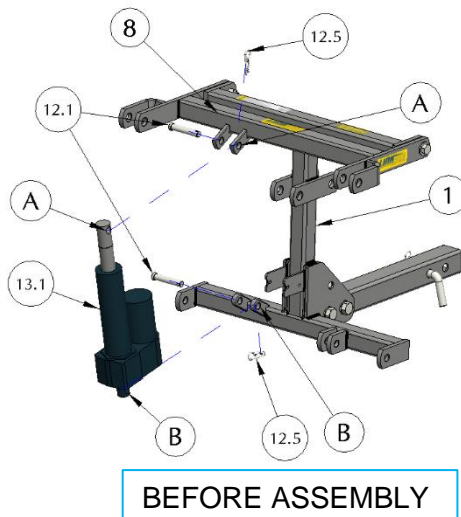


## STEP 2



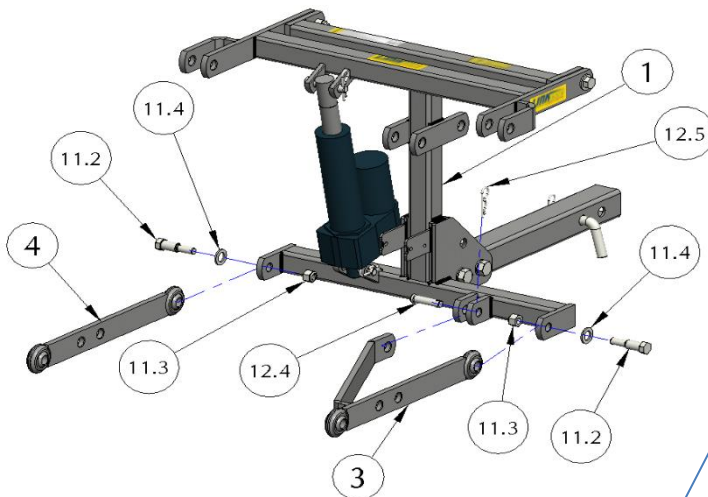
1. Locate (#8) Upper Lift Arm and (#1) Main Frame.
2. Locate (#11.1) Hex Bolt for Upper Lift Arm (1/2"-13, L 2-9/64"), (#11.3) Nylock Nut for Upper Lift Arm & Lower Link (1/2"-13, W 9/16") (#11.4) Flat Washer (5/8").
3. Position (#11.4) Flat Washer (5/8") (#11.1) Hex Bolt for Upper Lift Arm (1/2"-13, L 2-9/64") and (#11.3) Nylock Nut for Upper Lift Arm & Lower Link (1/2"-13, W 9/16"), (#11.1) Hex Bolt for Upper Lift Arm (1/2"-13, L 2-9/64").
4. Secure (#8) Upper Lift Arm to (#1) Main Frame with (#11.3) Nylock Nut for Upper Lift Arm & Lower Link (1/2"-13, W 9/16"). Repeat for other side.

## STEP 3

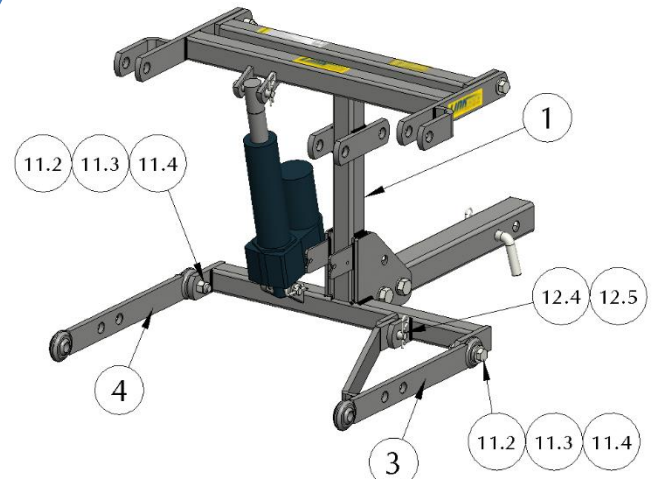


1. Locate (#13.1) Electric Linear Actuator, (#12.1) Actuator Pin (D 1/2", L 2-21/32"), (#12.5) R-Clip (D 1/8")
2. Match **A** to **A**, **B** to **B**, secure (#13.1) Electric Linear Actuator to (#8) Upper Lift Arm and (#1) Main Frame with (#12.1) Actuator Pin (D 1/2", L 2-21/32") & (#12.5) R-Clip (D 1/8").

## STEP 4



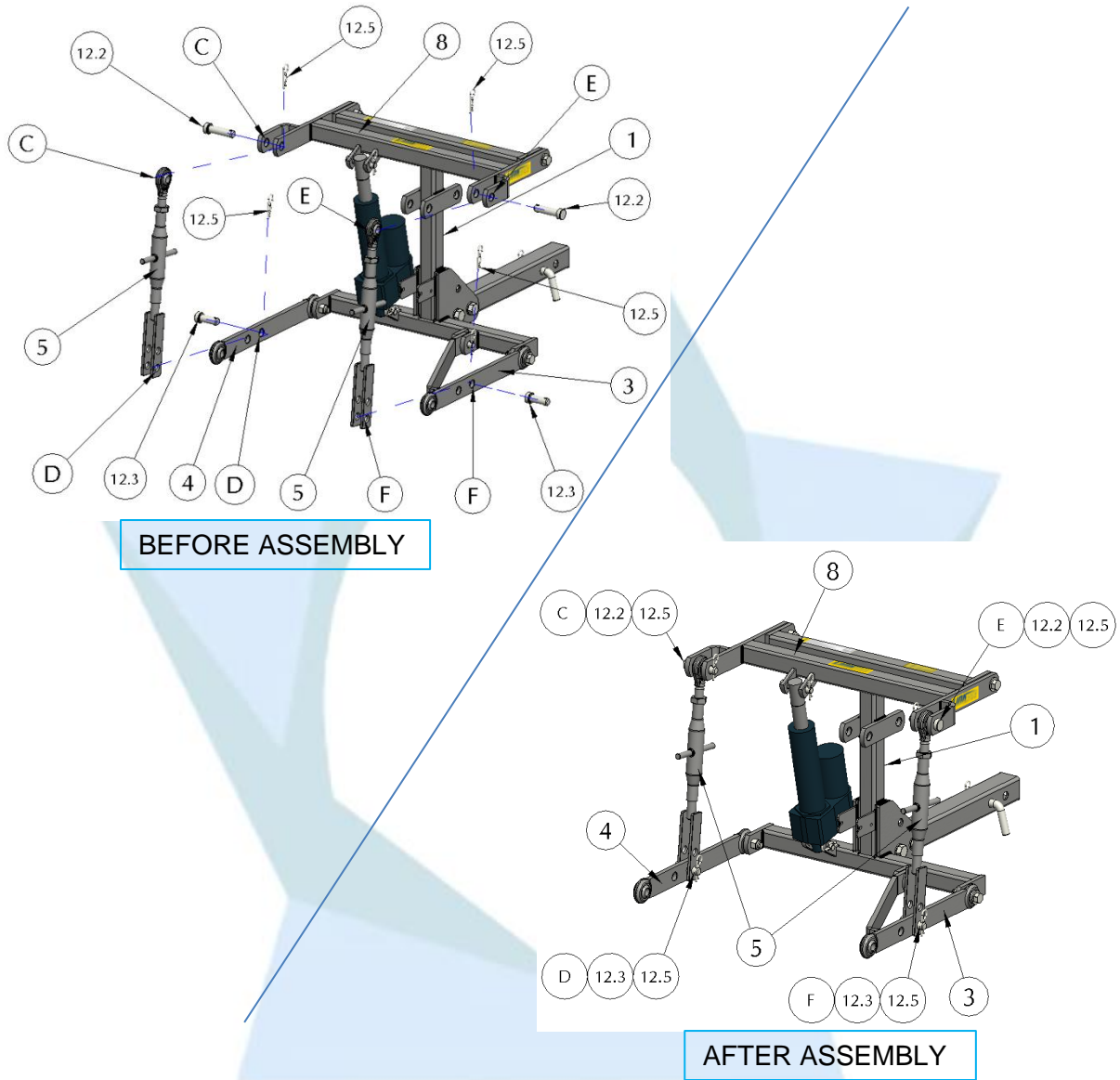
BEFORE ASSEMBLY



AFTER ASSEMBLY

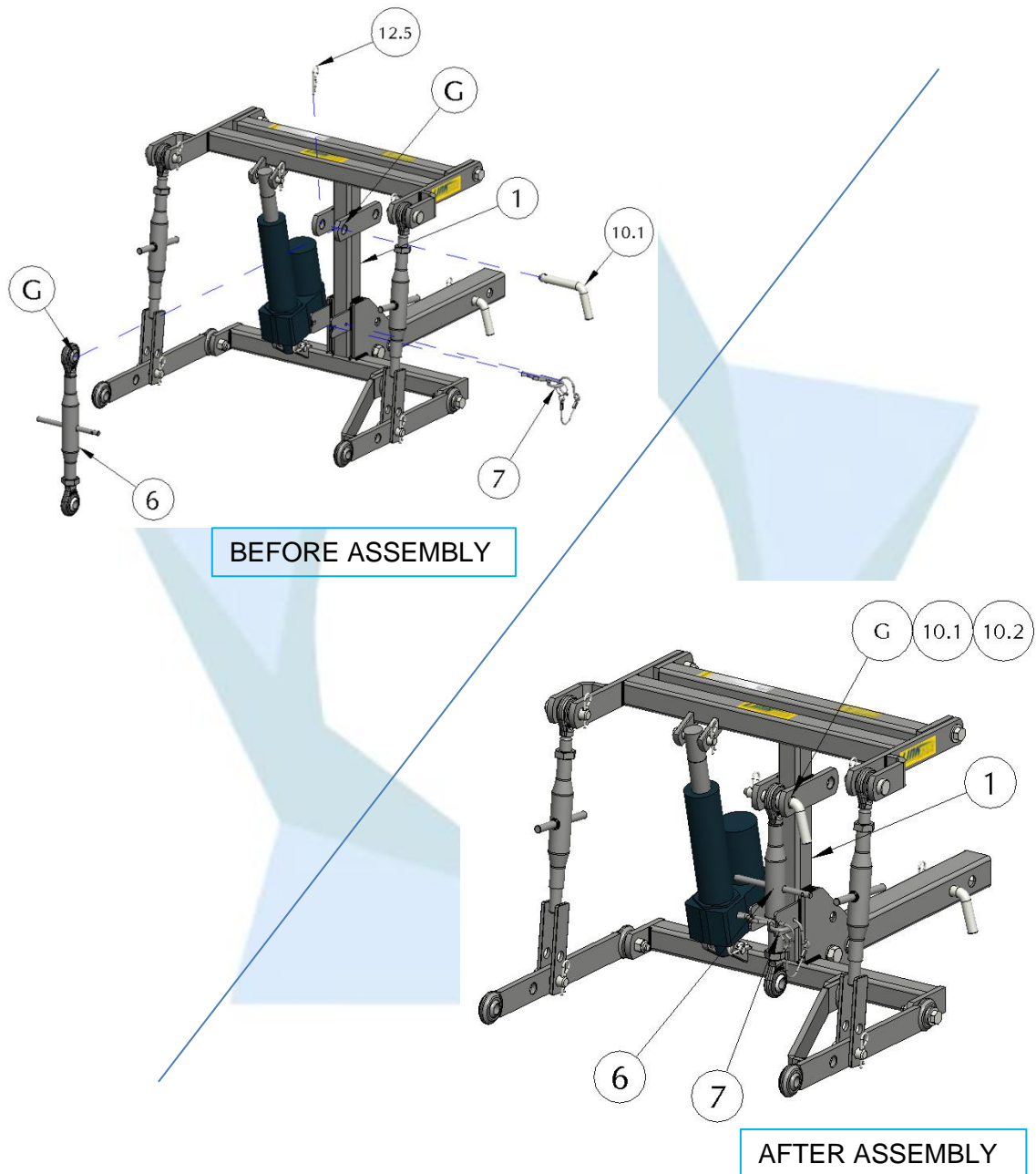
1. Locate (#3) Lower Link with Stabilizer (RH), (#4) Lower Link with Ball Swivels (LH) & (#1) Main Frame.
2. Locate (#11.2) Hex Bolt for Lower Link (1/2"-13, L 2-9/16"), (#11.3) Nylock Nut for Upper Lift Arm & Lower Link (1/2"-13, W 9/16"), (#12.5) R-Clip (D 1/8"), (#11.4) Flat Washer (5/8"), (#12.4) Stabilizer Pin (D 1/2", L 1-27/32").
3. Secure (#4) Lower Link with Ball Swivels (LH) to the left bottom of (#1) Main Frame with (#11.2) Hex Bolt for Lower Link (1/2"-13, L 2-9/16"), (#11.4) Flat Washer (5/8") and (#11.3) Nylock Nut for Upper Lift Arm & Lower Link (1/2"-13, W 9/16"). Then secure (#3) Lower Link with Stabilizer (RH) to the bottom right side of (#1) Main Frame with (#12.5) R-Clip (D 1/8"), (#12.4) Stabilizer Pin (D 1/2", L 1-27/32"), (#11.2) Hex Bolt for Lower Link (1/2"-13, L 2-9/16"), (#11.3) Nylock Nut for Upper Lift Arm & Lower Link (1/2"-13, W 9/16") & (#11.4) Flat Washer (5/8").

## STEP 5



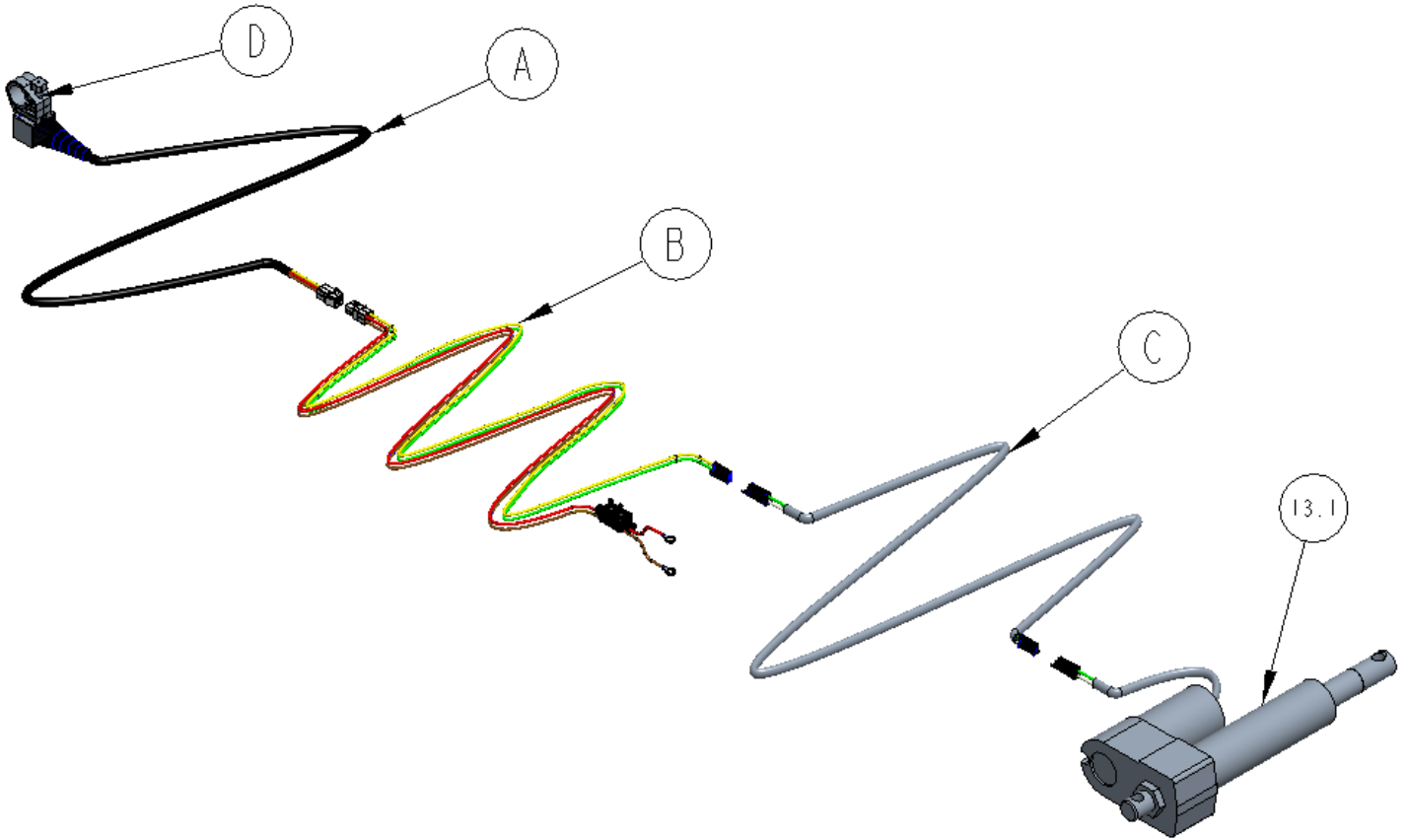
1. Locate (#1) Main Frame, (#5) Adjustable Lift Rod Assembly, (#8) Upper Lift Arm, (#4) Lower Link with Ball Swivels (LH), (#3) Lower Link with Stabilizer (RH).
2. Locate (#12.2) Round Head Pin for Upper Lift Arm (D 5/8", L 2"), (#12.3) Round Head Pin for Lower Link (D 5/8", L 1 3/8") & (#12.5) R-Clip (D 1/8").
3. Match **C** to **C**, **D** to **D**, **E** to **E** & **F** to **F**, secure the couple of (#5) Adjustable Lift Rod Assembly to the bothsides of (#8) Upper Lift Arm with (#12.2) Round Head Pin for Upper Lift Arm (D 5/8", L 2") & (#12.5) R-Clip (D 1/8") and at bottom of (#4) Lower Link with Ball Swivels (LH) & (#3) Lower Link with Stabilizer (RH) with (#12.3) Round Head Pin for Lower Link (D 5/8", L 1-3/8") & (#12.5) R-Clip (D 1/8").

## STEP 6



1. Locate (#1) Main Frame, (#6) Top Link Assembly.
2. Locate (#10.1) Bent Hitch Pin (D 5/8", L 3"), (#10.2) R-Clip (D 1/8") & (#7) R-Clip Chain Assy.
3. Match **G** to **G**, secure the (#6) Top Link Assembly to (#1) Main Frame with (#10.1) Bent Hitch Pin (D 5/8", L 3") & (#10.2) R-Clip (D 1/8"). Then fix the top link with (#7) R-Clip Chain Assy to avoid collision of (#6) Top Link Assembly with other parts.

## WIRE HARNESS (52ELAA002) INSTALLATION INSTRUCTION

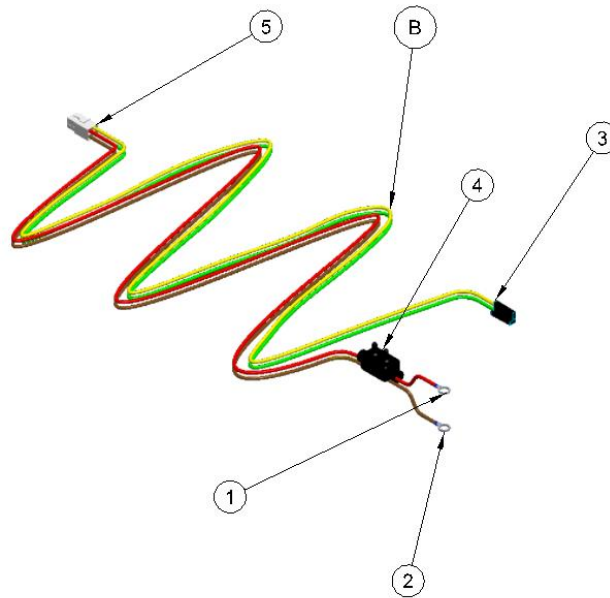


### LIST OF COMPONENTS (52ELAA002) (All Dimensions are in Inch)

<u>S.NO.</u>	<u>DESCRIPTION</u>	<u>ORDER ITEM NUMBER</u>	<u>QTY.</u>
A	Switch Cable (L50")	29EWHA001S	1
B	Battery Cable with Circuit Breaker (L 62 3/5")		1
C	Actuator Cable (L62")		1
D	Clamp Assembly		1
13.1	Electric linear Actuator	52ELA001S	1

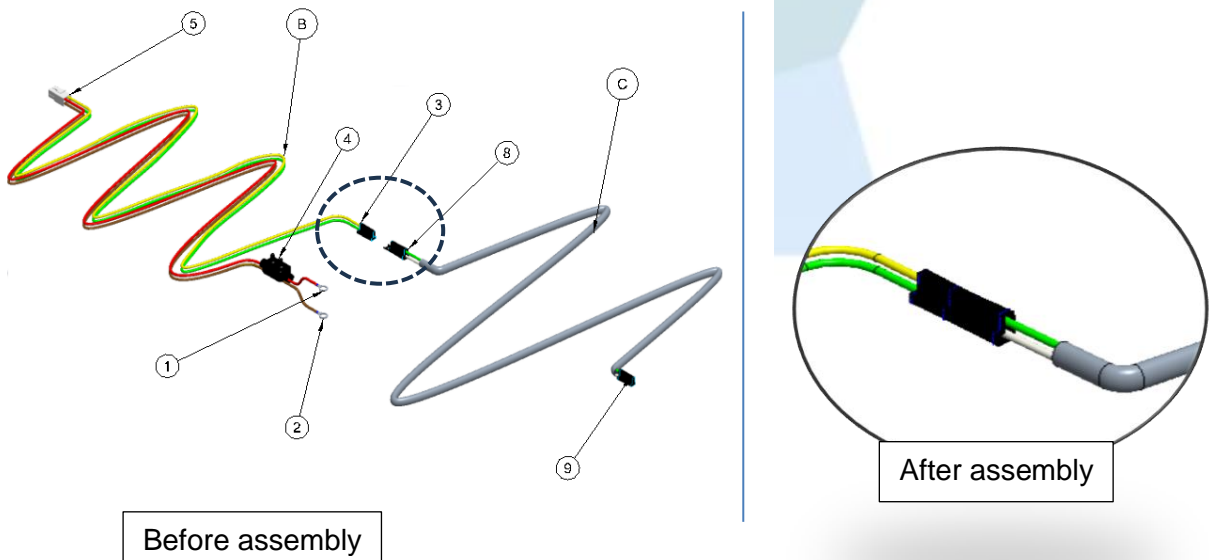
## WIRE HARNESS ASSEMBLY STEPS

### STEP 1



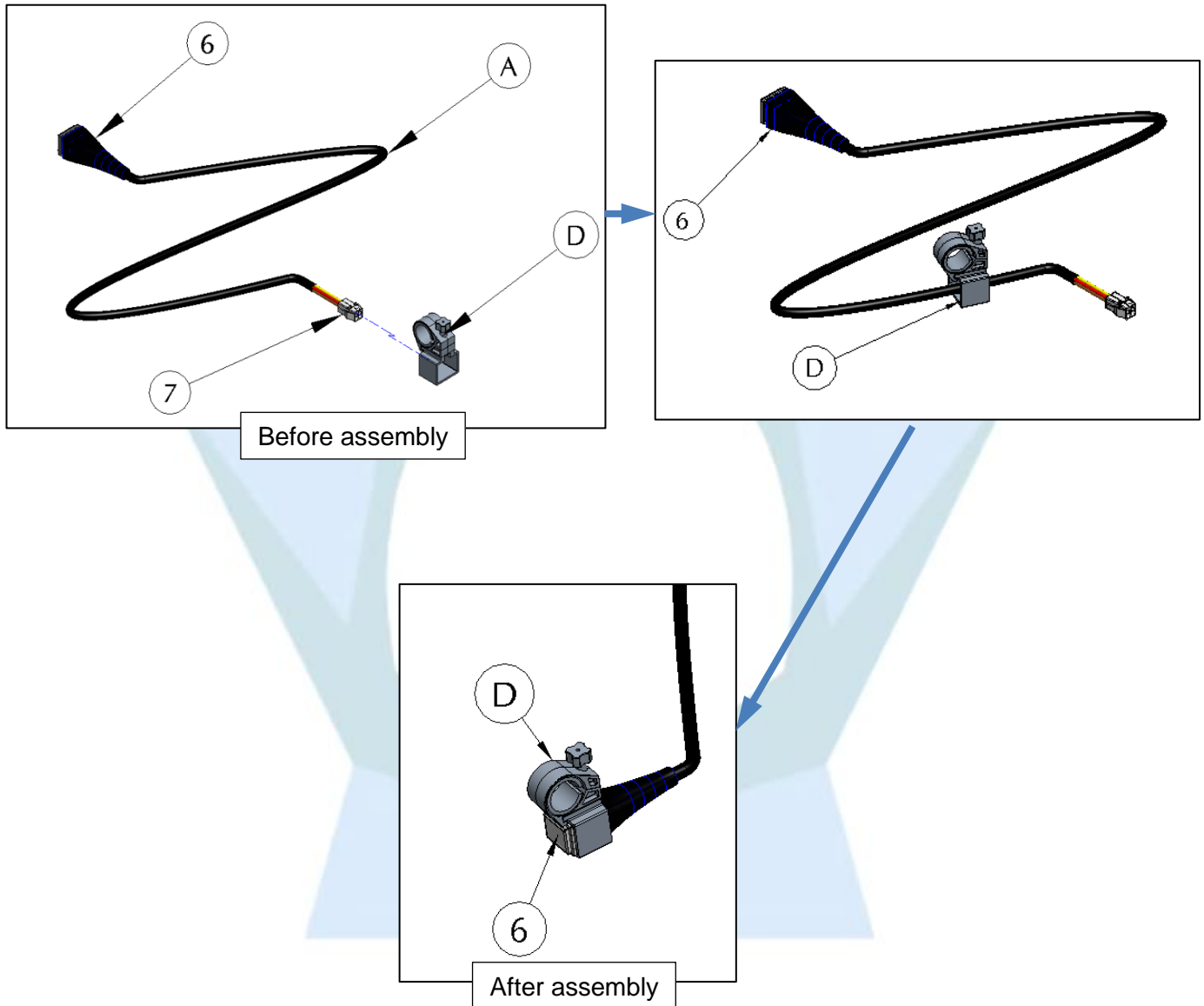
1. Battery cable has 4 connection Points (1,2,3 and 5)
2. Terminals "1" and "2" are connected to the Positive and negative ends of the Battery with the help of a bolt.

### STEP 2



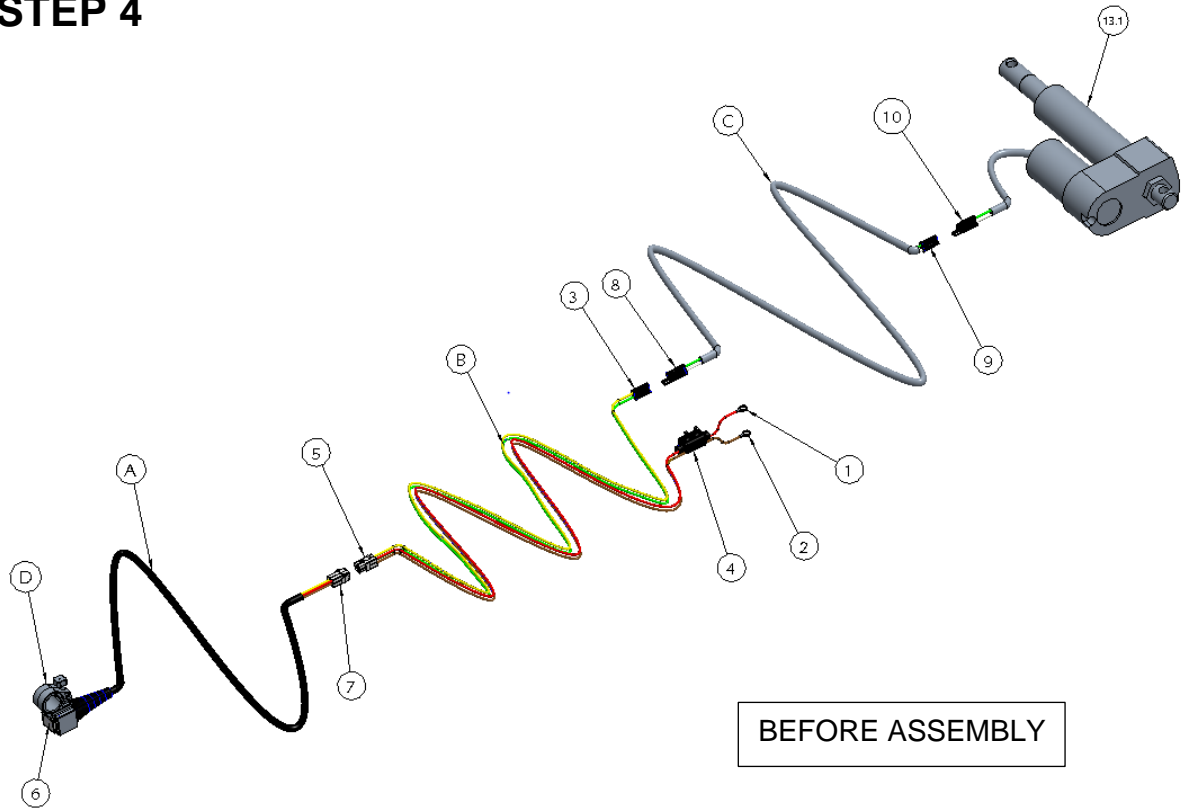
1. Terminal "3" is a male coupler which connects with the female coupler of Actuator cable (Terminal "8").

### STEP 3



1. Clamp is Inserted from the Terminal "7" side and is locked on the switch- Terminal "6". The clamp is used to mount the Wire Harness Assy on the ATV/UTV vehicle.

## STEP 4



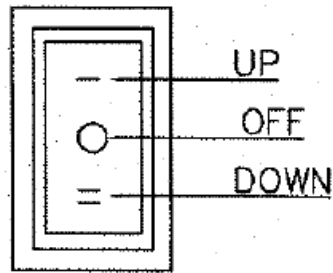
TERMINAL CONECTION TABLE	
TERMINAL - 1	BATTERY END
TERMINAL - 2	BATTERY END
TERMINAL - 3	TERMINAL - 8
TERMINAL - 5	TERMINAL - 7
TERMINAL - 9	TERMINAL - 10

- Terminal "5" is a 4 pin Male coupler which connects with 4 pin female coupler of Switch cable (Terminal "7").
- A Circuit breaker is also provided in this cable to ensure the Safety of complete circuit at high load condition. This does not require any connection, it is preinstalled. Marked as "4" in image.
- Switch Cable has two ends "6" and "7".
- End "6" has a Rocker Switch which is used to control the movement of (#13.1) Electric linear Actuator (up and Down movement).
- End "6" is also provided with an attachment (clamp "d"), for mounting the Wire Harness Assy on vehicle. The harness comes with 2 pieces of different thickness rubber strips to make up for the different diameter handlebars.
  - Undo the turn knob on the rocker switch.
  - Slip the rocker switch around the handlebar utilizing the rubber strips if necessary.
  - Retighten the turn knob.
  - Check to be sure the rocker switch is held securely on handlebars of ATV/UTV.
- Terminal "1" and "2" should be connected to the battery at the last, after making all the other



connections.

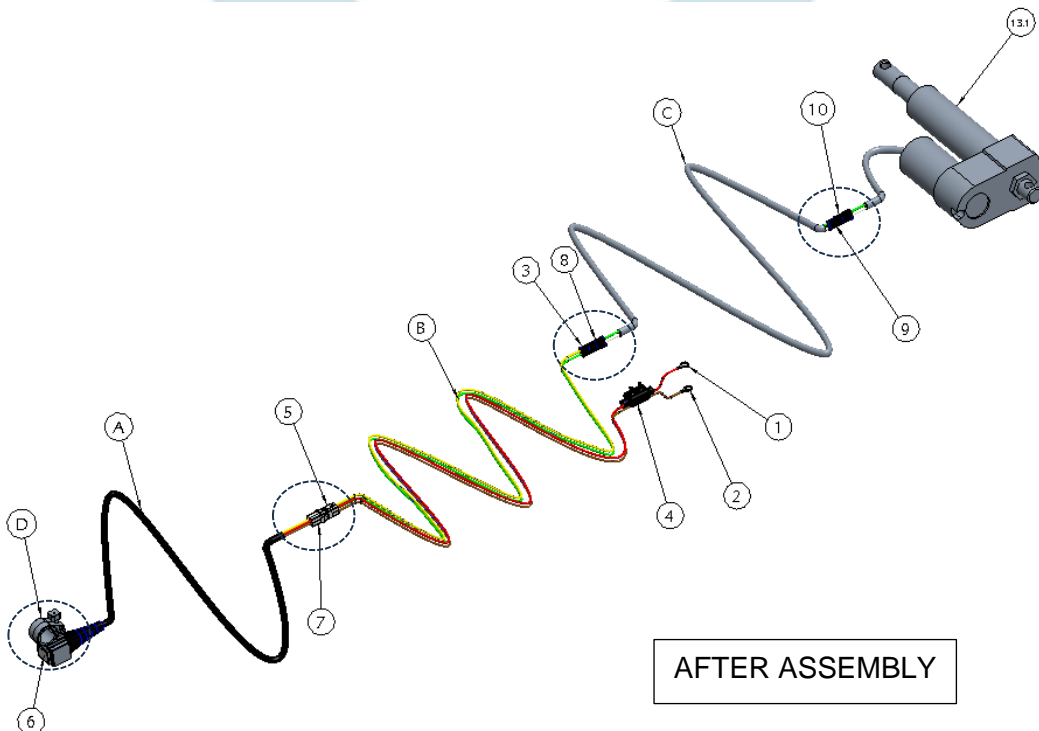
7. Actuator Cable also has two ends "8" and "9".
8. As mentioned above terminal "8" connects with the coupler of Battery cable i.e., Terminal "3".
9. Other end Terminal "9" connects with the Terminal "10" of the (#13.1) Electric linear Actuator.
10. Please ensure the Terminal "1" and "2" are connected to the correct ends of the battery by pressing the up and downside of the "6" Rocker switch, as shown in the image below. If the actuator movement is opposite to as shown in the image, then reverse the connection of the



"6" Rocker Switch with (-)up , (o)off and (=)down moment of actuator

terminal "1" and "2" with positive and negative ends of the battery.

11. Make sure to keep the wire away from any potential hot spots by the motor or the exhaust. Using zip ties (not included) you can "hide" a lot of the wire.
12. Your ATV 3-POINT HITCH Assembly should now be fully activated and ready for use.





## CONTACT DETAILS

Uniparts USA Ltd.  
1431, Marvin Griffin Road,  
Augusta, GA-30906, USA  
Phone: 1-706-868-2388  
Fax: 1-706-868-4168  
[technicalsupport@usa.unipartsgroup.com](mailto:technicalsupport@usa.unipartsgroup.com)

