



RPRD21CD003
12 Volt Cordless Drill User Manual



DC charger



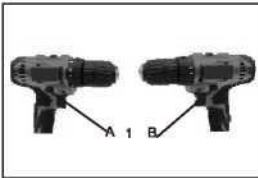
Battery voltage	12v
Battery type/ capacity	1 X 1,3Ah (Lithium)
Chuck Type	10mm keyless
Charging Time	3-5H
Speed	0-400/0-1500r/min
Torque Control	18+1



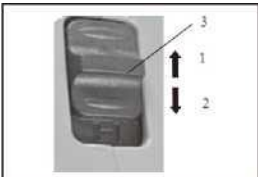
1. Battery Button
2. Battery Box



1. The Trigger Switch



1. Forward/Reverse Switch



1. Low speed
2. High speed
3. Gear lever



1. The torsion ring
2. The torque scale
3. The Pointer

The operation of the switch:

CAUTION: Before the battery box is inserted into the drill, please be sure to check whether the normal trigger switch is returned to the OFF position.

To start the electric drill, simply pull the trigger. Drill speed increases with increased trigger pressure. Release button to stop.

Reversing switch operation

This drill has a reverse switch to change the direction of rotation, the inversion switch lever is pushed to Side A for clockwise rotation, and Side B is for counterclockwise rotation. When the switch is in the middle position, it prevents the trigger switch from engaging.

Note: Before operation, be sure to confirm the direction of rotation.

The chuck of the drill must be completely stopped before changing the direction of rotation. If the drill has not stopped before changing the direction of rotation, it can lead to damage of the drill. When not using the drill, place the switch in the middle position of the forward/reverse switch.

Variable speed

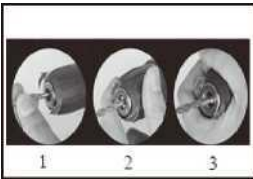
To change the speed, first turn off the electric drill, then change the gear lever switch. Moving the switch up to Number 1 is low speed and moving the switch down to Number 2 is high speed. Before use, put the gear lever in the correct position, and choose your correct speed.

CAUTION:

The drill must be in the correct position of the shift lever. Do NOT change the speed switch position while the drill is turned ON, as this may lead to damage to the gears.

Adjustment and tightening torque

The adjustment ring can be rotated between 19 settings. While fastening, you should align the marker setting with the pointer of the drill body. When aligned, the clutch is designed to lock. Before drilling, you can test a screw into sample materials to determine the correct torque needed. When the pointer is in the middle position, the adjustment ring is unable to lock.



1. Open the chuck
2. Clamping the chuck
3. Fixing the drill bit



Assembly, CAUTION:

When drill is not in use, you must turn off the tool and remove the battery box.

Mount or dismount the drill bit:

Hold the ring and rotate the sleeve counterclockwise to open the chuck. Then put the bit into the chuck and try to push it through. Hold the ring and rotate the sets of copper clockwise to the clamping chuck. When removing the drill bit, you should hold the ring and rotate the sleeve counterclockwise.

Charger:

Before using the electric drill, please make sure the battery is fully charged.

1. Insert the battery charging plug into an appropriate AC voltage power

CAUTION:

A battery charger is provided only with the original battery box. The charger must not be used for any other purpose other than to charge this specific battery.

supply. Charge indicator light will be RED.

2. When fully charged, the charge indicator light will be GREEN.

3. After charging, please pull the power plug from the AC voltage power supply.

When charging the battery which is new or has not been used for a long time it may lose power, please discharge the battery fully before recharging so that it can be properly charged.

If the battery is exposed to direct sunlight or is being used heavily and becomes hot, the charging indicator may light up yellow. When this happens, allow the battery to cool before charging or using. When charging, keep away from direct sunlight.

▲ CAUTION:

* Before you adjust or check the drill, you must turn off the power and remove the battery box.

To Install or remove battery box

You should switch off the power before inserting or removing the battery box.

If you want to remove the battery box, press the battery box button, and then pull it out.

If you want to insert the battery box, the battery box and the box groove reed should be slipped on in the proper position. Slide until it locks and be sure it is fully inserted. If it does not lock, it is possible that the battery will accidentally fall out, leading to a possible injury.

Do not forcefully insert the battery box, if the battery box is not easy to slip into, it is not in the correct position and you will have to reinsert the battery box.

Main safety tips

Warning: Please read all security matters. If you do not comply with all of the following security matters, it may lead to electric shock, fire and severe injuries.

1. **Keep work environment clean, and well lit.** It is easy to have accidents in a wet and dark workplace when using electric tools.
2. **Do NOT use near hazardous materials (such as combustible liquid, gas or where combustible dust exists).** Electric tools may cause sparks and can ignite the dust or gas.
3. **Do NOT operate power tools in the presence of children, bystanders, or visitors.** Distraction can cause the machine or you to be out of control.

Electrical Safety

4. **Plug and socket must be the same.** Do not modify the plug in any way and make sure the socket is the same as the plug to reduce the risk of electric shock.
5. **When working, avoid body contact to grounded materials.** For example: metal pipes, radiator, stoves, refrigerators and so on, if there is body contact to grounded materials, it will increase the risk of electric shock.
6. **Do NOT expose electric power tools to rain or wet conditions/environments.** Cannot be placed in moist environments, water entering the power tool may increase the risk of electric shock.
7. **Do NOT improperly use the wire, do not drag wire, or pull wire pulling out the plug, also do NOT let the wire touch thermal objects, sharp objects, moving parts or objects with grease.** If the wire is damaged or tangled it increases the risk of electric shock.
8. **If the tool is being used outside, you must use a special outdoor extension cord.** Using a special outdoor extension wire can reduce the risk of electric shock.

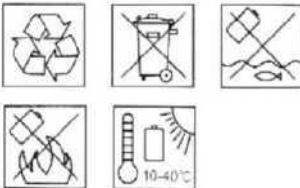
Personal security

9. **Do not operate while under the influence of any drugs or alcohol, concentrate on the work and tool when operating.** When you are fatigue or under the influence of drugs, alcohol or therapeutic treatment, you should not use tools as it is likely to cause serious injury.
10. **The use of safety equipment, the use of safety glasses.** The use of safety equipment can reduce personal injury, as well as a dust mask, safety shoes, safety helmets or hearing protection devices.
11. **Prevent accidental starting. Before putting the plug in the socket, you should check that the switch is off.**
12. **Pay attention to clothes. Do not wear loose clothing and accessories.** Move your hair, clothing, and gloves away from moving parts. Loose clothing, jewelry and hair are moving parts and may get caught while operating the tool.
16. **When adjusting or replacing an attachment BEFORE the tool is in use, be sure to unplug the power plug and / or the battery box.** These preventive safety measures can reduce the risk of accidentally starting the electric tool.
17. **Do NOT let children come in contact with electric tools, and do NOT let anyone who is unfamiliar with the drill manually operate it.** Any untrained personnel who operates this tool is at risk of injury.
18. **Maintenance of power tools. You should check removable pieces to see if they are aligned or jammed, if there is any damage to components, it may affect the normal operation of them.** If damaged, repair before use. Many accidents are caused by bad electric tool maintenance.

Additional safety rules of the 12 Volt Cordless Drill.

1. **When operating, the drill may touch concealed wiring or its own wire, so please hold on to the insulated surface of the handle tool.** Contact with exposed metal components may cause the operator to suffer an electric shock.
2. **Must stay standing while operating tool.** When using power tools on elevated surfaces, you should ensure that there is no one below you.
3. **Keep your hand far away from the rotating components.**
4. **Do NOT touch the drill bit or the end of the drill immediately at the end of the operation, as they may be very hot and can burn the skin.**
5. **Confirm that the switch is in the closed position before you insert the battery box.** If the switch is in an open position, it is prone to accidents.
6. **Only use the manufacturer specified charger.** The use of a mismatched charger for charging battery box may become a fire hazard.
7. **Electric tools can only be equipped with a specified battery box.** The use of a mismatched cartridge may cause injury or fire accident.

The important of safety battery box



Please collect battery box and deal with it as per the requirements of environmental regulations.

1. Please read all instructions and markers on the battery before use.
2. If the tool becomes unresponsive, you should stop operating immediately. Otherwise, it may lead to overheating, combustion, and explosion.
3. If the battery acid gets into your eyes, please rinse with clean water, and see a doctor immediately. This may lead to impaired vision.
4. Do NOT leave the battery in an environment where the temperature can reach or exceed 50 degrees Celsius (122 degrees F).
5. If the battery is seriously damaged or is not functioning, it should not be burned, because the battery charger will cause a fire explosion.
6. Pay attention to not dropping or striking the battery.

Tips to preserve battery life

If the tool is not working properly, you must stop the machine operation and charge the battery.

Don't have enough electricity to charge battery.

Excessive charging will shorten battery life.

If you have not used the battery for more than six months, it must be charged before use.

Important notes about the safety charger

1. Please do not use other rechargeable batteries, as other types of rechargeable batteries may cause an explosion, resulting in personal injury and damage.
2. Do not use to charge other rechargeable batteries.
3. The chargers, electric wire and plug must be examined before use. If there are any problems, discontinue use. Only a professional repair personnel can repair it and can only use original parts to replace the broken pieces.
4. Do not charge battery packs near flammable liquids and gases. Do not put the chargers on top of flammable items.
5. Do not allow the chargers to be exposed to rain and snow.
6. Do not alter the charger in any way.
7. After charging or any maintenance/cleaning, please pull power charger plugs from the power outlet. Please be sure to pull from the plug and not from the power line to unplug the power charger.
8. Please place the power line somewhere where it will not be trampled on or easily damaged or stretched.
9. Do not use a damaged power line or plug, you must replace immediately.
10. If the charger falls on the ground and is damaged, please do not use, as it should be given to qualified personnel to repair. Inappropriate use or assembly may be an electric shock or fire hazard.
11. When the temperature is below 10 degrees Celsius (50 degrees F) or above 40 degrees C(104 degrees F) do NOT charge the battery.

ONE-YEAR LIMITED WARRANTY

For product information, technical support and warranty information, please visit www.roadprobrands.com

DO NOT DISPOSE OF ELECTRICAL GOODS IN HOUSEHOLD WASTE

