



ADJUSTABLE 5 FT POLE SAW

OWNER'S MANUAL



WARNING:

Carefully read and understand all **ASSEMBLY AND OPERATION INSTRUCTIONS** before operating. Failure to follow the safety rules and other basic safety precautions may result in serious personal injury.

Model# TTP-025PS

Thank you very much for choosing this product! For future reference, please complete the owner's record below:

Model: TTP-025PS Purchase Date: _____

Save the receipt, the warranty, and these instructions. It is important that you read the entire manual to become familiar with this product before you begin using it.

This product is designed for certain applications only. The manufacturer cannot be responsible for issues arising from modification. We strongly recommend that this product not be modified and/or used for any application other than that for which it was designed. If you have any questions relative to a particular application, DO NOT use the product until you have first contacted us to determine if it can, or should, be performed on the product.

For technical questions, please call **1-218-943-6290**.


Pruning and trimming branches and logs


TECHNICAL SPECIFICATIONS

Item	Description
Length	Extends to 5' long Collapses to 18"
Weight	2.4lbs
Thickness of Saw blade	1.2mm
Blade Length	7"

GENERAL SAFETY RULES

 **WARNING:** Read and understand all instructions. Failure to follow all instructions listed below may result in serious injury.

 **CAUTION:** Do not allow persons to operate or assemble this Adjustable 5 ft Pole Saw until they have read this manual and have developed a thorough understanding of how the Adjustable 5 ft Pole Saw works.

 **WARNING:** The warnings, cautions, and instructions discussed in this instruction manual cannot cover all possible conditions or situations that could occur. It must be understood by the operator that common sense and caution are factors that cannot be built into this product, but must be supplied by the operator.

SAVE THESE INSTRUCTIONS

WORK AREA

- **Keep work area clean**, free of clutter, and well lit. Cluttered and dark work areas can cause accidents.
- **Keep children and bystanders** away while operating Adjustable 5 ft Pole Saw. Distractions can cause you to lose control, so visitors should remain at a safe distance from the work area.
- **Be alert of your surroundings.** Using Adjustable 5 ft Pole Saw in confined work areas may put you dangerously close to sharp tools and rotating parts.
- **Do not operate in poor lighting.**

PERSONAL SAFETY

- For Safe operation, read and understand all instructions before using this product. Follow all safety instructions. Failure to follow all safety instructions below, can result in serious personal injury.
- **Stay alert**, watch what you are doing, and use common sense when using a Adjustable 5 ft Pole Saw. Do not use Adjustable 5 ft Pole Saw while you are tired or under the influence of drugs, alcohol, or medication. A moment of inattention while operating Adjustable 5 ft Pole Saw may result in serious personal injury.
- **Dress properly**. Do not wear loose clothing, dangling objects, or jewelry. Keep your hair, clothing, and gloves away from moving parts. Loose clothes, jewelry, or long hair can be caught in moving parts.
- **Use safety apparel and equipment**. Use safety goggles or safety glasses with side shields that comply with current national standards or, when needed, a face shield. Use a dust mask if working in dusty work conditions. This applies to all persons in the work area. Also use non-skid, safety shoes, hard hats, gloves, dust collection systems, and hearing protection when appropriate.
- Inspect the unit before each use.
- Do not use the product for any job except that for which it is intended.
- Keep all bystanders, children, pets from the work area away.
- To protect yourself from falling branches, do not stand directly under the branch or limb being cut.
- Do not grasp the exposed cutting blades or cutting edges when picking up or hold the product.
- Be aware saw blade can become pinched under certain conditions.

Adjustable 5 ft Pole Saw USE AND CARE

- **Do not modify the Adjustable 5 ft Pole Saw in any way**. Unauthorized modification may impair the function and/or safety and could affect the life of the equipment. There are specific applications for which the Adjustable 5 ft Pole Saw was designed.
- **Always check for damaged or worn-out parts before using the Adjustable 5 ft Pole Saw**
Broken parts will affect the Pole Saw operation. Replace or repair damaged or worn parts immediately.
- **Store idle Hand Saw**. Store with the blade folded back inside the saw.
- Use Pole Saw for cutting wood only. Do not use for cutting non-wood items.

OPERATION



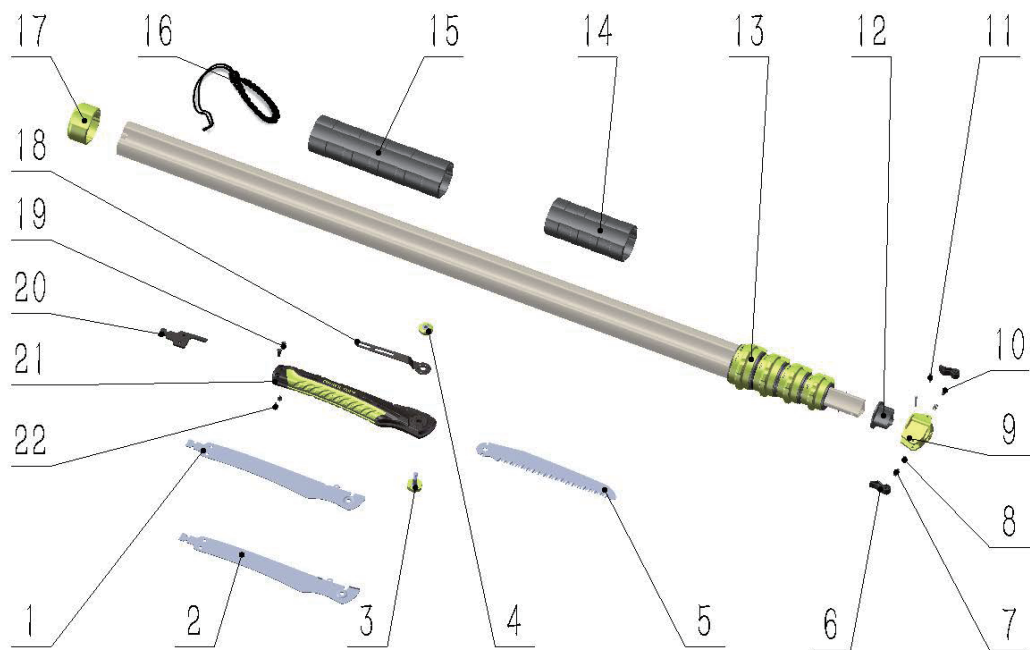
WARNING:

- **Keep hands away from cutting area. Keep both hands on handles when in use.**
- **Use 2 hands at all times.**

MAINTENANCE

- **Maintain your Adjustable 5 ft Pole Saw**. It is recommended that the general condition of any Pole Saw be examined before it is used. Keep your Pole Saw in good repair by adopting a program of conscientious repair and maintenance. If any abnormal vibrations or noise occurs, have the problem corrected before further use. Have necessary repairs made by qualified service personnel.

DIAGRAM & PARTS LIST



Part#	Description	Qty.	Part#	Description	Qty.
1	Saw blade guards 1	1	12	Spacer	1
2	Saw blade guards 2 (with edging)	1	13	Telescopic pole body	1
3	Pivot bolt (M6)	1	14	Rubber Sleeve 1 (120mm)	1
4	Pivot Nut (M6)	1	15	Rubber Sleeve 2 (200mm)	1
5	Saw blade	1	16	Lanyard	1
6	Knobs	2	17	End plug cover	1
7	Pin 1 (Ø4*10)	1	18	Clip	1
8	Spring	2	19	Lock Bolts 1 (M3)	2
9	Saw blade joint	1	20	Mounting tabs	1
10	Pin 1 (Ø4*12)	1	21	Handle	1
11	Pin 3 (Ø3*20)	2	22	Lock Bolts 2 (M3)	2

For replacement parts and technical questions, please call **1-218-943-6290**.

WARRANTY

One-year limited parts warranty.



BAC Industries
 PO BOX 155
 Miltona, MN 56354

Made in CHINA