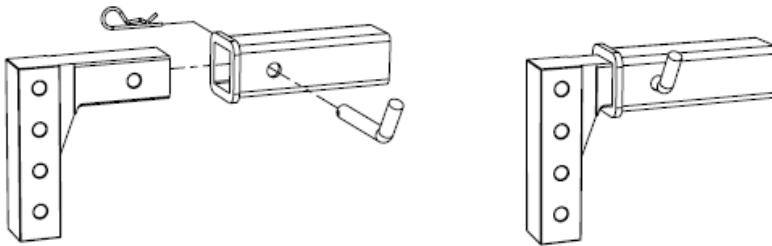


INSTALLATION GUIDE

ATTENTION:

- Be aware and follow all listed gross trailer weight and tongue weight ratings and do not exceed towing ratings before and during use or serious injury and damage to your trailer/vehicle could occur.
- The maximum weight resting on the trailer tongue should be no more 10% of ball rating (if the ball is rated at 7,500 lbs. the tongue weight should not exceed 750 lbs.)
- Ensure all hitch locks are securely fastened during installation before towing

Step 1: Install Aluminum Drop Section to Hitch Receiver with Hitch Pin. It can be inserted as a drop (as shown) or it can be reversed and used as a rise with no change in the towing weight ratings)



RATINGS AND TOWING CAPACITY

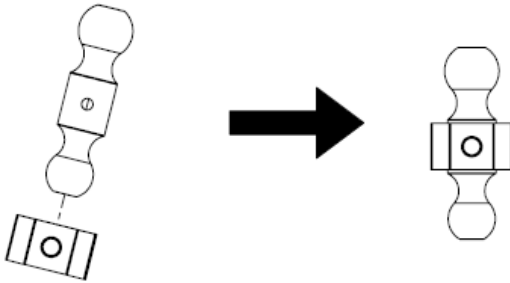
Max tongue weight: 750 lbs.

2" ball : 7,500 lb. GTWR

2-5/16" ball : 7,500 lb. GTWR

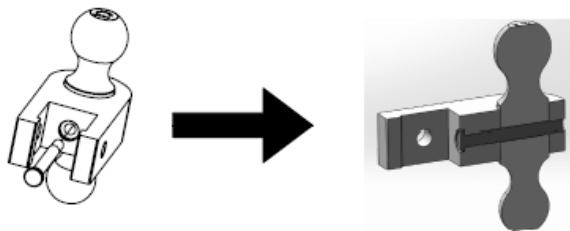
**Independently tested to meet or exceed
J684 towing standards**

Step 2: Install hitch ball(s) to adjustable section. See pin assembly below.



a. Align the hitch ball hole with the center of the bracket hole

b. Insert the hitch ball securing pin completely through the center of the balls that you will be using until they are flush to the end of the adjustable section.



Step 3: After installing hitch balls to adjustable section. Slide the adjustable section onto the aluminum drop at desired height and secure with the locking hitch pin. ALWAYS use both pins to secure adjustable section to the drop.

