

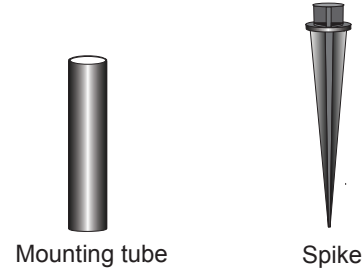
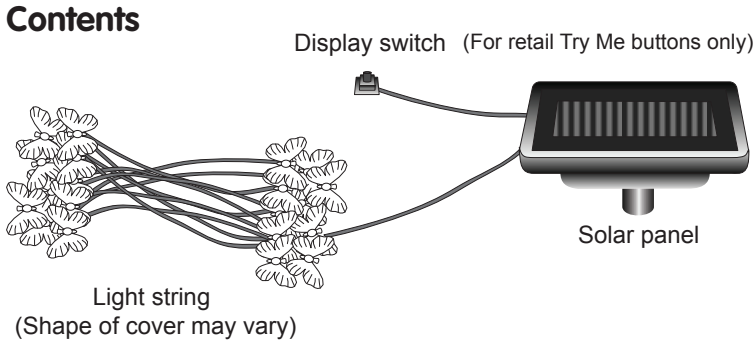
Solar String Lights



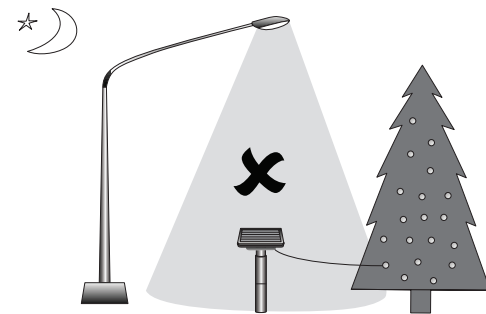
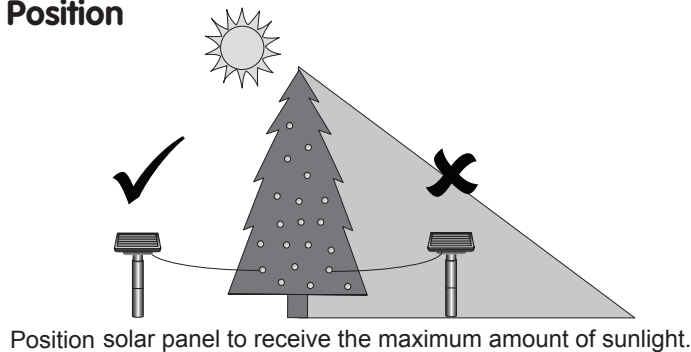
Introduction

Solar lights work by using electricity generated by the solar panel to charge internal batteries. These batteries are then used to power the light. When switched on the lights automatically illuminate at night by using a sensor. The duration of illumination will depend on the amount of sunlight and therefore charge received by the batteries.

Contents

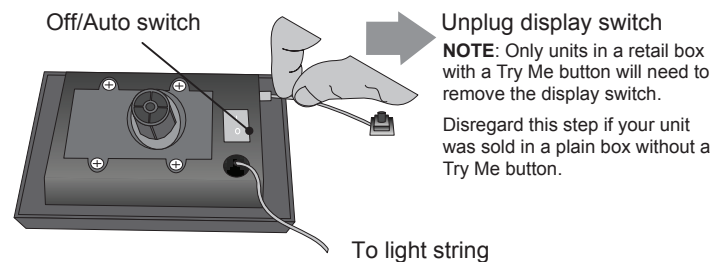


Position



First Use

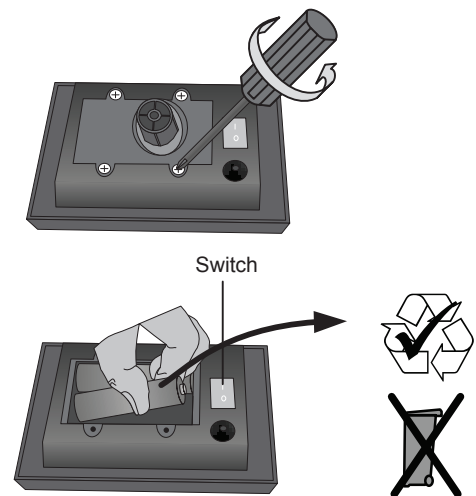
First unplug the display switch used for the "try me" packaging (see NOTE to right). Although there may be some charge left in the battery we recommend fully charging it before first use. Leave the switch in the off position for 2 sunny days to ensure the battery is fully charged. Once fully charged, switch to auto. The light will automatically illuminate when it gets dark. You can cover the solar panel to test that the light is operating.



Battery

Rechargeable batteries become less efficient with repeated charge-discharge cycles and the battery capacity reduces. If you find that the battery appears to be less efficient or does not run for long we suggest you first try to boost charge it. Switch off for 3 to 5 sunny days to allow the maximum charge to the battery. If after this boost charge your battery still does not perform to expectations you should replace it.

To change the battery, remove 4 screws and open the compartment as shown, remove the existing batteries and replace with a new ones. Only use 1.2V Ni-MH rechargeable batteries. Please ensure that the batteries are disposed of according to local regulations.



Customer Service

For immediate answers visit our website www.smartlivinghg.com where you will find troubleshooting and FAQs or contact us using the details below. One year limited manufacturer's warranty.

Telephone: +1 813 343 5775

Email: customerservice@smartlivinghg.com

Web: www.smartlivinghg.com



Smart Solar is a Smart Living Home & Garden brand.

Smart Living Home & Garden