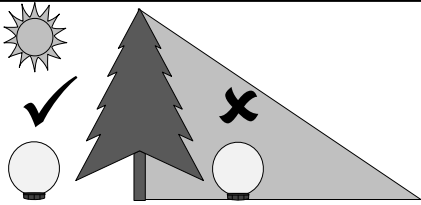
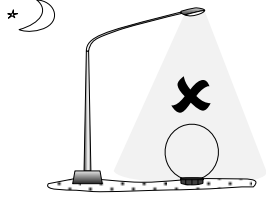


Position



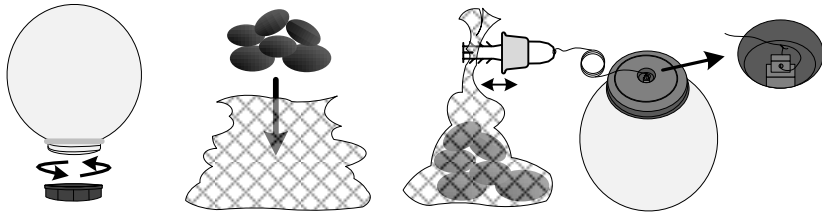
Position the light to receive the maximum amount of sunlight.



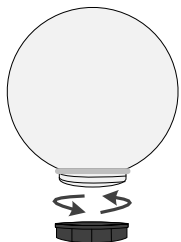
Do not position near bright light as this will prevent the light switching on at night.

Floating

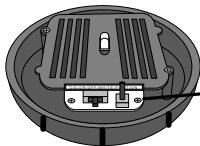
When used floating ensure that the base is screwed on straight and tightly to seal against the white sealing ring. Use the anchor kit to limit the movement of the globe whilst floating. Fill the sack with stones, tie the line to the globe then adjust the line length to suit.



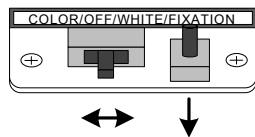
Operation



Unscrew base



Switch positions



COLOR/OFF/WHITE



Light does not come on but battery is charged

COLOR/OFF/WHITE



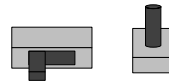
White light only

COLOR/OFF/WHITE



Light cycles through a range of colors

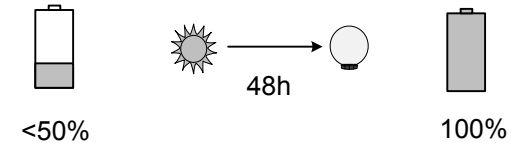
COLOR + FIXATION



Press to fix on the current color, press again to return to cycle

First use

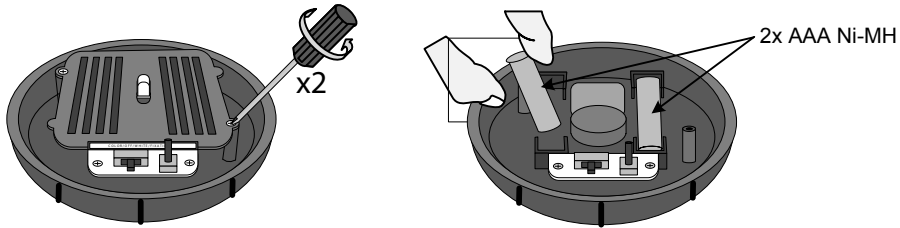
Whilst there may be some initial charge in the battery we recommend fully charging it before first use. Leave the switch in the off position for 2 sunny days to ensure the battery is fully charged. Once fully charged switch to the required position and your light will come on automatically at night.



Battery

Rechargeable batteries become less efficient with repeated charge-discharge cycles and the battery capacity reduces. If you find that the battery appears to be less efficient or does not run for long we first suggest you try to boost charge it. Leave in the off position for 3 to 5 sunny days to allow the maximum charge to the battery. If after this boost charge your battery still does not perform to expectations you should replace it. All our batteries are covered by a 1 year warranty.

Change Battery



Battery Disposal



Dispose of battery according to local regulations

Ni-MH 600mAh

Problem Solving

1. Check light is positioned correctly
2. Check the battery and boost charge as described
3. If problems persist contact customer services

1 Year Warranty

USA Email: customerservice@smartlivinghg.com Tel: +1 813 343 5775

Telephone: +1 813 343 5775 Email: customerservice@smartlivinghg.com Web: www.smartlivinghg.com

Smart Solar is a Smart Living Home & Garden brand.



Solar Magic Globe



Introduction

Solar Lights work by using electricity generated by the solar panel to charge internal batteries. These batteries are then used to power the light. When switched on the lights automatically illuminate at night by using a light sensor. The duration of illumination will depend on the amount of sunlight and therefore charge received by the batteries.

Contents

