



Bedbug Heater



Model No.: DR-122X4

Owner's Manual

PLEASE READ WARNINGS BEFORE USE
AND
SAVE THESE INSTRUCTIONS

Important Safety

Information

To reduce the risk of fire, electric shock, or personal injury, read all the instructions before using this heater. This appliance is intended for household or personal use only as described in this manual. Any other use including but not limited to commercial, agricultural, or outdoor use, is not recommended by the manufacturer. The use of components and accessories other than the ones provided in this package may produce dangerous results and will void the warranty.



This Bedbug Heater System requires a total of 50 Amps or 6,000 Watts to operate. Each heater needs to be plugged into a 120V outlet and each outlet needs to be on its own circuit. A typical residential and/or commercial building has one circuit per room. Do not use extension cords rated below 1500 watts or under 16 gauge.

Due to the size of the product, we recommend a minimum of 150 sq ft space for set up.

Warnings describe serious consequences resulting from misuse of this product.



Inspect outlet connection and contact strength before using these heaters.

WARNING!- Power Outlets Can Be Dangerous

Power outlets with poor electrical connections can become dangerously overheated and may result in fire, severe injury and/or damage to property.

Follow the steps below for safe use of ANY high-power appliances:

1. Inspect outlet connection and contact strength.
Insert a standard two prong plug (without third, ground connection) into outlet. Ensure that both prong connections offer equal and strong resistance when inserted. If the two-prong plug does not offer strong resistance or one prong feels easier to insert than the other, this outlet could be unsafe for high-power appliances. Have an electrician inspect and/or replace outlet before use.
2. Ensure that the outlet is no older than 15 years
3. Inspect outlet after each use.
4. If you are unsure about the quality of outlet, have an electrician inspect and/or replace the outlets.

Caution

High-power appliances require more electric current than most household items. Old and high-use outlets can have poor or loose connections. The high current required by this product, combined with a poor electrical connection can cause outlets to overheat and melt. It is important to make sure that any outlets used with this product have strong electrical contact.

Warning: Extension Cords

Some extension cords are not adequate to carry the load of current drawn by these heaters without becoming dangerously overheated. If an extension cord

must be used, do not use a cord set rated less than 1500 watts or 15 amps, and of a minimum size of 16 gauge. Use only an extension cord with the UL listed mark. Use of an inadequate extension cord may result in overheating of the extension cord or a risk of fire.

Warning: Old Electrical Wiring and Outlets

Each Bedbug heater unit draws about 12.5 amps of current (1500 Watts) and must be on its own dedicated circuits rated 15 amps or higher. Some old electrical wiring and outlets may not be capable of sustaining these loads. If you are unsure of the electrical wiring or outlets in your location, contact an electrician before operating these bedbug heaters. If electrical cord(s) appears deformed or becomes hot to the touch, unplug it immediately. Old or faulty electrical wiring may cause an electric shock, fire or damage to the heater.

Additional Warning!

- Read all instructions before using this heater.
- Use this heater only as described in this manual. Any other use not recommended by the manufacturer may cause fire, electric shock, or injury to person(s) or damage to property.
- Only assemble Bedbug Toaster™ according to instructions in this manual.
- Do not insert or allow foreign objects to enter any ventilation or exhaust opening as this may cause an electric shock, fire, or damage to the heater.
- To prevent a possible fire, do not block air intakes or exhaust openings in any manner. Do not use on soft surfaces, like a bed, where openings may become blocked. Use the heater on flat, dry surfaces only.
- This heater is designed for indoor use only.
- This heater is not intended for use in bathrooms, laundry areas, or similar indoor locations. Never locate the heater where it may fall into a bathtub or other vessel where water may be contained or stored.
- Do not block exhaust vent on folding box. This can cause damage to the heater.
- Do NOT use heater in areas where gasoline, paint, or flammable liquids are use or stored. Do not place flammable objects or aerosols inside the Bedbug Toaster™.
- Some items may be damaged during heat treatment. Use EXTREME

CAUTION when heat treating fragile items such as books, items made of wood, and other heat-sensitive items.

- Consult the manufacturer of items in question (such as electronics) for a maximum safe temperature before placing them in the Bedbug Toaster™. Always monitor the temperature to ensure that the temperature in the Bedbug Toaster™ never exceeds a safe level.
- This heater is hot when in use. To avoid burns, do not let bare skin touch hot outlet. Wait for items to cool after heat treatment.
- Extreme caution is necessary when heater is used by or near children or handicapped person(s).
- Do NOT leave heater unattended when in use.

Hints & Tips

BED BUGS

- Bed bugs are small, oval insects that live in dark spaces close to their food source and feed at night. They range in size from 1/4" to 3/8" long and are mahogany or red-brown in color.
- Bed bugs hide in all sorts of cracks and crevices including: mattresses, bed sheets, baseboards, electrical outlets, picture frames, and furniture. These pests feed on blood and their bites can leave itchy, bloody welts on the skin, potentially causing allergic reactions.
- Studies have found that bed bugs at **all life stages** die quickly at temperatures at or above **120°F**.
- The Dr. Infrared Heater Bedbug Heater kills bed bugs without harming the environment.
- Bed bug eggs are difficult to detect. It's important to **heat treat all items** that may have been infected with bed bugs even if no bed bugs are found.
- Bed bugs can survive for up to **18 months without feeding**. It is critical that all potentially infested items are heat treated or sealed and stored for 18 months.
- Raising the interior temperature above **120°F**, a thermal death point, normally eliminates a bed bug infestation.

THE Bedbug Heater

- Heat is an effective way to kill bed bugs, but the temperature must be at least 120°F in order for the heat treatment to be effective.

- Always turn the heater on **before placing potentially infested items inside the Bedbug Toaster™**.
- **Always** use indoors with a room **temperature above 70°F**. If the room temperature is below **70°F**, the Bedbug Heater may not reach optimal bed bug killing temperatures.
- Always **monitor the temperature** inside the Bedbug Toaster™ with a thermometer (thermometer included).
- Do not operate the Bedbug Heater on cold floors such as concrete or near areas with high humidity such as bathrooms or laundry areas. Always place the Bedbug Heater on surfaces at room temperature (above 70°F).
- Connect to properly grounded outlets only.
- To disconnect the heater, turn controls to OFF, then remove plug from outlet. **NEVER REMOVE PLUG FROM OUTLET WHEN HEATER IS IN USE.**
- Always unplug heater when not in use.
- Always plug heater directly into a wall outlet/receptacle. If an extension cord must be used, do not use a cord set rated less than 1500 watts or 15 amp, and of a minimum size of 16 gauge with UL listed mark.

Components Included

The following components are required for proper use of this product. Please contact Dr. Infrared Heater if you did not receive all of the components listed below. Some components may appear different from the illustrations below:

Thermometer & Timer

(Qty: 1)



Bedbug Toaster™

(Qty: 1)



Bedbug Heater

(Qty: 4)



Frame

(Qty: 1)



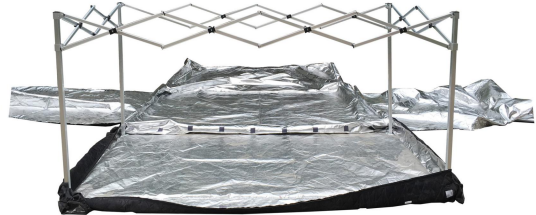
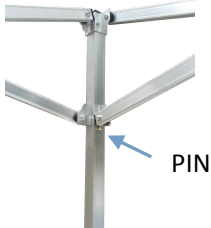
Installation instructions:

1. Open the Frame and Bedbug Toaster™ as shown below:



- Toaster with black side need to facing down
- Unzip all zippers and unfold all sides

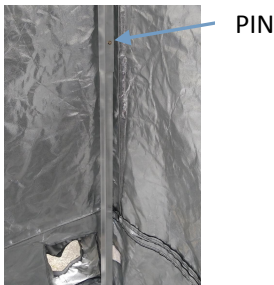
2. Extend all legs until locking brackets click into lock position. Then expand the frame as shown below. Make sure locking pins click into fixed position on all four legs.



3. Put the top of the Bedbug Toaster™ to cover the top frame as shown below:



4. Extend legs until locking brackets click into position as shown below:



5. Use zippers to close and open the Bedbug Toaster™:



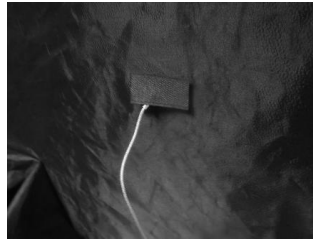
6. Install a new 1.5V AAA battery into thermometer.

7. Put the thermometer sensor into the Bedbug Toaster™ through the opening as indicated below. Connect the sensor wire to the thermometer. Hang the thermometer on the rear side of the Bedbug Toaster™ .

Step One:



Step Two:



Step Three:



Step Four:



8. Press °C / °F button on the back of the thermometer to switch between Celsius and Fahrenheit.

9. Set alarm temperature to 120°F by pressing the UP and DOWN button.



10. Turn the power knob on all 4 heaters to ON position. Place heater into the ventilation tube of the Bedbug Toaster™ and close the zipper. Make sure the heater stands firmly on the floor and hot air can flow into the Bedbug Toaster™ unobstructed.



Note: Always turn the heater on when placing potentially infested items inside the Bedbug Toaster™. Do not put items directly in front of the heater as it may block the airflow. To avoid overheating, do not put the heater all the way inside the Bedbug Toaster™. See above Exhibit.

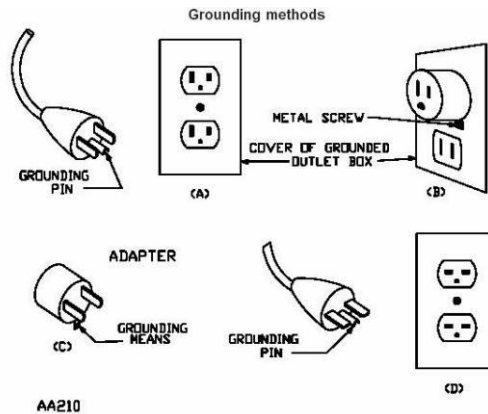
WARNING: YOU MUST ensure that items in the Bedbug Toaster are at least 12 inches from the heat outlet. Recommended clearance is 9 x 12 (in.) from the heat outlet.

11. Plug the power cord into a grounded wall outlet. (120VAC, 60Hz)

Important: This heater is for use on 120 volts and comes with a grounded (3 prong) plug. The grounded plug must be used with a grounded outlet. Do not use an adapter in a 2-slot wall outlet unless the ground plug of the adapter

properly connects to a building ground. Using heater without properly grounded outlet or adapter could result in an electric shock hazard.

The cord has a plug as shown in (A) in the image below. An adapter as shown in (C) is available for connecting three-prong grounding-type plugs to two-slot receptacles. The green grounding pin extending from the adapter must be connected to a permanent ground such as a properly grounded outlet box. The adapter should not be used if a three-slot grounded receptacle is available.



12. Setting the timer.

The thermometer alarm will beep when the temperature of the thermometer sensor reaches 120°F. Press the **ALERT** button to stop the beeping. Press the **HR** and **MIN** button to set the timer (1-2 hours). Press the **START/STOP** button to start the countdown timer.

Studies have found that bed bugs at all life stages die quickly at temperatures at or above 120°F. The higher the temperature, the less time it takes to kill them. Common practice for heat treating is to measure the temperature at one representative location. When the temperature at this location reaches 120°F and is held at 120°F (or above) for one hour, **you can be assured** that any bed bugs in your belongings are exterminated.

13. Remove items after heat treatment.

WARNING: Items will be hot after heat treatment. Wait for items to cool sufficiently before removing from the heater. Parts of the heater, such as the Bedbug Toaster's™ metal zippers can remain hot long after heat treatment and cause burns. Use **extreme caution**.

Heater Specifications

Model : DR-122X4

Voltage : 120V, 60Hz

Current : 50 amps (12.5x4)

Output : 20,800 BTUs (5200x4)

Max Power : 6,000 Watts (1500X4)

Turbo Fan : Multi-blade; Low noise 2600 RPM

Dr. Heater USA

860 Mahler Road

Burlingame, CA 94010

Tel: 1-800-317-1688

EMAIL: SERVICE@DRHEATERUSA.COM



Dr Heater USA



@DrHeaterUSA



Dr. Heater USA



Dr. Heater USA