

OTHER GREAT PRODUCTS FROM PITTMAN OUTDOORS
www.pittmanoutdoors.com



The Original
AirBedz[®]
LITE
Truck Bed Air Mattress



OWNER'S MANUAL

IT IS RECOMMENDED THAT YOU FAMILIARIZE YOURSELF WITH THE SETUP PROCESS OF THIS PRODUCT PRIOR TO YOUR FIRST CAMPING EXPERIENCE. THIS WILL HELP PREVENT ANY UNEXPECTED DIFFICULTIES AND OR SET-UP ISSUES WHILE ON YOUR TRIP.

PLEASE GO TO
WWW.TRUCKAIRBEDZ.COM
FOR PRODUCT WARRANTY REGISTRATION

IT IS HIGHLY RECOMMENDED THAT YOU READ
AND FOLLOW THE INFORMATION CONTAINED
IN THIS MANUAL BEFORE INITIAL SET UP.

WARNING:
DO NOT LEAVE INFLATED WHEN NOT IN USE.
OVER-INFLATION WILL OCCUR WHEN
EXPOSED TO DIRECT SUNLIGHT.

⚠ IMPORTANT ⚠

Before Using Your Airbed

- Inflate your airbed for several hours to allow the material to stretch naturally. The material will stretch the most after the first time you inflate it.
- As the material stretches, you may need to add more air for firmness. Your airbed is not leaking, it is the material stretching.
- Add air daily at first and less after a few days to maintain desired firmness.



@Pittman_Outdoors



@PittmanOutdoors



@PittmanOutdoors

WARNING: THIS PRODUCT IS NOT FLAME RESISTANT. THIS BED CONTAINS PLASTIC. DO NOT PLACE AIR BED NEAR OPEN FLAME OR OTHER SOURCE OF IGNITION.

WARNING: This is not a toy. To avoid risk of fire, burns, injury or shock, it should not be played with or placed where small children can reach it.

- Unplug pump when not in use.
- Pump is an electrical device. Do not use in or around water.
- Do not attempt to disassemble, repair, or service the pump. No serviceable parts are contained inside. Contact Pittman Products International at 650 South Jefferson Street, Suite D Placentia, California 92870 for service or repair.

WARNING:

- This is not a water toy or flotation device. Use as a bed only.
- Not recommended for use by children under three (3) years of age.
- This bed is not intended for infants or persons with limited mobility. They may roll off of the bed and become entrapped between the bed and the sides of the truck bed or walls and suffocate.
- Do not use this bed on abrasive surfaces or near pointed, sharp or protruding objects. Bed may puncture. Remove all sharp objects from area the bed will be used in.
- Do not step or jump on bed or use as a trampoline. Standing, jumping or walking on the bed may result in injury and/or damage or puncture the bed.
- Make sure truck bed is clean of any debris, sharp objects or protrusions or place bed in a safe area before use making sure that there are no sharp edges, steps, drops, or breakable items nearby. Use on flat surfaces only. Bed may tip over on uneven surfaces.
- Do not inflate or use mattress while vehicle is in motion.

CONTENTS

1. AirBedz® Lite air mattress
2. AirBedz® Portable 12 Volt pump with 16' DC charger cord
3. Carrying bag
4. Repair patch kit includes glue

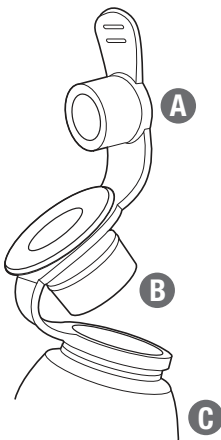
SET UP GUIDE

Your AirBedz Lite Mattress has a Two Stage Valve for easy inflation and deflation. This Valve is constructed in three parts:

- A. Valve Cap
- B. Middle Valve
- C. Bladder Valve

To Inflate:

Make sure middle valve (B) is inserted into bladder valve (C) securely.



OTHER GREAT PRODUCTS FROM PITTMAN OUTDOORS
www.pittmanoutdoors.com



River Drifter 2

- Built-in ice chest
- 2 Cup/drink holders
- Built-in back rests
- Grab rope
- Mesh bottom
- 2 Heavy-duty handles

River Drifter 1

- 2 Cup/drink holders
- Built-in back rest
- Grab rope
- Mesh bottom
- 2 Heavy-duty handles



Cool Drifter

- Can be used as a stand alone ice cooler or with traditional coolers up to 48 Qts.
- 4 Cup/drink holders
- Grab rope
- Heavy-duty handle



Splash Pong X

- 4 Person inflatable water pong table
- Glow in the dark cup holders



Splash Pong

- 2 Person inflatable water pong table
- Glow in the dark cup holders
- Contains LED lights around edge of table

OTHER GREAT PRODUCTS FROM PITTMAN OUTDOORS
www.pittmanoutdoors.com



**Pittman Indoor/Outdoor
20" Extreme Fabric Mattress**

- Heavy-Duty fabric construction makes it perfect for outdoor and indoor applications
- Built-in electrical air pump for easy inflation and deflation of your mattress
- Comfort coil system evenly distributes weight across a 20" thick mattress, providing a better night's sleep and bed like comfort when away from home
- Oversized carrying bag included for easy storage and transportation

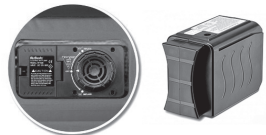
Also Available in



**Pittman Indoor/Outdoor
16" Extreme Fabric Mattress**

- Heavy-Duty fabric construction makes it perfect for outdoor and indoor applications
- Built-in rechargeable battery air pump includes detachable battery for easy inflates and includes a deflate feature
- Comfort coil system evenly distributes weight across a 16" thick mattress, providing a better night's sleep and bed like comfort when away from home
- Oversized carrying bag included for easy storage and transportation

Also Available in



Pittman 20" & 16" PVC Home Mattresses

- High grade PVC construction
- Flocked top with comfort coil system evenly distributes weight across the mattress, providing a better night's sleep



PPI-QCDH2



PPI-QDHPAC



SET UP GUIDE (cont.)

INFLATION

1. Place your bed in the back of truck bed or on a flat surface free of debris, obstructions and sharp objects.
2. Spread the mattress out so that it can fill easily. Allowing the mattress to "unfold" itself may place an unnecessary strain on the mattress and the pump.
3. Plug the AirBedz® portable pump into your vehicles cigarette lighter or accessory power jack.
4. Locate proper pump adapter fitting and insert into middle valve **(B)**.



Two Stage Valve

5. Turn pump on and inflate to desired firmness.
To increase pump pressure and to decrease inflate time, please ensure your vehicle's engine is turned on. This will allow the pump to operate at maximum voltage (14.4V vs 12V).
6. Remove pump and push valve cap **(A)** into middle valve **(B)** firmly.
7. Unplug pump when not in use.

** For faster inflates, you may insert pump directly into bladder valve (C) until the mattress is about 90% full. Then insert middle valve (B) into bladder valve (C) and continue to fill until desired firmness is reached.*

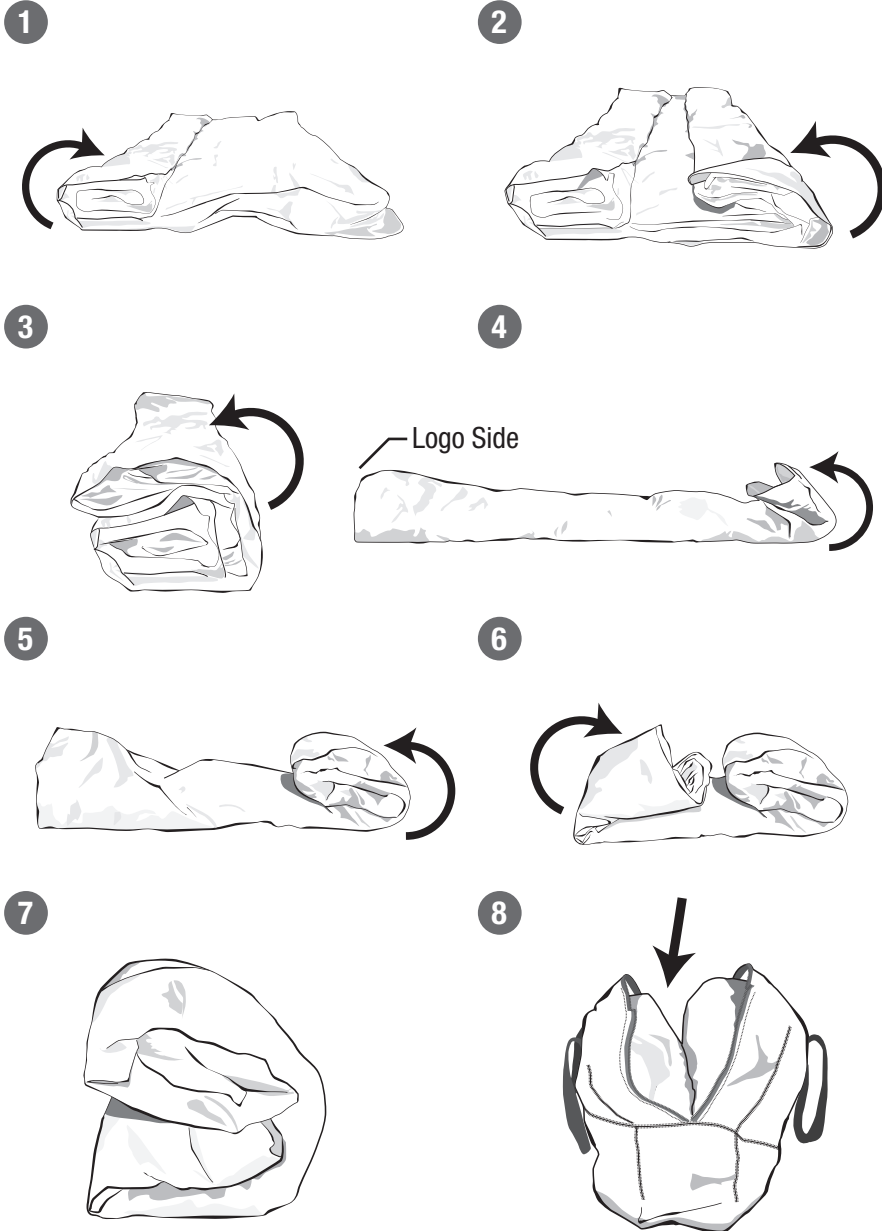
DEFLATION

NOTE: DEFLATE AIR MATTRESS SLIGHTLY BEFORE REMOVING FROM TRUCK BED TO AVOID SNAGGING OR TEARING MATTRESS ON TRUCK BED. IT IS BETTER TO FULLY DEFLATE MATTRESS IN PLACE TO AVOID DAMAGE.

1. Pull middle valve **(B)** from bladder valve **(C)**.
2. Fold bed according to Folding Instructions below and place into carrying bag and store until next use.

FOLDING INSTRUCTIONS

Upon complete deflation, lay bed on flat surface with sleeping surface facing upwards and fold according to the steps below.

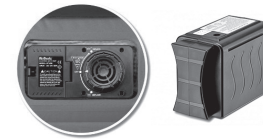


*actual bag may vary

OTHER GREAT PRODUCTS FROM PITTMAN OUTDOORS www.pittmanoutdoors.com

AirBedz XUV

- Built-in pump with detachable rechargeable battery provides easy inflates and includes a deflate feature
- Comfort coil system evenly distributes weight across a 10" thick mattress, providing a better night's sleep
- Heavy Duty cloth construction
- Secondary inflate/deflate valve for use with optional pump
- Includes carrying bag and A.C. charger
- Ideal for Outdoor Overlander Camping



Also Available in



Pittman Backseat Mattress

- PPI-TRKMAT fits Full Trucks and SUV's
- PPI-CARMAT fits Midsize Trucks, Cars, SUV's and Jeeps
- Inflates in under 2 minutes with the included D.C. portable pump with 5 ft. cord
- Includes one inflatable pillow
- Heavy Duty cloth construction
- A comfortable night's sleep is just an inflate away



Also Available in



OTHER GREAT PRODUCTS FROM PITTMAN OUTDOORS

www.pittmanoutdoors.com



AirBedz

- Built-in pump with detachable rechargeable battery provides easy inflates and includes a deflate feature
- Wheel well cutouts allows the mattress to fit around and over the wheel wells, creating a sleep area that utilizes the entire truck bed
- Comfort coil system evenly distributes weight across a 12" thick mattress, providing a better night's sleep
- Heavy Duty cloth construction
- Secondary inflate/deflate valve for use with optional pump
- Great for indoor use with "optional" Wheel Well Inserts
- Includes carrying bag and A.C. charger

Also Available in



AirBedz Pro3

- Wheel well cutouts allows the mattress to fit around and over the wheel wells, creating a sleep area that utilizes the entire truck bed
- Comfort coil system evenly distributes weight across a 12" thick mattress, providing a better night's sleep
- Professional grade fabric construction
- Great for indoor use with "optional" Wheel Well Inserts



AirBedz Lite

- Includes portable D.C. air pump with 16 ft. charger cord
- Wheel well cutouts allows the mattress to fit around and over the wheel wells, creating a sleep area that utilizes the entire truck bed
- Flocked top with comfort coil system evenly distributes weight across a 12" thick mattress, providing a better night's sleep
- High grade PVC construction
- Inflate/deflate valve for use with included D.C. pump
- Great for indoor use with "optional" Wheel Well Inserts

CARE AND MAINTENANCE

1. Inspect your bed before each use.
2. Keep your bed away from any sharp or protruding objects. Large cuts, tears or snags may not be repairable and will not be covered by your warranty.
3. A repair patch kit has been included in case of incidental damage to your bed. Please follow repair instructions carefully.
4. When not in use store bed in a clean, dry place out of extreme temperatures.

CLEANING

DO NOT SUBMERGE MATTRESS IN WATER! For spot cleaning, use a clean damp cloth to wipe the surface of the mattress. Apply a clear liquid dish detergent without dye if necessary. Wet stained area thoroughly; gently massage stained area with detergent. Blot the area to remove staining substance. Rinse thoroughly and blot dry. Allow your bed to air dry completely after cleaning and before storing.

ADDITIONAL INFORMATION

IN CASE OF AIR LEAKAGE

Please check the following if there is an air leak.

1. Make sure valves are tightened to ensure leakage is not from loose valves.

A repair patch kit has been included for minor repairs. This patch kit includes everything needed to make a repair.

REPAIRING AN AIR LEAK

1. Wipe bed with mild soap water over area to find possible air leak.
DO NOT SUBMERGE MATTRESS IN WATER! If there is a leak bubbles will form around leakage area.
2. Follow cleaning instructions for leak area.
3. Use included patch kit to cut a suitable sized patch for leak. Make sure to round the edges of repair patch to avoid peeling.
4. Apply glue to patch area and around leakage area.
5. Press patch firmly over the puncture area.
6. Wait 24 hours before inflating.

To prevent patch from peeling while drying....

It is recommended to tape down patch edges with a light adhesive tape.

WARRANTY DISCLAIMER

AirBedz® Original Truck Bed Air Mattresses are warranted against defects in material and workmanship for a period of one year from the date of purchase. Problems covered by the warranty include failure of the pump, seams or the valve. Punctures or wear to the mattress due to use or abuse are not covered. It is normal for an airbed that has been inflated for extended periods to require the addition of air after a few days. Air will be lost from the mattress through the material over time. Also, cooling of the air around the bed will cause the air inside the bed to contract, and the bed will be softer and may need refilling. To receive a replacement air mattress under Pittman Products International's One-Year Warranty, you will need to:

- All returns must have a Returned Goods Authorization number (RGA). Every package must be clearly marked with the RGA number. RGA numbers are good for 30 days from the date of issuance. Products returned without viewable RGA numbers will be refused. No returns on special order, clearance or discounted items. Returned products is subject to a 20% Re-Box/Restocking fee. Products must be properly packed to prevent shipping damage. All returned product must be shipped pre-paid. The cost of transporting the product to Pittman Outdoors for warranty service/replacement is the responsibility of the purchaser.
- Send entire product to Pittman Products International with a letter stating:
 - The nature of the problem with the bed and the model number.
 - Your name, return shipping address and a daytime phone number.
- Send us a copy of the original sales receipt.
- This warranty is valid for the original retail purchaser from the date of the initial retail purchase and is not transferable.

The purchase date on the receipt must be within One Year of the date you ship the bed to us. Please ship the bed, letter and copy of receipt via courier (e.g. UPS, FedEx Ground) or Insured Post to:

Pittman Products International
Attn: Returns
650 South Jefferson Street, Suite D
Placentia, California 92870

Pittman Products International is not responsible for returned shipments lost in transit. You are encouraged to use a shipment system that offers you a tracking number. Please allow 6 to 8 weeks for replacement. Customer is responsible for all return shipping costs.



EXCEPT FOR THE EXPRESS LIMITED WARRANTY SET FORTH ABOVE, PITTMAN PRODUCTS INTERNATIONAL MAKES NO EXPRESS OR IMPLIED WARRANTIES IN THIS AGREEMENT OR OTHERWISE. TO THE FULLEST EXTENT PERMITTED BY LAW, PITTMAN PRODUCTS INTERNATIONAL DISCLAIMS ALL WARRANTIES, WRITTEN, EXPRESSED OR IMPLIED, INCLUDING ALL WARRANTIES OF MERCHANTABILITY AND/OR FITNESS FOR A PARTICULAR PURPOSE. PITTMAN PRODUCTS INTERNATIONAL EXPRESSLY DISCLAIMS ANY AND ALL LIABILITY TO PURCHASER FOR ANY CONSEQUENTIAL DAMAGES, DAMAGES FOR LOSS OF USE, LOSS OF PROFITS, PROPERTY DAMAGE, OR ANY OTHER INCIDENTAL, CONSEQUENTIAL OR SPECIAL DAMAGES ARISING OUT OF THIS AGREEMENT OR THEIR OPERATION, FUNCTION OR CHARACTERISTICS OF THE PRODUCTS PURCHASED HEREUNDER. IT IS EXPRESSLY UNDERSTOOD THAT THE LIMITED WARRANTY SET FORTH ABOVE IS THE SOLE AND EXCLUSIVE REMEDY OF PURCHASER. NOT WITHSTANDING THE TERMS OF ANY LIMITED WARRANTY, AND/OR IN THE EVENT ANY LIMITED WARRANTY PROVIDED TO THE PURCHASER FAILS OF ITS ESSENTIAL PURPOSE, IN NO EVENT WILL PITTMAN PRODUCTS INTERNATIONAL ENTIRE LIABILITY TO PURCHASE EXCEED THE PURCHASE PRICE ACTUALLY PAID BY PURCHASER FOR THE PRODUCTS HEREUNDER, OR ANY DEFECTIVE PORTION THEREOF, WHICHEVER IS THE LESSER AMOUNT.

Pittman Products International neither assumes nor authorizes any representative or other person to assume any obligation or liability other than those expressly set forth herein.

YOUR RIGHT UNDER STATE LAW: This warranty gives you specific rights and you may also have other rights, which vary from state to state.

© 2020 Pittman Products International
All rights reserved.

Made in China.

Manufactured pursuant and/or licensed under pending patent applications and one or more of the following United States patents and/or foreign counterparts thereof:

5,966,755 8,234,349 8,468,624 D597,778 D609,520 D593,349.

China Patent No. ZL20109000106

Canadian patent 2,765,309

Australia patent 2010258650

Additional U.S. and foreign patents pending.

Our Customer Service Department is available Monday - Friday, 9 AM to 4 PM Pacific Standard Time, to answer any questions you may have about your new AirBedz® product please call us toll free at 1 (800) 981-2339. U.S.A. or 1 (657) 275-9100 outside U.S.A.

650 South Jefferson Street, Suite D
Placentia, California 92870
1 (800) 981-2339
www.truckairbedz.com



WARNING: Cancer and Reproductive Harm-
www.p65Warnings.ca.gov