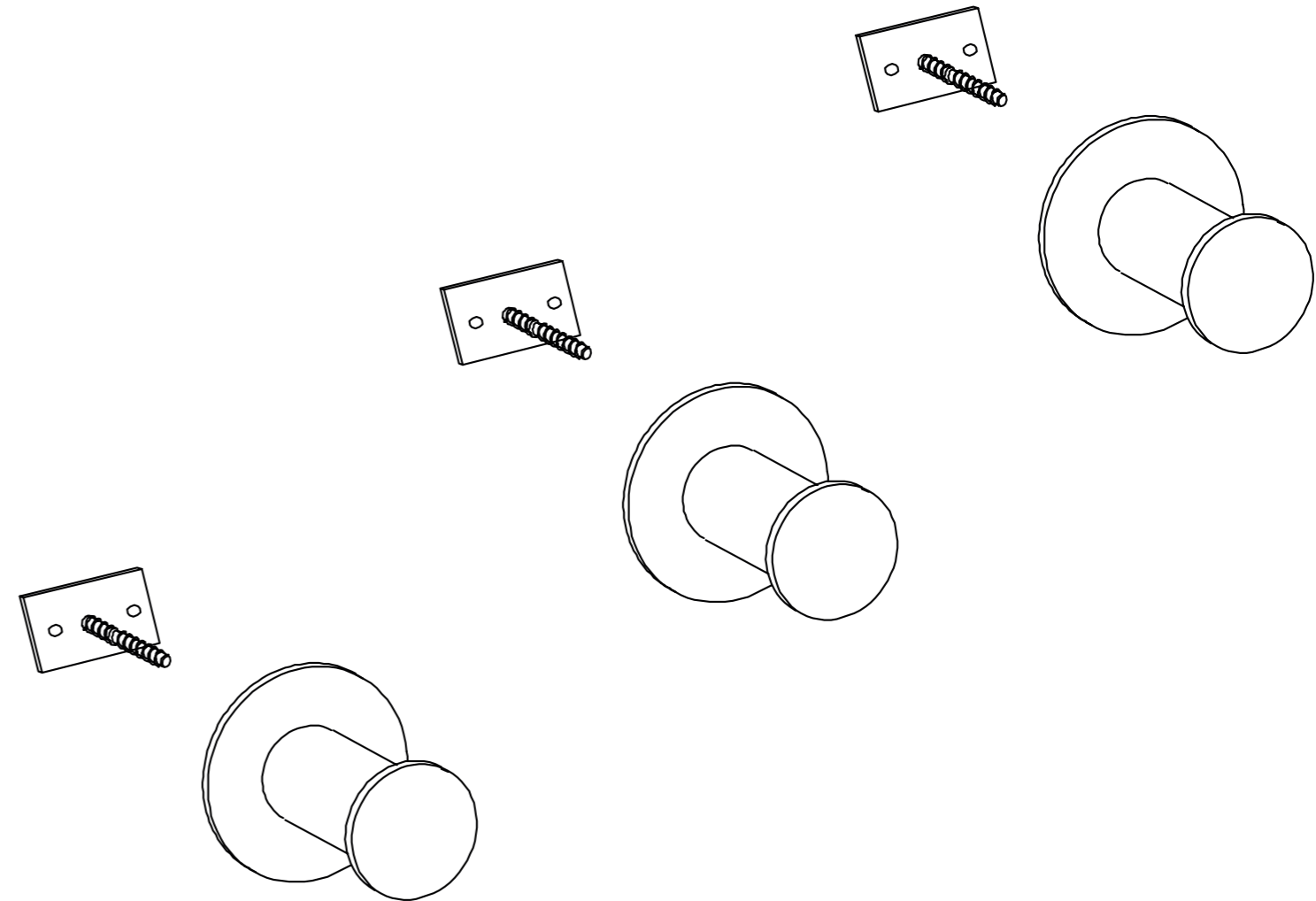
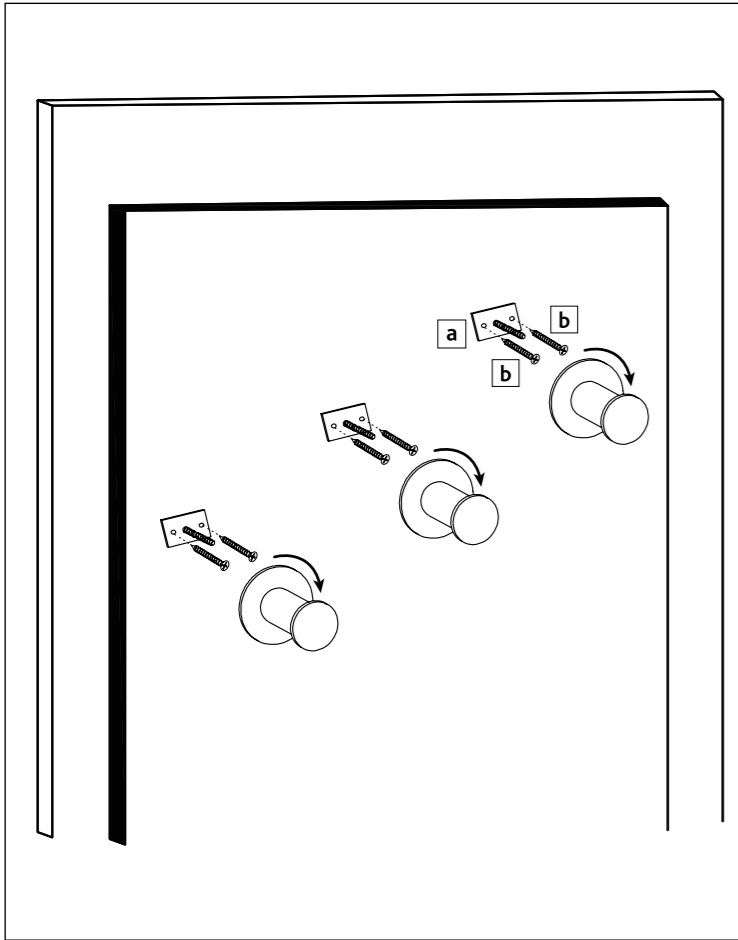


Item No.		Measurement in in./cm	Color
49893	Wall set 3, 3 steps	3 x DIAM 7.1 x 8.7 in. 3 x ø 18 x 22 cm	natural/white
49962			white/gray

Description	Measurement in in./mm	Quantity	Item No.	
			49893	49962
Climbing step	DIAM 7.1 x 8.7 in. ø 180 x 220 mm	3	49893-10	01-49945
Hardware set		1	49891-60	

Pos. No.	Description	Measurement in in./mm	Quantity
Pos. a	Metal holder		3
Pos. b	Wood screw (for wooden wall or wooden stud)	DIAM 0.2 x 1.9 in. ø 5 x 48 mm	6
Pos. c	Screw for stone wall	DIAM 0.25 x 2.2 in. ø 6,3 x 55 mm	6
Pos. d	Stone wall anchor, plastic	DIAM 0.25 x 2.2 in. ø 6,3 x 55 mm	6
Pos. e	Metal screw (for metal stud)	DIAM 0.15 x 1.5 in. ø 4 x 37 mm	6
Pos. f	Dry wall screw	DIAM 0.15 x 1.1 in. ø 4 x 28 mm	6
Pos. g	Dry wall anchor, metal	DIAM 0.5 x 1.3 in. ø 13 x 32 mm	6
Pos. h	Washer	DIAM 0.4 in. ø 10 mm	6





EN Work steps for wooden wall

First step

Please use a pencil. Bring the metal holder in final position and mark the screw-points in desired location. Use a spirit level or have someone eyeball to make sure the holes are levelled.

Second step

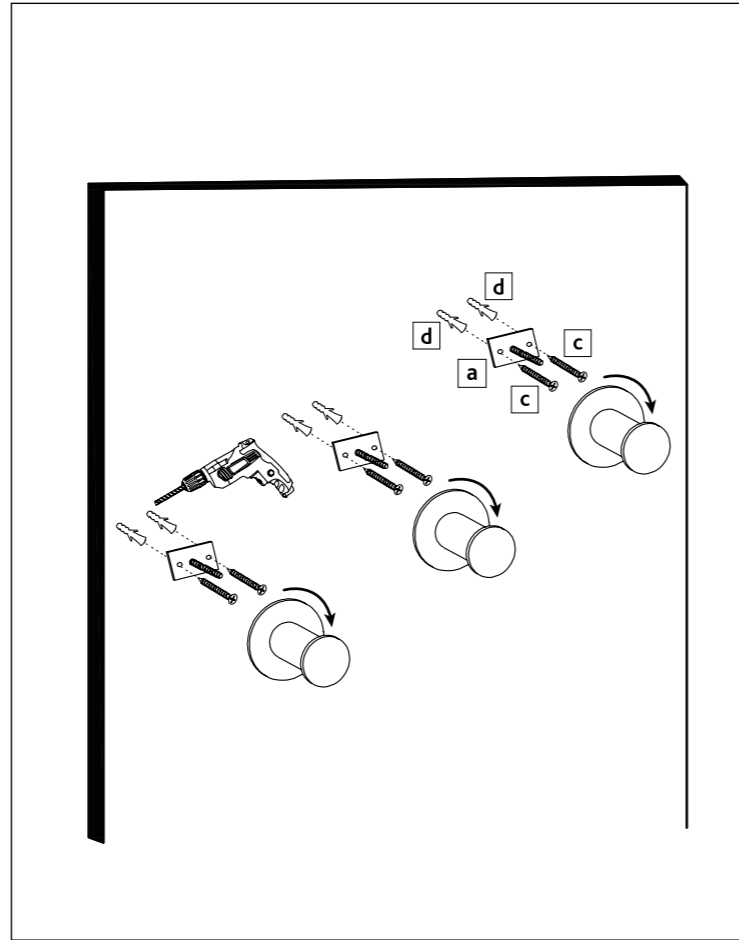
Mount the metal holder with attached screws to wooden wall at pilot markings.

Final step

Connect the steps to the metal holder and attach cap.

Advice:

Please note the secure assembly and mounting requires one adult person.



EN Work steps for stone wall or plaster wall with anchors

First step

Bring the metal holder in final position and mark the screw-points in desired location. Use a spirit level or have someone eyeball to make sure the holes are levelled.

Second Step

Drill 1/4" holes at pilot marking, be sure to keep the drill level. Make sure hole depth matches wall anchor length. Insert 1/4" wall anchors into drilled holes (some anchors might require a hammer).

Third step

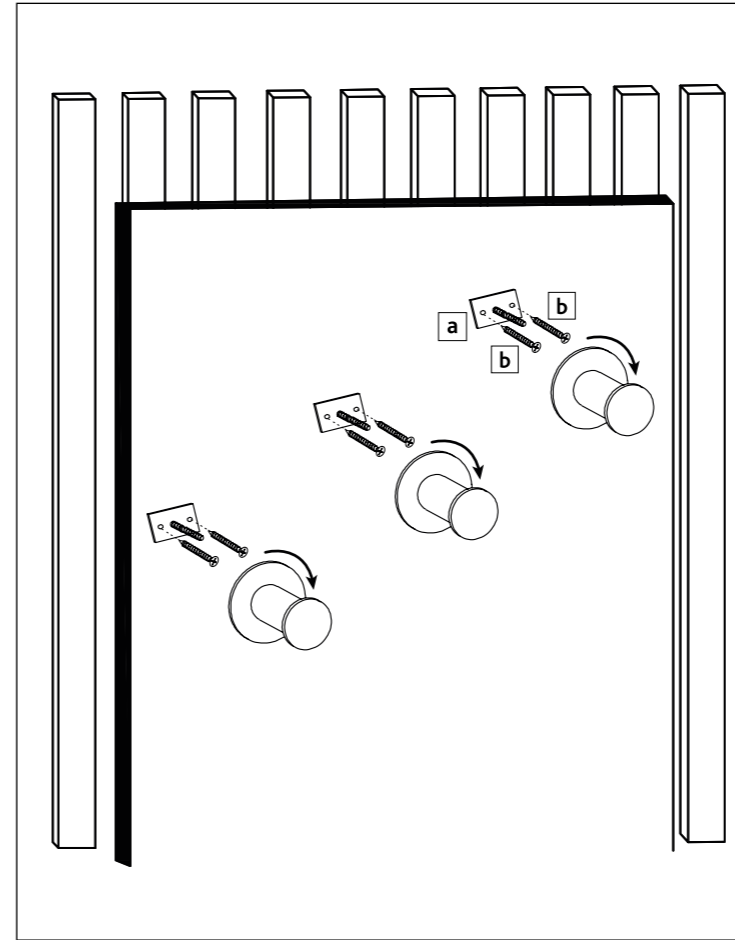
Mount the metal holder with attached screws and matching wall anchors to the wall.

Final step

Connect the steps to the metal holder and attach cap.

Advice:

Please note the secure assembly and mounting requires one adult person.



EN Work steps for drywall with wooden drywall stud or metal stud

First step

Use a stud-finder or other technique to locate the studs. Please use a pencil. Bring the metal holder in final position and mark the screw-point on the center of the stud. Use a spirit level or have someone eyeball to make sure the holes are levelled.

Second step

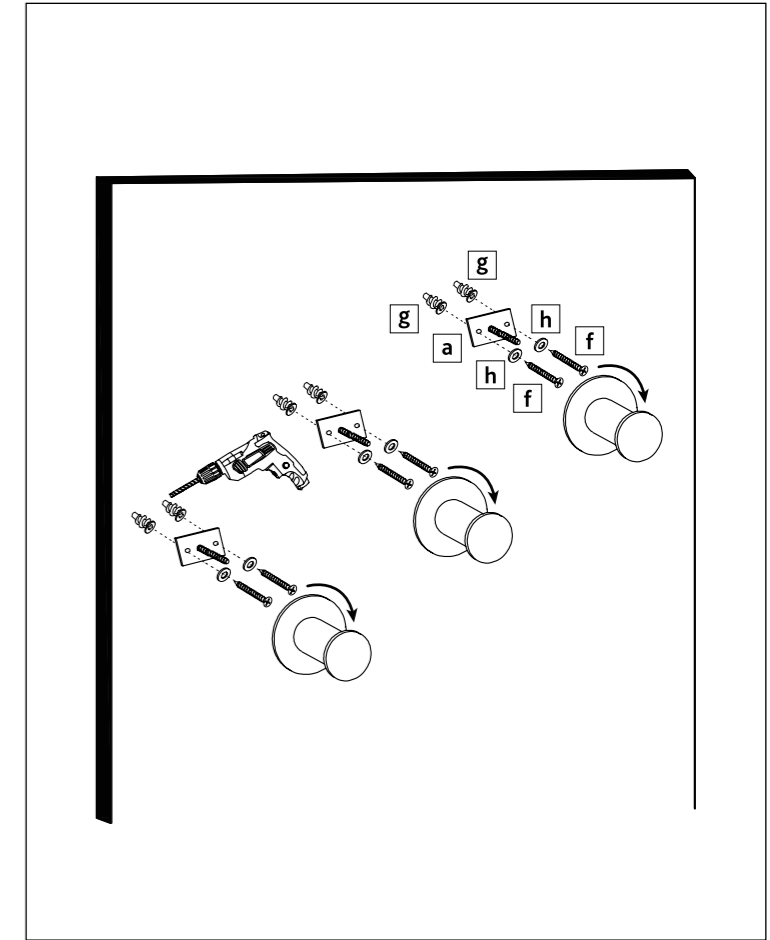
Before you start, make sure to check whether you have wooden or metal studs to select the correct screws. For wooden stud: Mount the metal holder with attached screws to wooden studs at pilot markings. For metal stud: Mount the metal holder with attached washers and screws to metal studs at pilot markings.

Final step

Connect the steps to the metal holder and attach cap.

Advice:

Please note the secure assembly and mounting requires one adult person.



EN Work steps for drywall - Drywall connection with drywall anchor

First step

Please use a pencil. Bring the metal holder in final position and mark the screw-point on the center of the wall. Use a spirit level or have someone eyeball to make sure the holes are levelled.

Second step

If you use self-drilling wall anchors a pilot hole is not needed. Use your drill and the 3/16" bit to make pilot holes for maximum 1 inch to markings. Insert wall anchors for dry walls. Be careful not to break the drywall panel.

Third step

Mount the metal holder with screws to the wall anchor make sure the screws are fastened securely.

Final step

Connect the steps to the metal holder and attach cap.

Advice:

Please note the secure assembly and mounting requires one adult person.