

Warning:

- 1-Ride-on car is designed for children up 12-36 months old. Ride's weight must not exceed 25kgs. as there is insufficient strength to support overweight.
- 2-Product is designed to seat 1 child as a time to avoid injuries.
- 3-Parental guidance and supervision are strongly advised to ensure safe riding.
- 4-Adult assembly and installation of all parts are required to ensure safety.
- 5-Batteries to be handled by adults.
- 6-Take care of riding and avoid going near streets,crossroads,all traffic areas,swimming pools,and stairs.
- 7-Without regular check of the product.it will cause overturn or fall
- 8-Check to see occasionally that the nut and bolt on the steering wheel is tight and secure.
- 9-Dangers may present if the product is not correctly assembled.
- 10-Shoes must be worn in use.

Battery Handling:

- 1-Battery must be handled by adults only.
- 2-Always remove exhausted batteries.
- 3-Use AA size batteries only.
- 4-Alkaline batteries are recommended.
- 5-Always remove batteries when the unit is not going to be used for an extended period of time.
- 6-When replacing new batteries,always replace all batteries.
- 7-Do not mix old and new batteries.
- 8-Do not mix Alkaline,Standard(Carbon-Zinc),or Rechargeable(Nickel-Cadmium)batteries.
- 9-Do not dispose of batteries in fire,batteries may explode or leak.
- 10-Non-rechargeable batteries are not to be recharged
- 11-Rechargeable batteries are to be removed from the toy before being charged
- 12-Rechargeable batteries are only to be charged under adult supervision
- 13-Batteries are to be inserted with the correct polarity
- 14-The supply terminals are not to be short-circuited

Item No: 639-P



12-36 months

Activity Ride-On

Instructions Manual

WARNING
ADULT ASSEMBLY
REQUEST.

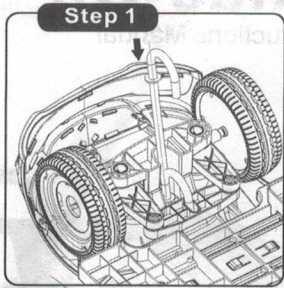


“Mercedes-Benz”   and the design of enclosed product are subject to intellectual property protection owned by Daimler AG.They are used by Ningbo Prince Toys Co.,Ltd. under license.

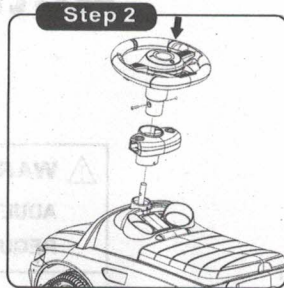
COMPONENTS LIST

1.Body x1 	2.Steering wheel x1 	3.Backrest x1 
4.Safety bar x1 	5.Safety bar fixed part x1 	6.Thumb latch x2 
7.Push bar x1 	8.Connect tube x1 	9.Canopy x1 
10.Canopy stick x1 	11.Cup holder x1 	12.J-shaped stick x1 
13.M5X28 BOLT x4 (one for standby) 	14.M5 NUT x4 (one for standby) 	15.Screw X1 

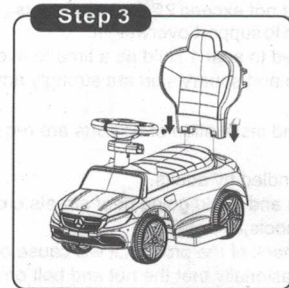
INSTRUCTIONS



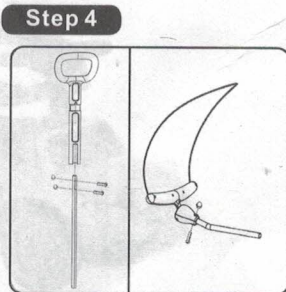
Step 1
Insert the J-shaped stick into the front of the body, make sure the right position as picture show



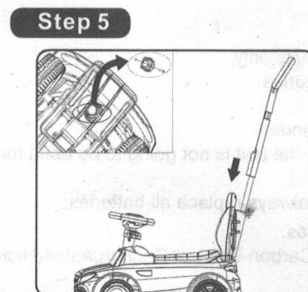
Step 2
Insert the J-shaped stick into the safety-bar fixed part and steering wheel, tight with the bolt and nut.



Step 3
Assemble the backrest into the rear of the body.

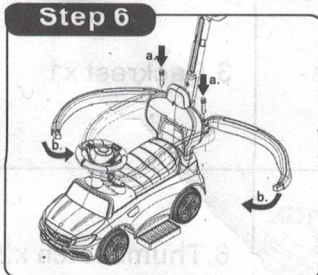


Step 4
Connect the push bar and connect tube with two bolts and nuts as a whole push bar. Assemble the canopy tube and canopy with a bolt and a nut.

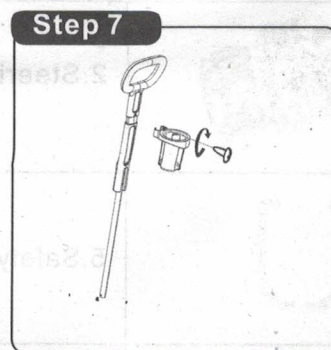


Step 5
Insert whole push bar into the hole of the backrest, then turn the body over, tight the push bar with a bolt and nut.

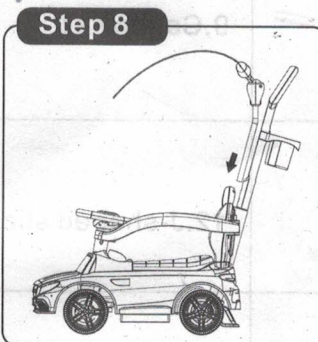
INSTRUCTIONS



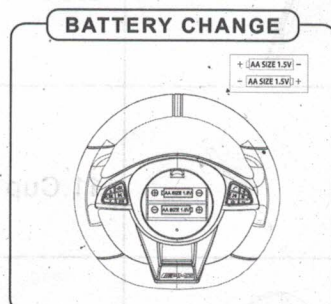
Step 6
Assemble the safety bar into the backrest by the thumb latch, then insert the safety bar into the hole of safety bar fixed part.



Step 7
Assemble the cup holder with a screw by a screwdriver (not included).



Step 8
Insert the canopy tube into the hole of the backrest, make sure it is completely firmed.



BATTERY CHANGE
Loosen the screw with a screwdriver, keep the screw in a safe place away from children's reach. Put 2 AA size batteries in the battery house. Then tight the screw with a screwdriver.