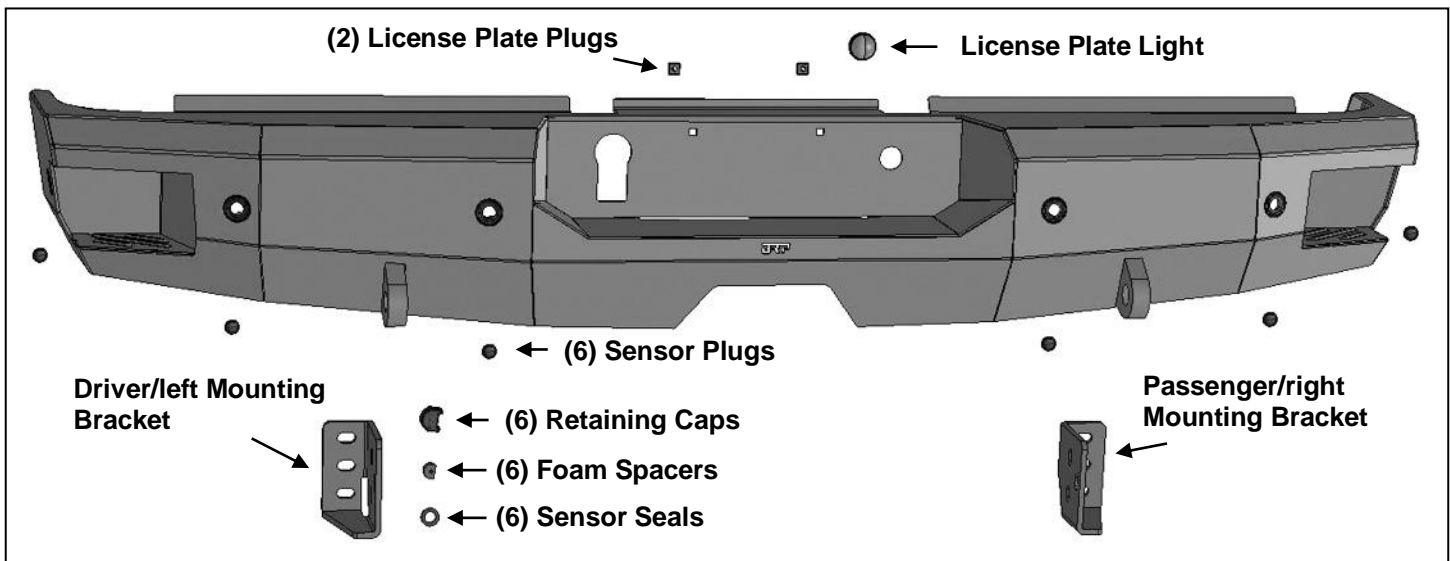


BRP PREMIUM REAR BUMPER
2009-18 RAM 1500, 2010-2022 25-3500

PARTS LIST:

1	Premier Rear Bumper	8	12mm x 37mm x 3mm Flat Washers
1	Driver/left Mounting Bracket	4	12mm Nylon Lock Nuts
1	Passenger/right Mounting Bracket	6	10mm x 40mm Hex Bolts
1	License Plate Light	12	10mm x 30mm x 2.5mm Flat Washers
2	License Plate Plugs	6	10mm Nylon Lock Nuts
6	Sensor Retaining Caps	2	4mm x 10mm Button Head Bolts
6	Foam Spacers	4	4mm x 12mm x 1mm Flat Washers
6	Sensor Seal Washers	2	4mm Lock Washers
6	Plastic Plugs	2	4mm Hex Nuts
1	Sensor Cover Kit	12	4mm Self Tapping Screws
4	12-1.75mm x 50mm Hex Bolts	1	2.5mm Wrench



PROCEDURE:

REMOVE CONTENTS FROM BOX. VERIFY ALL PARTS ARE PRESENT. READ INSTRUCTIONS CAREFULLY BEFORE STARTING INSTALLATION. ASSISTANCE IS HIGHLY RECOMMENDED TO AVOID POSSIBLE INJURY OR DAMAGE TO THE VEHICLE. ON MODELS WITH DUAL EXHAUST, ALLOW EXHAUST TO COMPLETELY COOL BEFORE STARTING INSTALLATION.

1. Remove the license plate and bracket, (Figure 1). Remove the (2) hex bolts behind the license plate, (Figure 2)
2. Unplug the license plate lights and towing plug. Unplug all wire harnesses leading to the bumper, (Figures 3 & 4).
3. Place blocks or jack stands under the bumper to support it during bumper bolt removal. Once the bumper has been safely supported, remove the hardware attaching the bumper to the end of the frame, (Figures 5—8). **WARNING!** Assistance is required to hold the bumper in place during hardware removal and to prevent the bumper from falling. Move the bumper to a clean stable work surface.
4. Determine if the vehicle is equipped with parking sensors. **NOTE:** Sensors must be installed in Bumper before installing Bumper Assembly.

Models without bumper sensors:

- a. From the front of the bumper, push the Plugs into the sensor mounts, (Figure 9).

Models with bumper mounted sensors:

- a. Unplug and remove sensors and wiring harness from the factory bumper, (Figure 10). Note location of all sensors for proper reinstallation. 2019-on models may be equipped with (6) sensors, 2009-18 models may be equipped with (4) sensors. Follow the previous Step to plug the unused outer sensor mounting holes in both ends of the Bumper on 2009-18 models as needed.
- b. Remove the sealing washer from the front of the sensor. Attach Foam Washer to the front of the sensor, (Figure 11).

**BRP PREMIUM REAR BUMPER
2009-18 RAM 1500, 2010-2022 25-3500**

- c. Slide the sensor into the sensor mount, **(Figure 11)**. Push the Foam Spacer onto the back of the sensor.
- d. Snap the Retaining Cap onto the sensor mount and lock into mounting holes, **(Figure 11)**.
- e. Repeat previous Steps to install remaining sensors.
- f. Install the factory wiring harness for the sensors. Plug harness into sensors. **NOTE:** Run wire harness through openings in Bumper.

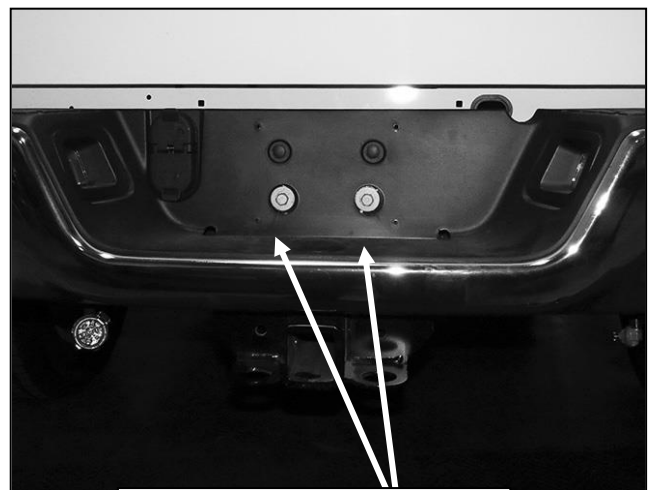
Models with TPMS (tire pressure monitoring system).

- a. Remove the sensor from the back of the factory bumper, **(Figure 12)**. **NOTE:** It may be necessary to partially disassemble the plastic bumper panel to remove the sensor.
 - b. Attach the sensor to the tabs on the back of the Bumper with the included (2) 4mm Button Head Screws, (4) 4mm Flat Washers, (2) 4mm Lock Washers and (2) 4mm Hex Nuts, **(Figure 13)**. Do not overtighten the 4mm hardware or damage to sensor could result.
 - c. Once installed, plug wiring harness into TPMS sensor.
5. Select the passenger/right Bumper Bracket, **(Figure 14)**. Attach the Bracket to the Bumper with (3) 10mm x 40mm Hex Bolts, (6) 10mm Flat Washers and (3) 10mm Nylon Lock Nuts, **(Figure 15)**. Leave hardware loose at this time. Repeat this **Step** to attach the driver/left Mounting Bracket.
 6. With assistance, position the Bumper up to the end of the frame. Temporarily support the weight of the Bumper Assembly. **WARNING:** To avoid possible injury or damage to the vehicle, do not proceed until the Bumper is fully and safely supported.
 7. Attach the Bumper to the frame with the included (4) 12mm x 50mm Hex Bolts, (8) 12mm Flat Washers and (4) 12mm Nylon Lock Nuts, **(Figure 16)**. Snug but do not fully tighten hardware at this time.
 8. Slowly open the tailgate and check for clearance. Level and adjust Bumper and tighten all hardware.
 9. Push the outer towing harness plug into the opening in the Bumper, **(Figure 17)**. If necessary, use a flat blade screwdriver to carefully pry out the lock tab on the clip to help lock the plug in place.
 10. Insert the included (2) Plastic Plugs to attach the license plate to the Bumper, **(Figure 17)**. Insert the included License Plate Light into the mounting hole in the bumper.
 11. Connect the license plate light harness to the License Plate Light. Reattach the wiring harness to the back of the trailer plug. Plug all harnesses into vehicle as equipped.
 12. Do periodic inspections to the installation to make sure that all hardware is secure and tight.

To protect your investment, Do not use any type of polish or wax that may contain abrasives that could damage the finish. Mild soap may be used to clean the Bumper assembly.

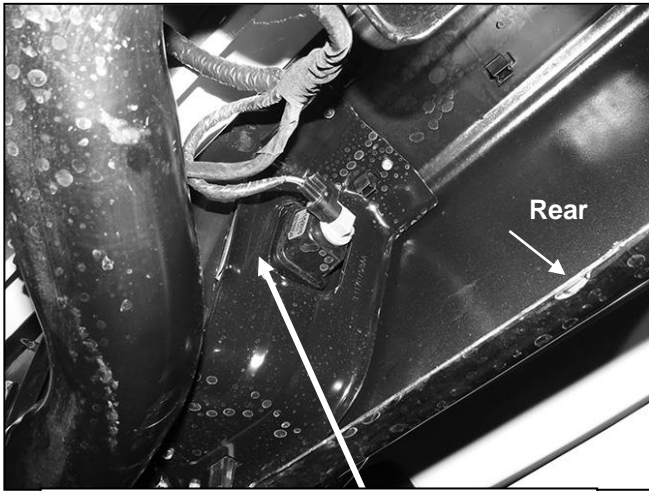


(Fig 1) Remove license plate bracket

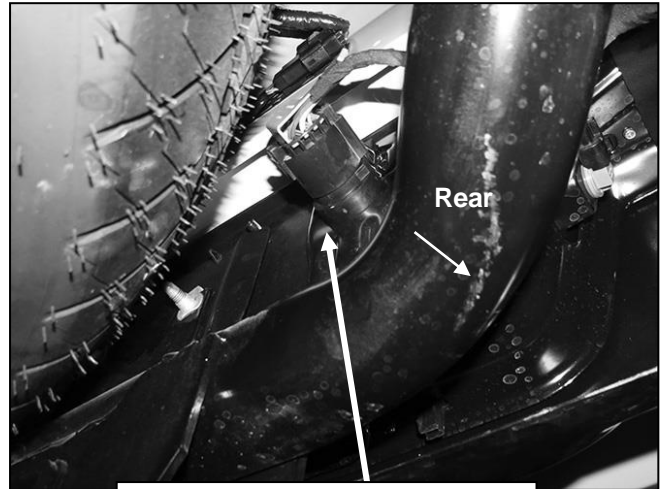


**(Fig 2) Remove (2) hex bolts
from behind license plate**

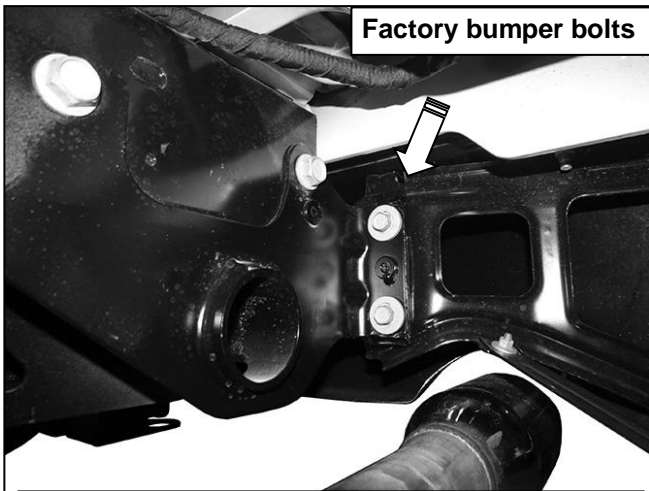
BRP PREMIUM REAR BUMPER
2009-18 RAM 1500, 2010-2022 25-3500



(Fig 3) Unplug license plate lights and all wiring harnesses leading to the bumper



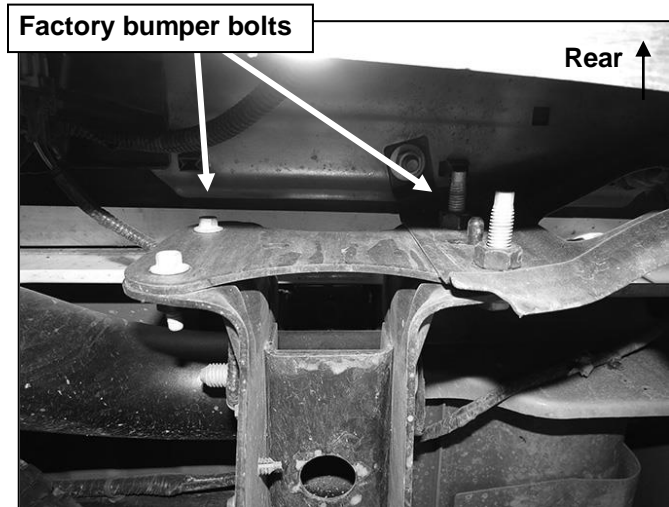
(Fig 4) Unplug trailer connector



(Fig 5) Example of factory bumper bracket with (2) hex bolts pictured from behind bumper

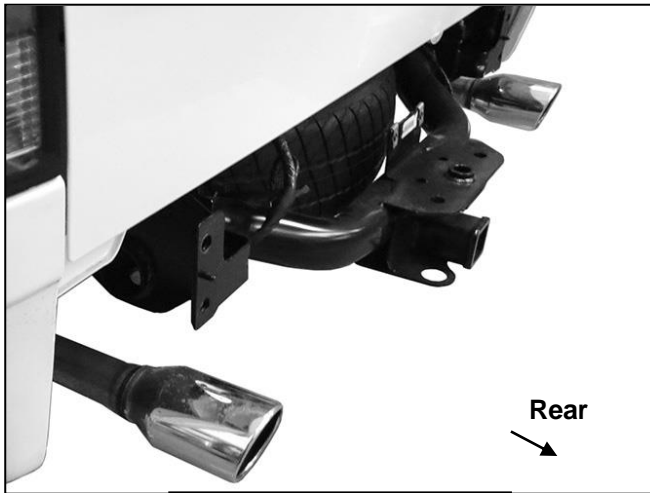
Models with dual exhaust, allow exhaust to completely cool before starting installation

WARNING! Do not crawl under bumper unless the bumper is properly supported on blocks or stands or it may fall.



(Fig 6) Example of factory bumper bracket with 8mm hex nuts (left) welded onto back of bracket

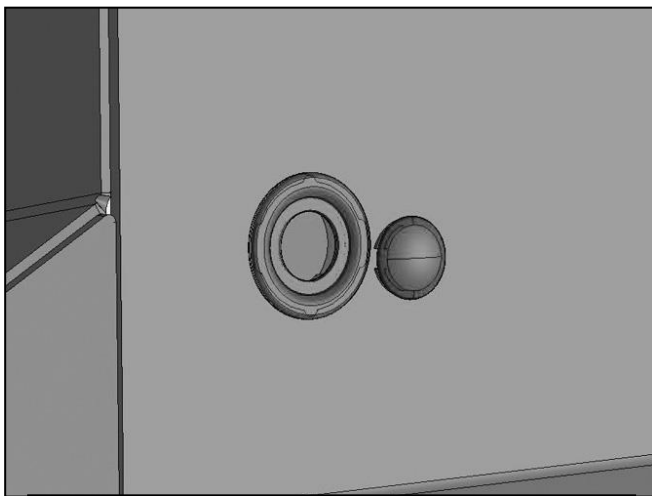
**BRP PREMIUM REAR BUMPER
2009-18 RAM 1500, 2010-2022 25-3500**



(Fig 7) Bumper removed



(Fig 8) Example of factory bumper brackets with (4) mounting holes per side, only outer mounting holes will be used

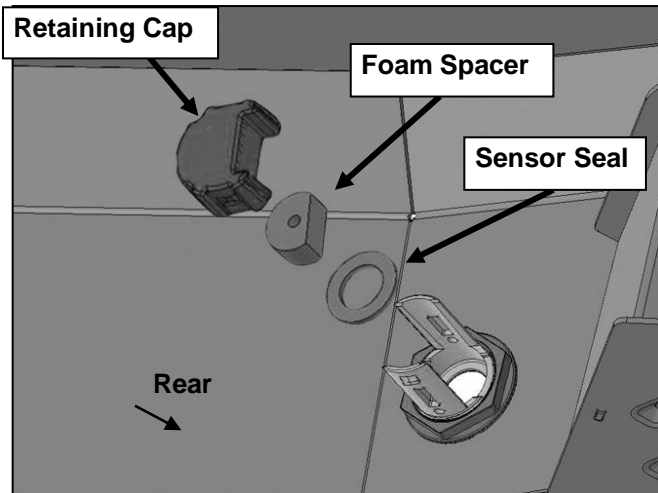


(Fig 9) Push Plastic Plugs into sensor mounts



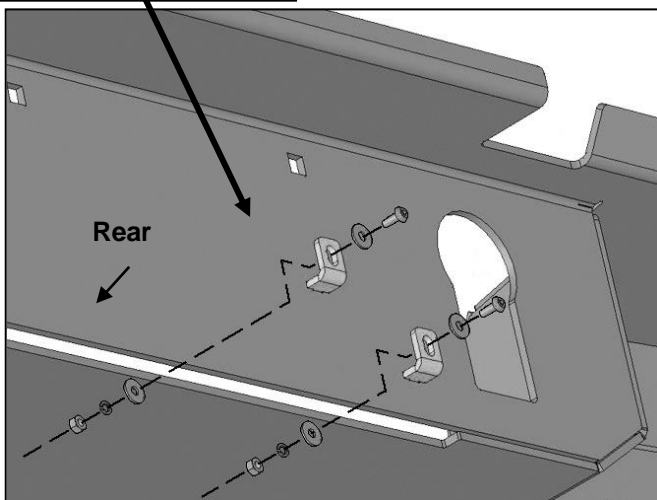
(Fig 10) Unplug and remove the factory sensors and wiring harness. Note location of each sensor for proper reinstallation

BRP PREMIUM REAR BUMPER
2009-18 RAM 1500, 2010-2022 25-3500

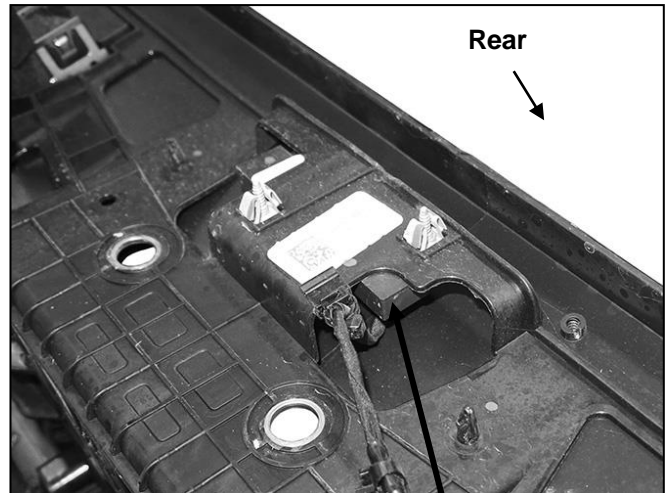


(Fig 11) Replace front seal on sensor with Foam Seal. Push sensor and Seal into sensor Mount on the back of the Bumper

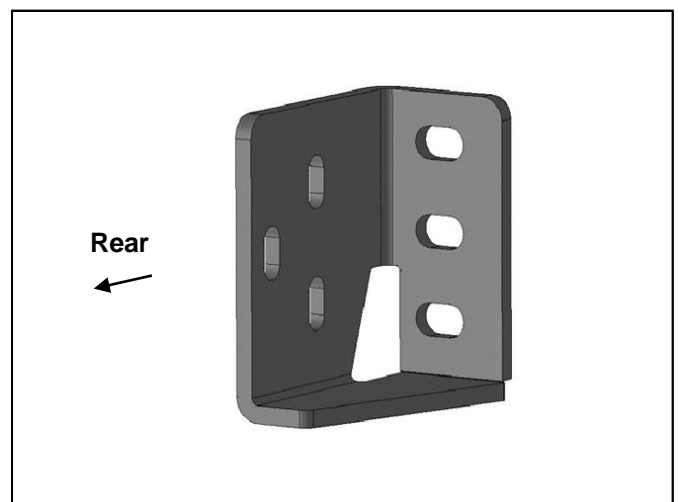
- (2) 4mm Screws
- (4) 4mm Flat Washers
- (2) 4mm Lock Washers
- (2) 4mm Hex Nuts



(Fig 13) Attach TPMS sensor to mounting tabs on back of Bumper



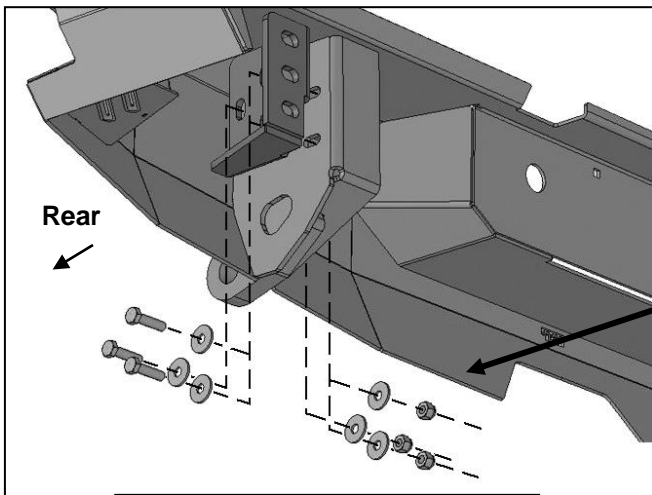
(Fig 12) Remove tire pressure monitoring sensor (TPMS) from back of bumper, if equipped



(Fig 14) Passenger/right Bumper Bracket

BRP PREMIUM REAR BUMPER
2009-18 RAM 1500, 2010-2022 25-3500

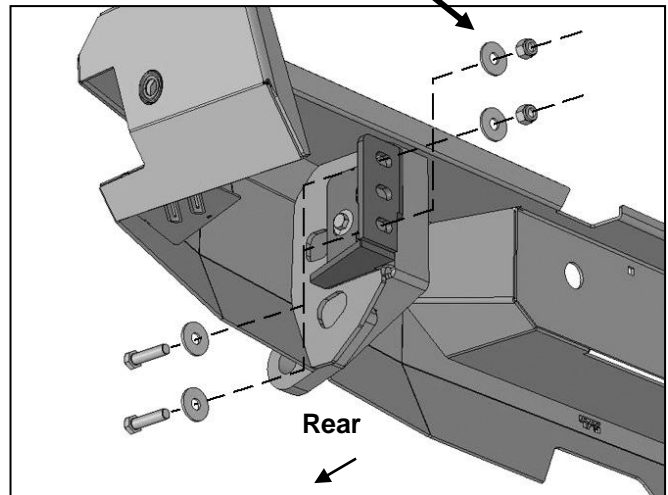
WARNING! Do not crawl under bumper unless it is properly supported on blocks or stands or the bumper may fall.



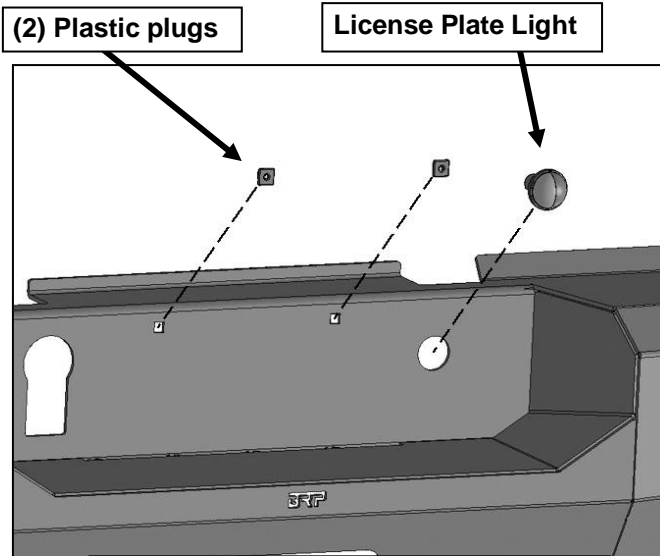
(Fig 15) Attach passenger/right Bumper Bracket to Bumper

- (3) 10mm x 40mm Hex Bolts
- (6) 10mm Flat Washers
- (3) 10mm Nylon Lock Nuts

- (2) 12mm x 50mm Hex Bolts
- (4) 12mm Flat Washers
- (2) 12mm Nylon Lock Nuts



(Fig 16) Attach passenger/right side of Bumper to frame



(Fig 17) Insert the factory trailer plug, License Plate Light and Plastic Plugs into the mounting holes in the bumper