

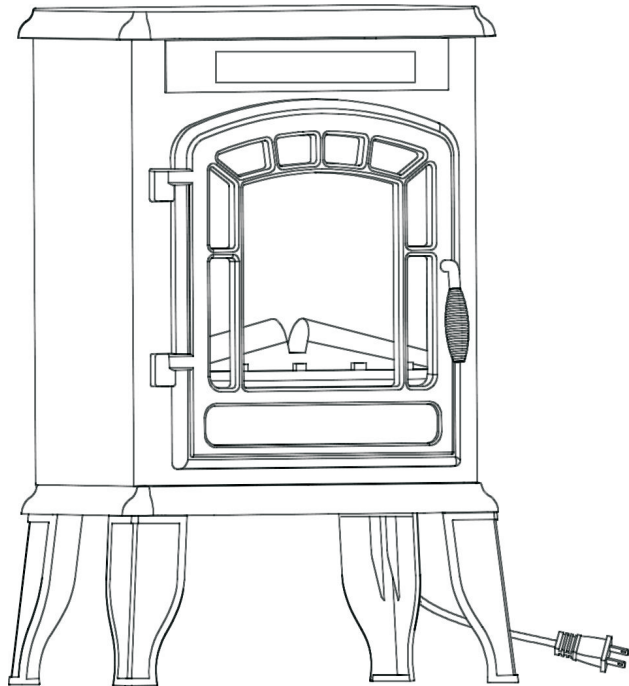


# OWNER'S MANUAL

## HUDSON

### *ELECTRIC STOVE INFRARED HEATER*

MODEL#EFS-HT15FB



 **WARNING**

Read and understand this entire owner's manual, including all safety information, before plugging in or using this product. Failure to do so could result in fire, electric shock, or serious personal injury.

 **CAUTION**

Keep this owner's manual for future reference. If you sell or give this product away, make sure this manual accompanies this product.

**NO VENTING REQUIRED**  
110V AC; 60 Hz; 1200 Watts

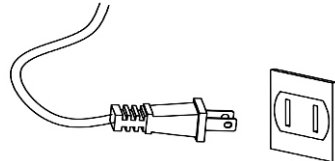
# IMPORTANT SAFETY INSTRUCTIONS!

## WARNING

- **Read all instructions before using this heater!**
- This heater is **hot when in use**. To avoid burns, **DO NOT** let bare skin touch **hot** surfaces. If provided, use handles when moving this heater. Keep **combustible materials**, such as furniture, pillows, bedding, papers, clothes, and curtains at least **3 feet (36")** from the **front of the heater**, and **keep them away from the sides and rear**.
- **Extreme caution** is necessary when any heater is used.
- **DO NOT** operate any heater with a **damaged cord or plug** or after the **heater malfunctions**, has been **dropped** or **damaged in any manner**. Discard heater, or call a certified technician for examination and *or* repair.
- **DO NOT** run **power cord** under carpeting. **DO NOT** cover power cord with throw rugs, runners, or similar coverings. **DO NOT** route power cord under furniture or appliances. Arrange power cord **away from traffic area**, and where it will not be tripped over.
- **Connect to properly grounded outlets ONLY.**
- **DO NOT** insert or **allow foreign objects to enter any ventilation or exhaust opening**, as this may cause **electric shock, fire, or damage the heater**.
- To prevent a possible fire, **DO NOT** block air intakes or exhaust in any manner. Doing so could cause a **fire**. **DO NOT** use on soft surfaces, like a bed, where openings may become blocked.
- A heater has **hot and arcing or sparking parts inside**. **DO NOT** use it in areas where **gasoline, paint, or flammable liquids** are used or stored.
- **Use this heater only as described in this manual. Any other use not recommended by the manufacturer may cause fire, electric shock, or injury to persons.**
- **ALWAYS plug heaters directly into a wall outlet/receptacle. NEVER use with an extension cord or relocatable power tap (outlet/power strip).**
- **DO NOT place the heater near a bed** because objects such as pillows or blankets can fall off the bed and be ignited by the heater.
- **NEVER** use this heater in **bathrooms, laundry rooms**, or any other location where the heater could fall into a **bathtub** or **pool**, become damp, or **come in contact with water**.
- **AVOID FIRE!** Regularly inspect all air vents to make sure they are free from dust, lint, or other blockage. Unplug the unit and clean with a **vacuum ONLY**.
- **DO NOT** rinse or get wet.
- **ALWAYS attach all four legs before plugging in or turning on this heater!** Failure to do so could **result in fire**.
- **NEVER** plug in or turn on this heater with the **air vents touching the ground!** Doing so could **result in fire**.
- This product can expose you to chemicals including lead and lead compounds which are known to the State of California to cause cancer and birth defects or other reproductive harm. For more information, go to **www.P65Warnings.ca.gov**.

## **WARNING**

- **For residential use only! NOT for commercial use!** Any commercial or public use of this heater **voids all warranties**, and could cause **injury**.
- This product is **not intended** to be a **primary heat source**. It is for **supplemental heat only**.
- **INDOOR use only! NEVER** use this heater **outdoors!** Doing so may result in **electric shock!**
- **Risk of electric shock! DO NOT OPEN!** No user-serviceable parts inside!
- **NEVER modify this heater**. Doing so could result in personal **injury** or property **damage**. Modification of this fireplace **completely voids all warranties**.
- **ALWAYS** turn this heater off before unplugging it from the outlet.
- **ALWAYS disconnect** this unit from the **power supply before** performing any assembly or cleaning, or before relocating the product.
- **NEVER** leave this heater unattended. **ALWAYS** unplug this heater when not in use.
- **ALWAYS** store this heater in a dry location, **NEVER** use the product if it has become wet.
- Place the heater near a wall outlet so an extension cord is not needed.
- **ONLY** use this heater on a minimum **120V AC 15-Amp grounded circuit**. **NEVER overload the circuit**. If this heater trips the circuit breaker, or blows the fuse, unplug it and all other appliances on the same circuit before the next use.
- **NEVER** plug this heater into an outlet that is **old, cracked**, or has any **loose wires or connections**. Plugging this heater into a faulty outlet could result in **electric arcing** within the outlet that could cause the **outlet to overheat or catch fire**.
- **ALWAYS** check your heater cord and plug connections with **each use!**
  - i) **Make sure** the plug fits tight in the outlet! Faulty wall outlet connections or loose plugs can cause the outlet to overheat.
  - ii) **Heaters draw more current** than small appliances. **Overheating** may occur even if it has not occurred with the use of other appliances.
  - iii) During use **check frequently** to see if the **plug outlet or faceplate is HOT!**
  - iv) If the outlet or faceplate is **HOT, discontinue use immediately** and have a qualified electrician inspect and/or replace the faulty outlets.
- The power cord supplied with the heater has two prongs: two flat blades (live and neutral).
- **SAVE THESE INSTRUCTIONS!**



# PREPARATION



This product includes **GLASS!** ALWAYS use **extreme caution** when **handling glass**. Failure to do so could result in **personal injury** or **property damage**.

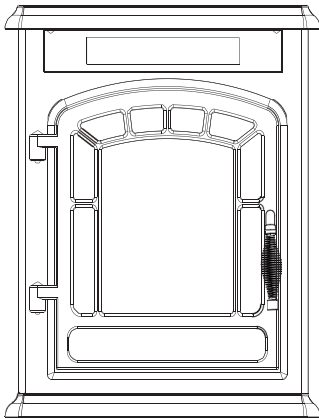
- Remove all parts and hardware from the carton and place them on a clean, soft, and dry surface.



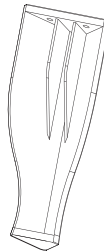
Make sure all parts are dry, and the power cord and plug are not damaged. See **IMPORTANT SAFETY INFORMATION** on pages 2 and 3.

- Compare the contents with the parts list to make sure nothing is missing.
- Dispose of all packaging materials properly.
- Please recycle whenever possible.

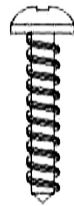
# TOOLS NEEDED (NOT INCLUDED)



One Stove(A)



4 Legs(B)



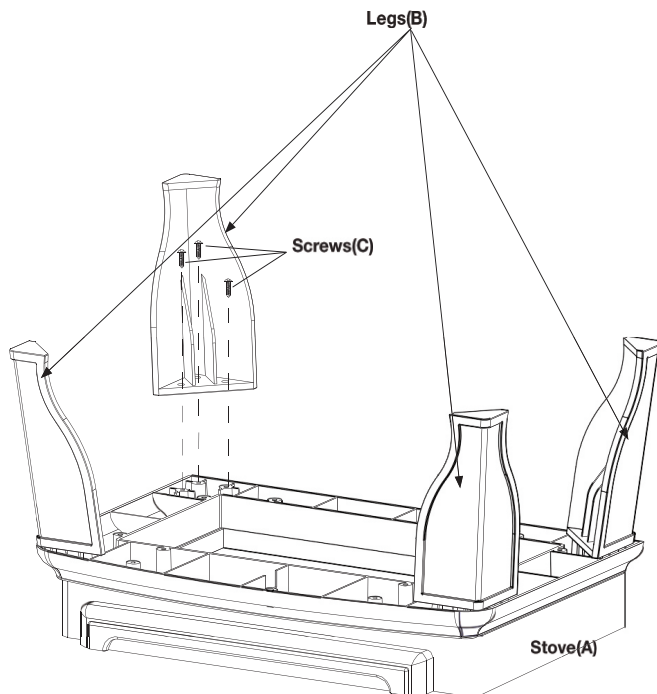
14 Screws(C)  
(2 extra screws included)

# ASSEMBLY



**ALWAYS** make sure the unit is **unplugged** before beginning **assembly!** **NEVER** move or clean the heater, while it is **plugged in**.




- STEP 1:** Carefully turn the **Stove(A)** upside down and lay it on a clean soft surface.
- STEP 2:** Align the holes in the **Leg(B)** with the holes in the corner of the stove frame as shown.
- STEP 3:** Thread three **Screws(C)** through the holes in the leg and into the stove frame.
- STEP 4:** Partially tighten the screws with a Phillips screwdriver. Repeat Steps 2 and 3 for the other three **Legs(B)**.
- STEP 5:** Check the alignment and tighten all.

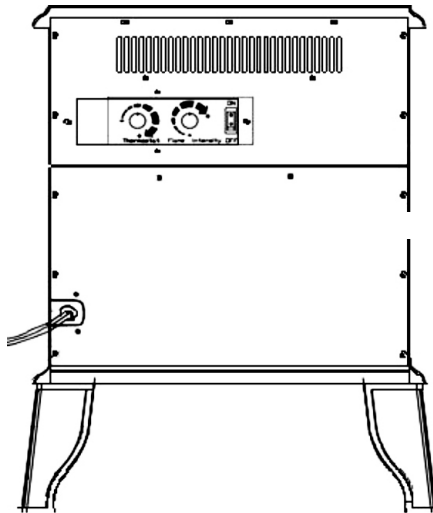


**ALWAYS** attach the feet before using! **NEVER** plug in or operate this unit if the feet are not securely attached!

## NOTICE

When the heat function is used for the first time, a slight odor may be present. This is normal and should not occur again unless the heater is not used for an extended period of time.

CONTROLS		FUNCTION
	<b>Main Power On/Off</b>	<b>Press ON. Power turns ON.</b> All functions are enabled. <b>Press OFF.</b> Power, flame effect, and all functions turn off.
	<b>Flame Intensity</b>	Turn the dimmer dial clockwise or counter clockwise to get the desired flame intensity. The function will only operate when the main power switch is <b>ON</b> .
	<b>Thermostat Control</b>	The heat output is controlled by the Thermostat Control dial. Set the Thermostat Control dial clockwise to the maximum position initially. When the room reaches the desired temperature, reduce the setting by slowly turning the thermostat dial counter clockwise until the heater will click and turn off. The heater will then maintain the room temperature at the desired level. <b>NOTE: The Heat enabling switch must be ON for the thermostat function to operate.</b>



## TEMPERATURE LIMITING CONTROL

This heater is equipped with a Temperature Limiting Control.

Should the heater reach an unsafe temperature, the heater will automatically turn **OFF**.

### **TO RESET:**

1. Turn the **ON/OFF** switch on the **CONTROL PANEL** to **OFF**.
2. Unplug the power cord from the outlet.
3. **Wait 5 minutes.**
4. Inspect the fireplace to make sure no vents are blocked, or clogged with dust or lint. If they are, use a vacuum to clean the vent areas.
5. With the **POWER** switch **OFF**, plug the power cord back into the outlet. If the problem continues, have your outlet and wiring inspected by a certified technician.

## CARE AND MAINTENANCE

### **CLEANING**

#### **Metal:**

Dust using a soft cloth, slightly dampened with a citrus oil-based product.

**DO NOT** use brass polish or household cleaners as these will damage the metal.

#### **Glass:**

Spray glass cleaner onto soft cloth (NOT directly on to glass).

Dry thoroughly with a paper towel or lint-free cloth.

#### **Plastic:**

Wipe with a slightly damp cloth and a mild solution of dish soap and warm water.

#### **Vents:**

Use a vacuum or duster to remove dust and dirt from the heater and vent areas as needed.



**NEVER immerse in water or spray with water or other liquids (ex: cleaning solutions).**

Doing so could result in **electric shock, fire, or personal injury.**



**Risk of electric shock! DO NOT OPEN the main panels! No user-serviceable parts inside!**

#### **Storage:**

Store heater in a clean dry place when not in use.

#### **Electrical and Moving Parts:**

The fan and motors are lubricated at the factory and will not require lubrication for the life of the product. All electrical parts and components, except for the LED light(s) are integrated into the heater and are not serviceable by the consumer.



**DO NOT** operate this heater without the Access Panel in place.

**DO NOT** remove the back cover. There are no user-serviceable parts.

# LIMITED WARRANTY

This warrants to the original purchaser that this product is free from defects in material and workmanship as of the date of purchase and that it will, under normal use and proper care, remain so for one year from the date of purchase. Missing or initially defective parts will be replaced free of charge during the period of this limited warranty. If parts are unavailable, comparable replacement or refund will be given. The original dated sales receipt is required for all warranty claims. This warranty does not cover damage which has occurred during transport from the point of purchase to the consumer's home. This warranty does not cover glass, LED lights, remote controls, or batteries.

## **THIS PRODUCT IS FOR RESIDENTIAL USE ONLY**

Any and all commercial use of this product voids all warranties, and frees the manufacturer from all liability. Read and understand all assembly and operating instructions, and all safety information and warnings, before use. The following will void this warranty: Damage caused from tampering with, modifying, or altering the product in any manner; Damage due to incorrect assembly, improper care, misuse, or abuse; Damage from being used with the wrong power source; Water damage; Damage caused from this product being used outdoors; Damage caused from this product being used for excessive periods of time; Damage caused by the product being used in a commercial application; Damage from use as a primary heat source; Other misuse or abuse not specifically listed herein.

## **THIS PRODUCT IS NOT INTENDED TO BE USED AS A PRIMARY HEAT SOURCE**

Dong Fang Jun Ma (hereafter DFJM) its directors, officers, or agents, will not be liable to the purchaser or any third party, whether in contract, in tort, or on any other basis, for any indirect, special, punitive, exemplary, consequential, or incidental loss, cost, or damage arising out of or in connection with the sale, maintenance, use, or inability to use this product, even if DFJM, or its directors, officers, or agents have been advised of the possibility of such losses, costs or damages, or if such losses, costs, or damages are foreseeable. In no event, will DFJM, or its officers, directors, or agents be liable for any direct losses, costs, or damages that exceed the purchase price of the product. Some states do not allow the exclusion or limitation of incidental or consequential damages, so the above limitation or exclusion may not apply to the purchaser. This limited warranty gives you specific legal rights, and you may also have other rights which vary from state to state.

Thank you for purchasing this product! If you have questions about the assembly or operation of this product, are missing parts, or have defective parts, please e-mail us at:

**customerservice@dongfangjm.com**

Or, call us toll free (M-F 8:30am to 4:30pm Central Time) at:

**1-866-273-2284**

Manufactured by:

**Dong Fang Jun Ma**  
342 Caishiji Road, Suma Park,  
Suzhou, Anhui Province.

**MADE IN CHINA**

