



MEET OUR INNOVATIVE LINE OF
CAULKS & SEALANTS
 THAT EXCEED INDUSTRY
 PERFORMANCE SPECIFICATIONS



Franklin International

Sales: 1.800.669.4583 / Technical: 1.800.347.4583 ©2018 BCM 1/18 FF937





WEATHERMASTER SEALANT

Formulated to outperform all other sealant technologies, including silicones, tripolymers and urethanes. This superior polymer formula provides the best possible performance on siding, windows, doors and vents. In addition to offering flexibility, it provides unbeatable adhesion to wood, masonry, PVC, fiber cement, siding/trim and most common building materials. Available in over 175 colors, WeatherMaster matches today's most popular siding colors, regardless of the material or manufacturer. When touch-ups are needed, this sealant can be painted within one hour with premium grade water-based paint.

- ▶ White - Product #: 44001
- ▶ Crystal Clear (Paintable) - Product #: 43991
- ▶ Translucent (Not Paintable) - Product #: 44011
- ▶ 175+ Colors

- VOC-compliant
- UV-resistant
- Weather resistant
- Storage life - 24 months
- Service temperature -75°F to 300°F (-59°C to 149°C)
- Joint flexibility - ± 50%
- Ideal for windows, trim, siding, gutters, downspouts, fiber cement & engineered wood

ALL SIDING SEALANT

A unique, water-based elastomeric formula that offers superior adhesion on all common construction materials. It is ideal for sealing doors, windows, soffits and awnings around vinyl, aluminum, stucco, wood, brick and glass. This product dries quickly and it can be painted within 2-4 hours of application. It is also de-aired for a smooth, uniform bead and cleans up with water when wet.

- ▶ White - Product #: 3301
- ▶ 6+ Colors

- VOC-compliant
- Weather resistant
- Storage life - 24 months
- Service temperature -35°F to 180°F (-37°C to 82°C)
- Joint flexibility - ± 25%
- Ideal for windows, trim, siding & vents



Visit www.TITEBOND.com for the most up-to-date product information.



METAL ROOF SEALANT

MIAMI-DADE COUNTY APPROVED

Provides a weather-tight seal against water, wind, dust and dirt. It offers exceptional adhesion to Kynar™ coated metal materials, along with standard metal, aluminum, steel, galvanized bonderized surfaces, plastics and glass. The product is ideal for use on a wide variety of metal roof, trim, architectural metal siding, aluminum, galvanized steel, galvanized gutters, flashing and downspouts. It also provides unbeatable adhesion to wood, masonry, polycarbonate, PVC and most common building materials.

- ▶ White - Product #: 61001
- ▶ Crystal Clear (Paintable) - Product #: 63991
- ▶ Translucent (Not paintable) - Product #: 61111
- ▶ 50+ Colors

- VOC-compliant
- UV-resistant
- Weather resistant
- Storage life - 24 months
- Service temperature -75°F to 300°F (-59°C to 149°C)
- Joint flexibility - ± 50%
- Approved for use on buildings in both Miami-Dade County and throughout the country
- Ideal for metal roof, trim, architectural metal siding, general roofing applications, galvanized gutters & downspouts

GUTTER & SEAM SEALANT

Provides a highly weather-resistant seal against water, wind, dust and dirt. This long-lasting, advanced polymer sealant retains resiliency and flexibility for years. It was formulated specifically for sealing aluminum, galvanized and vinyl clad gutters and downspouts. This product provides superior adhesion to wood, metal, aluminum, steel, plastics, masonry and glass. It expands and contracts with the change of weather and will not crack.

- ▶ White - Product #: 7321
- ▶ Available in white and aluminum gray

- VOC-compliant
- Weather resistant
- Storage life - 18 months
- Service temperature -75°F to 300°F (-59°C to 149°C)
- Joint flexibility - ± 50%
- Ideal for gutters (aluminum, galvanized & vinyl clad) and downspouts

ROOF PLUS SEALANT

A water-resistant, solvent-based, elastomeric rubber sealant. It has exceptional adhesion to most common roofing materials, such as metal trim, solar roof systems, aluminum, architectural metal and painted metal. The clear formula blends with any substrate color, but is also paintable within two hours if needed.

- ▶ Clear - Product #: 3241

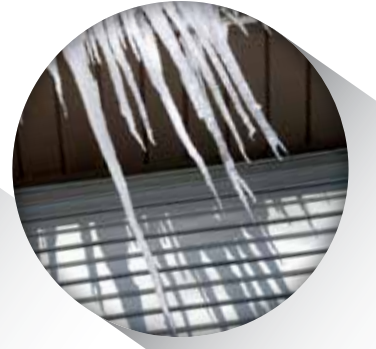
- Weather resistant
- Storage life - 24 months
- Service temperature -40°F to 180°F (-40°C to 82°C)
- Joint flexibility - ± 12.5%
- Easy to gun & tool
- Ideal for roofing (shingled, tiled, liquid applied & sheet), flashings & sealed wood forms

ROOF CEMENT SEALANT

An all-weather, asphalt-based patching compound specifically designed and formulated to repair cracks, seams, gaps and holes in roofing materials. This sealant is ideal for repair and new-construction roofing applications. Titebond Roof Cement is used to set flashings, drip edges and roofing material edges, as well as to install shingles and roll roofing. Seals around skylights, vents, chimneys, valleys and exhaust pipes.

- ▶ Black - Product #: 3211

- Weather resistant
- Storage life - 12 months
- Service temperature -40°F to 120°F (-40°C to 49°C)
- Ideal for vents, chimneys, exhaust pipes, flashings, drip edges & general repair



Visit www.TITEBOND.com for the most up-to-date product information.



ULTIMATE MP SEALANT

MIAMI-DADE COUNTY APPROVED

Offers unbeatable adhesion to aluminum, painted metal, polycarbonate, PVC, concrete, wood, masonry, vinyl, glass, plastic, siding, flashing, & sheet metal including Kynar™ coated metal panels. It adheres well to damp surfaces & provides a weather-tight seal against water, wind, dust & dirt.

- ▶ White 10 oz. (Paintable) - Product #: 71001
- ▶ Crystal Clear (Paintable) - Product #: 73991
- ▶ Translucent (Not paintable) - Product #: 71111
- ▶ 20+ Colors

- VOC-compliant
- Weather resistant
- Storage life - 24 months
- Service temperature -75°F to 300°F (-59°C to 149°C)
- Joint flexibility - ± 50%
- Ideal for gutters, siding (metal & vinyl) windows, doors, air vents, RVs, tractor trailers, buses & general roofing applications
- Approved for use on buildings in both Miami-Dade County and throughout the country

ULTIMATE MP TEXTURED SEALANT

An elastic moisture curing sealant with a textured consistency perfect for use on asphalt, stucco, concrete, mortar, wood, brick, concrete and stone. It can be extruded in extreme temperatures with a unique polyether chemistry to eliminate out-gassing on green concrete and protect against discoloration when exposed to ultraviolet light.

- ▶ White - Product #: 88001
- ▶ Available in white, buff, gray, stone, bronze and cream

- VOC-compliant
- Weather resistant
- Storage life - 18 months
- Joint flexibility - ± 35%
- Ideal for stucco, concrete, pool decks and basements

UA 920 SEALANT

A urethane acrylic elastomeric formula that does it all. It has excellent adhesion & flexibility, making it the professional's ideal choice for all interior & exterior construction, home remodeling & repair projects. It is mildew resistant, non-yellowing & reduces dirt pickup. UA 920 forms an airtight, water-resistant seal on most common building material, including concrete, fiber cement, metal, wood & vinyl siding & trim. It offers a quick grab, is easy to tool & finish & remains flexible.

- ▶ White - Product #: 8701
- ▶ Available in white, almond, bronze and clear

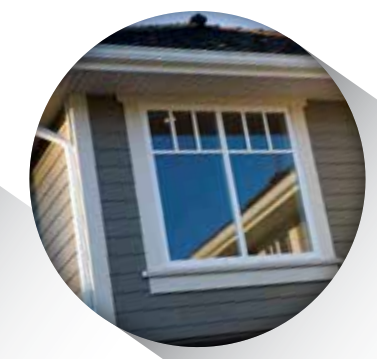
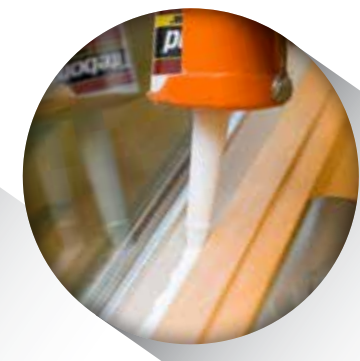
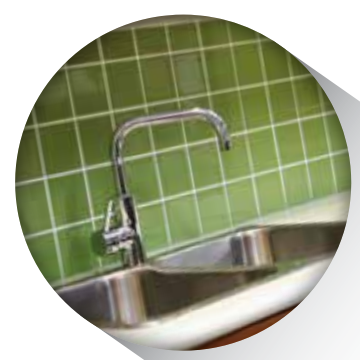
- VOC-compliant
- UV-resistant
- Weather resistant
- Storage life - 24 months
- Service temperature -40°F to 180°F (-40°C to 82°C)
- Joint flexibility - ± 25%
- Ideal for general home remodeling projects & interior/exterior joints

100% SILICONE SEALANT

A versatile formula that is ideal for both interior and exterior applications. It is an RTV industrial sealant and offers excellent adhesion to many common construction materials, including vinyl, aluminum, glass and painted surfaces. It also provides a strong, flexible seal that offers excellent water-resistance. When fully cured, Titebond 100% Silicone Sealant can withstand extreme temperature conditions. The 100% antimicrobial formula will not crack or become brittle with age and resists fading or yellowing. It also extrudes easily in lower temperatures and dries quickly.

- ▶ White - Product #: 2601
- ▶ Available in white, clear, almond and black

- VOC-compliant
- Storage life - 24 months
- Service temperature -60°F to 350°F (-51°C to 176°C)
- Joint flexibility - ± 25%
- Mildew resistant
- NSF 51 certified for direct food contact
- Ideal for general residential joint repairs & construction, remodeling & repair projects



Visit www.TITEBOND.com for the most up-to-date product information.

MULTI-PURPOSE



KITCHEN & BATH SEALANT

A modified, acrylic formula specifically designed to permanently seal high-moisture areas found in kitchens and baths. It is ideal for sealing around tubs, showers, sinks and countertops and offers excellent adhesion to many common materials including vinyl, ceramic tile, aluminum, glass, marble, brick, wood, porcelain, plastic and painted surfaces. This flexible, mildew-resistant sealant offers strong, watertight adhesion and will not discolor over time. When fully cured, Kitchen & Bath is safe for food preparation areas and offers a durable water, humidity and stain-resistant seal.

- VOC-compliant
- Storage life - 24 months
- Mildew resistant
- Water resistant
- Service temperature 0°F to 160°F (-18°C to 71°C)
- Ideal for kitchens, baths, tubs, sinks & countertops

PAINTER'S PLUS CAULK

A high-quality, versatile, siliconized acrylic caulk that is designed for both interior and exterior applications. It offers an excellent flexible, air-tight, water-resistant seal. Painter's Plus provides a strong bond to most common building materials, including wood, metal, glass, masonry, aluminum and brick. It is ideal for sealing joints, repairing cracks and back filling gaps. Titebond Painter's Plus is de-aired for a smooth, uniform bead that extrudes and tools easily. It can be painted with one coat of a water-based paint and will not bleed through the paint. Titebond Painter's Plus is a non-stringing formula that won't sag or drool and has excellent bead cut-off. It also cleans up with water when wet.

- VOC-compliant
- Weather resistant
- Mildew resistant
- Storage life - 24 months
- Service temperature -25°F to 180°F (-32°C to 82°C)
- Paintable after 2-4 hours
- De-aired for smoother bead
- Ideal for tubs, showers & sinks; interior/exterior crack repairs; back filling gaps

PAINTER'S CAULK

An economical, easy-to-use caulk that is formulated for interior pre-paint preparation. It offers good weather-resistance and provides a strong bond to most common building materials, including wood, metal, glass, masonry, aluminum and brick. It can be used for sealing joints, repairing cracks and back filling gaps. Titebond Painter's is de-aired for a smooth, uniform bead that extrudes and tools easily. It is intended for interior use and can be painted with one coat of a water-based, interior paint and will not bleed through the paint. Titebond Painter's is a non-stringing formula that won't sag or drool and has excellent bead cut-off. It also cleans up with soap and water when wet.

- VOC-compliant
- Weather resistant
- Mildew resistant
- Storage life - 24 months
- Service temperature -25°F to 180°F (-32°C to 82°C)
- Ideal for tubs, showers, sinks; general interior crack repairs; back filling gaps



Visit www.TITEBOND.com for the most up-to-date product information.



CONCRETE JOINT SL SEALANT

A one-component, self-leveling, premium grade, high performance advanced polymer sealant. It is specifically engineered for expansion/contraction joints and cracks in concrete decks and floors. This UV-resistant product works well for radon applications. It flows easily and smoothly into concrete cracks and joints, providing a permanent and durable seal.

- VOC-compliant
- Weather resistant
- Storage life - 18 months
- Service temperature -75°F to 300°F (-59°C to 149°C)
- Joint flexibility - ± 25%
- Ideal for driveways, sidewalks & garages

CONCRETE REPAIR SEALANT

A durable, acrylic latex formula for the repair of cracks in concrete, masonry and stucco surfaces. It develops a strong, flexible bond. It dries quickly to a textured gray color that blends well with the surrounding surfaces. It provides an air-tight, weather-resistant seal. In addition, Titebond Concrete Repair is ready to use, extrudes easily and cleans up with water when wet.

- VOC-compliant
- Weather resistant
- Storage life - 24 months
- Service temperature -25°F to 180°F (-31°C to 82°C)
- Excellent adhesion & flexibility
- Ideal for sidewalks, patios, basements, driveways, steps & mortar joints

BLACKTOP REPAIR SEALANT

A durable, acrylic-latex formula for the repair of cracks in asphalt driveways, playgrounds, pavement and parking lots. It offers excellent adhesion and flexibility, which are superior to traditional tar or asphalt repair products. In addition, it resists oil, gas, grease and salt and it will not chip, peel or pull away from the surface. This product dries quickly to a textured black color that blends well with the surrounding surfaces. It provides an air-tight, water-resistant seal. In addition, Titebond Blacktop Repair is ready to use, extrudes easily and cleans up with water when wet.

- VOC-compliant
- Weather resistant
- Storage life - 24 months
- Service temperature -25°F to 180°F (-31°C to 82°C)
- Extrudes easily
- Durable - resists oil, gas, grease & salt
- Ideal for asphalt driveways, playgrounds, pavement & parking lots

RADON SEALANT

Specifically designed to reduce the entry of radon. It should be used on foundation cracks, joints and penetrations, around foundation coatings normally used for damp proofing and membranes surrounding the foundation. It is an extremely flexible and durable product which allows for extension and compression of at least 25%. The mold and mildew-resistant formula dries quickly and contains no added ozone-depleting chemicals, making it safer for you and the environment.

- VOC-compliant
- Weather resistant
- Storage life - 24 months
- Service temperature -35°F to 180°F (-37°C to 82°C)
- Joint flexibility - ± 25%
- Ideal for foundation cracks, joints & penetrations

ACOUSTICAL SMOKE & SOUND SEALANT

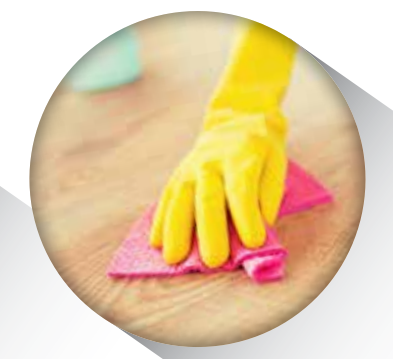
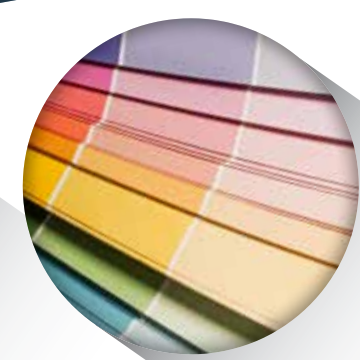
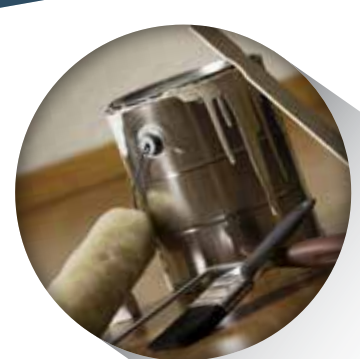
A non-flammable, latex-based product designed to improve STC (Sound Transmission Class) ratings in wall and floor systems. It adheres firmly to wood or metal studs, concrete, gypsum board and most other types of building substrates. Its unique formulation is non-staining and non-migrating. The sealant is used for unexposed applications at perimeter joints, floor and ceiling runners (either wood or metal), cutouts in gypsum board, veneer plaster systems and other areas where a sound rated assembly is required.

- VOC compliant
- Weather resistant
- Storage life - 24 months
- Service temperature -20°F to 150°F (-28°C to 65°C)
- Joint flexibility - ± 25%
- Ideal for interior & exterior use, sealing air gaps and plate around portion panels, repair cracks, eliminating rattles in drywall and plaster, and back filling trim

	AAIA 808.3-92	ASTM C834	ASTM C920	ASTM 1382	ASTM D3409	ASTM D4586	ASTM E84	ASTM E90	FDA 21-CFR-177.2600	NFPA Fire Rating-Class A	NSF 51 Certified	TT-5-00230C	UL 723	CAN/CGSB-19.13-M87
WEATHERMASTER														
ALL SIDING														
METAL ROOF														
GUTTER & SEAM														
ROOF PLUS														
ROOF CEMENT														
ULTIMATE MP														
ULTIMATE MP TEXTURED														
UA 920														
100% SILICONE														
KITCHEN & BATH														
PAINTER'S PLUS														
PAINTER'S														
CONCRETE JOINT SL														
CONCRETE REPAIR														
BLACKTOP REPAIR														
RADON														
ACOUSTICAL SMOKE & SOUND														

Titebond caulks and sealants must pass stringent testing set forth by standardized testing methods. These specifications ensure that a product is suitable for a specific application and that it will perform as expected. A reference guide is provided above.

Paintable	Standard Colors	VOC Content	Cleanup
1 Hour	175+	< 3%	Isopropyl Alcohol / Acetone
2-4 Hours	6	< 1.5%	Water
Yes	50+	< 3%	Isopropyl Alcohol / Acetone
Yes	2	< 3%	Isopropyl Alcohol / Acetone
Yes	1	315 g/L	Xylene
Yes	1	250 g/L	Xylene
Yes	1	< 3%	Isopropyl Alcohol / Acetone
25+	25+	< 3%	Isopropyl Alcohol / Acetone
1 Hour	6	< 3%	Water
1 Hour	4	< 1.5%	Mineral Spirits
2 Hours	4	< 3%	Water
No	4	< 1.5%	Water
4-6 Hours	3	< 1.5%	Water
2-4 Hours	9	< 1.5%	Water
2-4 Hours	1	< 1.5%	Isopropyl Alcohol / Acetone
2-4 Hours	2	< 3%	Water
1 Hour	NA	< 1.5%	Water
2-4 Hours	NA	< 1.5%	Water
2-4 Hours	NA	< 1.5%	Water
2-4 Hours	NA	< 1.5%	Water
2-4 Hours	NA	42.2 g/L	Water



Visit www.TITEBOND.com for the most up-to-date product information.

IN ADDITION TO A ROBUST OFFERING OF RELIABLE
CAULKS & SEALANTS, FRANKLIN INTERNATIONAL
IS A LEADER IN THE CATEGORIES OF:

- WOOD GLUES
- CONSTRUCTION ADHESIVES
- FLOORING ADHESIVES
- FOAM SEALANTS

Titebond products contain VOC content levels that make them available for sale and use anywhere in the United States and other countries with similar VOC regulations. Our product line focuses on reduced VOC levels and less air pollution, as well as reducing the reliance on crude oil derivatives.

