

greenworks[®]

60MBL520

EN	7413302	60V MINI BIKE	SERVICE MANUAL
EN	7413302T	60V MINI BIKE	SERVICE MANUAL



OVC912

www.greenworkstools.com

REV1.0

1

CONTENTS

LABELS-WARNING/SAFETY.....	3
LABELS-BRAND/MODEL	5
BRAKING COMPONENTS.....	7
FRONT SUSPENSION.....	9
ELECTRICAL COMPONENTS.....	11
CHASSIS AND SUSPENSION.....	13

NOTE: ILLUSTRATIONS MAY OR MAY NOT REPRESENT THE ACTUAL ASSEMBLIES AND IT IS NOT RECOMMENDED TO USE THIS MANUAL AS A GUIDE TO ASSEMBLE OR DISASSEMBLE THE MINIBIKE.

LABELS-WARNING/SAFETY

⚠ WARNING:

PLEASE POWER OFF BEFORE REMOVE THE BATTERY PACK. / VEUILLEZ ÉTEINDRE AVANT D'ENLEVER LE PAQUET DE BATTERIE. / POR FAVOR, APAGUE ANTES DE RETIRAR LA BATERÍA.

11-01

⚠ WARNING:



⚠ WARNING:

ALWAYS USE AN APPROVED HELMET AND PROTECTIVE GEAR. NEVER USE ON PUBLIC ROADS. NEVER USE WITH DRUGS OR ALCOHOL.


⚠ AVERTISSEMENT:

PORTEZ TOUJOURS UN CASQUE ET UN ÉQUIPEMENT DE PROTECTION APPROUVÉS. NE JAMAIS UTILISER SUR LA VOIE PUBLIQUE. NE JAMAIS UTILISER AVEC DES DROGUES OU L'ALCOOL.

⚠ ADVERTENCIA:

UTILICE SIEMPRE UN CASCO Y EQUIPO DE PROTECCIÓN APROBADOS. NUNCA USAR EN VÍAS PÚBLICAS. NUNCA USE CON DROGAS O ALCOHOL.

11-02




UNDER
16

⚠ WARNING: OPERATION OF THIS BIKE BY CHILDREN UNDER THE AGE OF 18 INCREASES THE RISK OF SEVERE INJURY OR DEATH. ADULT SUPERVISION REQUIRED FOR CHILDREN UNDER AGE 16. NEVER PERMIT CHILDREN UNDER AGE 16 TO OPERATE THIS BIKE.

⚠ AVERTISSEMENT: L'UTILISATION DE CE VÉLO PAR DES ENFANTS DE MOINS DE 16 ANS AUGMENTE LE RISQUE DE BLESSURES GRAVES OU DE DÉCÈS. ADULTESURVEILLANCE REQUISE POUR LES ENFANTS DE MOINS DE 16 ANS. NE PERMETTEZ JAMAIS AUX ENFANTS DE MOINS DE 16 ANS DE FAIRE FONCTIONNER CE VÉLO.

⚠ ADVERTENCIA: EL USO DE ESTA BICICLETA POR NIÑOS MENORES DE 16 AÑOS AUMENTA EL RIESGO DE LESIONES GRAVES O LA MUERTE. SE REQUIERE SUPERVISIÓN DE UN ADULTO PARA NIÑOS MENORES DE 16 AÑOS. NUNCA PERMITA QUE NIÑOS MENORES DE 18 AÑOS MANEJEN ESTA BICICLETA.

11-03



⚠ WARNING: NEVER RIDE AS A PASSENGER. PASSENGERS CAN CAUSE A LOSS OF CONTROL, RESULTING IN SEVERE INJURY OR DEATH.

⚠ AVERTISSEMENT: NE ROULEZ JAMAIS EN TANT QUE PASSAGER. LES PASSAGERS PEUVENT CAUSER UNE PERTE DE MAÎTRISE, ENTRAÎNANT UNE GRAVE BLESSURE OU DÉCÈS.

⚠ ADVERTENCIA: NUNCA VIAJE COMO PASAJERO. LOS PASAJEROS PUEDEN CAUSAR UNA PÉRDIDA DE CONTROL, LO QUE RESULTA EN LESIONES GRAVES O LA MUERTE.

11-04

⚠ WARNING:

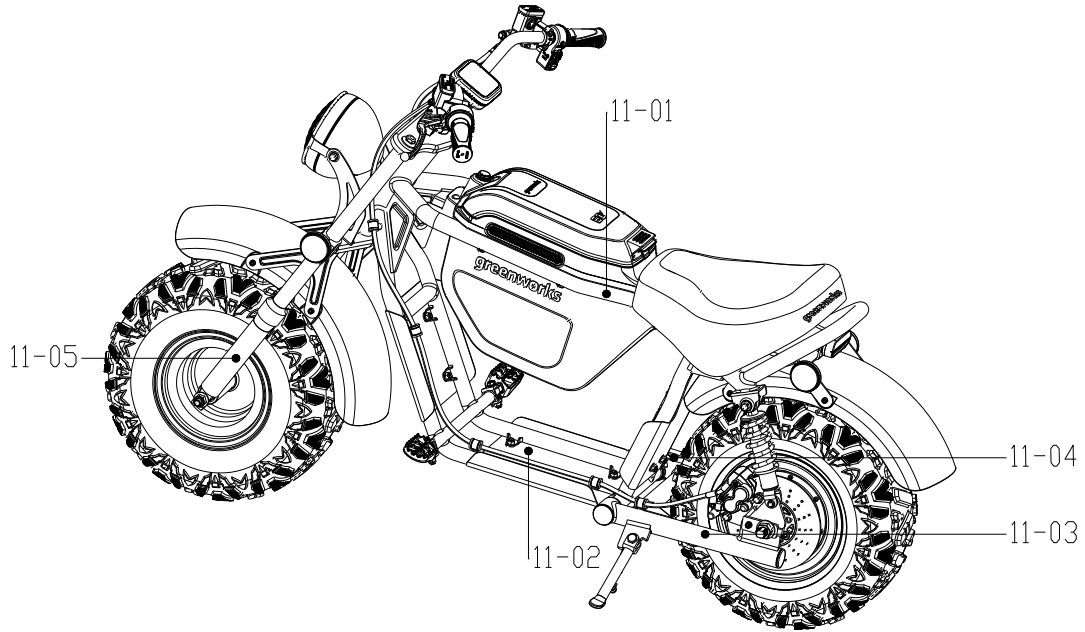
Improper tire pressure or overloading can cause loss of control. Loss of control can result in severe injury or death.

- Cold tire pressure:
 - Min : 10 PSI (69 kPa)
 - Max : 24 PSI (165 kPa)
- Maximum weight capacity : 220 lbs.(100kg)

11-05

11-1

ITEM NO.	PAPT NO.	DESCRIPTION	QTY
11-01	R0207491-00	Power Off - Warning Label	1
11-02	R0207493-00	Common Use - Warning Label	1
11-03	R0207492-00	Under 16 Years Of Age Prohibited – Warning Label	1
11-04	R0207495-00	No Passengers – Warning Label	1
11-05	R0207494-00	Tire Pressure Label	1



11-2

LABELS-BRAND/MODEL

greenworks
60V Mini Bike IPX4
 MODEL / MODÈLE / MODELO : 60MBL520
 Max Speed/Vitesse maximale/Velocidad máxima : 25 mph
 Nominal Power/Puissance nominale/Potencia Nominal : 1000 W

Use only with battery listed in Operator's Manual or LB6081/
 Utiliser uniquement avec la batterie indiquée dans le manuel
 d'utilisation ou LB6081/
 Utilice solo con la batería incluida en el Manual del
 operador o LB6081.

STORE INDOORS WHEN NOT IN USE /
 ENTREPOSER À L'INTÉRIEUR LORSQU'IL N'EST PAS UTILISÉ /
 ALMACENALO EN INTERIORES CUANDO NO ESTÉ EN USO.

This device contains/This device contains/Cet appareil contient:
 FCC ID : 2ANDL-BF6H-M

CAUTION: THIS DEVICE COMPLIES WITH PART 15 OF THE FCC RULES. OPERATION IS SUBJECT TO THE FOLLOWING TWO CONDITIONS: (1) THIS DEVICE MAY NOT CAUSE HARMFUL INTERFERENCE, AND (2) THIS DEVICE MUST ACCEPT ANY INTERFERENCE RECEIVED, INCLUDING INTERFERENCE THAT MAY CAUSE UNDESIRABLE OPERATION.

CAUTION: CET ARTIFICE SE PLIE À LA PARTIE 15 DES RÈGLES DE FCC. L'OPÉRATION EST SOUMISE AUX DEUX CONDITIONS SUIVANTES: (1) CET ARTIFICE PEUT NE PAS PROVOQUER L'INTERFÉRENCE MALFAISANTE ET (2) CET ARTIFICE DOIT ACCEPTER N'IMPORTE QUELLE INTERFÉRENCE REÇUE, Y COMPRIS L'INTERFÉRENCE QUI PEUT PROVOQUER L'OPÉRATION INDESIRABLE.

PRECAUCIÓN: ESTE DISPOSITIVO CUMPLE CON LA PARTE 15 DE LAS REGLAS DE FCC. LA OPERACIÓN ES SUJETA A LAS DOS CONDICIONES SIGUIENTES: (1) ESTE DISPOSITIVO PUEDE NO CAUSAR LA INTERFERENCIA DAÑOSA, Y (2) ESTE DISPOSITIVO DEBE ACEPTAR CUALQUIER INTERFERENCIA RECIBIDA, INCLUSO LA INTERFERENCIA QUE PUEDA CAUSAR LA OPERACIÓN INDESEADA.

Greenworks Tools MADE IN CHINA / FABRIQUÉ EN CHINE / HECHO EN CHINA
 P.O. Box 1238, Mooresville, www.greenworkstools.com
 NC 28115 1-855-345-3934

SN: _____

12-01



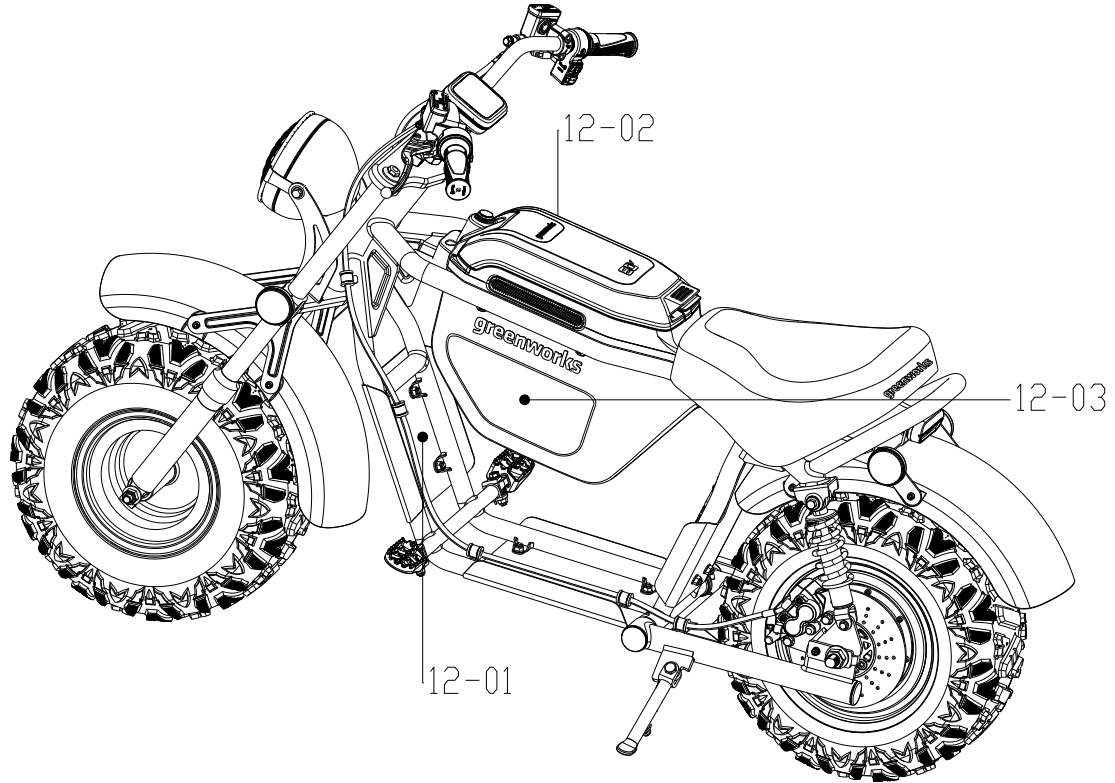
12-02



12-03

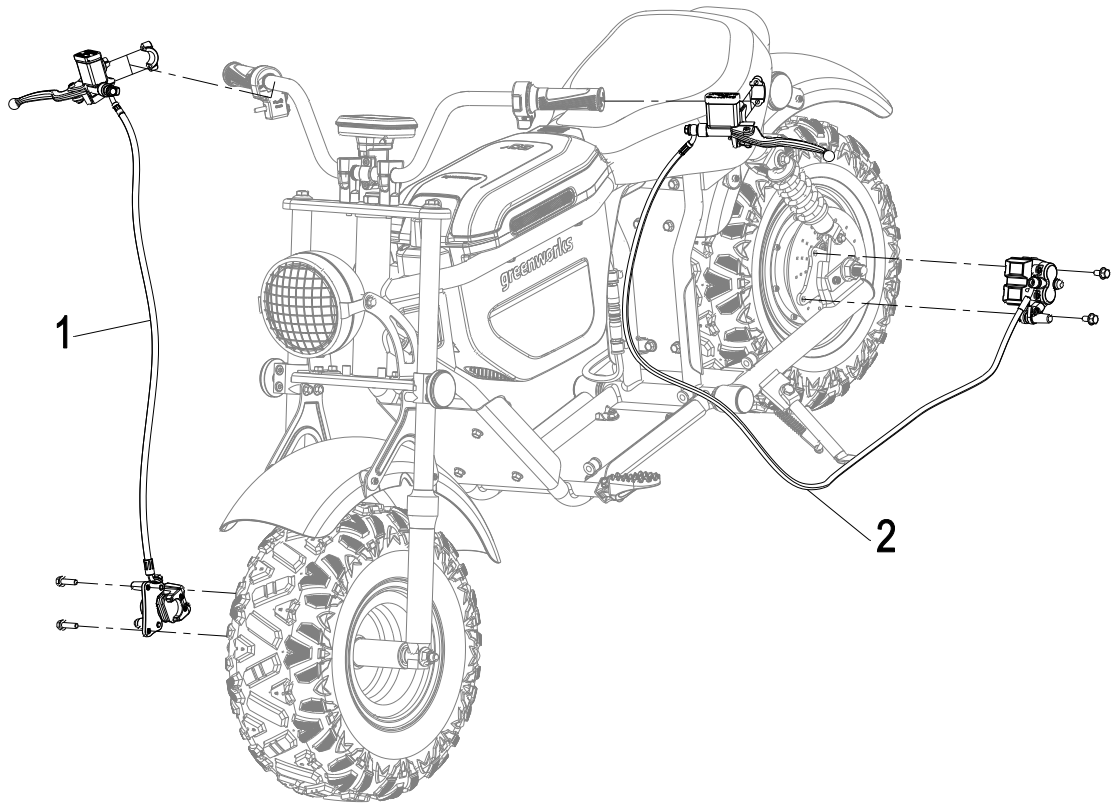
12-1

ITEM NO.	PAPT NO.	DESCRIPTION	QTY
12-01	R0207488-00	Nameplate Label	1
12-02	R0207490-00	60V Decorative Label (Right)	1
12-03	R0207489-00	60V Decorative Label (Left)	1



12-2

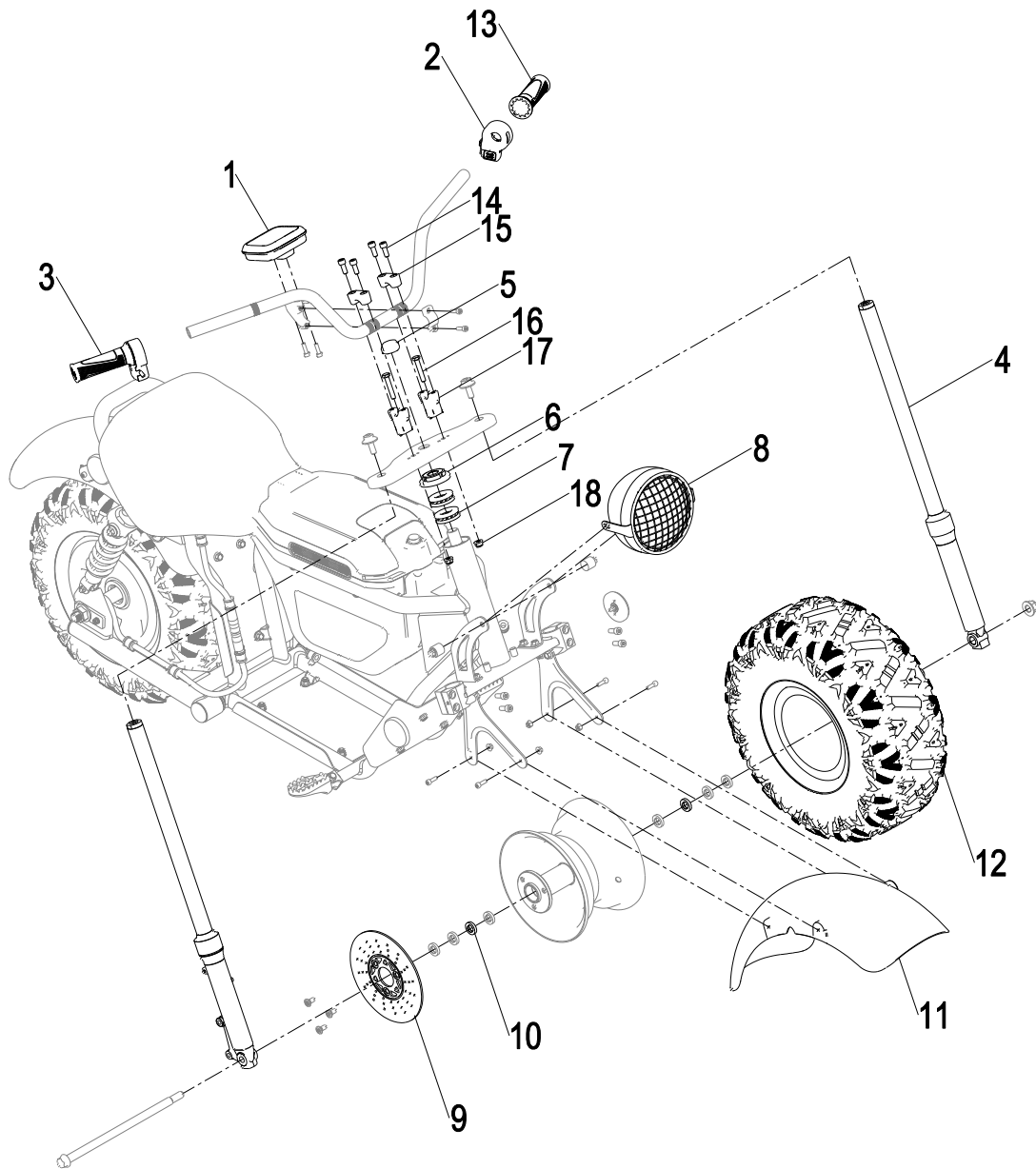
BRAKING COMPONENTS



ITEM NO.	PAPT NO.	DESCRIPTION	QTY
20-01	R0206900-00	Front Brake Assembly	1
20-02	R0206430-00	Rear Brake Assembly	1

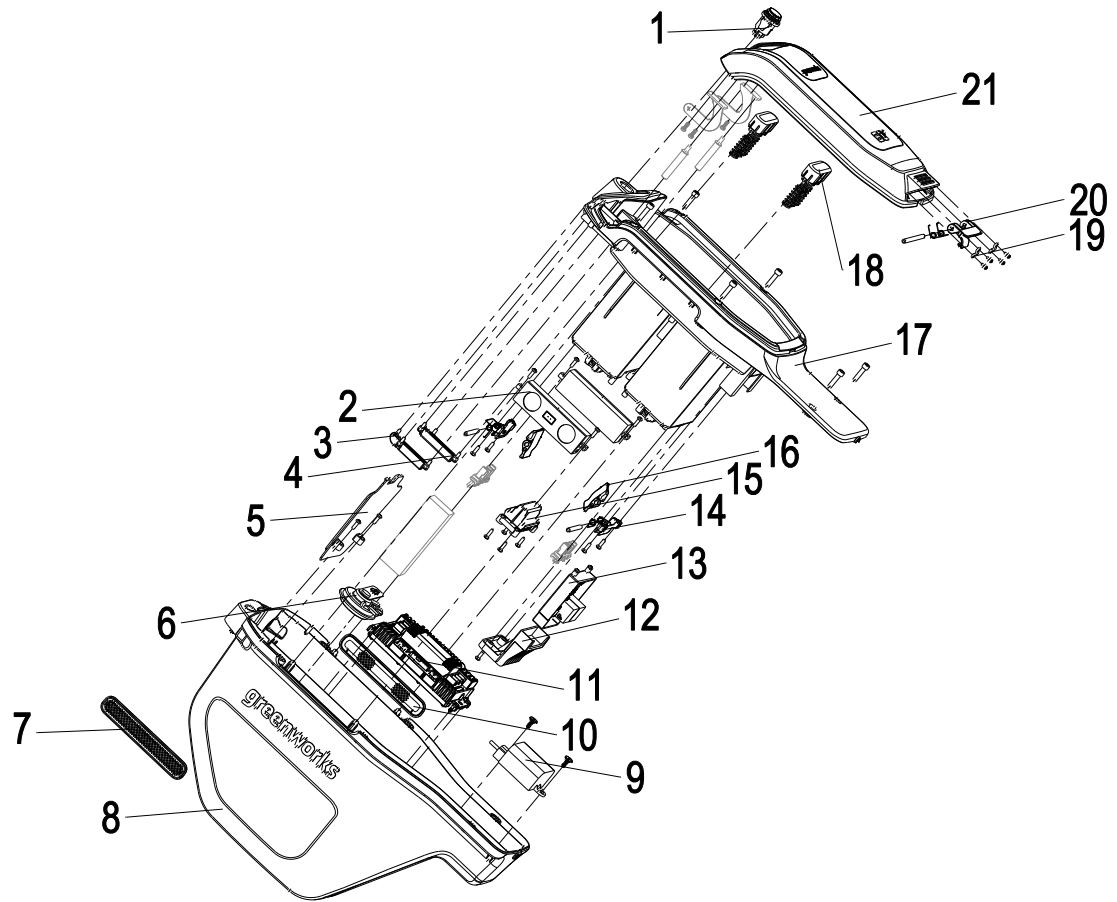
20-2

FRONT SUSPENSION



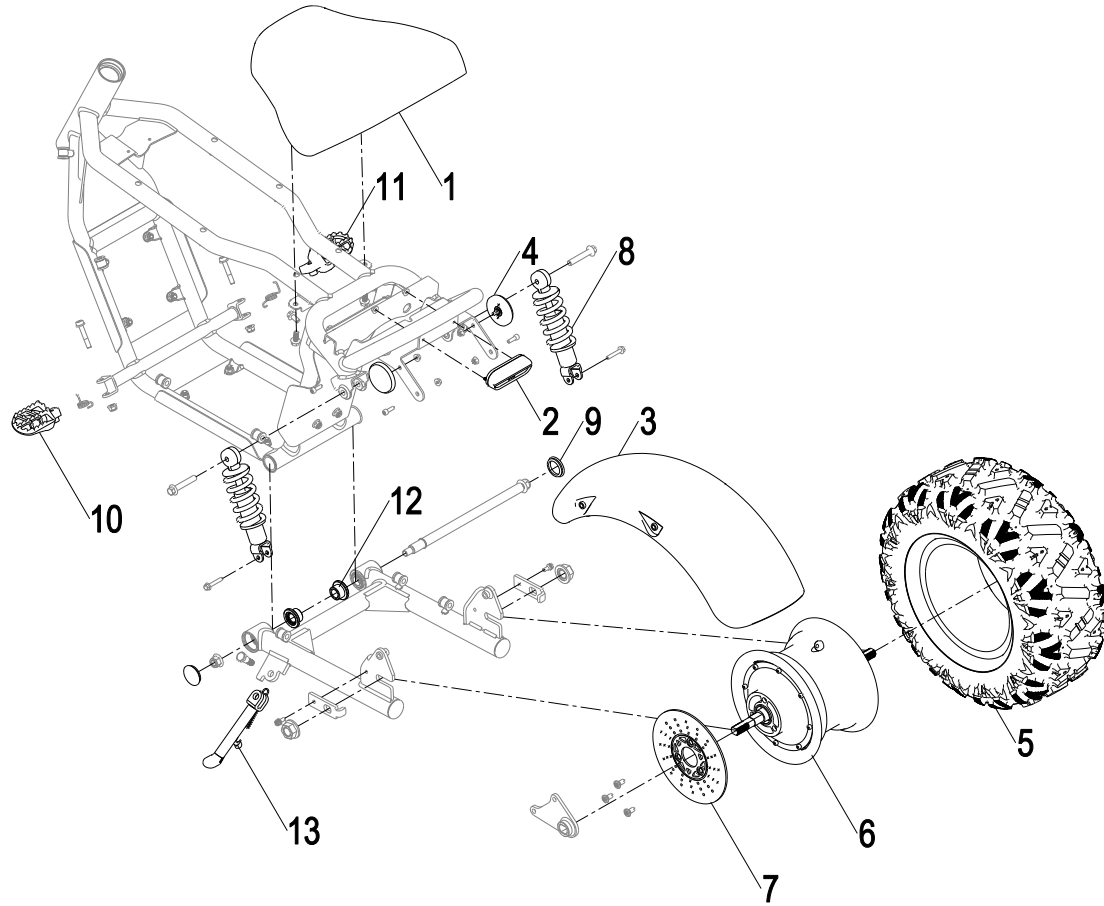
ITEM NO.	PAPT NO.	DESCRIPTION	QTY
30-01	R0206427-00	Led Dashboard	1
30-02	R0206431-00	Left Combination Switch	1
30-03	R0206432-00	Electronic Throttle	1
30-04	R0206419-00	Shock Absorber Front Assembly	1
30-05	R0206441-00	Round Nuts	1
30-06	R0206464-00	Round Nuts	1
30-07	R0206440-00	Tapered Roller Bearings	2
30-08	R0206423-00	Headlamp	1
30-09	R0206901-00	Front Brake Disc	1
30-10	R0100354-00	Deep Groove Ball Bearings	1
30-11	R0206442-00	Front Tyre	1
30-12	R0206838-00	Fender	1
30-13	R0208017-00	Left Handlebar Grip	1
30-14	R0208677-00	Hexagon Socket Head Cap Screws	4
30-15	R0208718-00	Connection Plate	2
30-16	R0208719-00	Hexagon Head Bolts-Full Thread	2
30-17	R0208720-00	Handle Fixed Seat	2
30-18	R0209085-00	Nut	2

ELECTRICAL COMPONENTS



ITEM NO.	PAPT NO.	DESCRIPTION	QTY
40-01	R0206435-00	Switch	1
40-02	R0206434-00	Speaker	2
40-03	R0206767-00	Left Coverplate	1
40-04	R0206768-00	Right Coverplate	1
40-05	R0206775-00	Baffle	1
40-06	R0206422-00	Electric Horn	1
40-07	R0206769-00	Decorative Plate	1
40-08	R0206763-00	Housing	1
40-09	R0206436-00	DC-DC Converters	1
40-10	R0206770-00	Decorative Plate	1
40-11	R0206428-00	Drive Controller	1
40-12	R0206778-00	PCB Base	1
40-13	R0206796-00	Power Board Pcba	1
40-14	R0206560-00	Release Button Shaft Retaining Plate	1
40-15	R0206795-00	Pressing Block	1
40-16	R0206736-00	Release Button	1
40-17	R0206764-00	Battery Pack Case	1
40-18	R0206566-00	Spring Base	1
40-19	R0206772-00	Release Button Shaft Retaining Plate	1
40-20	R0206771-00	Trigger	1
40-21	R0206765-00	Battery Pack Upper Cover	1

CHASSIS AND SUSPENSION



50-1

ITEM NO.	PAPT NO.	DESCRIPTION	QTY
50-01	R0206779-00	PCB Base	1
50-02	R0206424-00	Rear Light Assembly	1
50-03	R0206839-00	Fender	1
50-04	R0206421-00	Reflector	2
50-05	R0206443-00	Rear Tyre	1
50-06	R0206429-00	Wheel Hub Motor	1
50-07	R0206782-00	Rear Brake Disc	1
50-08	R0206420-00	Shock Absorber Rear Assembly	2
50-09	R0206776-00	Plug	1
50-10	R0206780-00	Pedal	1
50-11	R0206781-00	Pedal	1
50-12	R0206444-00	Rear Flat Fork Bushing	2
50-13	R0208721-00	Bicycle Kick	1

50-2