



200lbs. 3pt SPREADER

OWNER'S MANUAL



WARNING:

Carefully read and understand all **ASSEMBLY AND OPERATION INSTRUCTIONS** before operating. Failure to follow the safety rules and other basic safety precautions may result in serious personal injury.

Model # FTF-200S3PT

Thank you very much for choosing this product! For future reference, please complete the owner's record below:

Model: FTF-200S3PT Purchase Date: _____

Save the receipt, the warranty, and these instructions. It is important that you read the entire manual to become familiar with this product before you begin using it.

This product is designed for certain applications only. The manufacturer cannot be responsible for issues arising from modification. We strongly recommend that this product not be modified and/or used for any application other than that for which it was designed. If you have any questions relative to a particular application, DO NOT use the product until you have first contacted us to determine if it can, or should, be performed on the product.

For technical questions, please call **1-218-943-6296**.

INTENDED USE

Planter is designed for planting larger gardens, food plots or hobby farm.

TECHNICAL SPECIFICATIONS

Item	Description
Capacity	200LBS
Application	CAT 1 3pt Hitch
Function	With Potentiometer for easy control

GENERAL SAFETY RULES



WARNING: Read and understand all instructions. Failure to follow all instructions listed below may result in serious injury.



CAUTION: Do not allow persons to operate or assemble this Spreader until they have read this manual and have developed a thorough understanding of how the spreader works.



WARNING: The warnings, cautions, and instructions discussed in this instruction manual cannot cover all possible conditions or situations that could occur. It must be understood by the operator that common sense and caution are factors that cannot be built into this product, but must be supplied by the operator.

SAVE THESE INSTRUCTIONS

WORK AREA

- **Keep work area clean**, free of clutter, and well lit. Cluttered and dark work areas can cause accidents.
- **Keep children and bystanders** away while operating a spreader. Distractions can cause you to lose control, so visitors should remain at a safe distance from the work area.
- **Be alert of your surroundings.** Using a spreader in confined work areas may put you dangerously close to sharp tools and rotating parts.

PERSONAL SAFETY

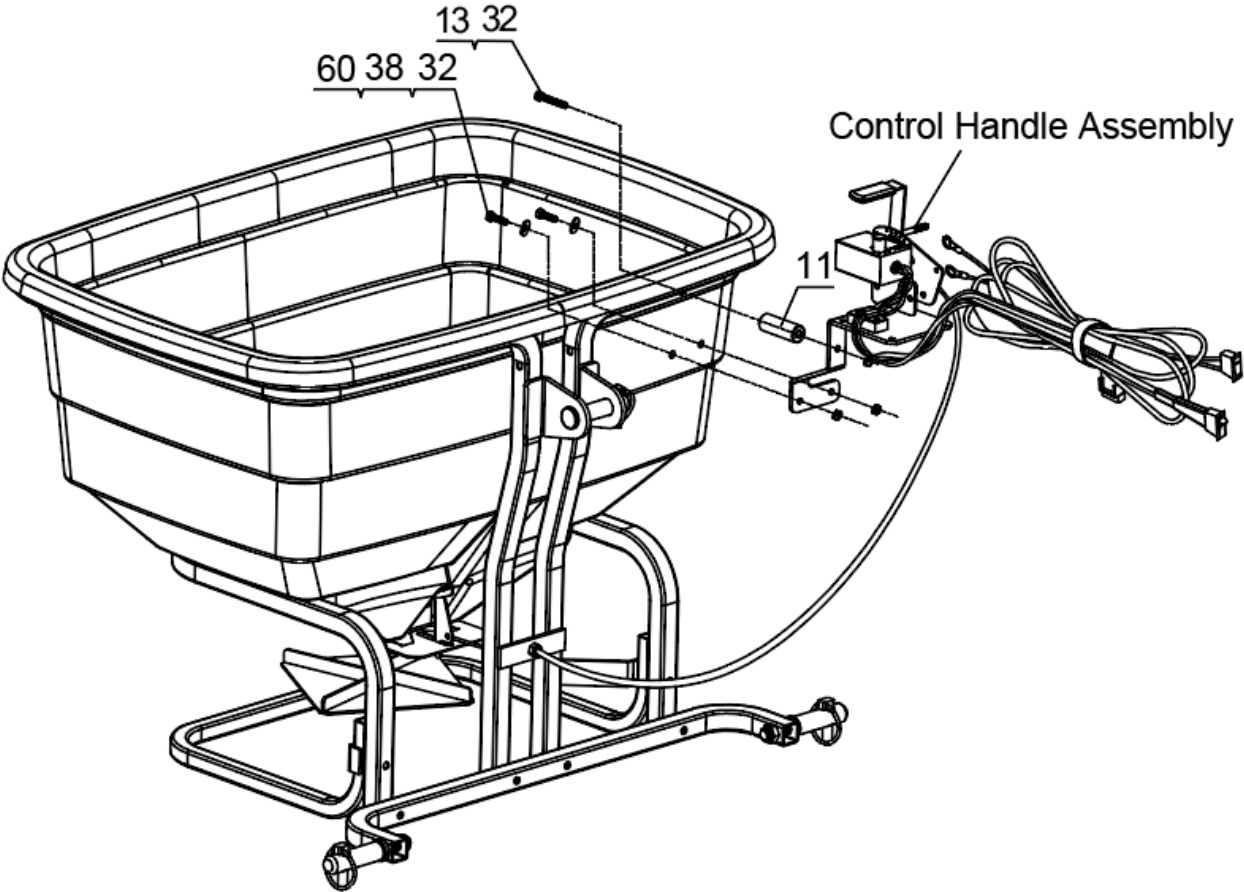
- **Stay alert**, watch what you are doing, and use common sense when using a spreader. Do not use a spreader while you are tired or under the influence of drugs, alcohol, or medication. A moment of inattention while operating a spreader may result in serious personal injury.
- **Dress properly.** Do not wear loose clothing, dangling objects, or jewelry. Keep your hair, clothing, and gloves away from moving parts. Loose clothes, jewelry, or long hair can be caught in moving parts.
- **Use safety apparel and equipment.** Use safety goggles or safety glasses with side shields that comply with current national standards or, when needed, a face shield. Use a dust mask if working in dusty work conditions. This applies to all persons in the work area. Also use non-skid, safety shoes, hard hats, heavy-duty gloves, dust collection systems, and hearing protection when appropriate.

SPREADER USE AND CARE

- **Do not modify the Spreader in any way.** Unauthorized modification may impair the function and/or safety and could affect the life of the equipment. There are specific applications for which the spreader was designed.
- **Always check for damaged or worn-out parts before using the Spreader.** Broken parts will affect the spreader operation. Replace or repair damaged or worn parts immediately.
- **Do not exceed the spreader load capacity.**
- **Distribute the load evenly.** Uneven loads may cause the spreader to tip, resulting in personal injury to the operator or others.
- **Use the spreader on flat and level surfaces** capable of supporting the spreader and its maximum load. Pulling or pushing a load on a slanted or uneven surface can result in loss of control.
- **Store idle spreader.** When the spreader is not in use, store it in a secure place out of the reach of children. Inspect it for good working condition prior to storage and before re-use.
- **Clean spreader after each use.**

ASSEMBLY INSTRUCTIONS

Thread #13 stainless steel hex bolt M6x60 through hopper, then through #11 intermediate spacer B, and control handle assembly, and finally preassemble with #32 stainless steel hex lock nut M6. Insert the #38 stainless steel hex bolt M6x16 through the #60 stainless steel large washer, then through the hopper, and the control handle assembly, and finally pre-tighten the #32 stainless steel hex lock nut M6, adjust the position and then tighten the nuts.



OPERATION



WARNING: Operator must read and understand all safety and warning information, operating instructions, maintenance and storage instructions before operating this equipment. Failure to properly operate and maintain the spreader could result in serious injury to the operator or bystanders.

- **DO NOT** at any time carry passengers sitting or standing on the spreader.
- **DO NOT** allow children to play on, stand upon or climb on the spreader.
- **DO NOT** exceed rated capacity of 200lb.
- Replace or repair damaged or worn parts immediately.
- To avoid personal injury and/or equipment damage **DO NOT EXCEED 5 MPH**.
- **ONLY** tow with recommended tractor.
- **ALWAYS** inspect the spreader before using to assure it is in good working condition.
- **ALWAYS** keep hands and feet clear from moving parts while operating the equipment.
- **DO NOT** use if the spreader is damaged or worn as this may cause injury to the operator or bystanders.
- **ALWAYS** make sure the spreader is secure and locked to the hitch of the approved tractor before operating.
- **NEVER** add material to the spreader unless it is attached to the tractor.

MAINTENANCE

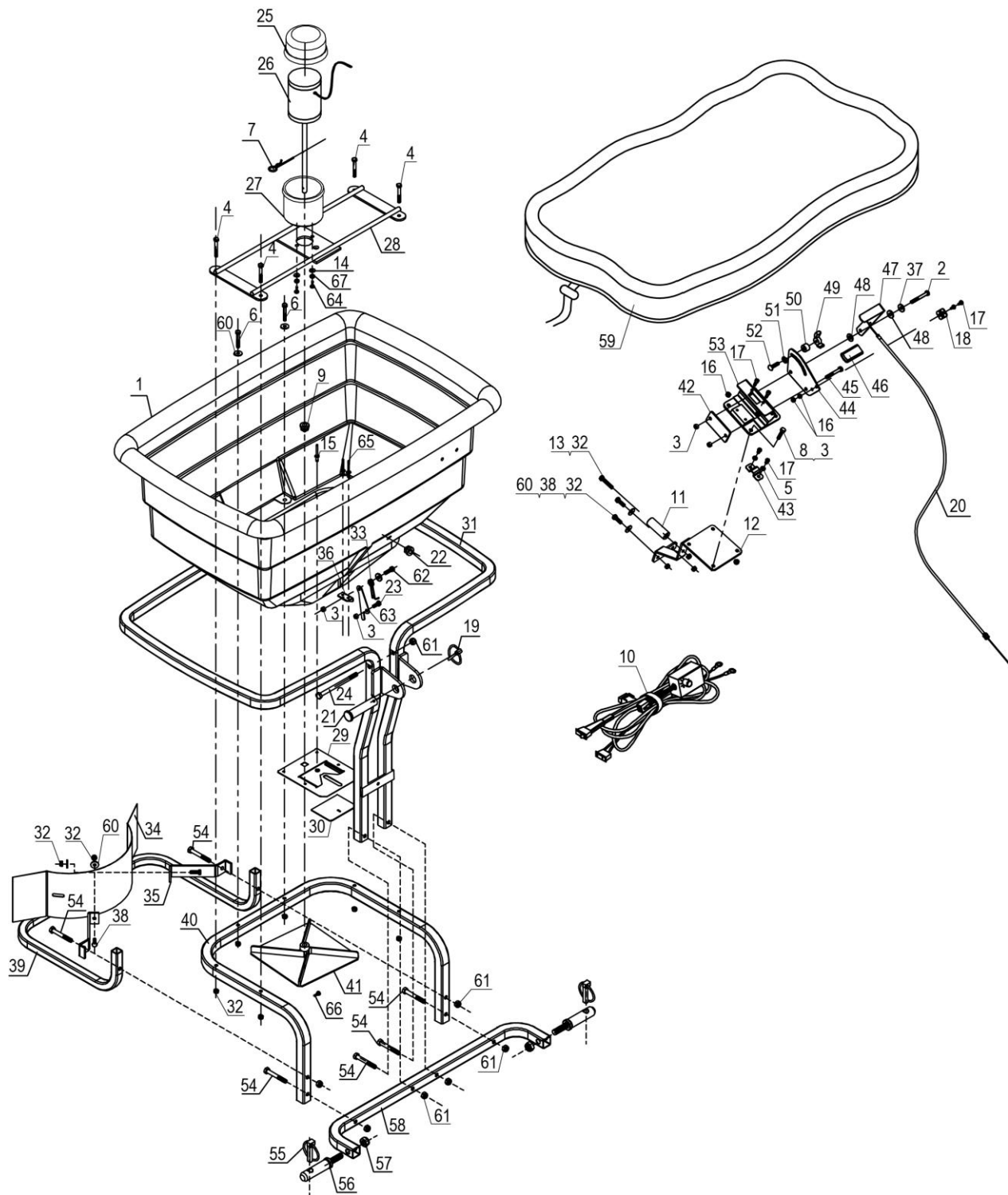
- **Maintain your spreader.** It is recommended that the general condition of any spreader be examined before it is used. Keep your spreader in good repair by adopting a program of conscientious repair and maintenance. If any abnormal vibrations or noise occurs, have the problem corrected before further use. Have necessary repairs made by qualified service personnel.
- After each use clean material out of hopper.
- Rinse/dry inside and outside of the spreader after each use.
- Periodically check all fasteners for tightness.
- Annually clean and lightly lubricate parts.
- Use a glossy enamel spray paint to touch up scratched or worn painted metal surfaces.
- Never exceed load capacity rating of 200lbs it will damage the spreader.

IMPORTANT:

If a part needs replacement, only use parts that meet the manufacturer's specifications.

Replacement parts that do not meet specifications may result in a safety hazard or poor operations.

DIAGRAM & PARTS LIST



Part#	Description	Qty.	Part#	Description	Qty.
1	200LB Hopper	1	35	Fixed Stand	2
2	M6x40 Hex Bolt	1	36	Torsion Spring Fixing Plate	1
3	M6 Hex Lock Nut	8	37	Large Washer	2
4	M6x45 Hex Bolt	4	38	M6x16 Hex Bolt	2
5	Ø5 Lock Washer	2	39	Guardrail Square Tube	1
6	M6x40 Hex Bolt	2	40	Hopper Mounting Pipe	1
7	R Pin	1	41	Impeller	1
8	M6x16 Hex Bolt	4	42	Fixed Plate	1
9	Swivel Axle Bushing	1	43	Line Clamp Plate A	1
10	Potentiometer Assembly	1	44	Gauge Plate	1
11	Intermediate Spacer B	1	45	M6x30 Hex Bolt	1
12	Gauge Seat Plate A	1	46	Handle Sleeve	1
13	M6x60 Hex Bolt	1	47	Control Handle	1
14	Ø6 Flat Washer	2	48	Nylon Pad	2
15	Open Blind Rivet	4	49	Wing Nut	1
16	M5 Hex Lock Nut	4	50	Bushing	1
17	M5x12 Cross Recessed Screw	6	51	External Tooth Lock Washer	1
18	Line Clamp Plate	1	52	Cup Head Square Neck Bolt	1
19	O Lock Pin	1	53	Gauge Plate Seat Plate Weldment	1
20	Pull Wire	1	54	M8x60 Hex Bolt	6
21	Safety Pin	1	55	O Lock Pin	2
22	Wire Clip	1	56	M12 Hanging Pin	2
23	Bolt	1	57	M12 Hex Lock Nut	2
24	M8x120 Hex Bolt	1	58	3PT Installation Pipe	1
25	Motor Cover	1	59	Rain Cover	1
26	Motor	1	60	Large Washer	6
27	Motor Bottom Cover	1	61	M8 Hex Lock Nut	7
28	Motor Mounting Plat Assembly	1	62	M6x20 Hex Bolt	1
29	Fixed Adjustment Plate	1	63	Fix Plate for Adjustable Rod	1
30	Active Adjustment Plate	1	64	M6x20 Hex Bolt	2
31	Fence Weldment	1	65	Open Blind Rivet	2
32	M6 Hex Lock Nut	11	66	M4x20 Cross Recessed Screw	1
33	Torsion Spring	1	67	Ø6 Lock Washer	2
34	Baffle	1			

This item is NOT returnable. Please call 218-943-6296 for replacement parts and technical assistance.

WARRANTY

One-year limited parts warranty.



TG
PO BOX 203
Miltona, MN 56354
Made in China