



KAHUNA WAGONS

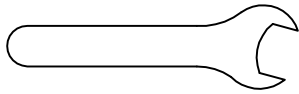
www.kahunawagons.com

Assembly Instructions Sidekick



TOOLS REQUIRED (NOT INCLUDED)

TOOLS AND HARDWARE (INCLUDED IN CONTENTS)



9/16" (1 EACH)

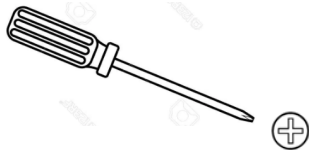


7/16" (2 EACH)

- OR -

USE TWO

ADJUSTABLE WRENCHES



PHILLIPS SCREWDRIVER #2
(1 EACH)



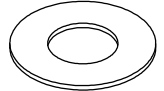
AA
3/8" X 1"
BUTTON HEAD
(8 EACH)



BB
3/8"
LOCK NUT
(8 EACH)

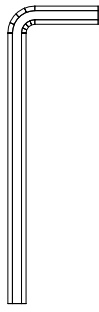


CC
3/8"
FLAT WASHER
(8 EACH)



DD
3/4"
WASHER
(8 EACH)

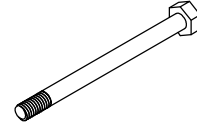
H732



7/32"
HEX KEY



EE
LYNCH PIN
(4 EACH)



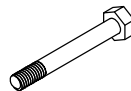
FF
1/4" X 2 1/4"
HEX BOLT
(1 EACH)



GG
1/4" FLAT
WASHER
(10 EACH)



HH
1/4"
LOCK NUT
(5 EACH)



JJ
1/4" X 1 3/4"
HEX BOLT
(4 EACH)

WAGON PARTS (INCLUDED IN CONTENTS)

A WAGON BED (1)

C REAR UNDER CARRIAGE (1)

E HANDLE (1)

B FRONT UNDER CARRIAGE/
TURNING MECHANISM (1)

D WHEEL (4)

F ROD RACK
ASSEMBLIES (2)

ASSEMBLY INSTRUCTIONS FOR - SIDEKICK

Do not fully tighten the hardware until all hardware is in place and the fit and operation of the wagon parts are adjusted correctly.

Special Note: Please closely adhere to tire inflation warnings, balloon tires should not exceed 12.5" in diameter or 3-4 PSI.

STEP 1 FIGURE 1

With the wagon bed "A" upside down, place the pre-assembled undercarriage/turning mechanism "B" over the four bolt holes that are the farthest from the end (this is the front of the wagon). Insert the 3/8" button bolts "AA" up through the pan and the holes in the undercarriage, then place washers "CC" and lock nut "BB" and loosely tighten with the 7/32" hex key provided and a 9/16" wrench (or adjustable wrench).

STEP 2 FIGURE 1

Repeat STEP 1 for rear undercarriage, part "C".

STEP 3 FIGURES 1 & 2

Slide one washer "DD" onto axle, place inflated wheel "D" onto axle, slide additional washer "DD" on the outside of the tire then insert the axle lynch pin "EE" and lock into place by folding down. Repeat this step for the three remaining wheels.

STEP 4 FIGURE 3

Turn over assembled wagon bed so that the wagon is now right side up. Make any adjustments to the fit and operation of the wagon parts and tighten the hardware.

STEP 5 FIGURE 3

Place handle "E" between the two receiver plates on the front undercarriage turning mechanism "B". (Be sure the handle is placed so the bend allows the handle to lean back over the wagon). Align the corresponding holes of "E" and the receiver plates and install hex bolt "FF", flat washers "GG" and lock nut "HH" using two 7/16" wrenches (or adjustable wrenches). Do not over tighten the bolt to allow the handle to pivot.

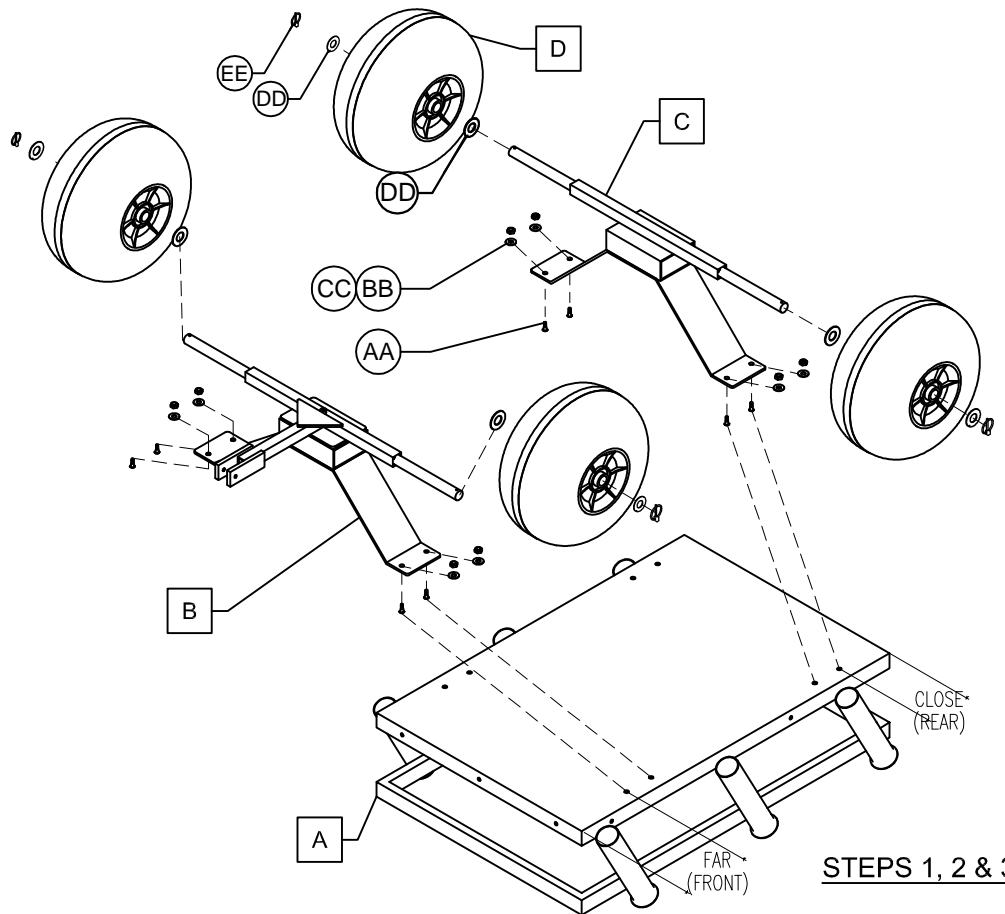
STEP 6 FIGURE 3

On the front and rear, install rod holders "F" as shown with hex bolts "JJ" going through the rod holder, then through the wagon wall framing. Add washer "GG" and lock nut "HH" with two 7/16" wrenches (or adjustable wrench).

STEP 7 FIGURE 3

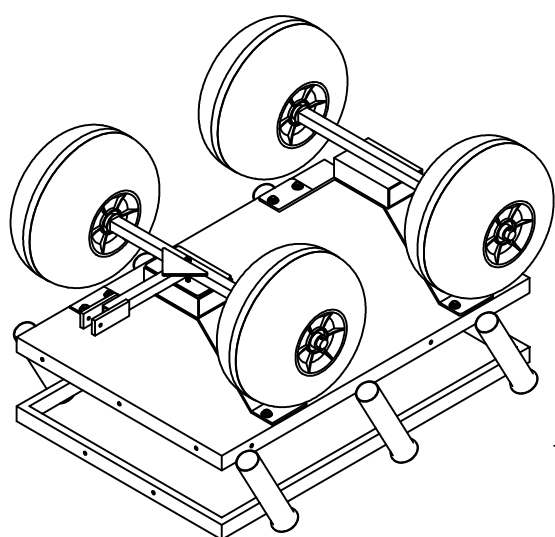
Tighten all remaining loose bolts on the wagon.

FINAL STEP: ENJOY USING YOUR NEW KAHUNA WAGON!!!



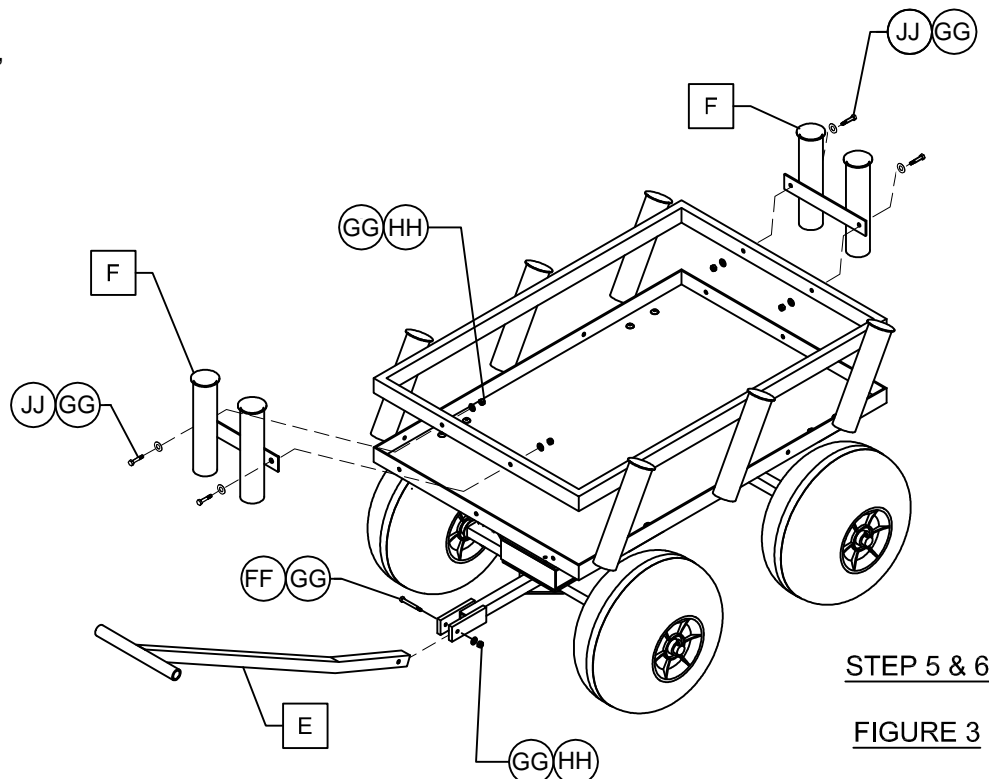
STEPS 1, 2 & 3

FIGURE 1



STEPS 1, 2 & 3
ASSEMBLED

FIGURE 2



STEP 5 & 6

FIGURE 3