

Diaphragm Pumps

Engineered for Excellence



7800 Series – 1.0 to 2.2 GPM Diaphragm Pump

Pump Type: Bypass, Demand, Bypass-Demand

Flow: Up to 2.2 GPM

Pressure: Up to 60 PSI

Valves: Viton

Diaphragm: Santoprene, Geolast

Ports: 3/8" FNPT, 5/8" Quick Attach, 3/4" Quick Attach

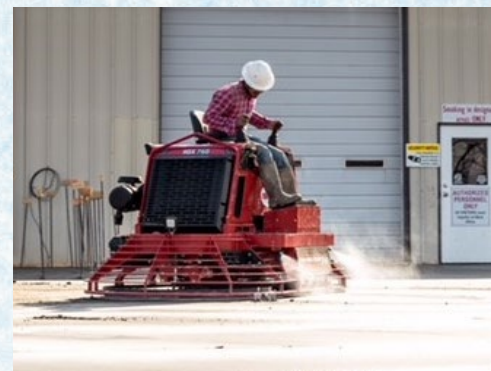
Power: 12V – Wire Leads with 2-pin molded connector, 115V AC corded plug

Weight: 6 lbs.

Packaging: Bulk Box, Retail Box

Shipping: 6 per carton, single

- 100% Factory tested
- NSF Approved (Santoprene only)
- High Torque Motor for superior flow at pressure
- Self-Priming
- Can be run dry
- Optional built in On/Off Switch available



DIAPHRAGM PUMPS

Performance Specifications

1.0 GPM Demand

PSI	GPM	AMPS
0	1.05	2.4
10	0.95	2.9
20	0.9	3.4
30	0.85	4.1
40	0.8	4.3
50	0.75	4.8

2.0 GPM Demand

PSI	GPM	AMPS
0	1.7	4.5
10	1.7	4.5
20	1.6	5.2
30	1.55	5.9
40	1.5	6.7
50	1.45	8

2.2 GPM Demand

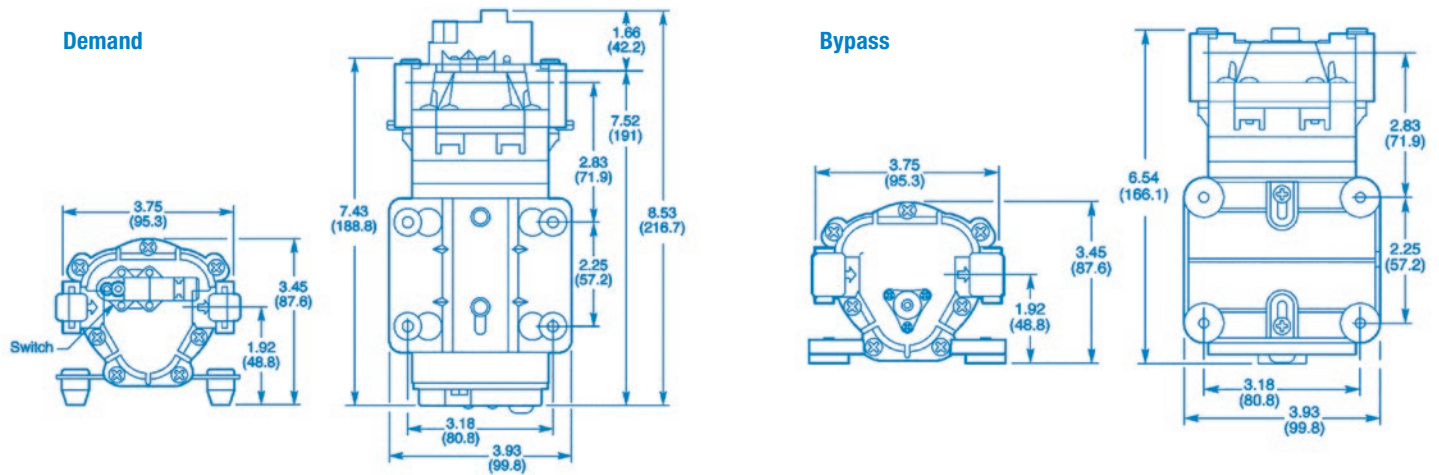
PSI	GPM	AMPS
0	2.2	4.5
10	2.2	4.7
20	2.1	6.1
30	1.9	6.9
40	1.8	7.2
50	1.65	8.1

1.0 GPM Bypass

PSI	GPM	AMPS
0	1	2.9
10	1	3
20	0.98	3.4
30	0.92	4
40	0.9	4.4
50	0.85	4.9

2.0 GPM Bypass

PSI	GPM	AMPS
0	1.7	3.2
10	1.65	3.3
20	1.6	3.9
30	1.5	4.5
40	1.48	5.4
50	1.45	6.4



Engineered for Excellence

"We are committed to succeeding in today's increasingly challenging marketplace by responding to each varied and dynamic individual customer requirement with an exclusive and custom tailored solution."