

**pure**  
enrichment

**5** YEAR  
WARRANTY

# PURECLEAN XL

## ROLLING STEAM CLEANER



USER MANUAL  
MODEL: PEROLSTM



## TABLE OF CONTENTS

WARNINGS AND PRECAUTIONS .....	4-6
INTRODUCTION & PRODUCT SPECIFICATIONS .....	6
PRODUCT DIAGRAM.....	7
PRODUCT COMPONENTS.....	8-9
ASSEMBLING STEAM ACCESSORIES.....	9-13
FILLING THE BOILER.....	13-14
USING PURESTEAM XL.....	15
STORAGE & CARE.....	16
TROUBLESHOOTING.....	18-19
WARRANTY & PRODUCT REGISTRATION.....	20

## WARNINGS AND PRECAUTIONS



**WARNING: To reduce the risk of fire, electrical shock, or injury, the following basic safety precautions should always be followed when using an electrical appliance.**

1. Use PureClean XL only for its intended purpose as indicated in this manual.
2. If an extension cord is necessary, use a properly rated cord (15 ampere, 14 gauge). Be careful to place the extension cord where it is least likely to be damaged or tripped over during use.
3. Before plugging the power cord into an electrical outlet, make sure that all of the electrical information on the rating label agrees with your power supply.
4. To reduce the likelihood of a circuit overload, DO NOT operate another high wattage appliance on the same circuit as this product.
5. Never yank the power cord to disconnect it from the outlet; instead, grasp plug and pull to disconnect.
6. DO NOT operate the product with a damaged power cord or if the unit has been dropped or damaged.
7. To avoid the risk of electrical shock, do not disassemble the product. Doing so will void the warranty. Contact Pure Enrichment at [help@pureenrichment.com](mailto:help@pureenrichment.com) if the product has any issues that require repair or replacement.
8. DO NOT leave the product unattended while plugged in. Close supervision is required when using PureClean XL near children, pets, or plants.
9. This product is not intended for use by individuals (including children) with reduced physical, sensory or mental capabilities, or lack of experience and knowledge, unless they have been given supervision or instruction concerning the use of the product by a person responsible for their safety.
10. Do not use the product where aerosol-based products are being used or where oxygen is being administered.
11. This product is only intended to be used with the provided accessories. Using other types of attachments could damage the product or cause injury to the user.

## WARNINGS AND PRECAUTIONS

12. Always turn this product off and unplug the power cord before filling the water tank.
13. Only use water to fill the water tank. Other cleaning agents could damage the product or cause injury. Distilled or demineralized water is recommended to reduce the build-up of mineral deposits.
14. DO NOT fill the water tank with more than 1.5L of water.
15. To avoid burns from escaping steam when refilling the water tank, be sure to do the following before removing the water tank cap:
  - Always allow the product to cool for 20 minutes.
  - Press and hold the steam button to release ALL remaining steam.
16. To reduce the risk of contact with hot water emitting from the steam nozzle, check the product before each use by positioning it away from the body and turning it on.
17. Burns can occur from touching the product's hot metal parts, hot water, or steam. DO NOT touch the main nozzle or attempt to connect accessories while using the product.
18. DO NOT touch the bottom of the mop head or attempt to attach a microfiber pad by hand while using the product.
19. Use caution when turning the product upside-down—there may be hot water in the water tank.
20. Use caution when using the product on stairs or uneven areas.
21. Steaming unsealed hardwood or unglazed ceramic surfaces is not advised. It may result in warping or damage to the surface.
22. Steam may remove the sheen from surfaces treated with wax.
23. When steam mopping, never leave the product resting in one spot on any surface for any period of time—prolonged exposure to heat and moisture may damage floor surfaces.
24. DO NOT allow the power cord to touch hot surfaces during use.
25. Bundle the power cord loosely when storing.
26. Always allow PureClean XL to cool completely (at least 20 minutes) and empty the water tank before storing. DO NOT store the product with a damp microfiber pad still attached.

## WARNINGS AND PRECAUTIONS

To reduce the risk of electrical shock, this product has a three-pronged plug. The plug will fit in a polarized wall outlet only one way. If the plug does not fit fully in the outlet, contact a licensed electrician to install a proper outlet. DO NOT attempt to modify the plug or defeat this safety feature.

**SAVE THESE INSTRUCTIONS!  
FOR HOUSEHOLD USE ONLY**

## PRODUCT SPECIFICATIONS

Product Dimensions:	15.7" x 11" x 13"
Extension Wand Length:	3ft
Power:	AC: 120V, 60Hz, 1500W
Boiler Capacity:	1.5L (1500ml)
Heating Time:	8 min (approx.)
Continuous Steam Time:	45 min (approx.)
Steam Output:	1.2oz/min
Weight:	9.3lbs
Power Cord Length:	16ft
Amperage:	12.5A

## INTRODUCTION

Thank you for purchasing the PureClean XL Rolling Steam Cleaner by Pure Enrichment. We designed this heavy-duty product to safely and effectively deep clean your entire home including:

- Windows & Draperies
- Upholstered Furniture
- Clothing
- Mattresses
- Countertops
- Baseboards & Doorways
- Carpet, Tile & Laminate Flooring
- Vehicles and Car Seats
- Bicycles and Motorcycles
- Outdoor Grills
- Toys

## PRODUCT DIAGRAM

The following features and accessories are included with your PureClean XL. Carefully inspect the packing material for all parts listed below. To obtain possible missing parts, contact Pure Enrichment at [help@pureenrichment.com](mailto:help@pureenrichment.com).



1. Lighted On/Off Switch
2. Boiler & Safety Cap
3. Back Cord Wrap
4. Handle
5. Steam Lock Switch
6. Steam Button
7. Carrying Handle
8. Main Nozzle
9. Steam Hose
10. Steam Jet Nozzle
11. Extension Wands
12. Mop Head
13. Microfiber Pads
14. Water Funnel
15. Measuring Cup
16. Squeegee
17. Triangle Brush
18. Nylon Utility Brushes
19. Brass Utility Brush
20. Scrub Pad

## PRODUCT COMPONENTS

- The Lighted On/Off Switch (1) turns the product on and off and illuminates when the product is powered on.
- The Boiler (2) is the internal tank where water is stored and heated. It is accessed through the Safety Cap. There must be a sufficient amount of water in the boiler in order for the product to function properly.
- The Back Cord Wrap (3) is designed to hold the power cord when not in use.
- The Handle (4) is designed to stay cool while providing the optimum amount of safety and user comfort.
- The Steam Lock Switch (5) is pushed forward to lock the Steam Button down and provide continuous steam without continuously pressing the Steam Button.
- The Steam Button (6) provides full steam-on-demand control, releasing hot, penetrating steam from the Main Nozzle when pressed.
- The Carrying Handle (7) functions as a convenient holder for the Main Nozzle, and is designed for carrying the unit up stairs and over obstacles.
- The Main Nozzle (8) emits a powerful flow of steam when the Steam Button is pressed.
- The Steam Hose (9) safely channels the flow of steam from the boiler to the Main Nozzle.
- The Steam Jet Nozzle (10) focuses the flow of steam from the Main Nozzle, and serves as the base to which the Utility Brushes and Scrub Pad connect.
- The Extension Wands (11) connect to the Main Nozzle and are used with the mop head or for high or hard-to-reach places.
- The Mop Head (12) connects to the Extension Wands, and is designed for steam cleaning a variety of hard floor surfaces.
- The Microfiber Pads (13) attach to the Mop Head and are designed for removing scuffs and stains from hard floors. The Microfiber Pads are reusable and machine washable.
- The Water Funnel (14) and the Measuring Cup (15) are provided to make filling the boiler easier. The tank can hold up to 1.5L of water or 3 full Measuring Cups.

## PRODUCT COMPONENTS

- The Squeegee (16) connects to either the Main Nozzle or Extension Wands and can be used to clean mirrors, windows and other smooth glass surfaces.
- The Triangle Brush (17) connects to the Main Nozzle or Extension Wands and is designed for cleaning corners and other difficult angles.
- The assorted Nylon Utility Brushes (18) connect to the Steam Jet Nozzle, providing extra scrubbing power for removing exceptionally tough dirt and stains.
- The Brass Utility Brush (19) connects to the Steam Jet Nozzle and is designed for removing tough stuck-on grease and grime from durable surfaces such as ovens and grills.
- The Scrub Pad (20) connects to the Steam Jet Nozzle and is designed to scrub tough dirt and scuffs from surfaces.

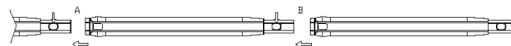
## ASSEMBLING STEAM ACCESSORIES



**WARNING:** DO NOT try to reconnect accessories while the product is emitting steam to avoid burning the skin.

### Extension Wands

1. Select one of the Extension Wands. Insert end (A) of Wand into Main Nozzle (B). Align hole in Wand with gray lock/release button on Nozzle.
2. Press down on gray lock/release button. While continuing to hold button down, slide Extension Wand onto Main Nozzle until button snaps through hole on Wand.
3. Slide remaining Extension Wand (C) onto end of assembled Wand (D), this time lining up rectangular hole of remaining Wand with gray lock/release button of first Wand. Press and hold button, and firmly push second Wand onto end of first Wand until button snaps through hole. Both Extension Wands should now be connected to the Main Nozzle.

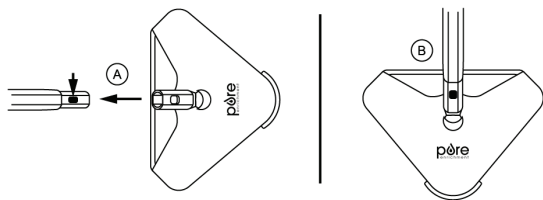


## ASSEMBLING STEAM ACCESSORIES

### Mop Head

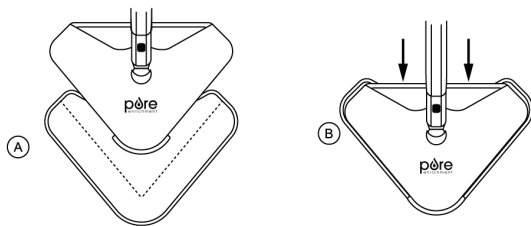
1. Align Mop Head with open end of Extension Wand, so that rectangular hole in Mop Head aligns with gray lock/release button on Wand.
2. Press down on gray lock/release button. While continuing to hold button down, slide Mop Head onto Extension Wand (See figure below). Press on firmly until button snaps through hole.

**NOTE:** DO NOT use excessive force when mopping or using Extension Wands as this may cause the Wands to break.



### Microfiber Pads

1. Lay one Microfiber Pad on flat surface, with two fastener strips facing upward.
2. Align Mop Head with Microfiber Pad. Make sure Mop Head is oriented with Pad as shown, and centered as best as possible.
3. Press Mop Head firmly down onto Microfiber Pad. Fastener strips will adhere to Pad Grips on underside of Mop Head. Pad should now be attached and ready for use.



## ASSEMBLING STEAM ACCESSORIES

### Microfiber Pads (Cont'd)

**CAUTION:** Use care when handling a recently used Microfiber Pad, as it may still be hot.

**NOTE:** Microfiber Pads are machine washable. To avoid picking up lint, washing separately from other fabrics is recommended. Only use liquid detergent. Avoid using any fabric softeners or bleach.

Air drying is recommended; machine drying on a low heat or air dry setting is acceptable as well.

**IMPORTANT: DO NOT use on unsealed hardwood or unglazed ceramic surfaces. Surfaces that are not properly sealed may be warped or damaged by exposure to heat and moisture.**

- Care should also be taken when steaming sealed hardwood floors, as prolonged exposure to steam in a single spot may cause damage and discoloration. To avoid this, keep the Mop Head in constant motion on these surfaces.
- Steam may remove the sheen from some floors that have been treated with wax.
- Extremely rough textured floors may tear or damage Microfiber Pads.

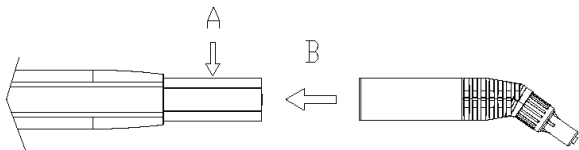
### Steam Jet Nozzle / Squeegee / Triangle Brush

1. Select one of the three accessories (Steam Jet Nozzle, Squeegee or Triangle Brush—Steam Jet Nozzle shown as example in figure on Page 12), and align (A) end of accessory with Main Nozzle (B). Align hole in accessory with gray lock/release button on Nozzle.
2. Press down on gray lock/release button. While continuing to hold button down, slide accessory onto Nozzle until button snaps through rectangular hole.

## ASSEMBLING STEAM ACCESSORIES

### Steam Jet Nozzle / Squeegee / Triangle Brush (Cont'd)

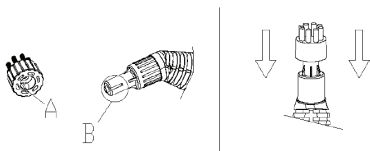
**NOTE:** The Steam Jet Nozzle, Squeegee and Triangle Brush can be connected to the end of an Extension Wand for reaching high or difficult spots. Connect the Extension Wand (or Wands) as outlined on Page 9, then connect your desired accessory to the Wand in the same way as you would normally connect to the Main Nozzle.



### Utility Brushes

**NOTE:** Utility Brushes connect to the Steam Jet Nozzle, not the Main Nozzle.

1. Align guide tab on inside of Utility Brush (A) with groove on bottom of Steam Jet Nozzle tip (B).
2. Firmly press Utility Brush onto tip of Steam Jet Nozzle. Press it on as far as possible to prevent steam leakage.
3. To remove Utility Brush, simply grip it firmly and pull it off Steam Jet Nozzle.



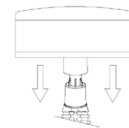
### Scrub Pad

**NOTE:** Scrub Pad connects to the Steam Jet Nozzle, not the Main Nozzle.

## ASSEMBLING STEAM ACCESSORIES

### Scrub Pad (Cont'd)

1. Place Scrub Pad over tip of Steam Jet Nozzle, and firmly press it on to Steam Jet Nozzle as far as possible. This will help to prevent steam leakage.
2. To remove Scrub Pad, simply grip it firmly and pull it off of Steam Jet Nozzle.



## ACCESSORY RECOMMENDATIONS

<b>Nylon Utility Brush</b>	Ovens, stove tops, faucet fixtures, tile, grout, refrigerators, microwaves, showers, bathtubs, doorknobs, waste can, sports equipment, toys, and changing tables.
<b>Steam Jet Nozzle</b>	Removing dirt, grease, and grime from cracks and crevices. Defrosting freezers. Dirt and grass in grooves of golf clubs. Dirt and grime in tread of running shoes. Cleaning intricate precious metal and stone jewelry (not pearls or costume jewelry).
<b>Microfiber Pad</b>	Vinyl, stone, slate, marble, sealed hardwood, glazed ceramic tile, granite, stained concrete, grout, linoleum, laminate, bamboo, and other delicate floors.
<b>Squeegee</b>	Bugs on windshield. Removing soap scum and grime. Shower glass, doors, mirrors, and glass.
<b>Triangle Brush</b>	Hard to reach corners on counter tops, bathtubs, and floors.
<b>Scrub Pad</b>	Stone, slate, glazed ceramic tile, and grout.

## FILLING THE BOILER

1. Place PureClean XL on a flat, level surface.
2. Make sure it is turned off and unplugged from electrical outlet.

If the product has been in use, always use the following safety precautions before removing the safety cap to add water to the boiler:

- Allow unit to cool for 20 minutes.
- Press and hold Steam Button to release ALL remaining steam.

## FILLING THE BOILER



**WARNING:** Failure to follow these precautions may result in burns from escaping steam when opening the boiler cap.

3. Push down on the safety cap and turn counterclockwise to unscrew and remove the cap.
4. Drain any water remaining inside the boiler.

**NOTE:** The boiler should be emptied after each use – this will help minimize mineral build-up and prevent overfilling.

5. Fill measuring cup to maximum fill line (500 ml.) with water.

**NOTE:** In order to significantly reduce mineral build-up and prolong the life of your PureClean XL, use of distilled or de-mineralized water in the unit is highly recommended.

6. Insert water funnel into fill hole and carefully pour water from measuring cup into the boiler.

**WARNING:** Caution should always be used when pouring water into the boiler. DO NOT look directly down into fill hole when filling.

7. To tackle bigger steam jobs, repeat steps 5 & 6 up to a max of 1500ml of water. See the chart below to determine the amount of water you need to steam up to 45 minutes.

Amount of Water	Duration of Steam
500ml	Approximately 15 minutes
1000ml	Approximately 30 minutes
1500ml	Approximately 45 minutes

**NOTE:** Please allow adequate heat up time (at least 8 minutes for 500ml) for water to evaporate and release continuous steam.

8. Replace the safety cap by screwing it on and pressing down while turning it clockwise until it is sealed.

## USING PureSteam XL

**NOTE:** Be sure that the boiler has been filled and that all desired accessories are connected before following these steps.

1. Plug the power cord into an electrical outlet.
2. Turn the power on. The On/Off Lighted Switch will immediately illuminate, indicating that the boiler is heating.
3. The water in the boiler will be ready for steam cleaning within 3 to 8 minutes (depending on how much water is in the boiler).
4. Point the Main Nozzle (and any connected accessory) towards the surface you desire to steam, and press the Steam Button. To sanitize surfaces, point the Main Nozzle, press the Steam Button and hold approximately 1/2 inch from the surface for at least 5 seconds. This will ensure you have killed germs and bacteria.

**CAUTION:** Always be sure that the Main Nozzle and any accessory are pointed in a safe direction (away from yourself, other people, pets, and plants) before pressing the Steam Button.

5. Keep the Steam Button pressed for a continuous flow of steam. You may also slide the Steam Lock Switch forward while pressing the Steam Button to lock it down. This will allow a continuous flow of steam without need of holding the Button down manually.
6. Using a back-and-forth motion over the area you are steaming will further enhance the cleaning process. Wipe steamed areas with a clean cloth to remove loosened dirt and grime. Wiping the area while it is still wet is recommended, but use caution when wiping surfaces such as metal that may still be hot.
7. Once steaming tasks are complete, turn the unit off and unplug. Follow steps under Proper Storage procedure below.



## STEAM MOPPING

It is recommended to sweep or vacuum hard floors before mopping.

1. Refer to the table on Page 13 for a listing of hard floor surfaces that are recommended for cleaning with PureClean XL.
2. For best results, use a continuous back-and-forth motion over floor surface, pushing the Mop Head away and pulling it back towards you. Work your way backwards over the floor in order to avoid walking over freshly mopped areas.

**NOTE:** To avoid warping or damage caused by heat and moisture, DO NOT use on unsealed hardwood or unglazed ceramic surfaces. Steam may remove the sheen from some wax floors.

3. The Microfiber Pad will absorb dirt and moisture during mopping. However, when you are finished you may find some residual moisture has been left behind. In this case, it is recommended to allow floor time to air-dry. A fan may be directed towards mopped area to facilitate drying.

## STORAGE & CARE

### Proper Storage

Preparing your PureClean XL for storage is quick and simple. When you have finished your steaming tasks, follow the steps listed below.

1. Turn the product off and unplug the power cord.
2. Press and hold Steam Button to release all remaining steam.
3. Allow unit to completely cool (at least 30 minutes).
4. Remove all accessories from unit.
5. Remove the boiler safety cap.
6. Drain any remaining water from the boiler into a sink or tub—this will help to minimize mineral build-up and prevent over-filling during your next use. Replace the boiler safety cap.
7. Store PureClean XL and accessories in a cool, dry location.

## MINERAL BUILD-UP

A common maintenance need for steam appliances is the removal of build-up caused by high mineral content in many municipal water supplies. This mineral build-up may limit the effectiveness and reduce the life of your PureClean XL.

The best way to minimize mineral build-up is to use distilled or de-mineralized water when using your PureClean XL. If you are unable to use distilled water, it is recommended that the following procedure be followed monthly to remove any mineral build-up:

1. Turn the product off and unplug the power cord.
2. Allow the boiler to completely cool (at least 30 minutes).
3. Press and hold Steam Button to release all remaining steam.
4. Remove all accessories from the product.
5. Remove the boiler safety cap.
6. Drain water from the boiler into a sink or tub.
7. Using the Measuring Cup, make a mixture of 250ml vinegar and 250ml of water.
8. Using the Funnel, slowly pour the water-vinegar solution into the boiler.
9. Allow to stand for 40 minutes.
10. Drain the water-vinegar solution from the boiler.
11. Rinse the boiler with fresh water, drain, and repeat until vinegar odor dissipates.
12. Replace the boiler safety cap.

## TROUBLESHOOTING

Problem	Probable Cause	Solution
<b>Unit fails to heat up. Lighted On/Off Switch DOES NOT illuminate when the product is on.</b>	Unit is not plugged in.	Plug power cord into electrical outlet.
	Household circuit breaker / ground fault interrupter has tripped or blown a fuse.	Reset circuit breaker / ground fault interrupter, or replace fuse. If you need assistance, contact a licensed electrician.
	Unit is damaged or otherwise in need of repair.	Immediately cease usage and unplug. Contact Pure Enrichment.
<b>Unit fails to heat up. Lighted On/Off Switch DOES illuminate when the product is on.</b>	Boiler is empty.	Refer to Filling the Boiler procedure on Page 13-14.
	Mineral build-up in unit.	Refer to Mineral Build-up section on Page 17 for cleaning procedure.
	Unit is damaged or otherwise in need of repair.	Immediately cease usage and unplug. Contact Pure Enrichment.
<b>Steam output is weak or intermittent.</b>	Water level in Boiler is running low.	Refer to Filling the Boiler procedure on Page 13-14.
	Mineral build-up in unit.	Refer to Mineral Build-up section on Page 17 for cleaning procedure.

## TROUBLESHOOTING

Problem	Probable Cause	Solution
<b>Excessive amount of water in steam. NOTE: Unit produces wet steam – it is normal for steam to contain some amount of water.</b>	Water condensation in Steam Hose.	Point nozzle towards sink, tub or ground and shake while pressing Steam Button. Continue until excess water is released.
	Boiler has been overfilled.	Filling the Boiler with more than 1500 ml of water interferes with steam production, resulting in water condensation in steam. Always use included Measuring Cup to fill unit with correct amount of water. (see Page 14 for details)
	Unit has not heated to full operating temperature.	Wait until Steam Ready Light turns off to begin steaming.
<b>Accessories do not stay firmly connected to Main Nozzle.</b>	Accessories not properly installed.	Check to make sure that accessories are properly connected, per procedures on Pages 10-13.
<b>Floor surfaces appear cloudy or streaky after steaming.</b>	Microfiber Pad is dirty.	Replace Microfiber Pad with a clean one.
	Hard water residue on floor.	Switch to distilled or de-mineralized water.

## **WARRANTY**

PureClean XL comes with an industry-leading 5 Year Warranty that begins on the date of purchase.

The warranty applies to the rolling steam cleaner and labor relating thereto. The warranty does not apply to damage resulting from failure to follow the operating instructions, accidents, abuse, alterations or disassembly by unauthorized individuals.

## **PRODUCT REGISTRATION**

To ensure your full warranty and to receive product updates and streamlined customer support, remember to register your product at:

[www.pureenrichment.com](http://www.pureenrichment.com)

## **ARE YOU 100% SATISFIED?**

If you have product questions or concerns don't hesitate to contact us directly at:

[help@pureenrichment.com](mailto:help@pureenrichment.com)

Pure Enrichment has an award-winning warranty, exchange, and customer service program that guarantees hassle-free solutions to any issue you might have within 24 hours!



Huntington Beach, CA 92647  
[pureenrichment.com](http://pureenrichment.com)