

pore
enrichment

5 YEAR
WARRANTY

2-IN-1 FLOOR & TABLE FAN



USER MANUAL
MODEL: PEFANDUO

TABLE OF CONTENTS

WARNINGS AND PRECAUTIONS	4
FCC NOTICE	5
INTRODUCTION.....	6
PRODUCT FEATURES.....	6
PRODUCT DIAGRAM.....	6
PRODUCT SPECIFICATIONS.....	6
PRE-OPERATING INSTRUCTIONS.....	7
OPERATING INSTRUCTIONS.....	8-10
CLEANING & MAINTAINANCE.....	10
WARRANTY & PRODUCT REGISTRATION.....	11

WARNINGS AND PRECAUTIONS



Read this instruction manual before operation. Failure to adhere to the following warnings can cause harm to you or the unit.

- Place the fan on an even and stable surface at least 8 inches away from the wall and other objects.
- For the best results, place the fan in an area where there is good airflow around the fan.
- This unit is for indoor use only. DO NOT use the unit in damp or wet areas.
- DO NOT use this unit in a location where it may fall into a bathtub, laundry, swimming pool, or other containers of water.
- DO NOT place your hands or other items under the fan head when the fan is on.
- DO NOT insert fingers, limbs, or other objects through the protective grill.
- DO NOT leave the fan unattended while in use.
- Keep this product out of the reach of children and pets.
- DO NOT use the unit if the cord or plug is damaged, after it malfunctions, or after it has been dropped or damaged in any way.
- DO NOT force the fan head up or down. Doing so may damage the unit.
- DO NOT carry the fan by the cord or use the cord as a handle.
- DO NOT disassemble this unit. Doing so may cause damage to the circuit and danger to you.
- DO NOT attempt to repair or replace parts. Doing so will void the warranty. The inside of this unit contains no user-serviceable parts.
- When using the extension pole it must be installed correctly in order for the fan to work properly.
- When the extension pole is not being used, please store it away carefully.
- When not being used for long periods of time, store the fan covered to avoid accumulating dust on the fan.
- Please email Customer Service at help@pureenrichment.com if the fan needs repair. Do not try to repair it yourself.

FCC NOTICE

Model: 2-in-1 Floor & Table Fan (PEFANDUO)

This device complies with part 15 of the FCC Rules. Operation is subject to the following two conditions: (1) This device may not cause harmful interference, and (2) this device must accept any interference received, including interference that may cause undesired operation.

Pure Enrichment
2803 S Yale St
Santa Ana, CA 92704
www.pureenrichment.com

The product is protected against unauthorized use. DO NOT modify it without the authorization of the manufacturer, or the user's authority to operate could be voided.

Note: This equipment has been tested and found to comply with the limits for a Class B digital device, pursuant to part 15 of the FCC Rules. These limits are designed to provide reasonable protection against harmful interference in a residential installation. This equipment generates, uses and can radiate radio frequency energy and, if not installed and used in accordance with the instructions, may cause harmful interference to radio communications. However, there is no guarantee that interference will not occur in a particular installation. If this equipment does cause harmful interference to radio or television reception, which can be determined by turning the equipment off and on, the user is encouraged to try to correct the interference by one or more of the following measures:

- Reorient or relocate the receiving antenna.
- Increase the separation between the equipment and receiver.
- Connect the equipment into an outlet on a circuit different from that to which the receiver is connected.
- Consult the dealer or an experienced radio/TV technician for help.

INTRODUCTION

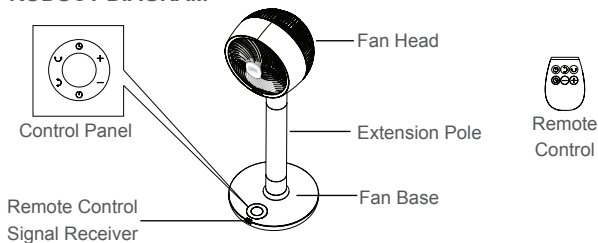
Thank you for purchasing the 2-in-1 Floor & Table Fan from Pure Enrichment. This versatile fan is the perfect solution to move air throughout your home or office. The deep-pitched blades, multi-directional oscillation, and precise speed control provide efficient airflow for large spaces.

PRODUCT FEATURES

We designed this product with several features that make it one of the most effective air circulation fans available. These include:

- 2-in-1 Floor and Table Design
- 24 Speeds
- Multi-Directional Oscillation Control
- Long Distance Air Circulation
- Auto Timer (1-15 hours)
- Sleep Mode

PRODUCT DIAGRAM



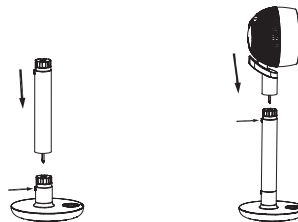
PRODUCT SPECIFICATIONS

Size	12" L x 12" W x 21.5-35" H
Weight	9.7 pounds
Power	100-240V, 50/60Hz, 35W
Fan Speed	24 levels
Timer	1-15 hours
Oscillation Range	Vertical: 80°, Horizontal: 160°
Noise Level	Low level <25dB, High level <60dB
Remote Control	Maximum range of 32 feet; Battery model: CR2032
Power Cord	6 feet

PRE-OPERATING INSTRUCTIONS

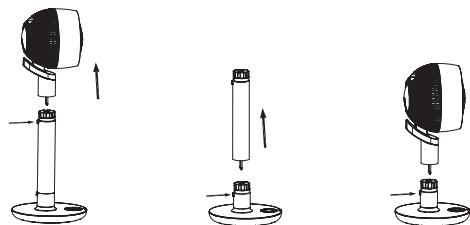
To install the extension pole:

1. Press the button on the back of the fan base and place the extension pole onto the base.
2. Press the button on the back of the extension pole and place the fan head onto the extension pole.



To remove the extension pole:

1. Press the button on the back of the extension pole and lift the fan head off of the extension pole.
2. Press the button on the back of the fan base and remove the extension pole from the base.
3. Press the button on the back of the fan base and place the fan head onto the base.



OPERATING INSTRUCTIONS

Place the fan on a flat and stable surface and plug the unit in.

NOTE: The unit will beep and the display will turn on when a button is pressed. If there is no button pressed for 45 seconds the unit will enter into energy-saving mode and the display will turn off. **Press any button to wake the unit up from energy-saving mode.**

POWER

- 1st press will turn the unit on. The display on the base of the fan will turn on and the fan will resume the settings selected during the previous use.
- 2nd press will turn the unit off.

SLEEP MODE

Sleep mode will run the fan at the current speed setting for 30 minutes and then decrease 3 levels every minute until it is running at the lowest speed (level 1).

Sleep mode may only be turned on using the control panel on the base of the fan.

To use sleep mode:

- Long press the power button for 2 seconds. The display will show "L0".
- To cancel sleep mode, press the power button.

VERTICAL OSCILLATION

The fan has an 80° range of vertical oscillation.

- 1st press will turn the vertical oscillation function on.
- 2nd press will turn the vertical oscillation function off.
- When the oscillation is turned off, the fan will remain on in the last position it was in. To change position, press the oscillation button and once the fan has reached the desired position, press the oscillation button again to turn the oscillation off.

OPERATING INSTRUCTIONS (CONT'D)

HORIZONTAL OSCILLATION

The fan has a 160° range of horizontal oscillation.

- 1st press will turn the horizontal oscillation function on.
- 2nd press will turn the horizontal oscillation function off.
- When the oscillation is turned off, the fan will remain on in the last position it was in. To change position, press the oscillation button and once the fan has reached the desired position, press the oscillation button again to turn the oscillation off.

TIMER

The automatic timer may be set for 1-15 hours. It can be programmed to automatically turn the fan on or off.

To set the timer:

- Press the timer button.
- Select the desired amount of time by pressing the +/- buttons.
- The display on the base of the fan will show the number of hours selected.
- The timer function will be set 5 seconds after the final number is selected.
- The display will then change back to the wind speed setting.

To cancel the timer:

- Press the timer button again.

PLUS/MINUS

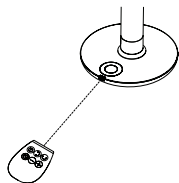
- Press + to increase the fan speed or number of hours for the timer.
- Press - to decrease the fan speed or number of hours for the timer.
- The display on the base of the fan will show the speed/hours selected.
- The timer may be set for 1-15 hours.
- The fan speed may be set at levels 1-24.

NOTE: Please see the Timer instructions above for detailed instructions on setting the timer.

OPERATING INSTRUCTIONS (CONT'D)

USING THE REMOTE CONTROL

When using the remote control, align the front of the remote control to the receiver on the fan base. The remote will work within 32 feet and with a maximum angle of 45°.



The remote control comes with one CR2032 battery installed. If you are using the remote control as instructed above and it is no longer working, it may be time to replace the battery.

CLEANING & MAINTENANCE

Before cleaning, disconnect the power to avoid electric shock or injury.

- Clean the rear grill and fan blades from dust as needed. We recommend cleaning every 2 months in order to keep the fan in optimal condition and performing well.
- Do not use chemical or corrosive cleaners as they may damage the fan.
- Use only soft brushes and gentle cleaners.
- Clean the surface with a damp cloth.
- To remove the front cover, remove the screw from underneath the cover. Once cleaned, ensure the cover and screw are replaced securely.

STORAGE

If the fan will not be used for a long period of time, please unplug it and store it in a dry and well-ventilated space. To avoid dust from collecting on the unit, use a cloth to cover the fan.

WARRANTY

The 2-in-1 Floor & Table Fan comes with an industry-leading 5 Year Warranty that begins on the date of purchase.

The warranty applies to the fan and necessary parts and labor relating thereto. The warranty does not apply to damage resulting from failure to follow the operating instructions, accidents, abuse, alterations, or disassembly by unauthorized individuals.

PRODUCT REGISTRATION

To ensure your full warranty, and to receive product updates and streamlined customer support, remember to register your product at:

pureenrichment.com/productregistration

ARE YOU 100% SATISFIED?

If you have product questions or concerns don't hesitate to contact us directly at:

Email: help@pureenrichment.com

Phone: (657) 275-3737

(Available Monday-Friday, 8am-5pm PST)

Pure Enrichment has an award-winning warranty, exchange, and customer service program that guarantees hassle-free solutions to any issue you might have within 24 hours!



Santa Ana, CA 92704
pureenrichment.com

REV: 05-2021