

**BALDOR® • RELIANCE** 

**Product Information Order**

**36T368W501G1**

**46LC 2P TEFC HOR 184CZ**

<b>Sales Order #:</b>	<b>1208711844-10</b>
<b>Customer Name:</b>	<b>PACER PUMPS</b>

**PRELIMINARY DATA**

**P-58-0680-C**

# ABB Motors and Mechanical Inc. DATA TRANSMITTAL AND CERTIFICATION

<b>Sales Order Number</b> 1208711844-10	<b>Customer Number</b> 231154	<b>Customer Order Number</b> 42936-00 (3 OF 6)	<b>P.O. Date</b> 12/22/2020
<p><b>Sold To:</b> PACER PUMPS 41 INDUSTRIAL CIRCLE LANCASTER, PA 17801 United States</p>			
<p>DATA PROVIDED WITH THIS TRANSMITTAL AND CERTIFICATIONS IS:  <input checked="" type="checkbox"/> PRELIMINARY, DATA FOR CUSTOMER APPROVAL:                      The associated documents requested on this order are submitted for approval.                      Please reply promptly or the order could be delayed.  <input type="checkbox"/> FINAL, APPROVED FOR CONSTRUCTION OR INSTALLATION.</p>			

**Ship To:** PACER PUMPS  
41 INDUSTRIAL CIRCLE  
LANCASTER, PA 17801  
United States

**Data Source:** ISSUED BY: Mary Crouch  
Baldor-Reliance Fort Smith  
12/23/2020

<b>Application</b> Centrifugal Pump	<b>Quantity</b> 1,000	<b>Frame</b> 184CZ	<b>Motor / Gen. D.S.:</b>	
<b>Elec Type</b> 5 HP	<b>HP</b> 5 HP	<b>Volts</b> 230	<b>Electrical Design</b>	<b>Motor / Gen. C.D.:</b>
<b>RPM</b> 3600	<b>Enclosure</b> TEFC	<b>Time CONT</b> 40	<b>Leads Location</b>	<b>Conduit Box:</b>
<b>Rotation Bi-directional</b>	<b>DC Field Excitation</b>	<b>Pwr Cd</b>	<b>Winding Type</b>	<b>Motor Part #</b>
<b>Insulation</b> F	<b>Mtg Drive</b> F-1	<b>Bearing Ball / Ball</b>	<b>S F</b> 1.15	<b>Line Voltage</b> PH/Hz/V
<b>Type</b>	<b>Torque</b>	<b>Enclosure</b>	<b>Insulation</b>	<b>FL Amps</b>

**Additional Specifications:**

<b>BASIC CONFIGURATION</b>	
Partial Motor Design	No
Frame Band	36
Customer Application	Centrifugal Pump
Letter Type	LC - Cap Start / Cap Run
Temp Code	None
<b>ELECTRICAL</b>	
Ambient Minimum	-25C
208 Volt Nameplate Rating	Usable at 208 Volt
Starting Method	Standard Start
<b>MOUNTING</b>	
Mounting Flange - DE	C-Face
Mounting Flange C-Face Type	Standard
Mounting Position	F-1
Frame Mounting	Foot (Dual Mounting Hole)
Lead Exit - Frame	Side - Center
Drive Method	Direct
Mounting Orientation	Horizontal



# ABB Motors and Mechanical Inc. DATA TRANSMITTAL AND CERTIFICATION

<b>Sales Order Number</b> 1208711844-10	<b>Customer Number</b> 231154	<b>Customer Order Number</b> 42936-00 (3 OF 6)
		<b>P.O. Date</b> 12/22/2020

Shaft - Special Material 316 Stainless  
 Shaft - Drill Hole End Drive End  
 Drill & Tap hole DE Shaft 5/16-24 UNF 2B X .88 DEEP  
 Shaft - Special Extension Yes  
 Shaft Extension TZ - SPECIAL  
 Shaft Drawing OL132107

**BEARINGS**

Bearing Enhancement DE Sealed  
 Bearing Enhancement ODE Sealed  
 Locked Bearing Drive End  
 Drive End Seal Slinger  
 Opposite Drive End Seal Slinger  
 Lube Type Grease  
 Grease Type Exxon Polyrex EM

**MECHANICAL**

Balance Standard (0.15 in/sec)  
 Rotation Facing ODE Bi-directional  
 Stainless Steel Hardware Yes  
 Stainless Steel Hardware Type 300 Series Stainless  
 Fan Material Standard  
 Paint System Standard (C2)  
 Paint Color Specification Standard Lacquer  
 Paint Color Charcoal Gray Metallic  
 Baldor-Reliance Paint Spec No 004824-00TBXA / MG1000G27

**MONITORING DEVICES**

Thermal Protection None

**CONDUIT BOX**

Main Conduit Box Required  
 Main Conduit Box Location Standard (side)  
 Main Conduit Box Material Aluminum  
 Main Conduit Box Size Standard Oversize  
 Cbox Entry Hole No  
 Lead Entry NPT Yes  
 Lead Entry NPT Qty 1  
 Lead Entry NPT Size (3/4 - 14 NPT)  
 Lead Entry Location Toward Feet - Down  
 Conduit Box Lead Entry Plugged Yes  
 Ground Servit Post No  
 Mechanical Start Switch Yes

**NAMEPLATE / LABELS**

Nameplate Language English  
 Customer Part Number Marks Yes  
 Customer Part Number P-58-680-C  
 Additional heater Markings No



# ABB Motors and Mechanical Inc. DATA TRANSMITTAL AND CERTIFICATION

Sales Order Number	Customer Number	Customer Order Number	P.O. Date
1208711844-10	231154	42936-00 (3 OF 6)	12/22/2020

Label "Heater Energized" No  
 Label CSA Yes  
 Label UR Yes

**PACKAGING**

Packaging Type Standard Packing

**DOCUMENTATION**

Document Unit of Measure US  
 Certified Dimension Sheet Yes  
 Performance Data/Curves Yes  
 Standard Connection Diagram Yes  
 Motor Instruction Manual Yes  
 Renewal Parts List Yes  
 Nameplate Data Yes  
 Documentation Format PDF

**COMMERCIAL COMMENTS**

Estimated Lead Time  
 Estimated Lead Time is based on plant loading at the time of quotation and is intended to be used as a guide for our customers. This estimation includes the Engineering and Manufacturing time only. It DOES NOT include shipping time. Please contact your ABB Motors and Mechanical Inc. representative if specific delivery requirements are needed.



Notes:	Class null Division null
--------	-----------------------------

Nameplate NP1256L	
<b>CAT.NO.</b>	
<b>SPEC.</b>	36T368W501G1
<b>HP</b>	5
<b>VOLTS</b>	230
<b>AMP</b>	21
<b>RPM</b>	3450
<b>FRAME</b>	184CZ
	<b>HZ</b> 60
	<b>PH</b> 1
<b>SER.F.</b>	1.15
	<b>CODE</b> G
	<b>DES</b> L
	<b>CLASS</b> F
<b>NEMA-NOM-EFF</b>	84
	<b>PF</b> 96
<b>RATING</b>	40C AMB-CONT
<b>CC</b>	
	<b>USABLE AT 208V</b> 21.7
<b>DE</b>	6207
	<b>ODE</b> 6205
<b>ENCL</b>	TEFC
	<b>SN</b>
	P-58-680-C

**AC Induction Motor Performance Data**

Record # 83250

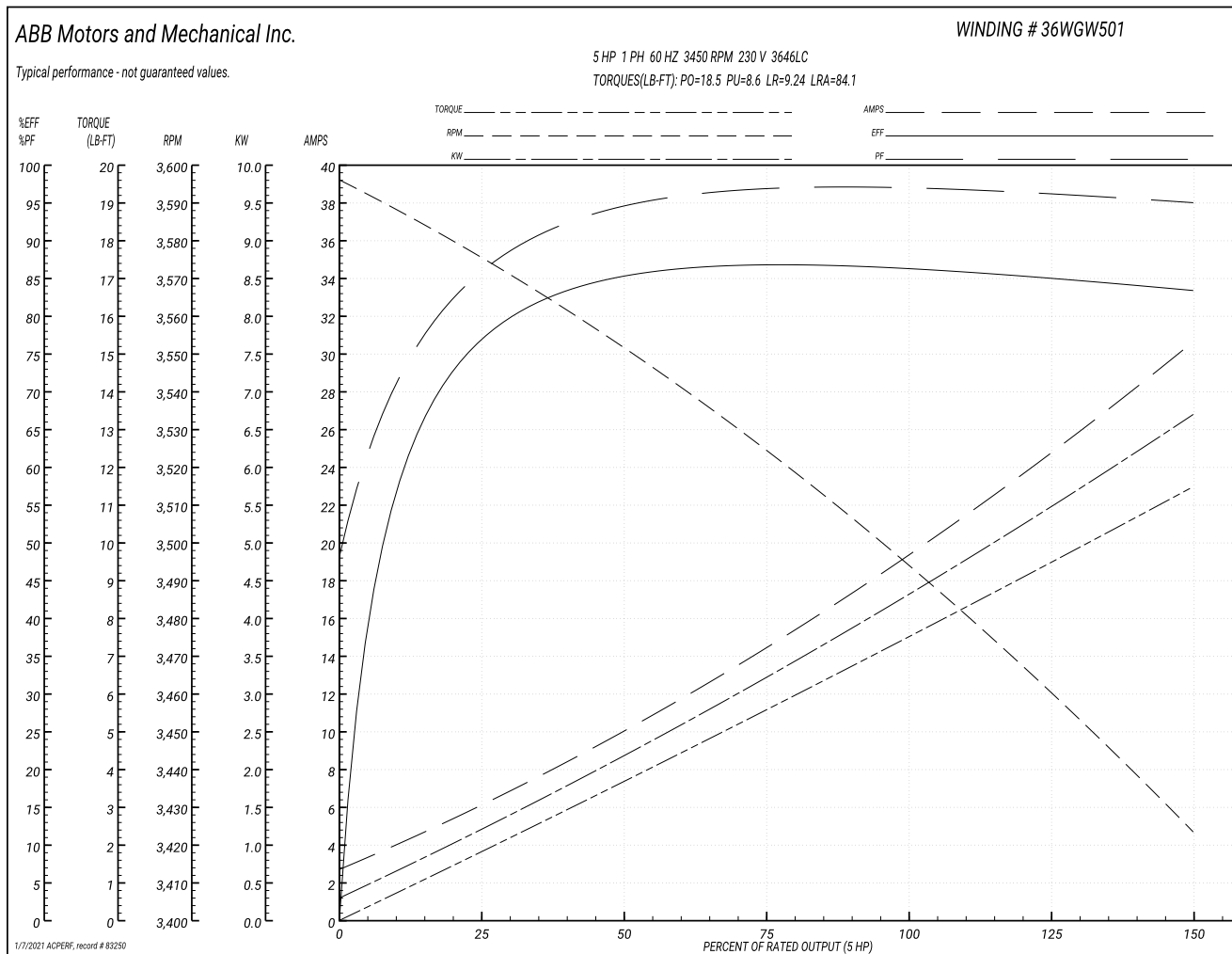
Typical performance - not guaranteed values

Winding: 36WG501-R003		Type: 3646LC	Enclosure: TEFC
<b>Nameplate Data</b>		<b>230 V, 60 Hz: Single Voltage Motor</b>	
Rated Output (HP)	5	Full Load Torque	7.52 LB-FT
Volts	230	Start Configuration	direct on line
Full Load Amps	21	Breakdown Torque	18.5 LB-FT
R.P.M.	3450	Pull-up Torque	8.6 LB-FT
Hz	60 Phase	Locked-rotor Torque	9.24 LB-FT
NEMA Design Code	L KVA Code	Starting Current	84.1 A
Service Factor (S.F.)	1.15	No-load Current	2.8 A
NEMA Nom. Eff.	84 Power Factor	Line-line Res. @ 25°C	0.366 Ω A Ph 0.906 Ω B Ph
Rating - Duty	40C AMB-CONT	Temp. Rise @ Rated Load	
		Locked-rotor Power Factor	82.6
		Rotor inertia	0.207 lb-ft <sup>2</sup>

**Load Characteristics 230 V, 60 Hz, 5 HP**

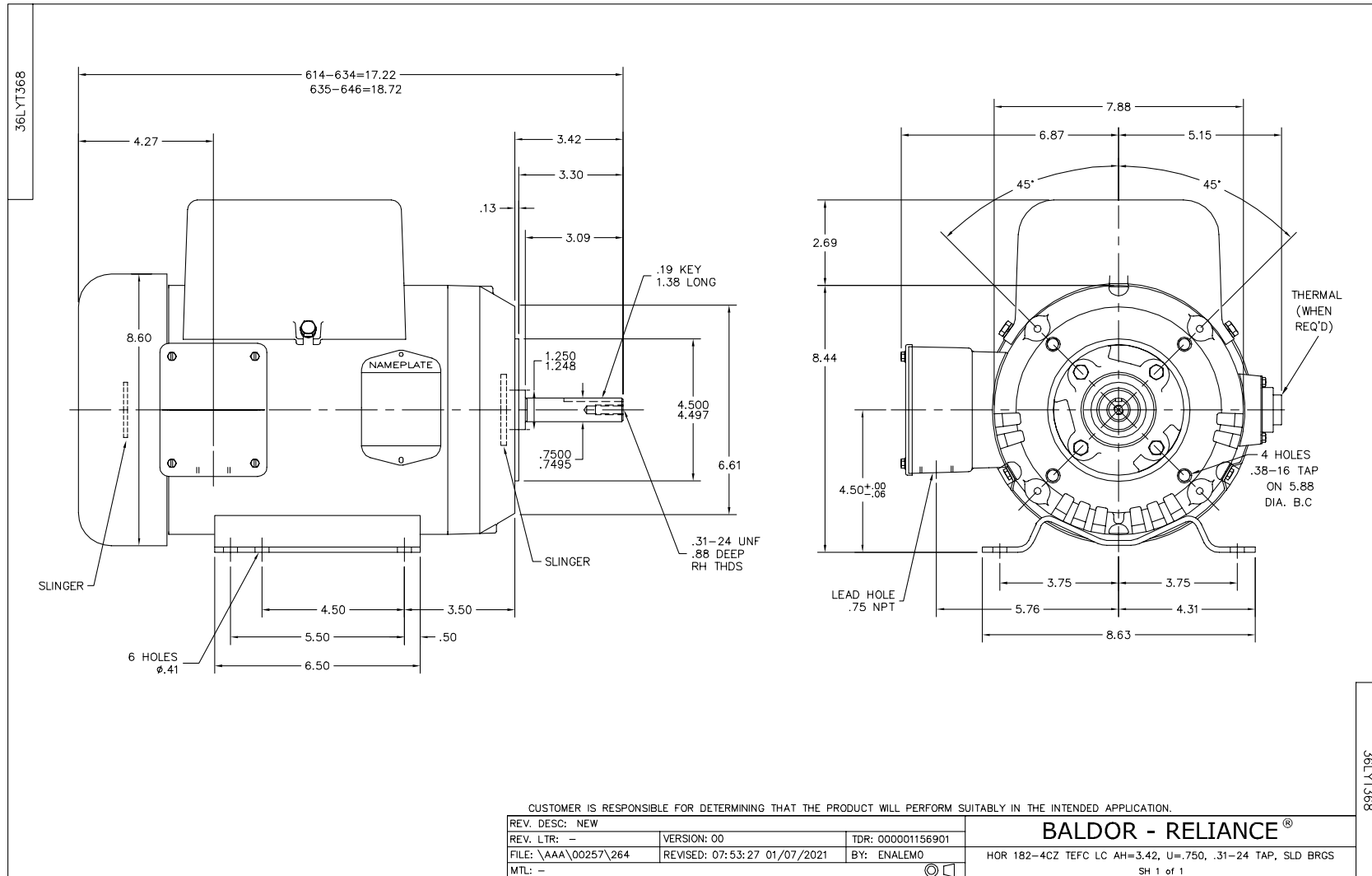
% of Rated Load	25	50	75	100	125	150	S.F.
Power Factor	90	95	96	97	96	95	96
Efficiency	76.2	84.7	86.7	86.6	85.3	83.3	85.8
Speed	3575	3550	3524	3495	3462	3422	3475
Line amperes	5.96	10.1	14.6	19.4	24.7	30.7	22.6

Performance Graph at 230V, 60Hz, 5.0HP Typical performance - Not guaranteed values

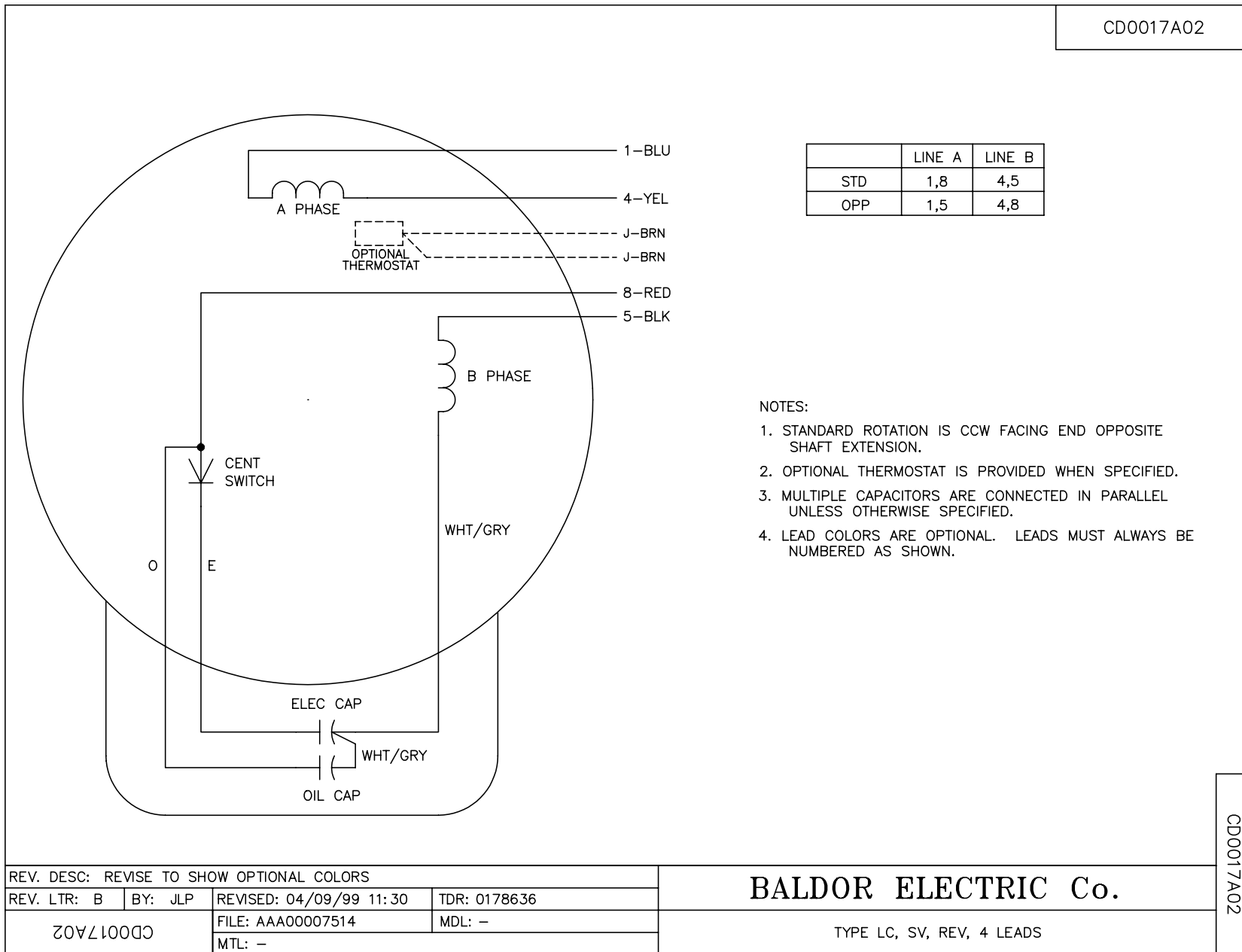


Parts List		
Part Number	Description	Quantity
36WGW501-C002	1,2,3646LC,N,CD0017A02,CS0046,36SL2360,3	1.000 EA
36WGW501-R003	1,2,3646LC,N,CD0017A02,TEFC,L,60,5 HP,23	1.000 EA
36T368	TEFC RG 182-184CZ GP LC N F1	1.000 EA
MJ1000A02	GREASE, MOBIL POLYREX EM - 124047	0.050 LB
HW1025A10	#10 BALANCE WASHER (SPL)	4.000 EA
36FN4000A03	INFN, STEEL, 6.50 OD, 1.612 ID	1.000 EA
BG6205E03	6205 D.SL,C3,POLYREX EM	1.000 EA
BG6207E03	6207 D.SL,C3,POLYREX EM	1.000 EA
MG1000G27	MED CHARCOAL METALLIC GREY 400-0096	0.022 GA
35FN3002A04SP	EXFN, PLASTIC, 6.376 OD, .906 ID W/KEY	1.000 EA
36SB0034C00	BAND ASSY, HORZ X	1.000 EA
36SH6704C01	SH,TEFC,180,CZ,MU3005,6207,6205,E2=5.039	1.000 EA
HA3101A28	THRUBOLT 1/4-20 X 12.500 OHIO ROD	4.000 EA
36CB5005A05	CAPACITOR BOX KIT, 36CB3800, OC3025F11,	1.000 EA
SP5172A05	37 TYPE LC TORQ STAT SW LEAD ASSEMBLY	1.000 EA
RS9000A11SP	ROT SW,TORQ 300-2-60,AC-1.127",3.625" SP	1.000 EA
MG5017	VARNISH - PDG 2500	0.050 GA
LB1119N	WARNING LABEL	1.000 EA
LC0017	CONN LABEL-1 PHASE-SINGLE VOLT-REV ROTNO	1.000 EA
LB1417	LABEL CARTON 6X4 PERFORATED BLANK ROLLS	1.000 EA
NP1256L	ALUM UL CSA CC INDUSTRIAL MOTOR A60	1.000 EA
G0PA1000	PKG GRP, PRINT PK1026A06	1.000 EA
MN416A01	TAG-INSTAL-MAINT no wire (1200/bx) 3/19	1.000 EA





CD0017A02



	LINE A	LINE B
STD	1,8	4,5
OPP	1,5	4,8

NOTES:

1. STANDARD ROTATION IS CCW FACING END OPPOSITE SHAFT EXTENSION.
2. OPTIONAL THERMOSTAT IS PROVIDED WHEN SPECIFIED.
3. MULTIPLE CAPACITORS ARE CONNECTED IN PARALLEL UNLESS OTHERWISE SPECIFIED.
4. LEAD COLORS ARE OPTIONAL. LEADS MUST ALWAYS BE NUMBERED AS SHOWN.

REV. DESC: REVISE TO SHOW OPTIONAL COLORS			
REV. LTR: B	BY: JLP	REVISED: 04/09/99 11:30	TDR: 0178636
CD0017A02		FILE: AAA00007514	MDL: -
		MTL: -	

**BALDOR ELECTRIC Co.**

TYPE LC, SV, REV, 4 LEADS

CD0017A02

Marketing maintained PDF of MN416:

<http://www.baldor.com/support/Literature/Load.ashx/MN416?ManNumber=MN416>