

BALDOR® • RELIANCE 

Product Information Order

35E5592Q060G1

32M 2P TEFC VER 145TCZ SUPER E

Sales Order #:	1208711867-10
Customer Name:	PACER PUMPS

PRELIMINARY DATA

P-62-1263

ABB Motors and Mechanical Inc. DATA TRANSMITTAL AND CERTIFICATION

Sales Order Number 1208711867-10	Customer Number 231154	Customer Order Number 429236-00 (5 OF 6)	P.O. Date 12/22/2020
<p>Sold To: PACER PUMPS 41 INDUSTRIAL CIRCLE LANCASTER, PA 17801 United States</p>			
<p>DATA PROVIDED WITH THIS TRANSMITTAL AND CERTIFICATIONS IS: <input checked="" type="checkbox"/> PRELIMINARY, DATA FOR CUSTOMER APPROVAL: The associated documents requested on this order are submitted for approval. Please reply promptly or the order could be delayed. <input type="checkbox"/> FINAL, APPROVED FOR CONSTRUCTION OR INSTALLATION.</p>			

Ship To: PACER PUMPS
41 INDUSTRIAL CIRCLE
LANCASTER, PA 17801
United States

Data Source: ISSUED BY: Mary Crouch
Baldor-Reliance Fort Smith
12/23/2020

Application Centrifugal Pump	Quantity 1,000	Frame 145TCZ	Motor / Gen. D.S.:	
Elec Type 3 HP	HP 3	Enclosure TEFC	Electrical Design	Motor / Gen. C.D.:
RPM 3600	Pis 3	Time CONT	Leads Location	Conduit Box:
Rotation Bi-directional	DC Field Excitation	Pwr Cd	Winding Type	Motor Part #
Insulation F	Mtg F-1	Drive	Mounting Base F-1	Line Voltage PH/Hz/V
Type	Torque	Enclosure	Insulation	FL Amps

Additional Specifications:

BASIC CONFIGURATION
 Partial Motor Design No
 Frame Band 35
 Customer Application Centrifugal Pump
 Temp Code None
ELECTRICAL
 Ambient Minimum -25C
 Starting Method Standard Start
MOUNTING
 Mounting Flange - DE C-Face
 Mounting Position F-1
 Frame Mounting Footless
 Drive Method Direct
 Mounting Orientation Horizontal
 Shaft - Special Material 316 Stainless
 Shaft - Drill Hole End Drive End
 Drill & Tap hole DE Shaft 5/16-24 UNF 28 X .88 DEEP
 Shaft - Special Extension Yes



ABB Motors and Mechanical Inc. DATA TRANSMITTAL AND CERTIFICATION

Sales Order Number	Customer Number	Customer Order Number	P.O. Date								
1208711867-10	231154	429236-00 (5 OF 6)	12/22/2020								
<table style="width: 100%; border: none;"> <tr> <td style="width: 33%;">Shaft Extension</td> <td style="width: 33%;">TZ - SPECIAL</td> <td style="width: 33%;"></td> <td></td> </tr> <tr> <td>Shaft Drawing</td> <td>OL119878</td> <td></td> <td></td> </tr> </table>				Shaft Extension	TZ - SPECIAL			Shaft Drawing	OL119878		
Shaft Extension	TZ - SPECIAL										
Shaft Drawing	OL119878										
BEARINGS											
Bearing Enhancement DE	Sealed										
Bearing Enhancement ODE	Sealed										
Locked Bearing	Drive End										
Drive End Seal	Slinger										
Opposite Drive End Seal	Slinger										
Lube Type	Grease										
Grease Type	Exxon Polyrex EM										
MECHANICAL											
Balance	Standard (0.15 in/sec)										
Rotation Facing ODE	Bi-directional										
Fan Material	Standard										
Paint System	Standard (C2)										
Paint Color Specification	Standard Lacquer										
Paint Color	Charcoal Gray Metallic										
Baldor-Reliance Paint Spec No	004824-007BXYA / MG1000G27										
Auto Drain Type	Hole(s) in End Shield(s)										
MONITORING DEVICES											
Thermal Protection	None										
CONDUIT BOX											
Main Conduit Box	Required										
Main Conduit Box Location	Standard (side)										
Main Conduit Box Material	Aluminum										
Main Conduit Box Size	Standard Oversize										
Cbox Entry Hole	No										
Lead Entry NPT	Yes										
Lead Entry NPT Qty	1										
Lead Entry NPT Size	(3/4 - 14 NPT)										
Lead Entry Location	Toward Feet - Down										
Conduit Box Lead Entry Plugged	Yes										
Grounding	Yes										
Ground Servit Post	No										
NAMEPLATE / LABELS											
Nameplate Language	English										
Customer Part Number Marks	Yes										
Customer Part Number	P-62-1263										
Additional heater Markings	No										
Label "Heater Energized"	No										
Label CSA	Yes										
Label UR	Yes										
PACKAGING											
Packaging Type	Standard Packing										



ABB Motors and Mechanical Inc. DATA TRANSMITTAL AND CERTIFICATION

Sales Order Number 1208711867-10	Customer Number 231154	Customer Order Number 429236-00 (5 OF 6)	P.O. Date 12/22/2020
--	----------------------------------	--	--------------------------------

DOCUMENTATION

Document Unit of Measure	US
Certified Dimension Sheet	Yes
Performance Data/Curves	Yes
Standard Connection Diagram	Yes
Motor Instruction Manual	Yes
Renewal Parts List	Yes
Nameplate Data	Yes
Documentation Format	PDF

SPECIAL ITEMS

Custom Requirements	Yes
Custom Requirements	4 PLUGGED DRAIN HOLES IN DRIVE END SHAFT

COMMERCIAL COMMENTS

Estimated Lead Time

Estimated Lead Time is based on plant loading at the time of quotation and is intended to be used as a guide for our customers. This estimation includes the Engineering and Manufacturing time only. It DOES NOT include shipping time. Please contact your ABB Motors and Mechanical Inc. representative if specific delivery requirements are needed.



Notes:	Class None Division Not Applicable
--------	---------------------------------------

Nameplate NP1259L	
CAT.NO.	
SPEC.	35E5592Q060G1
HP	3
VOLTS	230/460
AMP	7.2/3.6
RPM	3450
FRAME	145TCZ HZ 60 PH 3
SER.F.	1.15 CODE L DES B CL F
NEMA-NOM-EFF	86.5 PF 92
RATING	40C AMB-CONT USABLE AT 208V
CC	010A
DE	6205 ODE 6203
ENCL	TEFC SN
	P-62-1263

AC Induction Motor Performance Data

Record # 76788

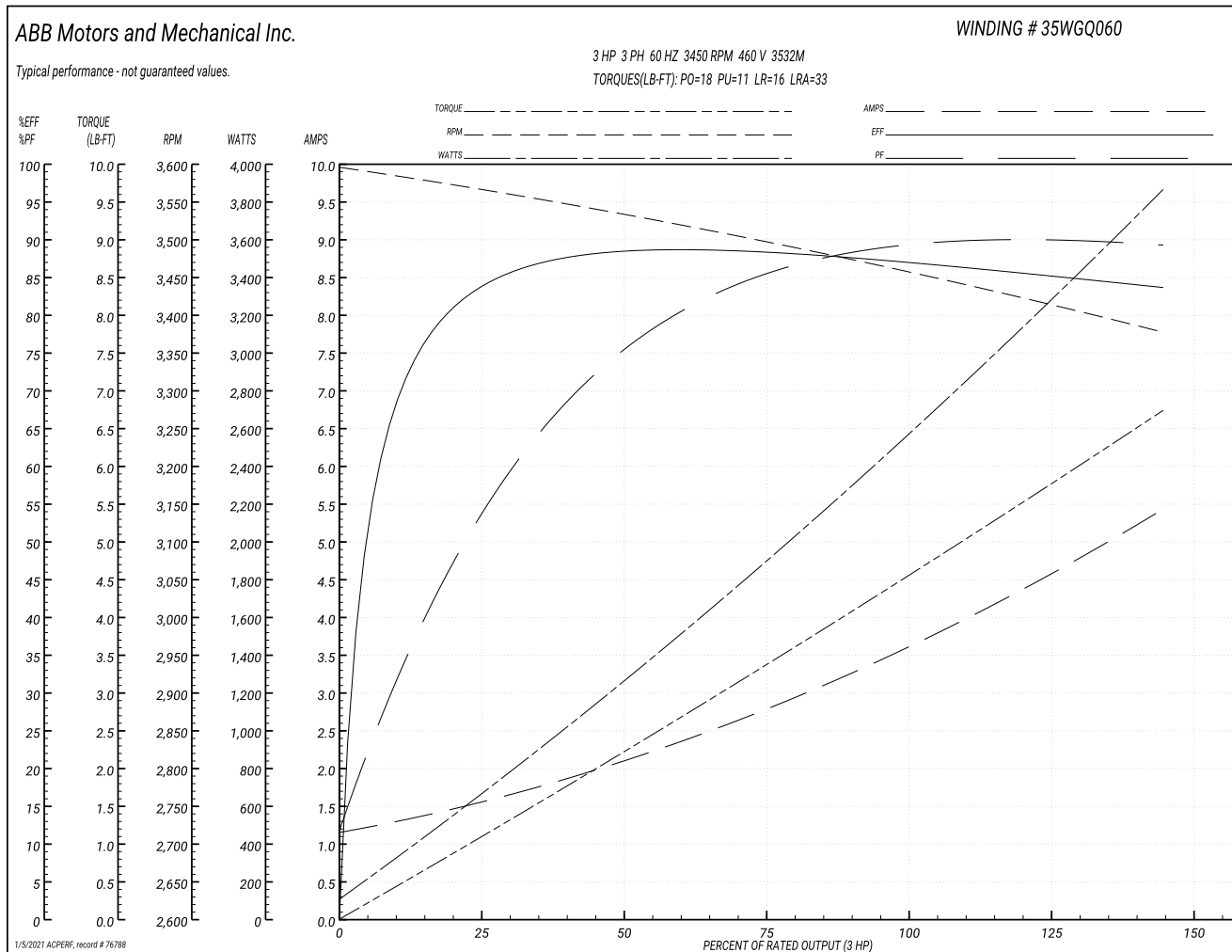
Typical performance - not guaranteed values

Winding: 35WGQ060-R031		Type: 3532M	Enclosure: TEFC	
Nameplate Data			460 V, 60 Hz: High Voltage Connection	
Rated Output (HP)	3	Full Load Torque	4.5 LB-FT	
Volts	230/460	Start Configuration	direct on line	
Full Load Amps	7.2/3.6	Breakdown Torque	18 LB-FT	
R.P.M.	3450	Pull-up Torque	11 LB-FT	
Hz	60 Phase	Locked-rotor Torque	16 LB-FT	
NEMA Design Code	B KVA Code	Starting Current	33 A	
Service Factor (S.F.)	1.15	No-load Current	1.2 A	
NEMA Nom. Eff.	86.5 Power Factor	Line-line Res. @ 25°C	4.7 Ω	
Rating - Duty	40C AMB-CONT	Temp. Rise @ Rated Load	61°C	
S.F. Amps		Temp. Rise @ S.F. Load	74°C	
		Locked-rotor Power Factor	47.1	
		Rotor inertia	0.0885 LB-FT ²	

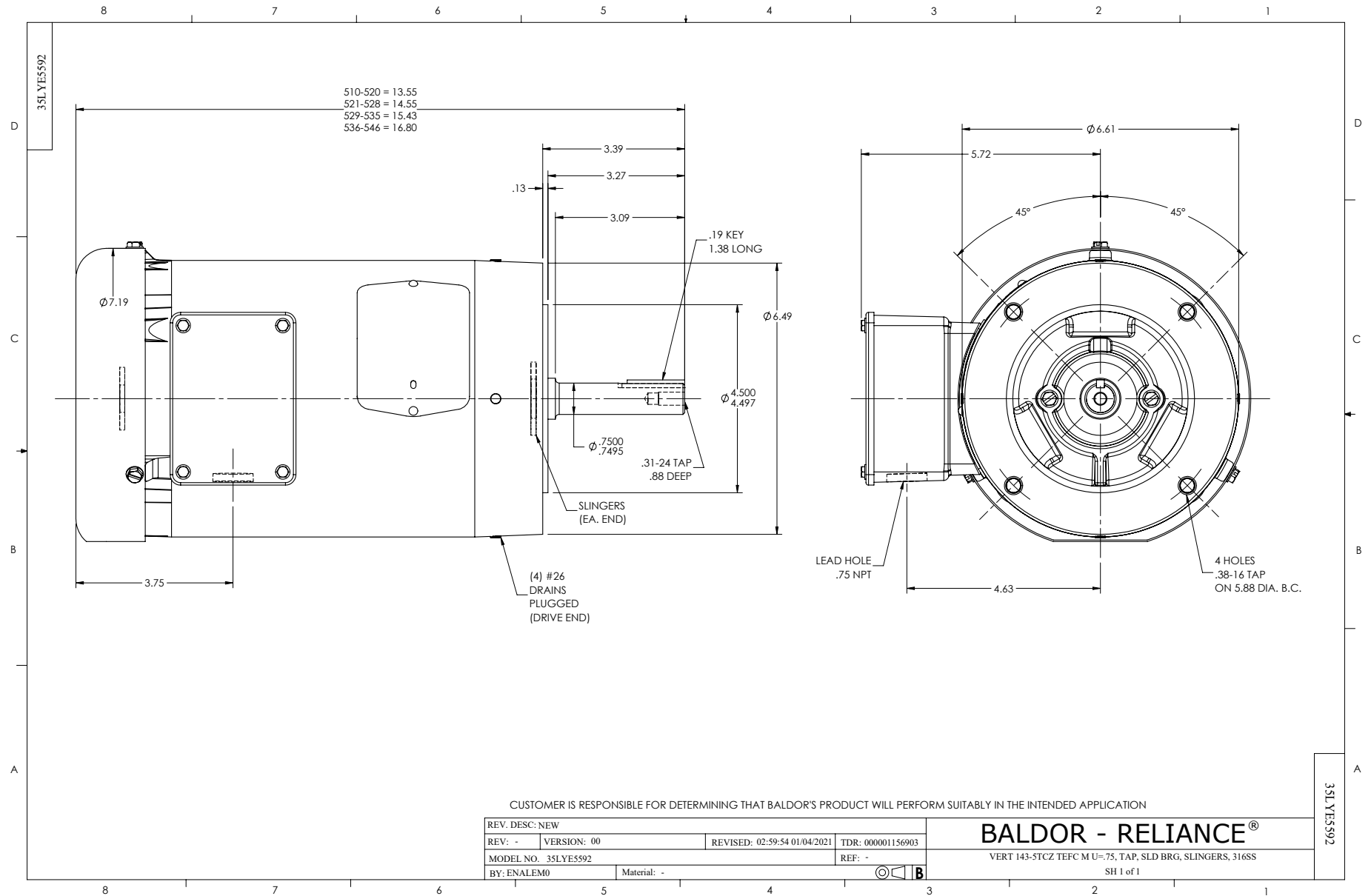
Load Characteristics 460 V, 60 Hz, 3 HP

% of Rated Load	25	50	75	100	125	150	S.F.
Power Factor	57	77	85	88	89	90	89
Efficiency	84	87.9	88.3	87.2	85.6	83.5	86.2
Speed	3562	3531	3498	3462	3421	3375	3437
Line amperes	1.5	2.1	2.8	3.6	4.5	5.4	4.14

Performance Graph at 460V, 60Hz, 3.0HP Typical performance - Not guaranteed values



Parts List		
Part Number	Description	Quantity
35WGG060-C001	3,2,3532M,N,CD0005,CS0008,35SL2243,35RC2	1.000 EA
35WGG060-R031	3,2,3532M,N,CD0005,TEFC,B,60,3 HP,230/46	1.000 EA
35E5592	TEFC N 143-145TCZ GP M N F1	1.000 EA
MJ1000A02	GREASE, MOBIL POLYREX EM - 124047	0.050 LB
HW1025A10	#10 BALANCE WASHER (SPL)	4.000 EA
BG6203E03	6203 D.SL,C3,POLYREX EM	1.000 EA
BG6205E03	6205 D.SL,C3,POLYREX EM	1.000 EA
MG1000G27	MED CHARCOAL METALLIC GREY 400-0096	0.017 GA
35SB0009C00	AA BAND ASSY, VERT 135135	1.000 EA
35SH2G59C01	SH,TEFC,140,TCZ,MU3005,6205,6203,E2=4.7,	1.000 EA
HA3100A18	THRUBOLT 10-32 X 9.250	4.000 EA
MG5024	varNISH PEDIGREE® 8183 VT POLYESTER	0.050 GA
LC0005E01	CONN.DIA./WARNING LABEL (LC0005/LB1119N)	1.000 EA
LB1417	LABEL CARTON 6X4 PERFORATED BLANK ROLLS	1.000 EA
NP1259L	ALUM SUPER-E UL CSA-EEV CC NEMA PREMIUM	1.000 EA
36PA1001	PKG GRP, PRINT PK1017A06	1.000 EA
PK3082	STYROFOAM CRADLE	1.000 EA
MN416A01	TAG-INSTAL-MAINT no wire (1200/bx) 3/19	1.000 EA



CD0005



LOW VOLTAGE
(2Y)



LINE

HIGH VOLTAGE
(1Y)



LINE

NOTES:

1. INTERCHANGE ANY TWO LINE LEADS TO REVERSE ROTATION.
2. OPTIONAL THERMOSTATS ARE PROVIDED WHEN SPECIFIED.
3. ACTUAL NUMBER OF INTERNAL PARALLEL CIRCUITS MAY BE A MULTIPLE OF THOSE SHOWN ABOVE.
4. LEAD COLORS ARE OPTIONAL. LEADS MUST ALWAYS BE NUMBERED AS SHOWN.

REV. DESC: REVISE TO SHOW OPTIONAL COLORS			
REV. LTR: E	BY: JLP	REVISED: 01/19/99 10:15	TDR: 0171435
90000		FILE: AAA00005140	MDL: -
		MTL: -	

BALDOR ELECTRIC Co.

3PH, DV, 9 LEADS

CD0005

Marketing maintained PDF of MN416:

<http://www.baldor.com/support/Literature/Load.ashx/MN416?ManNumber=MN416>