

**BALDOR® • RELIANCE** 

**Product Information Order**

**36T369S115G1**

**34LC 2P TEFC VER 182CZ**

<b>Sales Order #:</b>	<b>1208711832-10</b>
<b>Customer Name:</b>	<b>PACER PUMPS</b>

**PRELIMINARY DATA**

**P-58-0805-C**

# ABB Motors and Mechanical Inc. DATA TRANSMITTAL AND CERTIFICATION

<b>Sales Order Number</b> 1208711832-10	<b>Customer Number</b> 231154	<b>Customer Order Number</b> 42936-00 (2 OF 6)	<b>P.O. Date</b> 12/22/2020
<p><b>Sold To:</b> PACER PUMPS 41 INDUSTRIAL CIRCLE LANCASTER, PA 17601 United States</p>			
<p>DATA PROVIDED WITH THIS TRANSMITTAL AND CERTIFICATIONS IS:  <input checked="" type="checkbox"/> PRELIMINARY, DATA FOR CUSTOMER APPROVAL:                  The associated documents requested on this order are submitted for approval.                  Please reply promptly or the order could be delayed.  <input type="checkbox"/> FINAL, APPROVED FOR CONSTRUCTION OR INSTALLATION.</p>			

**Ship To:** PACER PUMPS  
41 INDUSTRIAL CIRCLE  
LANCASTER, PA 17601  
United States

**Data Source:** ISSUED BY: Mary Crouch  
Baldor-Reliance Fort Smith  
12/23/2020

<b>Application</b> Centrifugal Pump	<b>Quantity</b> 1,000	<b>Frame</b> 182C2	<b>Motor / Gen. D.S.:</b>
<b>Elec Type</b> 3 HP	<b>HP</b> 3 HP	<b>Electrical Design</b>	<b>Motor / Gen. C.D.:</b>
<b>RPM</b> 3600	<b>Enclosure</b> TEFC	<b>Time</b> CONT	<b>Conduit Box:</b>
<b>Rotation</b> Bi-directional	<b>DC Field Excitation</b>	<b>Pwr Cd</b>	<b>Motor Part #</b>
<b>Insulation</b> F	<b>Mtg Drive</b> F-1	<b>Bearing Ball / Ball</b>	<b>Line Voltage</b> PH/HzV
<b>Type</b>	<b>Torque</b>	<b>Insulation</b>	<b>FL Amps</b>

**Additional Specifications:**

**BASIC CONFIGURATION**  
 Partial Motor Design No  
 Frame Band 36  
 Customer Application Centrifugal Pump  
 Letter Type LC - Cap Start / Cap Run  
 Temp Code None  
**ELECTRICAL**  
 Ambient Minimum -25C  
 208 Volt Nameplate Rating Usable at 208 Volt  
 Starting Method Standard Start  
**MOUNTING**  
 Mounting Flange - DE C-Face  
 Mounting Flange C-Face Type Standard  
 Mounting Position F-1  
 Frame Mounting Footless  
 Drive Method Direct  
 Mounting Orientation Horizontal  
 Shaft - Special Material 316 Stainless



# ABB Motors and Mechanical Inc. DATA TRANSMITTAL AND CERTIFICATION

<b>Sales Order Number</b> 1208711832-10	<b>Customer Number</b> 231154	<b>Customer Order Number</b> 42936-00 (2 OF 6)	<b>P.O. Date</b> 12/22/2020
--	----------------------------------	---	--------------------------------

Shaft - Drill Hole End Drive End  
 Drill & Tap hole DE Shaft 5/16-24 UNF 28 X .88 DEEP  
 Shaft - Special Extension Yes  
 Shaft Extension TZ - SPECIAL  
 Shaft Drawing OL132103

**BEARINGS**  
 Bearing Enhancement DE Sealed  
 Bearing Enhancement ODE Sealed  
 Locked Bearing Drive End  
 Drive End Seal Slinger  
 Opposite Drive End Seal Slinger  
 Lube Type Grease  
 Grease Type Exxon Polyrex EM

**MECHANICAL**  
 Balance Standard (0.15 in/sec)  
 Rotation Facing ODE Bi-directional  
 Stainless Steel Hardware Yes  
 Stainless Steel Hardware Type 300 Series Stainless  
 Fan Material Standard

Paint System Standard (C2)  
 Paint Color Specification Standard Lacquer  
 Paint Color Charcoal Gray Metallic  
 Baldor-Reliance Paint Spec No 004824-007BXA / MG1000G27  
 Frame Grounding Required Yes

Ground Pad Location Frame - same side as main CB  
**MONITORING DEVICES**  
 Thermal Protection None

**CONDUIT BOX**  
 Main Conduit Box Required  
 Main Conduit Box Location Standard (side)  
 Main Conduit Box Material Aluminum  
 Main Conduit Box Size Standard Oversize  
 Cbox Entry Hole No  
 Lead Entry NPT Yes  
 Lead Entry NPT Qty 1  
 Lead Entry NPT Size (3/4 - 14 NPT)  
 Lead Entry Location Toward Feet - Down

Conduit Box Lead Entry Plugged Yes  
 Ground Servit Post No  
 Mechanical Start Switch Yes

**NAMEPLATE / LABELS**  
 Nameplate Language English  
 Customer Part Number Marks Yes  
 Customer Part Number P-58-0805-C



# ABB Motors and Mechanical Inc. DATA TRANSMITTAL AND CERTIFICATION

Sales Order Number	Customer Number	Customer Order Number	P.O. Date
1208711832-10	231154	42936-00 (2 OF 6)	12/22/2020

Additional heater Markings No  
 Label "Heater Energized" No  
 Label CSA Yes  
 Label UR Yes

**PACKAGING**  
 Packaging Type Standard Packing

**DOCUMENTATION**

Document Unit of Measure US  
 Certified Dimension Sheet Yes  
 Performance Data/Curves Yes  
 Standard Connection Diagram Yes  
 Motor Instruction Manual Yes  
 Renewal Parts List Yes  
 Nameplate Data Yes  
 Documentation Format PDF

**SPECIAL ITEMS**  
 Custom Requirements Yes  
 Custom Requirements MOUNTING HOLES 3/8-16 5.875 B.C.

**COMMERCIAL COMMENTS**  
 Estimated Lead Time  
 Estimated Lead Time is based on plant loading at the time of quotation and is intended to be used as a guide for our customers. This estimation includes the Engineering and Manufacturing time only. It DOES NOT include shipping time. Please contact your ABB Motors and Mechanical Inc. representative if specific delivery requirements are needed.



Notes:	Class null Division null
--------	-----------------------------

Nameplate NP1256L	
<b>CAT.NO.</b>	
<b>SPEC.</b>	36T369S115G1
<b>HP</b>	3
<b>VOLTS</b>	115/230
<b>AMP</b>	24.8/12.4
<b>RPM</b>	3450
<b>FRAME</b>	182CZ
<b>HZ</b>	60
<b>PH</b>	1
<b>SER.F.</b>	1.15
<b>CODE</b>	H
<b>DES</b>	L
<b>CLASS</b>	F
<b>NEMA-NOM-EFF</b>	82
<b>PF</b>	98
<b>RATING</b>	40C AMB-CONT
<b>CC</b>	
<b>DE</b>	6207
<b>ODE</b>	6205
<b>USABLE AT 208V</b>	14
<b>ENCL</b>	TEFC
<b>SN</b>	
	P-58-0805-C

**AC Induction Motor Performance Data**

Record # 70619

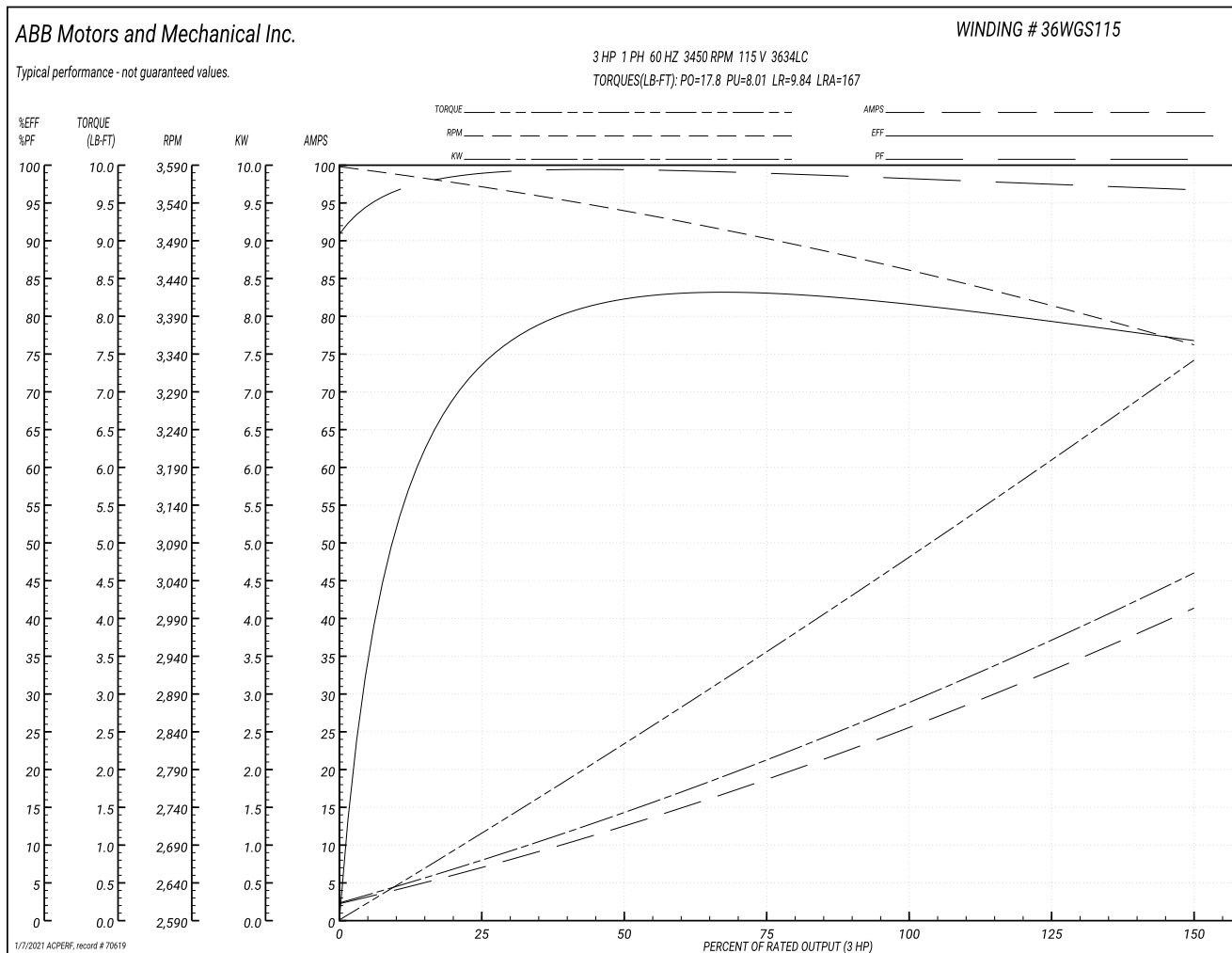
Typical performance - not guaranteed values

Winding: 36WGS115-R002		Type: 3634LC	Enclosure: TEFC
<b>Nameplate Data</b>		<b>115 V, 60 Hz: Low Voltage Connection</b>	
Rated Output (HP)	3	Full Load Torque	4.71 LB-FT
Volts	115/230	Start Configuration	direct on line
Full Load Amps	24.8/12.4	Breakdown Torque	17.8 LB-FT
R.P.M.	3450	Pull-up Torque	8.01 LB-FT
Hz	60 Phase 1	Locked-rotor Torque	9.84 LB-FT
NEMA Design Code	L KVA Code H	Starting Current	167 A
Service Factor (S.F.)	1.15	No-load Current	2.06 A
NEMA Nom. Eff.	82 Power Factor 98	Line-line Res. @ 25°C	0.148 Ω A Ph 0.825 Ω B Ph
Rating - Duty	40C AMB-CONT	Temp. Rise @ Rated Load	56°C
S.F. Amps		Temp. Rise @ S.F. Load	70°C
		Locked-rotor Power Factor	76.5
		Rotor inertia	0.153 LB-FT <sup>2</sup>

**Load Characteristics 115 V, 60 Hz, 3 HP**

% of Rated Load	25	50	75	100	125	150	S.F.
Power Factor	99	99	99	98	98	97	98
Efficiency	72.9	81.1	82.8	82.3	80.3	76.4	81.1
Speed	3555	3526	3494	3458	3414	3349	3432
Line amperes	7.46	12.9	18.62	24.8	31.8	41.6	29

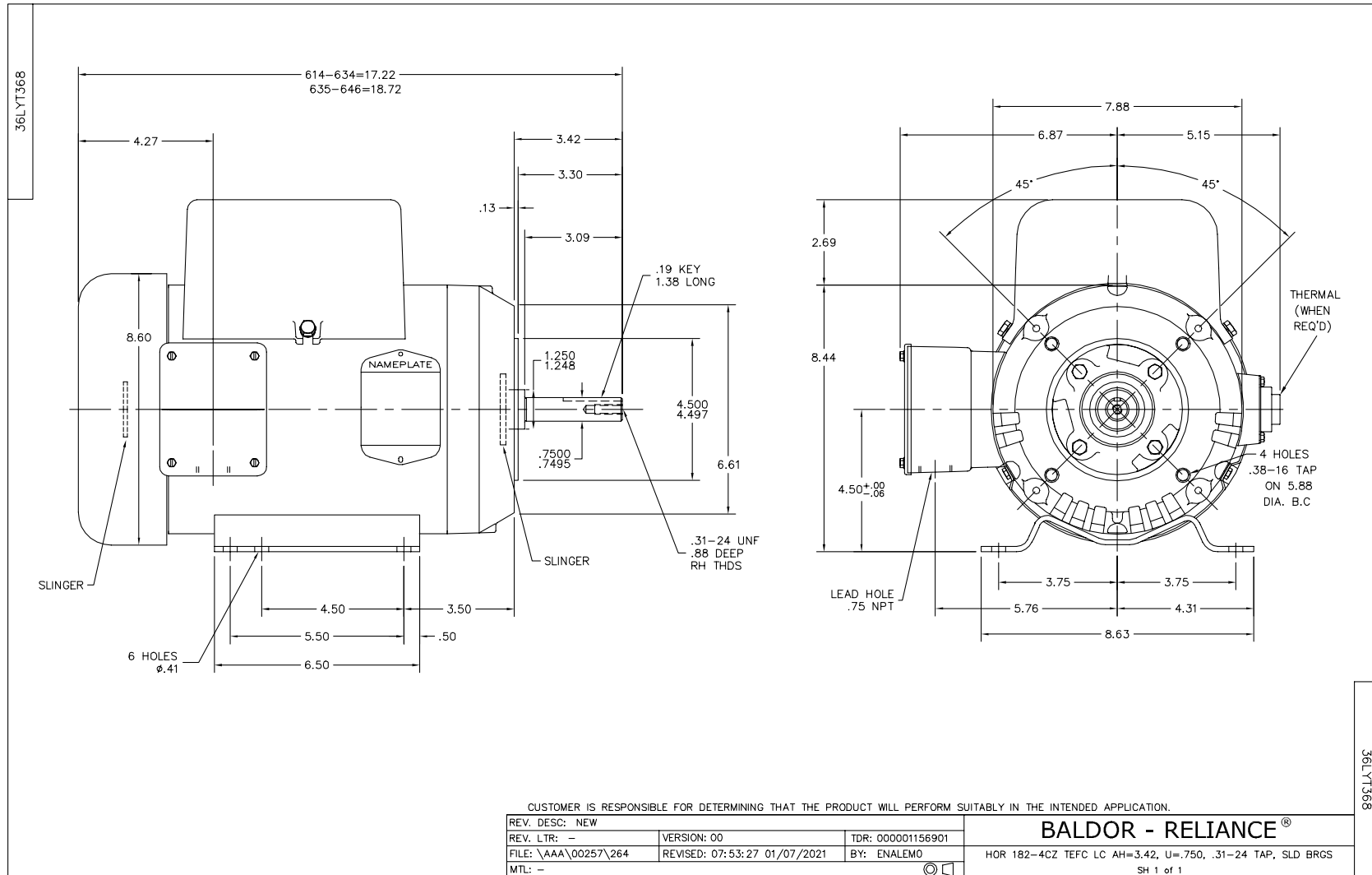
Performance Graph at 115V, 60Hz, 3.0HP Typical performance - Not guaranteed values



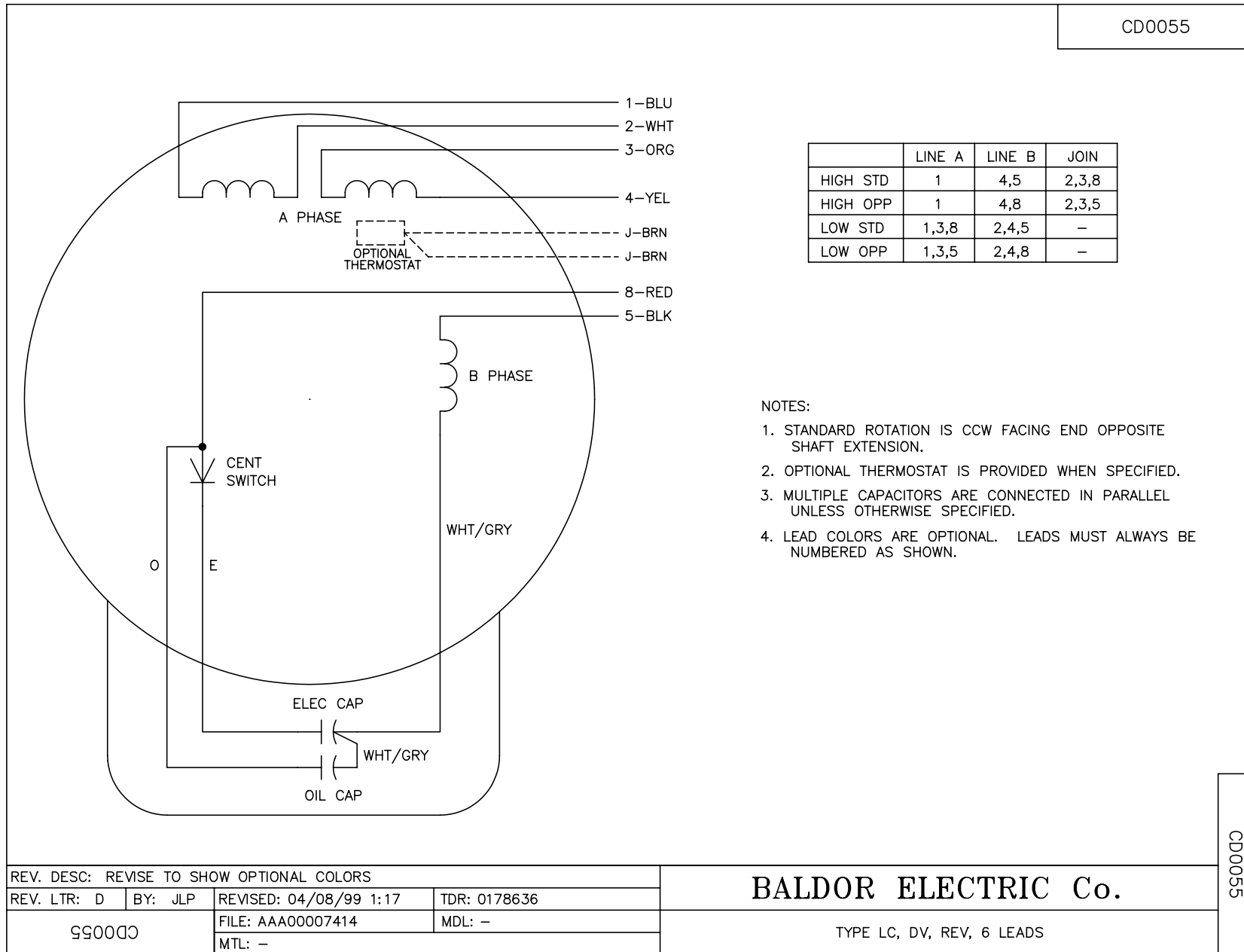
Parts List		
Part Number	Description	Quantity
36WGS115-C001	1,2,3634LC,N,CD0055,CS0113,36SL2361,36RC	1.000 EA
36WGS115-R002	1,2,3634LC,N,CD0055,TEFC,L,60,3 HP,115/2	1.000 EA
36T369	TEFC N 182-184CZ GP LC N F1	1.000 EA
WD1000A15	3-520132-2 AMP FLAG (4M/RL) 16-14AWG	4.000 EA
36CB3800SP	CAPACITOR COVER, CAST	1.000 EA
HA7010A01	CAPACITOR RETENTION CLAMP, 6.562 LONG	1.000 EA
MJ1000A02	GREASE, MOBIL POLYREX EM - 124047	0.050 LB
HW1025A10	#10 BALANCE WASHER (SPL)	4.000 EA
36FN4000A03	INFN, STEEL, 6.50 OD, 1.612 ID	1.000 EA
BG6205E03	6205 D.SL,C3,POLYREX EM	1.000 EA
BG6207E03	6207 D.SL,C3,POLYREX EM	1.000 EA
35FN3002A04SP	EXFN, PLASTIC, 6.376 OD, .906 ID W/KEY	1.000 EA
MG1000G27	MED CHARCOAL METALLIC GREY 400-0096	0.022 GA
36SB0018B00	W-D #100-076-4718,BAND ASSY,VERT	1.000 EA
36SH6704B01	SH,TEFC,180,CZ,MU3005,6207,6205,E2=5.039	1.000 EA
HA3101A25	THRUBOLT 1/4-20 X 11.000 OHIO ROD	4.000 EA
SP5172A05	37 TYPE LC TORQ STAT SW LEAD ASSEMBLY	1.000 EA
RS9000A11SP	ROT SW,TORQ 300-2-60,AC-1.127",3.625" SP	1.000 EA
MG5017	VARNISH - PDG 2500	0.050 GA
LC0001A01	CONN LABEL / WARNING LABEL (LC0001 / LB1	1.000 EA
LB1417	LABEL CARTON 6X4 PERFORATED BLANK ROLLS	1.000 EA
NP1256L	ALUM UL CSA CC INDUSTRIAL MOTOR A60	1.000 EA
G0PA1000	PKG GRP, PRINT PK1026A06	1.000 EA
MN416A01	TAG-INSTAL-MAINT no wire (1200/bx) 3/19	1.000 EA



<b>Parts List (continued)</b>		
<b>Part Number</b>	<b>Description</b>	<b>Quantity</b>
PK3082	STYROFOAM CRADLE	1.000 EA
PK3088	MICROFOAM, 8"X"8 PERF. SHEETS 5,400/RL	1.000 EA



CD0055



REV. DESC: REVISE TO SHOW OPTIONAL COLORS			
REV. LTR: D	BY: JLP	REVISED: 04/08/99 1:17	TDR: 0178636
990000		FILE: AAA00007414	MDL: -
		MTL: -	

**BALDOR ELECTRIC Co.**

TYPE LC, DV, REV, 6 LEADS

CD0055

Marketing maintained PDF of MN416:

<http://www.baldor.com/support/Literature/Load.ashx/MN416?ManNumber=MN416>